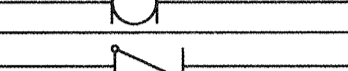
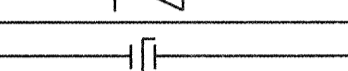
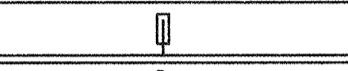
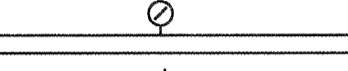
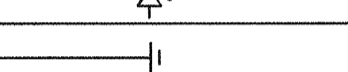
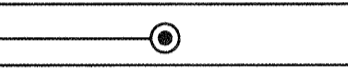
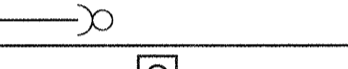
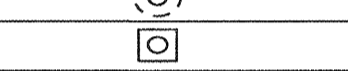


LEGEND & ABBREVIATIONS

ABBREVIATION	SYMBOL	DESCRIPTION	ABBREVIATION	DESCRIPTION
W, S, D	S	SANITARY WASTE, SOIL & DRAIN	AB	ABOVE
V	-----	VENT - SANITARY	A/C	ABOVE CEILING
CW	-----	DOMESTIC COLD WATER	AFF	ABOVE FINISHED FLOOR
HW	-----	DOMESTIC HOT WATER (110 ° F)	A/S	AT STRUCTURE
HWR	-----	DOMESTIC HOT WATER RETURN	BFP	BACKFLOW PREVENTER
GV		GATE VALVE	B/F	BELOW FLOOR
GLV		GLOBE VALVE	CLG	CEILING
BV		BALL VALVE	CL	CENTER LINE
CV		CHECK VALVE	CONN	CONNECT(ION)
BLV		BUTTERFLY VALVE	CONT	CONTINUATION
STR		STRAINER	DN	DOWN
		THERMOMETER	DWGS	DRAWINGS
		PRESSURE GAUGE	ELEC	ELECTRICAL
		UNION	EL	ELEVATION
WHA		WATER HAMMER ARRESTOR 'SIZE'	EXP	EXPANSION
RV		PRESSURE OR TEMPERATURE RELIEF VALVE	FIN	FINISHED
CO		CLEANOUT	FU	FIXTURE UNITS
FCO		FLOOR CLEANOUT	FL	FLOOR
GCO		GRADE CLEANOUT	HVAC	HEATING, VENTILATION & AIR CONDITIONING
WCO		WALL CLEANOUT	HB	HOSE BIBB
		P-TRAP	IE	INVERT ELEVATION
FD		FLOOR DRAIN 'TYPE'	L	LEADER
RD		ROOF DRAIN 'TYPE'	MTD	MOUNTED
AD		AREA DRAIN 'TYPE'	SAN	SANITARY
			S	SOIL
			TYP	TYPICAL
			U/G	UNDERGROUND
			VTR	VENT THRU ROOF
			NFWH	NON-FREEZE WALL HYDRANT
			W	WASTE

GENERAL NOTES:

1. ALL UTILITIES ARE SHOWN IN APPROXIMATE LOCATIONS ONLY. VERIFY EXACT LOCATION AND INVERT ELEVATION IN FIELD BEFORE BEGINNING WORK.
2. WALL HYDRANTS SHALL BE MOUNTED 1'-6" ABOVE GRADE, UNLESS NOTED OTHERWISE.
3. HOSE BIBBS SHALL BE MOUNTED 1'-6" ABOVE FINISHED FLOOR, UNLESS NOTED OTHERWISE.
4. COORDINATE ALL WORK WITH OTHER TRADES.

PUMPS			
PUMP NUMBER	HWC-1	SP-1	
SPEC. TYPE	---	---	
SERVICE	DOM. HOT WATER	SUMP PUMP	
LOCATION	MECH. ROOM	ELEV. PIT	
CAPACITY, GPM	2	30	
DISCHARGE HEAD, FT.	10	25	
SUCTION PRESS., FT.	---	---	
FLUID TEMP., °F.	120	---	
RPM	---	---	
HP	1/12	1/2	
CONTROLLER	AQUASTAT	FLOAT SWITCH	
ELECTRICAL CHARACTERISTICS	SEE ELEC. DWGS.	SEE ELEC. DWGS.	
REMARKS		①	

① SUMP PUMP SHALL BE LIBERTY PUMPS SUMP PUMP WITH OIL MONITOR AND ALARM MODEL ELV280 OR EQUAL.

WATER HEATERS - ELECTRIC			
HEATER NUMBER	WH-1	WH-2	
SPEC. TYPE	---	---	
LOCATION	MECH ROOM	BELT PRESS BLD	
STORAGE, GALLONS	119	119	
RECOVERY, GPH ①	105	105	
ENTERING WATER TEMPERATURE, °F.	50	50	
LEAVING WATER TEMPERATURE, °F.	120	120	
INPUT, KW	18	18	
ELECTRICAL CHARACTERISTICS	480V, 3PH	480V, 3PH	
REMARKS	②	②	

① AT 70 DEGREE RISE
 ② WATER HEATER SHALL BE A.O. SMITH DRE-120-18 OR EQUAL.

PLUMBING FIXTURES

SPEC. TYPE	FIXTURE	MINIMUM INDIVIDUAL CONNECTION				REMARKS
		COLD	HOT	VENT	WASTE	
P-1	WATER CLOSET	1/2"	---	---	4"	18" TO RIM ①
P-3	LAVATORY	1/2"	1/2"	---	1 1/4"	34" TO RIM ①
P-4	MOP SINK	3/4"	3/4"	---	3"	FLOOR MOUNT
P-4A	LAUNDRY MOP SINK	1/2"	1/2"	---	1 1/2"	FREESTANDING
P-5	ELECTRIC WATER COOLER	1/2"	---	---	1 1/2"	34" TO BUBBLER ①
P-6	SINK	1/2"	1/2"	---	1 1/2"	COUNTERTOP ①
P-6*	LAB SINK	1/2"	1/2"	---	1 1/2"	②
P-7	SHOWER	1/2"	1/2"	---	2"	①③
P-8	EMERGENCY SHOWER	1 1/2"	1"	---	---	④
P-9	ICE MAKER CONNECTION BOX	1/2"	---	---	---	36" AFF

- ① FIXTURE, TRIM AND INSTALLATION SHALL COMPLY TO ADA REQUIREMENTS.
- ② FIXTURE AND TRIM PROVIDED BY OTHERS. CONNECT AS REQUIRED.
- ③ SHOWER STALL BY OTHERS. PROVIDE FLOOR DRAIN AND TRIM.
- ④ EMERGENCY SHOWER BY OTHERS. PROVIDE TEMPERING VALVE AND CONNECT AS REQUIRED.



NO.	DATE	BY	REVISIONS

THOMAS & HUTTON
 50 Park of Commerce Way
 Savannah, GA 31405 • 912.234.5300
 www.thomasandhutton.com

SAVANNAH
 savannahga.gov
 TRAVIS FIELD WATER RECLAMATION FACILITY
 PLUMBING LEGENDS AND SCHEDULE

JOB NO:	J-26963.0000
DATE:	JANUARY 15, 2019
DRAWN:	JPG
DESIGNED:	JPG
REVIEWED:	MP
APPROVED:	JM
SCALE:	1/8" = 1'-0"

P00.1

CADD PLOT
15-APR-2019 10:54:18 AM
P00.1.dwg

PLUMBING SPECIFICATIONS

CODES

- A. THE PLUMBING INSTALLATION AND EQUIPMENT SHALL CONFORM TO THE FOLLOWING:
 1. INTERNATIONAL PLUMBING CODE, 2012 EDITION WITH GEORGIA AMENDMENTS.

TESTING PIPE SYSTEMS

- A. GENERAL. CONCEALED PIPING AND INSULATED PIPING SHALL BE TESTED IN PLACE BEFORE CONCEALING OR COVERING. TEST SHALL BE CONDUCTED IN THE PRESENCE OF THE ARCHITECT OR HIS DESIGNATED REPRESENTATIVE. PIPING LOCATED UNDERGROUND SHALL BE TESTED BEFORE BACKFILLING. EQUIPMENT, MATERIALS AND INSTRUMENTS FOR TESTING SHALL BE FURNISHED BY THE CONTRACTOR WITHOUT ADDITIONAL COST TO THE OWNER.
- B. PLUMBING SYSTEMS
- SANITARY WASTE AND VENT PIPING. THE PIPING SHALL BE TESTED WITH WATER BEFORE INSTALLING FIXTURES. WATER TESTS SHALL BE APPLIED TO THE SYSTEM EITHER IN ITS ENTIRETY OR IN SECTIONS. IF THE TEST IS APPLIED TO THE ENTIRE SYSTEM, ALL OPENINGS IN THE PIPING SHALL BE CLOSED EXCEPT THE HIGHEST OPENING, AND THE SYSTEM SHALL BE FILLED WITH WATER AND TESTED WITH AT LEAST A 10 FT. HEAD OF WATER. IN TESTING SECTIONS, AT LEAST THE UPPER 10 FT. OF THE NEXT PRECEDING SECTION SHALL BE TESTED SO THAT EACH JOINT OR PIPE IN THE BUILDING EXCEPT THE UPPERMOST 10 FT. OF THE SYSTEM HAS BEEN SUBMITTED TO A TEST OF AT LEAST 10 FT. HEAD OF WATER. THE WATER SHALL BE KEPT IN THE SYSTEM OR IN THE PORTION UNDER TEST FOR AT LEAST 2 HOURS BEFORE THE INSPECTION STARTS. THE SYSTEM SHALL BE TIGHT AT ALL JOINTS.
 - WATER PIPING. UPON COMPLETION OF THE ROUGH-IN AND BEFORE SETTING FIXTURES, THE ENTIRE DOMESTIC COLD WATER, HOT WATER, AND HOT WATER CIRCULATION PIPING SYSTEMS SHALL BE TESTED AT HYDROSTATIC PRESSURE OF 100 PSIG AND PROVED TIGHT AT THIS PRESSURE FOR A PERIOD OF NOT LESS THAN 2 HOURS IN ORDER TO PERMIT INSPECTION OF ALL JOINTS. WHERE A PORTION OF THE WATER PIPING SYSTEM IS TO BE CONCEALED BEFORE COMPLETION, THIS PORTION SHALL BE TESTED SEPARATELY IN A MANNER DESCRIBED FOR THE ENTIRE SYSTEM.

DOMESTIC WATER SYSTEM

- A. PROVIDE COMPLETE SYSTEMS OF COLD AND HOT WATER PIPING AND ACCESSORIES SO THAT EVERY FIXTURE AND PIECE OF WATER USING EQUIPMENT IN THIS AREA OF THE BUILDING WILL BE FURNISHED WITH A WATER SUPPLY.
- B. EXTEND THE DOMESTIC COLD AND HOT WATER PIPING AND CONNECT TO THE EXISTING PIPING, AS SHOWN ON THE DRAWINGS.
- C. PIPING FITTINGS AND JOINTS
- PIPE AND FITTINGS SHALL BE AS LISTED HEREIN AND SHALL BE USED ON THE SERVICES INDICATED.
 - TYPE HARD COPPER TUBING, FED. SPEC. NO. WW-T-799, WITH SOLDERED JOINTS AND WROUGHT COPPER SOCKET FITTINGS FOR ALL WATER PIPING.
 - SOLDER JOINTS (FOR TYPE 'L' COPPER TUBING) SHALL BE MADE USING A 95-TIN-ANTIMONY SOLDER WITH A COMPATIBLE FLUX.
 - PROGRESS SYSTEM IS APPROVED FOR USE.
- D. DISINFECTION
- ALL DOMESTIC WATER SERVICE AND SUPPLY PIPING INSTALLED UNDER THIS DIVISION SHALL BE DISINFECTED WITH CHLORINE BEFORE IT IS PLACED INTO OPERATION. THE CHLORINATING MATERIAL SHALL BE LIQUID CHLORINE CONFORMING TO FEDERAL SPECIFICATION BB-C-120 AND SHALL BE INTRODUCED TO THE SYSTEM BY EXPERIENCED OPERATORS ONLY. THE CHLORINE SOLUTION APPLIED TO THE PIPING SECTIONS OR SYSTEM SHALL CONTAIN AT LEAST FIFTY PARTS PER MILLION OF AVAILABLE CHLORINE AND SHALL REMAIN IN THE SECTIONS OR SYSTEM FOR A PERIOD OF NOT LESS THAN SIXTEEN (16) HOURS. DURING THE DISINFECTION PERIOD ALL VALVES SHALL BE OPENED AND CLOSED AT LEAST FOUR TIMES. AFTER THE DISINFECTION PERIOD THE CHLORINATED WATER SHALL BE FLUSHED FROM THE SYSTEM WITH CLEAR WATER UNTIL THE RESIDUAL CHLORINE CONTENT IS NOT GREATER THAN TWO-TENTHS - (0.2) - PARTS PER MILLION. THE CONTRACTOR SHALL SUBMIT TO THE ARCHITECT CERTIFICATION THAT THE SYSTEM WAS DISINFECTED.

SANITARY, WASTE, AND VENT SYSTEM

- A. PROVIDE A COMPLETE SYSTEM OF SANITARY, WASTE, AND VENT PIPING AS SHOWN ON THE DRAWINGS.
- B. PIPE FITTINGS AND JOINTS
- PIPE FITTINGS SHALL BE AS LISTED HEREIN AND SHALL BE USED FOR THE SERVICES INDICATED.
 - SCHEDULE 40 PRESSURE RATED PVC PIPE AND DWV FITTINGS WITH SOLVENT GLED JOINTS FOR ALL SANITARY, WASTE AND VENT PIPING.
 - SOLVENT GLED JOINTS SHALL BE MADE WITH PRIMER AND GLUE ACCORDING TO THE MANUFACTURER'S REQUIREMENTS.
- C. INSTALLATION
- HORIZONTAL SOIL AND WASTE PIPING 2-1/2 INCHES IN SIZE AND SMALLER SHALL BE SLOPED AT A MINIMUM OF 1/4 INCH PER FOOT. HORIZONTAL SOIL AND WASTE PIPING 3 INCHES IN SIZE AND LARGER SHALL BE SLOPED AT A MINIMUM OF 1/8 INCH PER FOOT.
 - HORIZONTAL VENT BRANCHES SHALL BE KEPT ABOVE THE HIGHEST FIXTURE SERVED BY THE VENT BRANCH IN ORDER TO PRECLUDE THE POSSIBILITY OF VENTS BEING USED AS WASTE PIPES. HORIZONTAL VENT BRANCHES SHALL BE SLOPED TO PREVENT THE ACCUMULATION OF WATER OR SCALE THEREIN.
 - ON SOIL, WASTE AND VENT PIPING CHANGES IN PIPE SIZE SHALL BE MADE WITH REDUCING FITTINGS AND CHANGES IN PIPE DIRECTION SHALL BE MADE WITH FITTINGS. NO BUSHINGS WILL BE ALLOWED.
 - DURING CONSTRUCTION ALL PIPE OPENINGS, NOT BEING WORKED ON, SHALL BE PLUGGED OR CAPPED TO PREVENT FOREIGN OBJECTS FROM ENTERING SYSTEM.

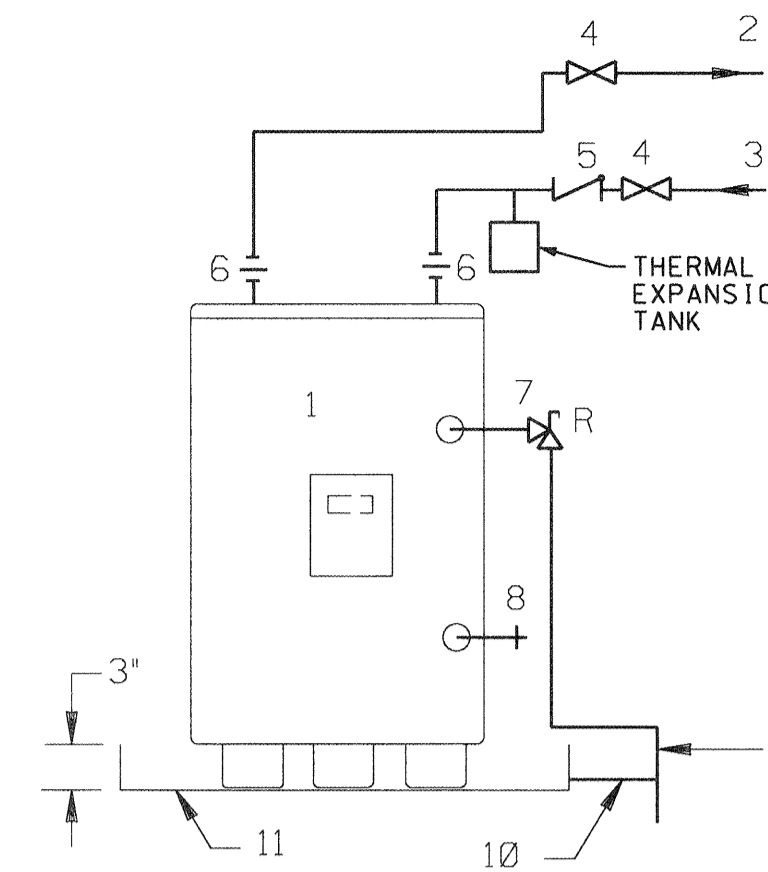
INSULATION

- A. ALL WATER PIPING SHALL BE INSULATED WITH FIBERGLASS JACKETED PIPE INSULATION.

PLUMBING FIXTURES

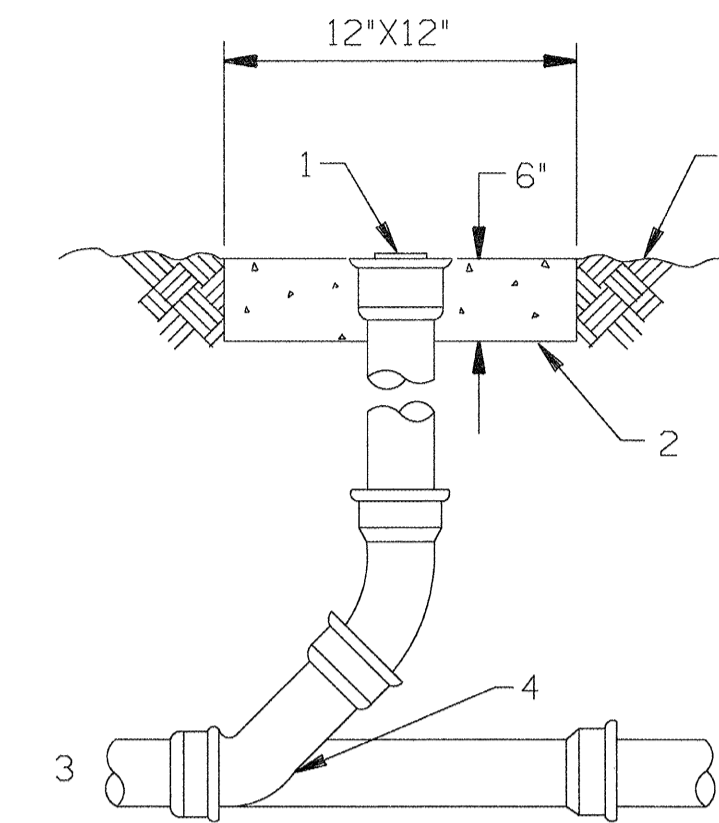
- A. WATER CLOSET P-1
 FIXTURE KOHLER K-3713-0
 SEAT BEMIS B1655SSC000
- B. LAVATORY P-3
 FIXTURE KOHLER K-2030
 FAUCET KOHLER K-15199
 DRAIN PROFLO PFHGD
 P-TRAP PROFLO PF8872
 SUPPLY VALVES AND RISERS BRASSCRAFT
 P-TRAP INSULATION KIT PROFLO PF203WH
 CHAIR CARRIER J.R. SMITH
- C. MOP SINK P-4
 FIXTURE FIAT MSB3624
 FAUCET FIAT 830-AA
 HOSE FIAT 832-AA
- D. LAUNDRY SINK P-4A
 FIXTURE FIAT TAT1
- E. ELECTRIC WATER COOLER P-5
 FIXTURE ELKAY EZS8C
 P-TRAP PROFLO PF39400B
 SUPPLY VALVES AND RISERS BRASSCRAFT
 CHAIR CARRIER J.R. SMITH

- F. SINK P-6
 FIXTURE ELKAY LRAD222265
 FAUCET ELKAY LK1001CR
 DRAIN ELKAY CRUMB CUP
 P-TRAP PROFLO
 SUPPLIERS BRASSCRAFT
- G. SHOWER P-7
 DRAIN - TYPE 'A' FLOOR DRAIN
 SHOWER VALVE AND TRIM SPEAKMAN SM-3040
- H. EMERGENCY SHOWER
 FIXTURE BY OTHERS
 MIXING VALVE SPEAKMAN SE-350
- I. ICE MAKER BOX P-9
 FIXTURE SIOUX CHIEF 696-1010MF
- J. FLOOR DRAIN FD 'A'
 J.R. SMITH 2010
- K. FLOOR DRAIN FD 'B'
 J.R. SMITH 2010-A-B W/3591
- L. NFWH
 J.R. SMITH S55090TSAP
- M. WATER HEATER WH-1
 A.D. SMITH DRE-120-18
- N. SUMP PUMP SP-1
 LIBERTY PUMP ELV-280
- O. CIRCULATION PUMP HWC-1
 TACO "00" SERIES



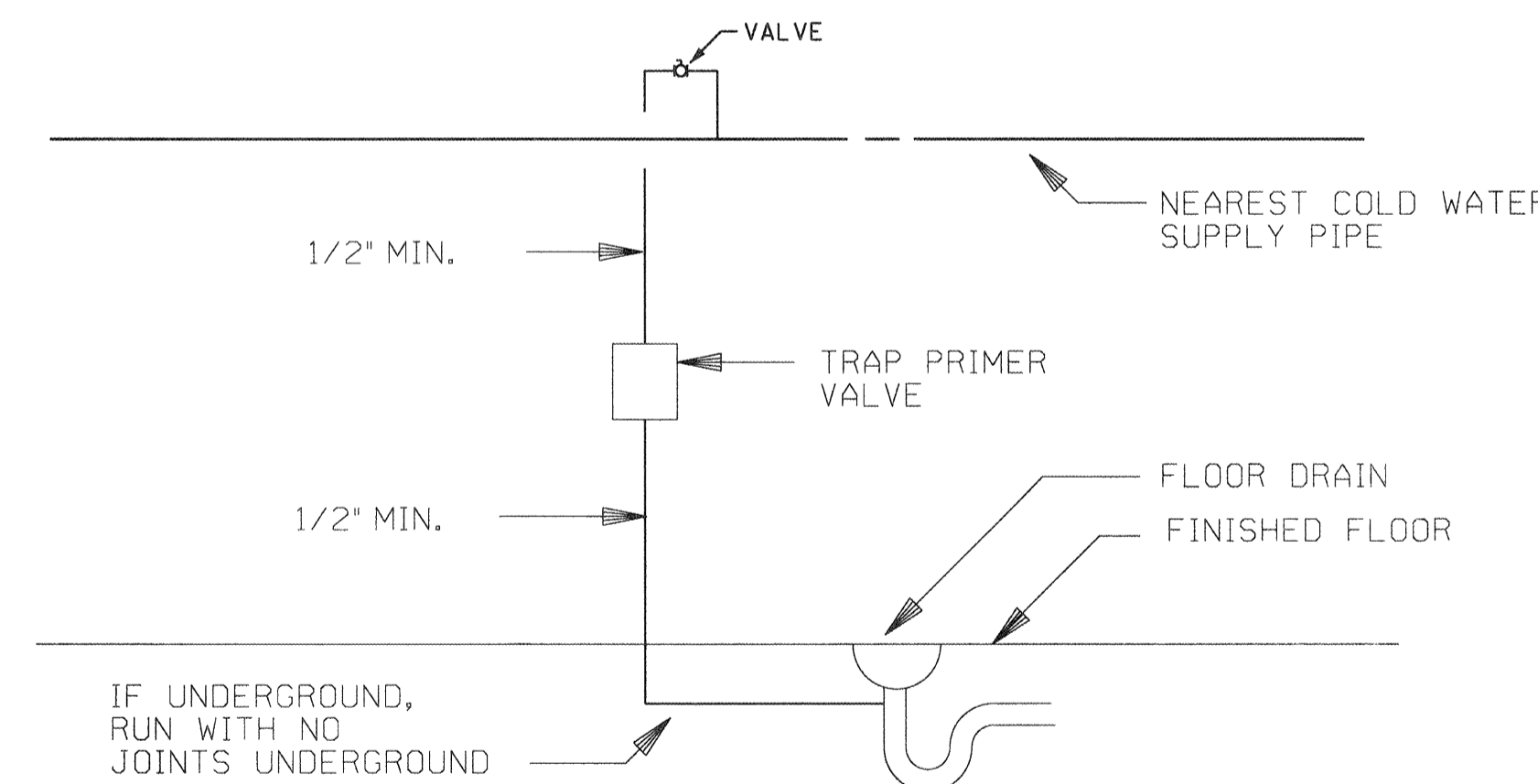
- WATER HEATER
- HOT WATER TO SYSTEM
- COLD WATER SUPPLY
- SHUT-OFF VALVE
- CHECK VALVE
- UNION
- PRESSURE & TEMPERATURE RELIEF VALVE
- DRAIN VALVE
- RELIEF VALVE DISCHARGE PIPED FULL SIZE TO FLOOR DRAIN
- DRIP PAN DRAIN
- DRIP PAN (22 GAUGE GALVANIZED STEEL)

1 ELECTRIC WATER HEATER PIPING
 P00.2 SCHEMATIC ONLY

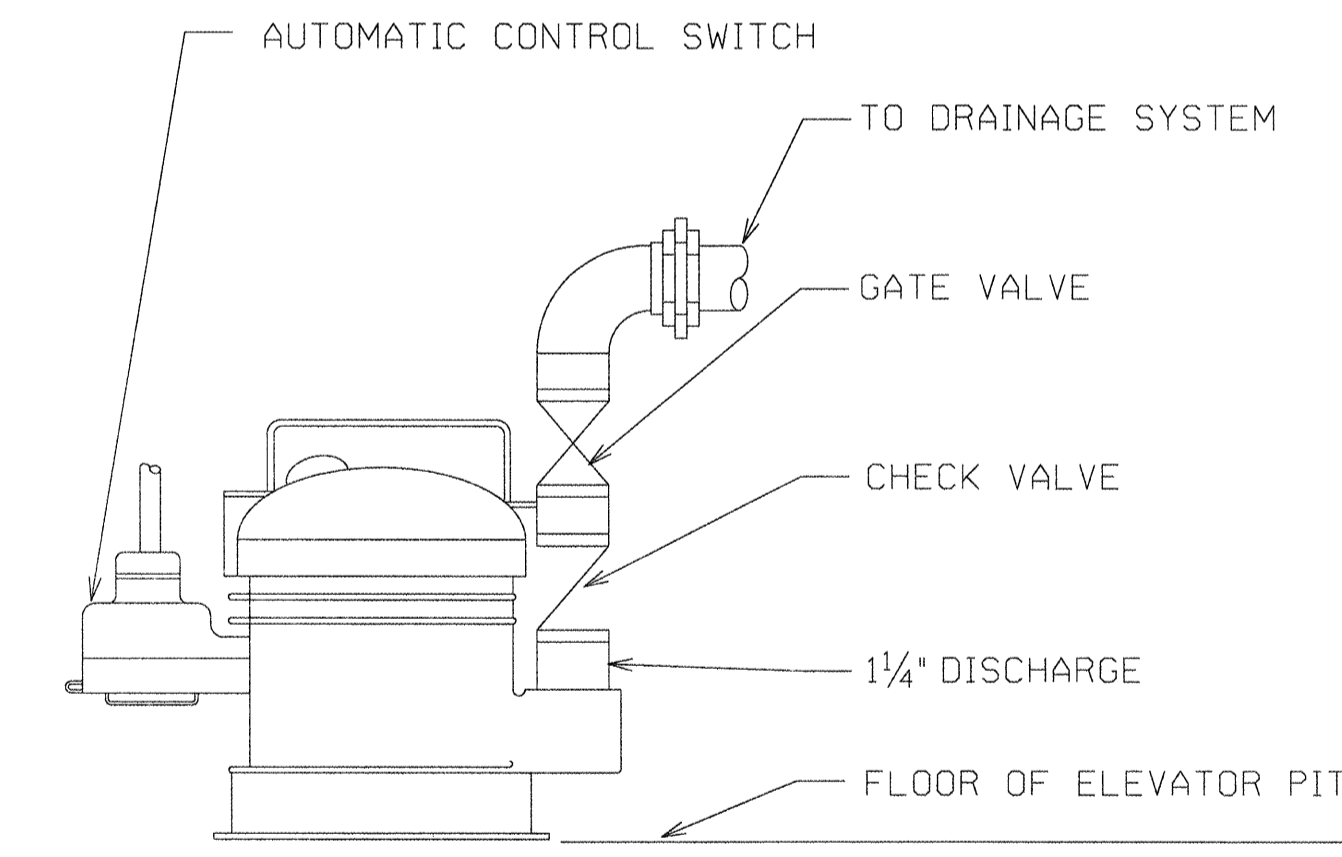


- CLEANOUT PAD
- CONCRETE PAD
- SANITARY OR STORM PIPE
- 1/8 BEND IF C.O. OCCURS AT END OF LINE
- FINISHED GRADE

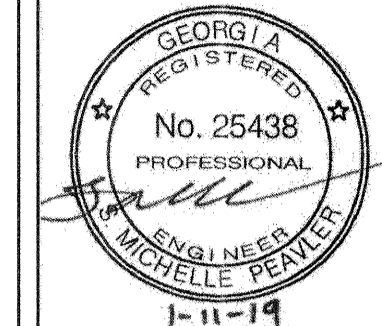
2 GRADE CLEANOUT
 P00.2 NOT TO SCALE



3 FLOOR DRAIN TRAP PRIMER
 P00.2 NOT TO SCALE



4 SUMP PUMP DETAIL
 P00.2 SCHEMATIC ONLY



NO.	DATE	BY	REVISIONS
0	10-0-2009		Issued for Bid

THOMAS & HUTTON
 50 Park of Commerce Way
 Savannah, GA 31405 • 912.234.5300
 www.thomasandhutton.com

SAVANNAH savannahga.gov
 TRAVIS FIELD WATER RECLAMATION FACILITY
 PLUMBING SPECIFICATIONS AND DETAILS

JOB NO:	J-26963.0000
DATE:	JANUARY 15, 2019
DRAWN:	JPG
DESIGNED:	JPG
REVIEWED:	MP
APPROVED:	JM
SCALE:	1/8" = 1'-0"

P00.2

CAD: PLO1
 15-APR-2015
 11:45:00 AM
 THERIAULT

BID SET - NOT FOR CONSTRUCTION



BID SET - NOT FOR CONSTRUCTION

NO.	REVISIONS	DATE
0	Issued for Bid	

THOMAS & HUTTON
 50 Park of Commerce Way
 Savannah, GA 31405 • 912.234.5300
 www.thomasandhutton.com

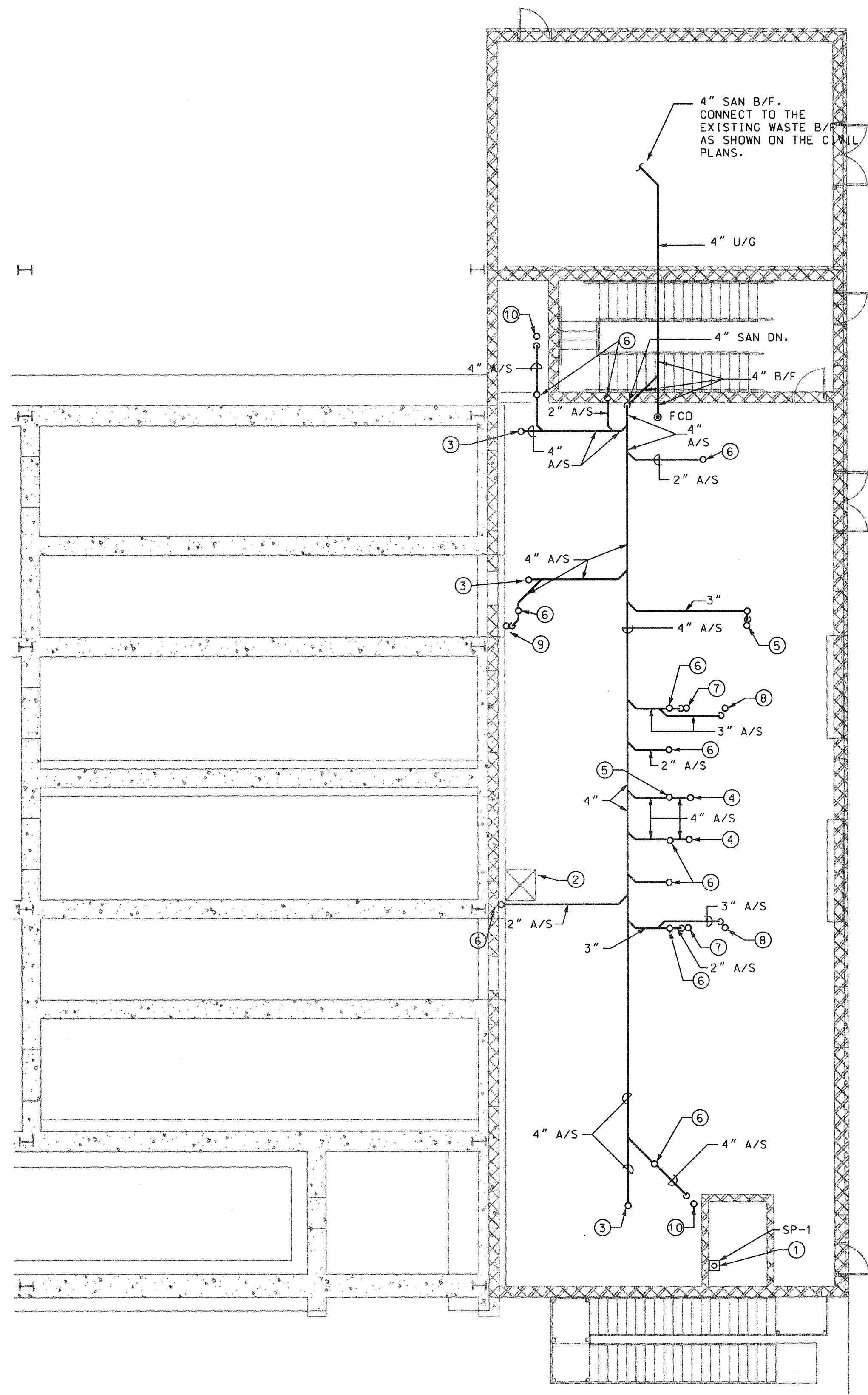
SAVANNAH
 savannahga.gov
 TRAVIS FIELD WATER RECLAMATION FACILITY
 PLUMBING FIRST FLOOR PLANS

JOB NO:	J-26963.0000
DATE:	JANUARY 15, 2019
DRAWN:	JPG
DESIGNED:	JPG
REVIEWED:	MP
APPROVED:	JM
SCALE:	1/8" = 1'-0"

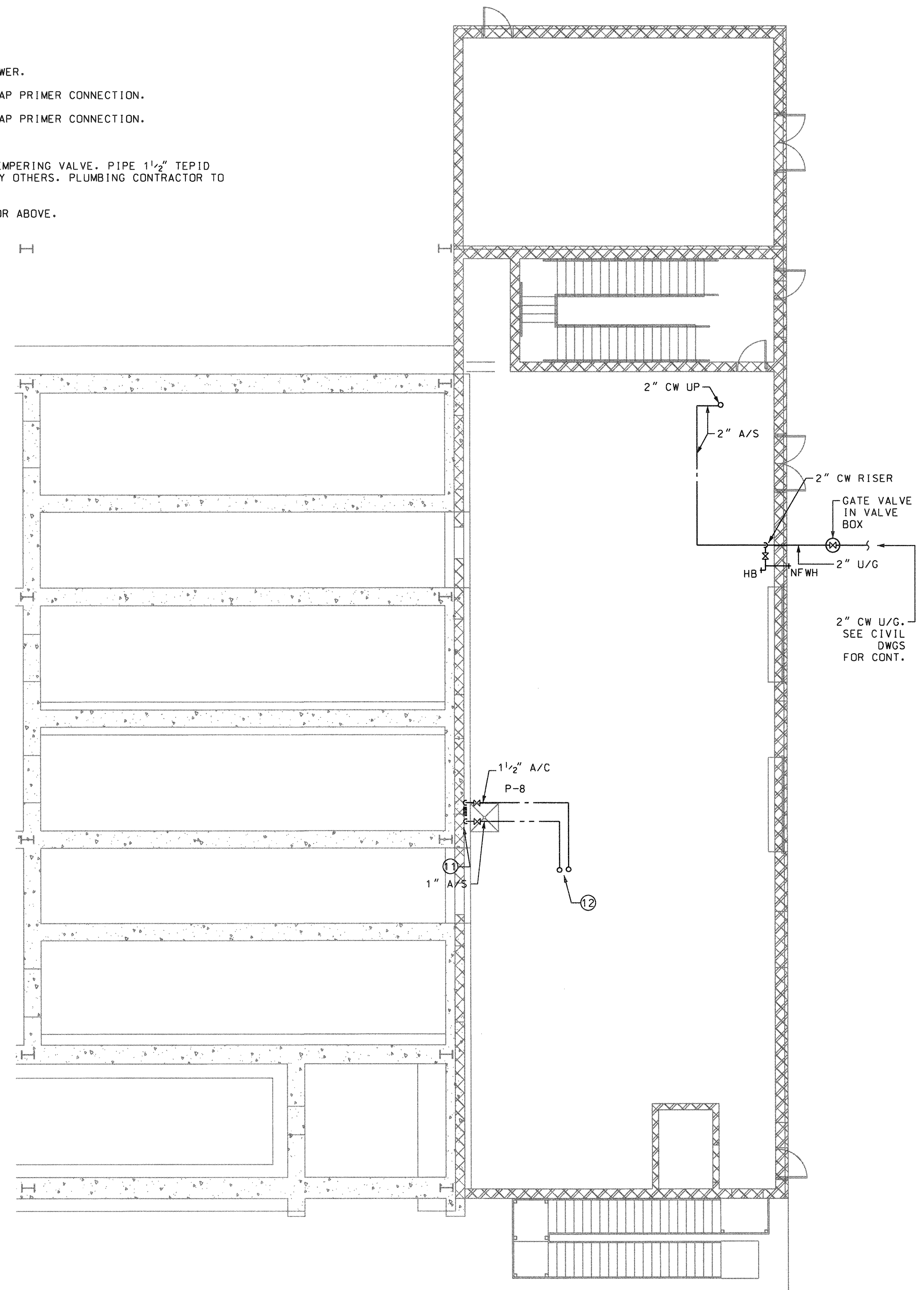
P10.3

NOTES:

- ① INSTALL SUMP PUMP SP-1 IN SUMP IN ELEVATOR PIT. PIPE DISCHARGE FROM PUMP TO WASTE CONNECTION PROVIDE ON CIVIL DRAWINGS.
- ② EMERGENCY SHOWER BY OTHERS. SEE CIVIL DWGS FOR WASTE CONNECTIONS.
- ③ 4" SAN UP TO FCO.
- ④ 4" SAN UP.
- ⑤ 3" W. UP.
- ⑥ 2" W. UP.
- ⑦ 2" W. UP TO 2" FD'A' AT SHOWER.
- ⑧ 3" W UP TO 3" FD'A' WITH TRAP PRIMER CONNECTION.
- ⑨ 4" W UP TO 4" FD'A' WITH TRAP PRIMER CONNECTION.
- ⑩ 4" W UP TO 4" FD'B'.
- ⑪ 1 1/2" CW AND 1" HW DROP TO TEMPERING VALVE. PIPE 1 1/2" TEPID WATER TO EMERGENCY SHOWER BY OTHERS. PLUMBING CONTRACTOR TO PROVIDE TEMPERING VALVE.
- ⑫ 1 1/2" CW AND 1" HW UP TO FLOOR ABOVE.



1 FIRST FLOOR PLAN - SANITARY
 P10.3 SCALE: 1/8" = 1'-0"



2 FIRST FLOOR PLAN - WATER
 P10.3 SCALE: 1/8" = 1'-0"

CADD PLOT
 15-APR-2019
 10:51:47 AM



BID SET - NOT FOR CONSTRUCTION

NO.	REVISIONS	BY	DATE
0	Issued for Bid		05-07-2019

THOMAS & HUTTON
 50 Park of Commerce Way
 Savannah, GA 31405 • 912.234.5300
 www.thomasandhutton.com

SAVANNAH
 savannahga.gov

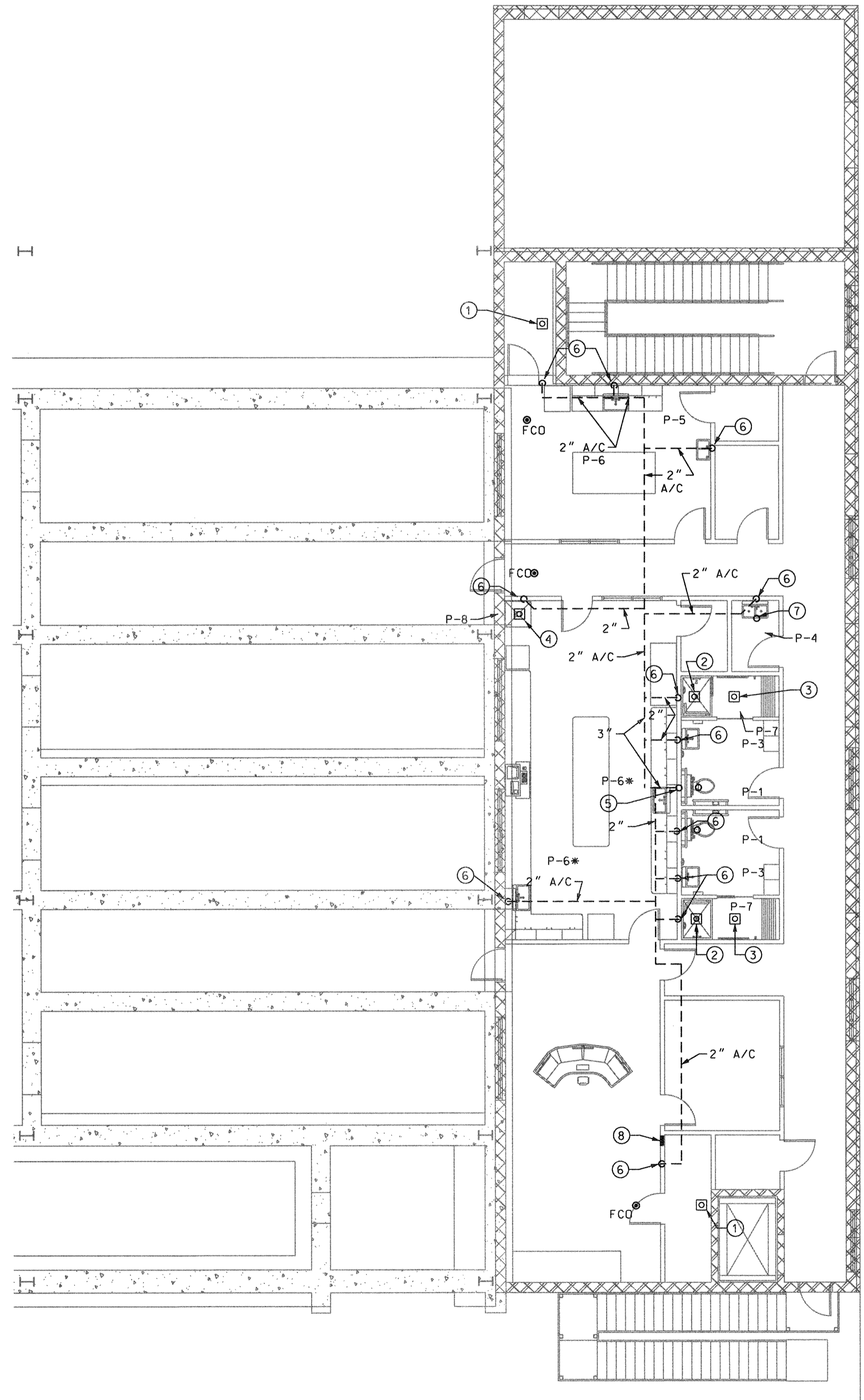
TRAVIS FIELD WATER RECLAMATION FACILITY
 PLUMBING SECOND FLOOR PLANS

JOB NO:	J-26963.0000
DATE:	JANUARY 15, 2019
DRAWN:	JPG
DESIGNED:	JPG
REVISED:	MP
APPROVED:	JM
SCALE:	1/8" = 1'-0"

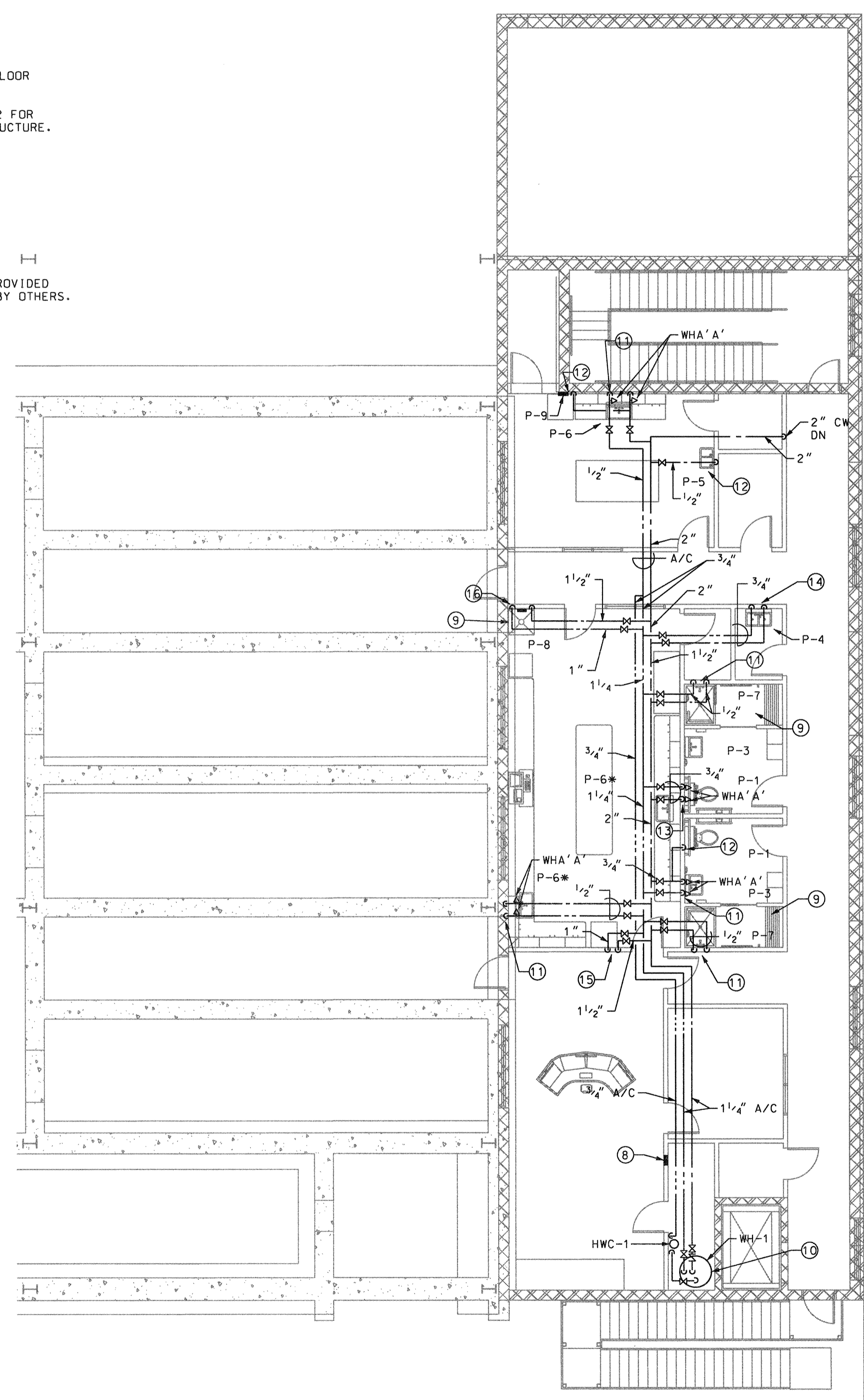
P10.6

NOTES:

- ① 4" FD'B' WITH SURE SEAL TRAP GUARD.
- ② 2" FD'A'.
- ③ 3" FD'A' WITH TRAP PRIMER CONNECTION.
- ④ 4" FD'A' WITH TRAP PRIMER CONNECTION.
- ⑤ 3" V DN., 3" VTR.
- ⑥ 2" V. DN.
- ⑦ 3" W. DN.
- ⑧ SUMP PUMP OIL MONITOR ALARM.
- ⑨ PROVIDE TRAP PRIMER VALVE AND PIPE TO CONNECTION AT FLOOR DRAIN.
- ⑩ 1 1/2" HW, 1 1/2" CW AND 3/4" HWR DROPS TO WH-1. SEE 1/P00.2 FOR PIPING SCHEMATIC. MOUNT THERMAL EXPANSION TANK AT STRUCTURE.
- ⑪ 1/2" HW AND CW DROPS.
- ⑫ 1/2" CW DROP.
- ⑬ 3/4" HW AND CW DROPS TO P-1, P-3, AND P-6*.
- ⑭ 3/4" HW AND CW DROPS.
- ⑮ 1 1/2" CW AND 1 HW DN TO FLOOR BELOW.
- ⑯ 1 1/2" CW AND 1" HW DROPS TO TEMPERATURE MIXING VALVE PROVIDED BY PLUMBER. EXTEND 1 1/2" TO EMERGENCY SHOWER PROVIDED BY OTHERS.

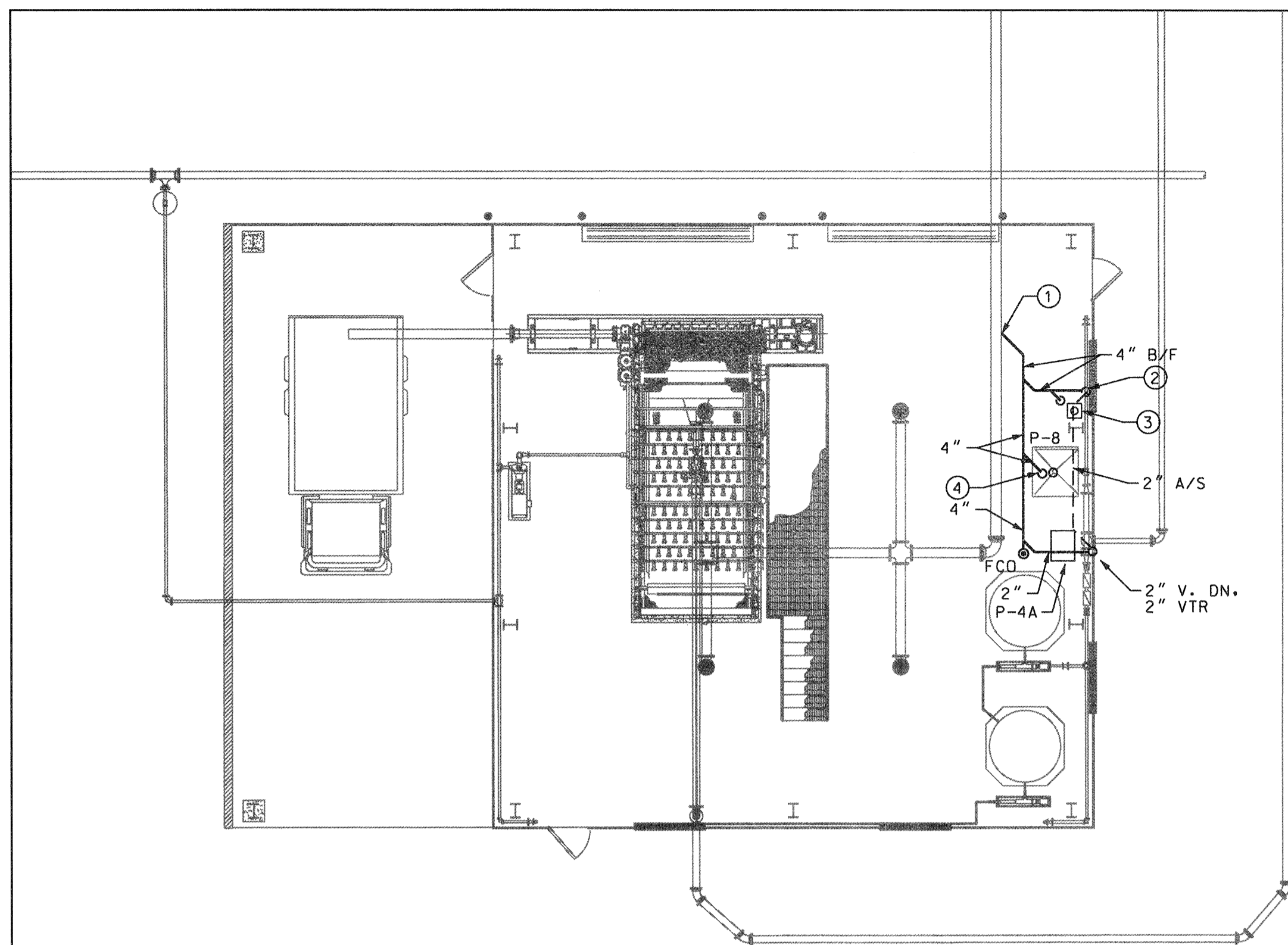


1 SECOND FLOOR PLAN - SANITARY
 P10.6 SCALE: 1/8" = 1'-0"

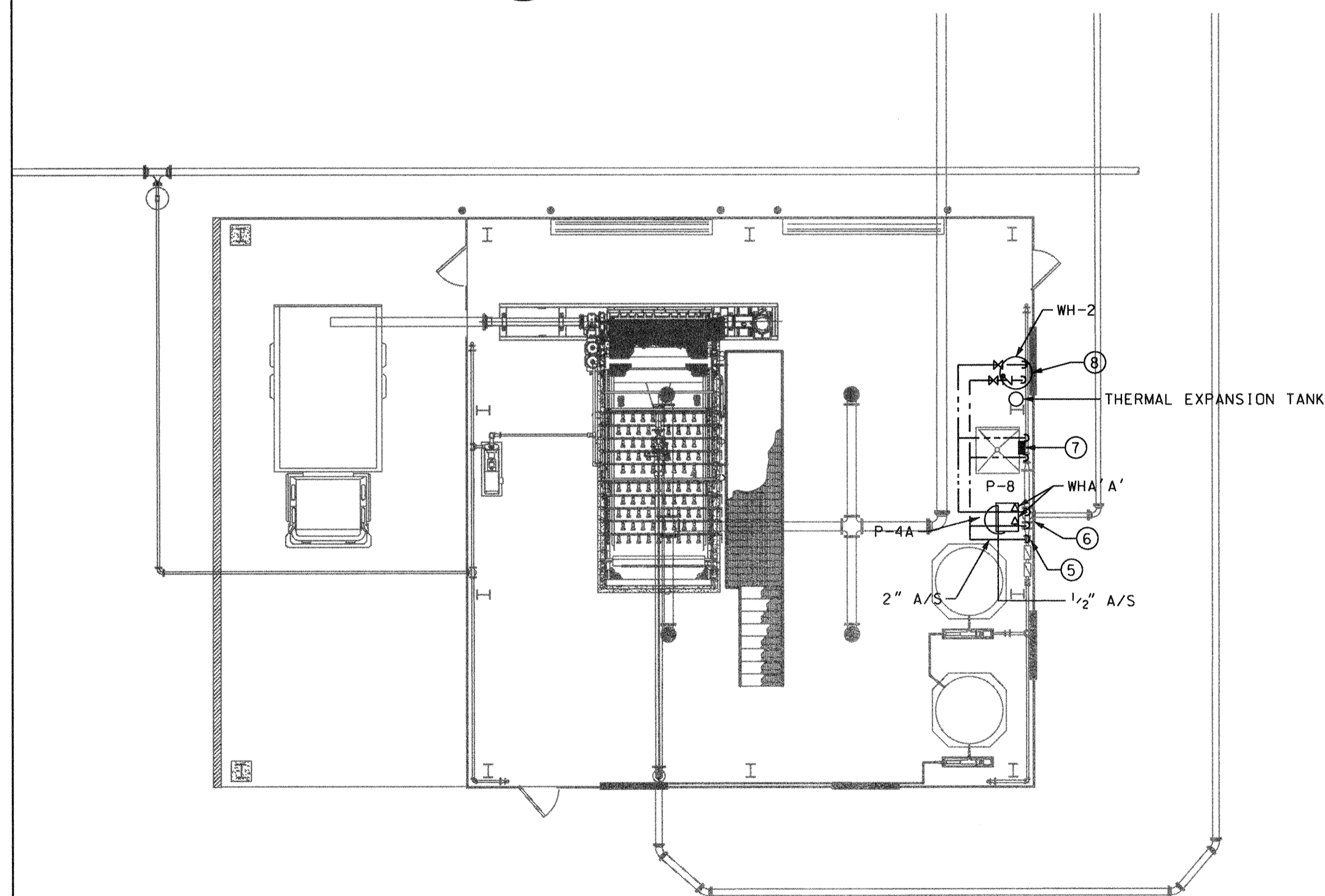


2 SECOND FLOOR PLAN - WATER
 P10.6 SCALE: 1/8" = 1'-0"

CADD PLOT
 16-APR-2019
 10:58:41 AM
 REFCENTER



1 SANITARY PLAN
P15.0 SCALE: 1/8" = 1'-0"

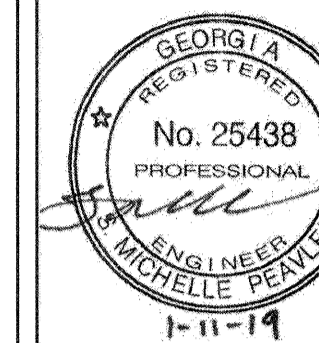


2 WATER PLAN
P15.0 SCALE: 1/8" = 1'-0"

NOTES:

- ① CONNECT TO EXISTING WASTE PIPING B/F. SEE CIVIL DWGS.
- ② 2" V. DN.
- ③ 4" FD'B' WITH SURESEAL TRAP GUARD.
- ④ 4" WASTE UP TO CONNECTION AT P-8.
- ⑤ 2" CW DN. CONNECT TO WATER PIPING SHOWN ON CIVIL DWGS.
- ⑥ 1/2" HW AND CW DROPS.
- ⑦ 1 1/2" CW AND 1" HW DROPS TO TEMPERING VALVE AT P-8. EXTEND 1 1/2" TEPID WATER TO EMERGENCY SHOWER BY OTHERS.
- ⑧ 1" HW AND CW DROPS TO WH-2. SEE 1/P00.2 FOR PIPING SCHEMATIC.

CADD PLOT
15-APR-2015
11:54:15 AM
RPF/AVL/ER



NO.	REVISIONS	BY	DATE
0	Issued for Bid		

THOMAS & HUTTON
50 Park of Commerce Way
Savannah, GA 31405 • 912.234.5300
www.thomasandhutton.com

SAVANNAH
savannahga.gov
TRAVIS FIELD WATER RECLAMATION FACILITY
SLUDGE DEWATERING BUILDING PLUMB PLAN

JOB NO:	J-26963.0000
DATE:	JANUARY 15, 2019
DRAWN:	LC
DESIGNED:	JPG
REVIEWED:	MP
APPROVED:	MP
SCALE:	1/8" = 1'-0"

P15.0