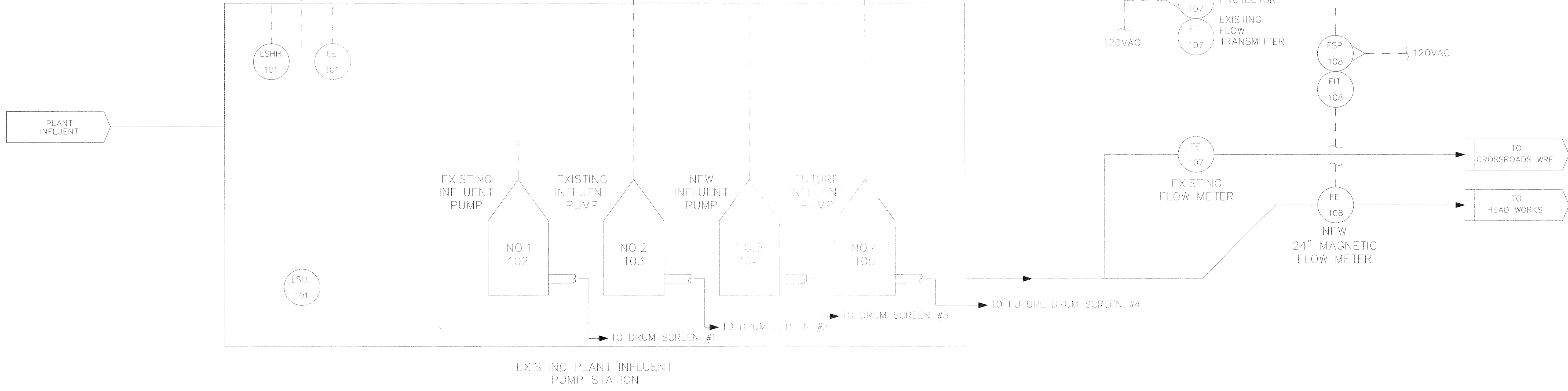
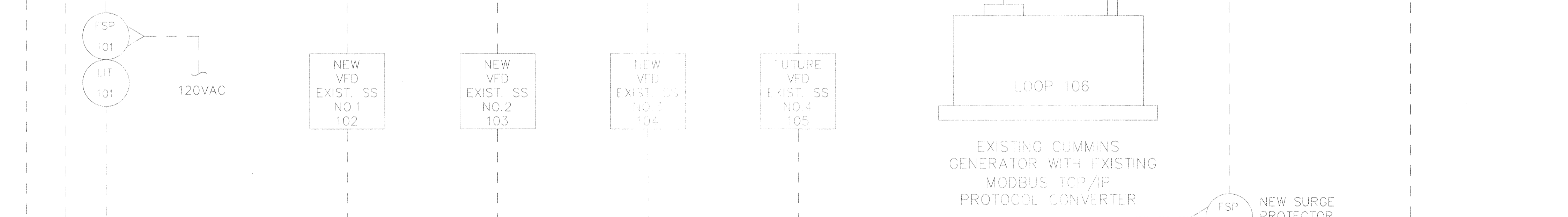
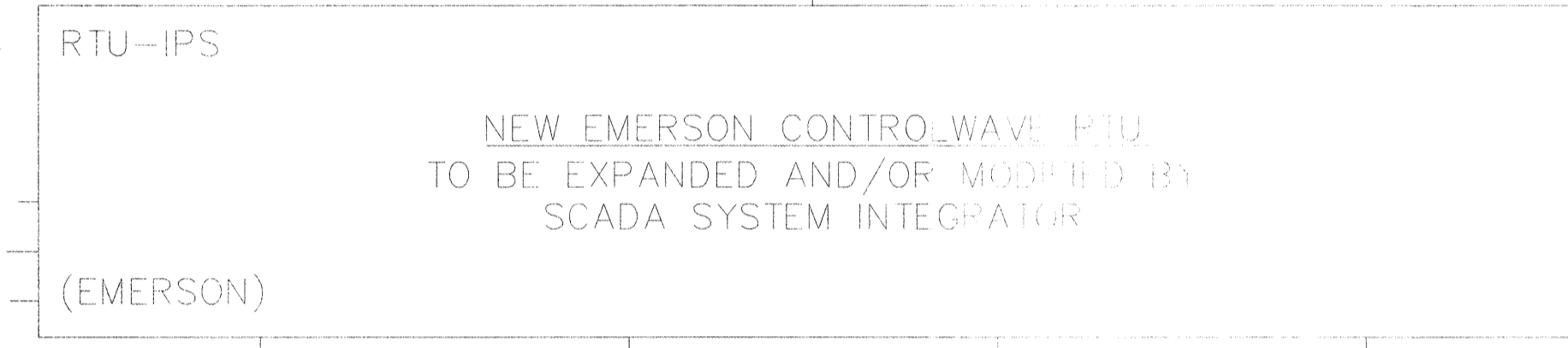
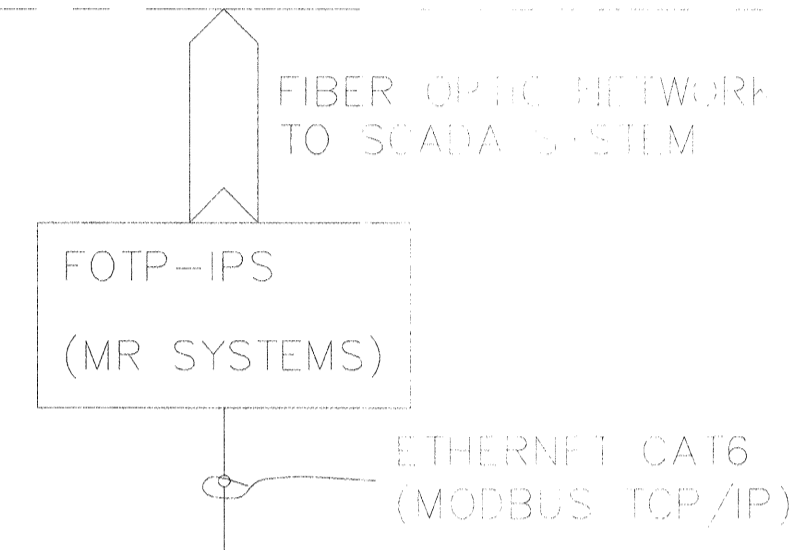
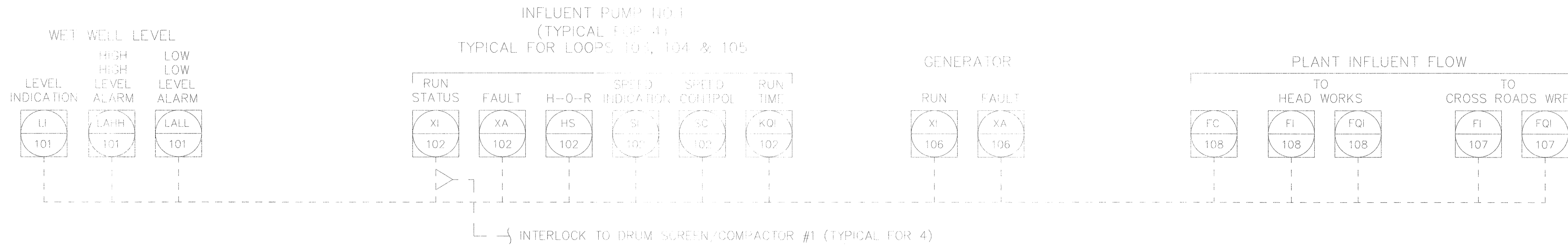


SCADA (EMERSON)



BID SET - NOT FOR CONSTRUCTION

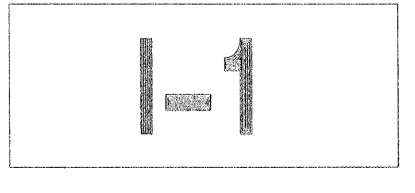
NO.	ISSUED FOR BIDS	REVISIONS	BY	DATE
0				

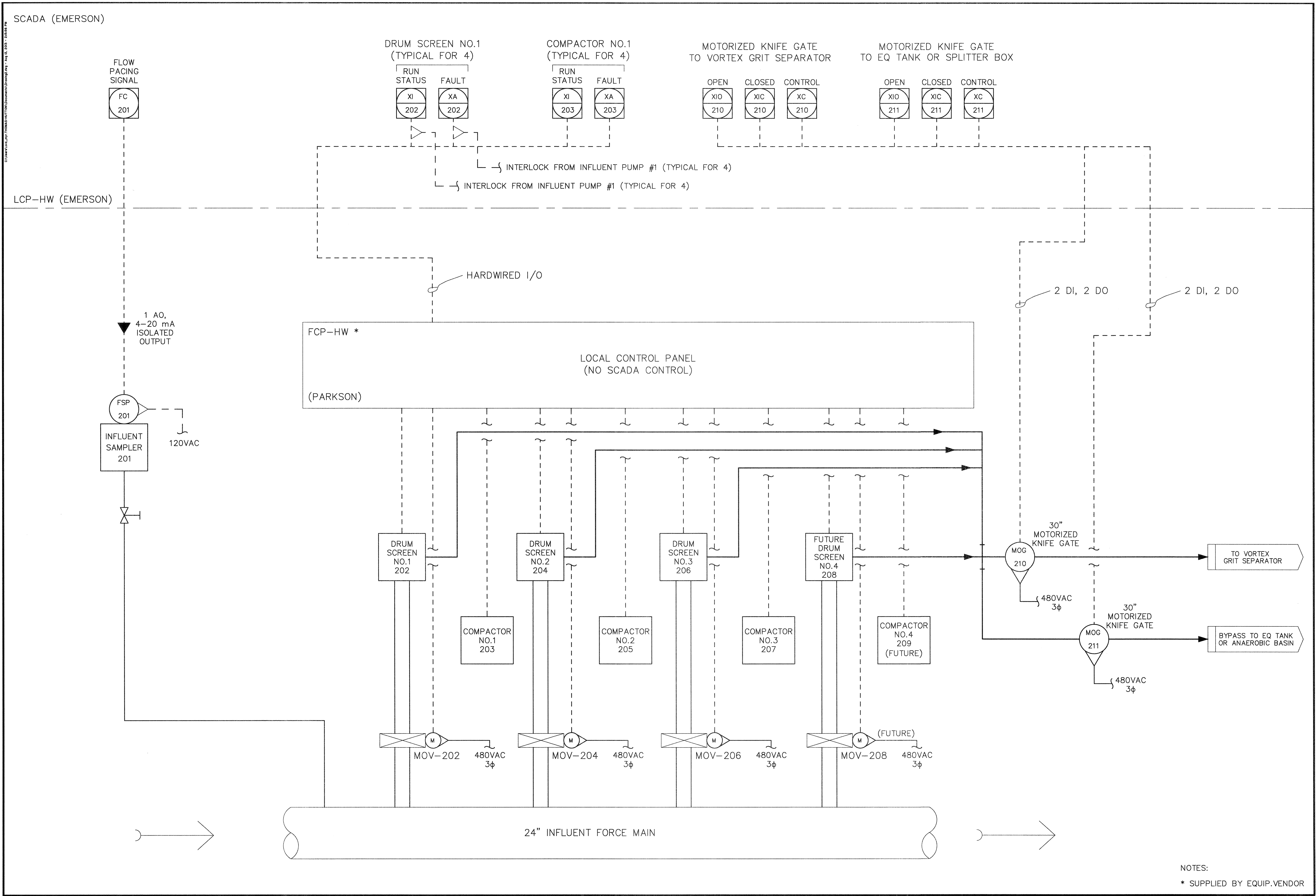
THOMAS & HUTTON
 50 Park of Commerce Way
 Savannah, GA 31405 • 912.234.5300
 www.thomasandhutton.com

SAVANNAH savannahga.gov

TRAVIS FIELD WATER RECLAMATION FACILITY
 EXISTING INFLUENT PUMP STATION

JOB NO.:	J-26963 0000
DATE:	1-16-19
DRAWN:	TH
DESIGNED:	TH
REVIEWED:	FS
APPROVED:	TH
SCALE:	1" = 1'





SCADA (EMERSON)

LCP-HW (EMERSON)

FCP-HW *
LOCAL CONTROL PANEL
(NO SCADA CONTROL)
(PARKSON)

24" INFLUENT FORCE MAIN

NOTES:
* SUPPLIED BY EQUIP.VENDOR

BID SET - NOT FOR CONSTRUCTION

NO.	ISSUED FOR BIDS	REVISIONS	BY	DATE

THOMAS & HUTTON
50 Park of Commerce Way
Savannah, GA 31405 • 912.234.5300
www.thomasandhutton.com

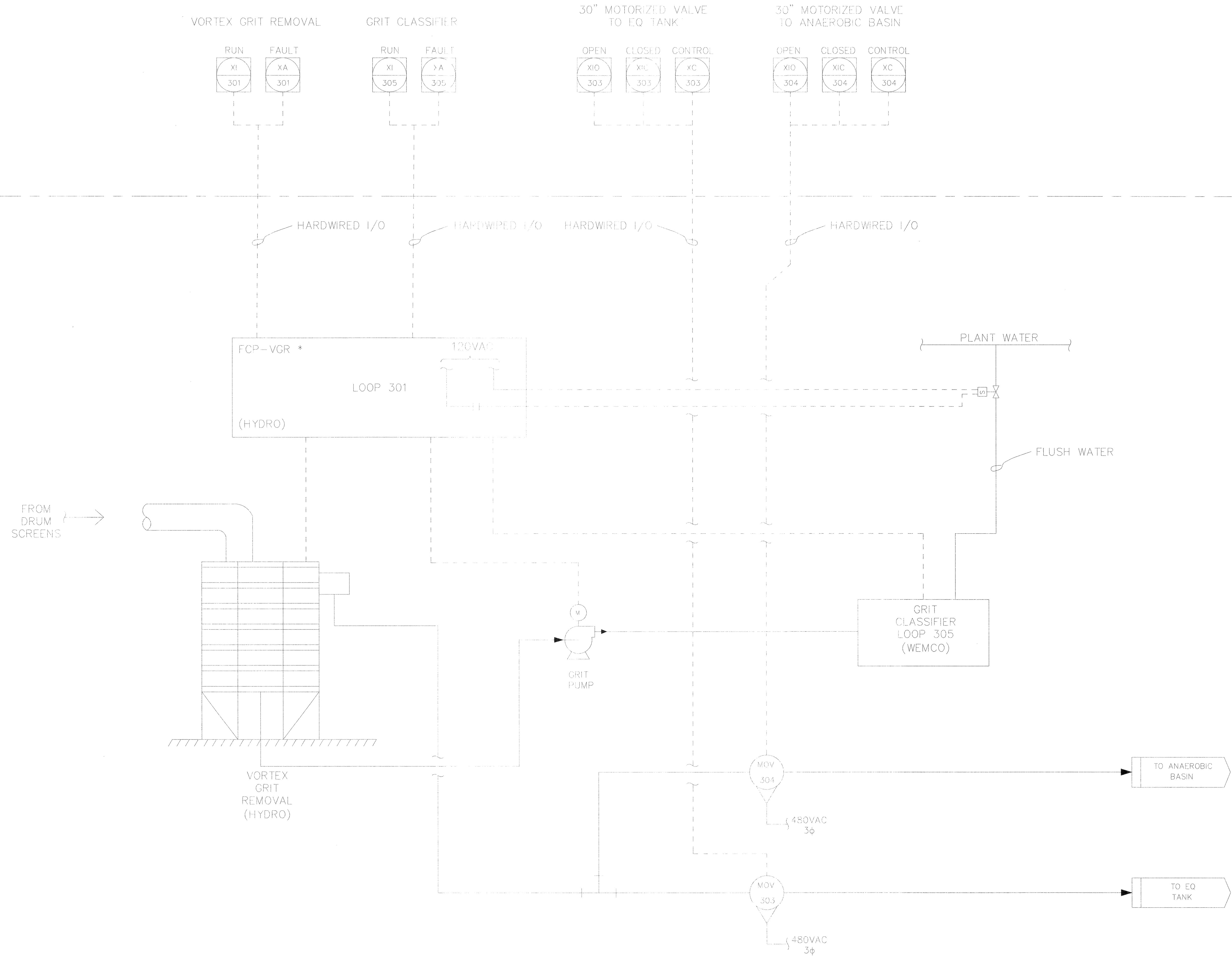
SAVANNAH
savannah.gov
TRAVIS FIELD WATER RECLAMATION FACILITY
HEADWORKS

JOB NO:	J-26963.0000
DATE:	1-16-19
DRAWN:	TH
DESIGNED:	TH
REVIEWED:	FB
APPROVED:	TH
SCALE:	1" = 1'

I-2

SCADA (EMERSON)

LCP-HW (EMERSON)



NOTES:
* SUPPLIED BY EQUIP.VENDOR

BID SET - NOT FOR CONSTRUCTION

NO	ISSUED FOR BIDS	REVISIONS	BY	DATE
0				

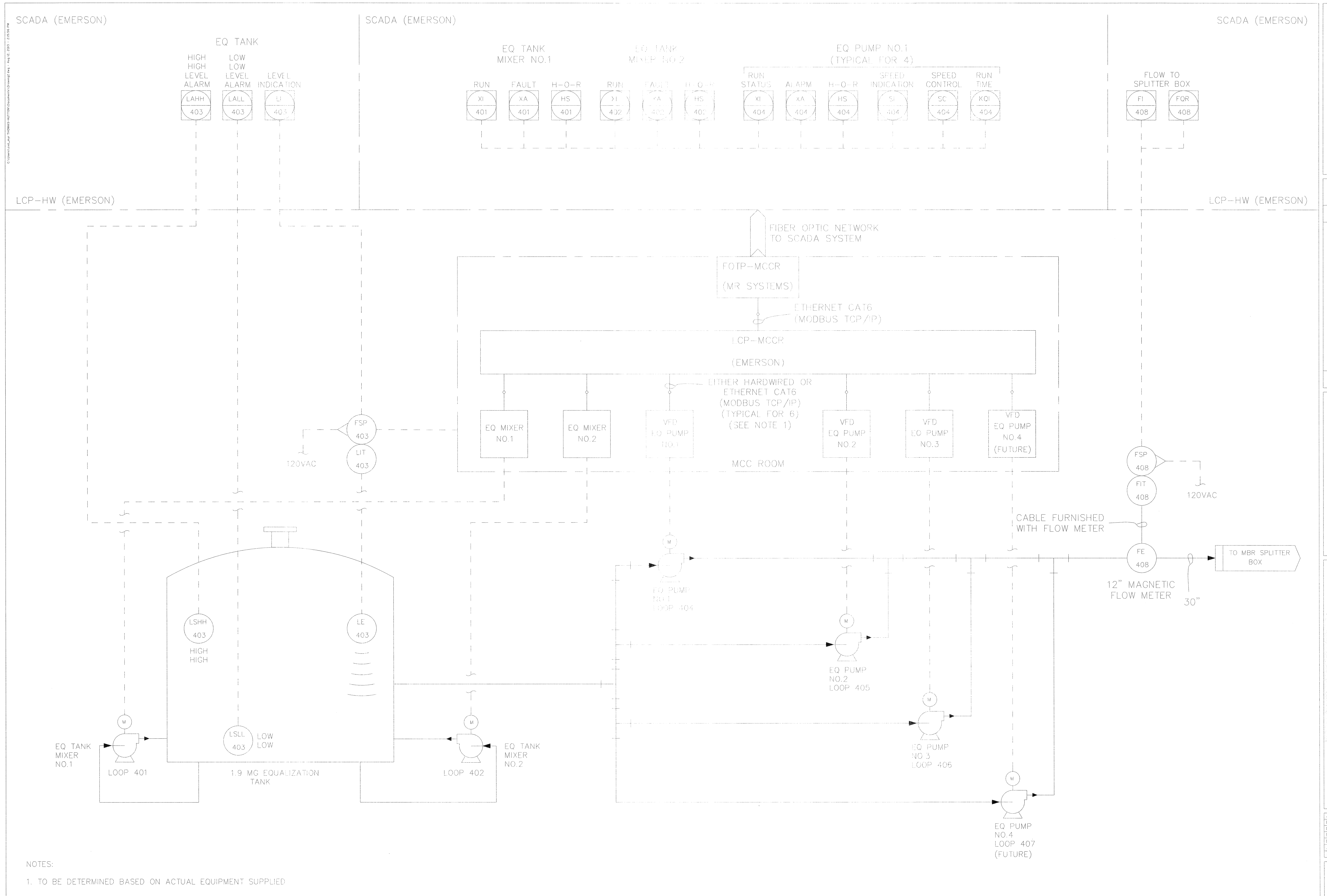
THOMAS & HUTTON
 50 Park of Commerce Way
 Savannah, GA 31405 • 912.234.5300
 www.thomasandhutton.com

SAVANNAH
 savannahga.gov

TRAVIS FIELD WATER RECLAMATION FACILITY
 HEADWORKS

JOB NO:	J-26963 0000
DATE:	11-16-19
DRAWN:	TH
DESIGNED:	TH
REVIEWED:	FS
APPROVED:	TH
SCALE:	1" = 1'

1-3



NOTES:
 1. TO BE DETERMINED BASED ON ACTUAL EQUIPMENT SUPPLIED

BID SET - NOT FOR CONSTRUCTION

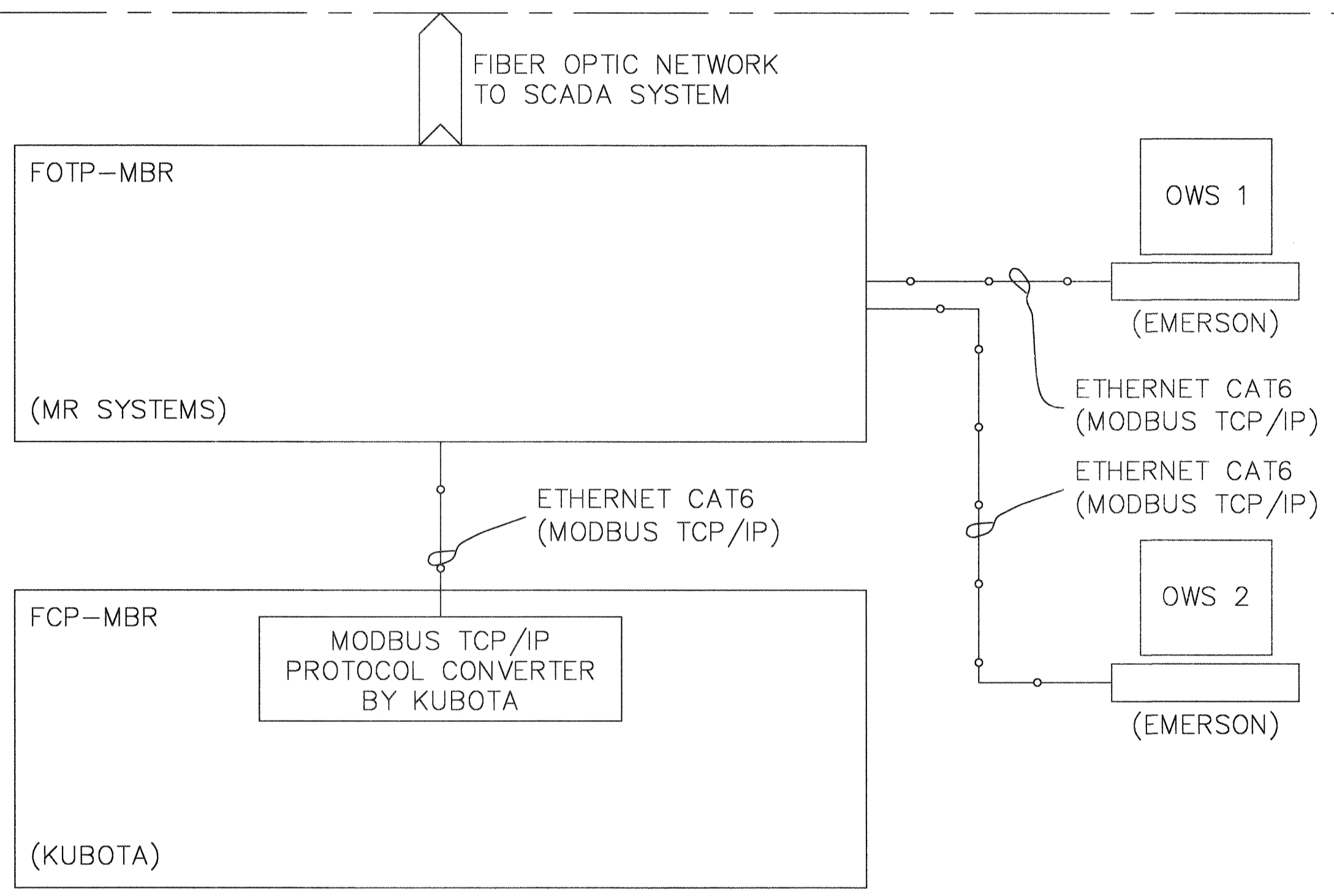
NO	ISSUED FOR BIDS	REVISIONS	BY	DATE

THOMAS & HUTTON
 50 Park of Commerce Way
 Savannah, GA 31405 • 912.234.5300
 www.thomasandhutton.com

SAVANNAH
 savannahga.gov
 TRAVIS FIELD WATER RECLAMATION FACILITY
 EQUALIZATION TANK & PUMP STATION

JOB NO:	J-26963 0000
DATE:	1-16-19
DRAWN:	TH
DESIGNED:	TH
REVIEWED:	FS
APPROVED:	TH
SCALE:	1" = 1'

C:\Users\jw\Documents\170816-171000\Thomas\Hutton\170816-171000\SCADA (EMERSON) - Aug 12, 2019 - 12:58 PM



NOTE: SEE KUBOTA P&ID DRAWINGS.

MEMBRANE SYSTEM

BID SET - NOT FOR CONSTRUCTION

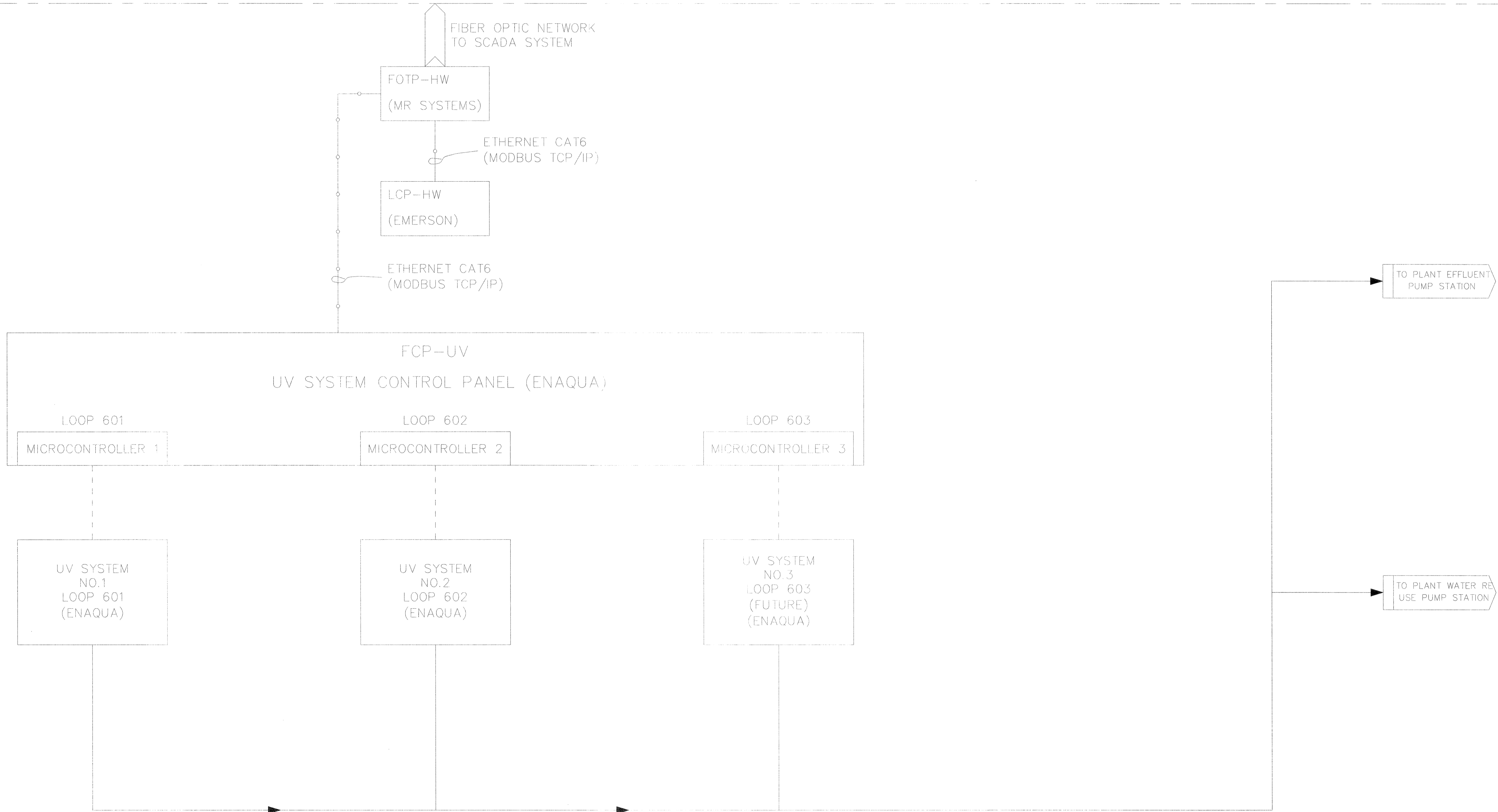
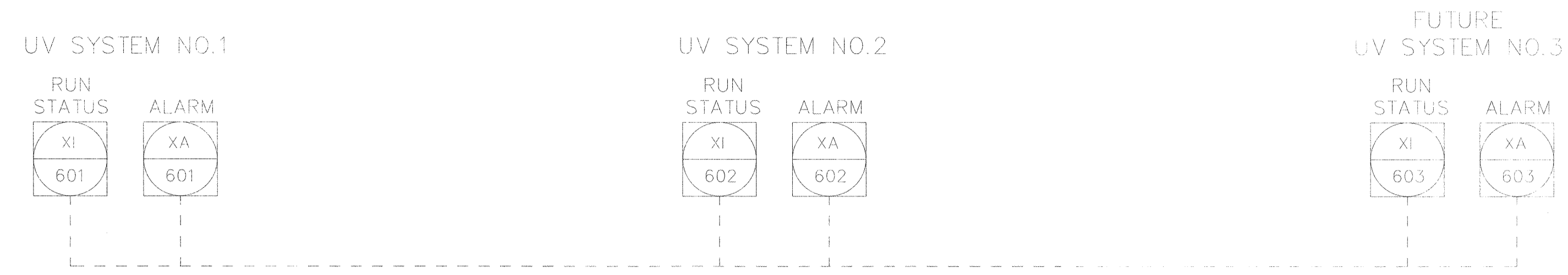
NO.	ISSUED FOR BIDS	REVISIONS	BY	DATE
0				

THOMAS & HUTTON
 50 Park of Commerce Way
 Savannah, GA 31405 • 912.234.5300
 www.thomasandhutton.com

SAVANNAH
savannahga.gov

TRAVIS FIELD WATER RECLAMATION FACILITY
 MEMBRANE SYSTEM

JOB NO:	J-26963.0000
DATE:	1-16-19
DRAWN:	TH
DESIGNED:	TH
REVIEWED:	FS
APPROVED:	TH
SCALE:	1" = 1'



BID SET - NOT FOR CONSTRUCTION

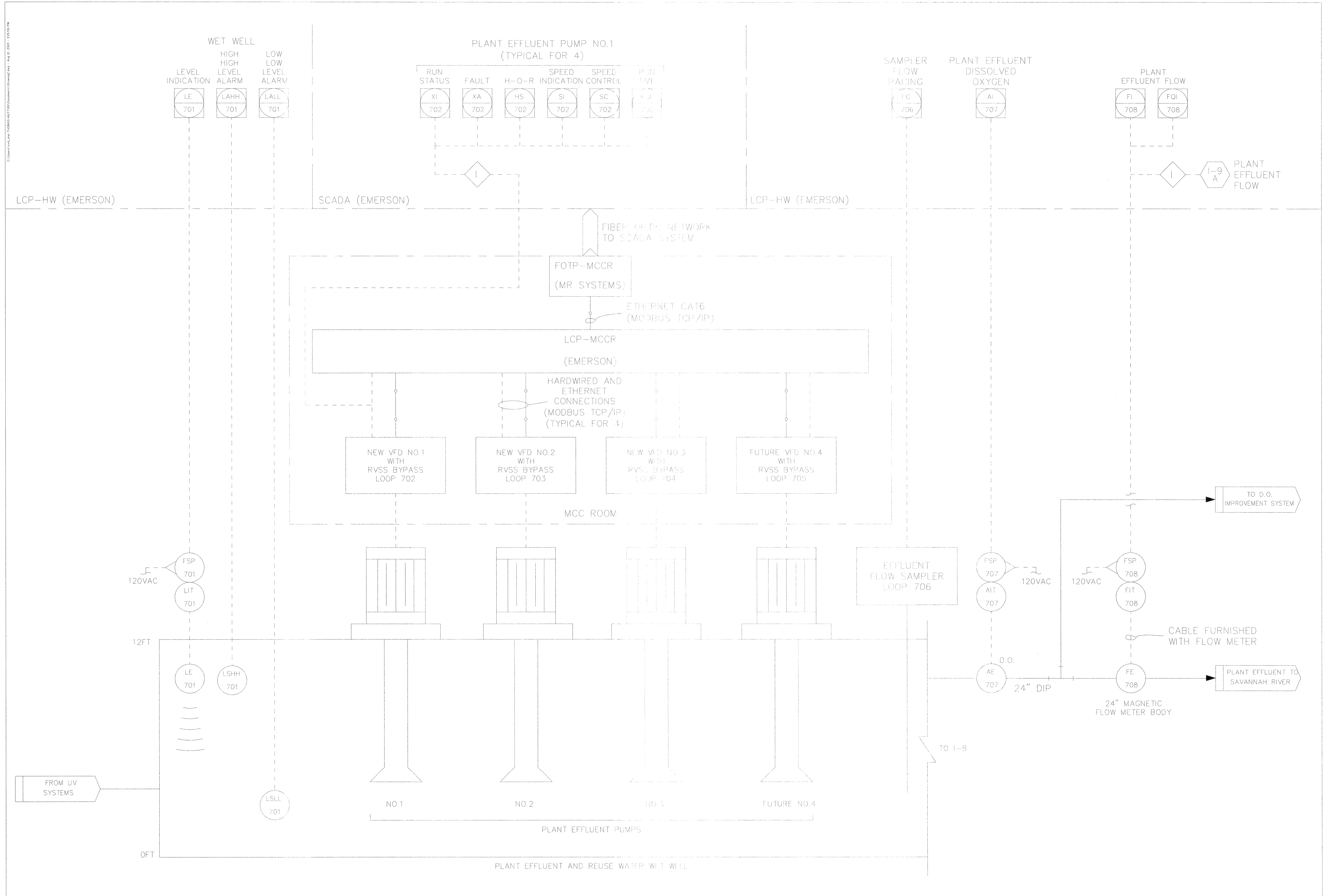
NO	ISSUED FOR BIDS	REVISIONS	BY	DATE
0				5-04-19

THOMAS & HUTTON
 50 Park of Commerce Way
 Savannah, GA 31405 • 912.234.5300
 www.thomasandhutton.com

SAVANNAH
savannahga.gov
 TRAVIS FIELD WATER RECLAMATION FACILITY
 UV DISINFECTION

JOB NO:	J-26963 0000
DATE:	1-16-19
DRAWN:	TH
DESIGNED:	TH
REVIEWED:	TS
APPROVED:	TH
SCALE:	1" = 1'

Customer/Project: 100045-001 Savannah River Plant - 100045-001 - 100045-001



BID SET - NOT FOR CONSTRUCTION

NO	ISSUED FOR BIDS	REVISIONS	BY	DATE
0				

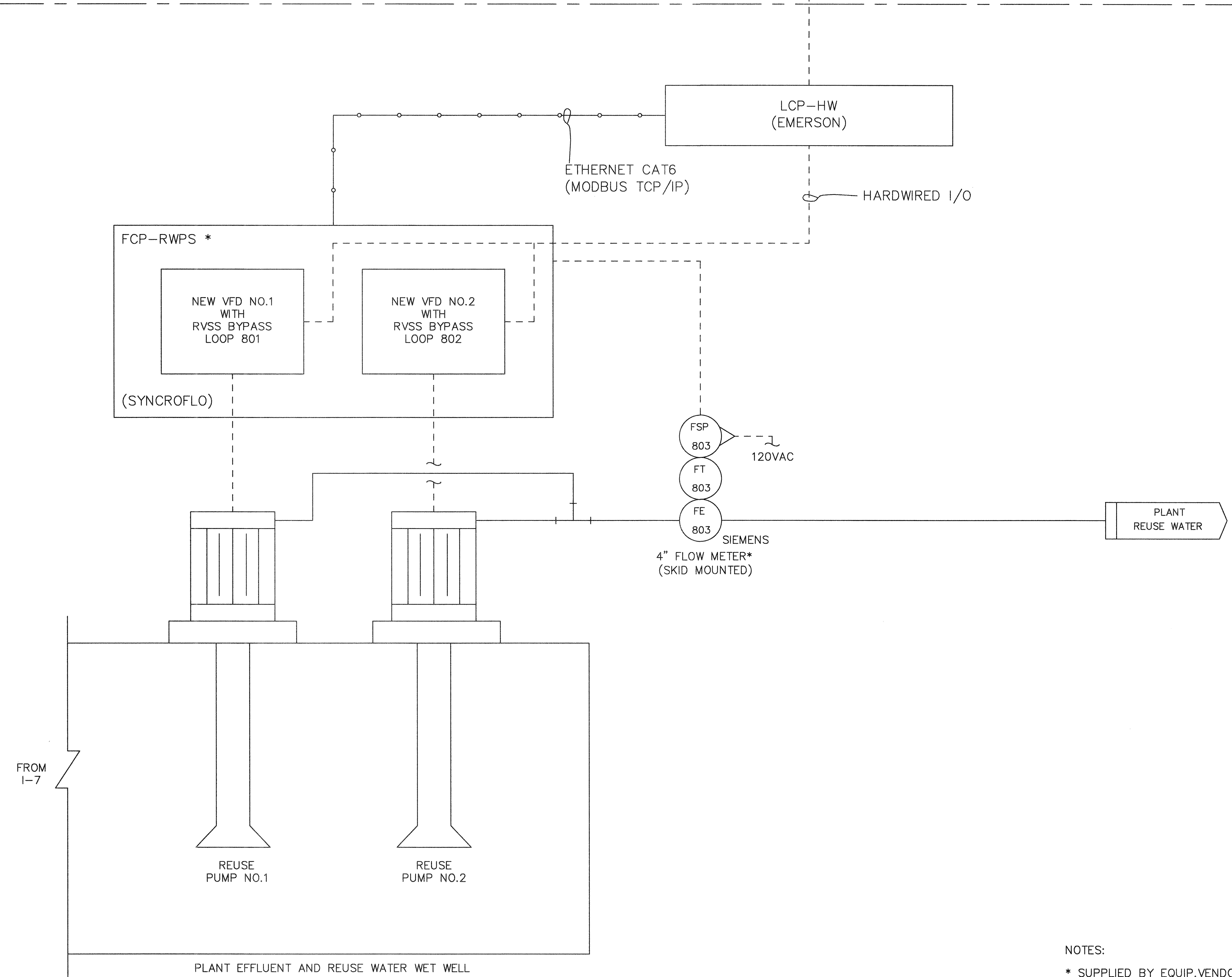
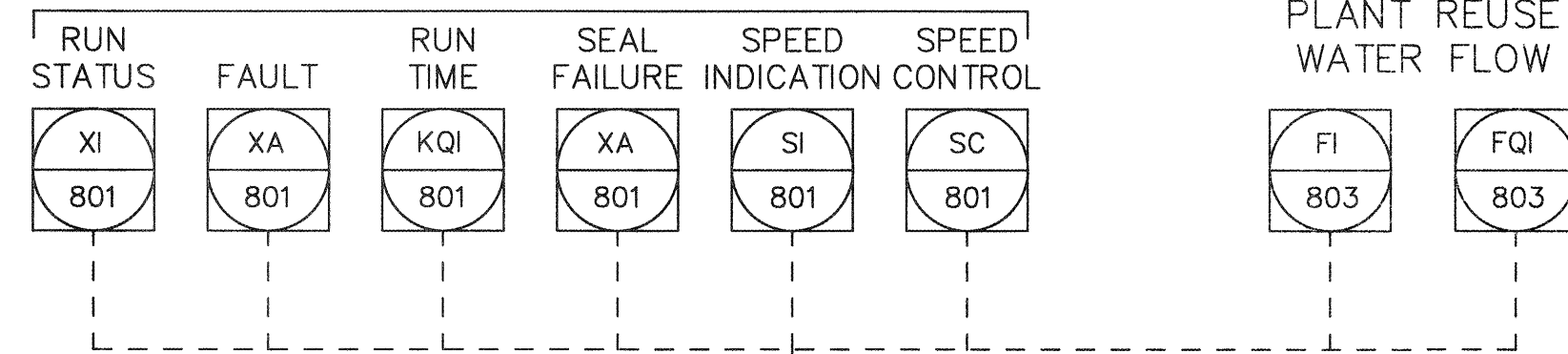
THOMAS & HUTTON
50 Park of Commerce Way
Savannah, GA 31405 • 912.234.5300
www.thomasandhutton.com

SAVANNAH savannahga.gov
TRAVIS FIELD WATER RECLAMATION FACILITY
PLANT EFFLUENT PUMP STATION

JOB NO:	J-26963 0000
DATE:	1-16-19
DRAWN:	TH
DESIGNED:	TH
REVIEWED:	FS
APPROVED:	TH
SCALE:	1" = 1'

SCADA (EMERSON)

PLANT REUSE WATER PUMP NO.1
(TYPICAL FOR 2)



NOTES:
* SUPPLIED BY EQUIP.VENDOR

BID SET - NOT FOR CONSTRUCTION

NO.	ISSUED FOR	BY	DATE
0			

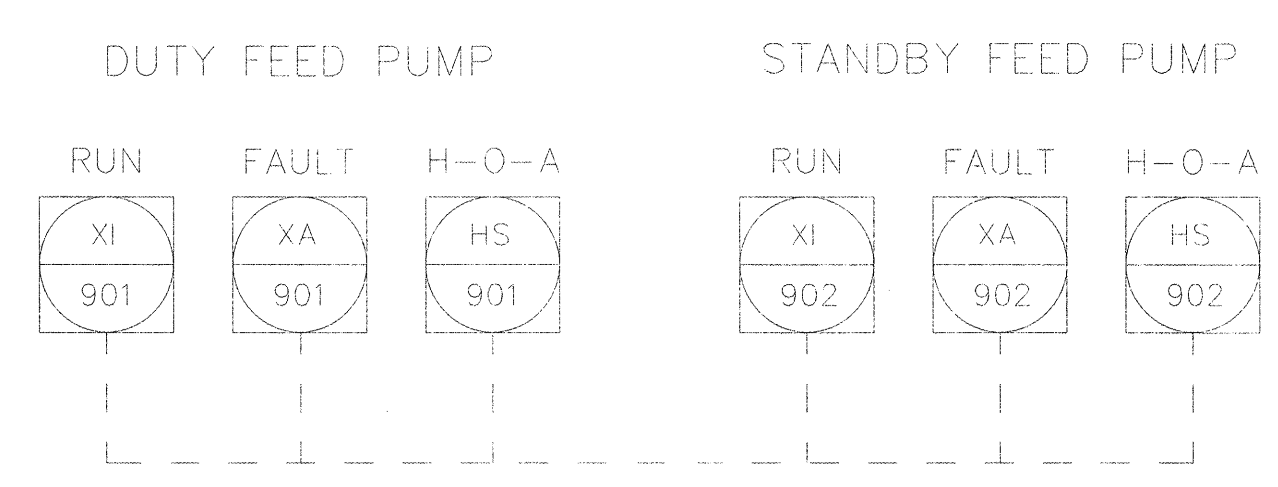
THOMAS & HUTTON
 50 Park of Commerce Way
 Savannah, GA 31405 • 912.234.5300
 www.thomashutton.com

SAVANNAH
 savannahga.gov

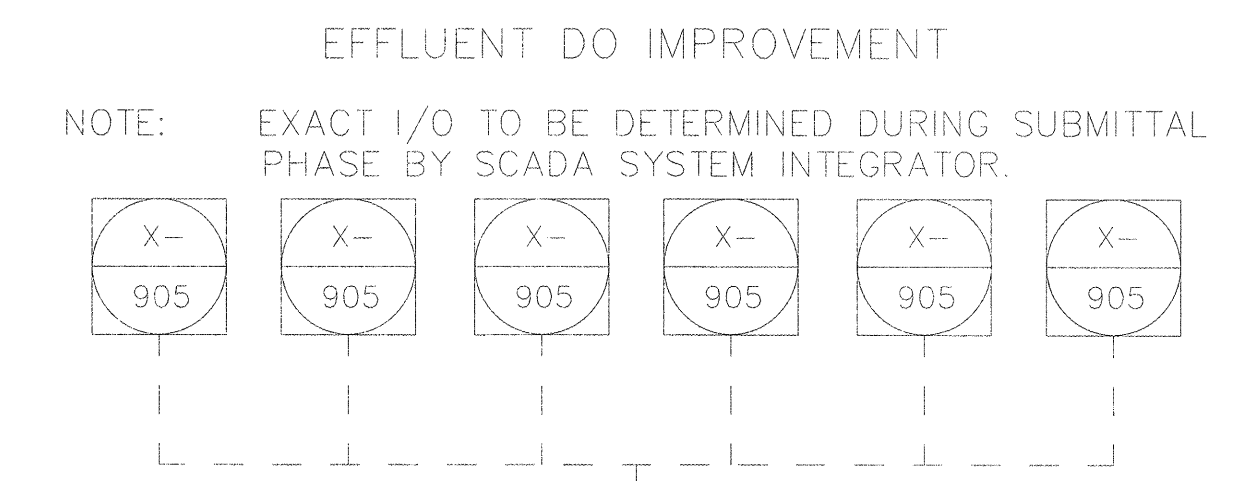
TRAVIS FIELD WATER RECLAMATION FACILITY
 PLANT REUSE WATER PUMP STATION

JOB NO:	J-26963-0000
DATE:	1-16-19
DRAWN:	TH
DESIGNED:	TH
REVIEWED:	FS
APPROVED:	TH
SCALE:	1" = 1'

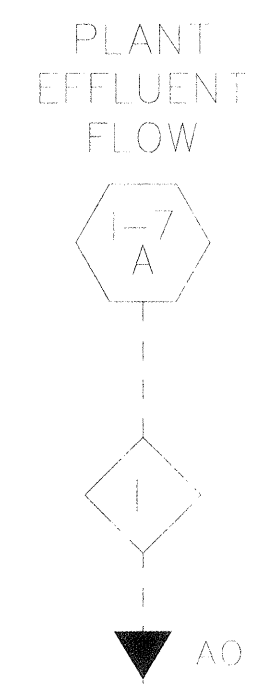
SCADA (EMERSON)



SCADA (EMERSON)



LCP-HW (EMERSON)



FIBER OPTIC NETWORK TO SCADA SYSTEM

FOTP-MCCR (MR SYSTEMS)

ETHERNET CAT6 (MODBUS TCP/IP)

LCP-MCCR (EMERSON)

HARDWIRED I/O

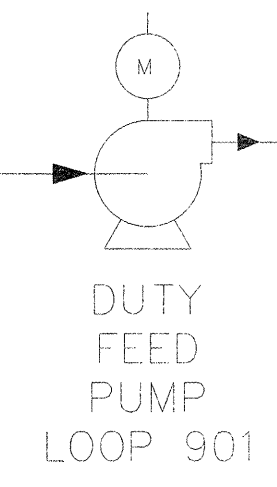
HARDWIRED I/O

NEW MCC DUTY FEED PUMP

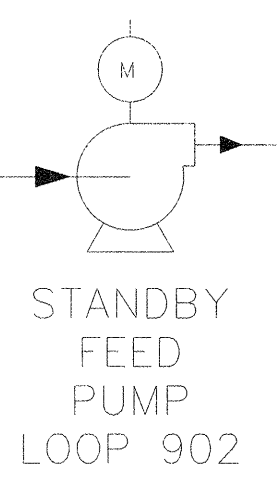
NEW MCC STANDBY FEED PUMP

MCC ROOM

FROM PLANT EFFLUENT PUMP STATION



DUTY FEED PUMP LOOP 901



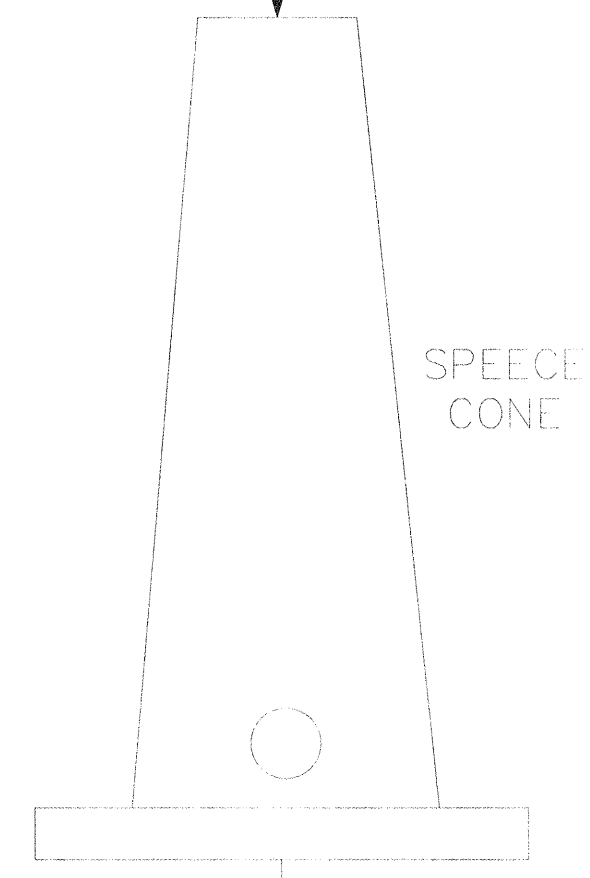
STANDBY FEED PUMP LOOP 902

DUTY COMPRESSOR LOOP 903

DUTY COMPRESSOR LOOP 904

FCP-SC * A-B PLC LOOP 905 (SPEECE CONE)

HARDWIRED I/O



SPEECE CONE

TO EFFLUENT FORCE MAIN

NOTES:

* SUPPLIED BY EQUIP.VENDOR

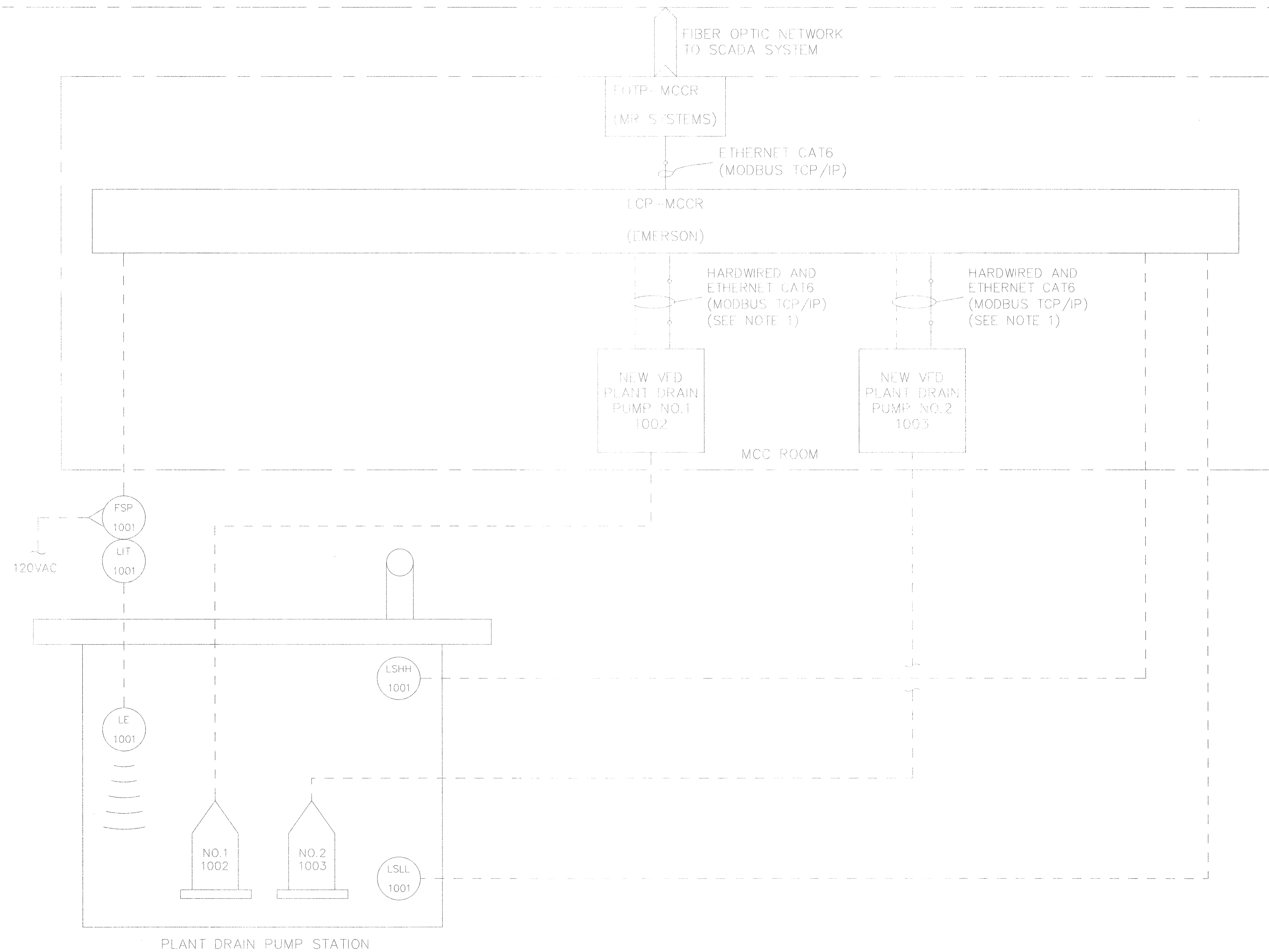
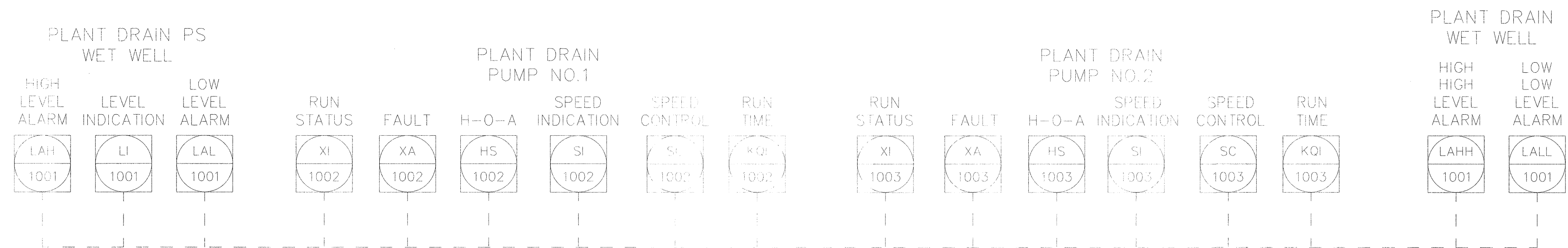
BID SET - NOT FOR CONSTRUCTION

NO	ISSUED FOR BIDS	REVISIONS	BY	DATE
0				

THOMAS & HUTTON
 50 Park of Commerce Way
 Savannah, GA 31405 • 912.234.5900
 www.thomasandhutton.com

SAVANNAH savannahga.gov
 TRAVIS FIELD WATER RECLAMATION FACILITY
 DO IMPROVEMENT SYSTEM

JOB NO:	J-26963 0000
DATE:	11-16-19
DRAWN:	TH
DESIGNED:	TH
REVIEWED:	FS
APPROVED:	TH
SCALE:	1" = 1'



NOTES:
1. TO BE DETERMINED BASED ON ACTUAL EQUIPMENT SUPPLIED

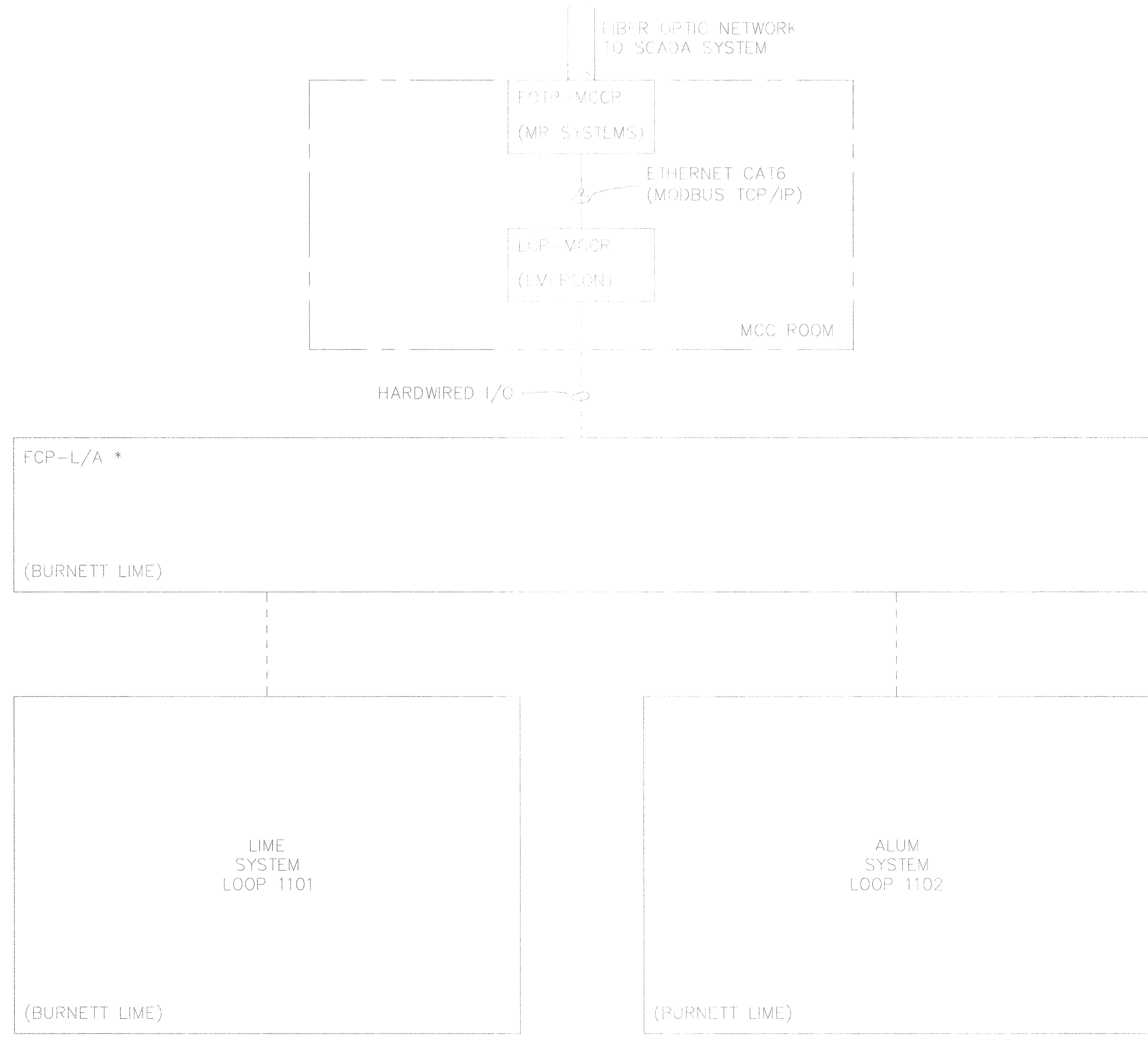
NO	ISSUED FOR BIDS	REVISIONS	CDR	DATE
0				

THOMAS & HUTTON
 50 Park of Commerce Way
 Savannah, GA 31405 • 912.234.5300
 www.thomasandhutton.com

SAVANNAH
 savannahga.gov

TRAVIS FIELD WATER RECLAMATION FACILITY
 PLANT DRAIN PUMP STATION

JOB NO:	J-26963 0000
DATE:	1-16-19
DRAWN:	TH
DESIGNED:	TH
REVIEWED:	FS
APPROVED:	TH
SCALE:	1" = 1'



BID SET - NOT FOR CONSTRUCTION

NO	ISSUED FOR BIDS	REVISIONS	BY	DATE
0				

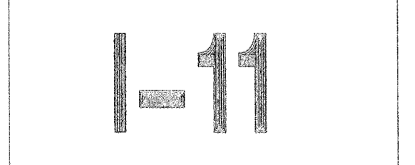
THOMAS & HUTTON
 50 Park of Commerce Way
 Savannah, GA 31405 • 912.234.5300
 www.thomassandhutton.com

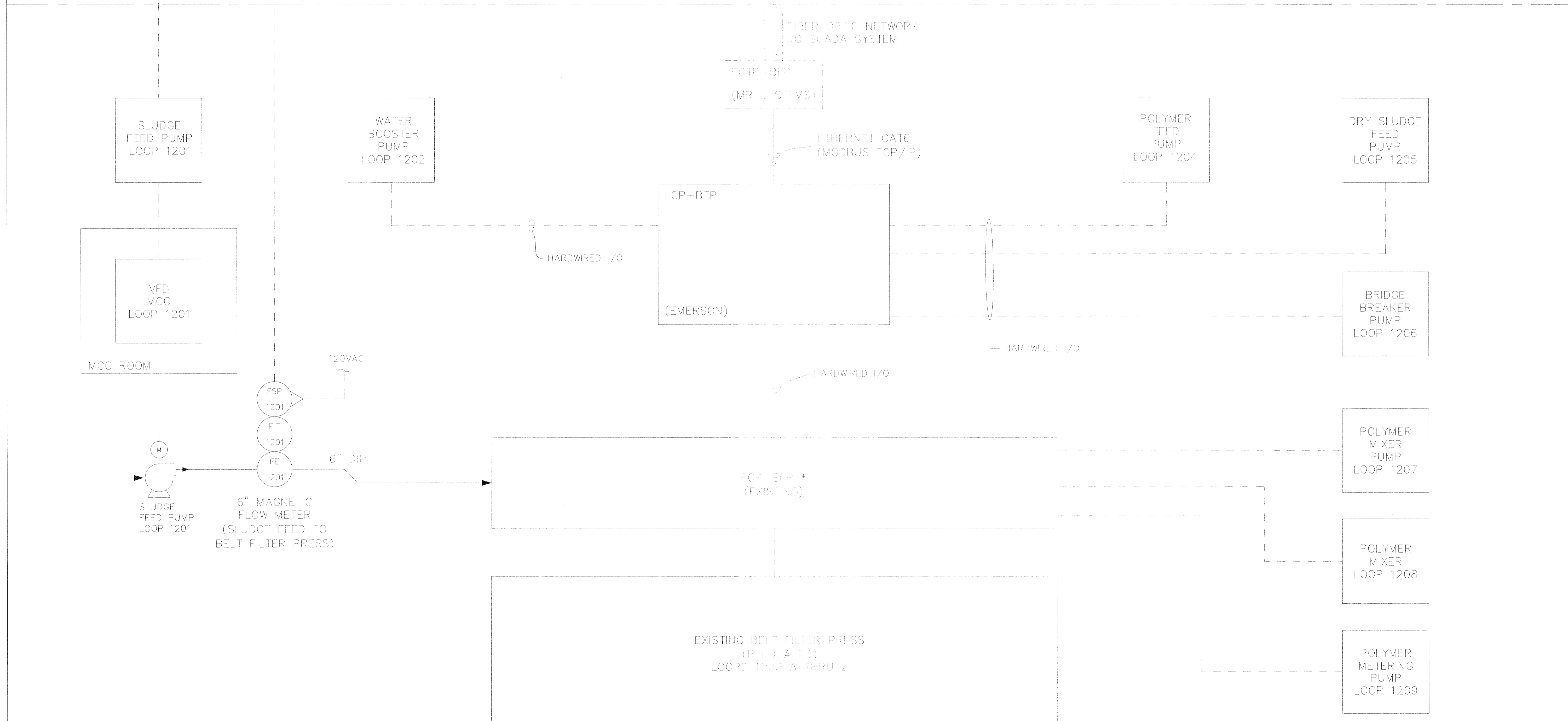
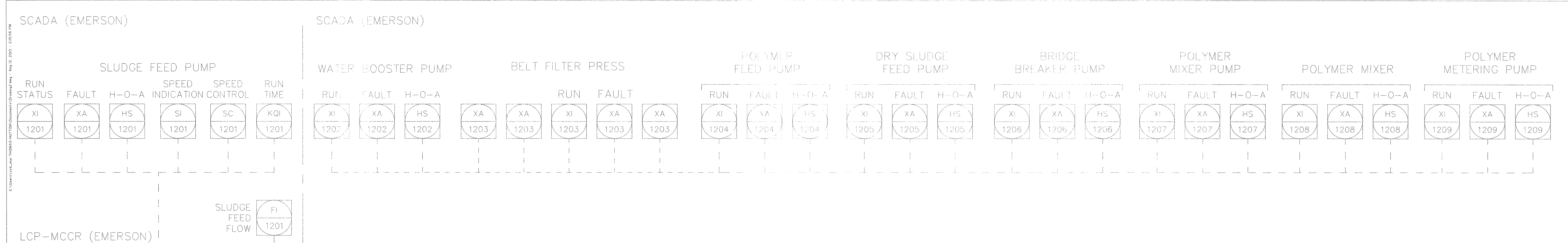
SAVANNAH
savannahga.gov

TRAVIS FIELD WATER RECLAMATION FACILITY
 LIME SLURRY / ALUM SYSTEM

JOB NO.	J-26963 0000
DATE:	1-16-19
DRAWN:	TH
DESIGNED:	TH
REVIEWED:	FS
APPROVED:	TH
SCALE:	1" = 1'

NOTES:
 * SUPPLIED BY EQUIP.VENDOR





NOTES:
 * SUPPLIED BY EQUIP.VENDOR

BID SET - NOT FOR CONSTRUCTION

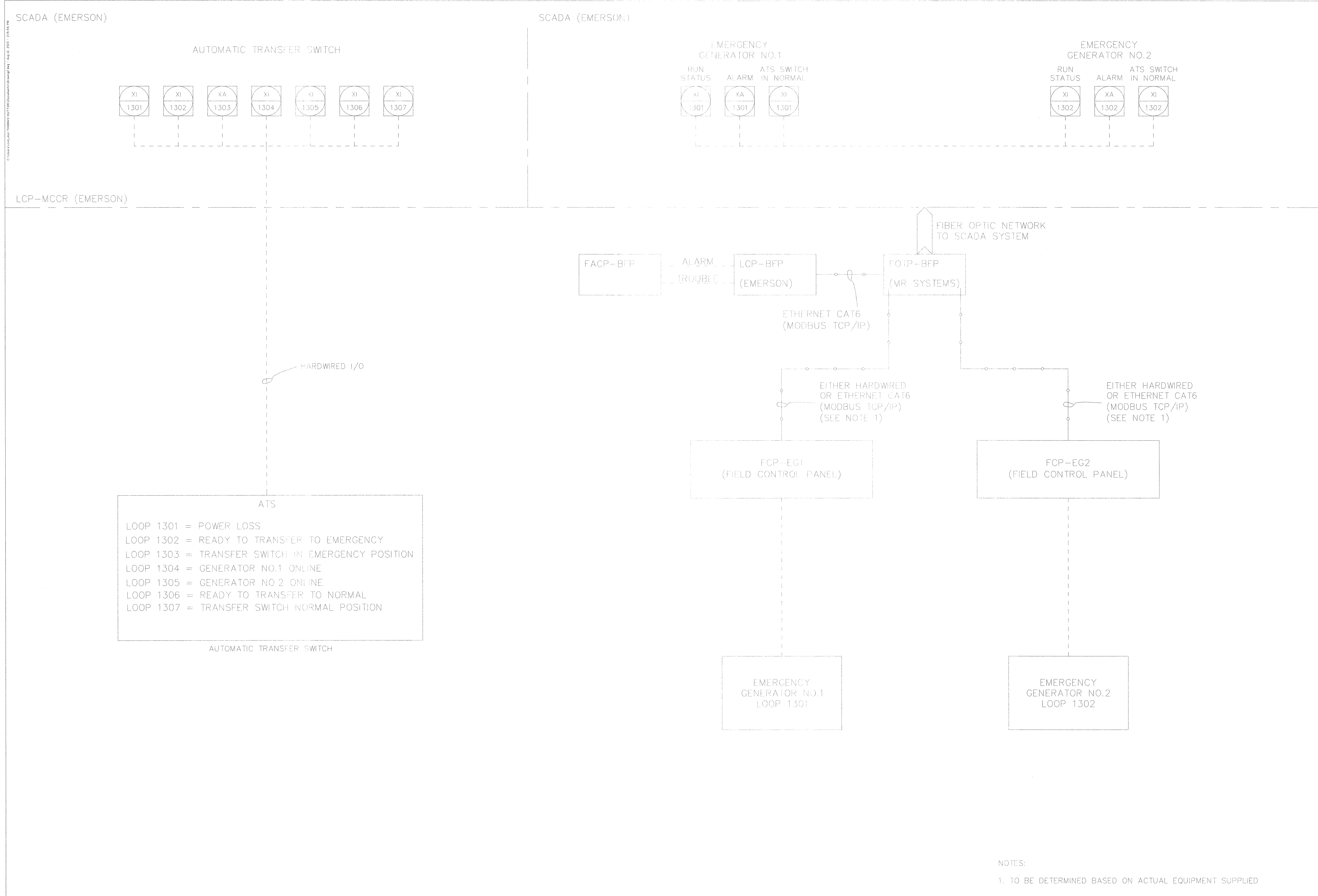
NO.	ISSUED FOR BIDS	REVISIONS	BY	DATE
0				

THOMAS & HUTTON
 50 Park of Commerce Way
 Savannah, GA 31405 • 912.234.5300
 www.thomasandhutton.com

SAVANNAH
 savannahga.gov

TRAVIS FIELD WATER RECLAMATION FACILITY
 BELT FILTER PRESS

JOB NO:	J-26963 0000
DATE:	1-16-19
DRAWN:	TH
DESIGNED:	TH
REVIEWED:	FS
APPROVED:	TH
SCALE:	1" = 1'



- ATS
- LOOP 1301 = POWER LOSS
 - LOOP 1302 = READY TO TRANSFER TO EMERGENCY
 - LOOP 1303 = TRANSFER SWITCH IN EMERGENCY POSITION
 - LOOP 1304 = GENERATOR NO.1 ONLINE
 - LOOP 1305 = GENERATOR NO.2 ONLINE
 - LOOP 1306 = READY TO TRANSFER TO NORMAL
 - LOOP 1307 = TRANSFER SWITCH NORMAL POSITION
- AUTOMATIC TRANSFER SWITCH

NOTES:
 1. TO BE DETERMINED BASED ON ACTUAL EQUIPMENT SUPPLIED

BID SET - NOT FOR CONSTRUCTION

NO	ISSUED FOR BIDS	REVISIONS	CDR	BY	DATE
0					5-01-19

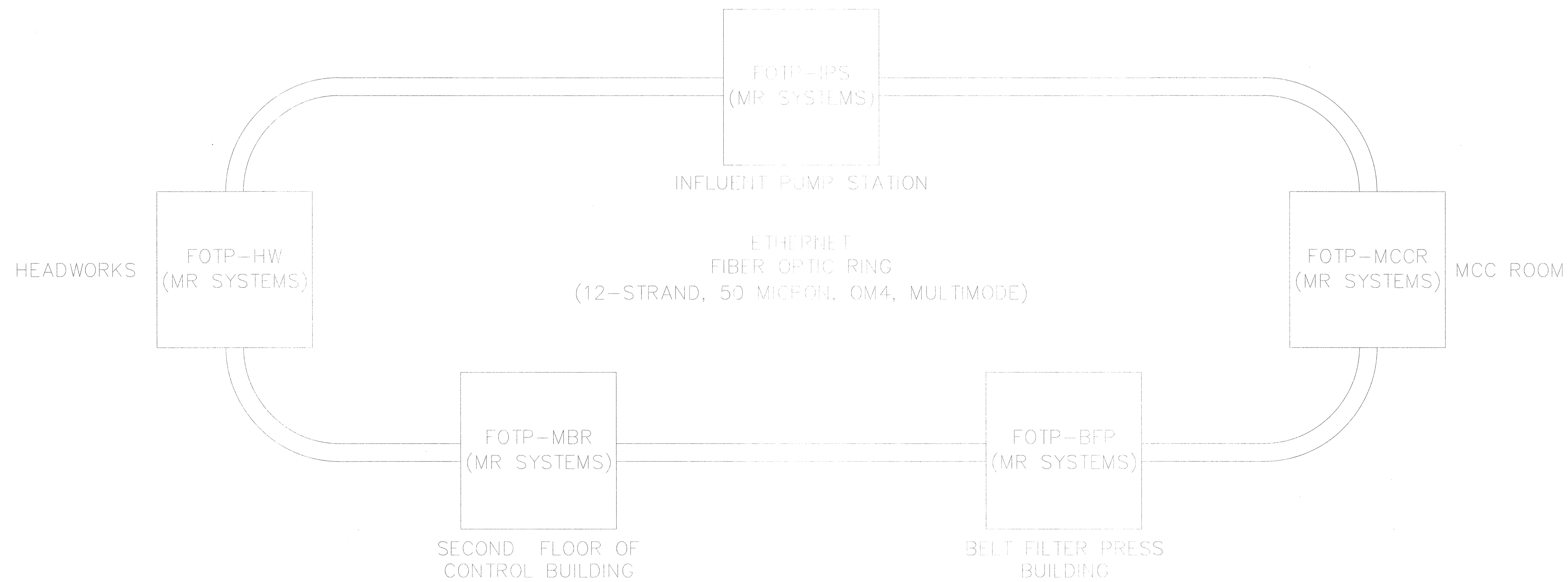
THOMAS & HUTTON
 50 Park of Commerce Way
 Savannah, GA 31405 • 912.234.5300
 www.thomasandhutton.com

SAVANNAH
 savannahga.gov

TRAVIS FIELD WATER RECLAMATION FACILITY
 GENERATORS

JOB NO:	J-GENERATORS
DATE:	4-16-19
DRAWN:	TH
DESIGNED:	TH
REVIEWED:	FS
APPROVED:	TH
SCALE:	1" = 1'

C:\Users\jchappin\Documents\Travis Field Water Reclamation Facility\Drawings\SCADA\I-14-19.dwg



NOTE: ALL ETHERNET COMMUNICATIONS TO BE MODBUS TCP/IP. NO EXCEPTIONS.

NO	ISSUED FOR BIDS	REVISIONS	BY	DATE
0				5-04-19

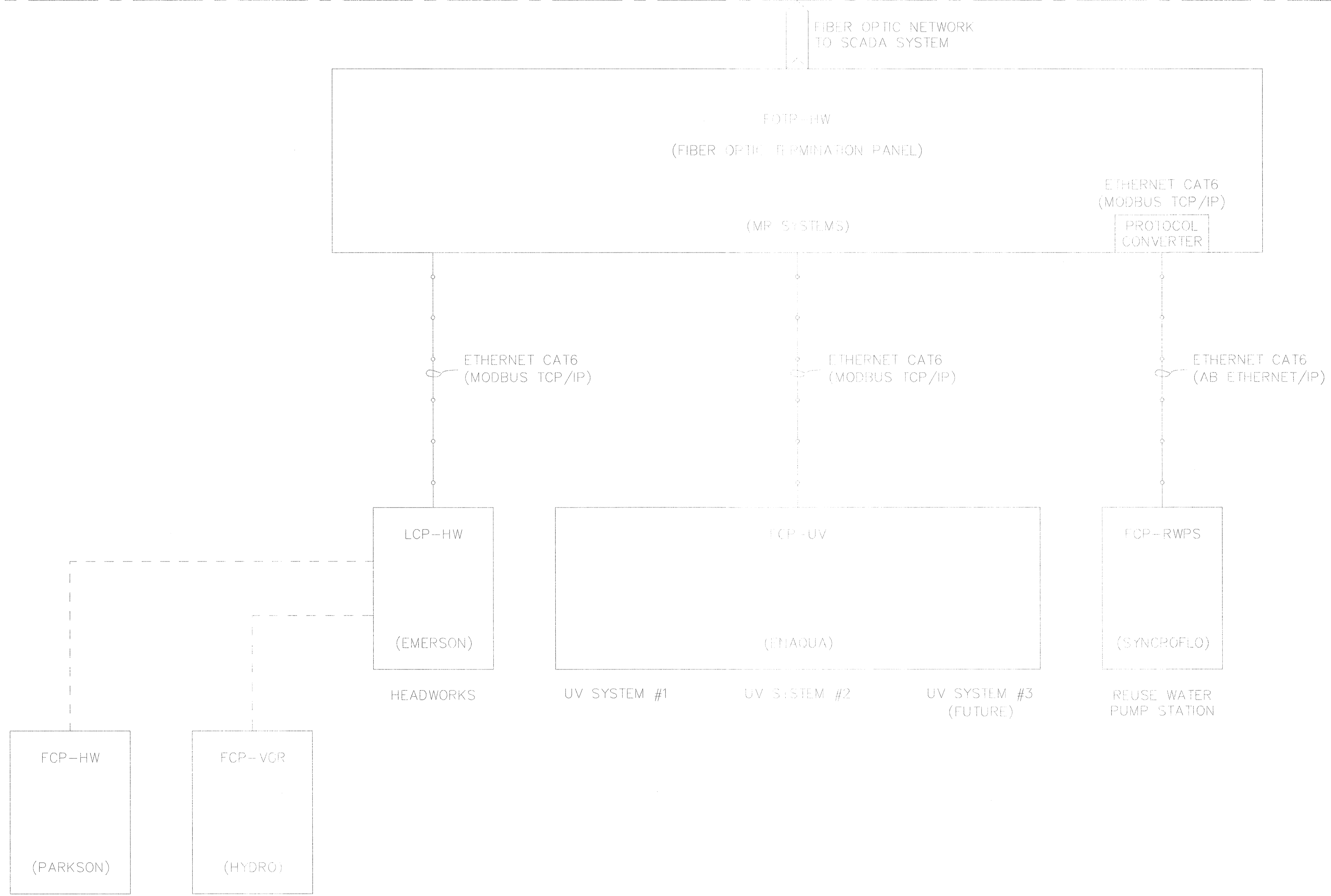
THOMAS & HUTTON
 50 Park of Commerce Way
 Savannah, GA 31405 • 912.234.5300
 www.thomasandhutton.com

SAVANNAH
savannahga.gov

TRAVIS FIELD WATER RECLAMATION FACILITY
 SCADA NETWORK DIAGRAM

JOB NO:	J-26963 0000
DATE:	1-16-19
DRAWN:	TH
DESIGNED:	TH
REVIEWED:	FS
APPROVED:	TH
SCALE:	1" = 1'

C:\Users\user\My Documents\THOMAS\THOMAS\THOMAS\THOMAS.dwg - April 12, 2011 - 1:25:54 PM



NO	ISSUED FOR BIDS	REVISIONS	BY	DATE
0				

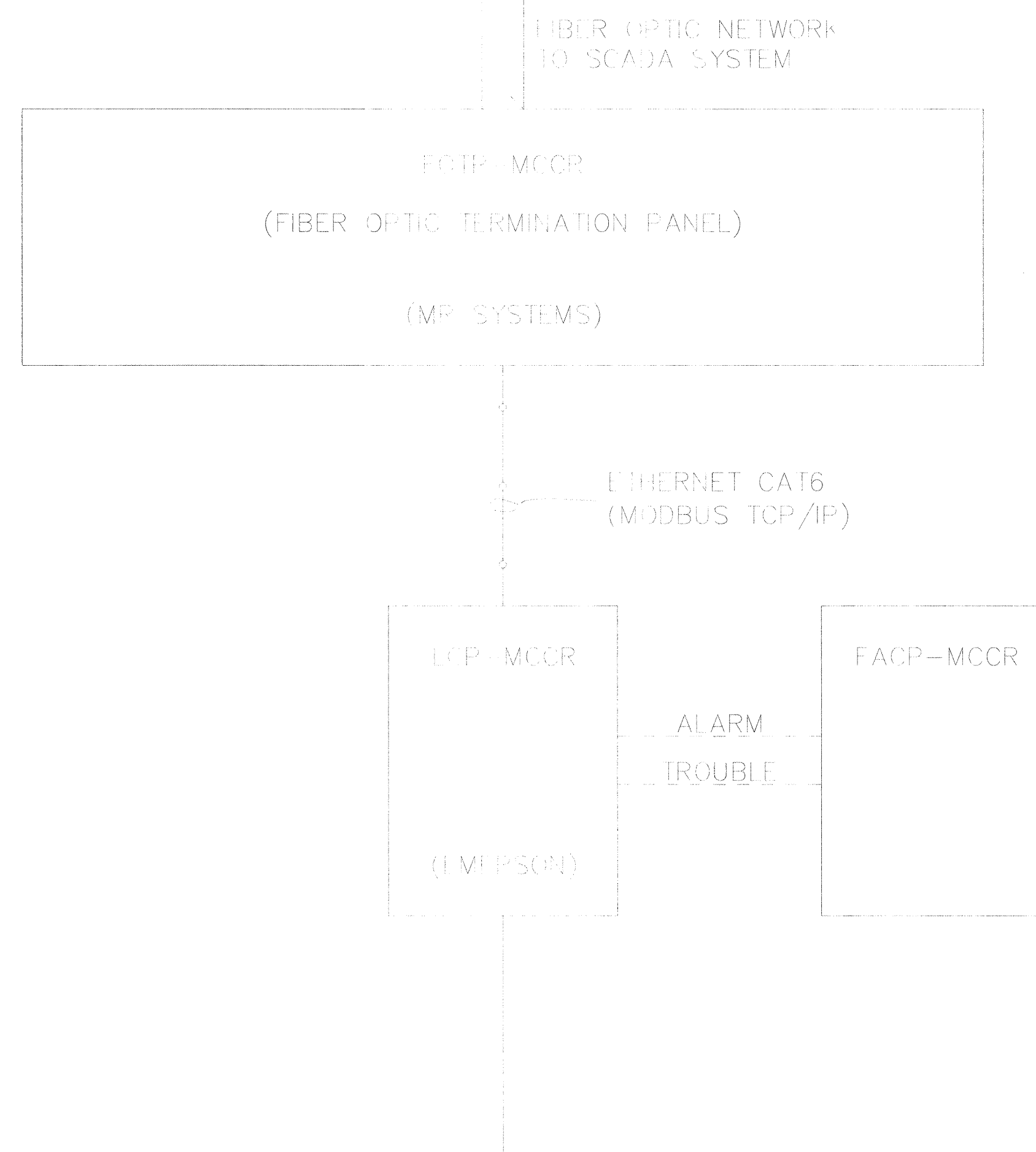
THOMAS & HUTTON
 50 Park of Commerce Way
 Savannah, GA 31405 • 912.234.5300
 www.thomasandhutton.com

SAVANNAH
savannahga.gov

TRAVIS FIELD WATER RECLAMATION FACILITY
 HEADWORKS LOCAL NETWORKING

JOB NO:	J-26963 0000
DATE:	1-16-19
DRAWN:	TH
DESIGNED:	TH
REVIEWED:	FS
APPROVED:	TH
SCALE:	1" = 1'

E:\J\26963\26963 0000\Drawings\Construction\Process\Process System\PLS\020819-01-04.dwg PLS01.dwg - Mar 20, 2019 - 8:45:52 AM



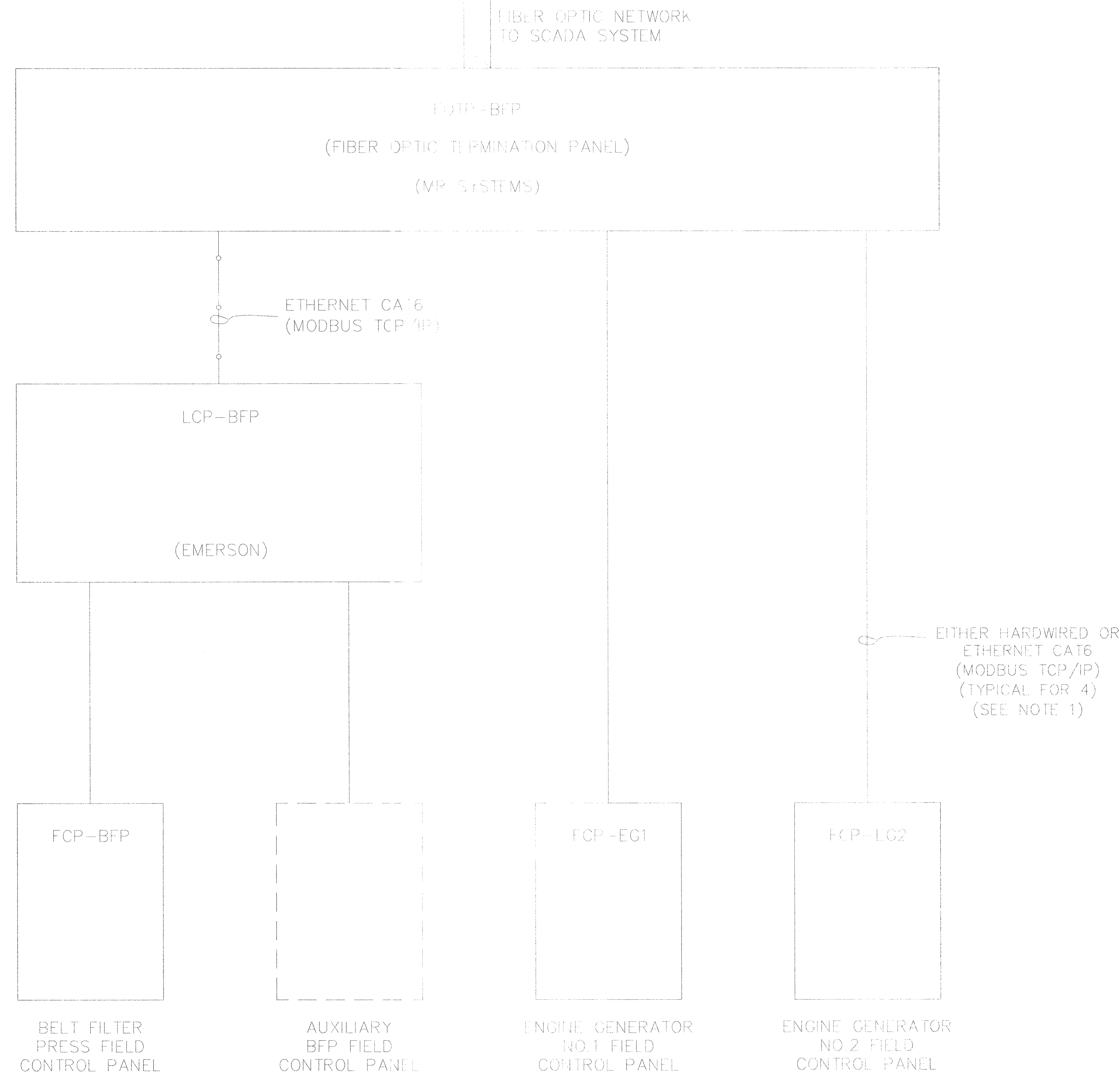
THE FOLLOWING EQUIPMENT IS EITHER HARDWIRED OR CONNECTED VIA ETHERNET CAT6 (MODBUS TCP/IP) TO LCP-MCCR:

EQ MIXER NO. 1	PLANT EFFLUENT PUMP #1 VFD	SPECE CONE DUTY FEED PUMP
EQ MIXER NO. 2	PLANT EFFLUENT PUMP #2 VFD	SPECE CONE STANDBY FEED PUMP
EQ PUMP NO. 1 VFD	PLANT EFFLUENT PUMP #3 VFD	PLANT DRAIN PUMP #1 VFD
EQ PUMP NO. 2 VFD	FUTURE PLANT EFFLUENT PUMP #4 VFD	PLANT DRAIN PUMP #2 VFD
EQ PUMP NO. 3 VFD	SLUDGE FEED PUMP VFD	
FUTURE EQ PUMP NO. 4 VFD		

NO	ISSUED FOR	REVISIONS	BY	DATE
0	ISSUED FOR BDS			5-0-19

JOB NO:	J-26963 0000
DATE:	1-16-19
DRAWN:	TH
DESIGNED:	TH
REVIEWED:	FS
APPROVED:	TH
SCALE:	1" = 1'

C:\Users\jwh\OneDrive\Documents\Drawings\1911 - 1911 - 1911.dwg



NOTES:
1. TO BE DETERMINED BASED ON ACTUAL EQUIPMENT SUPPLIED

NO.	ISSUED FOR BIDS	REVISIONS	BY	DATE
0				

THOMAS & HUTTON
 50 Park of Commerce Way
 Savannah, GA 31405 • 912.234.5300
 www.thomasthutton.com

SAVANNAH
 savannahga.gov

TRAVIS FIELD WATER RECLAMATION FACILITY
 BELT FILTER PRESS LCP-BFP EQUIPMENT MONITORED

JOB NO:	J-26963 0000
DATE:	1-16-19
DRAWN:	TH
DESIGNED:	TH
REVIEWED:	FS
APPROVED:	TH
SCALE:	1" = 1'