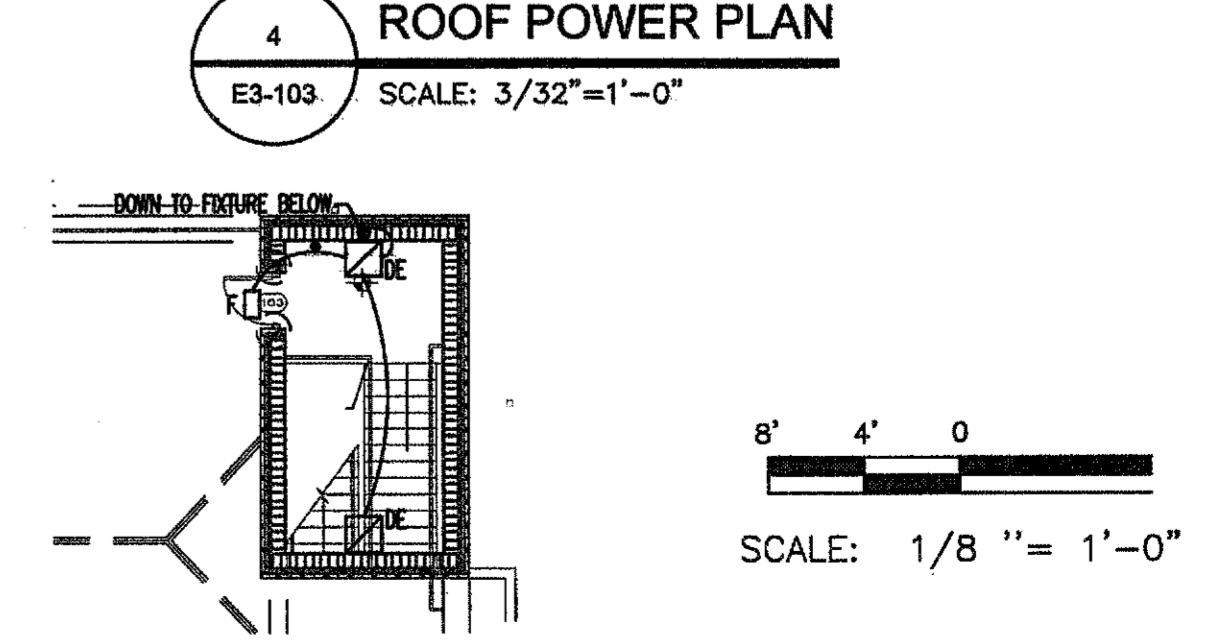
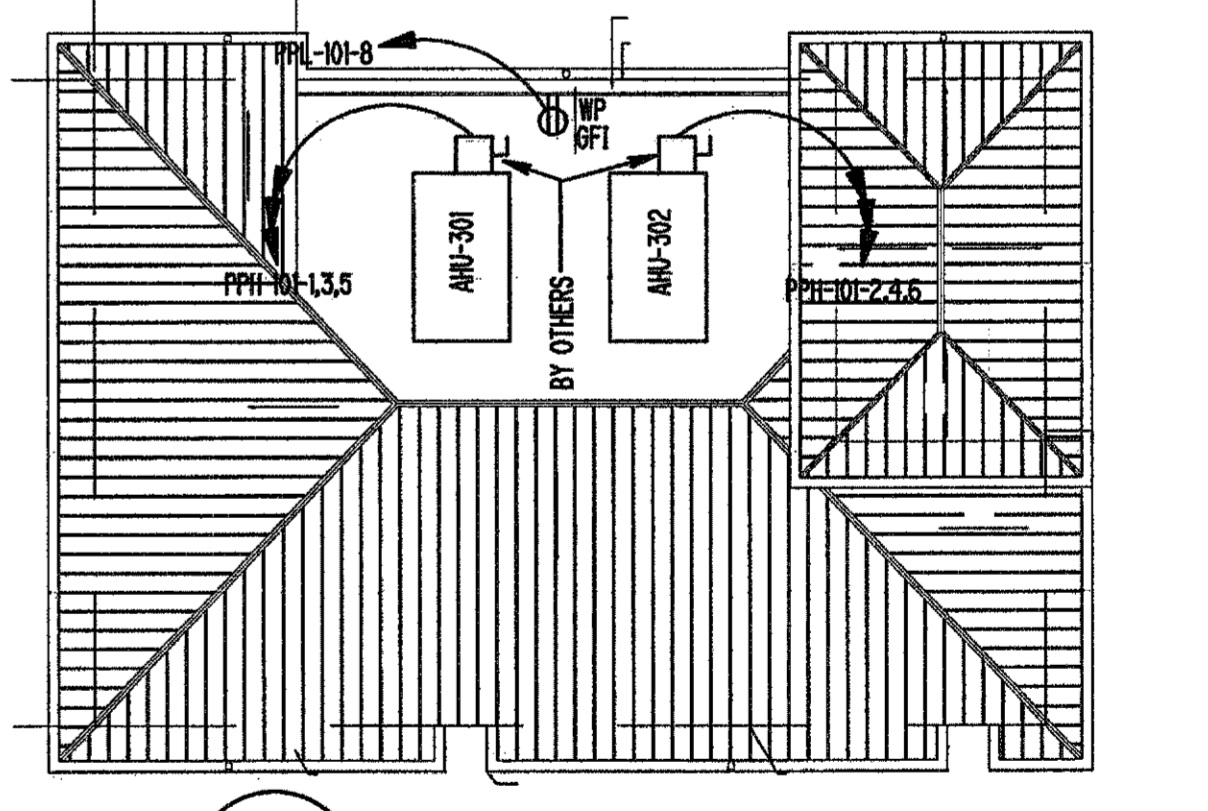


- GROUNDING KEY NOTES:**
- GROUND LOOP BURIED 30" BELOW GRADE AND 3' OUTSIDE FOUNDATION.
 - GROUNDING RODS SHALL BE SPACED APPROXIMATELY 50' O.C. MAX WITH TOP OF ROD 30" BELOW FINISHED GRADE.
- GROUNDING NOTES:**
- CONTRACTOR SHALL PROVIDE A PVC SLEEVE AT EACH GROUND CABLE PENETRATING THROUGH CONCRETE SLAB.
 - EQUIPMENT BONDING GROUNDING CONDUCTORS SHALL BE PER SPECIFICATION 16450.
 - GROUNDING TAP CONDUCTORS TO MAJOR ELECTRICAL EQUIPMENT SHALL BE #4/0 BARE COPPER. GROUNDING LOOP CONDUCTORS SHALL BE EXTENDED TO MAIN WATER PIPE AND TO BUILDING STRUCTURAL STEEL.
 - GROUNDING TAP CONDUCTOR TO MINOR EQUIPMENT INCLUDING STEP DOWN TRANSFORMER, VFDs, CONTROL PANELS, ETC. SHALL BE #2/0 BARE COPPER.
 - REFER TO SHEET E0-602 FOR GROUNDING INSTALLATION DETAILS AND NOTES.

- POWER KEYNOTES:**
- EXACT LOCATION OF MOTORS, DEVICES AND EQUIPMENT TO BE DETERMINED USING VENDOR AND/OR CONSTRUCTORS DRAWINGS. VENDORS DRAWINGS SHALL BE USED AS REQUIRED TO DETERMINE, COORDINATE AND VERIFY ENTRY OF RACEWAYS AND TERMINATION OF CONDUCTORS FOR VENDOR EQUIPMENT.
 - CONDUIT INSTALLED SHALL NOT INTERFERE WITH ACCESS AND SERVICING OF EQUIPMENT, AND SHALL NOT PREVENT REMOVAL OF FLOOR GRATING OR PLATES.
 - ALL CONDUITS PENETRATING SLAB SHALL BE INSTALLED WITH CONDUIT SEAL-OFFS AT 20" ABOVE SLAB.
 - EXCEPT AS NOTED, ALL RECEPTACLES SHALL BE MOUNTED 18 INCHES ABOVE FLOOR OR GRADE. NUMBER INDICATES CIRCUIT NUMBER.
 - INSTRUMENT SIGNAL CABLES FROM PUMP INSTRUMENT JUNCTION BOX TO PUMP MONITORING PANELS. PROVIDE TWO (2) 1" CONDUIT FROM EACH PUMP MONITORING PANEL TO ITS ASSOCIATED VFD. PROVIDE CABLES AND CONDUCTORS AS NEEDED.
 - FOR SECURITY CAMERA EQUIPMENT PROVIDED AND INSTALLED BY OWNER. PROVIDE JUNCTION BOX, EMPTY CONDUIT WITH PULL STRING. ROUTE CONDUIT TO THE HEADEND EQUIPMENT. COORDINATE LOCATION WITH OWNER AND SECURITY INTEGRATOR.
 - PROVIDE 4"x8"x3/4" TELEPHONE BACKBOARD OF FIRE RESISTANT PLYWOOD. PAINT ON ALL SIDES AND EDGES. COORDINATE COLOR WITH THE ARCHITECT. PROVIDE A 3"x12"x1/4" COPPER GROUND BUS BONDED TO BUILDING STEEL WITH A #6 COPPER CONDUCTOR.
 - PROGRAMMABLE LOGIC CONTROLLER. INCLUDE PLC LOCAL CONTROL PANEL WITH A MIN 13" LCD MONITOR AND KEYBOARD. INCLUDE TELEMETRY INTERFACE PANEL TO PROVIDE COMMUNICATION FOR REMOTE MONITORING OF ANY RADIO TELEMETRY UNIT.
 - PROVIDE DAISY CHAINED NETWORK CONNECTION FOR ALL PUMP MONITORING PANELS, VFD, RVSS, MCC, SWITCHGEAR, AND PLC. COORDINATE WITH MANUFACTURER FOR ADDITIONAL INFORMATION. RVSS AND VFD DRIVES SHALL BE FURNISHED WITH MOD BUS TYPE NETWORK INTERFACE. PROVIDE MOD BUS NETWORK CONNECTION (DAISY CHAIN) BETWEEN ALL SUBMERSIBLE PUMP DRIVES (RVSSs & VFDs) AND PLC PANEL. FOR ADDITIONAL DETAILS SEE CONTROL SYSTEM NETWORK DIAGRAM DWG I-002.
 - CCTV HEADEND EQUIPMENT TO BE FURNISHED BY OTHERS. PROVIDE POWER. PROVIDE EMPTY CONDUIT WITH PULL STRING TO PLC CABINET FOR NETWORKING WITH JET MIXING PUMP STATION CCTV EQUIPMENT AND R.M. CLAYTON.

- POWER KEYNOTES (CONTINUED):**
- PROVIDE 1" EMPTY CONDUIT CAPPED WITH PULL STRING BETWEEN THE PLC CABINET AND THE ODOR CONTROL PANEL. VERIFY CONDUIT IS FREE OF DEBRIS.
 - PTR-101A, B, C MOUNTED ABOVE PANELS SUSPENDED FROM CEILING ON UNISTRUT RACK.
 - PROVIDE LOCKABLE CAST WHILE-IN-USE WEATHERPROOF BOX/COVER, FLUSH MOUNT, PASS & SEYMOUR #WUCAST1. COORDINATE EXACT MOUNTING HEIGHT AND LOCATION WITH OWNER PRIOR TO ROUGH-IN. ALL BOXES SHALL BE KEYPED THE SAME.
 - ODOR CONTROL PANEL OCP-501 AND ODOR CONTROL GAS MONITORING PANEL OCGMP-510 SHALL BE MOUNTED A MINIMUM OF 3'-0" FROM ALL ODOR CONTROL EQUIPMENT.
 - 480VAC, 3 PHASE, 100A MANUAL TRANSFER SWITCH PROVIDED WITH GROUNDED QUICK DISCONNECT FOR PORTABLE GENERATOR. NEMA 4X. CONTRACTOR TO COORDINATE EXACT QUICK DISCONNECT TYPE WITH OWNER FURNISHED GENERATOR.
 - PROVIDE JUNCTION BOXES AND EMPTY CONDUIT WITH PULL STRING FOR CARD READER AND DOOR CONTACTS. PROVIDE POWER FOR ELECTRIC DOOR OPERATOR. ROUTE CONDUITS TO THE LOCATION OF ACCESS CONTROL HEADEND EQUIPMENT. ACCESS CONTROL EQUIPMENT INCLUDING CARD READERS, DOOR CONTACTS, AND ELECTRIC DOOR OPERATORS ARE FURNISHED BY OTHERS.
 - PROVIDE JUNCTION BOXES AND EMPTY CONDUIT WITH PULL STRING FOR LOUVER POSITION SWITCH. ROUTE CONDUIT TO THE LOCATION OF ACCESS CONTROL EQUIPMENT.
- LIGHTING NOTES:**
- EXCEPT AS NOTED, ALL LIGHT SWITCHES SHALL BE MOUNTED 48" A.F.F.
 - CONNECT EXIT SIGN, EMERGENCY BATTERY BALLAST, EMERGENCY LIGHT FIXTURE OR NIGHT LIGHTINGS (NL) TO UNSWITCHED CONDUCTOR OF LOCAL LIGHTING CIRCUIT. SHOWN CONNECTED TO NEAREST FIXTURE FOR DRAWING CLARITY AND CIRCUIT SELECTION PURPOSE ONLY.
 - LIGHTING SYSTEM MAY ALSO BE SWITCHED VIA CONTACTORS AND OTHER CONTROL DEVICES PER ENERGY MANAGEMENT SYSTEM DRAWINGS.
 - EXTERIOR LIGHTING SHALL BE SWITCHED VIA PHOTOCELL/TIMELOCK, CONTACTOR AND OTHER CONTROL DEVICES PER ENERGY MANAGEMENT SYSTEM DRAWINGS. REFER TO PHOTOCELL/TIMELOCK CONTROL DIAGRAM THIS DRAWING.

- GENERAL NOTES:**
- CONTRACTOR SHALL COORDINATE EXACT LOCATION OF ALL DEVICES PRIOR TO ROUGH-IN.
 - SEE DRAWING E3-601 FOR PANEL SCHEDULES (THIS DWG. ONLY).
 - ALL HVAC UNITS SHALL HAVE INTEGRAL DISCONNECTS PROVIDED BY DIVISION 15 UNLESS SPECIFICALLY NOTED.
 - SEE DRAWING E0-601 FOR MECHANICAL EQUIPMENT CONNECTION CONNECTION SCHEDULE.
 - LIGHTING, POWER, CONTROL AND INSTRUMENTATION CONDUITS MAY ALSO BE EMBEDDED IN CONCRETE SLAB. MINIMUM SIZE CONDUIT EXPOSED SHALL BE 3/4". MINIMUM SIZE CONDUIT IN SLAB SHALL BE 1".
 - CONDUIT, BOXES, FITTINGS AND SUPPORTS SHALL BE SUITABLE FOR HAZARDOUS AND/OR CORROSIVE AREAS AS SPECIFIED ON THE AREA CLASSIFICATIONS DRAWING.
 - CONDUCTORS AND RACEWAY TO COMMUNICATIONS NETWORK, SEE ALSO ELECTRICAL SITE PLANS FOR APPROXIMATE ROUTE OF RACEWAYS TO BUILDING.
 - INSTALL INSTRUMENT POWER AND CONTROL PER MANUFACTURERS REQUIREMENTS.
 - ALL INSTRUMENTATION CABLE AND CONDUITS SHALL BE BY DEFAULT, 2#14 - 3/4" FOR DISCRETE SIGNALS AND 1-2/C#16SH. - 3/4"GR.C. FOR ANALOG SIGNALS, UNLESS NOTED OTHERWISE.
 - ALL BRANCH CIRCUIT FEEDERS SHALL BE BY DEFAULT, 2#12 & #12G. - 3/4" UNLESS OTHERWISE NOTED.
 - CABLE AND CONDUIT SIZES FOR MOTORS AND OTHER DEVICES CONNECTED TO ELECTRICAL EQUIPMENT LIKE MCC'S, VFD'S, RVSS DRIVES ARE SHOWN ON SINGLE LINE DRAWING ONLY (E3-101).



PEACHTREE CREEK SOUTH FORK RELIEF STORAGE AND PUMPING STATION
 DEPARTMENT OF WATERSHED MANAGEMENT
 CITY OF ATLANTA

100 PERCENT BID PACKAGE
 10/28/12
 REV DATE

THIS LINE IS ONE INCH LONG WHEN PLOTTED FULL SCALE
 THIS DRAWING MUST BE USED IN CONJUNCTION WITH THE APPLICABLE OR GOVERNING TECHNICAL SPECIFICATIONS AND OTHER CONTRACT DOCUMENTS.
 PROJECT NO: FC-6260
 DATE: OCTOBER 2012
 RESP PROF: KCV
 DESIGNER: AWP
 CHECKER: BLB
 SHEET TITLE
 ELECTRICAL
 03 - DIVERSION FACILITY PUMP STATION
 ELECTRICAL PLANS
 UPPER LEVEL
 SHEET NO. E3-103 REV. 0