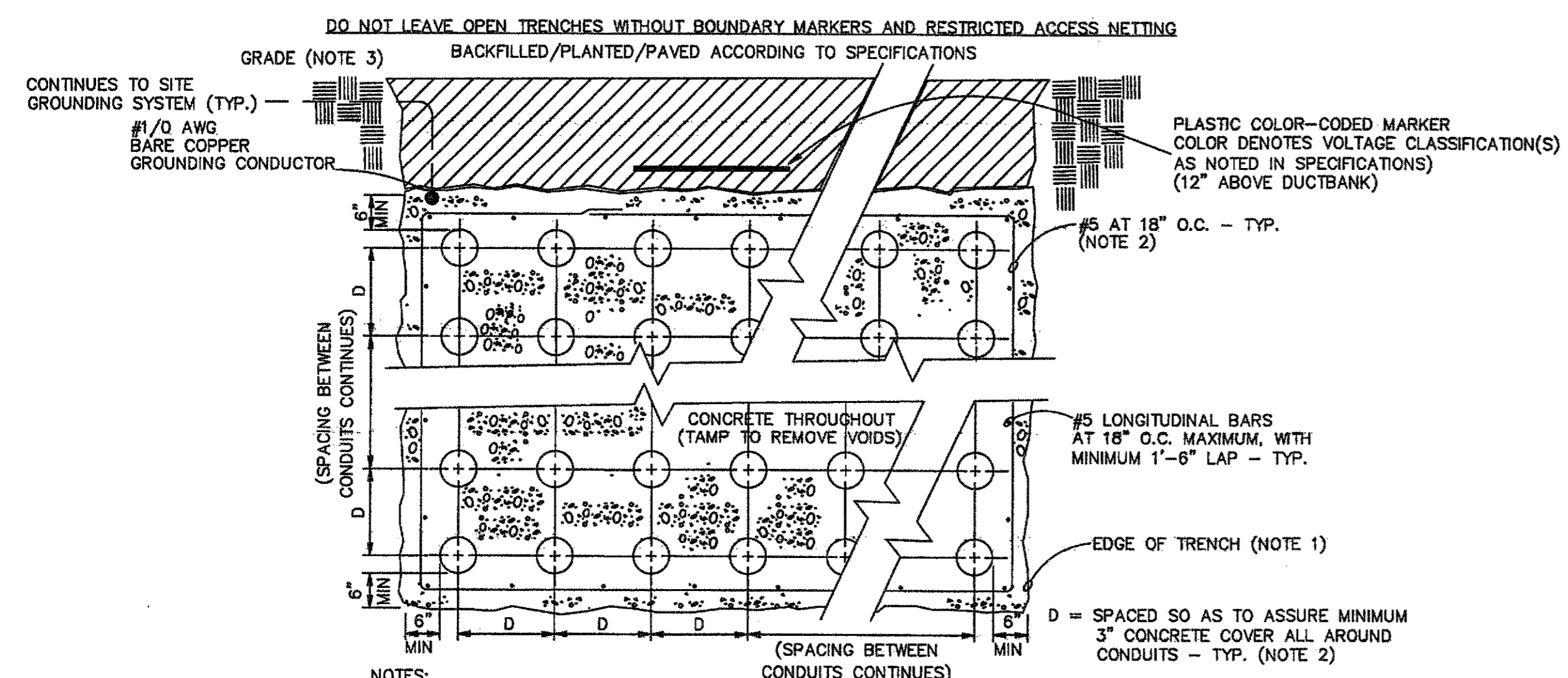


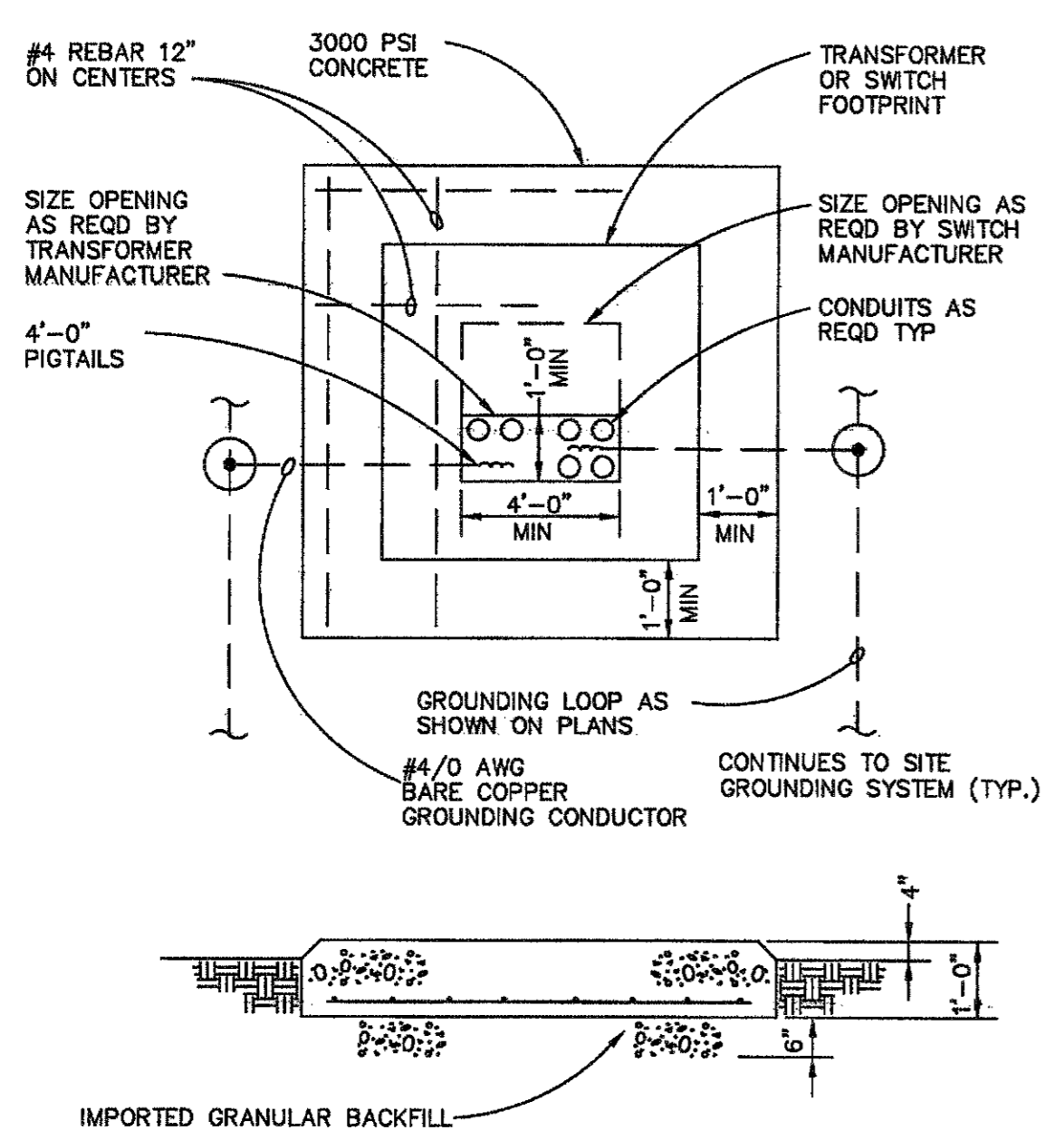
F
E
D
C
B
A



- NOTES:
1. OPEN TRENCH TO PROPER WIDTH TO ACCOMMODATE DUCTBANK TO DEPTH REQUIRED. PROVIDE GRANULAR FILL UNDER ALL CONCRETE ENCASED DUCT RUNS.
 2. TIE CONDUITS TO FRAME BAR TO MAINTAIN SPACING BEFORE CONCRETED IN TRENCH.
 3. COORDINATE REMOVAL OF TRENCH MATERIAL WITH WORK OF OTHER TRADES. PROVIDE TEMPORARY STEEL TRAFFIC PLATES SO LONG AS ACCESS ACROSS TRENCH IS REQUIRED.

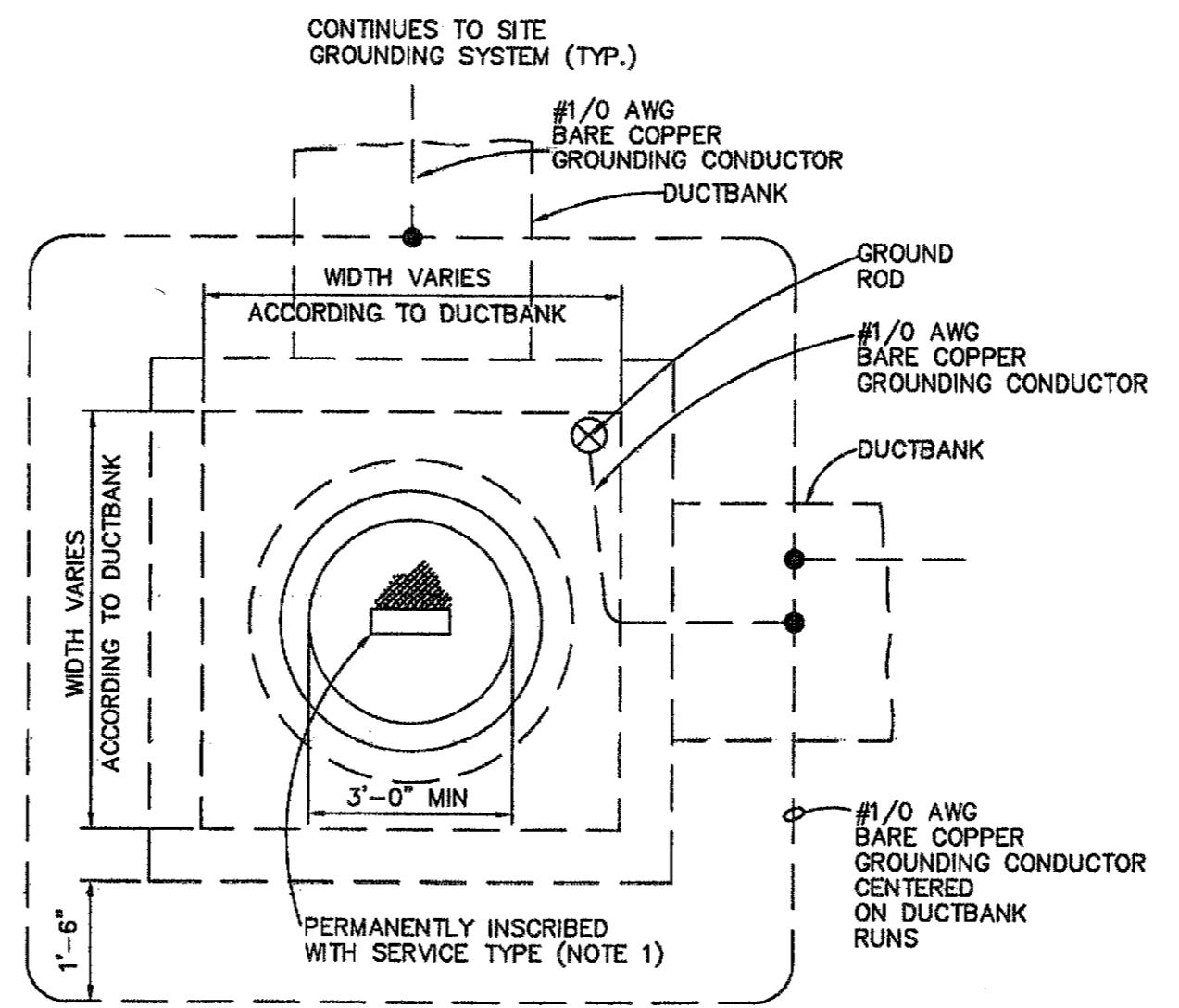
1 TYPICAL DUCTBANK CONSTRUCTION DETAIL
E-609-05 SCALE: NONE

TOTAL NO. DUCTS (CONDUITS) AND CONFIGURATION OF DUCTBANKS TO BE DETERMINED IN FIELD



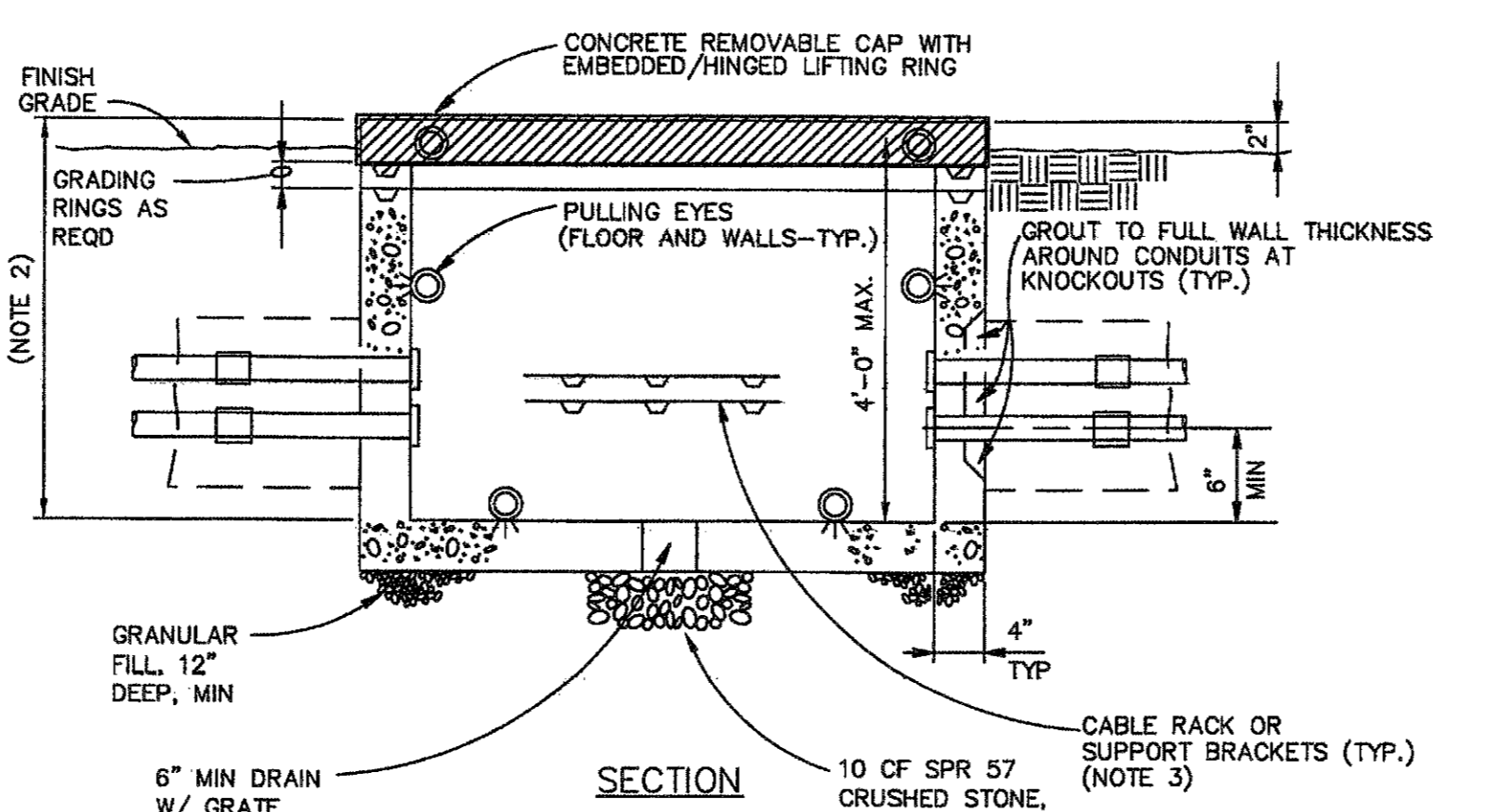
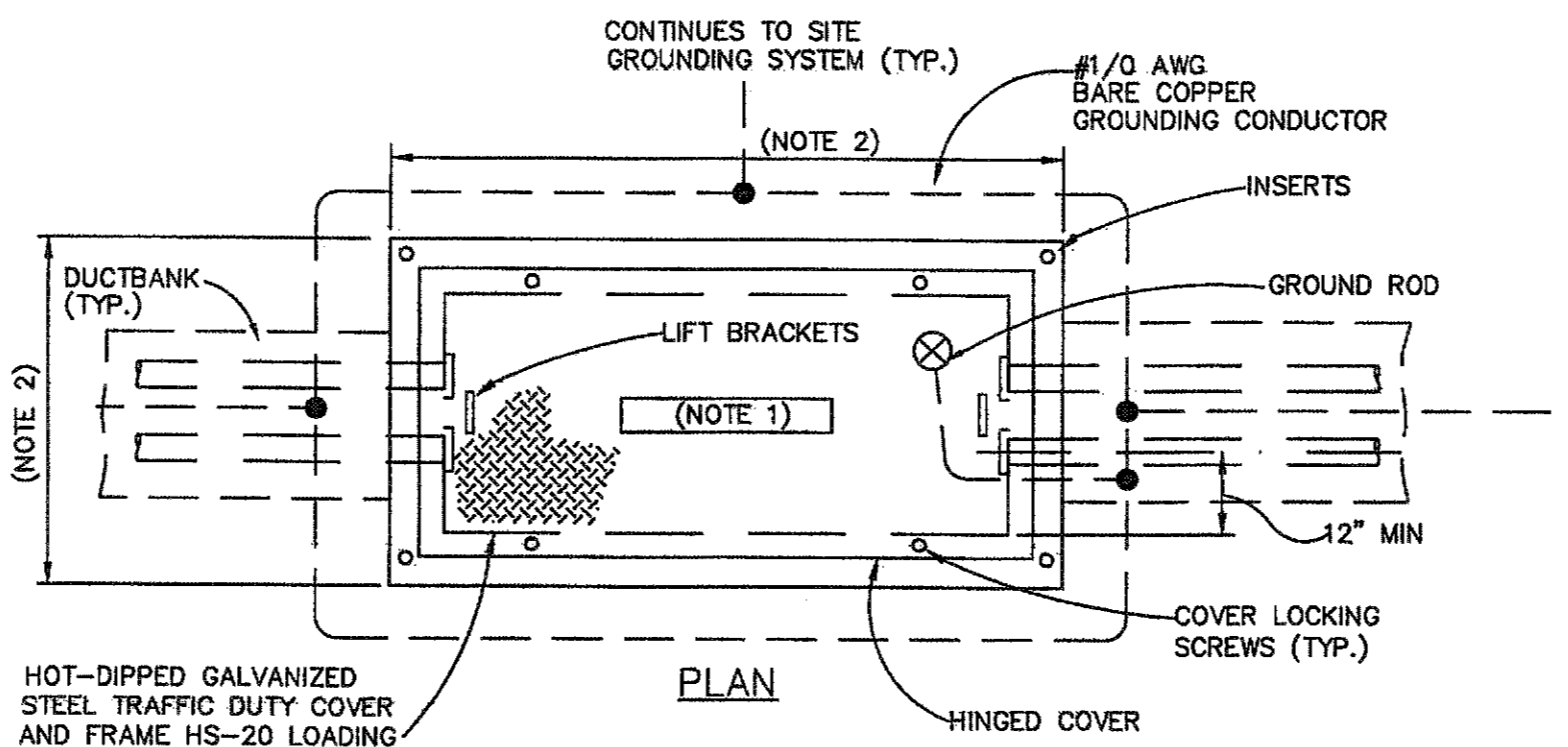
NOTE: COORDINATE ALL FINAL PAD DIMENSIONS WITH GAPCO.

4 TRANSFORMER/SWITCH PAD DETAIL
E-609-05 SCALE: NONE



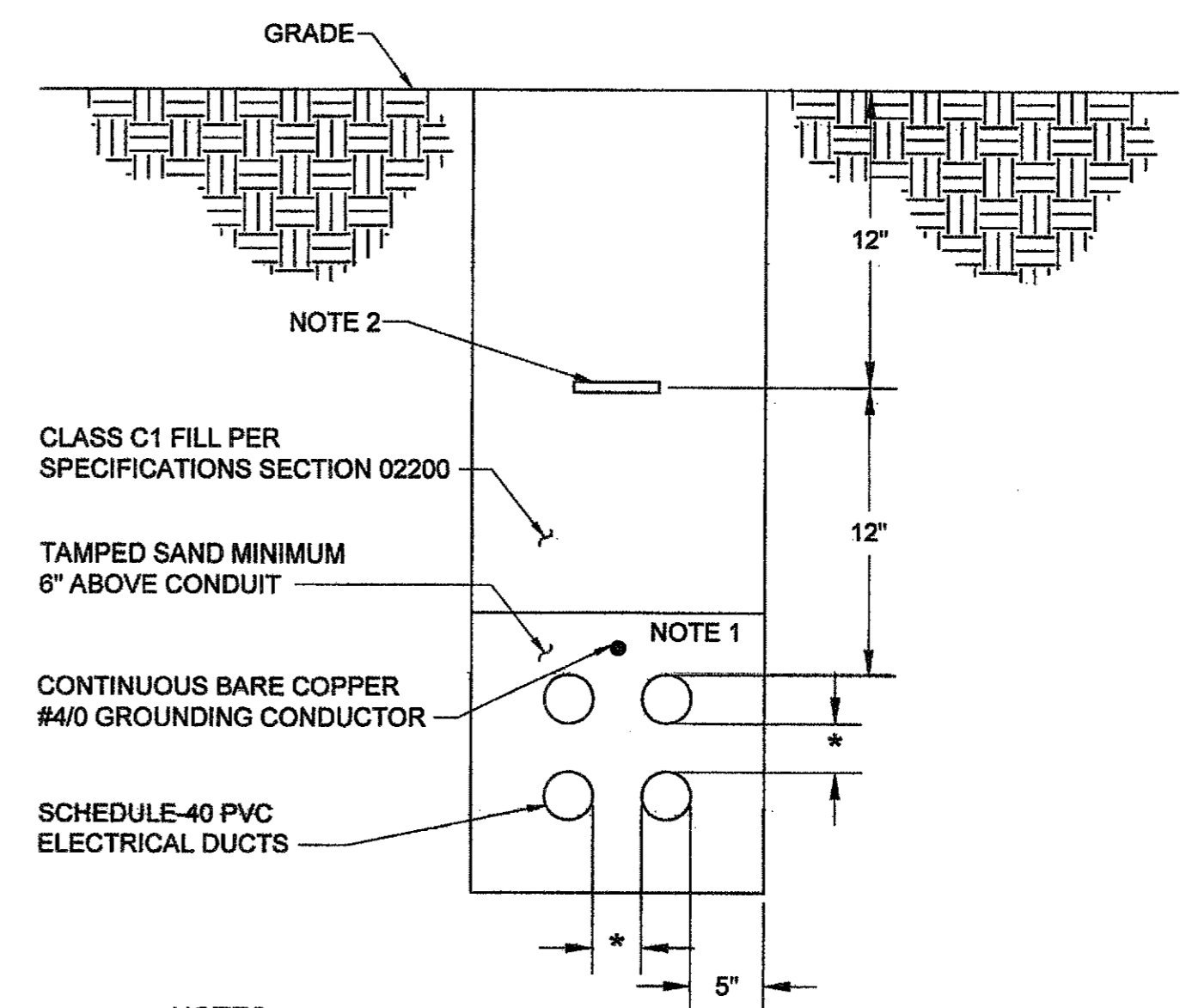
- NOTES:
1. INSCRIBE AS "COMMUNICATIONS"

2 TYPICAL COMMUNICATIONS HANDHOLE DETAIL
E-609-05 SCALE: NONE



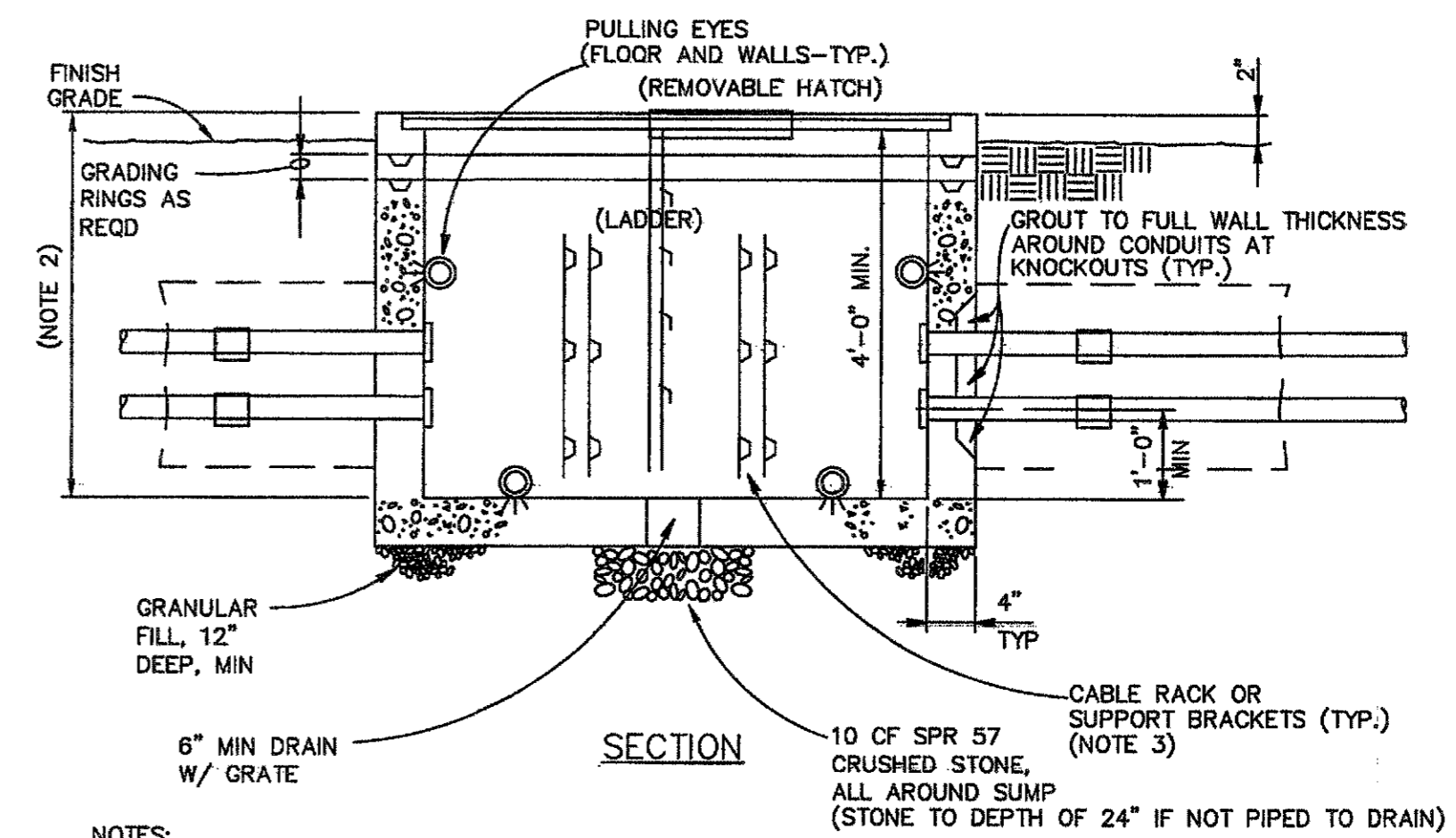
- NOTES:
1. INSCRIBE AS DESIGNATED ON ELECTRICAL SITE PLANS.
 2. SIZE AS NOTED ON ELECTRICAL SITE PLANS.
 3. TRAIL CABLES (NOT SHOWN) AGAINST WALL TO ALLOW FLOOR ACCESS.

5 TYPICAL ELECTRICAL HANDHOLE DETAIL
E-609-05 SCALE: NONE



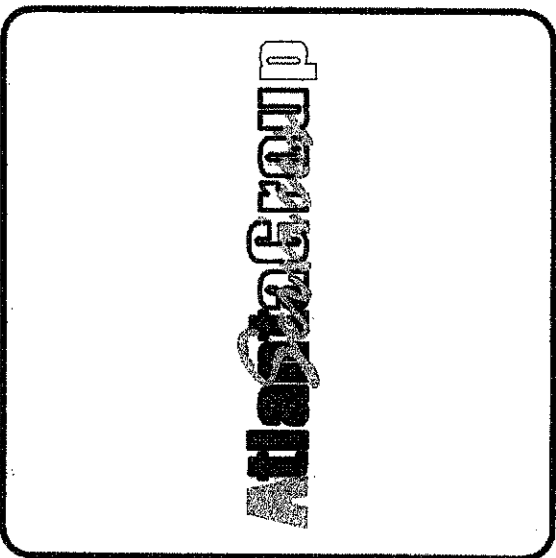
- NOTES:
1. NUMBER AND SIZE OF ELECTRICAL DIRECT BURIED RACEWAYS AS INDICATED ON DRAWINGS OR SCHEDULES.
 2. OSHA APPROVED 6" WIDE RED WARNING TAPE (IDEAL DU-601 OR EQUAL).
 3. DIMENSIONS ARE MINIMUM.
 4. BOND GROUNDING CONDUCTOR TO BUILDING GROUNDING ELECTRODES, POWER SOURCE AND LOAD ENCLOSURES.
 5. SADDLE-TYPE CONDUIT SPACERS REQUIRED EVERY 8' (CARLON SNAP-LOC, SNAP-N-STAC, OR EQUAL).
*PROVIDE 2" SEPARATION FOR CONDUITS LESS THAN 4".
*PROVIDE 3" SEPARATION FOR CONDUITS 4" AND LARGER.

3 DIRECT BURIED RACEWAYS
E-609-05 SCALE: NONE



- NOTES:
1. INSCRIBE TOP PLATE AS DESIGNATED ON ELECTRICAL SITE PLANS.
 2. SIZE AS NOTED ON ELECTRICAL SITE PLANS.
 3. TRAIL CABLES (NOT SHOWN) AGAINST WALL TO ALLOW FLOOR ACCESS.

6 TYPICAL ELECTRICAL MANHOLE DETAIL
E-609-05 SCALE: NONE



PEACHTREE CREEK SOUTH FORK
RELIEF STORAGE AND PUMPING STATION

CITY OF ATLANTA
DEPARTMENT OF WATERSHED MANAGEMENT

REV	DATE	REVISION DESCRIPTION
0	10/28/12	100 PERCENT BID PACKAGE

THIS LINE IS ONE INCH LONG WHEN PLOTTED FULL SCALE
THIS DRAWING MUST BE USED IN CONJUNCTION WITH THE APPLICABLE OR GOVERNING TECHNICAL SPECIFICATIONS AND OTHER CONTRACT DOCUMENTS.

PROJECT NO: FC-6260
DATE: OCTOBER 2012
RESP PROF: KCV DESIGNER: KCV CHECKER: WFR

SHEET TITLE
ELECTRICAL
00 - GENERAL
UNDERGROUND DETAILS