

**LIGHTING FIXTURE SCHEDULE**  
LIDDELL DRIVE (NOTE 2)

TYPE	MFR (NOTE 1)	MODEL NUMBER (NOTE 1)	MOUNTING (NOTE 5)	DESCRIPTION	LAMP TYPE / TOTAL WATTS	VOLTS	REMARKS (NOTE 4)
A	LIGHTING TECHNOLOGIES	LTB-7072-CN-X-B	CEILING / STRUCTURE	LOW BAY SERIES, 3-BRICK LED	LED 3-BRICK / 81W	277V	
AE	LIGHTING TECHNOLOGIES	LTB-7072-CN-X-B	CEILING / STRUCTURE	LOW BAY SERIES, 3-BRICK LED, WITH 1-BRICK EMERGENCY INVERTER BATTERY PACK, 2-BRICK NORMAL POWER SUPPLY	LED 3-BRICK / 81W	277V	INVERTER BATTERY - MULE LIGHTING CSC-S-20, INSTALLED BY MANUFACTURER
B	LIGHTING TECHNOLOGIES	LTBL-7048-CN-X-1	WALL	BOX LIGHT SERIES, 4-BRICK LED	LED 4-BRICK / 111W	277V	
BE	LIGHTING TECHNOLOGIES	LTBL-7048-CN-X-1	WALL	BOX LIGHT SERIES, 4-BRICK LED, WITH 1-BRICK EMERGENCY INVERTER BATTERY PACK, 3-BRICK NORMAL POWER SUPPLY	LED 4-BRICK / 111W	277V	INVERTER BATTERY - MULE LIGHTING CSC-S-20, INSTALLED BY MANUFACTURER
C	LIGHTING TECHNOLOGIES	LTBL-7028-CN-X-1	WALL	BOX LIGHT SERIES, 2-BRICK LED	LED 2-BRICK / 56W	277V	
D	LIGHTING TECHNOLOGIES	LTWP-7028-CN-X-1	WALL	WALL PACK SERIES, 2-BRICK LED	LED 2-BRICK / 56W	277V	
DE	LIGHTING TECHNOLOGIES	LTWP-7028-CN-X-1	WALL	WALL PACK SERIES, 2-BRICK LED, WITH 1-BRICK EMERGENCY INVERTER BATTERY PACK, 1-BRICK NORMAL POWER SUPPLY	LED 2-BRICK / 56W	277V	INVERTER BATTERY - MULE LIGHTING CSC-S-20, INSTALLED BY MANUFACTURER
F	LIGHTING TECHNOLOGIES	LTWC-7028-CN-X-1	WALL	CUT-OFF WALL PACK SERIES, 2-BRICK LED	LED 2-BRICK / 56W	277V	
X1	EVENLITE	TEX-EM-R-1C	UNIVERSAL	TELEVIS UNIVERSAL MOUNT EDGELET LED EXIT SIGN	LED	277V	
P1	LIGHTING TECHNOLOGIES	LTBL-7048-CN-X-1	20' POLE	BOX LIGHT SERIES, 4-BRICK LED	LED 4-BRICK / 111W	277V	SEE DWG. ED-608 FOR SITE LIGHTING POLE BASE DETAIL.
P2	LIGHTING TECHNOLOGIES	LTBL-7018-CN-X-1-12X12	10' POLE	BOX LIGHT SERIES, 1-BRICK LED	LED 1-BRICK / 14W	277V	SEE DWG. ED-608 FOR SITE LIGHTING POLE BASE DETAIL.

- GENERAL:**
- MANUFACTURERS AND MODEL NUMBERS SHOWN ARE BASIS OF DESIGN.
  - FIXTURES BY OTHER MANUFACTURERS WILL BE CONSIDERED IF SATISFACTORY PROOF OF EQUIVALENCY IS FURNISHED BY THE CONTRACTOR TO THE ENGINEER. (SEE NOTE 3 BELOW.)
  - CONTRACTOR SHALL PROVIDE A COPY OF THE PROPOSED LIGHTING FIXTURE PACKAGE FOR ENGINEER'S APPROVAL TO SUBMIT. ENGINEER'S APPROVAL OF THIS PACKAGE WILL BE CONSIDERED PRELIMINARY. FINAL APPROVAL WILL BE CONTINGENT UPON REVIEW OF FINAL SHOP DRAWINGS. ALL PROPOSED ALTERNATES MUST BE INDUSTRY STANDARD EQUAL TO THE FIXTURES SPECIFIED AS BASIS OF DESIGN; HOWEVER, IF THE FIXTURE IS NOT CONSIDERED EQUAL BY THE ENGINEER, IT SHALL BE DISAPPROVED FOR FINAL SUBMITTAL.
  - CONTRACTOR SHALL CONFIRM FIXTURE COMPATIBILITY WITH CEILING TYPE WHERE APPLICABLE, PRIOR TO ORDERING FIXTURE.
  - REFER TO INTERIORS PLANS FOR INTERIOR LIGHTING FIXTURE MOUNTING HEIGHTS.

**MECHANICAL EQUIPMENT CONNECTION SCHEDULE**

EQUIPMENT TAG	EQUIPMENT DESCRIPTION	VOLTS/Φ	HP (KW)	FLA (MCA)	CIRCUIT	CONDUIT AND CONDUCTORS	BREAKER	DISC. SWITCH (1) Frame/Fuse/Poles/Encl.
EF-301	EXHAUST FAN	480/3	3/4	(1.5)	MCC-101	SEE DWG. E3-101		30/NF/3/4X
EF-302	EXHAUST FAN	480/3	3/4	(1.5)	MCC-101	SEE DWG. E3-101		30/NF/3/4X
EF-701	EXHAUST FAN	480/3	3	(4.8)	MCC-201	SEE DWG. E7-101		30/NF/3/4X
EF-702	EXHAUST FAN	480/3	3	(4.8)	MCC-201	SEE DWG. E7-101		30/NF/3/4X
EF-703	EXHAUST FAN	120/1	(54W)	0.6	PPL-201-3	2#12 & 1#12GND IN 3/4" C	20/1	MECH. SW. IN CEILING
EF-704	EXHAUST FAN	480/3	1/2	(1.5)	MCC-201	SEE DWG. E7-101		30/NF/3/4X
EF-705	EXHAUST FAN	480/3	1/2	(1.5)	MCC-201	SEE DWG. E7-101		30/NF/3/4X
AHU-301	AIR HANDLING UNIT	480/3	(23.2)	28.8	PPH-101-1,3,5	3#8 & 1#10GND IN 3/4" C	45/3	60/45/3/1
AHU-302	AIR HANDLING UNIT	480/3	(23.2)	28.8	PPH-101-2,4,6	3#8 & 1#10GND IN 3/4" C	45/3	60/45/3/1
AHU-701	AIR HANDLING UNIT	480/3	(8.13)	9.8	PPH-201-1,3,5	3#12 & 1#12GND IN 3/4" C	20/3	30/20/3/1
AHU-702	AIR HANDLING UNIT	480/3	(8.13)	9.8	PPH-201-2,4,6	3#12 & 1#12GND IN 3/4" C	20/3	30/20/3/1
UH-301	UNIT HEATER	480/3	(4.0)	4.8	MCC-101	SEE DWG. E3-101		20/NF/3/4X
UH-701	UNIT HEATER	480/3	(10.0)	12.0	MCC-201	SEE DWG. E7-101		20/NF/3/4X
UH-702	UNIT HEATER	480/3	(10.0)	12.0	MCC-201	SEE DWG. E7-101		20/NF/3/4X
UH-703	UNIT HEATER	480/3	(10.0)	12.0	MCC-201	SEE DWG. E7-101		20/NF/3/4X
UH-704	UNIT HEATER	480/3	(10.0)	12.0	MCC-201	SEE DWG. E7-101		20/NF/3/4X

**NOTES:**

1. PROVIDE FUSES PER FINAL EQUIPMENT NAMEPLATE INFORMATION.

ID: LC101  
LOCATION: DIVERSION PUMP STATION ELECTRICAL ROOM  
SUPPLY CIRCUIT: PPL-101-10 VOLTAGE: 120V

RELAY	LINE FEED	VOLTAGE	ZONE	DESCRIPTION	NOTES
1	PPH-101-15	277V	1	ELECTRICAL ROOM	
2	PPH-101-19	277V	2	BUILDING EXTERIOR	
3	PPH-101-17	277V	3	ROOF / STAIR	
4	PPH-101-13	277V	4	PUMP ROOM	
5	PPH-101-21	277V	5	DIVERSION STRUCTURES	
6	PPH-101-23	277V	6	SITE	
7	PPH-101-25	277V	7	SPARE	
8	PPH-101-27	277V	8	SPARE	

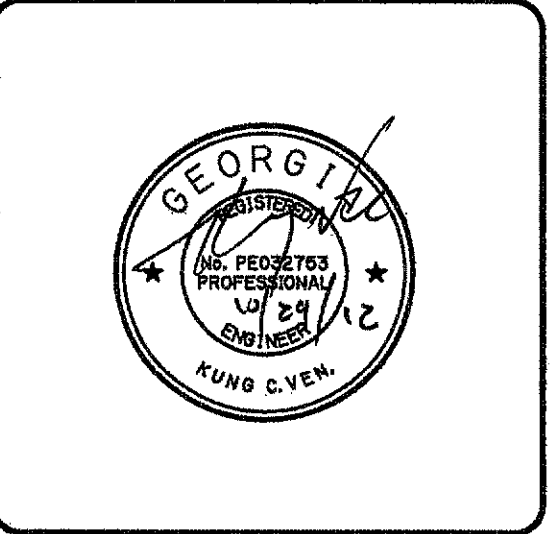
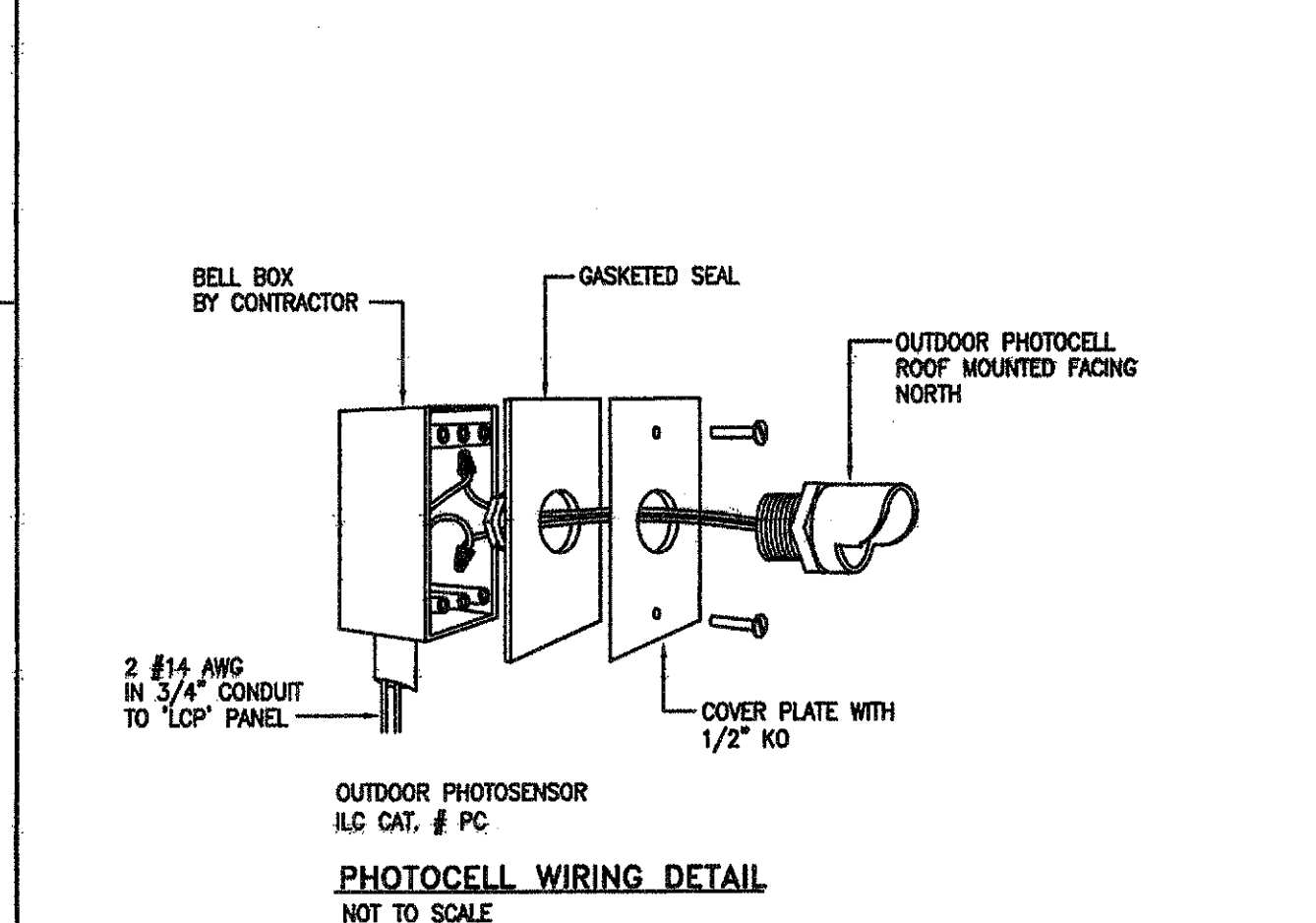
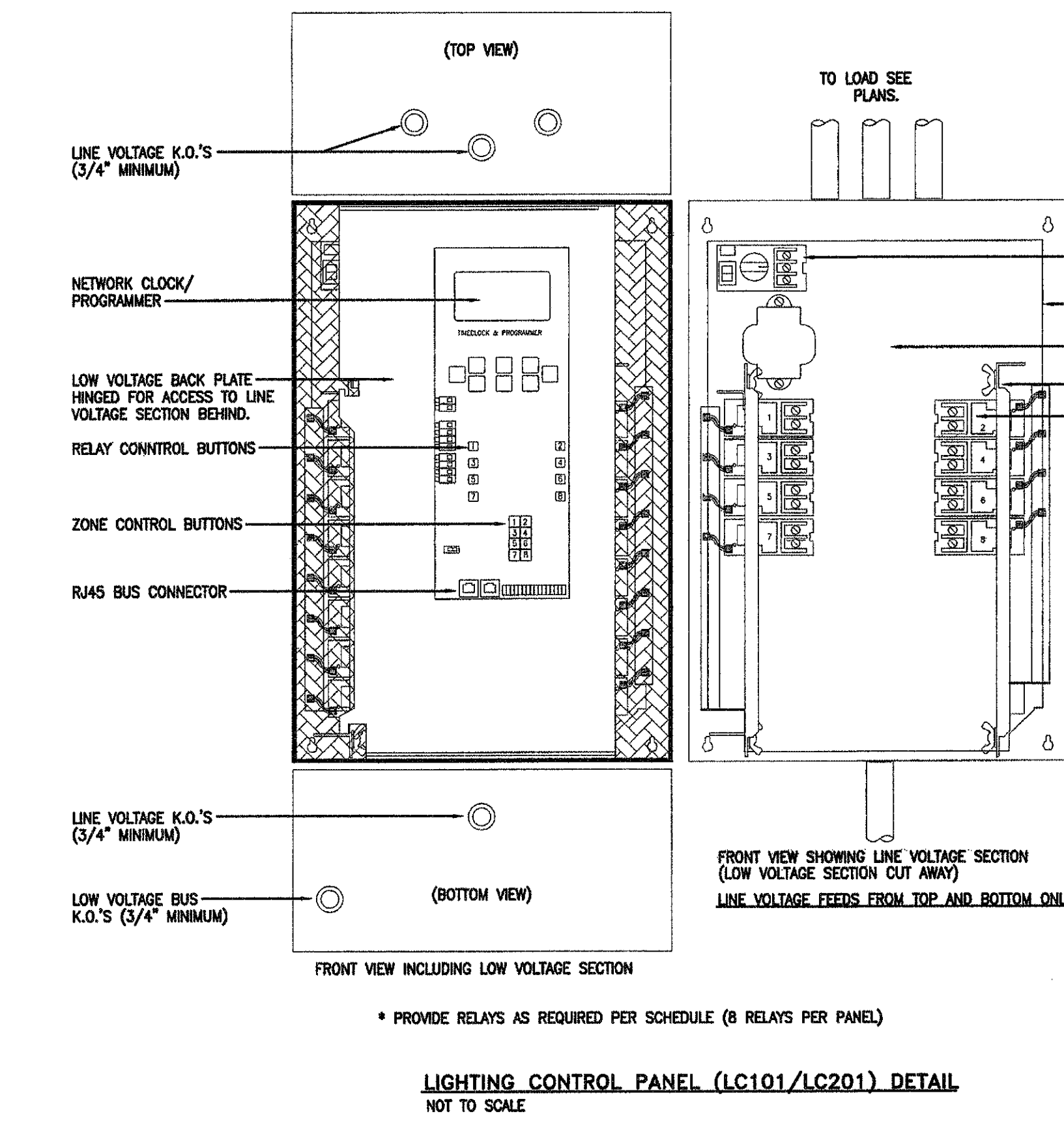
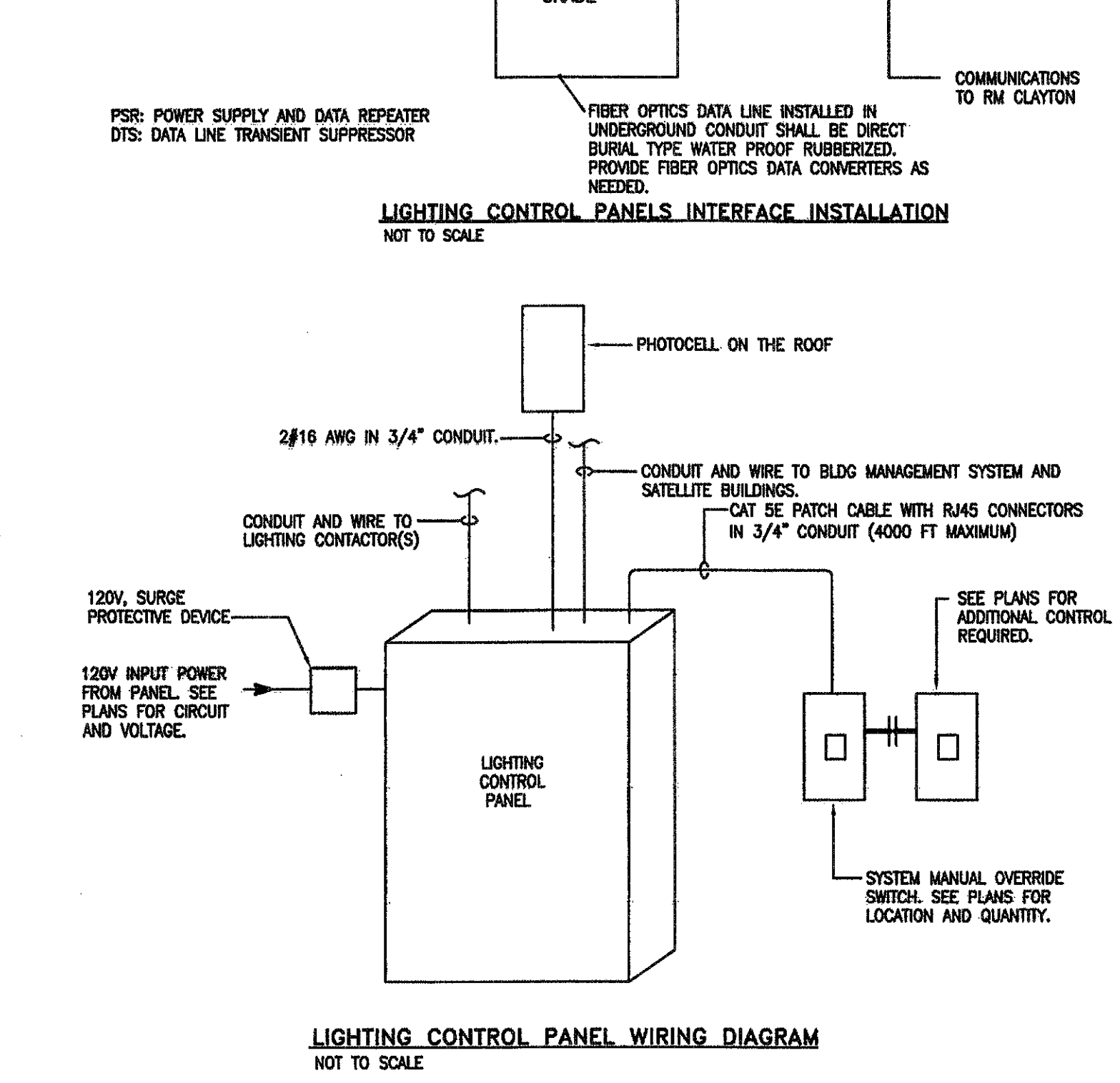
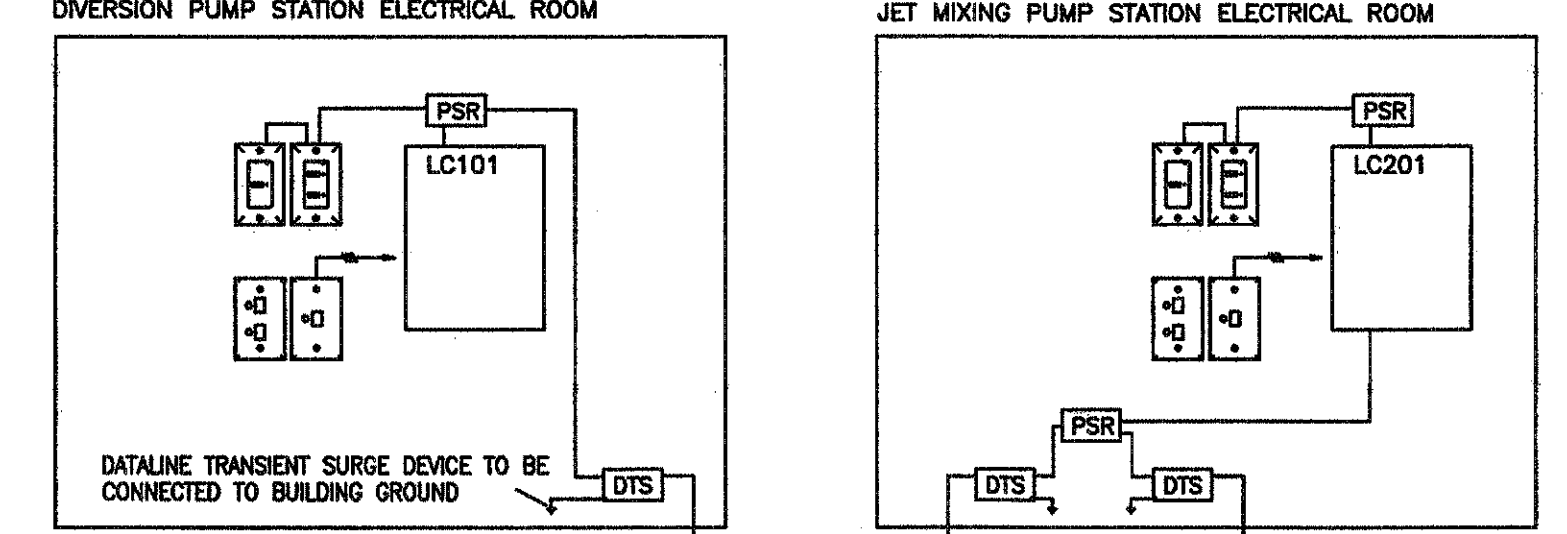
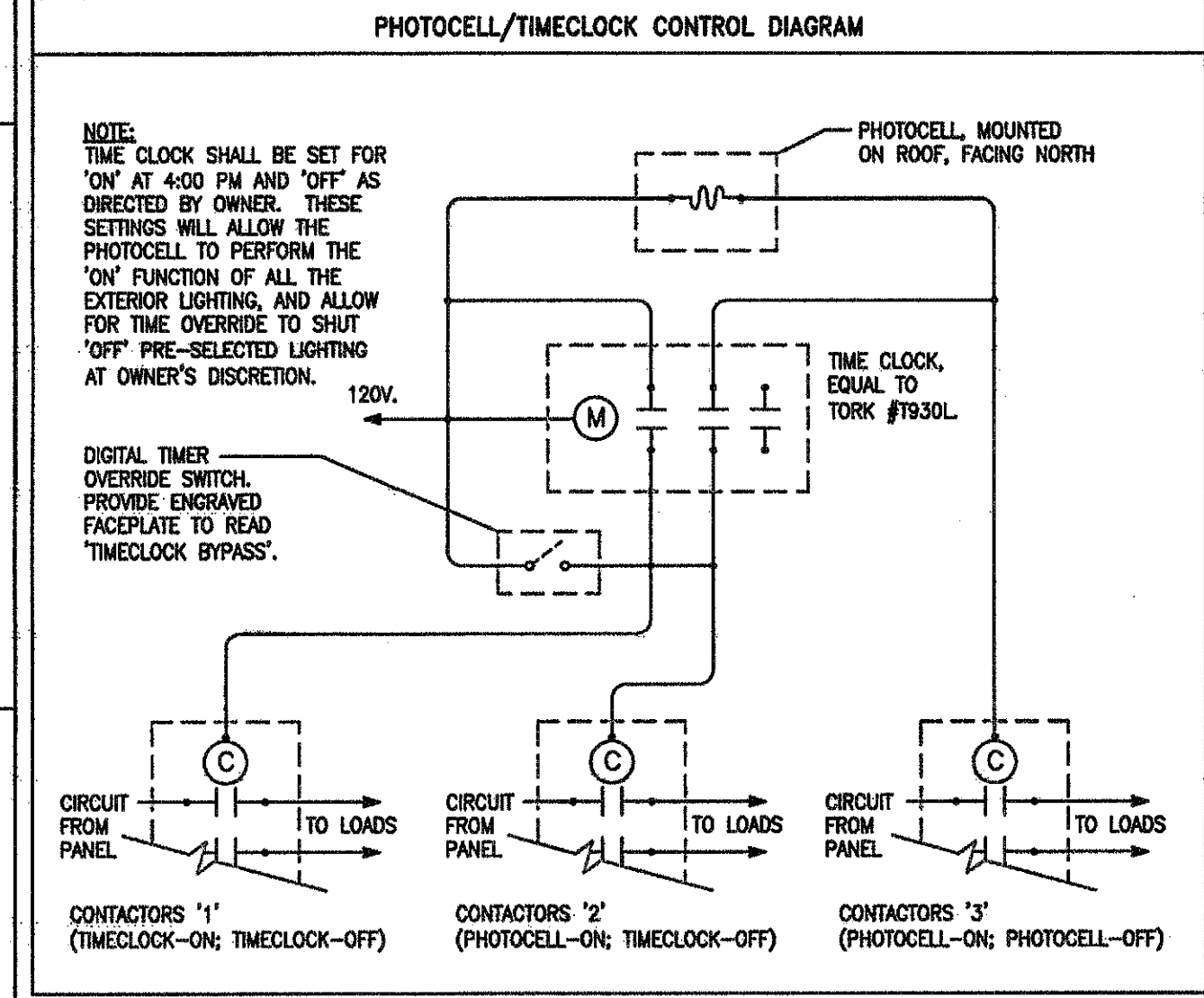
ID: LC201  
LOCATION: JET MIXING PUMP STATION ELECTRICAL ROOM  
SUPPLY CIRCUIT: PPL-201-10 VOLTAGE: 120V

RELAY	LINE FEED	VOLTAGE	ZONE	DESCRIPTION	NOTES
1	PPH-201-27	277V	1	ELECTRICAL ROOM	
2	PPH-201-33	277V	2	BUILDING EXTERIOR	
3	PPH-201-31	277V	3	ROOF / STAIR	
4	PPH-201-25	277V	4	PUMP ROOM BASE LEVEL	
5	PPH-201-29	277V	5	PUMP ROOM UPPER LEVEL	
6	PPH-201-37	277V	6	SITE	
7	PPH-201-35	277V	7	EQUALIZATION TANK	
8	PPH-201-35	277V	8	SPARE	

- GENERAL NOTES (APPLY TO BOTH LIGHTING CONTROL PANELS)**
- PROVIDE NECESSARY SEPARATION PER NEC BETWEEN UNLIKE VOLTAGES
  - PROVIDE ELECTRICALLY HELD RELAYS.
  - COIL VOLTAGE SHALL BE 120VAC.
  - CONTRACTOR SHALL PROGRAM THE LIGHTING CONTROL PANELS PER OWNER REQUIREMENTS INCLUDING TIME CLOCK CONTROL.
  - PROVIDE PHOTOCELLS TO CONTROL EXTERIOR LIGHTS.
- DO NOT CONTROL ANY EXIT SIGNS, EMERGENCY LIGHTS, NIGHT LIGHTS, OR EMERGENCY BATTERY BALLASTS FROM THE LIGHTING CONTROL SYSTEM. WHEN THESE ITEMS ARE SHOWN CONNECTED TO A CONTROLLED CIRCUIT, PROVIDE AN UNSWITCHED CONDUCTOR CONNECTED AT THE LINE SIDE OF THE CONTRACTOR TO SERVE THEM.**

- GENERAL NOTES:**
- LIGHTING CONTROL SYSTEM SHALL BE DIGITAL AND CONSIST OF A MASTER LIGHTING CONTROL PANEL, DIGITAL TIME CLOCK, PHOTOCELL, MANUAL OVERRIDE SWITCH AND OTHER CONTROLS AS SHOWN ON THE DRAWINGS. SYSTEM CAN BE WIRED IN A DAISY-CHAIN.
  - RELAY PANELS SHALL BE PRE-WIRED, PRE-ASSEMBLED, PRE-PROGRAMMED AND LISTED TO UL 916 (NORMAL) OR ETL LISTED TO UL924 (EMERGENCY). PANELS SHALL BE PROVIDED WITH DUAL VOLTAGE POWER SUPPLY AND 16 GAUGE BARRIERS TO SEPARATE HIGH AND LOW VOLTAGE, NORMAL AND EMERGENCY POWER.
  - STANDARD RELAYS SHALL HAVE NORMALLY CLOSED (NC) CONTACTS RATED FOR 120/277V 20A TUNGSTEN, BALLAST OR HID.
  - NOT USED.
  - RELAY PANEL ELECTRONICS SHALL PROVIDE CURRENT VISUAL STATUS AND CONTROL OF EACH RELAY OR ZONE. ALL SYSTEM CONTROL ELECTRONICS SHALL STORE PROGRAMMING IN A NON-VOLATILE MEMORY AND PROVIDE 10 YEAR BATTERY BACKUP FOR TIME OF DAY.
  - ALL SWITCHES SHALL COMMUNICATE VIA RS-485, CAT 5 PATCH CABLE WITH RJ45 CONNECTORS. CONTACT CLOSURE STYLE SWITCHES ARE NOT ACCEPTABLE. ANY SWITCH BUTTON FUNCTION SHALL BE ABLE TO BE CHANGED LOCALLY AT THE CONTROLLER.
  - PHOTOCELL, EXTERIOR (PCO) OR INTERIOR (PC), SHALL PROVIDE READOUT ON THE CONTROLLER SCREEN IN NUMBER VALUES ANALOGOUS TO FOOT-CANDLES. EACH PHOTOCELL SHALL PROVIDE A MINIMUM OF 16 SET POINTS. EACH SET POINT CAN BE PROGRAMMED TO CONTROL ANY RELAY OR ZONE. EACH SET POINT SHALL BE SET THROUGH THE CONTROLLER. PHOTOCELLS THAT REQUIRE THE USE OF SET SCREWS OR MANUAL ADJUSTMENTS AT THE PHOTOCELL CONTROL CARD ARE NOT ACCEPTABLE.
  - SHOP DRAWINGS: SUBMIT DIMENSIONED DRAWINGS OF LIGHTING CONTROL SYSTEM AND ACCESSORIES INCLUDING, BUT NOT NECESSARILY LIMITED TO, RELAY PANELS, SWITCHES, DIGITAL T/C, PHOTOCELLS AND OTHER INTERFACES.
  - PROVIDE FACTORY TECHNICIAN ON-SITE PROGRAMMING AND OWNER TRAINING ON THE SYSTEM.

- SYSTEM PERFORMANCE:**
- RELAYS IN LIGHTING CONTROL PANEL SHALL CONTROL LOAD DIRECTLY AS SHOWN ON PANEL SCHEDULES OR SHALL CONTROL CONTACTOR COILS AS SHOWN ON THIS SHEET.
  - EXTERIOR LIGHTING SHALL BE CONTROLLED VIA PHOTOCELL 'ON', PHOTOCELL 'OFF' OR PHOTOCELL 'ON', TIMECLOCK 'OFF', AS INDICATED IN THE LIGHTING CONTACTOR SCHEDULE ON THIS SHEET.
  - ALL INTERIOR LIGHTING CONTROLS, VIA RELAYS AND/OR VIA RELAYS CONTROLLING CONTACTOR COILS, SHALL BE SET TO TURN 'OFF' THE LIGHTING ONE HOUR AFTER BUSINESS CLOSING AS DETERMINED BY OWNER. AT THIRTY (30) MINUTES PRIOR TO SET TIME THE LIGHTS SHALL BLINK FIVE (5) TIMES, AND AT FIFTEEN (15) MINUTES PRIOR TO SET TIME THE LIGHTS SHALL BLINK THREE (3) TIMES TO ALERT OCCUPANTS THAT THE LIGHTS ARE ABOUT TO BE TURNED OFF.
  - MANUAL OVERRIDE SWITCH SHALL BE LOCATED AS SHOWN ON THE DRAWING WITH AN ENGRAVED LABEL STATING 'LIGHTING MANUAL OVERRIDE SWITCH'. RE-VIFY EXACT LOCATION WITH OWNER ON-SITE PRIOR TO ROUGH-IN. THE SWITCH SHALL BE PROGRAMMED TO OVERRIDE THE PRESET TO 'OFF' TIME FOR TWO (2) HOUR INTERVALS.
  - PROVIDE (2) COPIES OF A LAMINATED ONE-PAGE OPERATION INSTRUCTION, WRITTEN IN A USER FRIENDLY, EASY TO READ FORMAT FOR OWNER'S USE.
  - WHEN RELAYS ARE CONTROLLING ELECTRICALLY-HELD CONTACTORS, THEN THE RATIO OF RELAYS TO CONTACTOR COILS IS 1-1. WHEN RELAYS ARE CONTROLLING MECHANICALLY-HELD CONTACTORS, THEN THE RATIO IS 2-1. (2) RELAYS PER COIL. IN THIS CASE THE RELAYS SHALL BE PROGRAMMED AS A MOMENTARY DEVICE WITH TIME SET PER CONTACTOR MANUFACTURER RECOMMENDATION.
- BASIS OF DESIGN IS WITH USE OF ELECTRICALLY-HELD CONTACTOR COILS.



PEACHTREE CREEK SOUTH FORK RELIEF STORAGE AND PUMPING STATION

DEPARTMENT of WATERSHED MANAGEMENT

CITY OF ATLANTA

REV	DATE	REVISION DESCRIPTION
0	10/28/12	100 PERCENT BID PACKAGE

THIS LINE IS ONE INCH LONG WHEN PLOTTED FULL SCALE

THIS DRAWING MUST BE USED IN CONJUNCTION WITH THE APPLICABLE OR GOVERNING TECHNICAL SPECIFICATIONS AND OTHER CONTRACT DOCUMENTS.

PROJECT NO: FC-6260  
DATE: OCTOBER 2012

RESP PROF: KCV  
DESIGNER: AWP  
CHECKER: WFR

SHEET TITLE  
ELECTRICAL  
00 - GENERAL  
LIGHTING SCHEDULES  
AND DETAILS

SHEET NO. E0-601 REV. 0