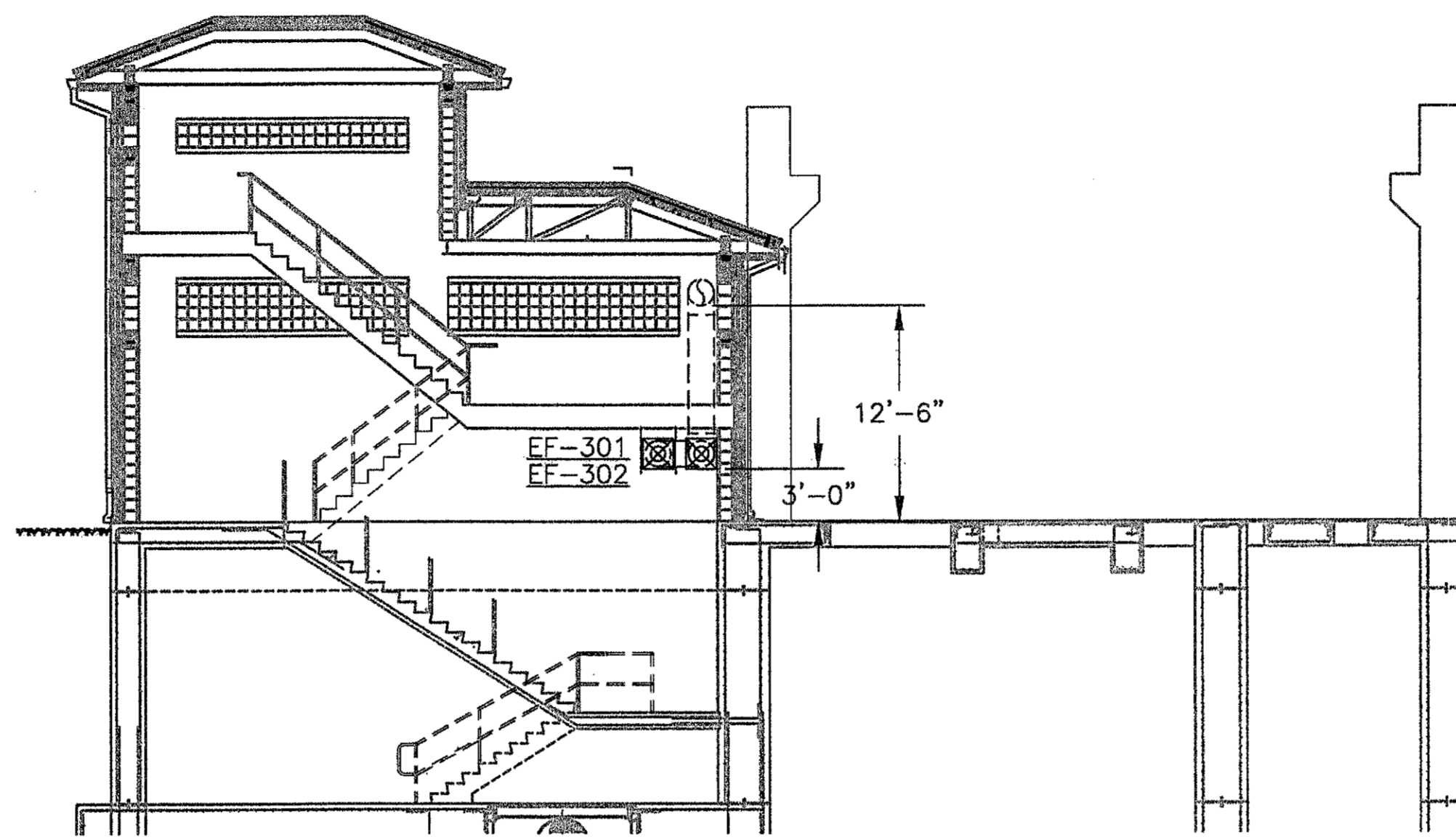


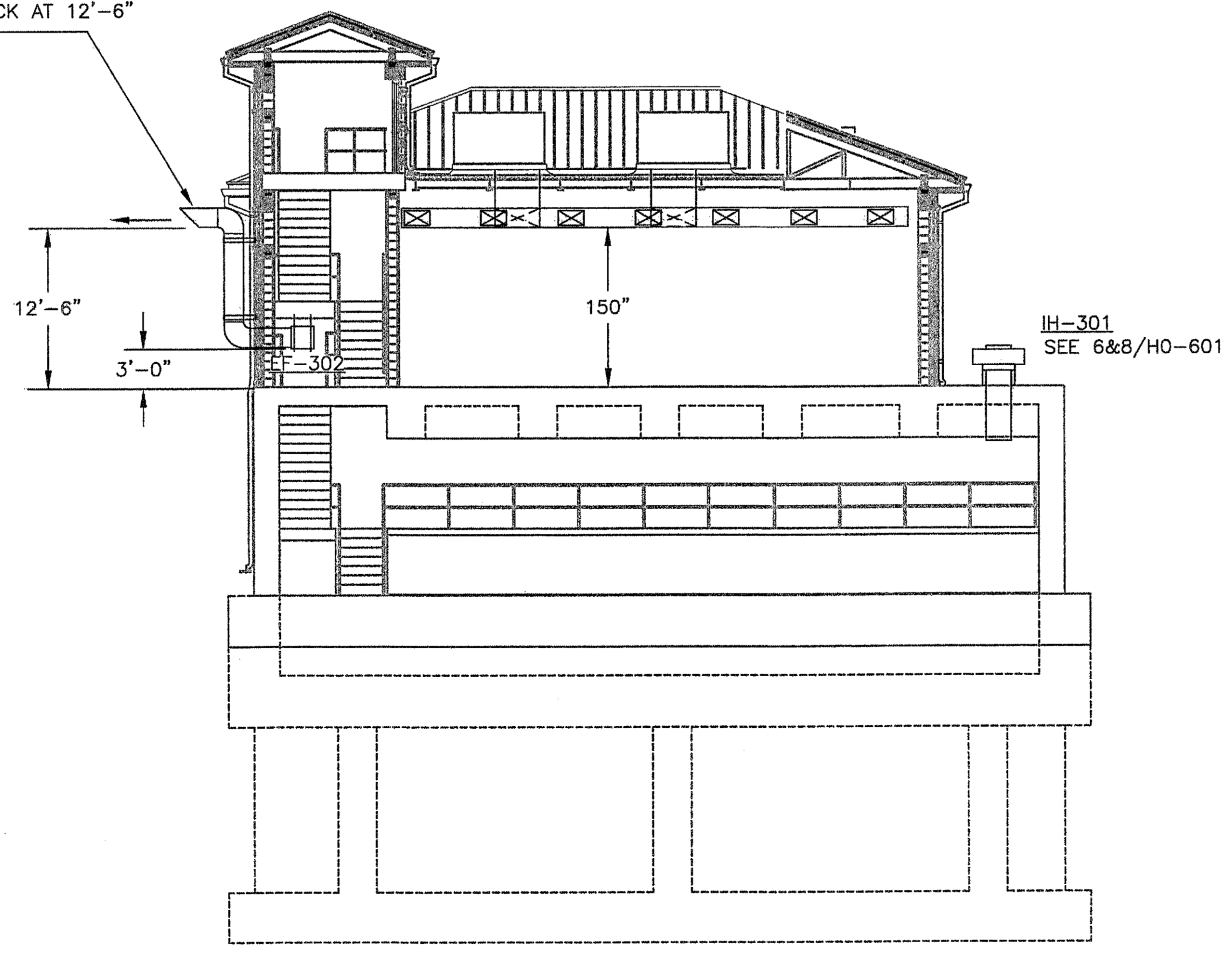
1 2 3 4 5 6 7 8

F
E
D
C
B
A



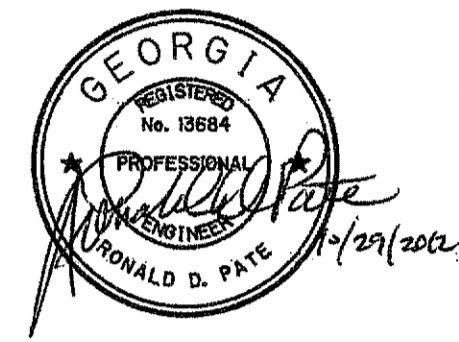
1 DIVERSION PUMP STATION - LOOKING EAST
H3-301 SCALE: 3/16"=1'-0"

18"Ø STAINLESS STEEL DUCT FROM EXHAUST FANS SHALL BE ROUTED UP THE OUTSIDE OF THE BUILDING AND TERMINATE WITH THE BOTTOM OF STACK AT 12'-6" AFG



2 DIVERSION PUMP STATION - LOOKING SOUTH
H3-301 SCALE: 3/16"=1'-0"
NOTE: FOR CLARITY RETURN DUCTWORK NOT SHOWN

AutoCAD



PEACHTREE CREEK SOUTH FORK RELIEF STORAGE AND PUMPING STATION



CITY OF ATLANTA DEPARTMENT of WATERSHED MANAGEMENT

REV	DATE	DESCRIPTION
0	10/28/12	100 PERCENT BID PACKAGE

THIS LINE IS ONE INCH LONG WHEN PLOTTED FULL SCALE
THIS DRAWING MUST BE USED IN CONJUNCTION WITH THE APPLICABLE OR GOVERNING TECHNICAL SPECIFICATIONS AND OTHER CONTRACT DOCUMENTS.

PROJECT NO: FC-6260
DATE: OCTOBER 2012
RESP PROF: RP DESIGNER: DC CHECKER: JST

SHEET TITLE
HVAC
03 - DIVERSION FACILITY PUMP STATION
BUILDING SECTIONS

SHEET NO. H3-301 REV. 0