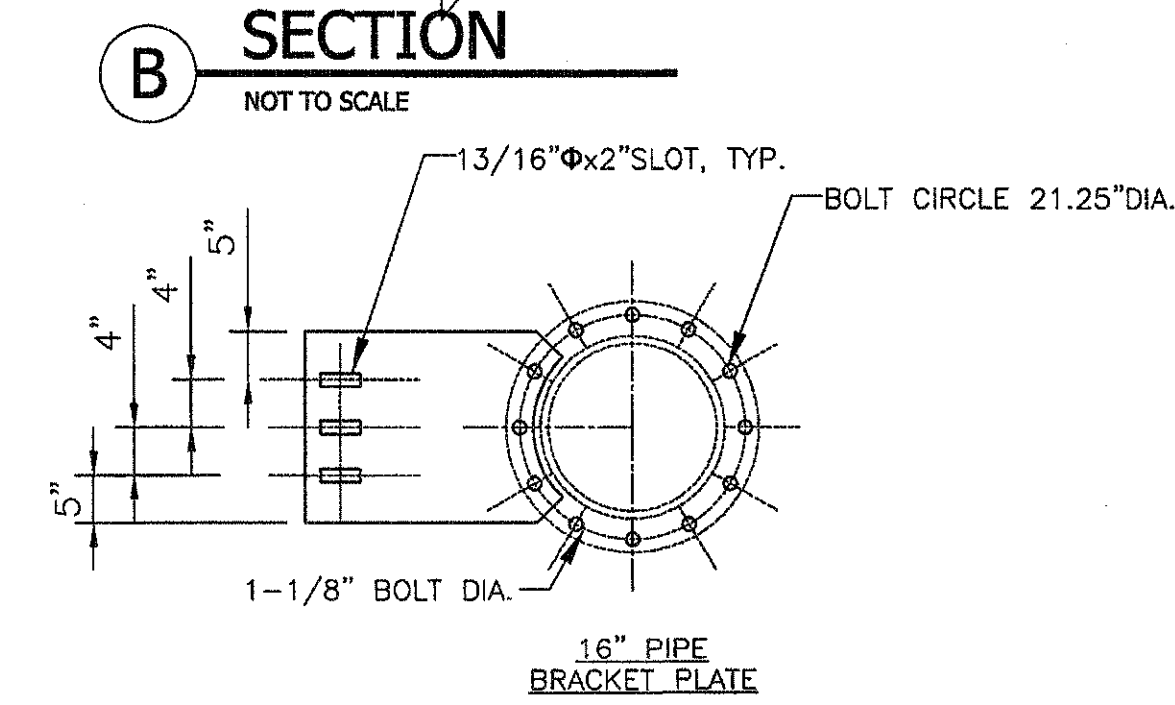
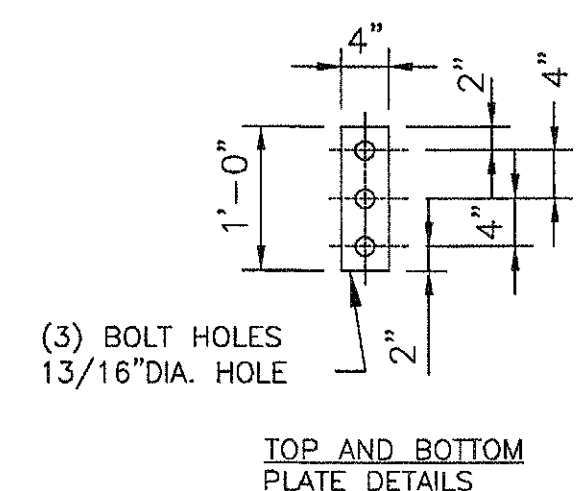
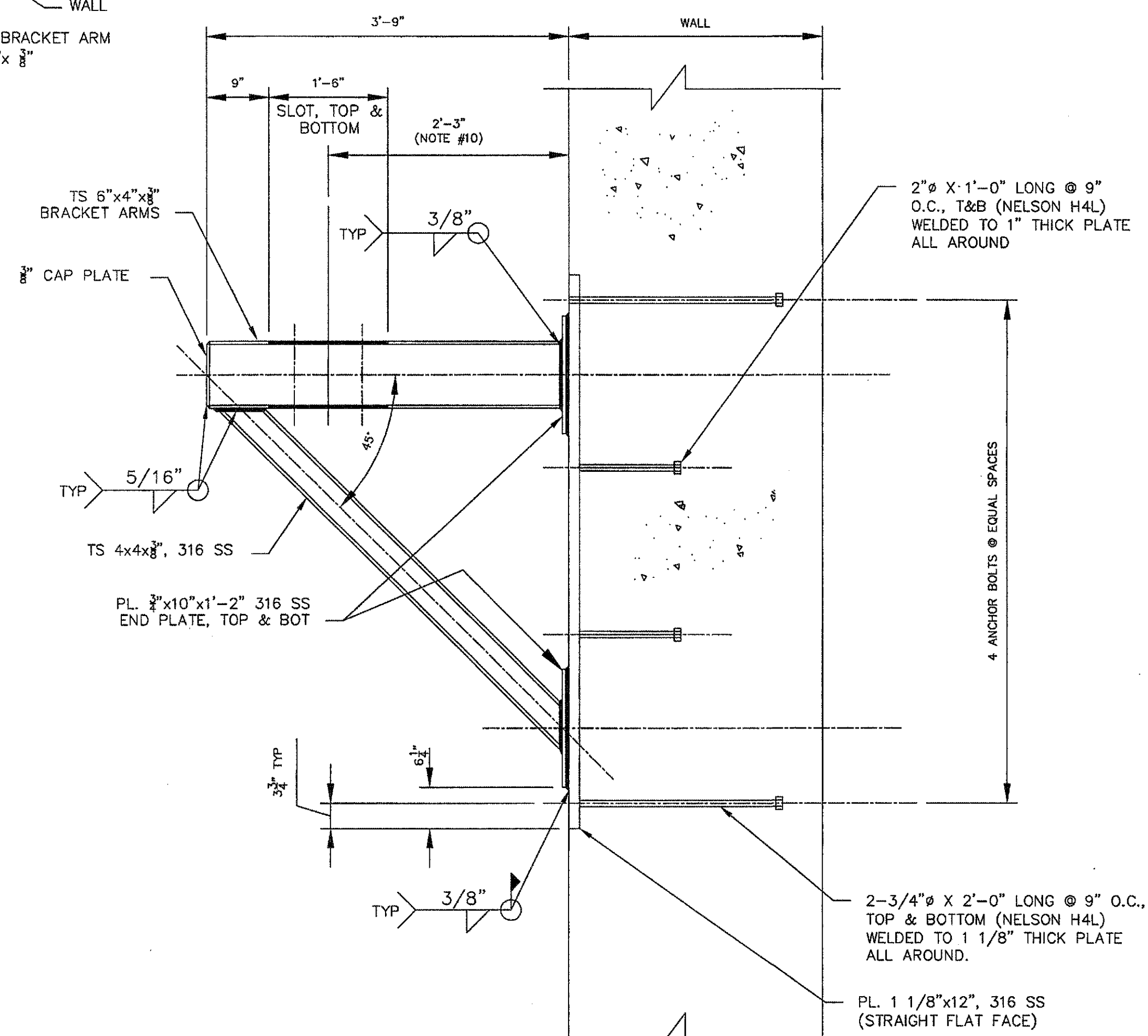
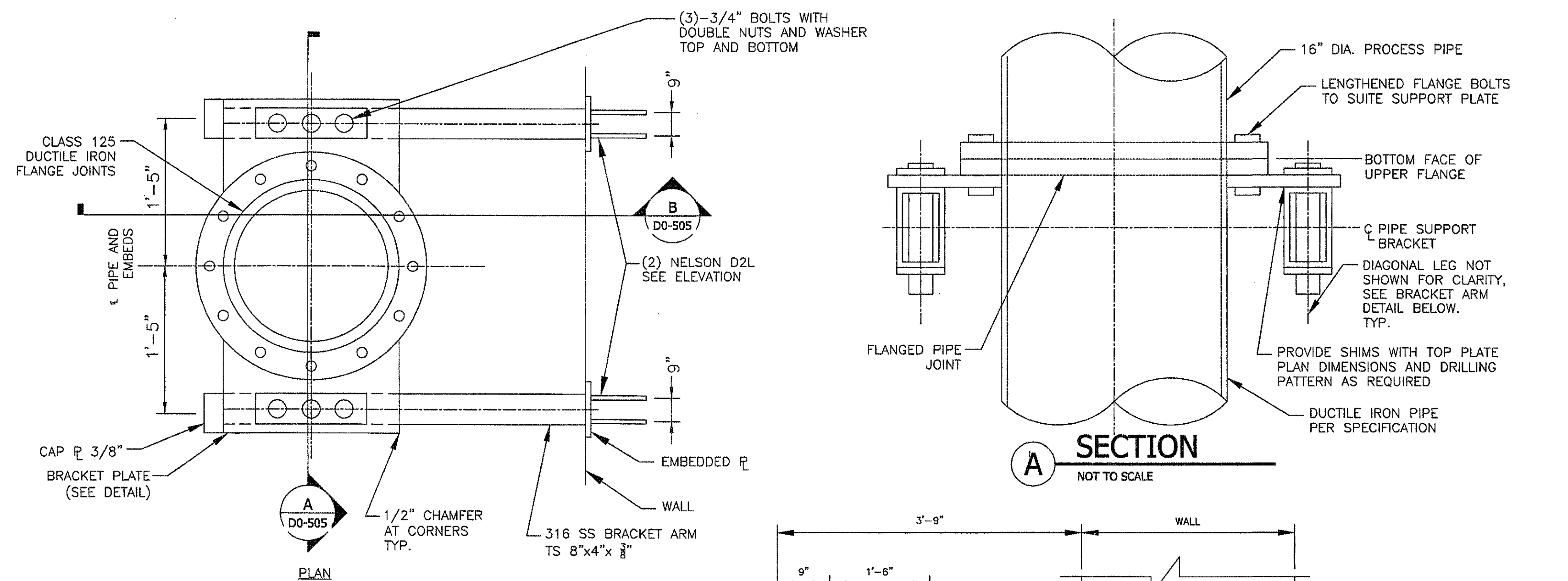
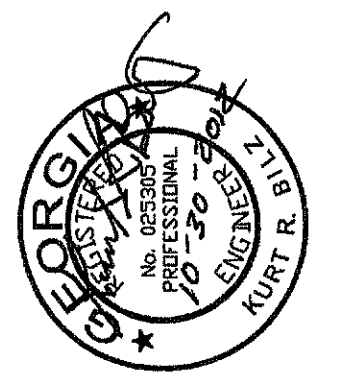


F  
E  
D  
C  
B  
A



- PIPE SUPPORT BRACKET NOTES:**
1. PROPOSED PIPE SUPPORT DETAIL SHALL BE EVALUATED BY THE CONTRACTOR WHO SHALL BE RESPONSIBLE FOR THE FINAL DESIGN OF THE SUPPORT IN ACCORDANCE WITH THE REQUIREMENTS OF SPECIFICATION SECTION 15060.
  2. VERTICAL SPACING OF SUPPORT BRACKETS SHALL BE AS SHOWN ON THE PROCESS DRAWINGS.
  3. TUBE STEEL SHALL BE TYPE 316 STAINLESS STEEL PER ASTM A554, WELD ELECTRODES SHALL BE E308.
  4. PROVIDE 3/8" DIA WEEP HOLES ON BOTTOM SIDE OF TUBES.
  5. PLATES SHALL BE ASTM A420 TYPE 316 STAINLESS STEEL WITH ASTM A320 CLASS 2-BBM HARDWARE (F=110KSI). ACCEPTABLE ALTERNATE ASTM A320 CLASS 2 BBM STUDS W/TWO NUTS AND ONE LOCK WASHER.
  6. ENGINEER SHALL VERIFY WELDERS CERTIFICATES AND APPROVE ELECTRODES PRIOR TO WELDING.
  7. PROVIDE 3/8" FILLET WELD (OVERBUILD) TOP AND BOTTOM OF TUBES.
  8. NOT USED
  9. PIPE CLAMPS, ANCHORS, SHIELDS, PLATES, NUTS, LOCKWASHER AND ANY OTHER COMPONENTS TO BE TYPE 316 STAINLESS STEEL.
  10. FIELD VERIFY CENTERLINE LOCATION.

1 PIPE SUPPORT (BRACKET) DETAIL  
D0-505 SCALE: NTS



PEACHTREE CREEK SOUTH FORK  
RELIEF STORAGE AND PUMPING STATION

CITY OF ATLANTA

DEPARTMENT of WATERSHED MANAGEMENT

REV	DATE	REVISION DESCRIPTION
0	10/28/12	100 PERCENT BID PACKAGE

THIS LINE IS ONE INCH LONG WHEN PLOTTED FULL SCALE

THIS DRAWING MUST BE USED IN CONJUNCTION WITH THE APPLICABLE OR GOVERNING TECHNICAL SPECIFICATIONS AND OTHER CONTRACT DOCUMENTS.

PROJECT NO: FC-6260

DATE: OCTOBER 2012

RESP PROF: KB DESIGNER: PS CHECKER: VK

SHEET TITLE

PROCESS  
00 - GENERAL  
DETAILS

SHEET NO. D0-505 REV. 0