

1 2 3 4 5 6 7 8

F

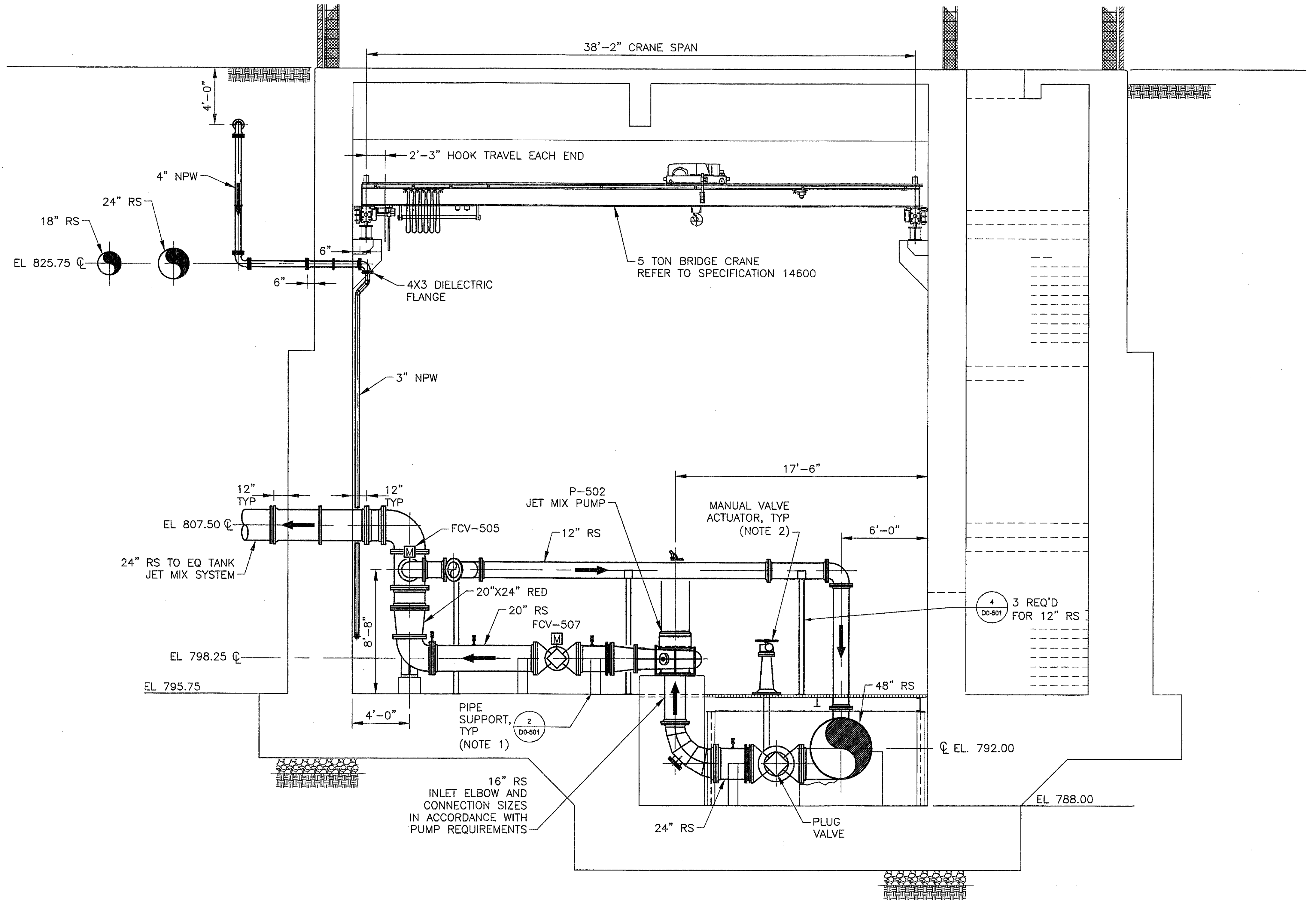
E

D

C

B

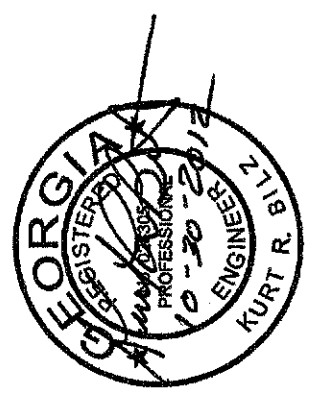
A



**B SECTION B**  
D7-302 SCALE: 1/4" = 1'-0"

- NOTES:**
- REFER TO SPECIFICATION 15060 FOR PIPE SUPPORT REQUIREMENTS.
  - PROVIDE FLOOR STAND, COUPLING, EXTENSION ROD, HANDWHEEL AND POSITION INDICATOR FOR PLUG VALVES BELOW GRATING.

4' 2' 0 4'  
SCALE: 1/4" = 1'-0"



PEACHTREE CREEK SOUTH FORK  
RELIEF STORAGE AND PUMPING STATION



CITY OF ATLANTA  
DEPARTMENT OF WATERSHED MANAGEMENT

REV	DATE	REVISION DESCRIPTION
0	10/28/12	100 PERCENT BID PACKAGE
1		
2		
3		
4		

THIS LINE IS ONE INCH LONG WHEN PLOTTED FULL SCALE.  
THIS DRAWING MUST BE USED IN CONJUNCTION WITH THE APPLICABLE OR GOVERNING TECHNICAL SPECIFICATIONS AND OTHER CONTRACT DOCUMENTS.

PROJECT NO: FC-6260  
DATE: OCTOBER 2012  
RESP PROF: KB DESIGNER: PS CHECKER: VK

SHEET TITLE  
PROCESS  
07 - JET MIX PUMP STATION  
SECTION B

SHEET NO. D7-302 REV. 0