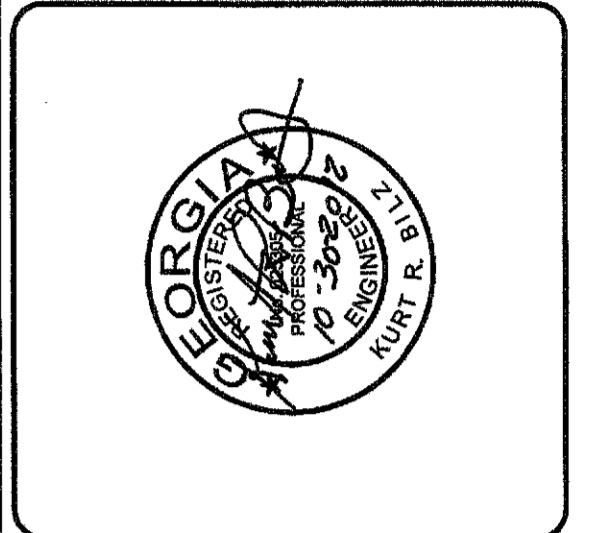
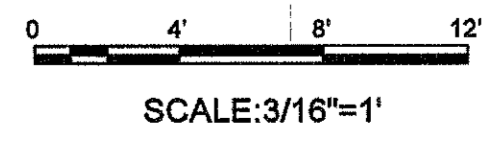


1 **BASE PLAN**
 D3-101 SCALE: 3/16" = 1'-0"

48" RS FROM DIVERSION
 STRUCTURE DS-102
 REFER TO CU-101 FOR
 CONTINUATION

48" RS FROM DIVERSION
 STRUCTURE DS-101
 REFER TO CU-101 FOR CONTINUATION



PEACHTREE CREEK SOUTH FORK
 RELIEF STORAGE AND PUMPING STATION

CITY OF ATLANTA
 DEPARTMENT OF WATERSHED MANAGEMENT

REV	DATE	REVISION DESCRIPTION

THIS LINE IS ONE INCH LONG WHEN PLOTTED FULL SCALE

THIS DRAWING MUST BE USED IN CONJUNCTION WITH THE APPLICABLE OR GOVERNING TECHNICAL SPECIFICATIONS AND OTHER CONTRACT DOCUMENTS.

PROJECT NO: FC-6260

DATE: OCTOBER 2012

RESP PROF: KB DESIGNER: PS CHECKER: VK

SHEET TITLE: PROCESS 03 - DIVERSION FACILITY PUMP STATION BASE PLAN

SHEET NO. D3-101 REV.