

F

E

D

C

B

A

ABBREVIATIONS

Table with 3 columns of abbreviations and their corresponding full names, including terms like ANCHOR BOLT, ACQUASTICAL TILE, AIR CONDUCTIONER, etc.

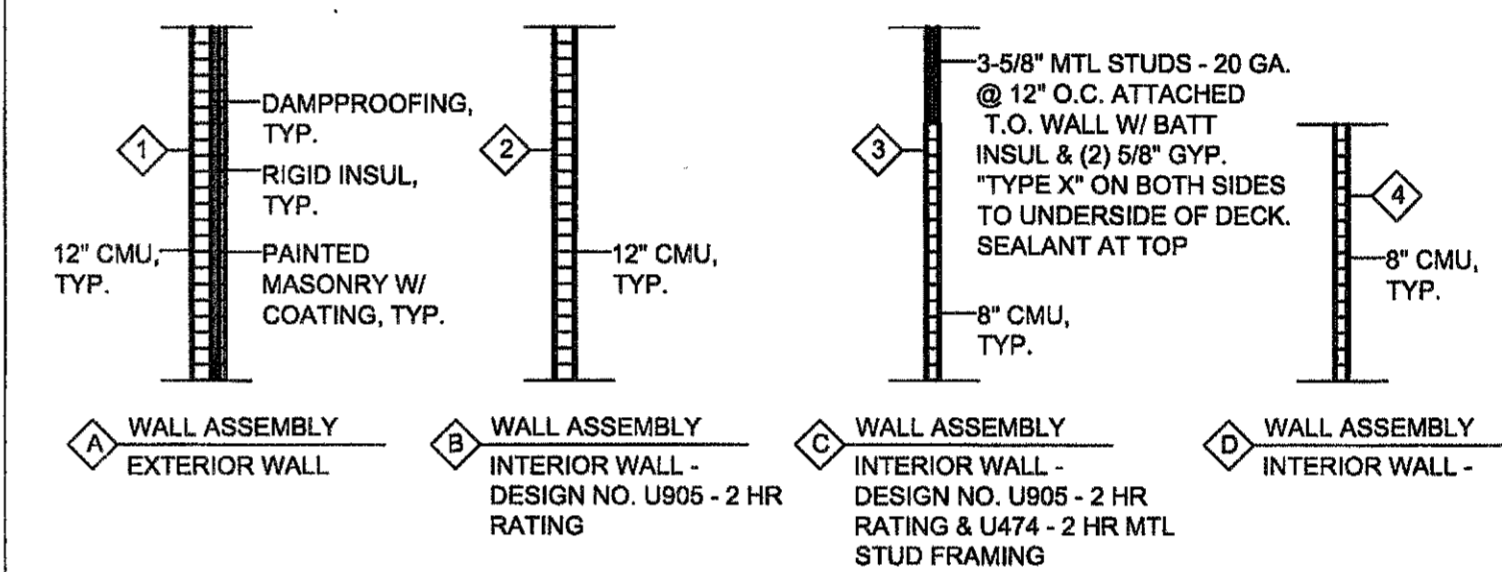
SYMBOL LEGEND

Table of symbols and their meanings, including COLUMN GRID, DRAWING TITLE, BUILDING SECTION, DETAIL SYMBOL, DIMENSION TO FINISH FACE, ELEVATION, ROOM NAME & NUMBER, DOOR IDENTIFICATION, WALL TYPE, ELEVATION MARKER, BREAK LINE, and NORTH ARROW.

WALL TYPES

- 12" C.M.U. WALL WITH HORIZ. REINF. @ EVERY OTHER COURSE WITH 1 1/2" RIGID BATT INSUL & 1" AIR SPACE WITH 4" TEXTURED MASONRY VENEER ATTACHED BY MASONRY TIES AND STEEL ANGLES, INCLUL. CONT. WALL FLASHING. WEEP HOLES @ 24" O.C. VERT.
12" C.M.U. WALL WITH HORIZ. REINF. @ EVERY OTHER COURSE
8" C.M.U. WALL WITH HORIZ. REINF. @ EVERY OTHER COURSE WITH 4" METAL STUD - 20 GA. AT TOP OF WALL @ 12" O.C. W/ BATT INSUL. & (2) 5/8" TYPE X GYP. WALLBOARD ON BOTH SIDES WITH FIRE CAULKING SEALANT AT TOP OF WALL AT UNDERSIDE OF DECKING OR STRUCTURE
8" C.M.U. WALL WITH HORIZ. REINF. @ EVERY OTHER COURSE

PARTITION TYPES



CODE SUMMARIES

Table with 2 columns: ELECTRICAL BUILDING and SUBCLASSIFICATION: SPECIAL PURPOSE INDUSTRIAL OCCUPANCY. Includes rows for TOTAL BUILDING AREA, TOTAL NET FLOOR AREA, CONSTRUCTION TYPE, and OCCUPANCY CLASS.

APPLICABLE CODES:

- ALL WORK IN THESE DOCUMENTS SHALL COMPLY WITH THE FOLLOWING CODES:
2006 STANDARD BUILDING CODE (INTERNATIONAL BUILDING CODE) W/ 2007 GA AMENDMENTS OR THE LATEST
2006 STANDARD PLUMBING CODE (INTERNATIONAL BUILDING CODE) W/ 2007 GA AMENDMENTS OR THE LATEST
2006 STANDARD MECHANICAL CODE (INTERNATIONAL BUILDING CODE) W/ 2007 GA AMENDMENTS OR THE LATEST
2006 STANDARD GAS CODE CODE (INTERNATIONAL BUILDING CODE) W/ 2007 GA AMENDMENTS OR THE LATEST
2006 INTERNATIONAL ENERGY CONSERVATION CODE W/ 2007 GA AMENDMENTS OR THE LATEST
2005 NFPA 70, NATIONAL ELECTRICAL CODE W/ 2008 GA AMENDMENTS OR THE LATEST
1996 ANSI 17.1 ELEVATOR CODE W/GA AMENDMENTS OR THE LATEST
2006 INTERNATIONAL FIRE CODE W/ 2007 GA AMENDMENTS OR THE LATEST
2007 EDITION OF THE RULES AND REGULATIONS OF THE SAFETY FIRE COMMISSIONER, CHAPTER 120-3-3
2000 NFPA 101 LIFE SAFETY CODE W/ 2007 GA AMENDMENTS OR THE LATEST
2006 NFPA 72 NATIONAL FIRE ALARM CODE W/ 2002 GA AMENDMENTS OR THE LATEST



PEACHTREE CREEK SOUTH FORK RELIEF STORAGE AND PUMPING STATION



DEPARTMENT OF WATERSHED MANAGEMENT

Table with 3 columns: REV, DATE, REVISION DESCRIPTION. Contains a grid for tracking revisions.

Table with 2 columns: PROJECT NO. (FC-6260), DATE (OCTOBER 2012). Includes fields for RESP PROF, DESIGNER, and CHECKER.

SHEET TITLE: ARCHITECTURAL 07 - JET MIX PUMP STATION GENERAL NOTES & LEGEND