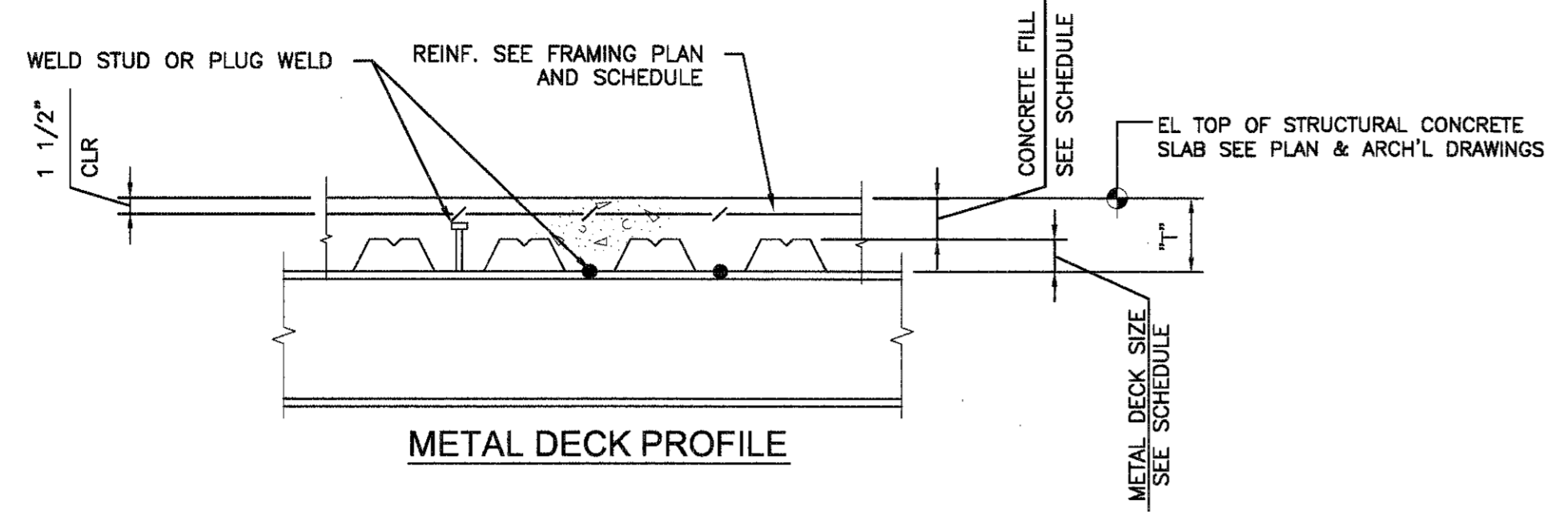


1 2 3 4 5 6 7 8

F



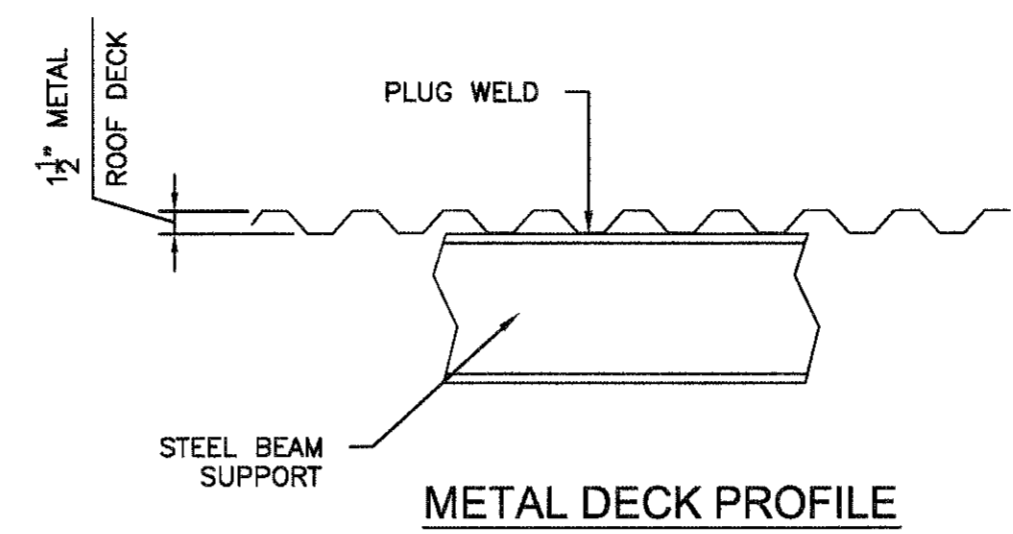
DECK TYPE	DECK SIZE	CONC FILL	t	STEEL DECK PROPERTIES	DECK REINFORCING UON	DECK-MAX UNSHORED LENGTH (SEE NOTE 2)	
						NO OF SPANS	LENGTH
B FORMLOK	1 1/2"-18 GA	2 1/2"	4"	+ S = 0.322 IN - S = 0.335 IN I = 0.302 IN	WWF 4x4-W4.0xW4.0	1-SPAN	8'-0"
						2-SPAN	9'-0"
						3-SPAN	10'-0"
B FORMLOK	1 1/2"-18 GA	3 1/2"	5"	+ S = 0.322 IN - S = 0.335 IN I = 0.302 IN	WWF 4x4-W4.0xW4.0	1-SPAN	7'-6"
						2-SPAN	8'-0"
						3-SPAN	9'-0"
B FORMLOK	2"-16 GA	7"	9"	+ S = 0.653 IN <sup>3</sup> - S = 0.653 IN <sup>3</sup> I = 0.704 IN <sup>4</sup>	#5 @ 8" O.C. EACH WAY	1-SPAN	7'-6"
						2-SPAN	8'-0"
						3-SPAN	9'-0"

NOTES:

- STEEL FORM DECK SHALL CONFORM TO THE REQUIREMENTS OF SPECIFICATION SECTION 05310. MIN Fy=38 ksi
- STEEL DECK SHALL BE SHORED @ MID SPAN WHERE SPAN EXCEEDS MAXIMUM UNSHORED LENGTH.
- FASTEN SIDE LAPS AT 36" OC MAX (2" LONG WELDS MIN.). WELDING AT SUPPORT PARALLEL TO DECK SHALL BE 12" O.C. FASTEN AT ENDS OF SUPPORTING STRUCTURAL STEEL MEMBERS.
- ENDS OF PANELS SHALL BE OVER SUPPORTING STRUCTURAL STEEL MEMBERS WITH MINIMUM BEARING OF 1 1/2", UNLESS OTHERWISE SHOWN.
- DECK SHALL BE ATTACHED TO THE STRUCTURAL MEMBERS PER MANUFACTURES RECOMENDATIONS AND SHALL SATISFY THE FOLLOWING MINIMUM REQUIREMENTS UON. ALL COMPOSITE DECK SHALL HAVE #3/4" PUDDLE WELDS AT ALL SUPPORTS (7 PER 36" SHEET) MARGIN WELDS @12" O.C. AT ALL MEMBERS PARALLEL TO DECK RIBS, UNLESS OTHERWISE NOTED. (ALLOWABLE SHEAR BASED ON 7'-6" SPAN AND 4 3/4" TOTAL THICKNESS = 2225#/LF.).
- FLOOR AND ROOF SYSTEM SHALL MEET UNDERWRITERS LAB REQUIRMENTS FOR 2HR FIRE RESISTIVE RATING IN AREAS NOTED BY ARCHITECTURAL DRAWINGS.
- METAL DECKS SHALL BE VULCRAFT FORMLOK IN ACCORDANCE WITH NO ER-2078P BY ICBO EVALUATION SERVICE, INC. OR EQUAL. ALL DECKS SHALL HAVE VENT TABS. ALL DECKS SHALL BE G60 GALVANIZED COATED.

2  
SD-506

METAL DECK FORM WITHOUT CONCRETE TOPPING



DECK TYPE	DECK SIZE	STEEL DECK PROPERTIES
1.5B	1 1/2"-18GA	+S=0.318 IN <sup>3</sup> -S=0.327 IN <sup>3</sup> I=0.292 IN <sup>4</sup>
1.5C	1 1/2"-18GA	+S=0.327 IN <sup>3</sup> -S=0.318 IN <sup>3</sup> I=0.295 IN <sup>4</sup>

METAL DECK SCHEDULE

NOTES:

- STEEL FORM DECK SHALL CONFORM TO THE REQUIREMENTS OF SPECIFICATION SECTION 05310.
- FASTEN SIDE LAPS AT 36" OC MAX (2" LONG WELDS MIN.). WELDING AT SUPPORT PARALLEL TO DECK SHALL BE 12" OC. FASTEN AT ENDS OF SUPPORTING STRUCTURAL STEEL MEMBERS.
- ENDS OF PANELS SHALL BE OVER SUPPORTING STRUCTURAL STEEL MEMBERS WITH MIN BEARING OF 1 1/2" UNLESS OTHERWISE SHOWN.
- DECK SHALL BE ATTACHED TO STRUCTURAL MEMBERS PER MANUFACTURERS RECOMMENDATIONS AND SHALL SATISFY THE FOLLOWING MINIMUM REQUIREMENTS UON. ALL DECK SHALL HAVE 3/4" PUDDLE WELDS AT ALL SUPPORTS (7 PER 36" SHEET) MARGIN WELDS AT 12"OC AT ALL MEMBERS PARALLEL TO DECK RIBS UON.
- FLOOR AND ROOF SHALL MEET UNDERWRITERS LAB REQUIREMENTS FOR 2 HR FIRE RESISTIVE RATING IN AREAS NOTED BY ARCHITECTURAL DRAWINGS. SHALL HAVE VENT TABS.
- METAL DECKS SHALL BE VULCRAFT IN ACCORDANCE WITH NO ER-2078P BY ICBO EVALUATION SERVICE INC OR EQUAL. ALL DECKS

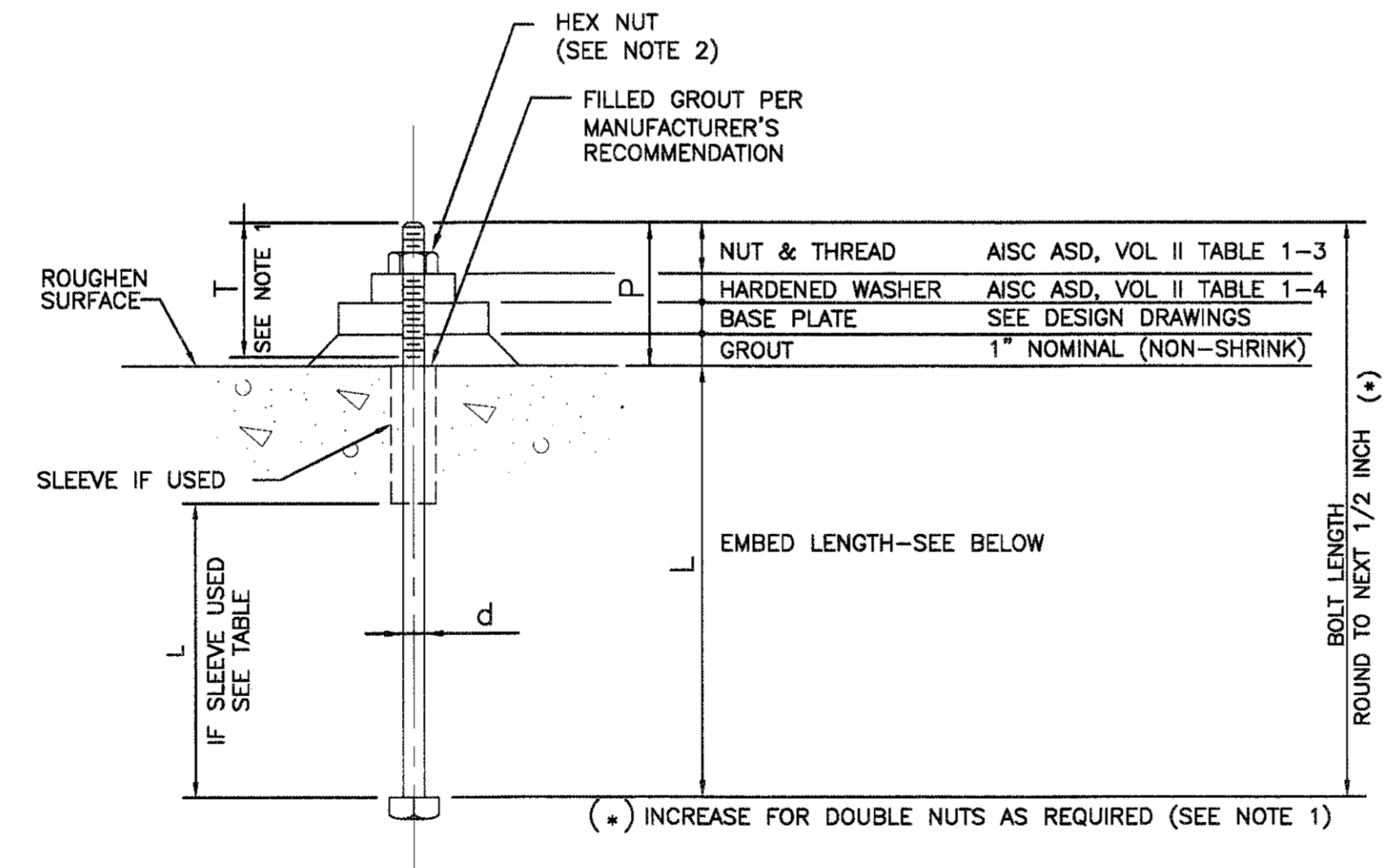
D

C

1  
SD-506

METAL DECK FORM WITH CONCRETE TOPPING

BOLT DIA (in.)	A307 HEADED ANCHOR BOLTS			PLASTIC SLEEVES	
	MIN EDGE (in.)	MIN EMBEDMENT (L) (in.)	MIN SPACING (in.)	DIA (OD) (in.)	LENGTH (L) (in.)
0.500	4.0	8.0	6.0	2.0	5.0
0.625	4.0	10.0	7.5	2.0	7.0
0.750	4.0	12.0	9.0	2.0	7.0
0.875	5.0	14.0	10.5	2.0	7.0
1.000	5.0	15.0	12	3.0	10.0
1.125	6.0	17.0	13.5	3.0	10.0
1.250	7.0	19.0	15.0	3.0	10.0
1.375	7.0	21.0	16.5	3.0	10.0
1.375	8.0	21.0	16.5	3.0	10.0
1.500	8.0	23.0	18.0	4.0	15.0
1.750	9.0	27.0	18.0	4.0	15.0
1.750	10.0	27.0	18.0	4.0	15.0
1.750	11.0	27.0	18.0	4.0	15.0
2.000	10.0	30.0	18.0	4.0	18.0
2.000	11.0	30.0	18.0	4.0	18.0



NOTES:

- BOLTS SHALL HAVE CUT THREADS, THREADED TO U.N.C. THREAD SERIES, CLASS 2A. LENGTH OF THREADS "T" SHALL BE A MINIMUM OF 2d + 1/2 INCH, EXCEPT WHEN 2 NUTS ARE SPECIFIED "T" SHALL BE 3d + 1/2 INCH.
- USE DOUBLE NUTS ON ANCHOR BOLTS WHERE VIBRATION IS PRESENT.

3  
SD-506

ANCHOR BOLT DETAIL

A



PEACHTREE CREEK SOUTH FORK RELIEF STORAGE AND PUMPING STATION  
CITY OF ATLANTA  
DEPARTMENT OF WATERSHED MANAGEMENT

REV	DATE	REVISION DESCRIPTION

THIS LINE IS ONE INCH LONG WHEN PLOTTED FULL SCALE

THIS DRAWING MUST BE USED IN CONJUNCTION WITH THE APPLICABLE OR GOVERNING TECHNICAL SPECIFICATIONS AND OTHER CONTRACT DOCUMENTS.

PROJECT NO: FC-6260  
DATE: OCTOBER 2012

RESP PROF: FT    DESIGNER: NSH    CHECKER: NSF

SHEET TITLE  
**STRUCTURAL  
STANDARD DETAILS**

SHEET NO. SD-506    REV. 0