

F

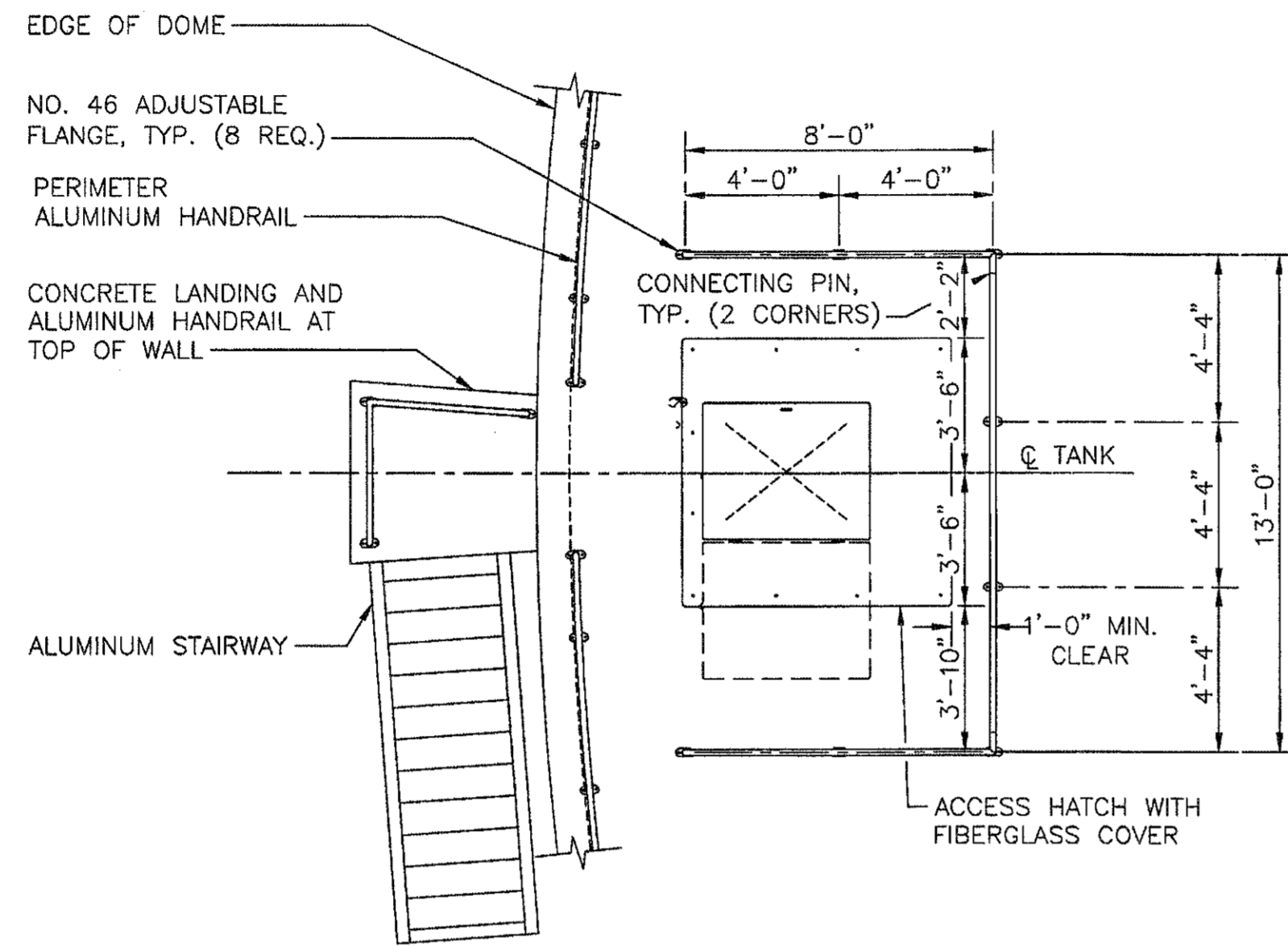
E

D

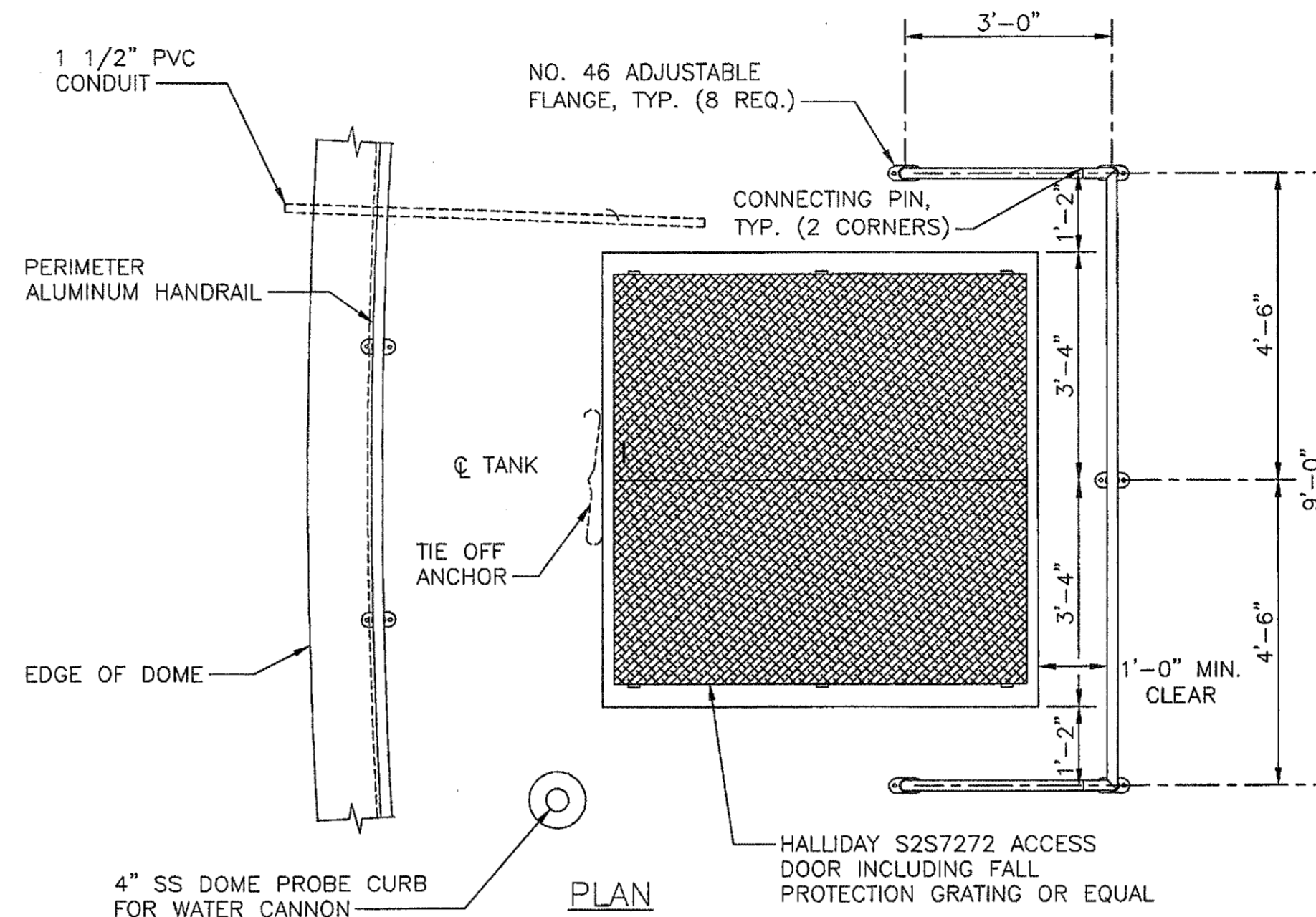
C

B

A



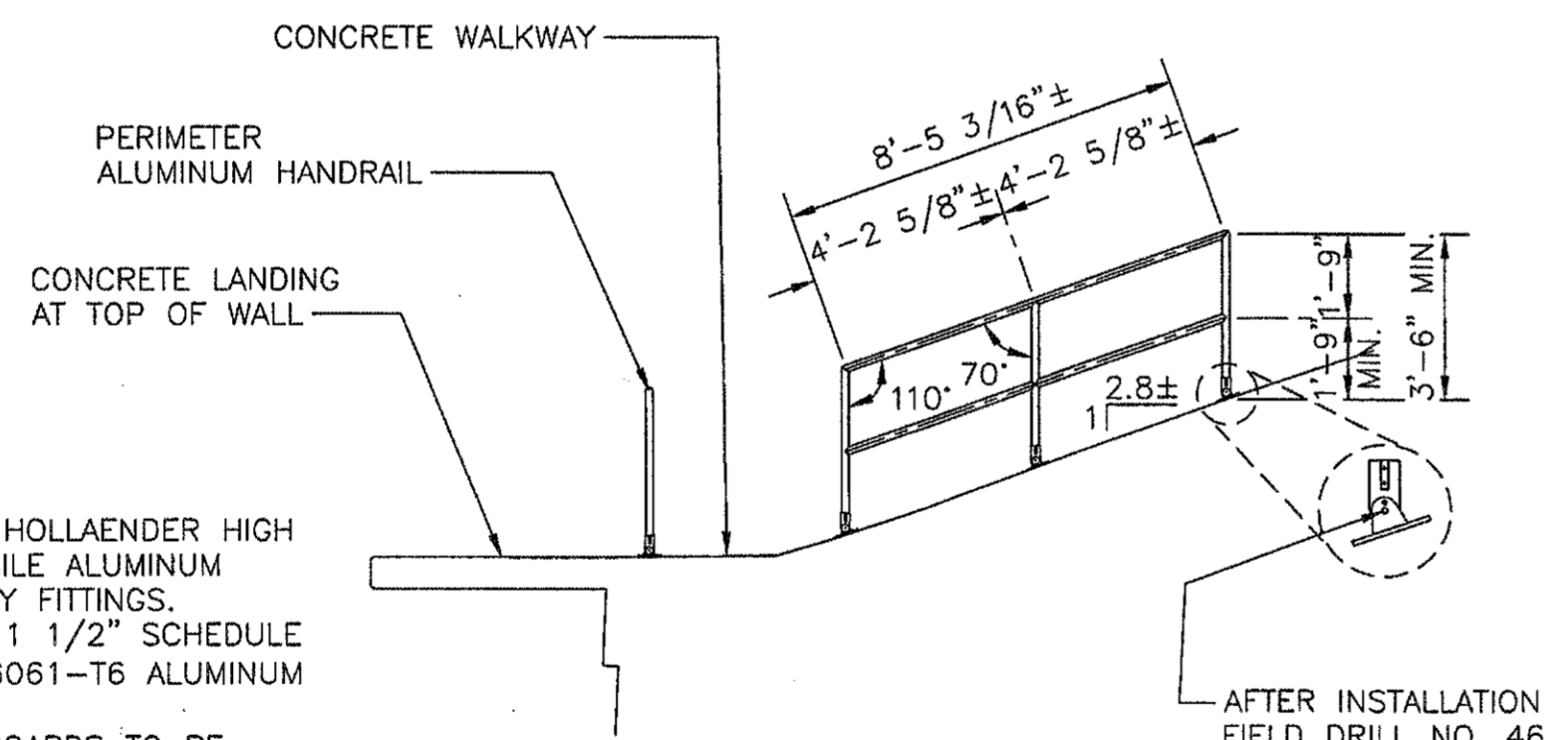
PLAN



PLAN

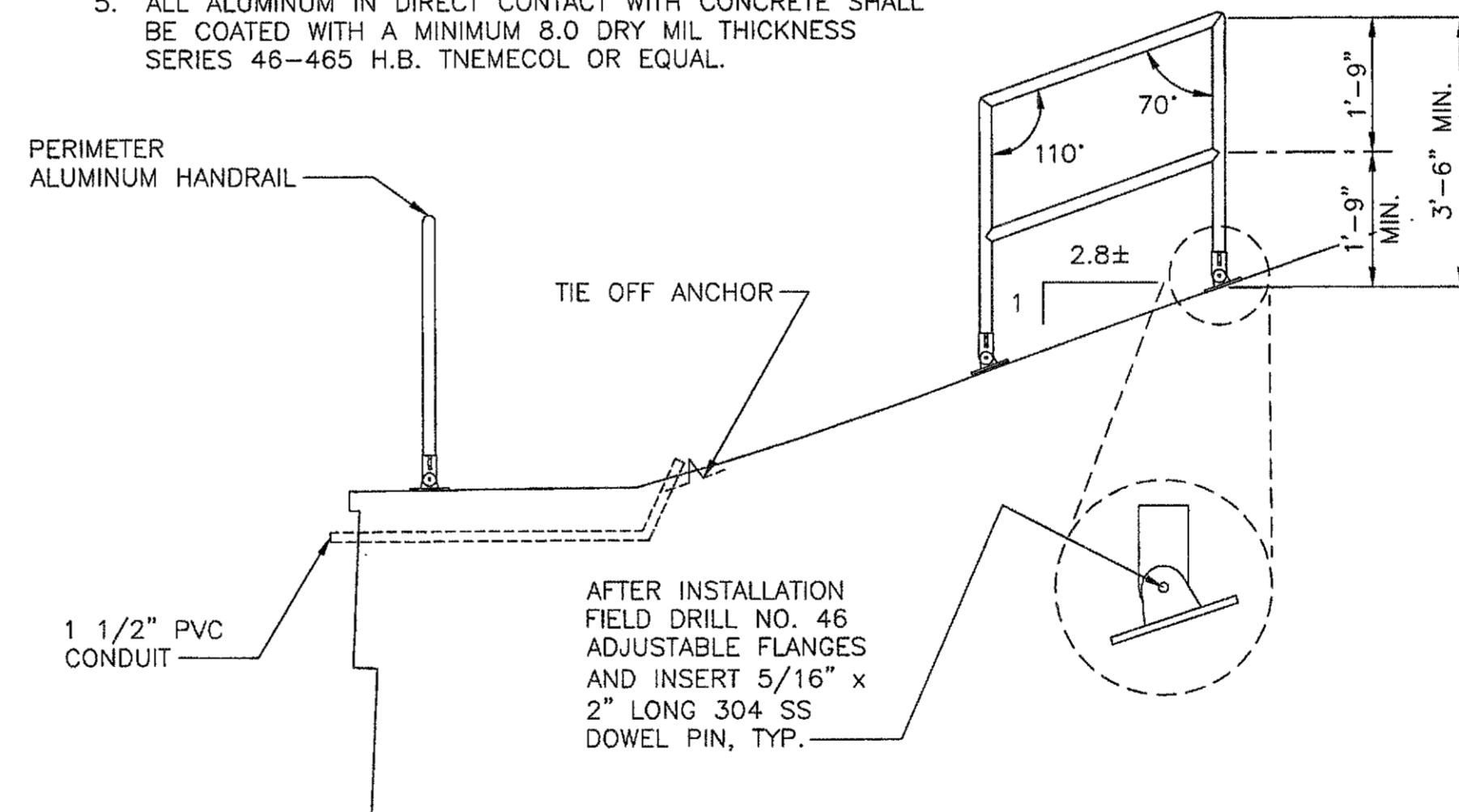
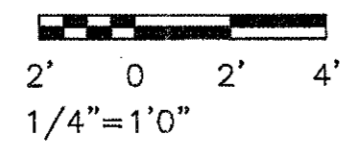
NOTES:

1. USE HOLLAENDER HIGH TENSILE ALUMINUM ALLOY FITTINGS.
2. USE 1 1/2" SCHEDULE 40/6061-T6 ALUMINUM PIPE.
3. TOEBOARDS TO BE 6061-T6 ALUMINUM.
4. USE 1/2" x 2 3/4" 316 SS EXPANSION ANCHORS (POWERS POWER-STUD™ #7620 OR EQUAL)(24 REQ.).
5. ALL ALUMINUM IN DIRECT CONTACT WITH CONCRETE SHALL BE COATED WITH A MINIMUM 8.0 DRY MIL THICKNESS SERIES 46-465 H.B. TNE MECOL OR EQUAL.



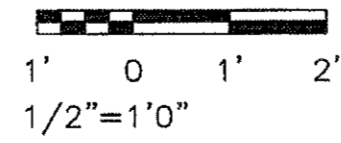
ELEVATION

ALUMINUM HANDRAIL



ELEVATION

ALUMINUM HATCH WITH HANDRAIL (4 REQ.)



NOTES:

1. USE HOLLAENDER HIGH TENSILE ALUMINUM ALLOY FITTINGS.
2. USE 1 1/2" SCHEDULE 40/6061-T6 ALUMINUM PIPE.
3. TOEBOARDS TO BE 6061-T6 ALUMINUM.
4. USE 1/2" x 2 3/4" 316 SS EXPANSION ANCHORS (POWERS POWER-STUD™ #7620 OR EQUAL)(24 REQ.).
5. ALL ALUMINUM IN DIRECT CONTACT WITH CONCRETE SHALL BE COATED WITH A MINIMUM 8.0 DRY MIL THICKNESS SERIES 46-465 H.B. TNE MECOL OR EQUAL.



PEACHTREE CREEK SOUTH FORK  
RELIEF STORAGE AND PUMPING STATION



CITY OF ATLANTA

DEPARTMENT OF WATERSHED MANAGEMENT

REV	DATE	DESCRIPTION
0	10/28/12	100 PERCENT BID PACKAGE

THIS LINE IS ONE INCH LONG WHEN PLOTTED FULL SCALE  
THIS DRAWING MUST BE USED IN CONJUNCTION WITH THE APPLICABLE OR GOVERNING TECHNICAL SPECIFICATIONS AND OTHER CONTRACT DOCUMENTS.

PROJECT NO: FC-6260  
DATE: OCTOBER 2012  
RESP PROF: CROM DESIGNER: CROM CHECKER: DSF

SHEET TITLE  
STRUCTURAL  
08 - EQUALIZATION TANK  
DETAILS

SHEET NO. S8-505 REV. 0

