

TANK SITE (SHEETS LS101 AND LS102)
 SITE ZONED INDUSTRIAL: MINIMUM OF 90 INCHES OF DBH PER ACRE TO BE RETAINED.
 3.77 ACRES X 90 INCHES = 338 DBH TO BE RETAINED ON TANK SITE
 EXISTING DBH: 1,619
 DBH REMOVED: 638
 DBH RETAINED ON TANK SITE: 981

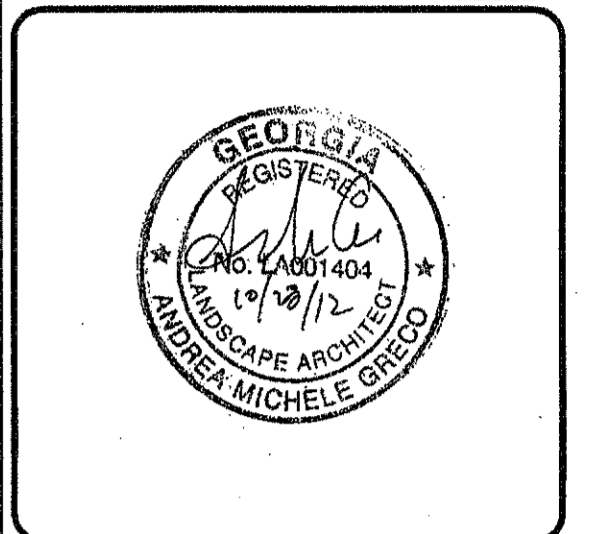
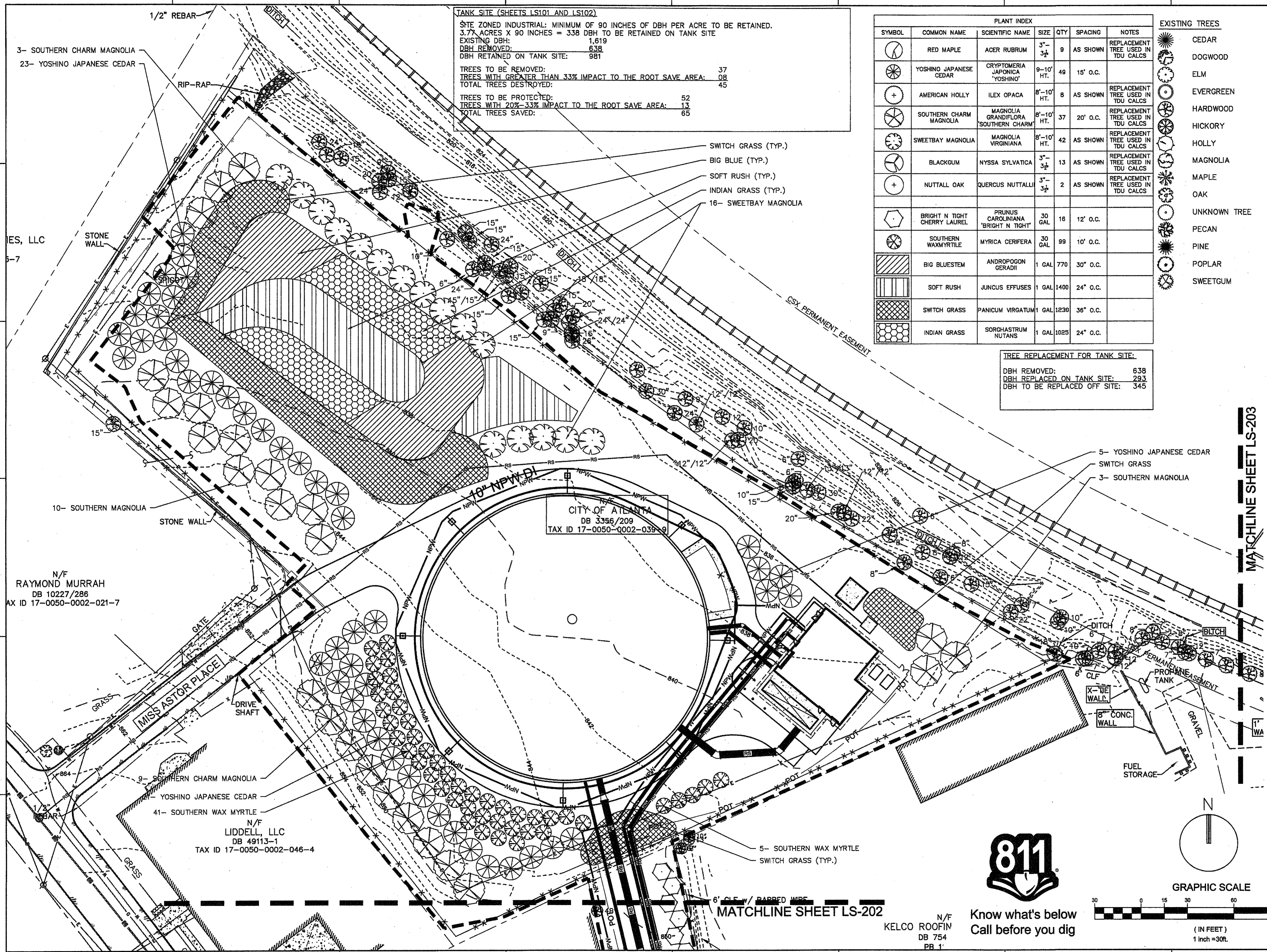
TREES TO BE REMOVED: 37
 TREES WITH GREATER THAN 33% IMPACT TO THE ROOT SAVE AREA: 08
 TOTAL TREES DESTROYED: 45

TREES TO BE PROTECTED: 52
 TREES WITH 20%-33% IMPACT TO THE ROOT SAVE AREA: 13
 TOTAL TREES SAVED: 65

PLANT INDEX						
SYMBOL	COMMON NAME	SCIENTIFIC NAME	SIZE	QTY	SPACING	NOTES
(Symbol)	RED MAPLE	ACER RUBRUM	3"-3 1/2"	9	AS SHOWN	REPLACEMENT TREE USED IN TDU CALCS
(Symbol)	YOSHINO JAPANESE CEDAR	CRYPTOMERIA JAPONICA 'YOSHINO'	9'-10' HT.	49	15' O.C.	
(Symbol)	AMERICAN HOLLY	ILEX OPACA	8'-10' HT.	8	AS SHOWN	REPLACEMENT TREE USED IN TDU CALCS
(Symbol)	SOUTHERN CHARM MAGNOLIA	MAGNOLIA GRANDIFLORA 'SOUTHERN CHARM'	8'-10' HT.	37	20' O.C.	REPLACEMENT TREE USED IN TDU CALCS
(Symbol)	SWEETBAY MAGNOLIA	MAGNOLIA VIRGINIANA	8'-10' HT.	42	AS SHOWN	REPLACEMENT TREE USED IN TDU CALCS
(Symbol)	BLACKGUM	NYSSA SYLVATICA	3"-3 1/2"	13	AS SHOWN	REPLACEMENT TREE USED IN TDU CALCS
(Symbol)	NUTTALL OAK	QUERCUS NUTTALLI	3"-3 1/2"	2	AS SHOWN	REPLACEMENT TREE USED IN TDU CALCS
(Symbol)	BRIGHT N TIGHT CHERRY LAUREL	PRUNUS CAROLINIANA 'BRIGHT N TIGHT'	30 GAL	18	12' O.C.	
(Symbol)	SOUTHERN WAXMYRTLE	MYRICA CERIFERA	30 GAL	99	10' O.C.	
(Symbol)	BIG BLUESTEM	ANDROPOGON GERARDII	1 GAL	770	30" O.C.	
(Symbol)	SOFT RUSH	JUNCUS EFFUSES	1 GAL	1400	24" O.C.	
(Symbol)	SWITCH GRASS	PANICUM VIRGATUM	1 GAL	1230	36" O.C.	
(Symbol)	INDIAN GRASS	SORGHASTRUM NUTANS	1 GAL	1025	24" O.C.	

- EXISTING TREES**
- (Symbol) CEDAR
 - (Symbol) DOGWOOD
 - (Symbol) ELM
 - (Symbol) EVERGREEN
 - (Symbol) HARDWOOD
 - (Symbol) HICKORY
 - (Symbol) HOLLY
 - (Symbol) MAGNOLIA
 - (Symbol) MAPLE
 - (Symbol) OAK
 - (Symbol) UNKNOWN TREE
 - (Symbol) PECAN
 - (Symbol) PINE
 - (Symbol) POPLAR
 - (Symbol) SWEETGUM

TREE REPLACEMENT FOR TANK SITE:
 DBH REMOVED: 638
 DBH REPLACED ON TANK SITE: 293
 DBH TO BE REPLACED OFF SITE: 345



PEACHTREE CREEK SOUTH FORK
 RELIEF STORAGE AND PUMPING STATION

CITY OF ATLANTA
 DEPARTMENT OF WATERSHED MANAGEMENT

REV	DATE	DESCRIPTION
0	10/28/12	100 PERCENT BID PACKAGE

THIS LINE IS ONE INCH LONG WHEN PLOTTED FULL SCALE
 THIS DRAWING MUST BE USED IN CONDUCTION WITH THE APPLICABLE OR GOVERNING TECHNICAL SPECIFICATIONS AND OTHER CONTRACT DOCUMENTS.

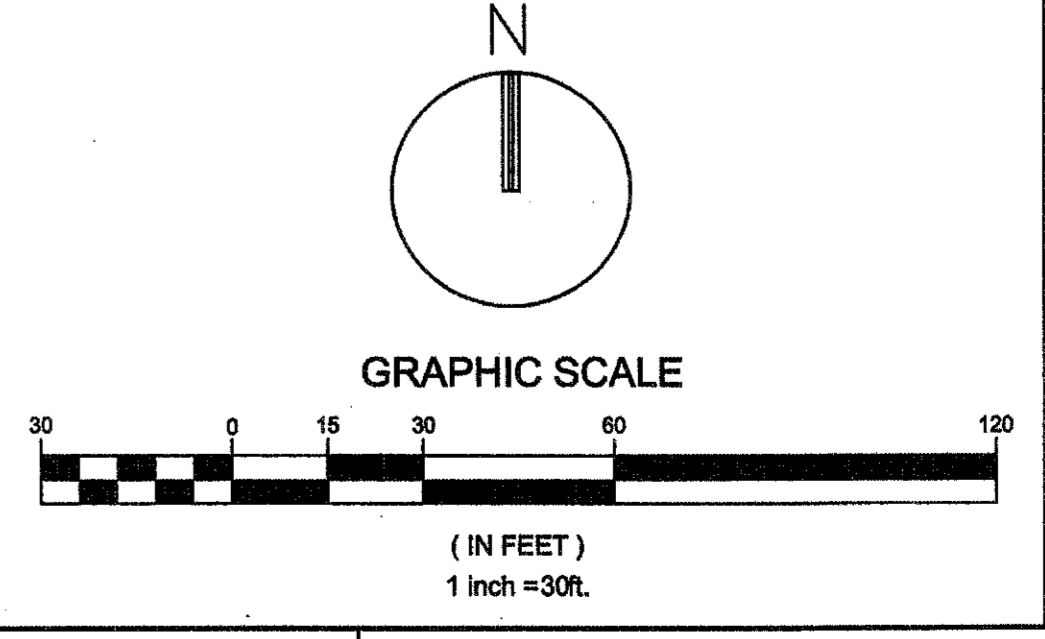
PROJECT NO: FC-6260
 DATE: OCTOBER 2012
 RESP PROF: AG
 DESIGNER: AH
 CHECKER: []

SHEET TITLE
 LANDSCAPE
 00 - GENERAL SITE
 PLANTING
 PLAN

SHEET NO. LS201 REV. 0



Know what's below
 Call before you dig



MATCHLINE SHEET LS-202

N/F
 KELCO ROOFIN
 DB 754
 PB 1'