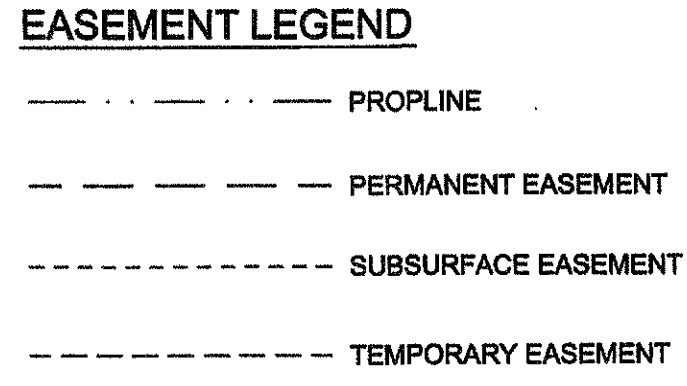
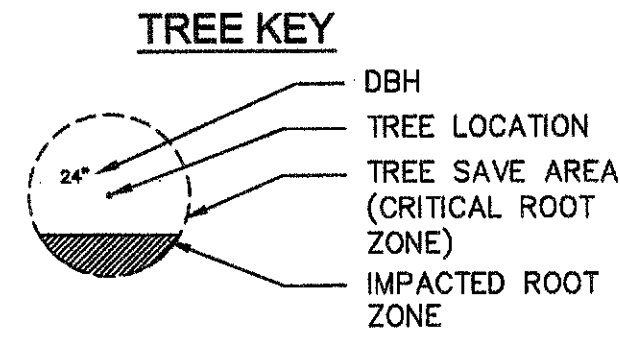


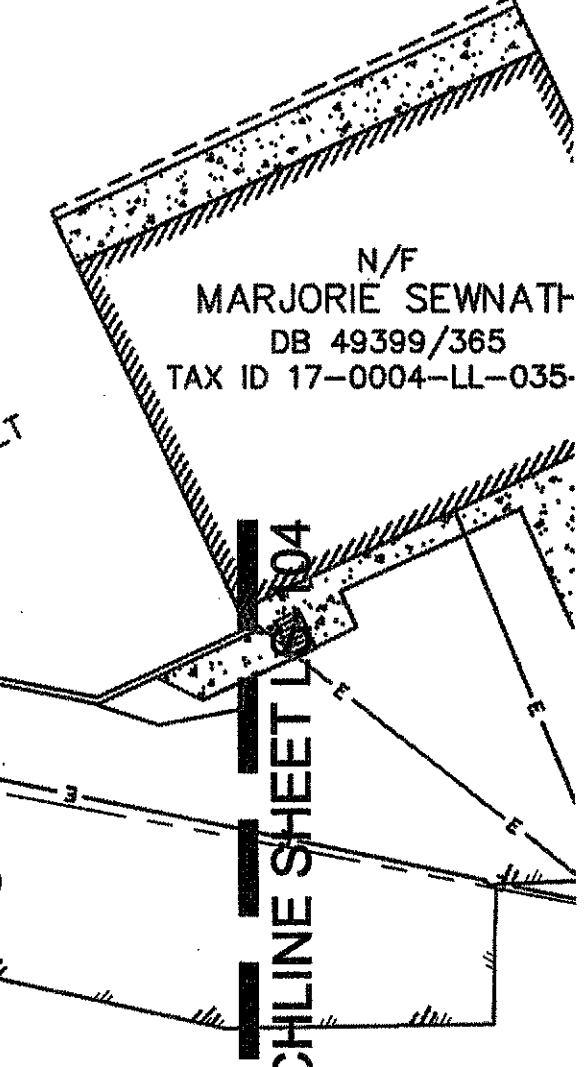
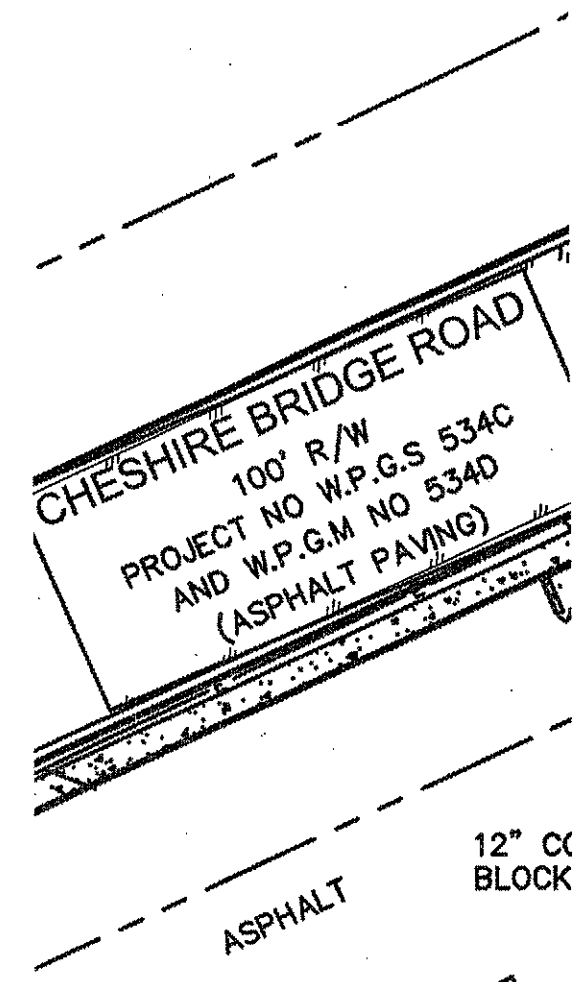
**PUMPING STATION SITE**  
 TREES TO BE REMOVED: 136  
 TREES WITH GREATER THAN 20% IMPACT TO THE ROOT SAVE AREA: 0  
 TOTAL IMPACTED TREES: 136



**IMPACTED TREE NOTES:**

- 67% OF THE ROOT SAVE AREA IS TO BE PROTECTED AND THE STRUCTURAL ROOT PLATE WILL NOT BE DISTURBED.
- AN ISA ARBORIST WILL BE RETAINED TO PRESCRIBE AND MONITOR THE IMPLEMENTATION OF MEASURES TO MAXIMIZE THE SURVIVAL AND PROTECTION OF THE TREE, INCLUDING BUT NOT LIMITED TO ROOT PRUNING, CANOPY PRUNING, MULCHING, WATERING, FERTILIZATION, AND ENHANCED PROTECTIVE FENCING.
- THE PRESCRIPTION OF THE RETAINED ARBORIST WILL BE APPROVED BY THE CITY ARBORIST OR A CITY FORESTER IN ADVANCE OF CONSTRUCTION.
- A REPORT ON THE EFFECTIVENESS OF THE PRESCRIBED MEASURES WILL BE SUBMITTED BY THE RETAINED ARBORIST TO THE CITY ARBORIST OR CITY FORESTER PRIOR TO ISSUANCE OF A CERTIFICATE OF OCCUPANCY.
- NO TREE SHALL BE REMOVED, REGARDLESS OF PERCENTAGE OF IMPACT TO ROOT SAVE AREA, UNLESS MARKED WITH THE "X" SYMBOL INDICATING THAT IT IS TO BE REMOVED.
- TREES WITH IMPACT TO THE ROOT AREA IN EXCESS OF 33% ARE CONSIDERED LOST AND CALCULATED AS SUCH IN THE RECOMPENSE FORMULA.
- PROPERTY OWNERS OF BOUNDARY TREES TO BE REMOVED OR IMPACTED ARE TO BE NOTIFIED BY DEVELOPER PRIOR TO THE START OF CONSTRUCTION.
- CLIENT TO RETAIN ISA CERTIFIED ARBORIST TO DETERMINE IF THE THREE 30" "POSSIBLE SPECIMEN TREES" MEET THE CITY OF ATLANTA SPECIMEN TREE QUALIFICATIONS. IF THE TREES ARE DETERMINED TO MEET SPECIMEN QUALIFICATIONS, CLIENT IS TO OBTAIN APPROVAL FROM THE CITY OF ATLANTA ARBORIST IN WRITING BEFORE REMOVAL.

X = TREE TO BE REMOVED  
 TP = TREE PROTECTION FENCING

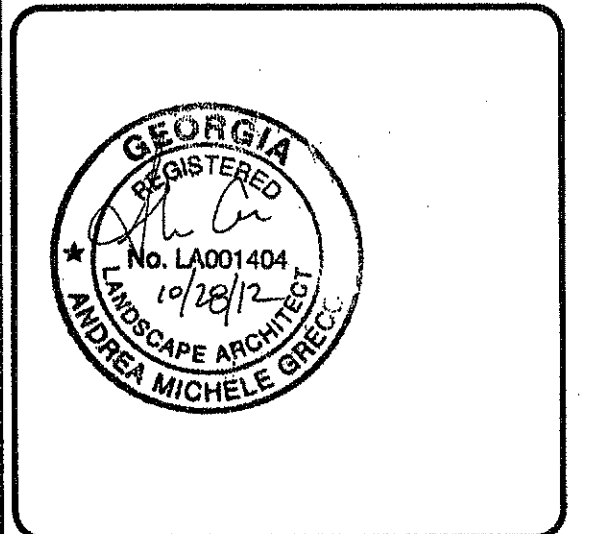
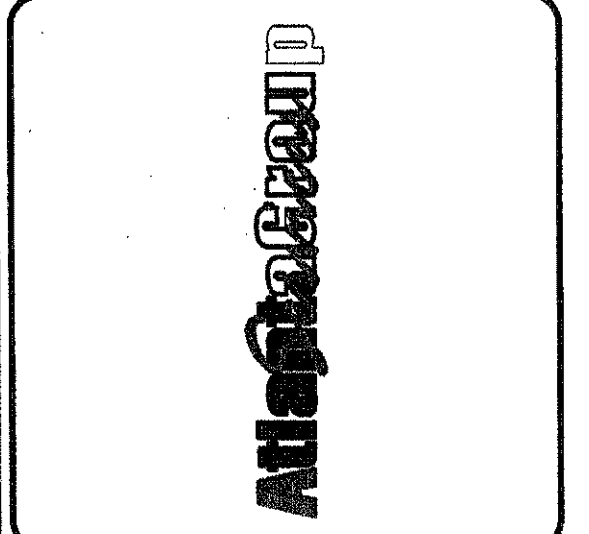
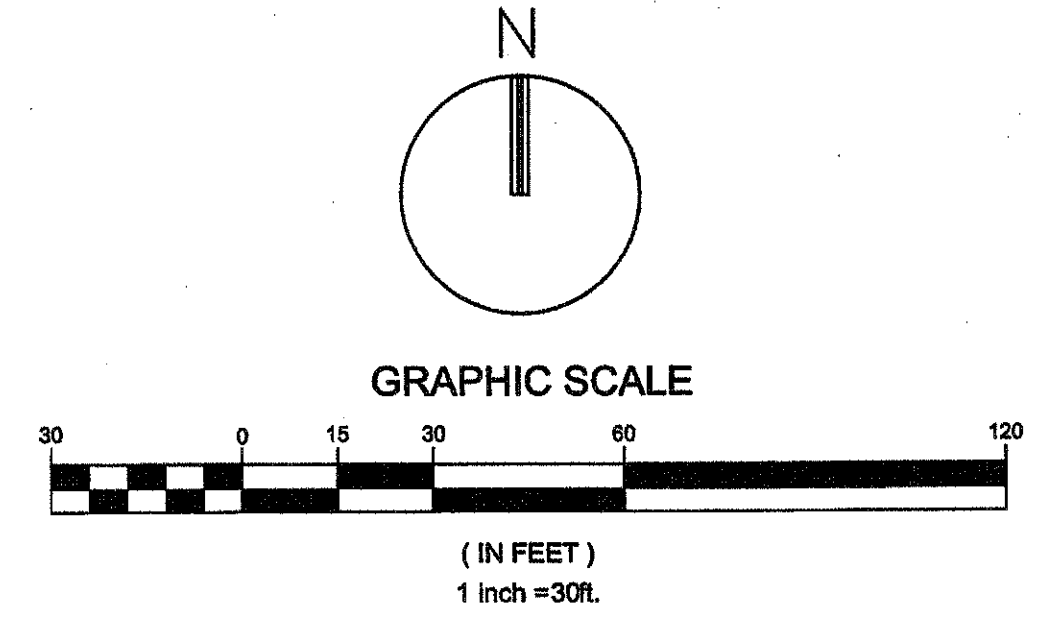


N/F  
 HERBERT CRAIG HAYES  
 DB 43969/46  
 TAX ID 17-0050-0008-048-6

FLOODPLAIN LIMITS.



Know what's below  
 Call before you dig



PEACHTREE CREEK SOUTH FORK  
 RELIEF STORAGE AND PUMPING STATION

CITY OF ATLANTA  
 DEPARTMENT OF WATERSHED MANAGEMENT

REV	DATE	REVISION DESCRIPTION
0	10/28/12	100 PERCENT BID PACKAGE

THIS LINE IS ONE INCH LONG WHEN PLOTTED FULL SCALE  
 THIS DRAWING MUST BE USED IN CONJUNCTION WITH THE APPLICABLE OR GOVERNING TECHNICAL SPECIFICATIONS AND OTHER CONTRACT DOCUMENTS.  
 PROJECT NO: FC-6260  
 DATE: OCTOBER 2012  
 RESP PROF: DW    DESIGNER: DW    CHECKER: DW  
 SHEET TITLE: LANDSCAPE 00 - GENERAL SITE TREE REMOVAL PLAN  
 SHEET NO. LS103    REV. 0