

F
E
D
C
B
A

N/F
LIDDELL DRIVE ASSOCIATES, LLC
DB 27659/60
TAX ID 17-0050-0002-036-5

N/F
CHESHIRE BRIDGE PROPERTIES, LLC
DB 40869/606
TAX ID 17-0050-0002-035-7

SOILS LEGEND

- CpA CONGAREE SANDY LOAM, 0 TO 2 PERCENT SLOPES, OCCASIONALLY FLOODED
- UrE URBAN LAND-RION COMPLEX, 10 TO 25 PERCENT SLOPES
- W WATER
- Ub URBAN LAND

SOILS DELINEATION

STRUCTURAL PRACTICES

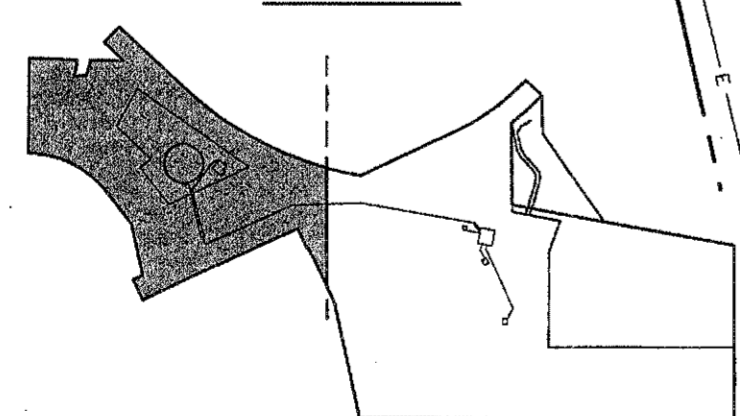
CODE	PRACTICE	DETAIL	MAP SYMBOL	DESCRIPTION
Cd	CHECKDAMS			A small temporary barrier or dam constructed across a swale, drainage ditch or area of concentrated flow.
Co	CONSTRUCTION EXIT			A crushed stone pad located at the construction exit to provide a place for removing mud from tires thereby protecting public streets.
Cr	CONSTRUCTION ROAD			A crushed stone road located at the end of the construction exit to provide a place road removing mud from tires thereby protecting public streets.
Sd1	SEDIMENT BARRIER			A barrier to prevent sediment from leaving the construction site. It may be sandbags, bales of straw or hay, brush, logs and poles, gravel or a silt fence.
Sd2	INLET SEDIMENT TRAP			An impounding area created by excavating around a storm drain inlet. The excavated area will be filled and stabilized on completion of construction activities.
Sd3	TEMPORARY SEDIMENT BASIN			A basin created by excavation or a dam across a waterway. The surface water runoff is temporarily stored allowing the bulk of the sediment to drop out.
St	STORM DRAIN OUTLET PROTECTION			A paved or short section of riprap channel at the outlet of a storm drain system preventing erosion from the concentrated runoff.
Su	SURFACE ROUGHENING			A rough soil surface with horizontal depressions on a contour or slope left in a roughened condition after grading.

VEGETATIVE PRACTICES

CODE	PRACTICE	DETAIL	MAP SYMBOL	DESCRIPTION
Ds1	DISTURBED AREA STABILIZATION (WITH MULCHING ONLY)			Establishing temporary protection for disturbed areas where seedings may not have a suitable growing season to produce an erosion retarding cover.
Ds2	DISTURBED AREA STABILIZATION (WITH TEMPORARY SEEDING)			Establishing a temporary vegetative cover with fast growing seedings on disturbed areas.
Ds3	DISTURBED AREA STABILIZATION (WITH PERMANENT VEGETATION)			Establishing a permanent vegetative cover such as trees, shrubs, vines, grasses, sod, or legumes on disturbed areas.
Mb	EROSION CONTROL MATTING AND BLANKETS			The installation of a protective covering (blanket) or soil stabilization mat on a prepared planting area of a steep slope, channel, or shoreline.
Du	DUST CONTROL ON DISTURBED AREAS			Controlling surface and air movement of dust on construction site, roadways and similar sites.

CONSTRUCTION SIGN(4'X8') INCLUDING SITE IDENTIFICATION PERMITEE, CONTACT PERSON, TELEPHONE NUMBER

KEY PLAN



AREA OF SITE: 8.8 ACRES
TOTAL AREA DISTURBED: 8.8 ACRES
PHASE AREA DISTURBED: 8.8 ACRES

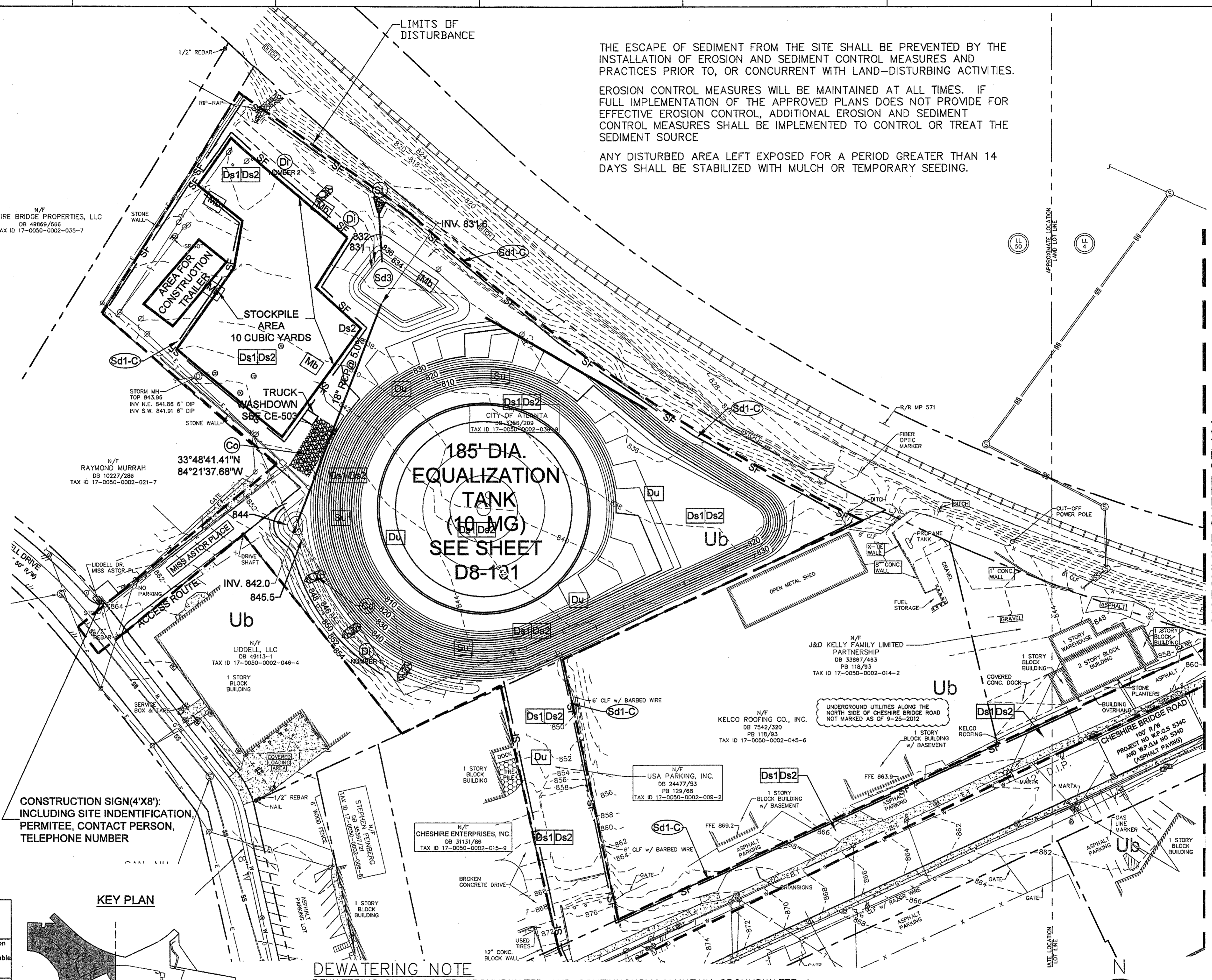
24 HR EMERGENCY CONTACT:
DENNIS PHILLIPS 404-350-9401

LIMITS OF DISTURBANCE

THE ESCAPE OF SEDIMENT FROM THE SITE SHALL BE PREVENTED BY THE INSTALLATION OF EROSION AND SEDIMENT CONTROL MEASURES AND PRACTICES PRIOR TO, OR CONCURRENT WITH LAND-DISTURBING ACTIVITIES.

EROSION CONTROL MEASURES WILL BE MAINTAINED AT ALL TIMES. IF FULL IMPLEMENTATION OF THE APPROVED PLANS DOES NOT PROVIDE FOR EFFECTIVE EROSION CONTROL, ADDITIONAL EROSION AND SEDIMENT CONTROL MEASURES SHALL BE IMPLEMENTED TO CONTROL OR TREAT THE SEDIMENT SOURCE

ANY DISTURBED AREA LEFT EXPOSED FOR A PERIOD GREATER THAN 14 DAYS SHALL BE STABILIZED WITH MULCH OR TEMPORARY SEEDING.



185' DIA. EQUALIZATION TANK (10 MG) SEE SHEET D8-101

DEWATERING NOTE

DEWATERING SHALL LOWER GROUNDWATER AND CONTINUOUSLY MAINTAIN GROUNDWATER A MINIMUM OF 3 FEET BELOW THE DEEPEST EXCAVATIONS AT ALL TIMES. SUBMIT A DEWATERING PLAN PRIOR TO ANY WORK. WHEN DEWATERING, NO SILTED WATER SHALL BE PUMPED DIRECTLY BACK INTO THE STREAM WITHOUT GOING THROUGH A BMP. THE CONTAMINATED WATER SHALL BE PUMPED INTO THE SANITARY SEWER LINE LOCATED AT THE NORTHWEST CORNER OF THE SITE.

GRADING NOTE

GRADING ON THIS PLAN IS SHOWN FOR EROSION CONTROL PURPOSES ONLY. EXCAVATION FOR THE EQUALIZATION TANK TO BE DETERMINED BY CONTRACTOR MEANS AND METHODS. ADDITIONAL SHORING MAY BE NEEDED TO ACCOMPLISH CUT SLOPES.

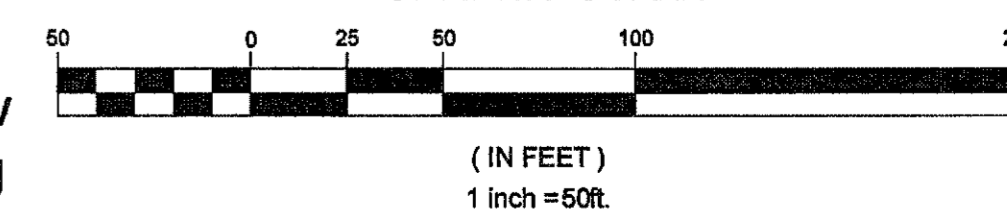
Derek Westfall
GSWCC LEVEL II DESIGN PROFESSIONAL
EXPIRATION DATE: 6-20-2016

0000010475
CERTIFICATION #



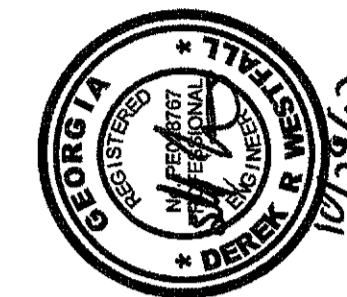
Know what's below
Call before you dig

GRAPHIC SCALE



(IN FEET)
1 inch = 50ft.

MATCHLINE SHEET CE-104



PEACHTREE CREEK SOUTH FORK
RELIEF STORAGE AND PUMPING STATION



CITY OF ATLANTA

DEPARTMENT OF WATERSHED MANAGEMENT

REV	DATE	REVISION DESCRIPTION
0	10/28/12	100 PERCENT BID PACKAGE

THIS LINE IS ONE INCH LONG WHEN PLOTTED FULL SCALE

THIS DRAWING MUST BE USED IN CONJUNCTION WITH THE APPLICABLE OR GOVERNING TECHNICAL SPECIFICATIONS AND OTHER CONTRACT DOCUMENTS.

PROJECT NO: FC-6260

DATE: OCTOBER 2012

RESP PROF: DW DESIGNER: PD CHECKER: TC

SHEET TITLE
CIVIL
00 - GENERAL
EROSION CONTROL PLAN
INTERMEDIATE PHASE A

SHEET NO. CE-103A REV. 0