

F

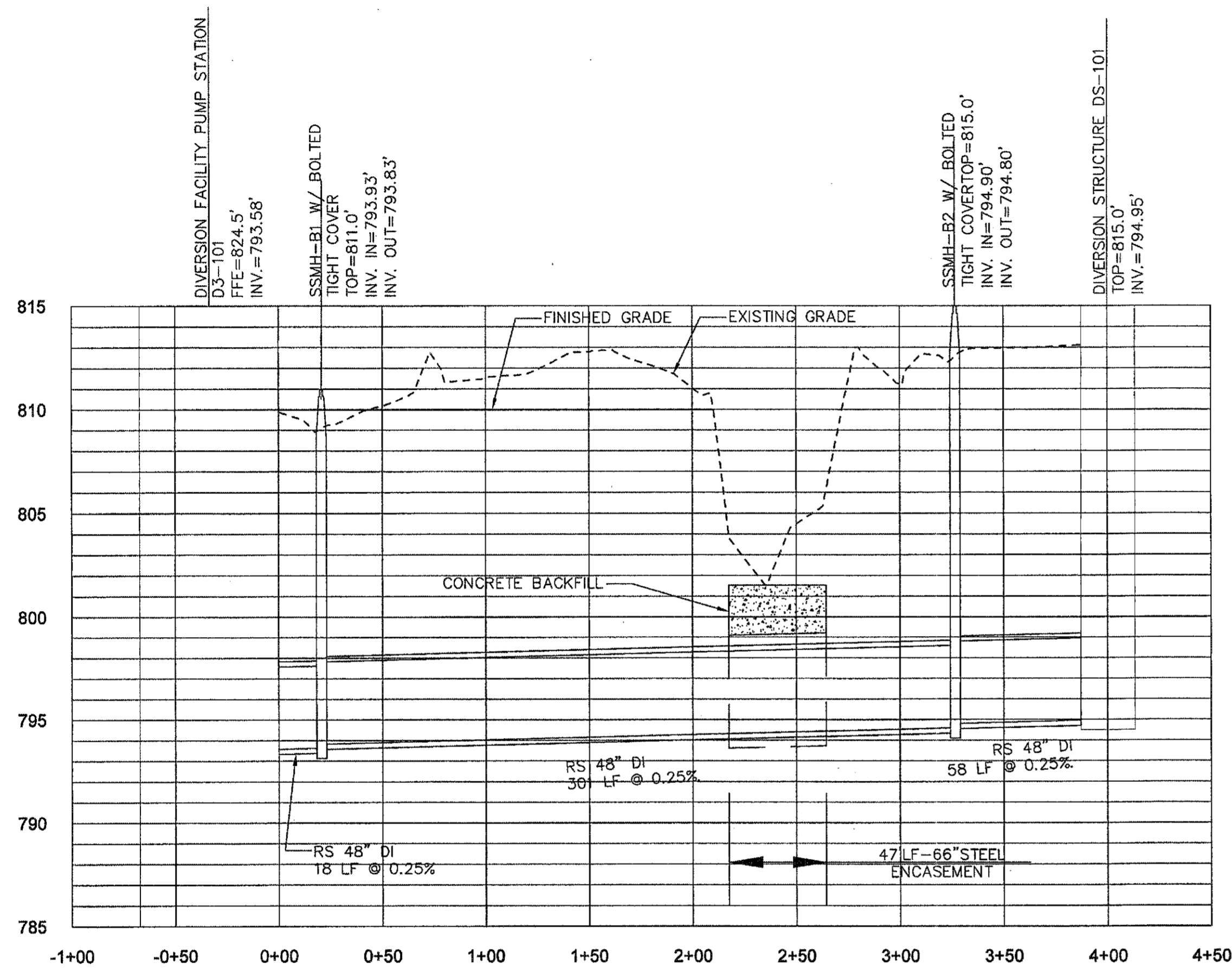
E

D

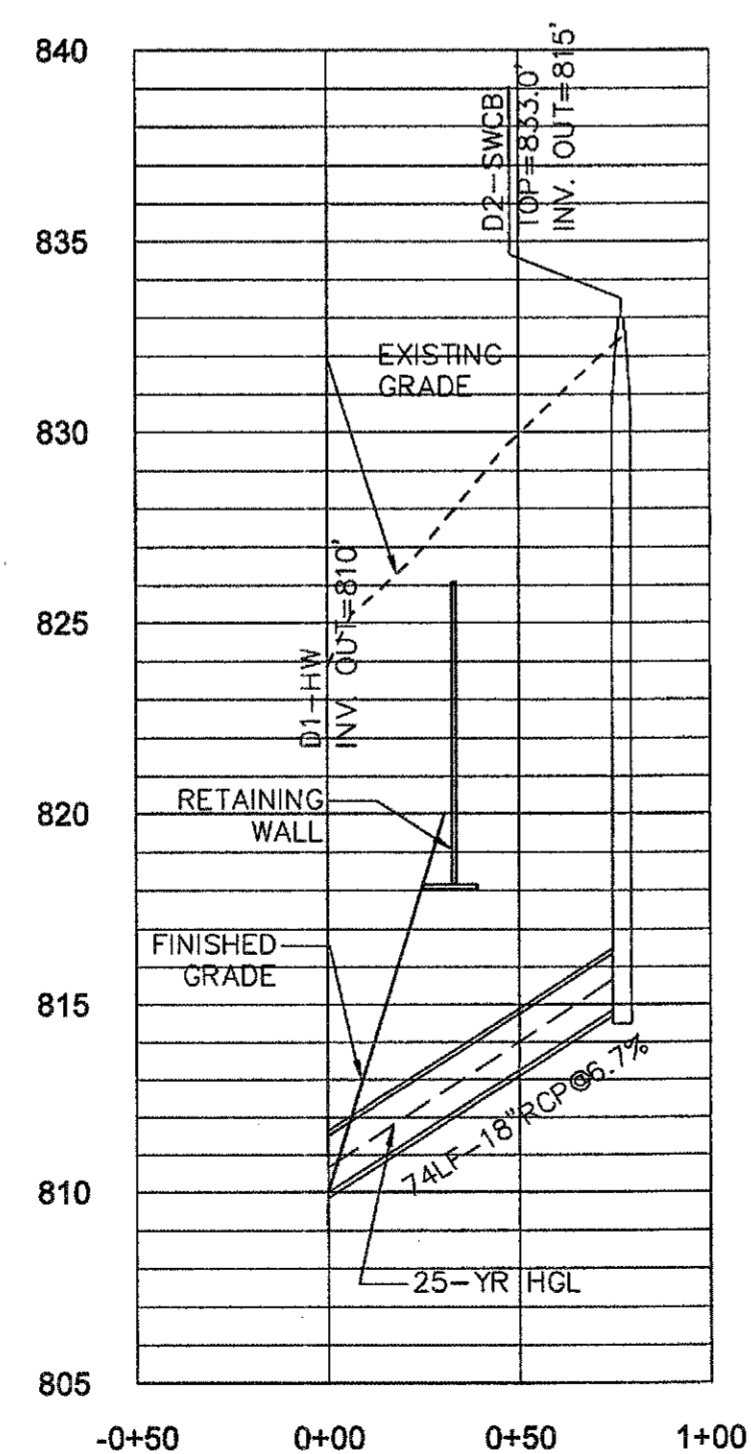
C

B

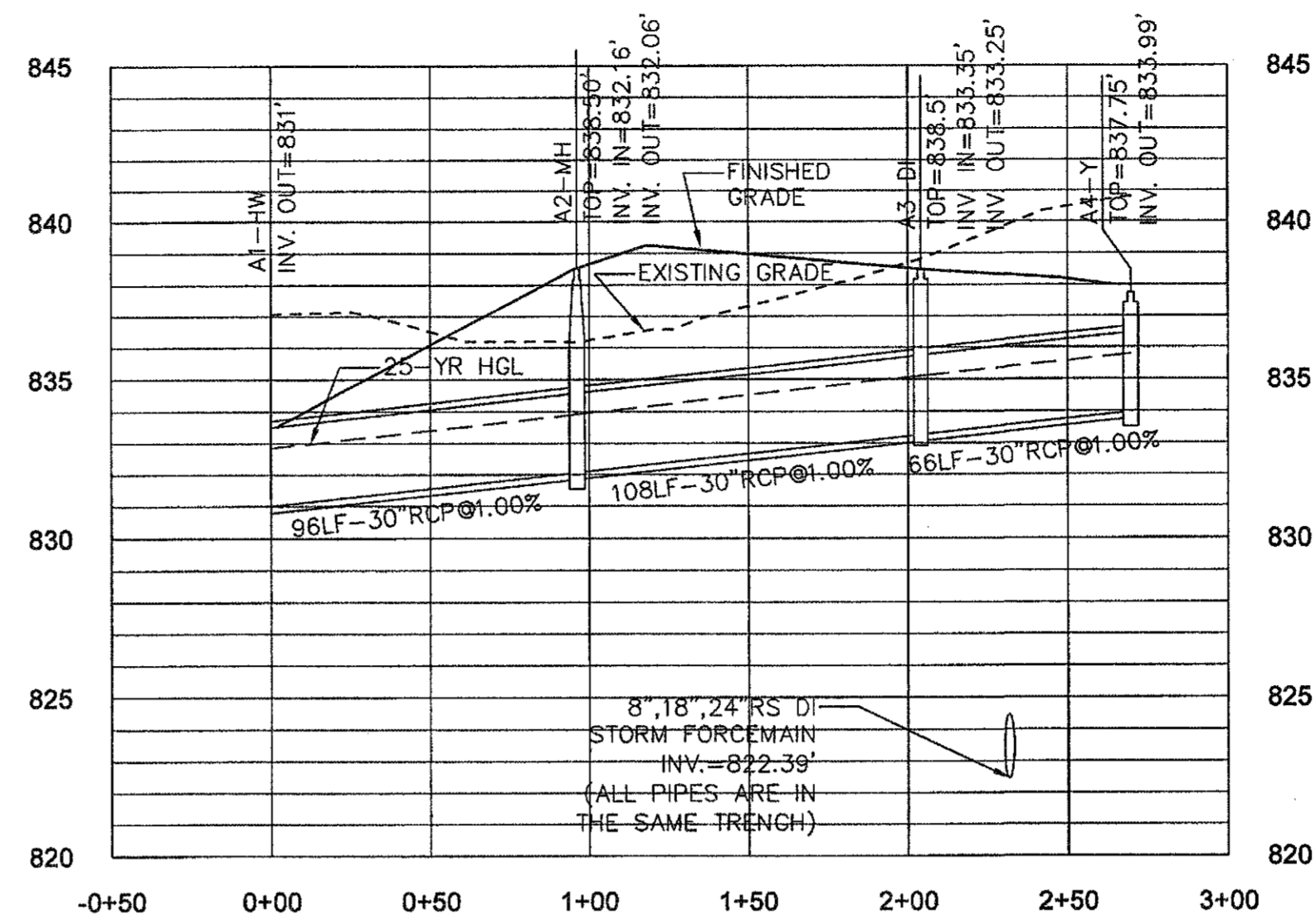
A



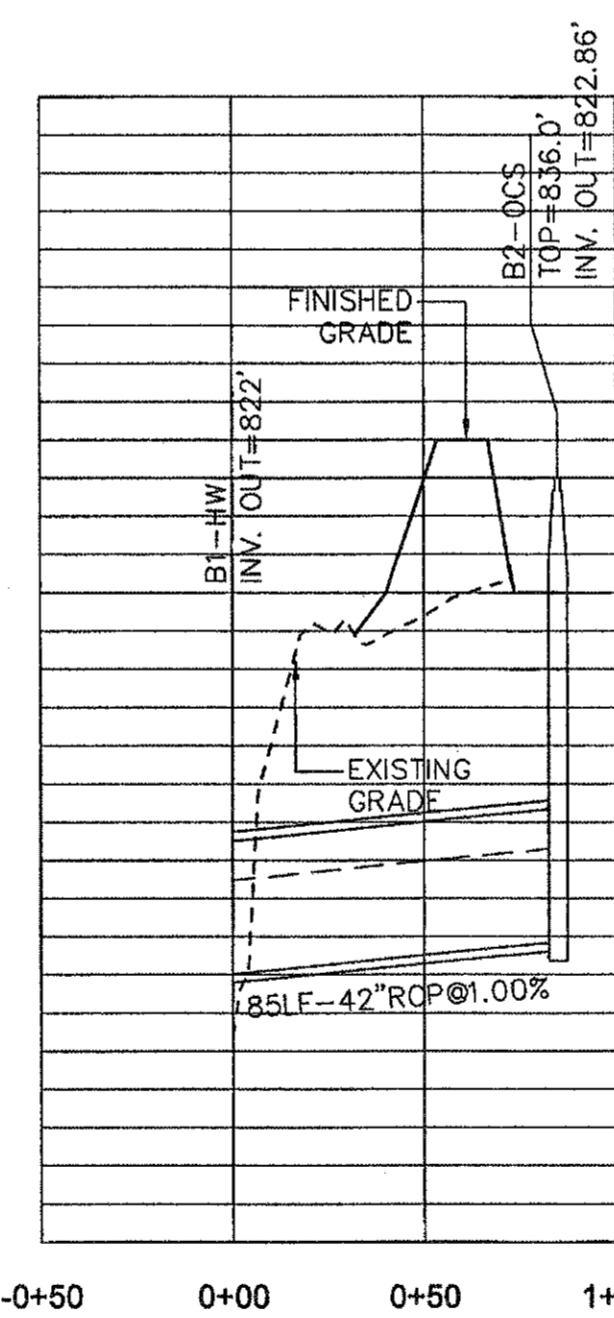
SANITARY SEWER B  
 SCALE: 1" = 50' HORZ  
 SCALE: 1" = 5' VERT



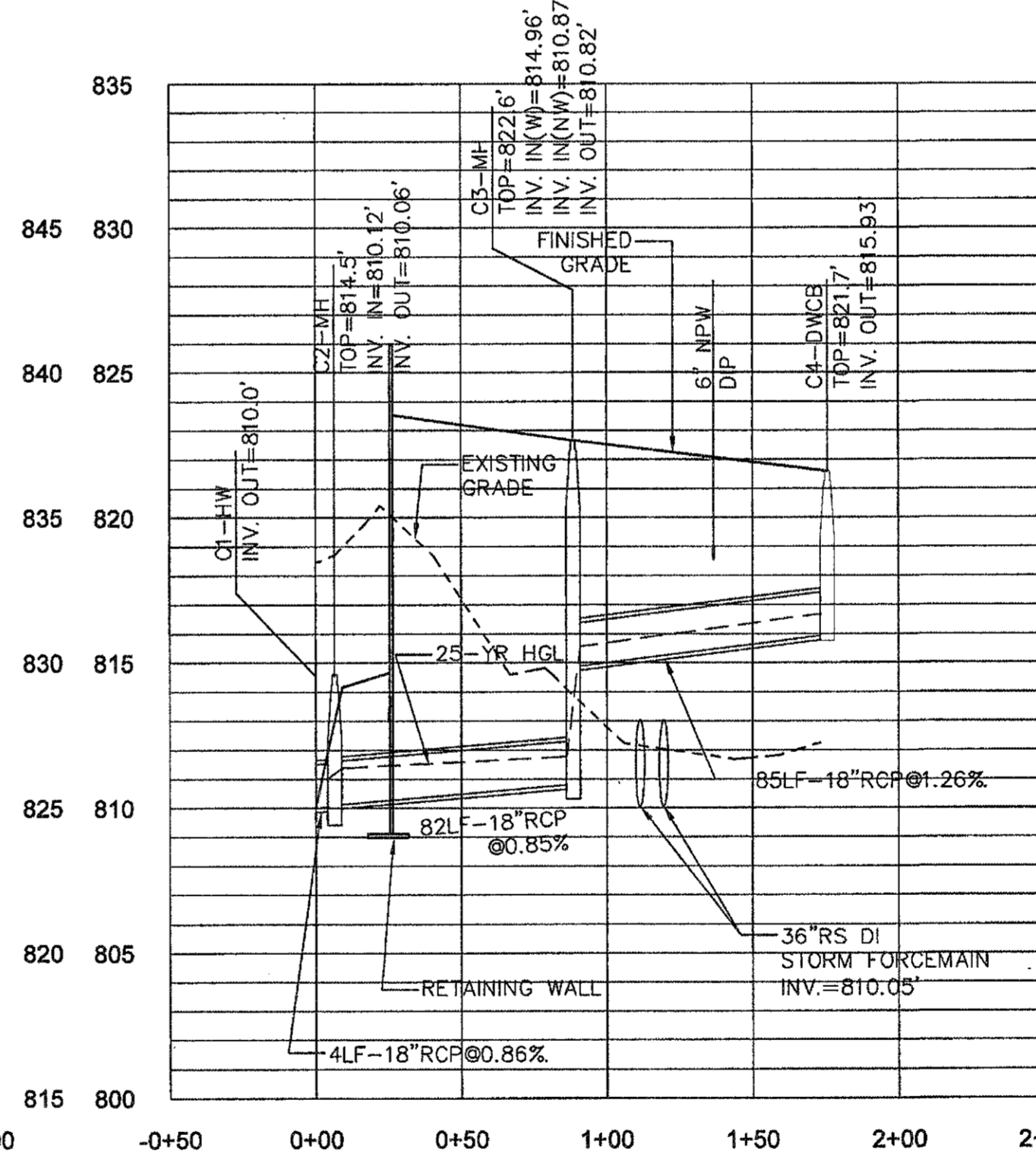
STORMWATER D  
 SCALE: 1" = 50' HORZ



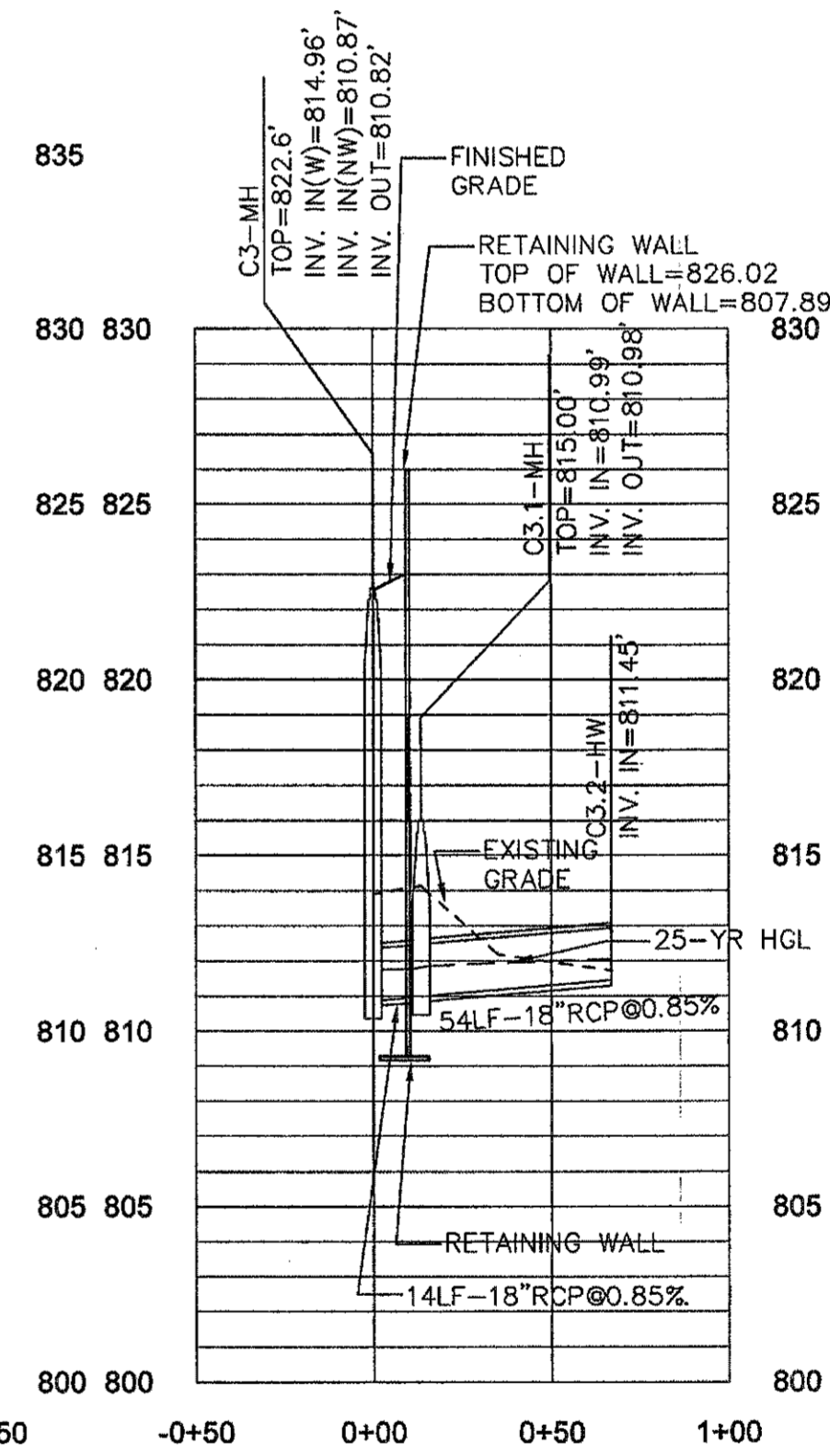
STORMWATER LINE A  
 SCALE: 1" = 50' HORZ  
 SCALE: 1" = 5' VERT



STORMWATER LINE B  
 SCALE: 1" = 50' HORZ  
 SCALE: 1" = 5' VERT



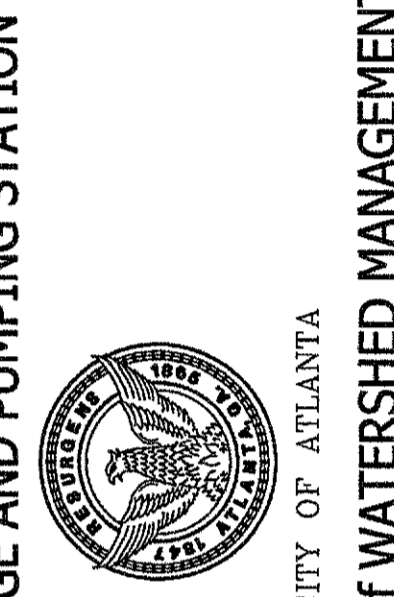
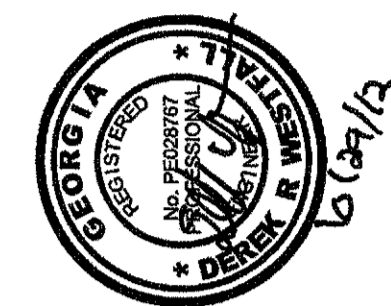
STORMWATER LINE C  
 SCALE: 1" = 50' HORZ  
 SCALE: 1" = 5' VERT



STORMWATER LINE C3-C3.2  
 SCALE: 1" = 50' HORZ  
 SCALE: 1" = 5' VERT

Line ID	25 YR Flow Rate (cfs)	100 YR Flow Rate (cfs)	Line Size (in)	Line Type	Line Length (ft)	Invert Dn (ft)	Invert Up (ft)	Line Slope (%)	25 YR HGL Dn (ft)	25 YR HGL Up (ft)	100 YR HGL Dn (ft)	100 YR HGL Up (ft)	25 YR Vel (ft/s)	100 YR Vel (ft/s)	n-value	Pipe
A1-A2	30.32	36.62	30	Cir	96.00	831.00	832.06	1.00	832.02	832.90	832.02	833.08	7.48	8.61	0.012	
A2-A3	31.14	37.01	30	Cir	108.00	832.16	833.25	1.00	832.90	834.11	833.08	834.28	7.98	8.68	0.012	
A3-A4	29.07	34.5	30	Cir	66.00	833.35	833.99	1.00	834.11	834.79	834.28	834.95	7.54	8.21	0.012	
B1	41.81	53.01	42	Cir	85.00	822.00	822.86	1.00	824.43	824.70	824.43	824.97	8.54	9.44	0.012	
C1-C2	6.12	7.34	18	Cir	4.00	810.00	810.06	0.94	811.03	811.01	811.03	811.10	4.96	2.58	0.012	
C2-C3	6.21	7.43	18	Cir	82.00	810.12	810.82	0.85	811.39	811.77	811.55	811.86	4.57	5.69	0.012	
C3-C4	3.82	4.55	18	Cir	85.00	814.96	815.93	1.26	815.57	816.68	815.66	816.23	4.88	5.64	0.012	
C3-C3.1	2.47	2.95	18	Cir	9.00	810.87	810.98	0.85	811.77	811.76	811.86	811.85	2.45	4.71	0.012	
C3.1-C3.2	2.54	3.01	18	Cir	51.00	810.99	811.45	0.85	811.87	812.06	811.97	812.11	3.07	4.32	0.012	
D1-D2	4.25	5.36	18	Cir	74.00	810.00	815.00	6.70	810.79	815.79	810.85	815.85	4.53	4.82	0.012	

PIPE CHART



PEACHTREE CREEK SOUTH FORK  
 RELIEF STORAGE AND PUMPING STATION  
 DEPARTMENT of WATERSHED MANAGEMENT

REV	DATE	REVISION DESCRIPTION
0	10/29/12	100 PERCENT BID PACKAGE

THIS LINE IS ONE INCH LONG WHEN PLOTTED FULL SCALE  
 THIS DRAWING MUST BE USED IN CONJUNCTION WITH THE APPLICABLE OR GOVERNING TECHNICAL SPECIFICATIONS AND OTHER CONTRACT DOCUMENTS.  
 PROJECT NO: FC-6260  
 DATE: OCTOBER 2012  
 RESP PROF: DW  
 DESIGNER: PD  
 CHECKER: TC  
 SHEET TITLE  
 CIVIL  
 00 - GENERAL  
 MISCELLANEOUS PROFILES  
 SHEET NO. CP-203  
 REV. 0