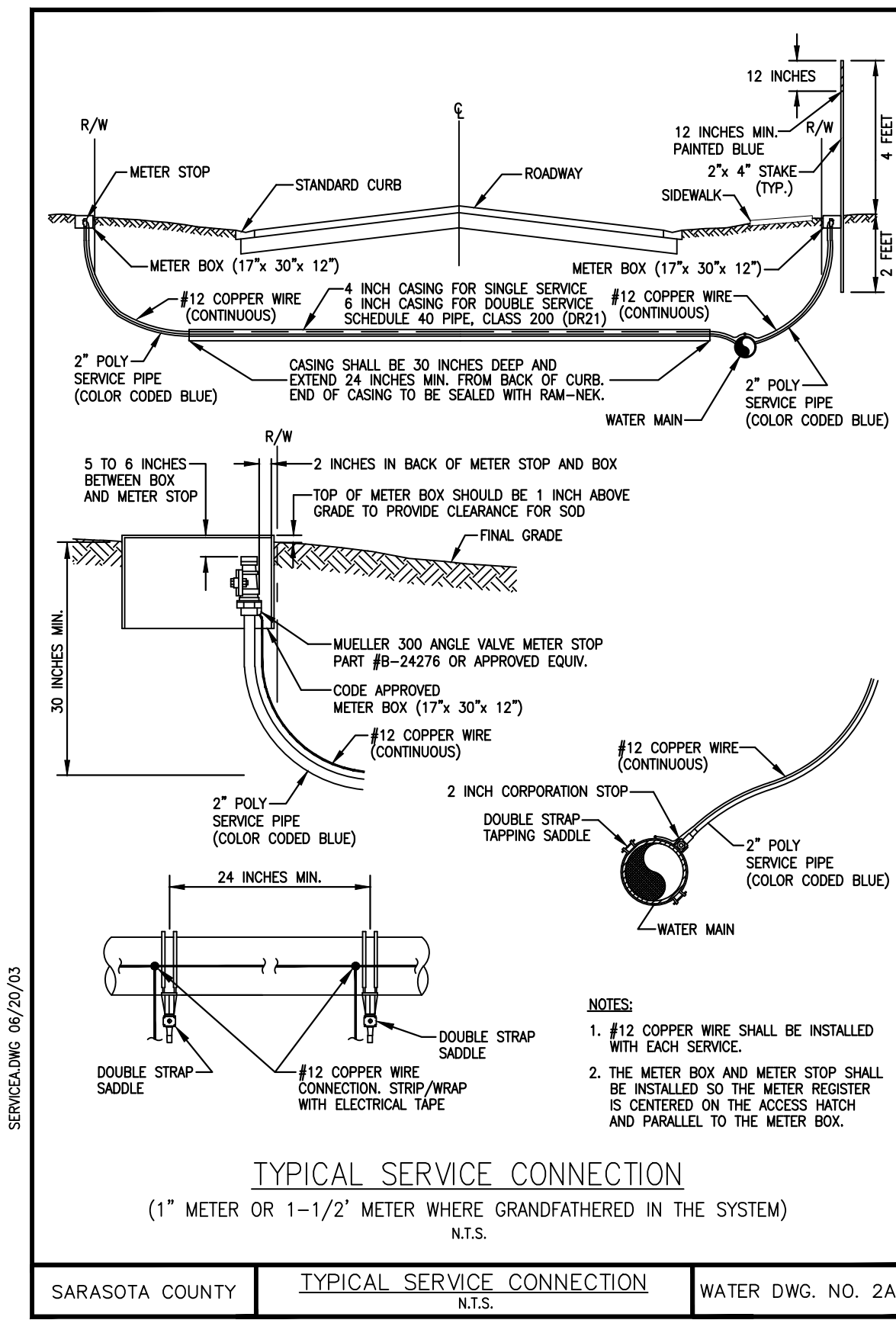
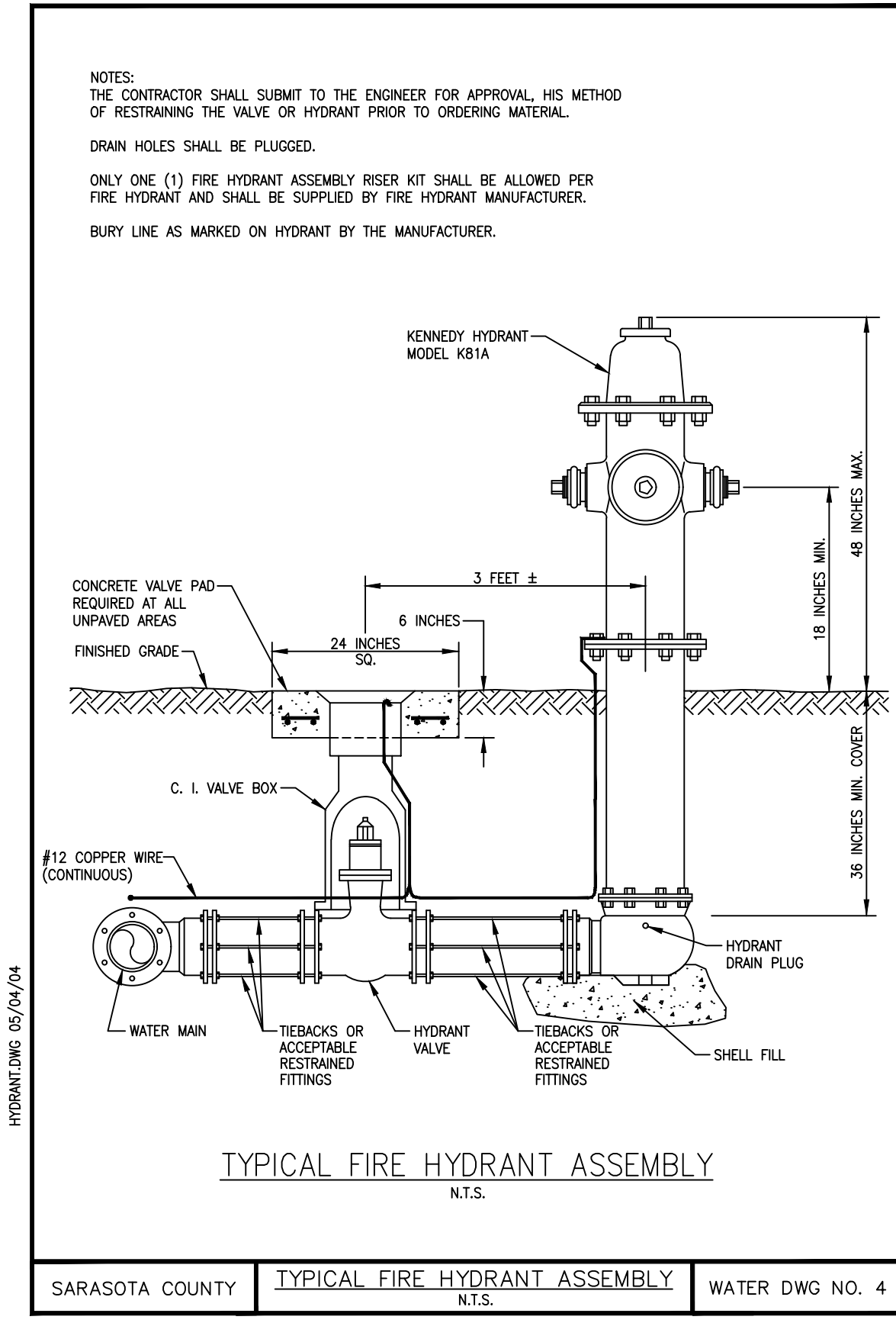
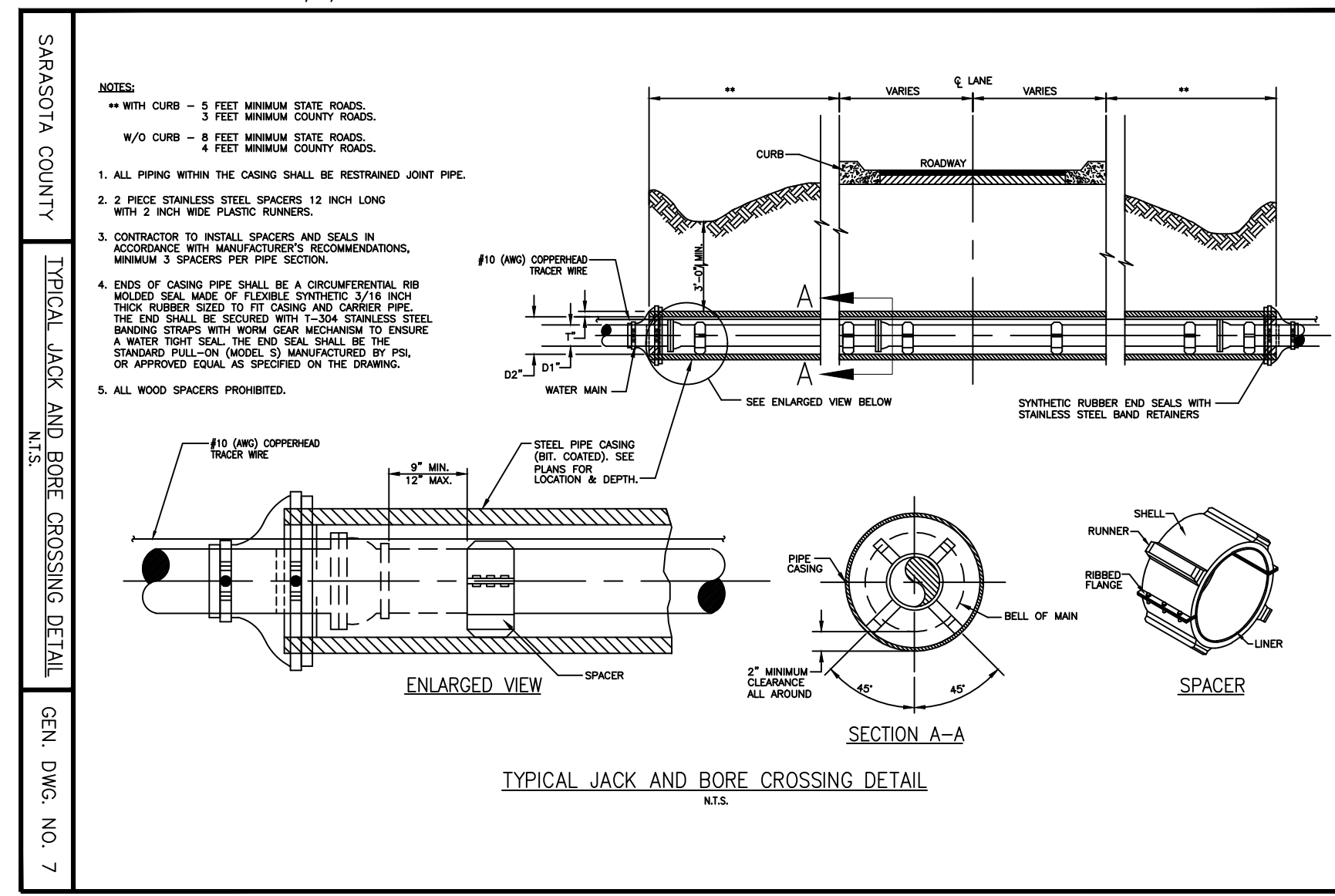
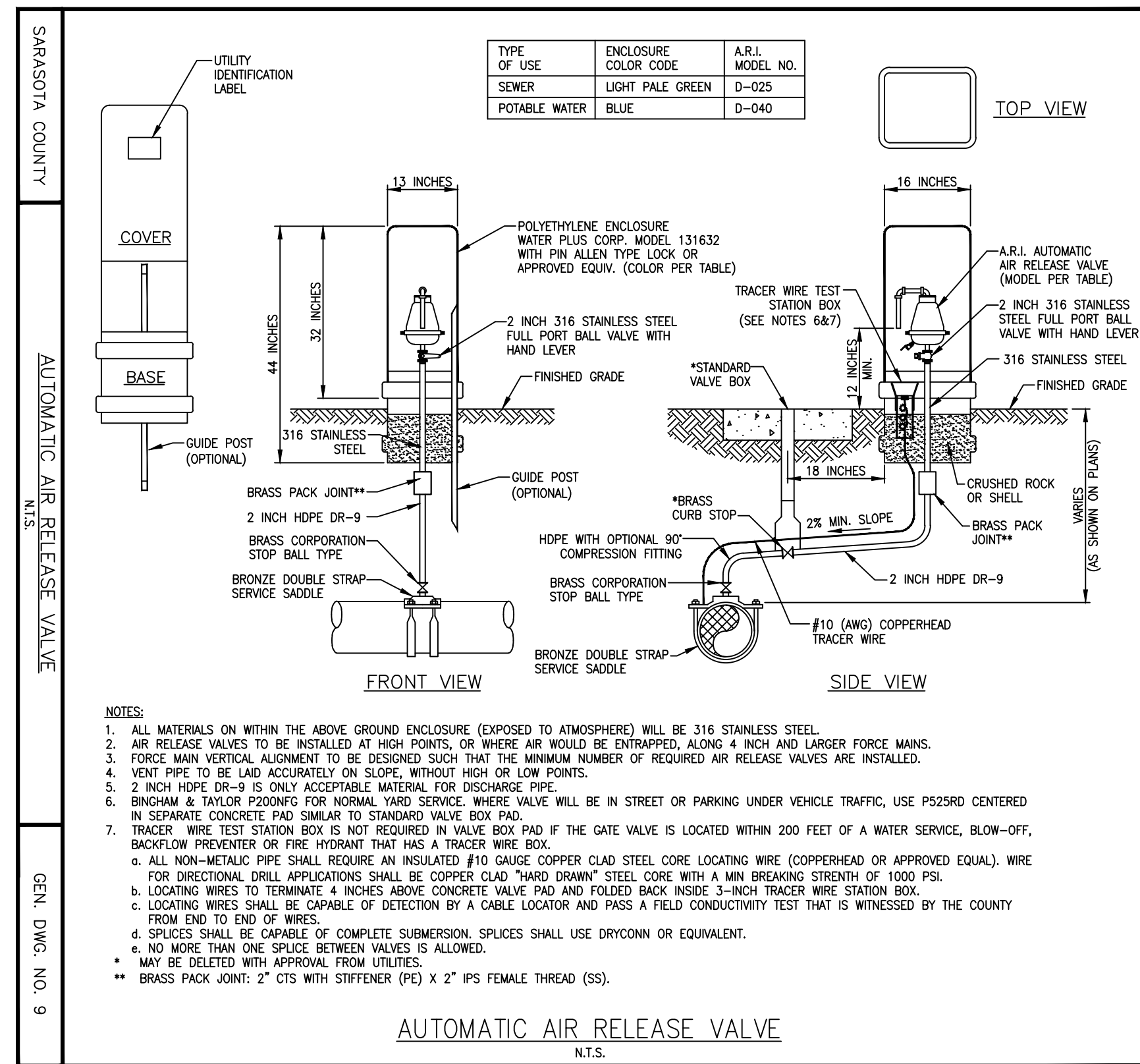
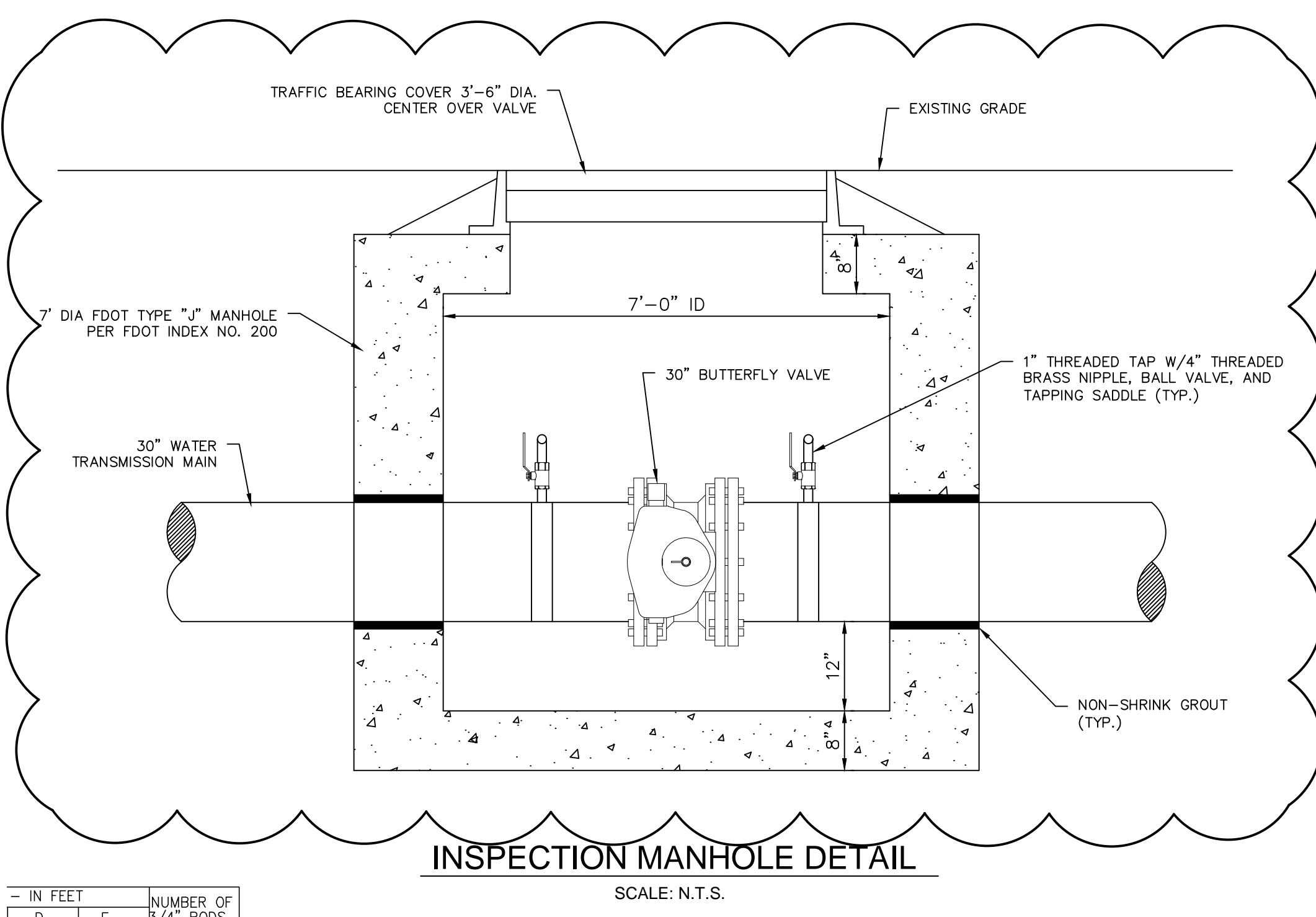
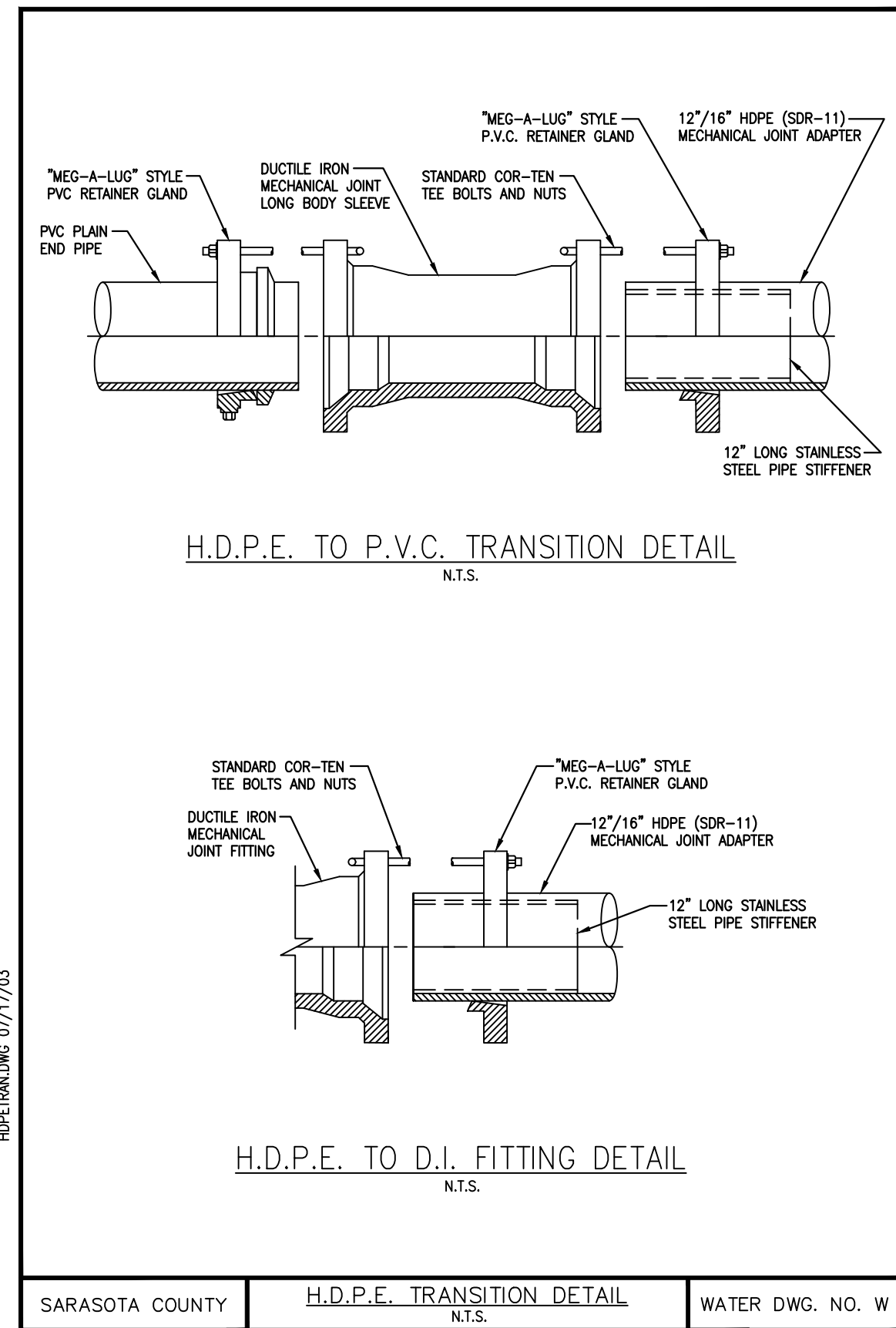


This document, together with the concepts and designs presented herein, is an instrument of service, intended only for the specific purpose and client for which it was prepared. Reuse of any improper reference on this document without written authorization and adaptation by Kimley-Horn and Associates, Inc. shall be without liability to Kimley-Horn and Associates, Inc.



BID ADDENDUM REVISION		9/04/2020	DAL
No.	REVISIONS	DATE	BY

Kimley»Horn

1777 MAIN STREET, SUITE 200, SARASOTA, FL 34236
PHONE: 941-379-7600
WWW.KIMLEY-HORN.COM CA 00000696

KHA PROJECT
DATE 9/4/2020
SCALE
DESIGNED BY JWW
DRAWN BY DMA
CHECKED BY AMM

Sarasota County

**PEACE RIVER INTERCONNECT AND
POTABLE WATER TRANSMISSION MAIN**

SARASOTA COUNTY

LICENSED PROFESSIONAL
ASHLEY M. MIELE, P.E.
FL LICENSE NUMBER 66476
DATE:

CONSTRUCTION DETAILS

SHEET NUMBER
77