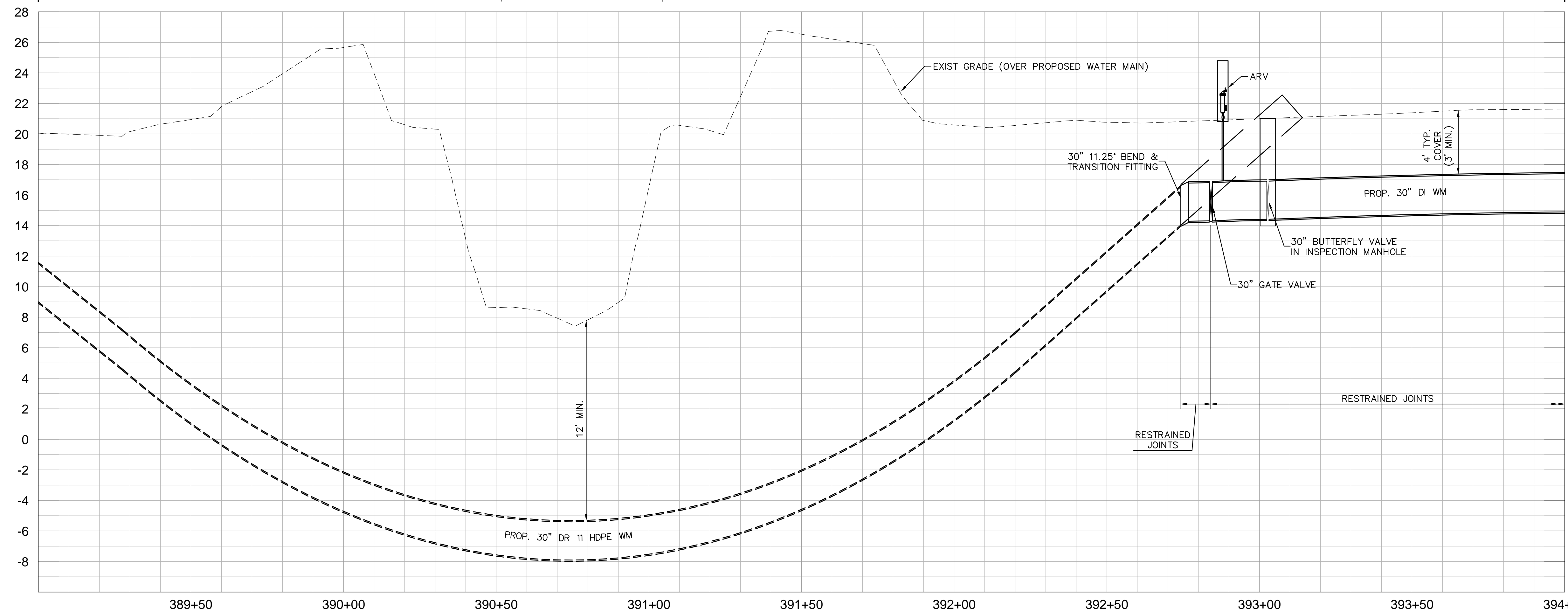
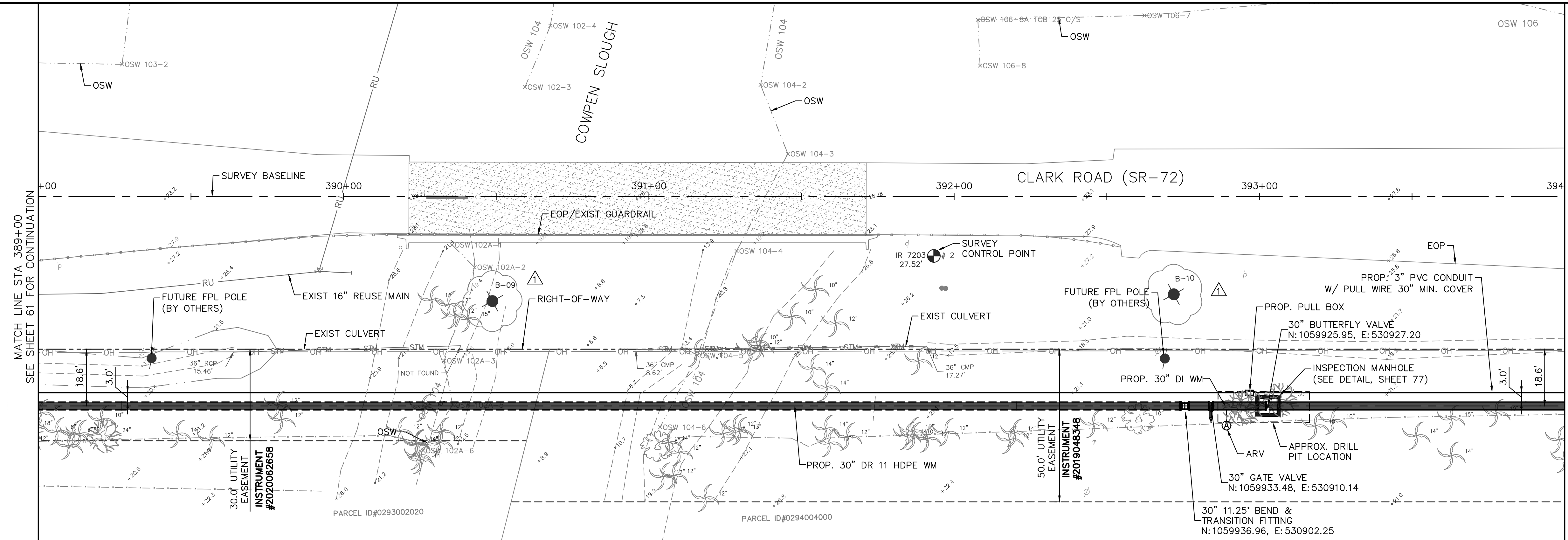
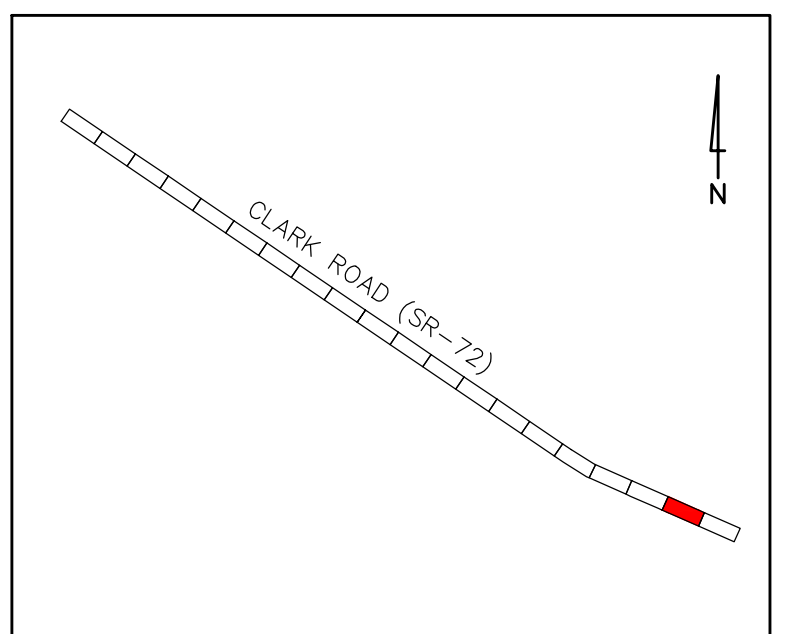
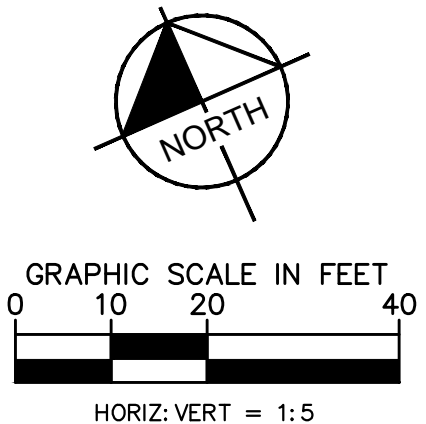


This document, together with the concepts and designs presented herein, is intended only for the specific purpose and client for which it was prepared. Reuse of any information or design on this document without written authorization and adaptation by Kimley-Horn and Associates, Inc. shall be without liability to Kimley-Horn and Associates, Inc.



MATCH LINE STA 389+00  
SEE SHEET 61 FOR CONTINUATION

MATCH LINE STA 394+00  
SEE SHEET 63 FOR CONTINUATION



**KEY MAP**

- LEGEND**
- PROP. ASPHALT MILL/RESURFACE (SEE DETAILS, SHEET 78)
  - PROP. ROAD REPAIR FOR UTILITY INSTALLATION
  - PROP. CONCRETE WALK/CURB RESTORATION

**NOTES:**

1. CONTRACTOR TO FOLLOW RESTRAINED LENGTHS SET IN RESTRAIN LENGTH DETAILS ON SHEET 76. JOINT LENGTHS SHOWN ON PLANS REPRESENT THE MINIMUM DISTANCE OF REQUIRED RESTRAINED JOINTS.
2. CONSTRUCTION DEWATERING SHALL BE CONDUCTED IN ACCORDANCE WITH ALL FEDERAL, STATE, AND LOCAL REQUIREMENTS INCLUDING BUT NOT LIMITED TO CHAPTERS 62-821.300 AND 62-620 OF THE FLORIDA ADMINISTRATIVE CODE (FAC).
3. REFER TO DETAILS ON SHEET 78 FOR COUNTY ROADWAY REPAIR REQUIREMENTS
4. REFER TO DRIVEWAY RESTORATION DETAIL, SHEET 78, FOR COUNTY RESTORATION REQUIREMENTS.
5. AREAS IDENTIFIED FOR MILL/RESURFACE ALONG PROCTOR ROAD TO BE MILLED ONLY, AND SHALL NOT BE RESURFACED AS PART OF THIS PROJECT. SEE 'PROCTOR ROAD REPAIR SECTION', SHEET 78.
6. CONTRACTOR TO COORDINATE WITH FPL FOR SUPPORT OF FPL TRANSMISSION POLES DURING CONSTRUCTION.

**\*NOTES:**

THE ELEVATIONS OF THE UTILITIES MARKED WITH AN ASTERISK (\*) HAVE BEEN ASSUMED ON THE BASIS OF TYPICAL ANTICIPATED SOIL COVERAGE. CONTRACTOR SHALL NOT RELY ON THIS INFORMATION FOR CONSTRUCTION, BUT SHALL BE RESPONSIBLE FOR FIELD LOCATIONS (HORIZONTAL AND VERTICAL) OF ALL UTILITIES CROSSING THE PROPOSED WATER MAIN. CONTRACTOR SHALL INCLUDE IN THE UNIT COST OF THE SUBJECT WATER MAIN CONSTRUCTION, THE COST OF UTILITY ADJUSTMENTS NECESSARY TO ATTAIN DESIGN MINIMUM SEPARATION FOR UTILITIES CONFLICTING WITH THE CONSTRUCTION OF THE PROPOSED WATER MAIN. INTERRUPTIONS OF ANY EXISTING UTILITY SERVICES SHALL BE NOTICED TO AFFECTED CUSTOMERS A MINIMUM OF 48 HOURS IN ADVANCE AND SHALL NOT EXCEED 4 HOURS IN DURATION.

WHERE CONCRETE REPAIRS ARE NECESSARY AND EXPANSION JOINTS ARE PRESENT, CONTRACTOR TO REMOVE AND REPLACE CONCRETE UP TO THE NEXT EXPANSION JOINT; OTHERWISE, REPLACE CONCRETE AS NECESSARY.

**GROUNDWATER / DEWATERING NOTE:**  
THE PRESENCE OF GROUNDWATER SHOULD BE ANTICIPATED ON THIS PROJECT. CONTRACTOR'S BID SHALL INCLUDE CONSIDERATION FOR THIS ISSUE. WHEN PERFORMING GRADING OPERATIONS DURING PERIODS OF WET WEATHER, PROVIDE ADEQUATE DEWATERING, DRAINAGE AND GROUND WATER MANAGEMENT TO CONTROL MOISTURE OF SOILS.

**CONSTRUCTION DRAWINGS**



BID ADDENDUM REVISION	9/02/2020	DAL
No.	REVISIONS	DATE BY

**Kimley»Horn**

1777 MAIN STREET, SUITE 200, SARASOTA, FL 34236  
PHONE: 941-379-7600  
WWW.KIMLEY-HORN.COM CA 00000696

KHA PROJECT  
DATE 9/2/2020  
SCALE  
DESIGNED BY JWW  
DRAWN BY DMA  
CHECKED BY AMM

**Sarasota County**

**PEACE RIVER INTERCONNECT AND POTABLE WATER TRANSMISSION MAIN**

SARASOTA COUNTY

LICENSED PROFESSIONAL  
ASHLEY M. MIELE, P.E.  
FL LICENSE NUMBER 66476

**CLARK ROAD (SR-72)**  
**STA 389+00.00 TO 394+00.00**

SHEET NUMBER  
**62**