

This document, together with the concepts and designs presented herein, is intended only for the specific purpose and client for which it was prepared. Reuse of and improper reliance on this document without written authorization and adaptation by Kimley-Horn and Associates, Inc. shall be without liability to Kimley-Horn and Associates, Inc.

X:\Active Projects\Kimley-Horn\Sarasota County Peace River PS & SWS\_Bidset\Design\02 PID - PROCESS.dwg, 4/24/2020 2:57:29 PM, csmarin

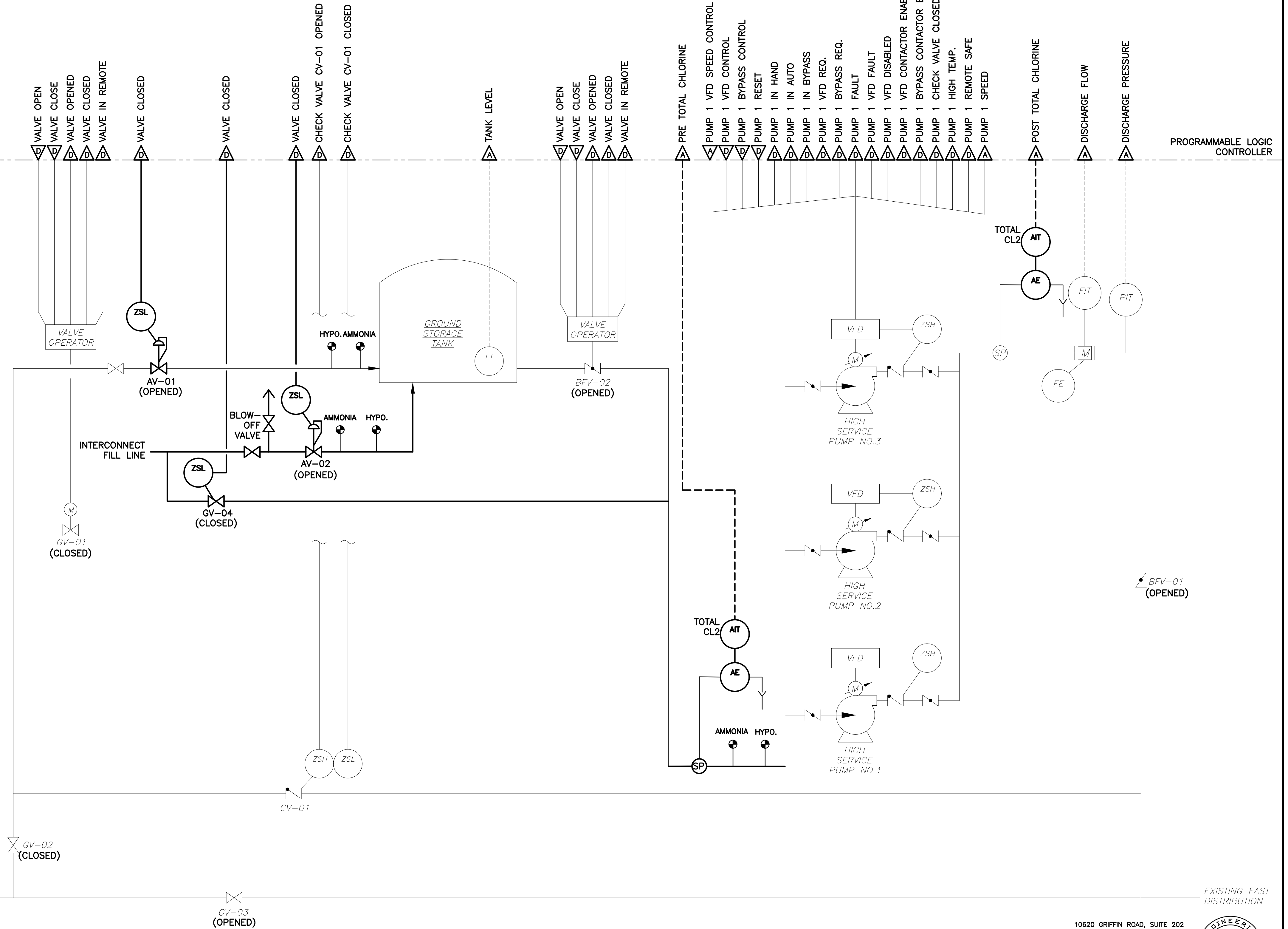
STATION OPERATING MODES						
VALVE TYPE	VALVE #	INTER FILL & PUMP (NORMAL)	INTER BOOST-TANK BYPASS	WEST FILL & PUMP	WEST BOOST-TANK BYPASS	WEST FILL- NO PUMPING
		1	2	3	4	5
AUTOMATIC	AV-01	CLOSED	CLOSED	OPENED	CLOSED	OPENED
AUTOMATIC	AV-02	OPENED	CLOSED	CLOSED	CLOSED	CLOSED
AUTOMATIC	GV-01	CLOSED	CLOSED	CLOSED	OPENED	CLOSED
MANUAL	GV-02	CLOSED	CLOSED	OPENED	OPENED	OPENED
MANUAL	GV-03	OPENED	OPENED	CLOSED	CLOSED	CLOSED
MANUAL	GV-04	CLOSED	OPENED	CLOSED	CLOSED	CLOSED
MANUAL	BFV-01	OPENED	OPENED	OPENED	OPENED	OPENED
AUTOMATIC	BFV-02	OPENED	CLOSED	OPENED	CLOSED	CLOSED
CHECK	CV-01	CLOSED	CLOSED	CLOSED	CLOSED	OPENED

**VALVE INFORMATION TABLE**

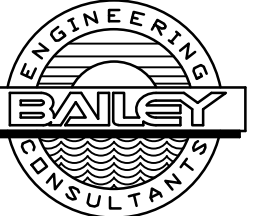
**NOTES:**

- MANUAL VALVE POSITIONS SHOWN FOR INTERCONNECT FILL & PUMP OPERATIONAL MODE 1.
- INDICATES NEW SAMPLE POINT
- INDICATES EXISTING SAMPLE POINT

EXISTING WEST DISTRIBUTION



10620 GRIFFIN ROAD, SUITE 202  
 COOPER CITY, FLORIDA 33328  
 PHONE: (954) 448-7930  
 C.O.A. NO. 6783  
 Stephen E. Bailey, P.E.  
 Florida P.E. No. 42461



**BIDSET SUBMITTAL**

No.	REVISIONS	DATE	BY

**Kimley»Horn**  
 1777 MAIN STREET, SUITE 200, SARASOTA, FL 34236  
 PHONE: 941-379-7600  
 WWW.KIMLEY-HORN.COM CA 00000696

KHA PROJECT	
DATE	4/24/20
SCALE:	AS NOTED
DESIGNED BY	SEB
DRAWN BY	SJL
CHECKED BY	SEB

**Sarasota County**  
**PEACE RIVER INTERCONNECT AND POTABLE WATER TRANSMISSION MAIN**  
 SARASOTA COUNTY FL

LICENSED PROFESSIONAL  
**STEPHEN E. BAILEY, P.E.**  
 42461

**P&ID PROCESS**

SHEET NUMBER  
**I-02**