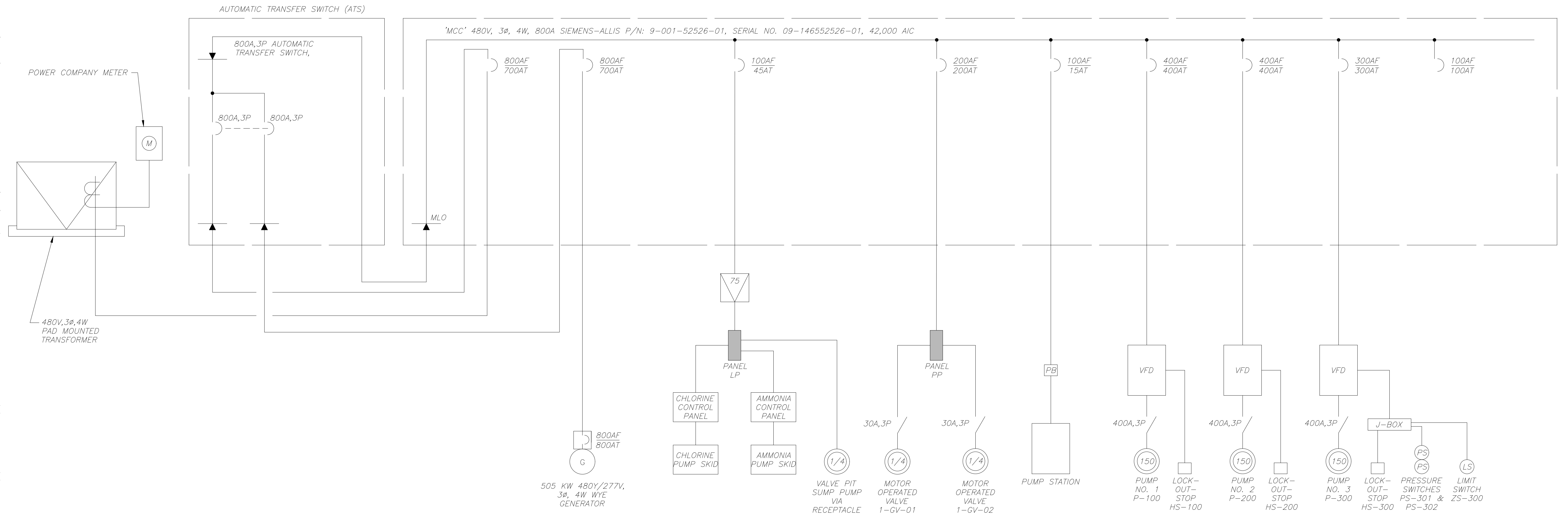


This document, together with the concepts and designs presented herein, is intended only for the specific purpose and client for which it was prepared. Reuse of and improper reliance on this document without written authorization and adaptation by Kimley-Horn and Associates, Inc. shall be without liability to Kimley-Horn and Associates, Inc.



AUTOMATIC TRANSFER SWITCH TERMINALS	SPACE	SPACE	SPARE BREAKER (FUTURE MAIN BLDG.)	MAIN CIRCUIT BREAKER NORMAL POWER
SPACE	SPACE		XFMR	
PUMP NO. 1 VFD FEEDER CIRCUIT BREAKER	PUMP NO. 2 VFD FEEDER CIRCUIT BREAKER	PUMP NO. 3 VFD FEEDER CIRCUIT BREAKER	SPACE	MAIN CIRCUIT BREAKER NORMAL POWER
	PANEL "PP" FEEDER BREAKER		PUMP STATION	

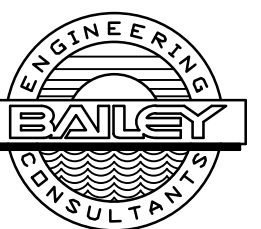
EXISTING MOTOR CONTROL CENTER 'MCC' FRONT VIEW

SCALE: N.T.S.

EXISTING MOTOR CONTROL CENTER 'MCC' SINGLE LINE DIAGRAM

* THIS SHEET PROVIDED FOR INFORMATION PURPOSES ONLY

10620 GRIFFIN ROAD, SUITE 202
COOPER CITY, FLORIDA 33328
PHONE: (954) 448-7930
C.O.A. NO. 6783
Stephen E. Bailey, P.E.
Florida P.E. No. 42461



BIDSET SUBMITTAL

No.	REVISIONS	DATE	BY

Kimley»Horn

1777 MAIN STREET, SUITE 200, SARASOTA, FL 34236
PHONE: 941-379-7600
WWW.KIMLEY-HORN.COM CA 00000696

KHA PROJECT
DATE 4/24/20
SCALE: AS NOTED
DESIGNED BY SEB
DRAWN BY SJL
CHECKED BY SEB

Sarasota County

PEACE RIVER INTERCONNECT AND POTABLE WATER TRANSMISSION MAIN
SARASOTA COUNTY

LICENSED PROFESSIONAL
STEPHEN E. BAILEY, P.E.
42461
FL DATE:

EXISTING MCC SINGLE LINE DIAGRAM

SHEET NUMBER
E-03

X:\Active Projects\Kimley-Horn\Sarasota County Peace River PS & SWS_Bidset\Design\SSD.dwg 4/24/2020 2:56:49 PM dmain