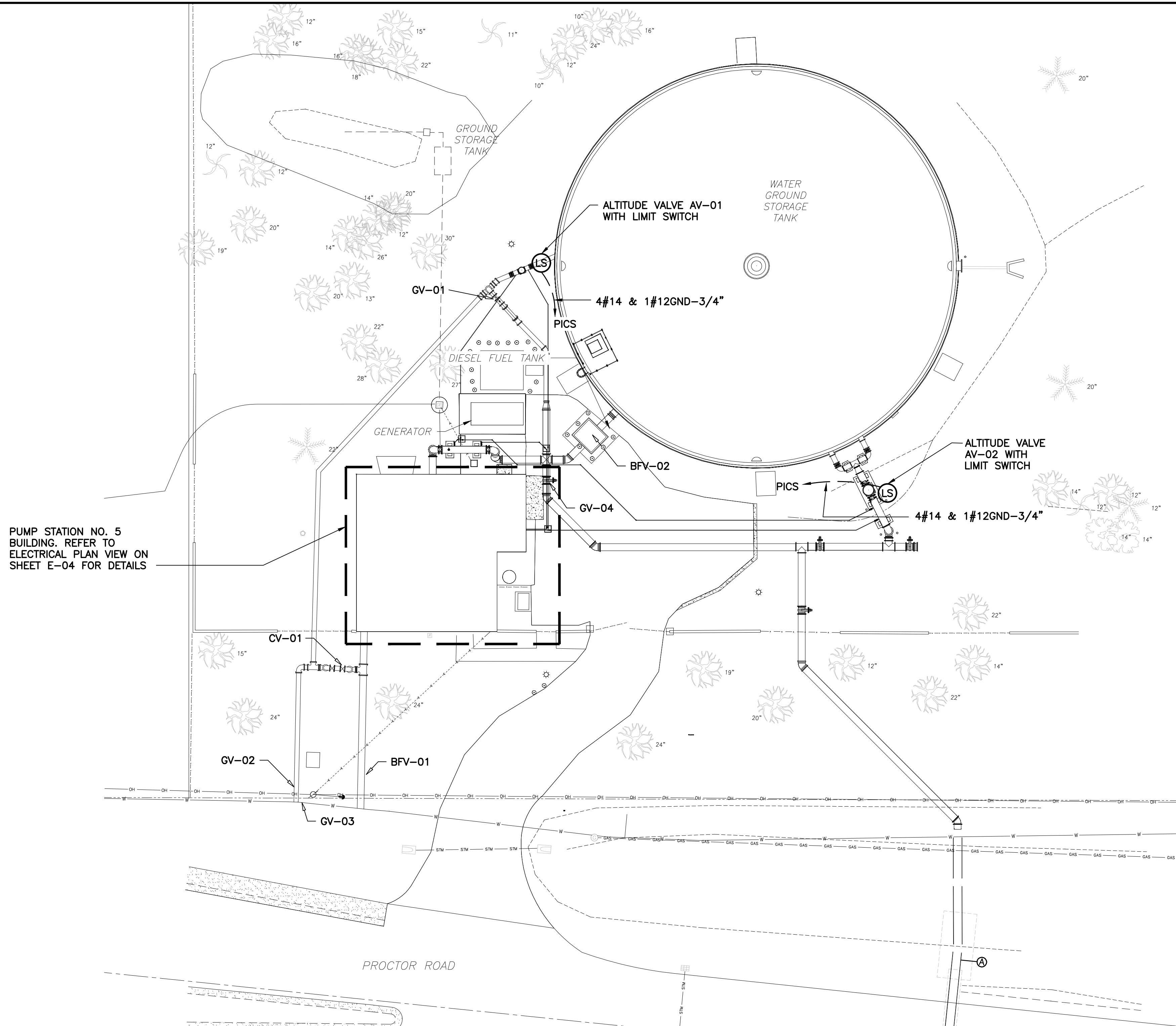
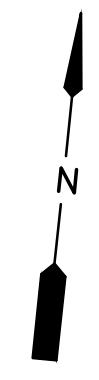


This document, together with the concepts and designs presented herein, is intended only for the specific purpose and client for which it was prepared. Reuse of and improper reliance on this document without written authorization and approval by Kimley-Horn and Associates, Inc. shall be without liability to Kimley-Horn and Associates, Inc.



PUMP STATION NO. 5 BUILDING. REFER TO ELECTRICAL PLAN VIEW ON SHEET E-04 FOR DETAILS

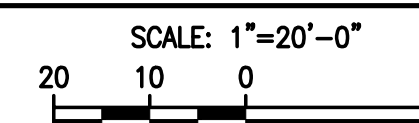


STATION OPERATING MODES						
VALVE TYPE	VALVE #	INTER	INTER	WEST	WEST	WEST
		FILL & PUMP (NORMAL)	BOOST-TANK BYPASS	FILL & PUMP	BOOST-TANK BYPASS	FILL- NO PUMPING
		1	2	3	4	5
AUTOMATIC	AV-01	CLOSED	CLOSED	OPENED	CLOSED	OPENED
AUTOMATIC	AV-02	OPENED	CLOSED	CLOSED	CLOSED	CLOSED
AUTOMATIC	GV-01	CLOSED	CLOSED	CLOSED	OPENED	CLOSED
MANUAL	GV-02	CLOSED	CLOSED	OPENED	OPENED	OPENED
MANUAL	GV-03	OPENED	OPENED	CLOSED	CLOSED	CLOSED
MANUAL	GV-04	CLOSED	OPENED	CLOSED	CLOSED	CLOSED
MANUAL	BFV-01	OPENED	OPENED	OPENED	OPENED	OPENED
AUTOMATIC	BFV-02	OPENED	CLOSED	OPENED	CLOSED	CLOSED
CHECK	CV-01	CLOSED	CLOSED	CLOSED	CLOSED	OPENED

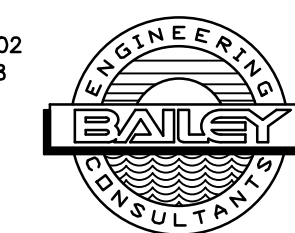
VALVE INFORMATION TABLE

SITE ADDRESS
5949 PROCTOR ROAD
SARASOTA, FL 34233

PUMP STATION ELECTRICAL SITE PLAN



10620 GRIFFIN ROAD, SUITE 202
COOPER CITY, FLORIDA 33328
PHONE: (954) 448-7930
C.O.A. NO. 6783
Stephen E. Bailey, P.E.
Florida P.E. No. 42461



BIDSET SUBMITTAL

No.	REVISIONS	DATE	BY

Kimley»Horn

1777 MAIN STREET, SUITE 200, SARASOTA, FL 34236
PHONE: 941-379-7600
WWW.KIMLEY-HORN.COM CA 00000696

KHA PROJECT
DATE 4/24/20
SCALE: AS NOTED
DESIGNED BY SEB
DRAWN BY SJL
CHECKED BY SEB

Sarasota County

PEACE RIVER INTERCONNECT AND POTABLE WATER TRANSMISSION MAIN

SARASOTA COUNTY

LICENSED PROFESSIONAL

STEPHEN E. BAILEY, P.E.

42461

FL DATE:

PUMP STATION ELECTRICAL SITE PLAN

SHEET NUMBER

E-02

X:\Active Projects\Kimley-Horn\Sarasota County Peace River PS 5 5105_Bidset\Design\Site Plan.dwg, 4/24/2020 2:56:34 PM, dbratin