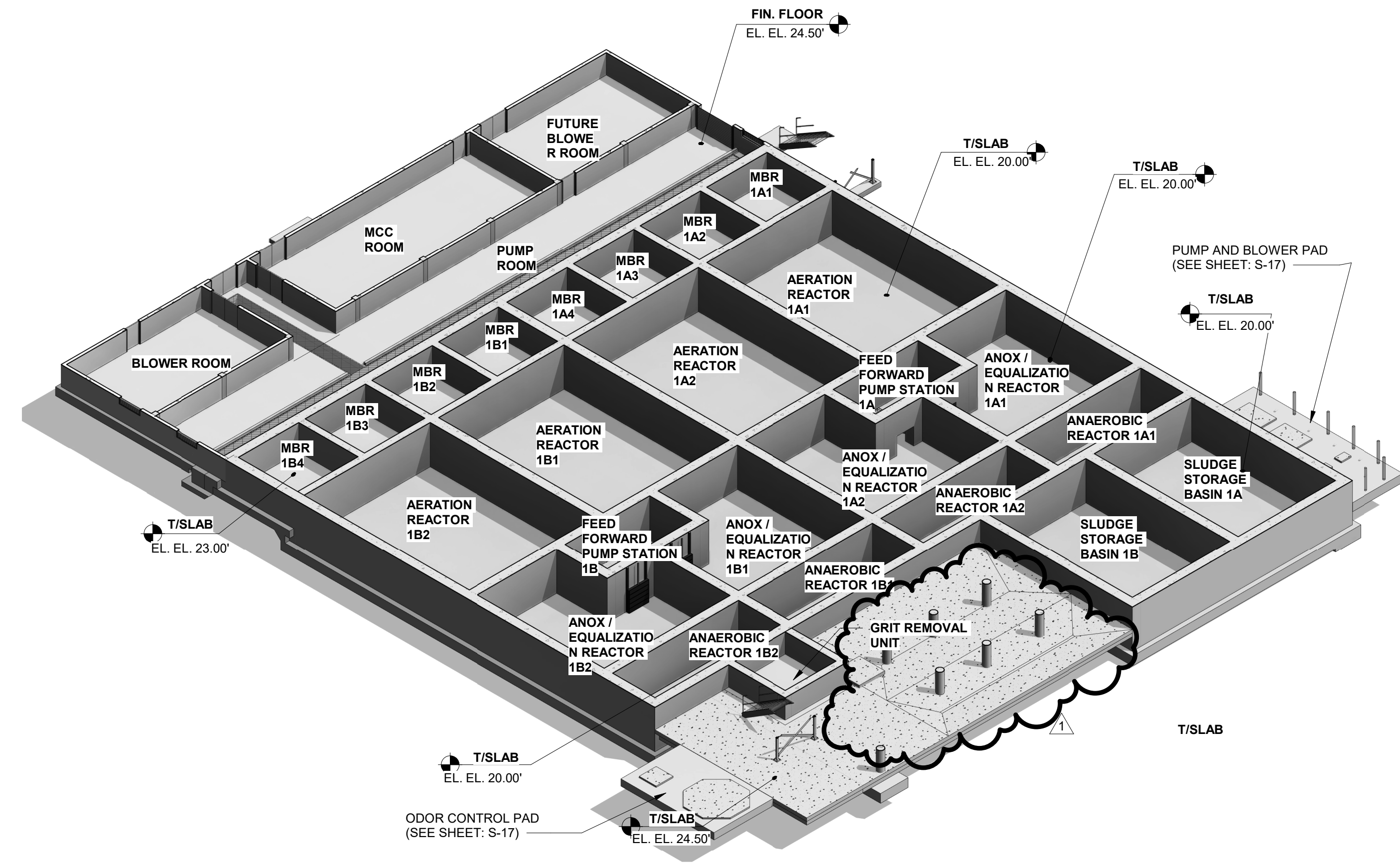
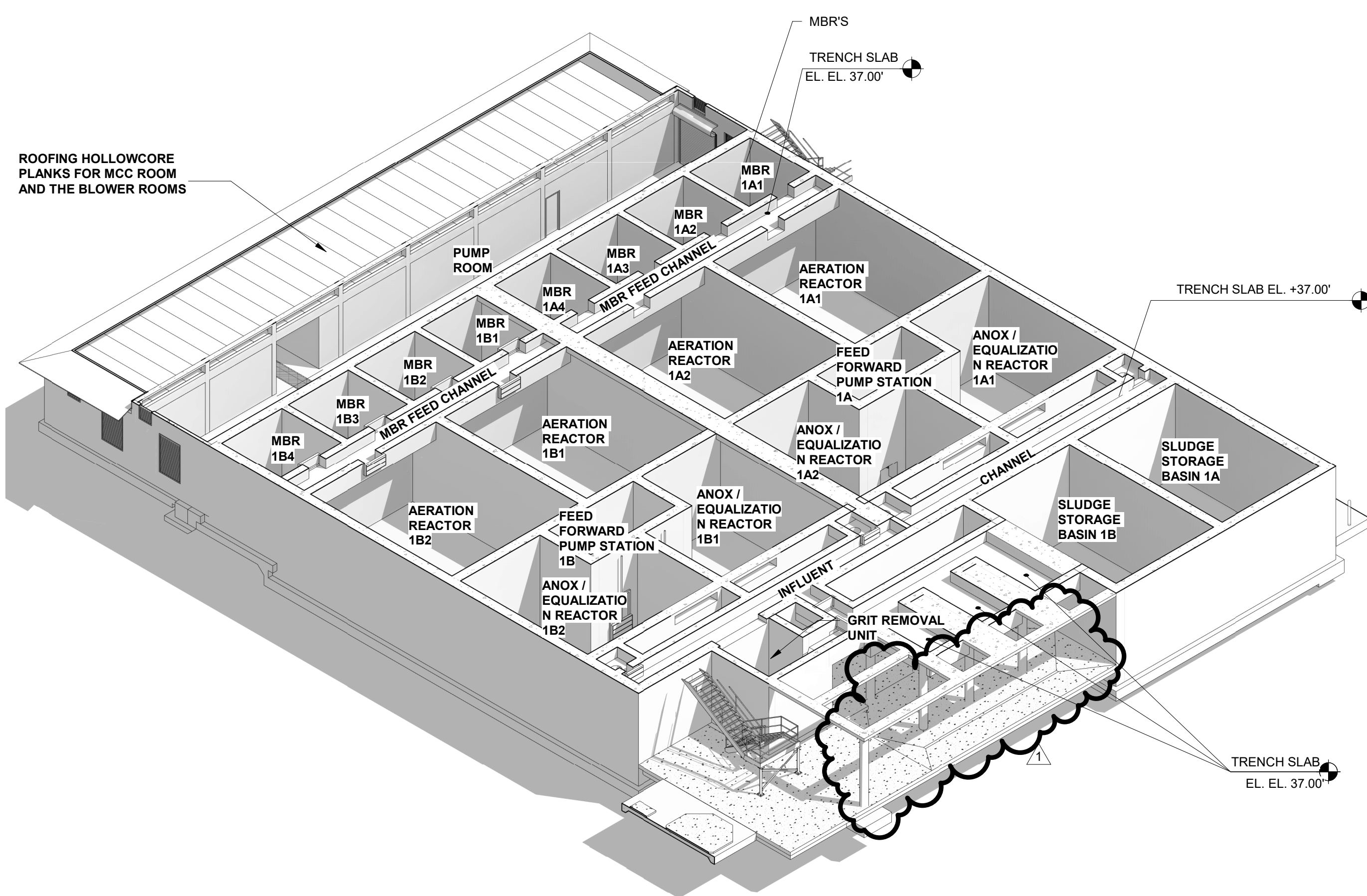


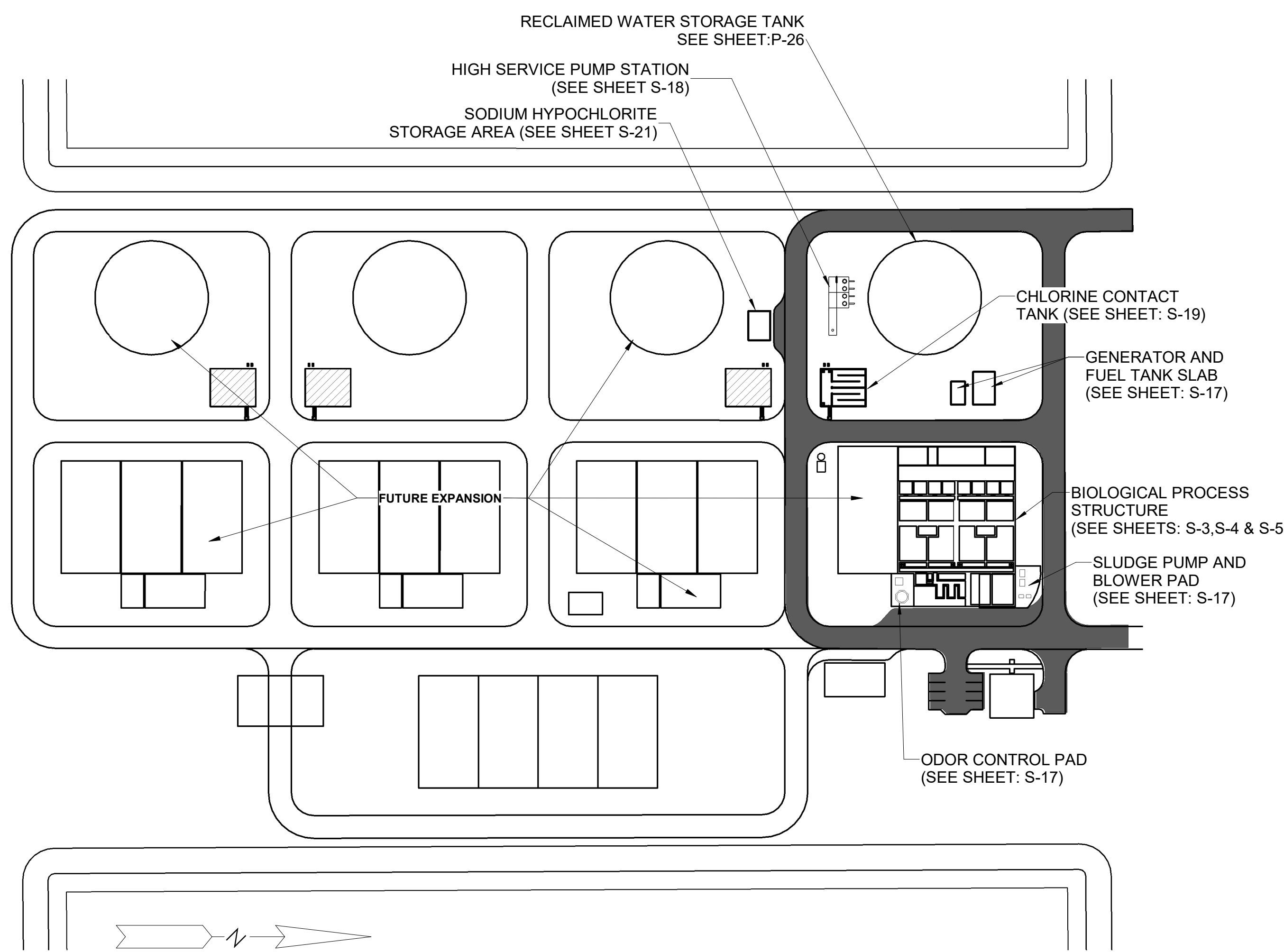
2 ISOMETRIC VIEW - UPPER LEVEL (SEE SHEET S-5)  
SCALE: NONE



1 ISOMETRIC VIEW - BOTTOM LEVEL (SEE SHEET S-3)  
SCALE: NONE



3 ISOMETRIC VIEW - INTERMEDIATE LEVEL (SEE SHEET S-4)  
SCALE: NONE



PROJECT KEY PLAN

REV#	DATE	DESCRIPTION	BY
A	01/12/18	30% PLANS	JKW
B	03/23/18	60% PLANS	JKW
C	05/25/18	90% PLANS	JKW
D	07/20/18	90% PLANS RESUBMITTAL	JKW
E	09-07-18	FOR BID	JKW
1	08-07-20	ADDENDUM #3	JKW

3790 Dale Highway NE, Suite D  
Palm Bay, FL 32909  
www.wadetrims.com  
Certificate of Authorization No.: 3952



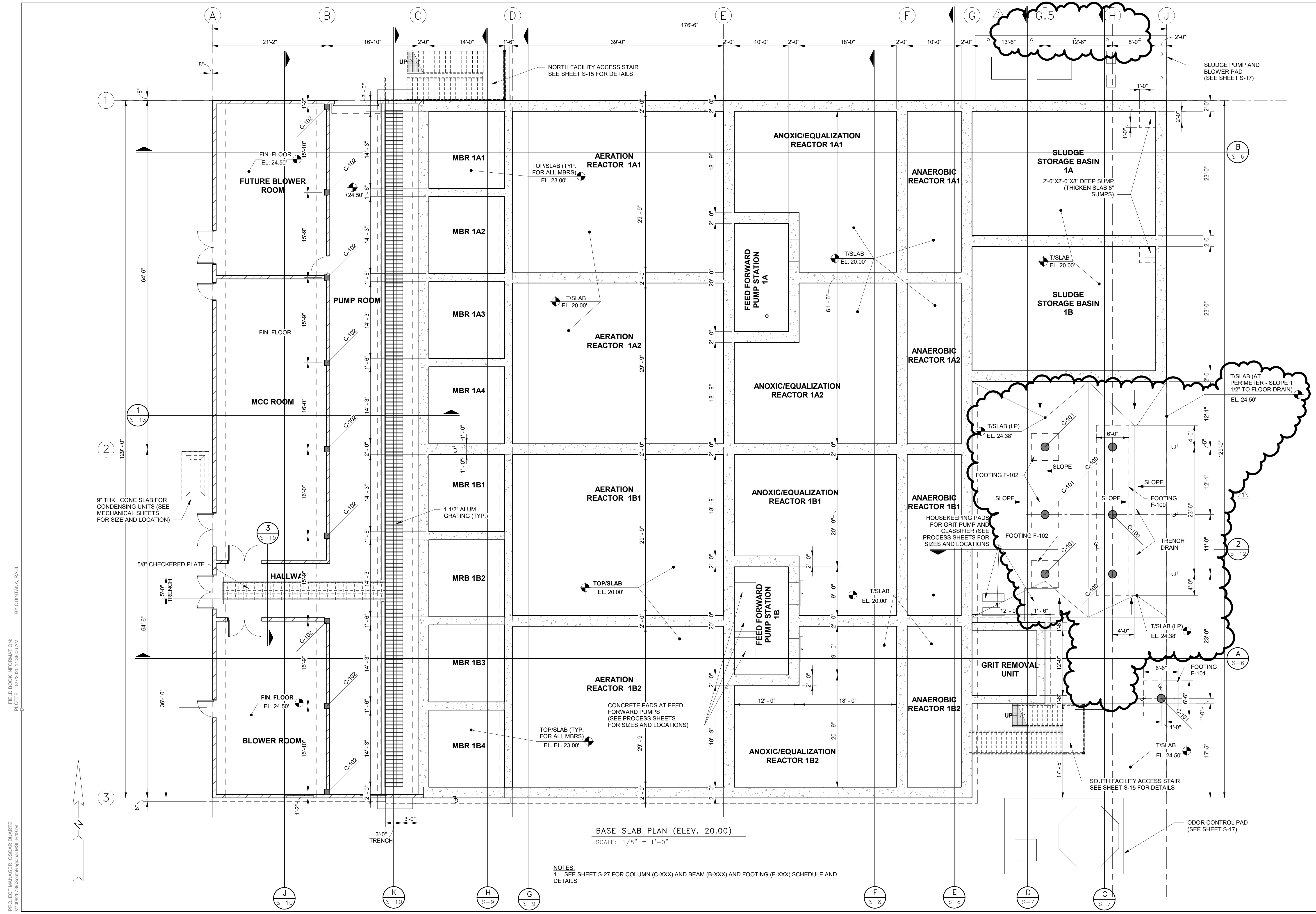
CITY OF PALM BAY, FLORIDA  
PALM BAY SOUTH REGIONAL  
WATER RECLAMATION FACILITY  
BIOLOGICAL PROCESS STRUCTURE  
STRUCTURES KEY PLAN

JAMES K. WHITE, P.E.  
FLORIDA LICENSE NO. 11068

JOB NO. PBU2123-01L

SHEET S-2

PROJECT MANAGER: OSCAR DUARTE  
P.000070@southregionalfla.com  
FIELD BOOK INFORMATION:  
PLOT: 1872625 1138165 24H  
BY: QUINTANA, RAUL



BASE SLAB PLAN (ELEV. 20.00)  
SCALE: 1/8" = 1'-0"

NOTES:  
1. SEE SHEET S-27 FOR COLUMN (C-XXX) AND BEAM (B-XXX) AND FOOTING (F-XXX) SCHEDULE AND DETAILS

REV#	DATE	DESCRIPTION	BY
A	01/12/18	30% PLANS	JKW
B	03/23/18	60% PLANS	JKW
C	05/25/18	90% PLANS	JKW
D	07/20/18	90% PLANS RESUBMITTAL	JKW
E	09/07/18	FOR BID	JKW
1	08-07-20	ADDENDUM #3	JKW

3790 Dale Highway NE, Suite D  
Palm Bay, FL 32909  
www.wadetrim.com  
Certificate of Authorization No. 3952

CITY OF PALM BAY, FLORIDA  
PALM BAY SOUTH REGIONAL  
WATER RECLAMATION FACILITY  
BIOLOGICAL PROCESS STRUCTURE BASE  
SLAB PLAN LOWER (ELEV 20.00)

JAMES K. WHITE, P.E.  
FLORIDA LICENSE NO. 11068

JOB NO.  
**PBU2123-01L**

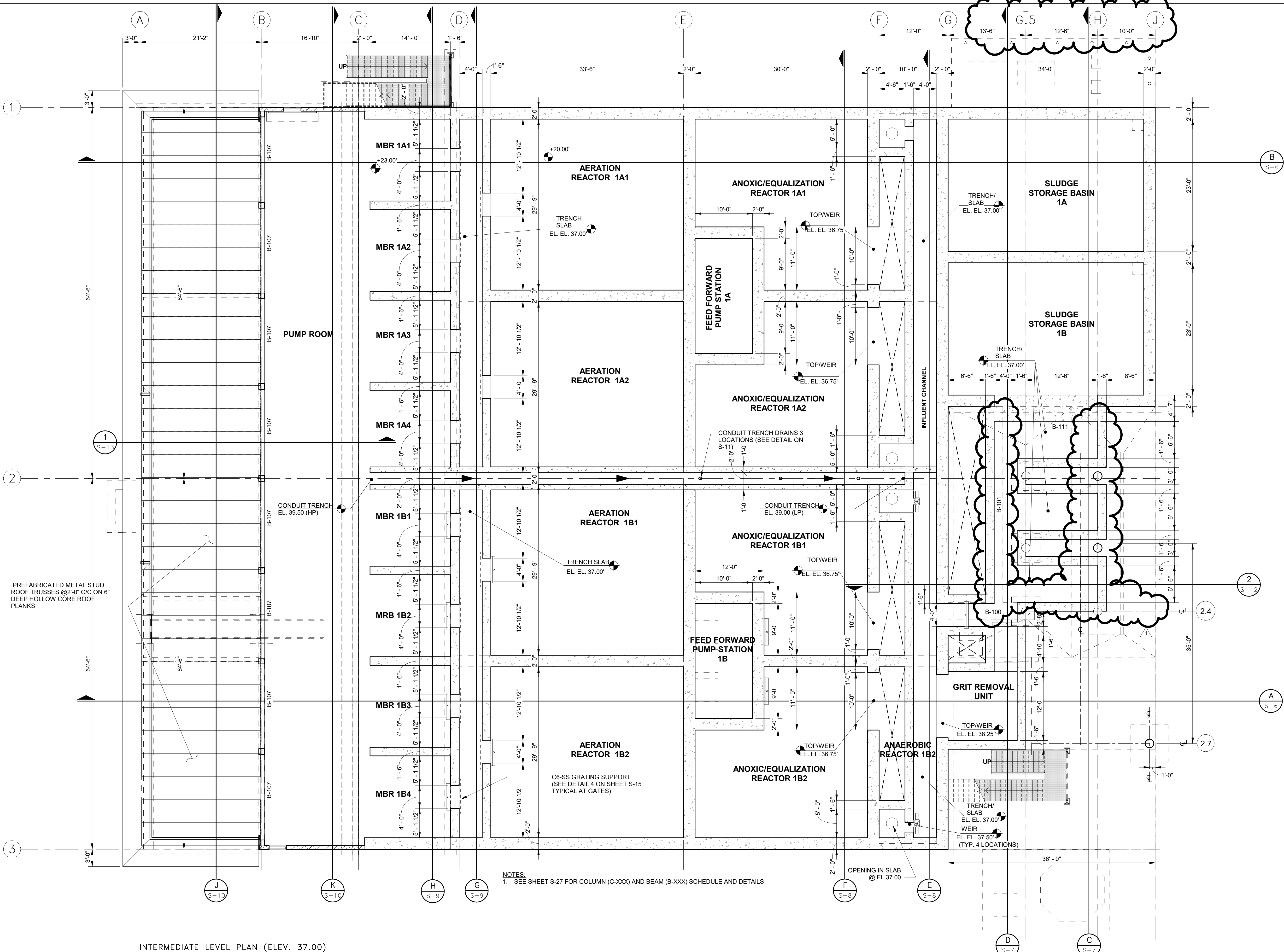
SHEET  
**S-3**

PROJECT MANAGER: OSCAR DUARTE  
P.036207@palmabayregionalwater.com  
FIELD BOOK INFORMATION:  
PLOT: 1E 47/2625 1138/60 PAH  
BY: QUINTANA, RAUL



PROJECT MANAGER: OSCAR DUARTE  
 1103007@scottregionalwater.com  
 FIELD BOOK INFORMATION:  
 PLOT: 1103007-1103007-01

BY: QUINTANA, RAUL



PREFABRICATED METAL STUD ROOF TRUSSES @2'-0" C/C ON 6" DEEP HOLLOW CORE ROOF PLANKS

NOTES:  
 1. SEE SHEET S-27 FOR COLUMN (C-XXX) AND BEAM (B-XXX) SCHEDULE AND DETAILS

INTERMEDIATE LEVEL PLAN (ELEV. 37.00)  
 SCALE: 1/8" = 1'-0"

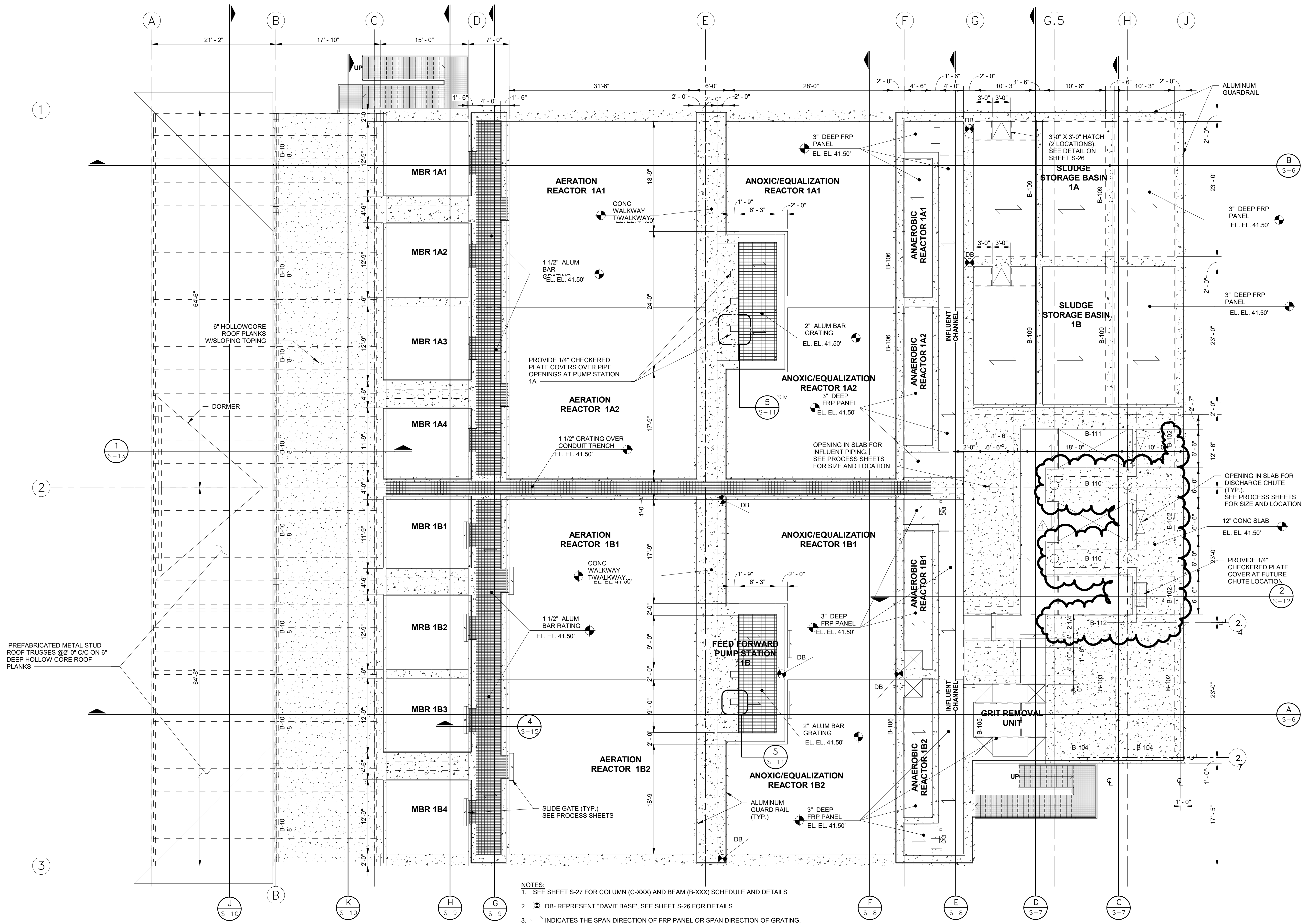
REV#	DATE	DESCRIPTION
1	08-07-20	ADDENDUM #3
E	09-07-18	FOR BID
D	07/20/18	90% PLANS RESUBMITTAL
C	05/25/18	90% PLANS
B	03/23/18	60% PLANS
A	01/12/18	30% PLANS

3790 Dale Highway NE, Suite D  
 Palm Bay, FL 32909  
 www.wadetrims.com  
 Certificate of Authorization No. 3952

CITY OF PALM BAY, FLORIDA  
 PALM BAY SOUTH REGIONAL  
 WATER RECLAMATION FACILITY  
 BIOLOGICAL PROCESS STRUCTURE  
 INTERMEDIATE LEVEL PLAN (ELEV. 37.00)

JAMES K. WHITE, P.E. FLORIDA LICENSE NO. 11068
JOB NO. <b>PBU2123-01L</b>
SHEET <b>S-4</b>

PROJECT MANAGER: OSCAR DUARTE  
 305079@southregional.com  
 FIELD BOOK INFORMATION:  
 PLOT: 11/20/2017 11:30:00 AM  
 BY: QUINTANA, PAUL



- NOTES:
- SEE SHEET S-27 FOR COLUMN (C-XXX) AND BEAM (B-XXX) SCHEDULE AND DETAILS
  - DB- REPRESENT "DAVIT BASE", SEE SHEET S-26 FOR DETAILS.
  - INDICATES THE SPAN DIRECTION OF FRP PANEL OR SPAN DIRECTION OF GRATING.
  - SEE SHEET S-28 FOR ENLARGED PLAN OF FRP COVER SYSTEM.

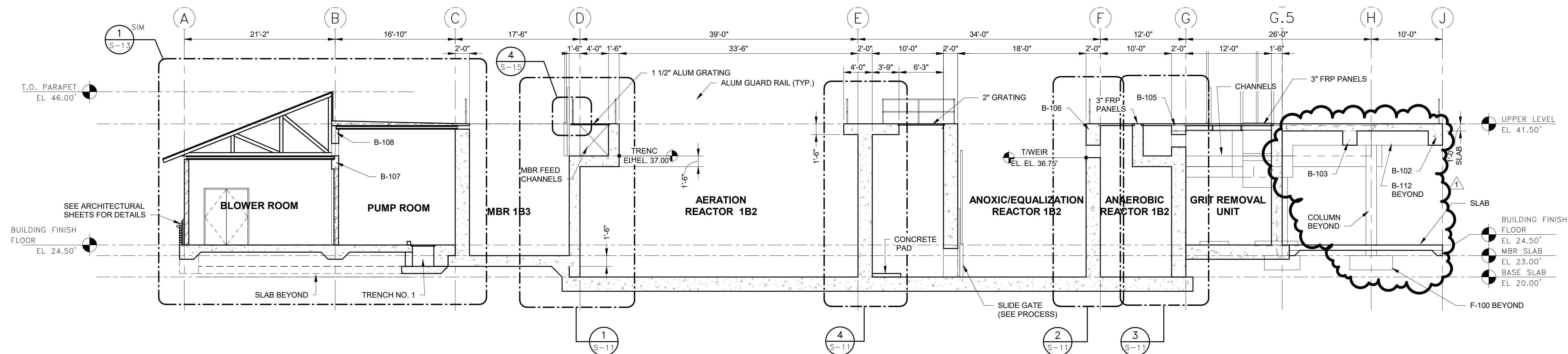
Upper Level Plan (Elev. 41.50)  
 SCALE: 1/8" = 1'-0"

REV#	DATE	DESCRIPTION	BY
A	01/12/18	30% PLANS	JKW
B	03/23/18	60% PLANS	JKW
C	05/25/18	90% PLANS	JKW
D	07/20/18	90% PLANS RESUBMITTAL	JKW
E	09-07-18	FOR BID	JKW
1	08-07-20	ADDENDUM #3	JKW

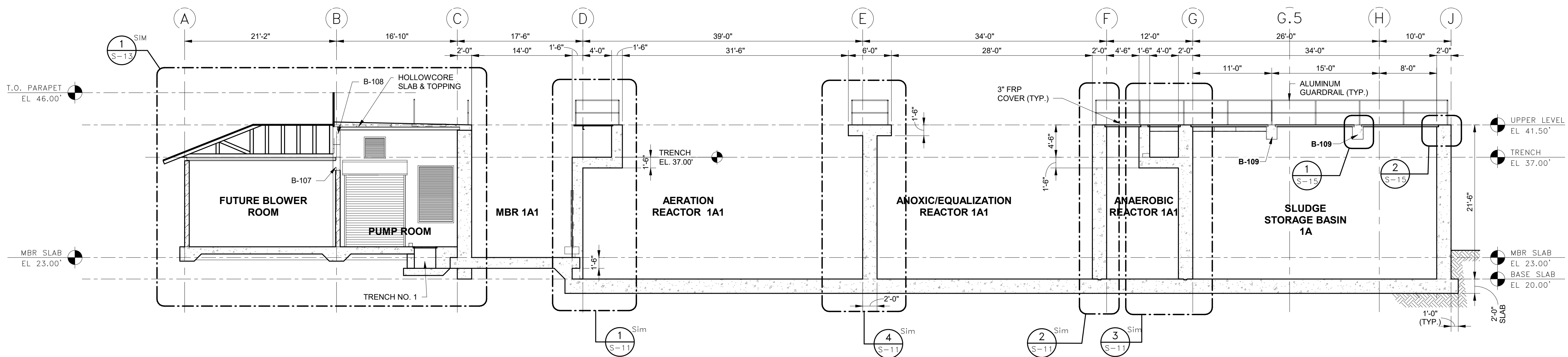
3790 Dale Highway NE, Suite D  
 Palm Bay, FL 32909  
 www.wadetrims.com  
 Certificate of Authorization No. 3952

CITY OF PALM BAY, FLORIDA  
 PALM BAY SOUTH REGIONAL  
 WATER RECLAMATION FACILITY  
 BIOLOGICAL PROCESS STRUCTURE  
 TREATMENT TANK UPPER (EL. 41.50)

JAMES K. WHITE, P.E. FLORIDA LICENSE NO. 11068
JOB NO. <b>PBU2123-01L</b>
SHEET <b>S-5</b>



**A** LONGITUDINAL SECTION A  
 S-3 SCALE: 1/8" = 1'-0"



**B** LONGITUDINAL SECTION B  
 S-3 SCALE: 1/8" = 1'-0"

REV#	DATE	DESCRIPTION	BY
A	01/12/18	30% PLANS	JKW
B	03/23/18	60% PLANS	JKW
C	05/25/18	90% PLANS	JKW
D	07/20/18	90% PLANS RESUBMITTAL	JKW
E	09/07/18	FOR BID	JKW
1	08-07-20	ADDENDUM #3	JKW

3790 Dixie Highway NE, Suite D  
 Palm Bay, FL 32909  
 www.wadetrिम.com  
 Certificate of Authorization No.: 3952



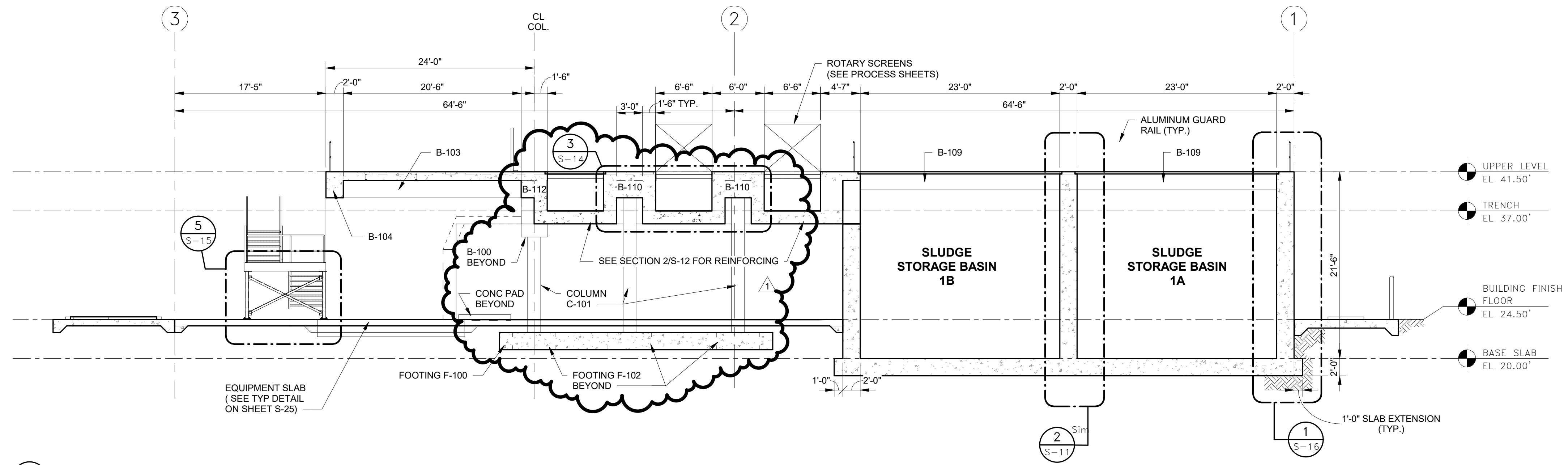
CITY OF PALM BAY, FLORIDA  
 PALM BAY SOUTH REGIONAL  
 WATER RECLAMATION FACILITY  
 BIOLOGICAL PROCESS STRUCTURE  
 LONGITUDINAL SECTIONS

JAMES K. WHITE, P.E.  
 FLORIDA LICENSE NO. 11068

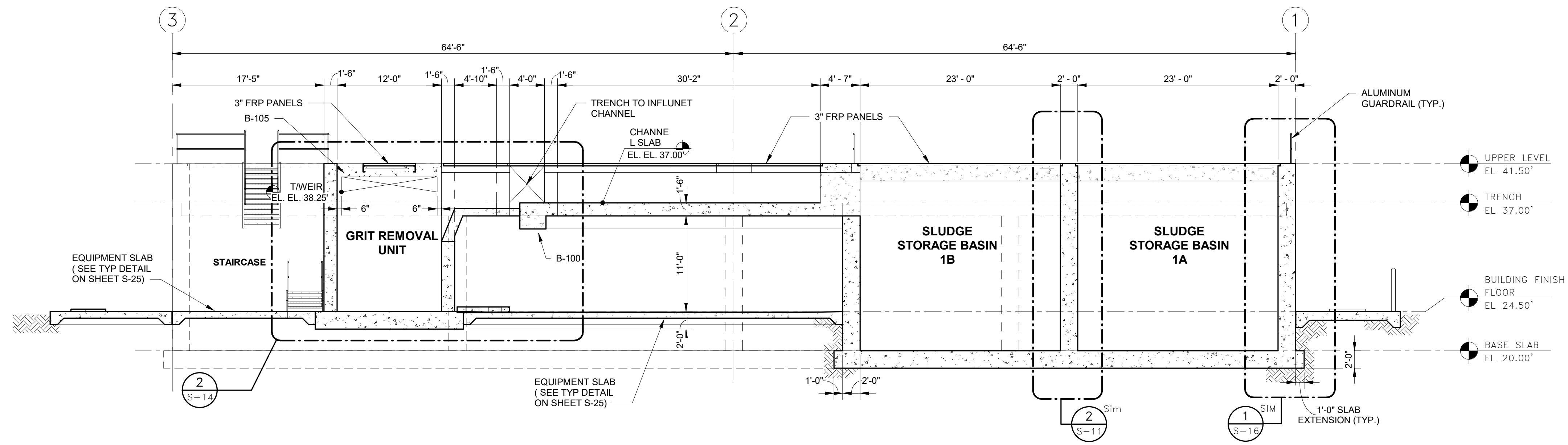
JOB NO.  
**PBU2123-01L**

SHEET

PROJECT MANAGER: OSCAR DUARTE  
 1.036207@southregionalwater.com  
 FIELD BOOK INFORMATION:  
 PLOT: 1872626 113839 241  
 BY: QUINTANA, RAUL



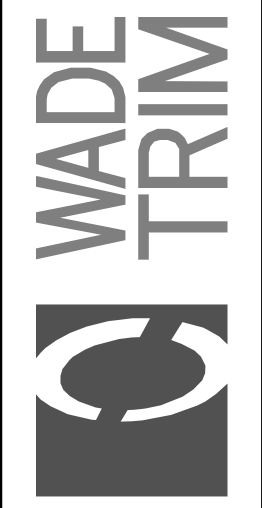
**C** HEADWORKS AND SLUDGE STORAGE CROSS SECTION  
 S-3 SCALE: 1/8" = 1'-0"



**D** HEADWORKS AND SLUDGE STORAGE CROSS SECTION  
 S-3 SCALE: 1/8" = 1'-0"

REV#	DATE	DESCRIPTION	BY
A	01/12/18	30% PLANS	JKW
B	03/23/18	60% PLANS	JKW
C	05/25/18	90% PLANS	JKW
D	07/20/18	90% PLANS RESUBMITTAL	JKW
E	09-07-18	FOR BID	JKW
1	08-07-20	ADDENDUM #3	JKW

3790 Dixie Highway NE, Suite D  
 Palm Bay, FL 32909  
 www.wadetrtrim.com  
 Certificate of Authorization No. 3952



CITY OF PALM BAY, FLORIDA  
 PALM BAY SOUTH REGIONAL  
 WATER RECLAMATION FACILITY  
 HEADWORKS AND SLUDGE STORAGE CROSS  
 SECTIONS

JAMES K. WHITE, P.E.  
 FLORIDA LICENSE NO. 11068

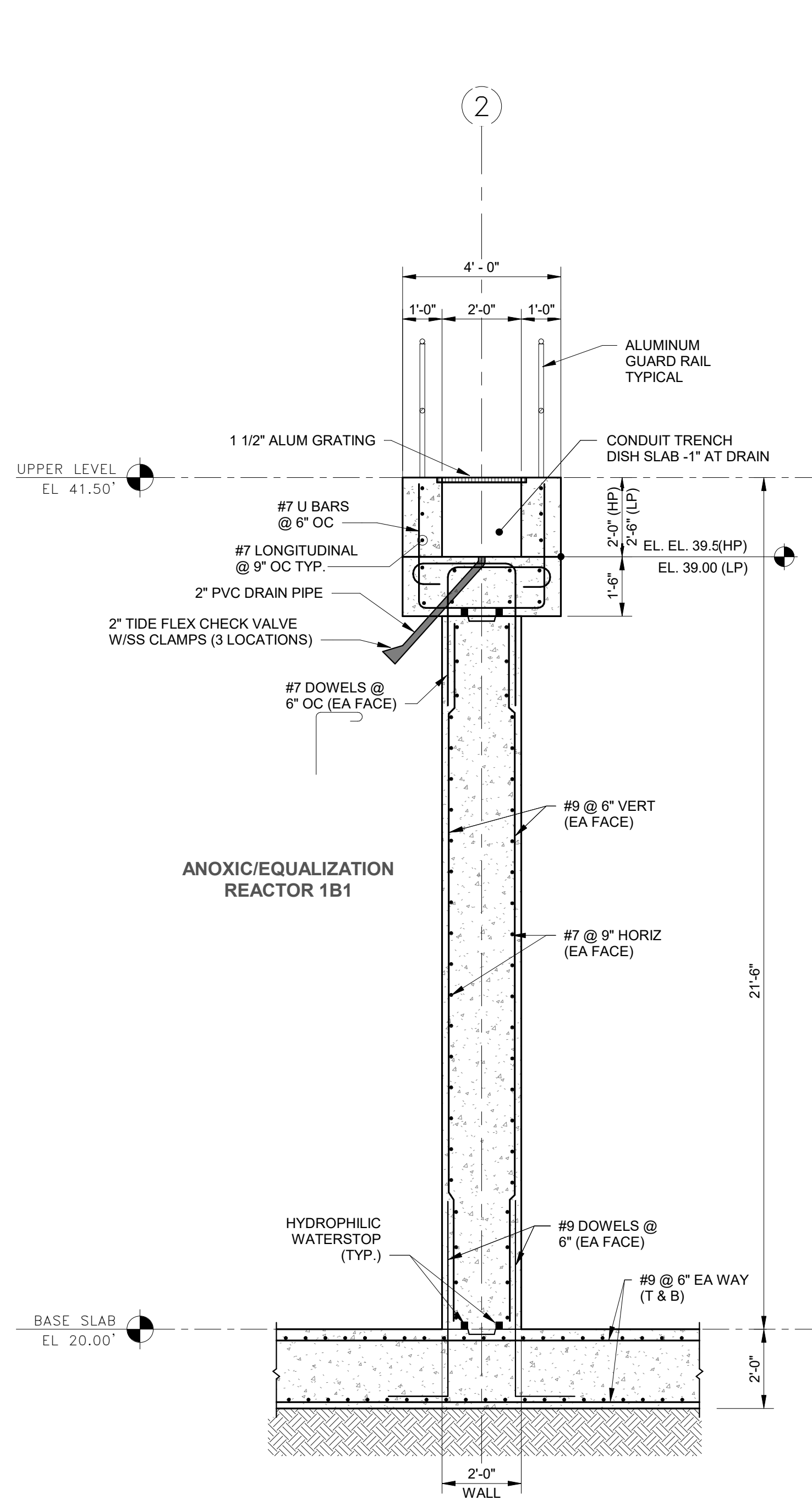
JOB NO. PBU2123-01L

SHEET S-7

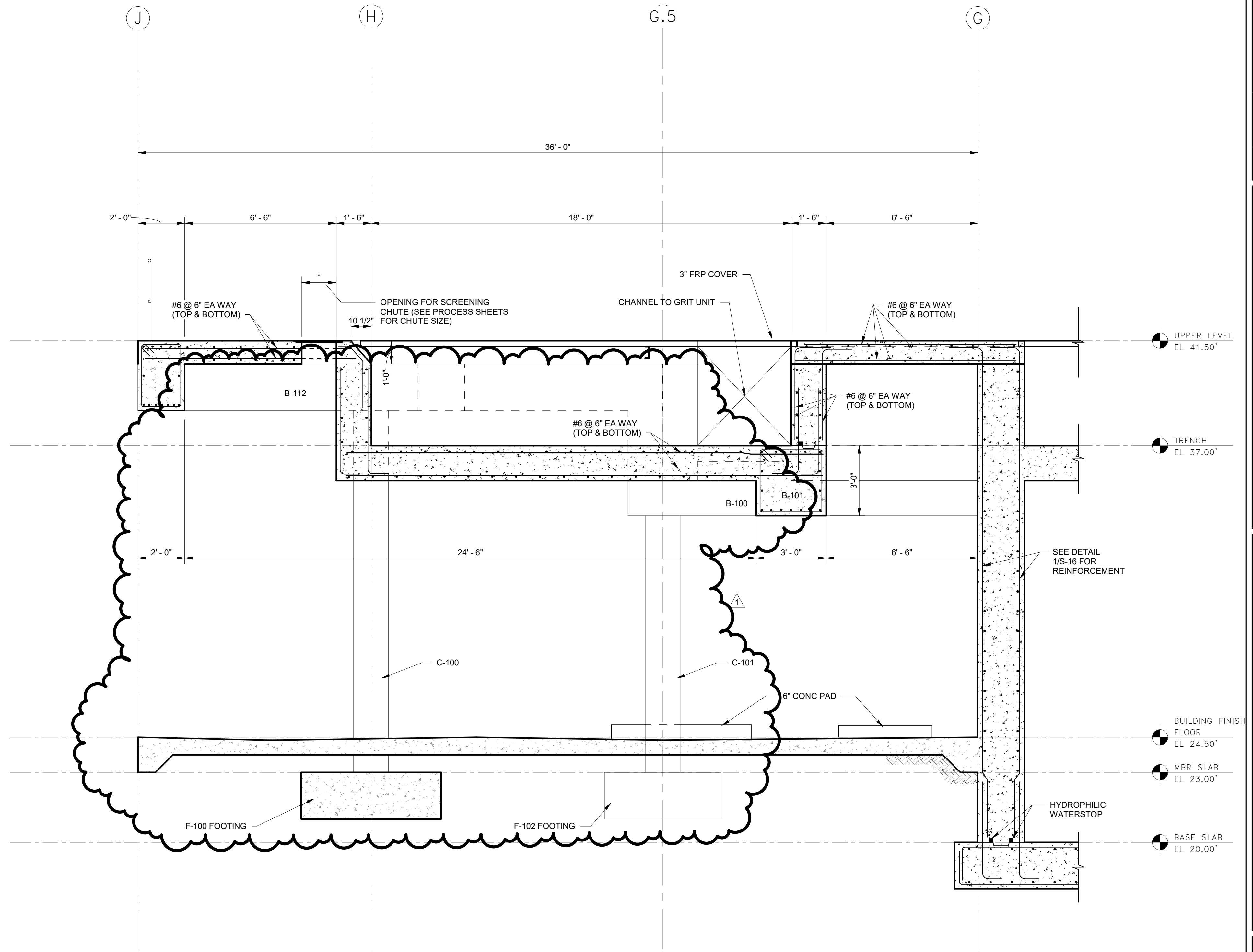
PROJECT MANAGER: OSCAR DUARTE  
 703.627.8200 | oscar.duarte@palmabayfl.gov  
 FIELD BOOK INFORMATION:  
 PLOT: 17/2020, 13/18 PN  
 BY: QUINTANA, RAUL



PROJECT MANAGER: OSCAR DUARTE  
 7436307@scotregionalwater.com  
 FIELD BOOK INFORMATION:  
 PLOT: 4772627 1138 11 241  
 BY: QUINTANA, RAUL



1 CONDUIT TRENCH / WALKWAY AND INTERIOR WALL DETAIL  
 S-8 SCALE: 3/8" = 1'-0"



2 CROSS SECTION AT SCREEN TRENCH  
 S-3 SCALE: 3/8" = 1'-0"

REV#	DATE	DESCRIPTION	BY
A	01/12/18	30% PLANS	JKW
B	03/23/18	60% PLANS	JKW
C	05/25/18	90% PLANS	JKW
D	07/20/18	90% PLANS RESUBMITTAL	JKW
E	09/07/18	FOR BID	JKW
1	08-07-20	ADDENDUM #3	JKW

3790 Dale Highway NE, Suite D  
 Palm Bay, FL 32909  
 www.wadetrtrim.com  
 Certificate of Authorization No.: 3952

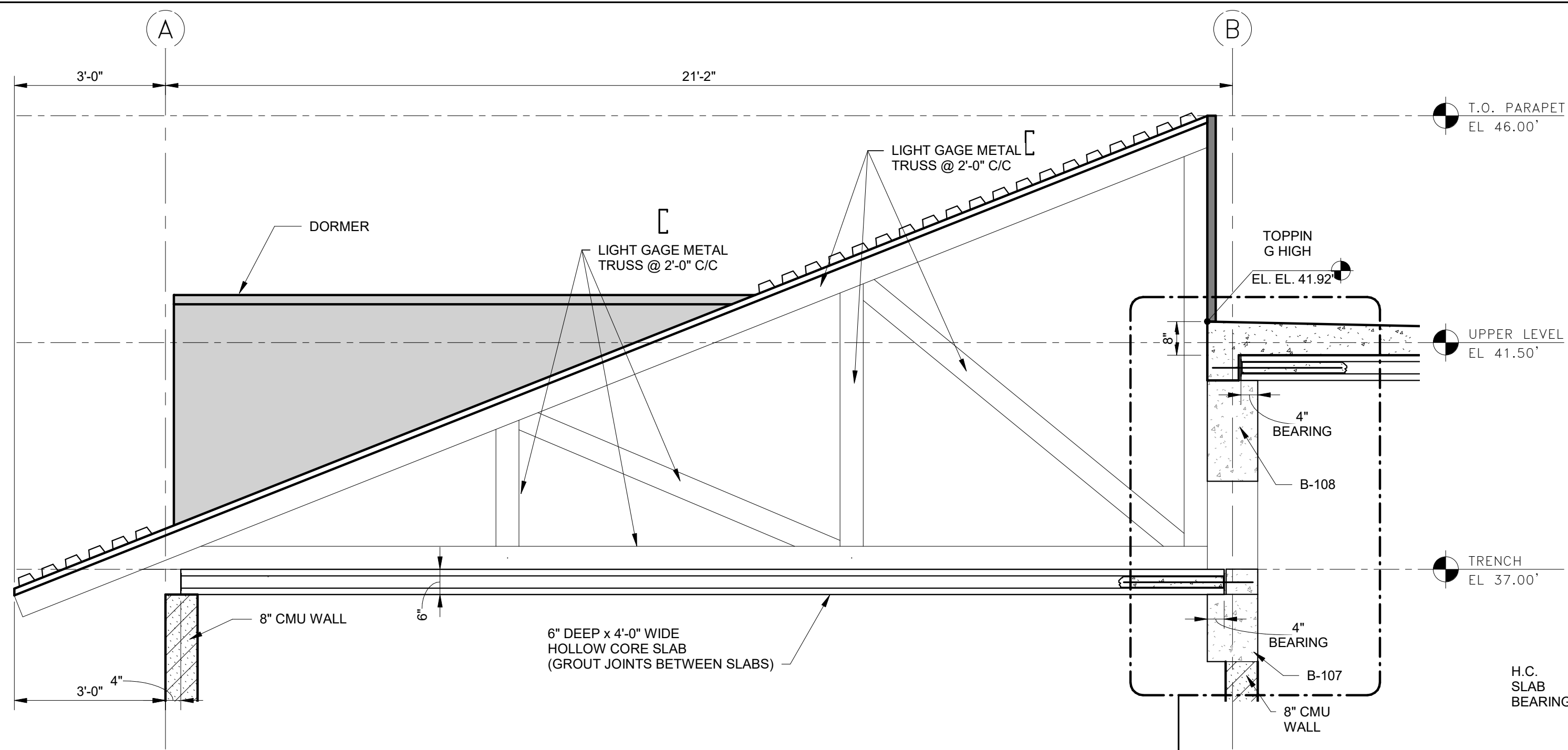
CITY OF PALM BAY, FLORIDA  
 PALM BAY SOUTH REGIONAL  
 WATER RECLAMATION FACILITY  
 BIOLOGICAL PROCESS STRUCTURE DETAILS

JAMES K. WHITE, P.E.  
 FLORIDA LICENSE NO. 11068

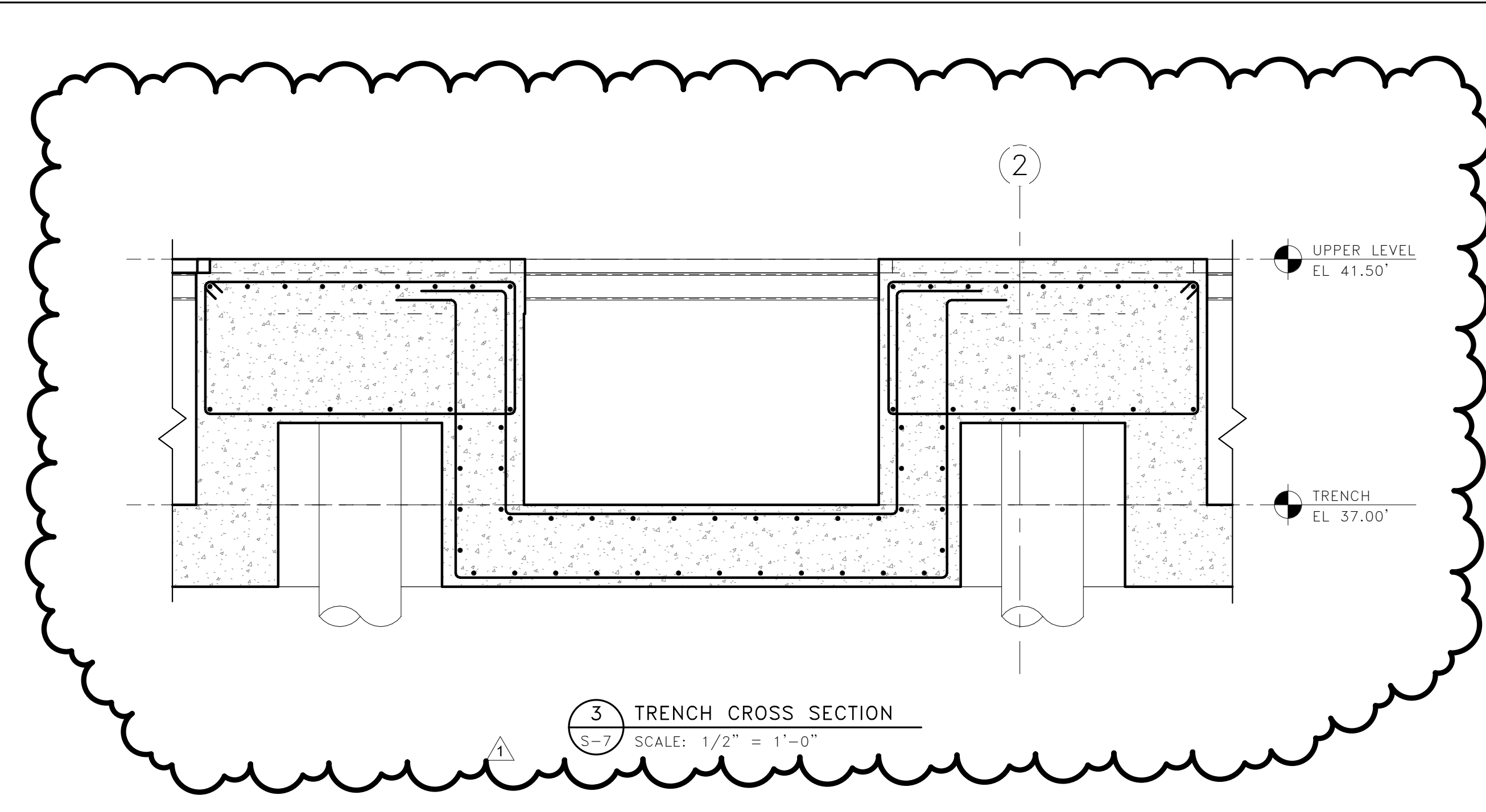
JOB NO.  
**PBU2123-01L**

SHEET  
**S-12**

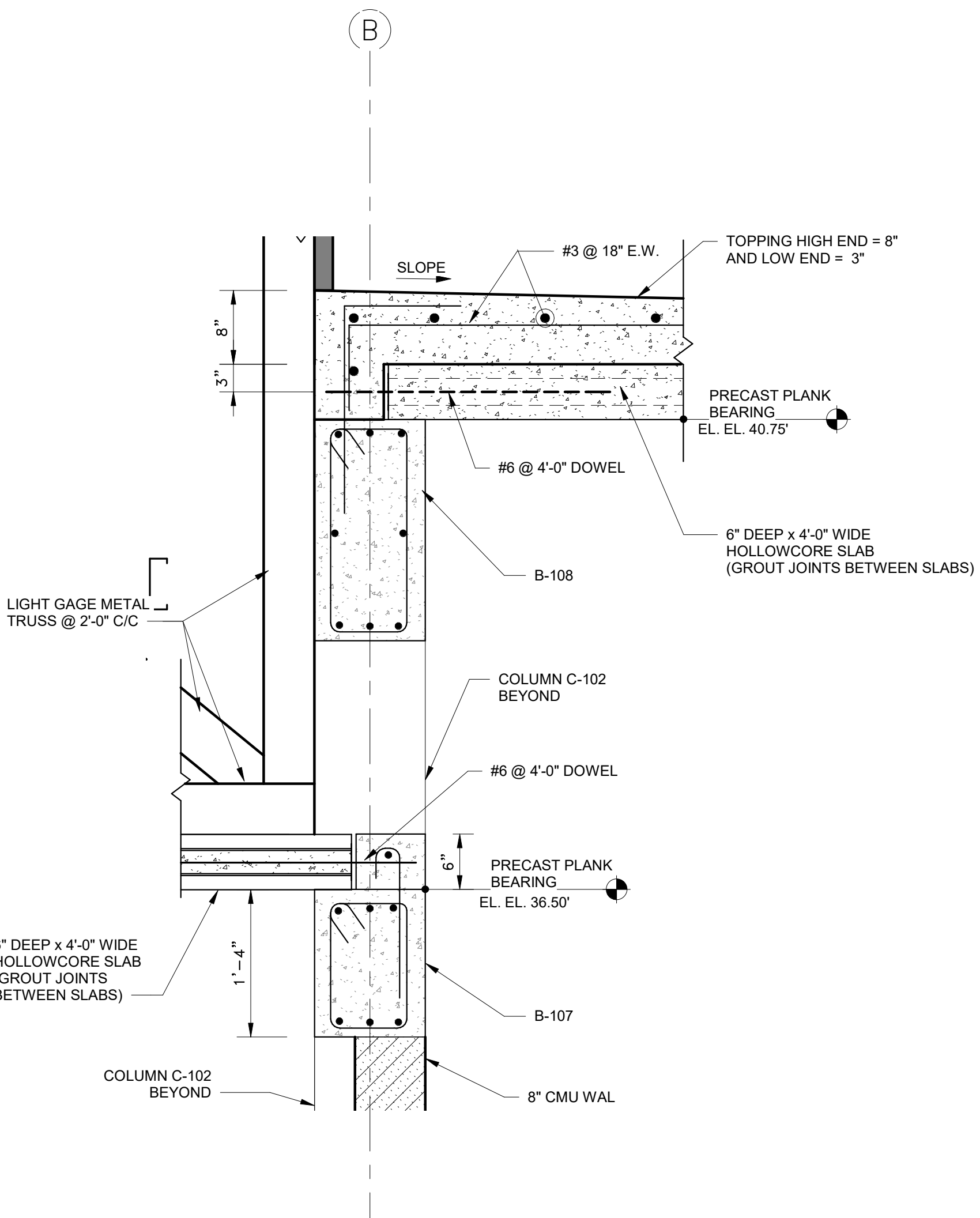
© Wade Trim Group, Inc.



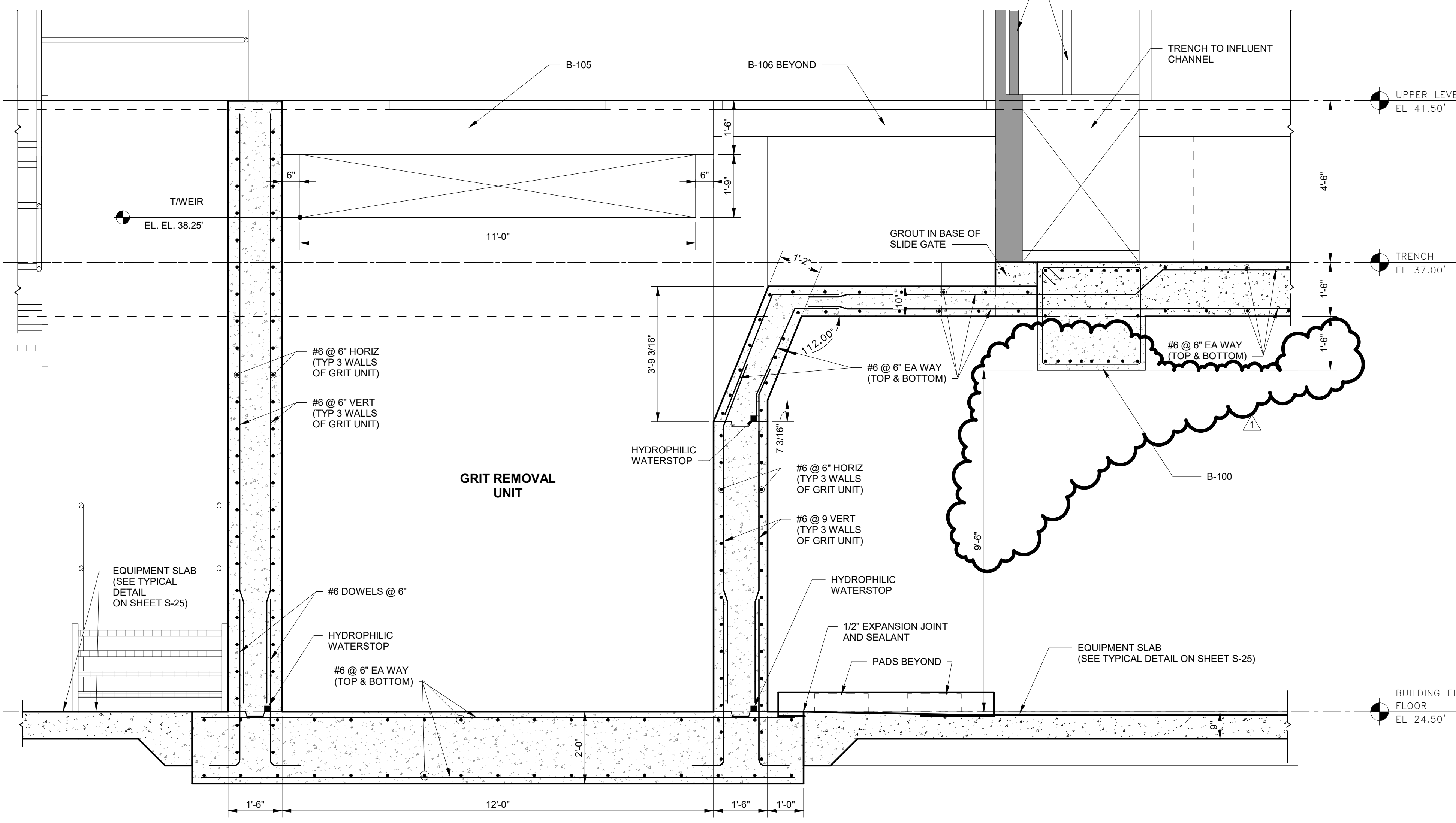
1 MCC AND BLOWER ROOM ROOF FRAMING SECTION  
S-13 SCALE: 1/2" = 1'-0"



3 TRENCH CROSS SECTION  
S-7 SCALE: 1/2" = 1'-0"



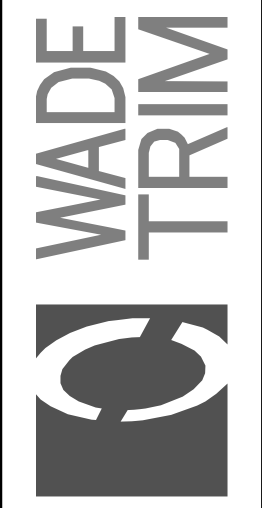
6 H.C. PLANK BEARING DETAIL  
S-14 SCALE: 1" = 1'-0"



2 GRIT REMOVAL UNIT SLAB DETAIL  
S-7 SCALE: 1/2" = 1'-0"

REV#	DATE	DESCRIPTION	BY
A	01/12/18	30% PLANS	
B	03/23/18	60% PLANS	
C	05/25/18	90% PLANS	
D	07/20/18	90% PLANS RESUBMITTAL	
E	09/07/18	FOR BID	
1	08-07-20	ADDENDUM #3	

3790 Dale Highway NE, Suite D  
Palm Bay, FL 32909  
www.wadetrims.com  
Certificate of Authorization No. 3952



CITY OF PALM BAY, FLORIDA  
PALM BAY SOUTH REGIONAL  
WATER RECLAMATION FACILITY  
SECTION DETAILS

JAMES K. WHITE, P.E.  
FLORIDA LICENSE NO. 11068

JOB NO. PBU2123-01L

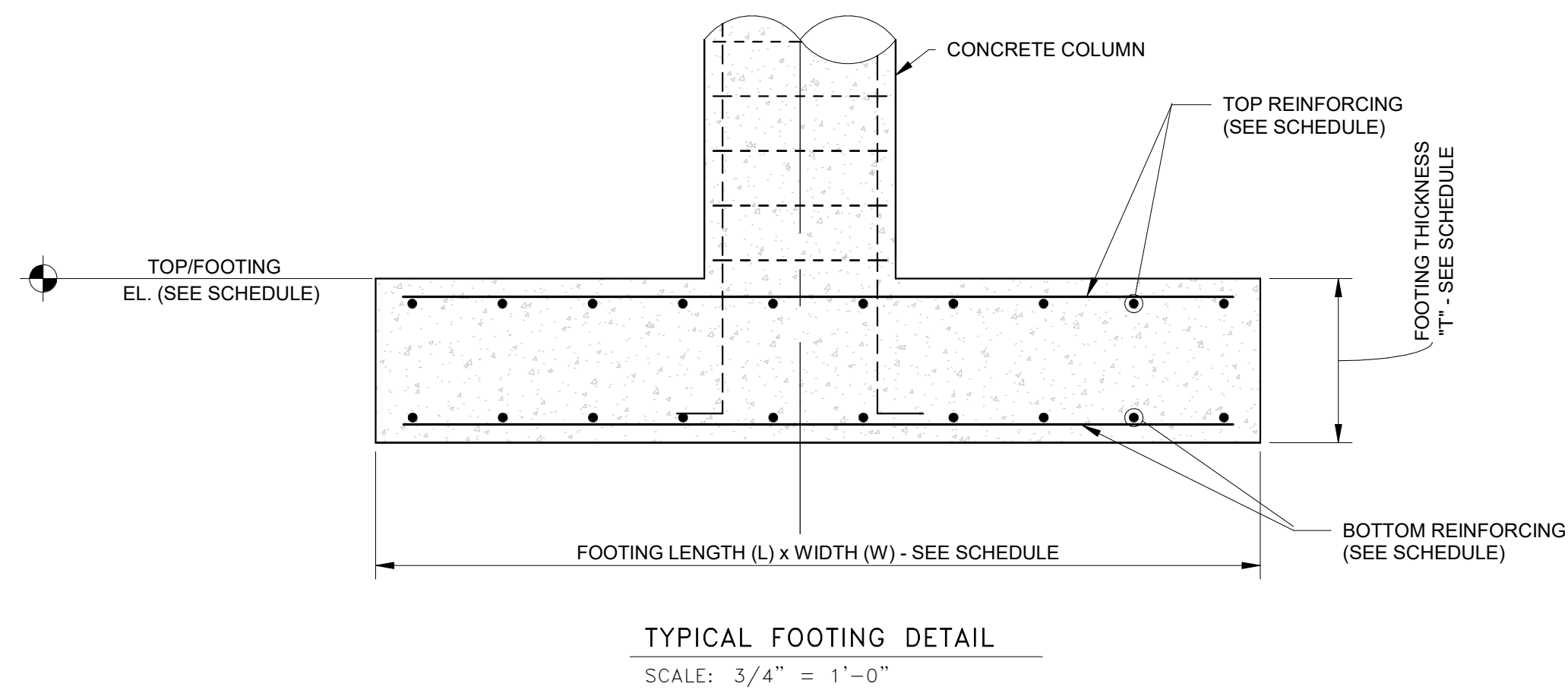
SHEET

S-14

FIELD BOOK INFORMATION: PLOT# 1872627, 12/18/18 P.M. BY: QUINTANA, PAUL  
PROJECT MANAGER: OSCAR DUARTE  
V.08/20/2018 09:00 AM

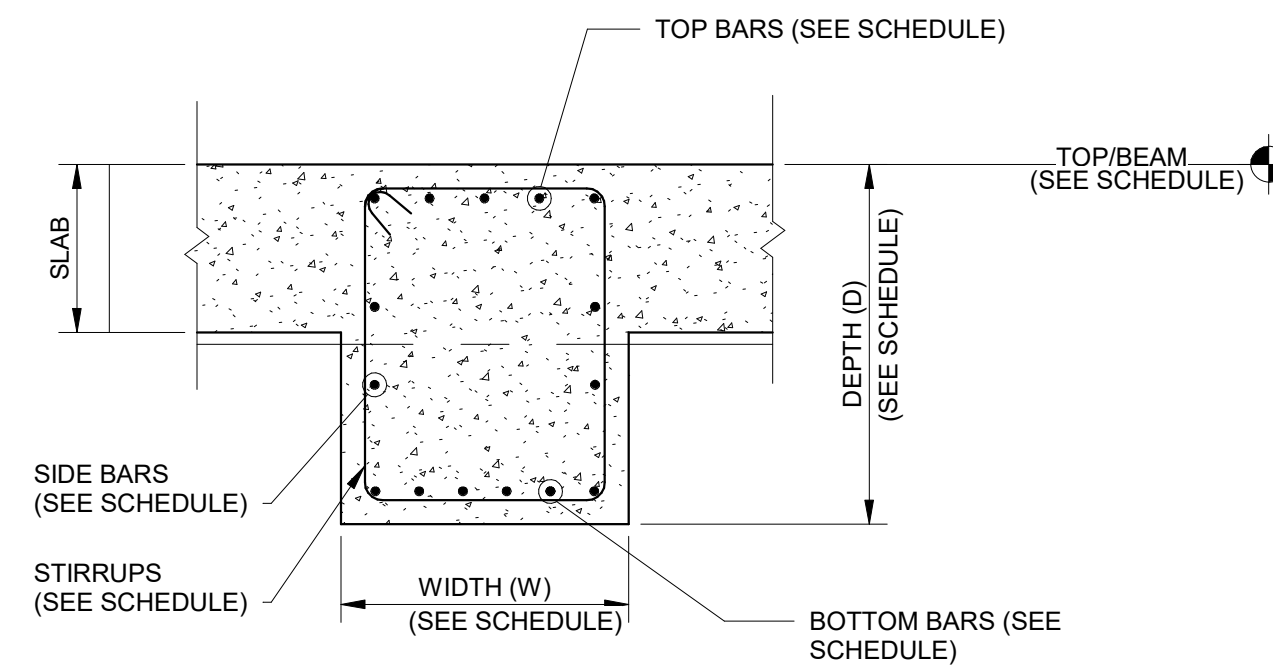


FOOTING SCHEDULE						
Mark	SIZE L x W x T	TOP FOOTING ELEV.	TOP REINFORCEMENT	BOTTOM REINFORCEMENT	LOCATION	REMARKS
F-100	6'-0" x 31'-6" x 2'-0"	23'-0"	(9) - #7 LONG WAY & (42) - #7 SHORT WAY	(9) - #7 LONG WAY & (42) - #7 SHORT WAY	HEADWORKS	
F-101	6'-6" x 6'-6" x 2'-0"	23'-0"	N/A	(7) - #8 EA WAY	HEADWORKS	
F-102	5'-0" x 5'-0" x 2'-0"	23'-0"	N/A	(6) - #78 EA WAY	HEADWORKS	

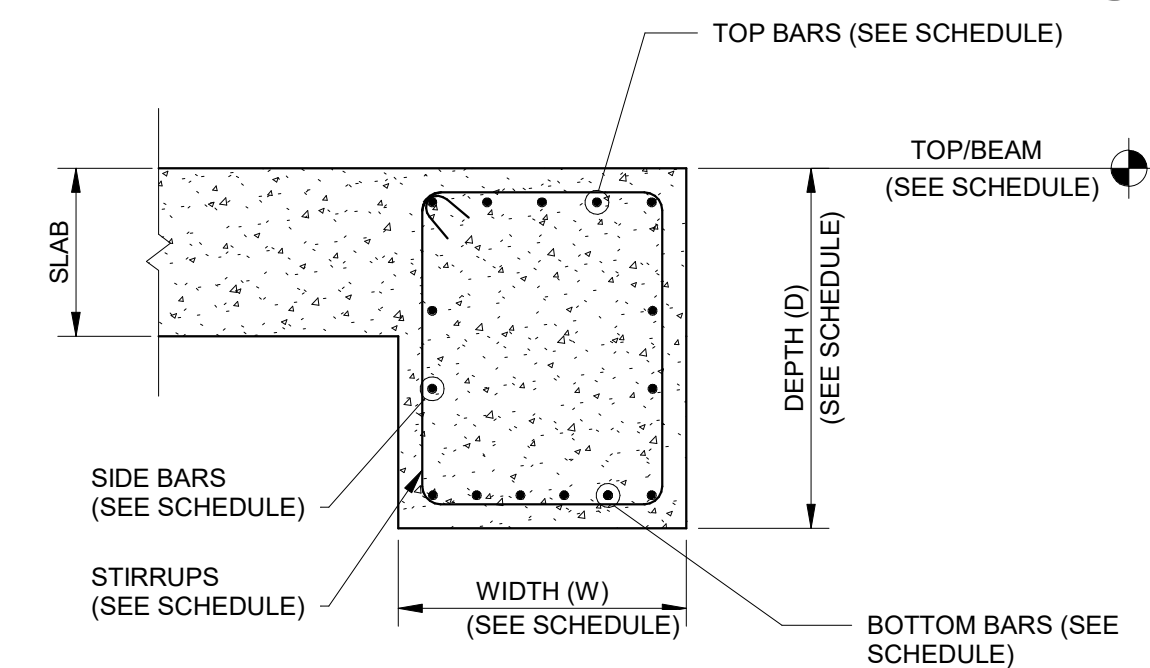


TYPICAL FOOTING DETAIL  
SCALE: 3/4" = 1'-0"

CONCRETE BEAM SCHEDULE								
Mark	SIZE (D X W)	BEAM DETAIL	BOTTOM BARS SIZE	TOP BARS SIZE	SIDE BAR SIZE	STIRRUPS SIZE	LOCATION	REMARKS
B-100	3'-0" x 3'-0" (B)	3	(5) - #8	(4) - #8	(3) - #7 EA SIDE	#4@6"	HEADWORKS ALONG COL LINE 2.4	TOP/BEAM EL 37.00
B-101	3'-0" x 3'-0" (B)	3	(8) - #9	(6) - #8	(2) - #7 EA SIDE	#4@6"	HEADWORKS ALONG COL LINE G.3	TOP/BEAM EL 37.00
B-102	3'-0" x 2'-0" (A)	2	(4) - #8	(4) - #8	(1) - #7 EA SIDE	#4@6"	HEADWORKS ALONG COL LINE J	TOP/BEAM EL 41.50
B-103	3'-0" x 2'-0" (B)	1	(6) - #8	(4) - #8	(1) - #7 EA SIDE	#4@9"	HEADWORKS ALONG COL LINE H	TOP/BEAM EL 41.50
B-104	3'-0" x 2'-0" (C)	2	(7) - #8	(5) - #8	(1) - #7 EA SIDE	#4@6"	HEADWORKS ALONG COL LINE 2.4	TOP/BEAM EL 41.50
B-105	1'-6" x 2'-0" (B)	4	(5) - #7	(5) - #7	N/A	#4@12"	ABOVE GRIT REMOVAL EFFLUENT WEIR	TOP/BEAM EL 41.50
B-106	3'-0" x 2'-0" (D)	4	(5) - #7	(5) - #7	N/A	#4@12"	ANAEROBIC REACTOR EFFLUENT WEIR	TOP/BEAM EL 41.50
B-107	1'-4" x 1'-0"	5	(3) - #7	(3) - #7	(1) - #7 EA SIDE	#4@6"	CONTROL BUILDING LOW ROOF @ COL LINE B	TOP/BEAM EL 36.50
B-108	2'-0" x 1'-0"	5	(3) - #7	(3) - #7	(1) - #7 EA SIDE	#4@6"	CONTROL BUILDING HIGH ROOF @ COL LINE B	TOP/BEAM EL 40.75
B-109	2'-0" x 1'-6"	4	(5) - #7	(4) - #7	(1) - #7 EA SIDE	#4@9"	SLUDGE STORAGE BASIN	TOP/BEAM EL 41.50
B-110	3'-0" x 6'-0"	3	(6) - #8	(9) - #8	(2) - #7 EA SIDE	#4@6"	HEADWORKS BETWEEN DRUM SCREEN CHANNELS	TOP/BEAM EL 41.50
B-111	5'-0" x 4'-7"	4 SIM	(6) - #6	(6) - #6	N/A	#4@6"	ADJACENT TO SOUTH WALL SLUDGE STORAGE BASIN 1B	TOP/BEAM EL 41.50
B-112	3'-0" x 3'-0" (C)	1	(6) - #8	(9) - #8	(2) - #7 EA SIDE	#4@6"	HEADWORKS ALONG COL LINE 2.4	TOP/BEAM EL 41.50

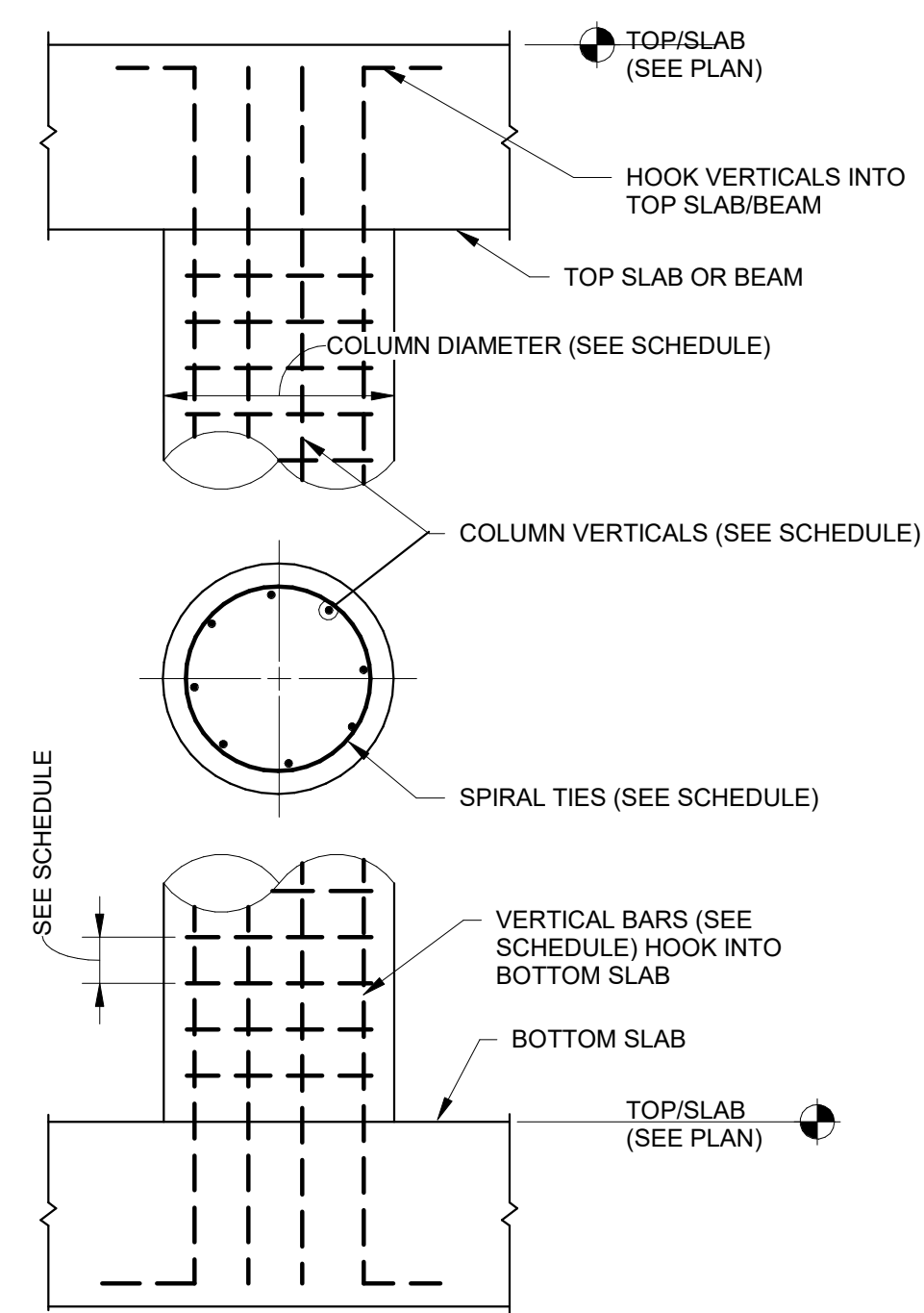


BEAM DETAIL-1  
SCALE: 3/4" = 1'-0"

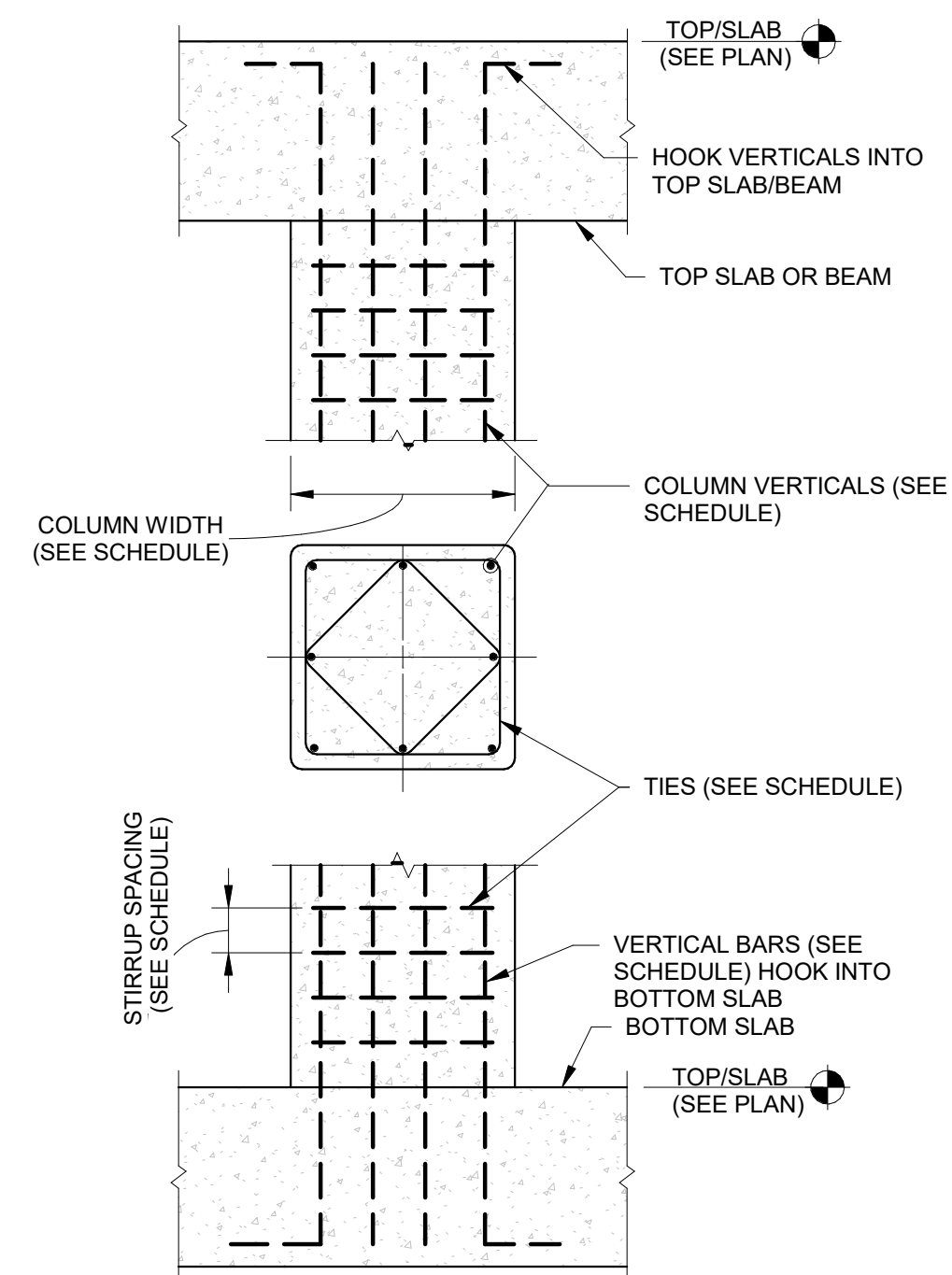


BEAM DETAIL-2  
SCALE: 3/4" = 1'-0"

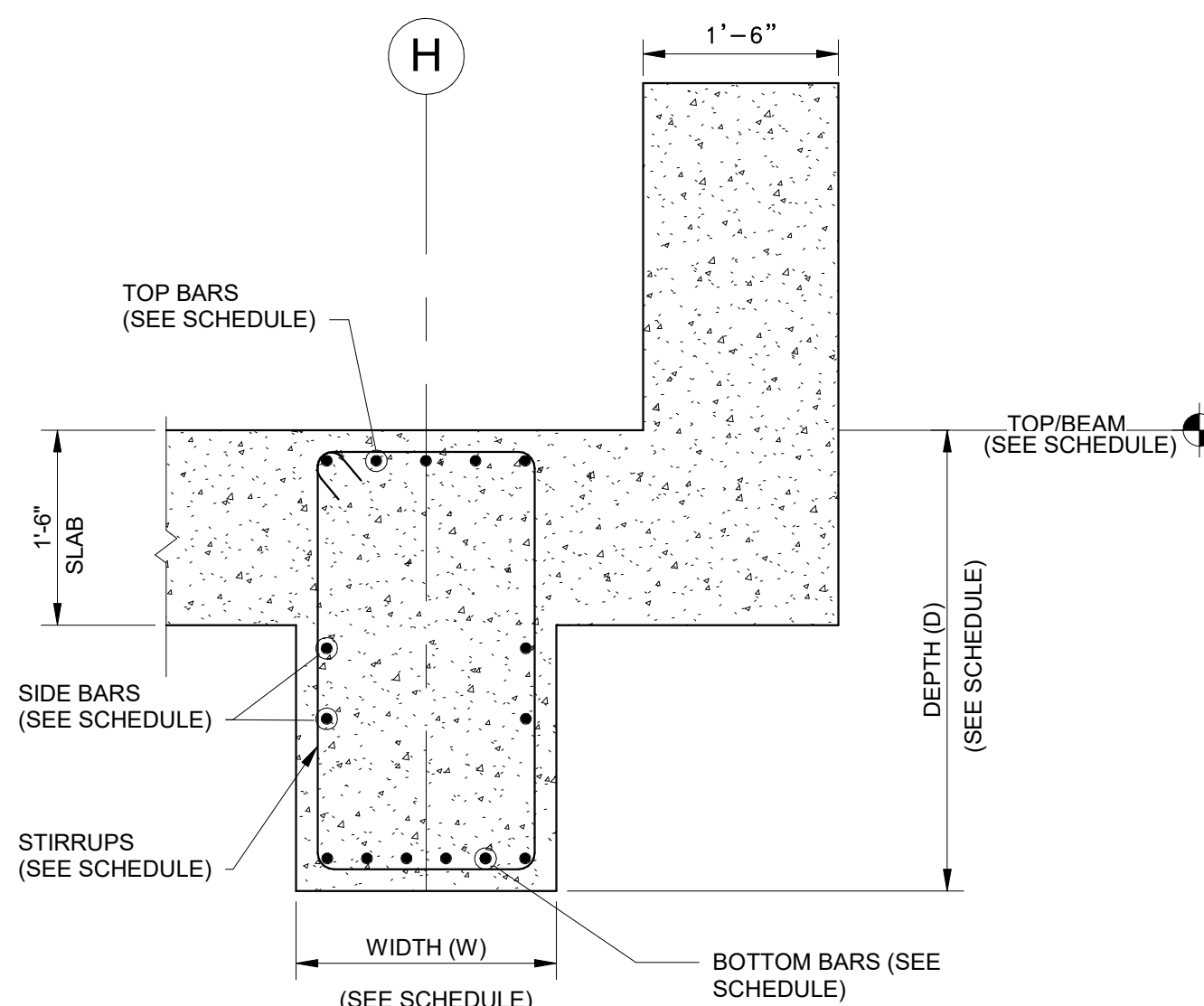
CONCRETE COLUMN SCHEDULE					
MARK	SIZE (LxW or DIA)	VERT REINF & DOWELS	TIES	LOCATION	REMARKS
C-100	1'-6" DIA. (A)	(8) - #8	#4 SPIRAL @ 3"	HEADWORKS	
C-101	1'-6" DIA. (B)	(8) - #10	#4 SPIRAL @ 3"	HEADWORKS	
C-102	1'-0" x 1'-0"	(4) - #8	#4 @ 6" (1 PER SET)	CONTROL BUILDING	



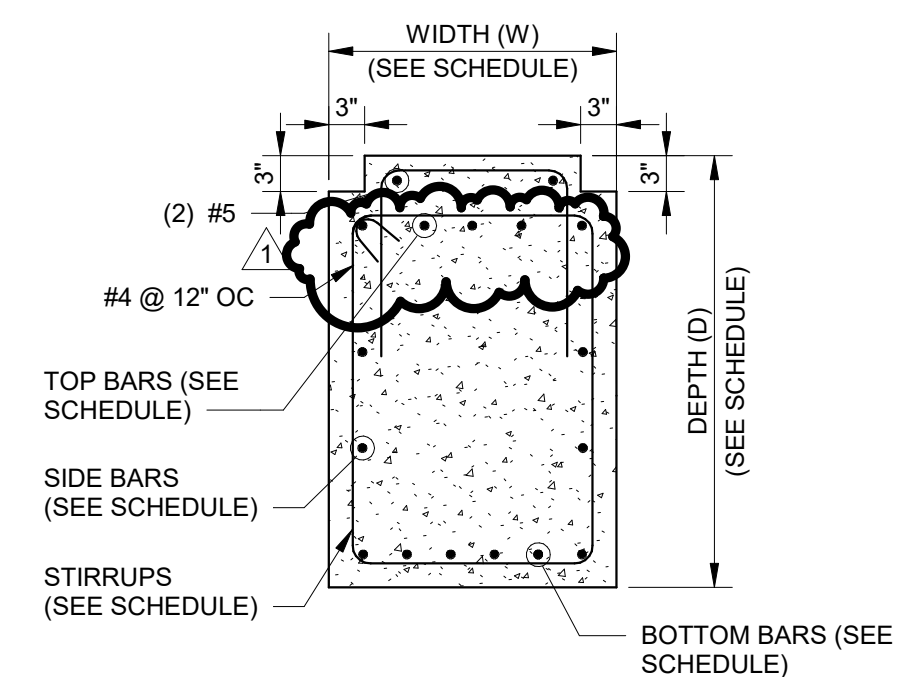
1 TYPICAL CIRCULAR COLUMN DETAIL  
SCALE: NONE



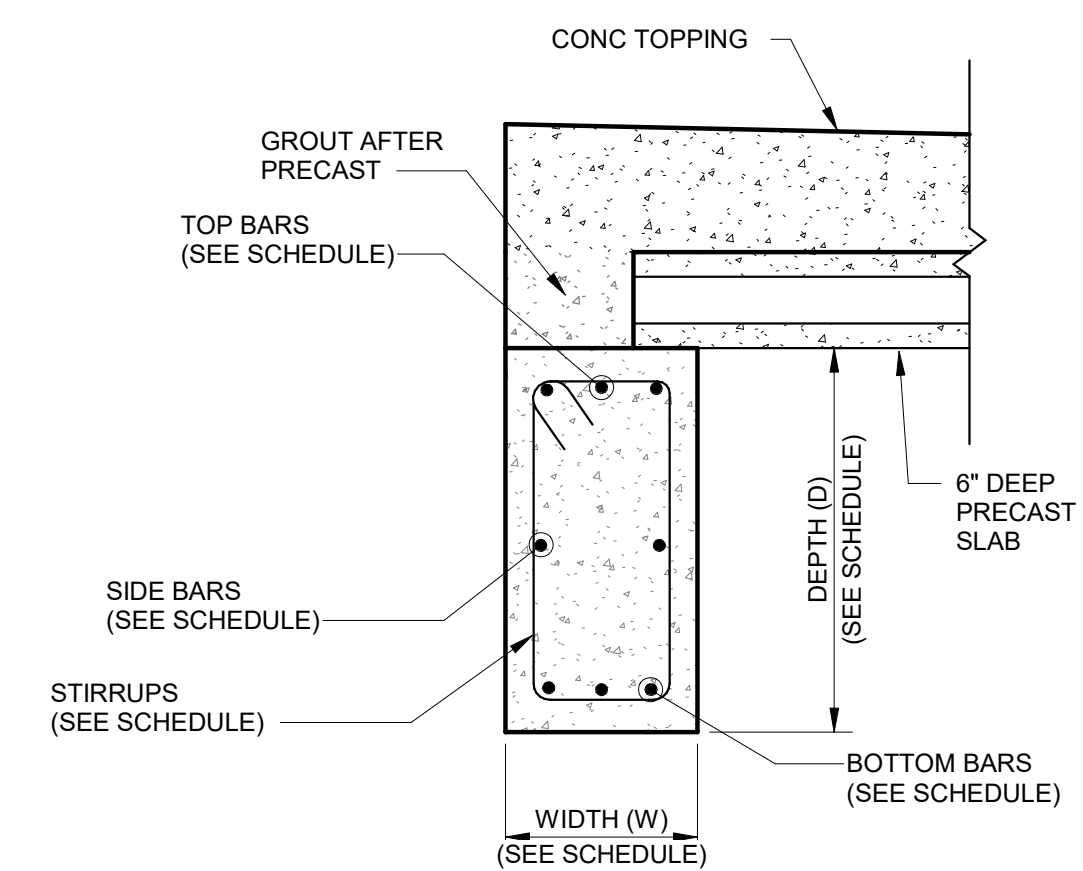
TYPICAL COLUMN DETAIL  
SCALE: 1/2" = 1'-0"



BEAM DETAIL-3  
SCALE: 3/4" = 1'-0"



BEAM DETAIL 4  
SCALE: 3/4" = 1'-0"



BEAM DETAIL 5  
SCALE: 1" = 1'-0"

PROJECT MANAGER: OSCAR DUARTE  
 3350 South Regional Blvd., Suite 101  
 Palm Bay, FL 32909  
 887.262.1138 (14 FAX)

REV#	DATE	DESCRIPTION	BY
A	01/12/18	30% PLANS	
B	03/23/18	60% PLANS	
C	05/25/18	90% PLANS	
D	07/20/18	90% PLANS RESUBMITTAL	
E	09/07/18	FOR BID	
1	08-07-20	ADDENDUM #3	

3790 Dale Highway NE, Suite D  
 Palm Bay, FL 32909  
 www.wadetrim.com  
 Certificate of Authorization No. 3952

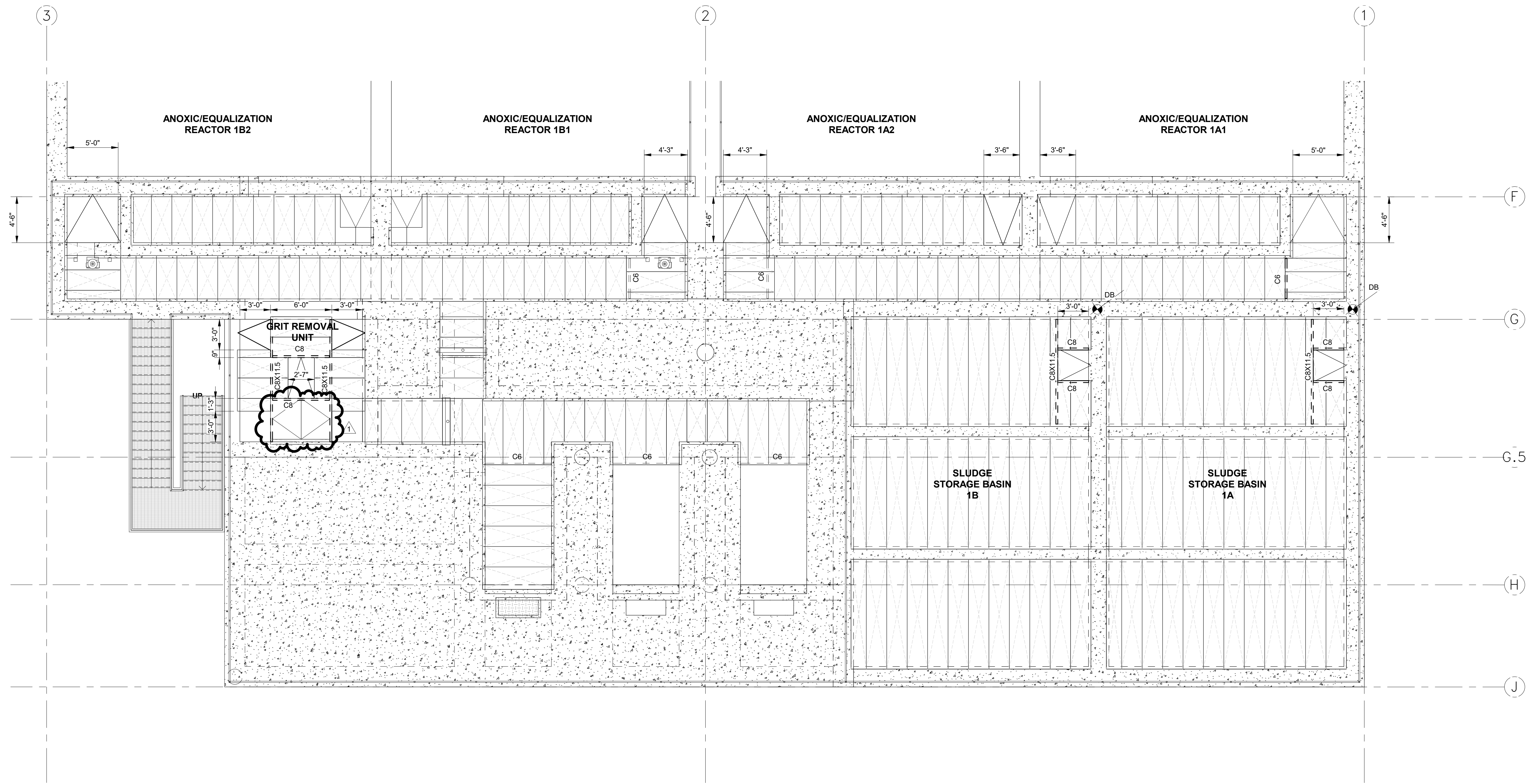
CITY OF PALM BAY, FLORIDA  
 PALM BAY SOUTH REGIONAL  
 WATER RECLAMATION FACILITY  
 FOOTING, COLUMN AND BEAM SCHEDULES  
 AND DETAILS

JAMES K. WHITE, P.E.  
 FLORIDA LICENSE NO. 11068

JOB NO.  
**PBU2123-01L**

SHEET  
**S-27**

PROJECT MANAGER: OSCAR DUARTE  
 1/26/2019 09:50:00 AM  
 FIELD BOOK INFORMATION:  
 PLOT# 1 07/26/2019 11:38:14 AM  
 BY: QUINTANA, RAUL



1 FRP COVER PLAN AND STAINLESS STEEL SUPPORT FRAMING PLAN (Elev. 41.50)  
 S-6 SCALE: 3/16" = 1'-0"

**NOTES:**

1. ALL BEAMS INDICATED WITH "C8" SHALL BE STAINLESS STEEL C8x11.5
2. INDICATES 2'0" WIDE x 3" THICK FRP COVER PANEL
3. HINGE SIDE OF HATCH REPRESENTS HATCH IN FRP COVER SYSTEM. TYPICAL HATCH IS 3'-0" x 3'-0" UNLESS OTHERWISE NOTED.
4. CONNECTIONS FOR FRP MEMBERS INCLUDING FRP "COVER" PANELS SHALL BE TYPE A316 STAINLESS STEEL (UNLESS NOTED OTHERWISE).
5. FRP "COVER" PANELS SHALL BE 3" DEEP COMPOSITE PANELS BY STRONGWELL (OR APPROVED EQUAL).
6. ALL FRP MEMBERS SHALL BE EXTREN 625 SERIES BY STRONGWELL OR APPROVED EQUAL.
7. ALL FRP COMPOSITE PANELS SHALL BE CONSTRUCTED USING POLYESTER FIRE RETARDANT RESIN WITH ULTRA VIOLET PROTECTION.
8. ALL FRP COVERS SHALL RECEIVE A MEDIUM GRIT, NON-SLIP COATING TO THE EXPOSED TOP SURFACE BY THE FRP SUPPLIER (UNLESS NOTED OTHERWISE).

REV#	DATE	DESCRIPTION	BY
A	01/12/18	30% PLANS	JKW
B	03/23/18	60% PLANS	JKW
C	05/25/18	90% PLANS	JKW
D	07/20/18	90% PLANS RESUBMITTAL	JKW
E	09-07-18	FOR BID	JKW
1	08-07-20	ADDENDUM #3	JKW

3790 Dixie Highway NE, Suite D  
 Palm Bay, FL 32909  
 www.wadetrtrim.com  
 Certificate of Authorization No. 3952

CITY OF PALM BAY, FLORIDA  
 PALM BAY SOUTH REGIONAL  
 WATER RECLAMATION FACILITY  
 FRP COVER PLAN AND STAINLESS STEEL  
 SUPPORT FRAMING

JAMES K. WHITE, P.E.  
 FLORIDA LICENSE NO. 11068

JOB NO.  
**PBU2123-01L**

SHEET  
**S-28**

© Wade Trim Group, Inc.