



120 MALABAR ROAD SE, PALM BAY, FL 32907-3009

(321) 952-3424

June 15, 2020

ADDENDUM #1

TO THE CONTRACT DOCUMENTS FOR THE CITY OF PALM BAY

Project Name & Number:

IFB # 39-0-2020/JG, South Regional Water Reclamation Facility Construction

FROM: City of Palm Bay
120 Malabar Road SE
Palm Bay, FL 32907

TO: All Parties Holding Specifications

The purpose of this addendum is to provide the following changes, modifications and/or additions to the contract documents and technical specifications.

CLARIFICATIONS:

- 1) The Engineers Estimate is \$27,024,000.00
- 2) The Deadline for questions will be August 7, 2020

QUESTIONS RECEIVED:

Q1. The electrical drawings are missing the E-26 drawing. Please provide as soon as possible.

A1. Plan Sheet E-26 is attached to this Addendum.

Q2. My inquiry is to learn if there will be a specification for paint (high performance coatings and linings) for concrete and/or steel?

A2. Discussion related to coating systems can be found in Attachment D (Technical Specifications) and Attachment E (Drawings) of the Invitation for Bid.

Q3. Could you please provide an original .PDF copy of the engineering drawings for this project, produced directly from the AutoCAD files?

A3. The City will not be providing Attachment E in a different format. Please use the provided Attachment E for bidding purposes.

Q4. Ref. Attachment A – FDEP Supplementary Conditions, Article 10: Is this a Federal CAP Grant Project?

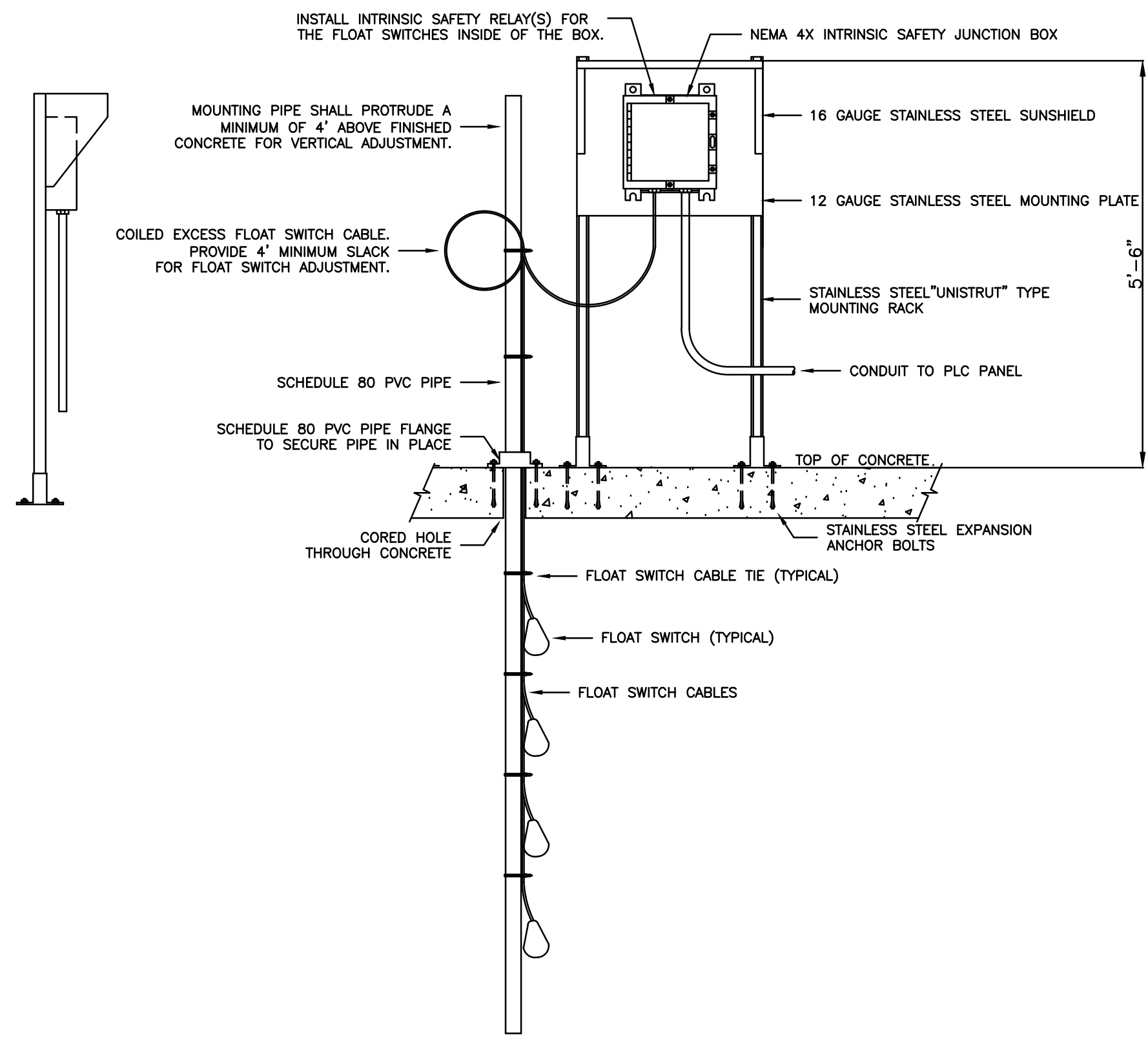
A4. No.

Q5. Are you anticipating any gopher tortoise relocation? Noticed the survey mentioned tortoises but there are no specs or unit price items on Bid Form. Please clarify.

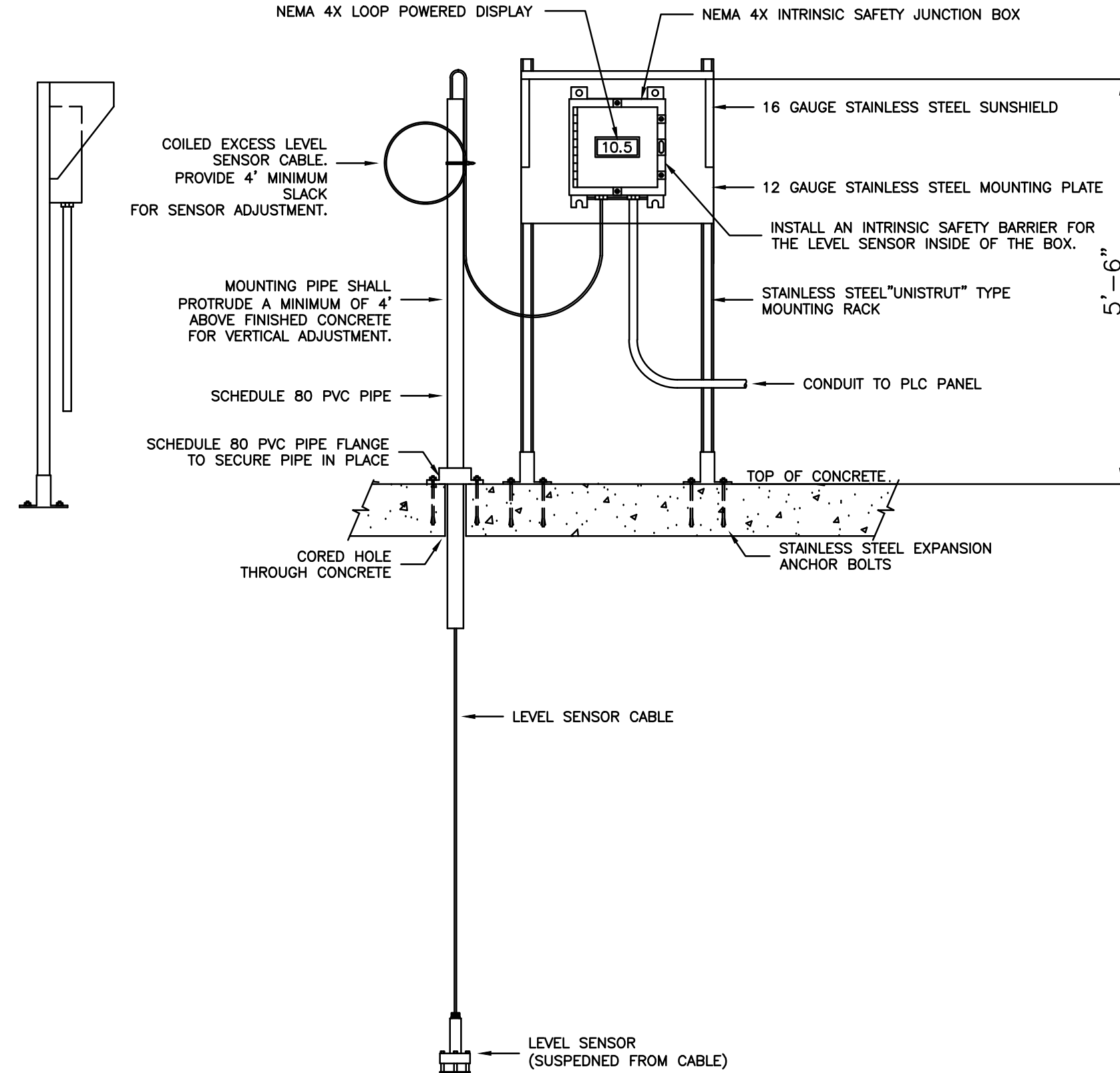
A5. Please refer to Attachment D, Appendix D, Environmental Assessment Report. The Contractor will be responsible for the removal of gopher tortoises as identified in the report, and the amount shall be included in the lump sum price to construct the project.

END OF ADDENDUM #1

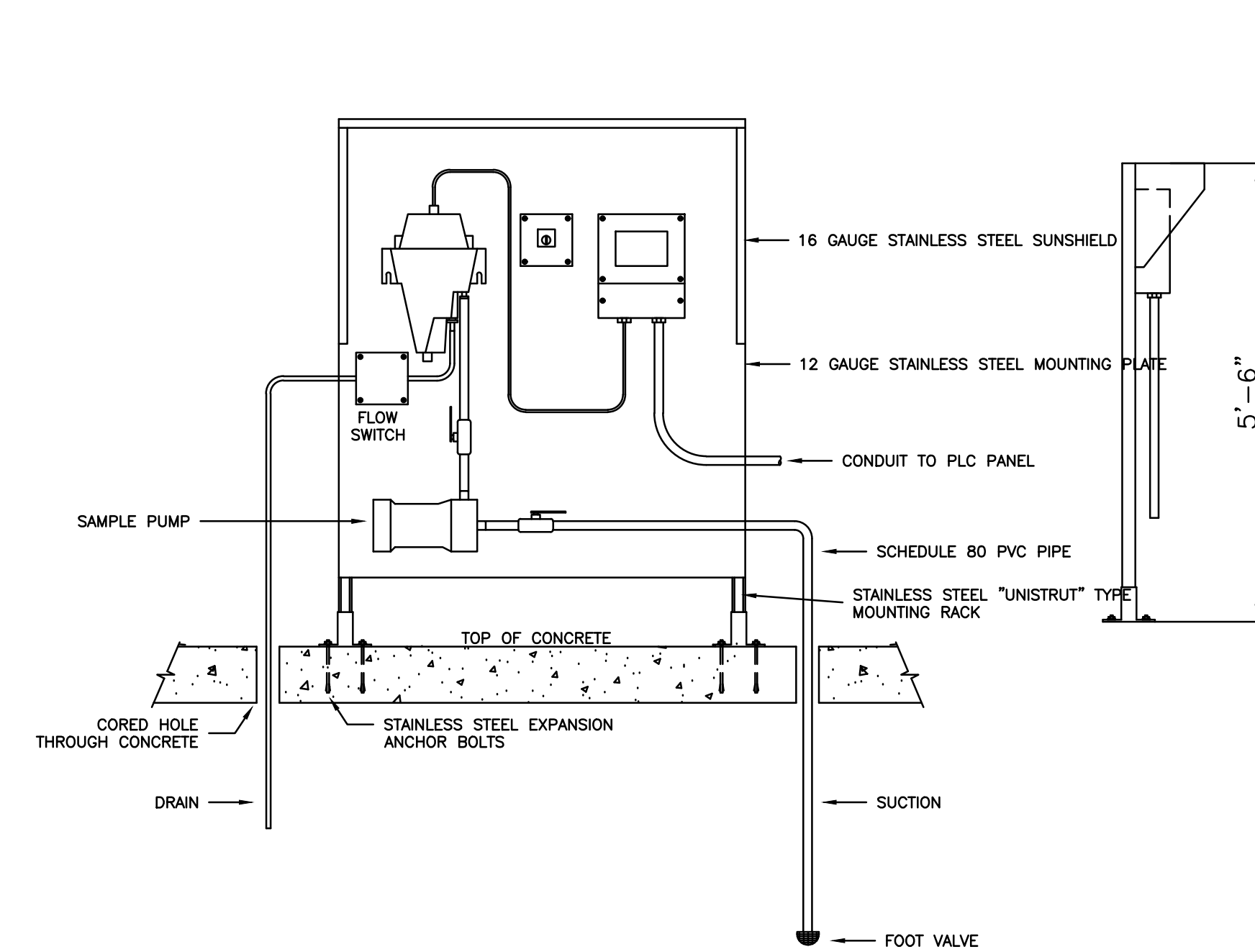
PROJECT MANAGER: OSCAR DUARTE
 CIVIL WORK: SCHWAB ENGINEERING, INC.
 FIELD BOOK INFORMATION: C:\PL\WORK\SCHWAB\0422738\EDT-PLTS-E-26-INSTRUMENTDETAILS.DWG - E-26 - PLOTTED: 6/10/2020 10:28 AM BY: SCHWAB, ALAN



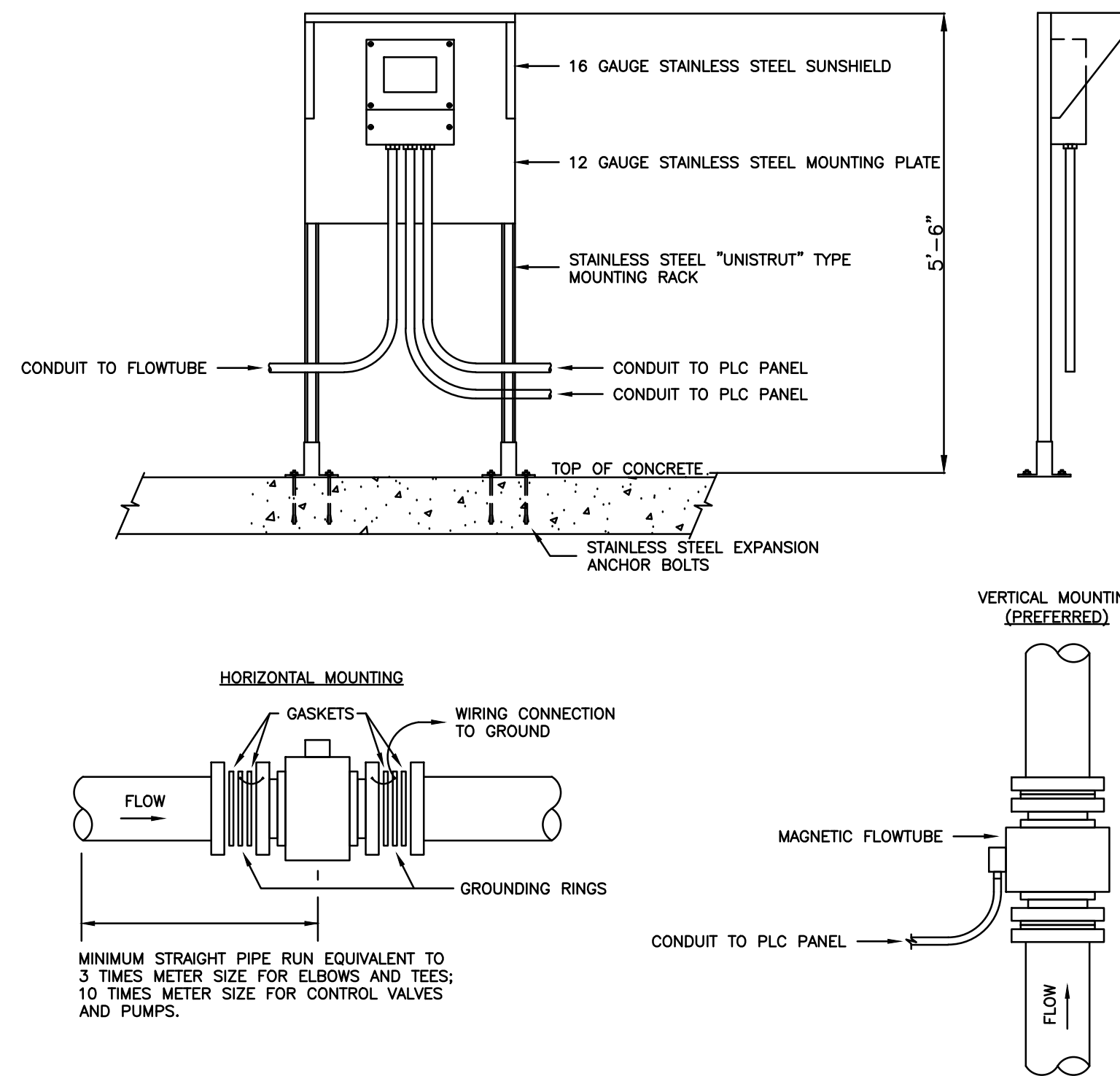
TYPICAL FLOAT SWITCH MOUNTING DETAIL



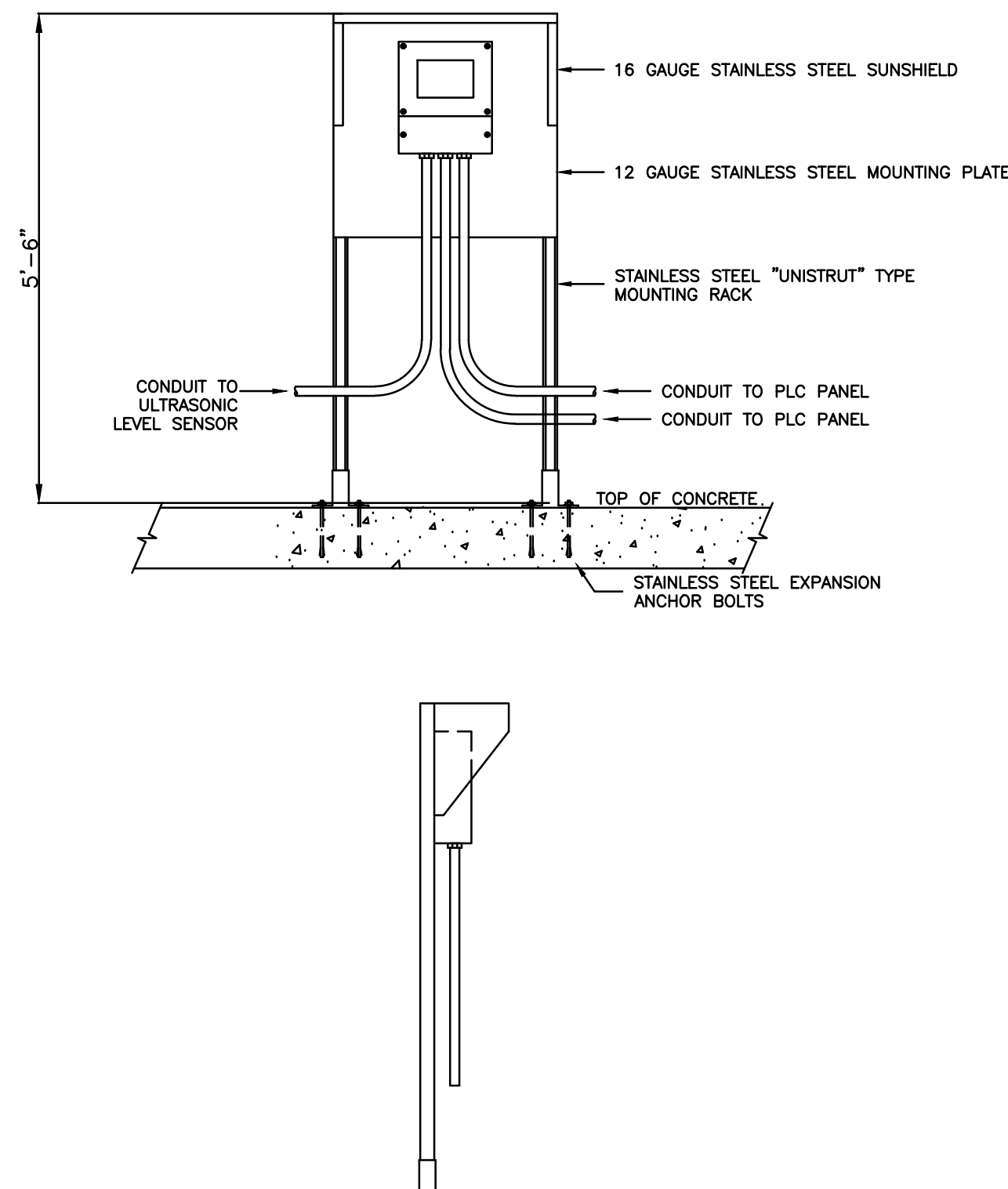
TYPICAL LEVEL SENSOR MOUNTING DETAIL



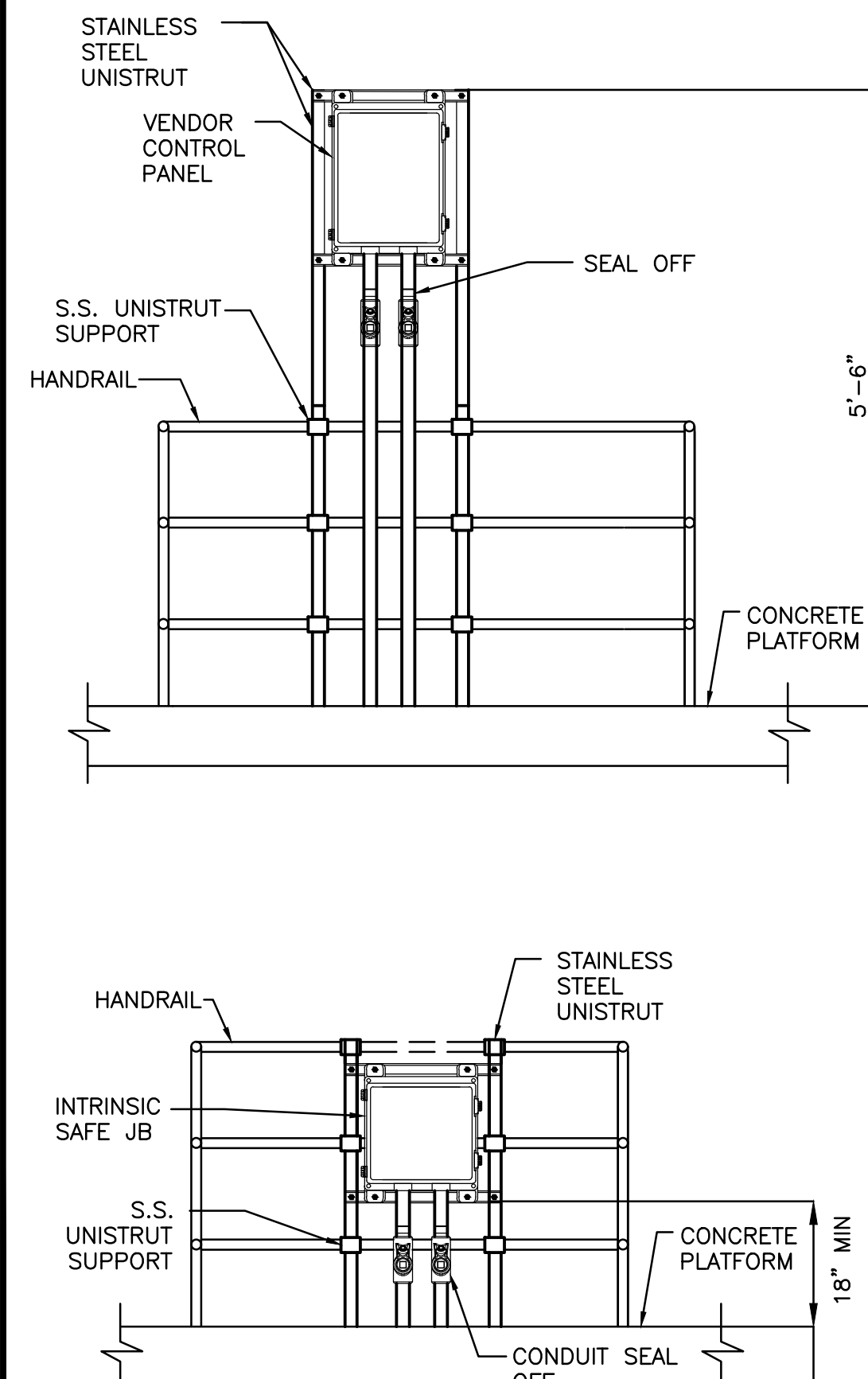
RESIDUAL CHLORINE ANALYZER, TURBIDITY METER, PUMP, AND CONTROLS MOUNTING DETAIL



TYPICAL MAGNETIC FLOW METER MOUNTING DETAIL



ULTRASONIC LEVEL SENSOR TRANSMITTER MOUNTING DETAIL



CONTROL PANEL MOUNTING DETAIL AT SCREEN AND SLUDGE AREAS

JUNCTION BOX MOUNTING DETAIL AT SCREEN AND SLUDGE AREAS

REV#	DATE	DESCRIPTION	BY
A	01/12/18	30% PLANS	AMS
B	03/23/18	60% PLANS	AMS
C	05/25/18	90% PLANS	AMS
D	07/20/18	90% PLANS RESUBMITTAL	MSL
E	09/07/18	FOR BID	MSL
F	06/27/19	REVISIONS PER SITE PLAN REVIEW COMMENTS	MSL

NOT VALID FOR CONSTRUCTION UNLESS SIGNED AND DATED

3790 Dixie Highway NE, Suite D
 Palm Bay, FL 32909
 321.728.3899
 Certificate of Authorization No. 3952

CITY OF PALM BAY, FLORIDA
 PALM BAY SOUTH REGIONAL
 WATER RECLAMATION FACILITY

BIOLOGICAL TREATMENT FACILITY & CHLORINE
 CONTACT BASIN INSTRUMENT DETAILS

PLAN M SCHWAB
 LICENSE No. 61313
 9-1-2018
 STATE OF FLORIDA
 PROFESSIONAL ENGINEER

JOB NO. PBU2123-01L
 SHEET E-26

© Wade Trim Group, Inc. PALM BAY SOUTH REGIONAL WATER RECLAMATION FACILITY