

# CITY OF CANTON, GEORGIA

## OLD BALLGROUND

# SANITARY SEWER REPLACEMENT PHASE II

# AND ETOWAH RIVER TRAIL EXTENSION

### AUGUST, 2020

**JO ELLEN WILSON**  
MAYOR PRO TEM

**SANDRA MCGREW**

**SHAWN TOLAN**

**BILL GRANT**  
MAYOR

**DAVID HATABIAN**  
CITY ENGINEER

**BILLY PEPPERS**  
CITY MANAGER

**NICK ESTES**  
**BROOKE SCHMIDT**

**BEGIN PROJECT:**  
N: 34.228932  
W: 84.499607


**END PROJECT:**  
N: 34.243451  
W: 84.486859

**PROJECT SITE ADDRESS:**  
1149 MARIETTA HIGHWAY  
CANTON, GEORGIA 30114

I CERTIFY UNDER PENALTY OF LAW THAT THIS PLAN WAS PREPARED AFTER A SITE VISIT TO THE LOCATION DESCRIBED HERE-IN BY MYSELF OR MY AUTHORIZED AGENT UNDER MY DIRECT SUPERVISION.

  
\_\_\_\_\_  
William F. Livingston, Jr., Professional Engineer  
GSWCC LEVEL II Certified Design Professional Certification # 21845  
expires Nov. 04, 2021

I CERTIFY UNDER PENALTY OF LAW THAT THIS DOCUMENT AND ALL ATTACHMENTS WERE PREPARED UNDER MY DIRECTION OR SUPERVISION IN ACCORDANCE WITH A SYSTEM DESIGNED TO ASSURE THAT QUALIFIED PERSONNEL PROPERLY GATHER AND EVALUATE THE INFORMATION SUBMITTED BASED UPON MY INQUIRY OF THE PERSON OR PERSONS WHO MANAGE THE SYSTEM OR THOSE PERSONS DIRECTLY RESPONSIBLE FOR GATHERING THE INFORMATION. THE INFORMATION SUBMITTED IS, TO THE BEST OF MY KNOWLEDGE AND BELIEF, TRUE, ACCURATE, AND COMPLETE. I AM AWARE THAT THERE ARE SIGNIFICANT PENALTIES FOR SUBMITTING FALSE INFORMATION, INCLUDING THE POSSIBILITY OF FINE AND IMPRISONMENT FOR KNOWING VIOLATIONS.

  
\_\_\_\_\_  
William F. Livingston, Jr., Professional Engineer  
GSWCC LEVEL II Certified Design Professional Certification # 21845  
expires Nov. 04, 2021

**NOTE:**  
ENGINEER 24-HOUR CONTACT IS BILL LIVINGSTON, (404) 819-2399,  
ATKINS, 1600 RIVEREDGE PARKWAY, SUITE 700, ATLANTA, GA 30328

Primary Permittee:  
The Owner/Developer is :  
City of Canton, Georgia  
110 Academy Street  
Canton, GA 30114  
Phone (770) 704-1500, Fax: (770) 704-1538  
www.canton-georgia.com  
David Hatabian, City Engineer  
david.hatabian@canton-georgia.com

**NOTE:**  
TOTAL DISTURBED ACREAGE = 21.53 ACRES

DRAWING INDEX	
TITLE	SHEET
<b>CONSTRUCTION DRAWINGS</b>	
COVER SHEET	C-01
VICINITY MAP, GENERAL NOTES & DRAWING INDEX	G-01
SANITARY SEWER PLAN & PROFILE SHEETS	S-01 - S-07
EROSION CONTROL PLAN	EC-01 - EC-17
EROSION CONTROL NOTES SHEET	EN-01
EROSION CONTROL CHECKLIST	ECL-01
MISCELLANEOUS DETAILS	D-01 - D-03
EROSION CONTROL DETAILS	D-04 - D-05
LIFT STATION DETAILS	D-06
COMPREHENSIVE MONITORING PLAN	CMP-01 - CMP-02
<b>ETOWAH RIVER PARK TRAIL EXTENSION DRAWINGS</b>	
GENERAL NOTES (TRAIL PLANS)	4-01
TYPICAL SECTIONS	5-01
SUMMARY OF QUANTITIES (TRAIL PLANS)	6-01
CONSTRUCTION LAYOUT PLANS	11-01 - 11-13
PROFILES	16-01 - 16-02
GRADING AND DRAINAGE PLANS	18-01 - 18-13
DRAINAGE PROFILES	22-01 - 22-03
CROSS SECTIONS	23-01 - 23-09
LANDSCAPING PLANS	29-01 - 29-14
RETAINING WALL ENVELOPES	31-01 - 31-02
CONSTRUCTION DETAILS	40-01 - 40-04
CONSTRUCTION DETAILS (PERMA TRACK)	PT01 - PT04
<b>GDOT STANDARDS AND DETAILS</b>	
A3 CONCRETE SIDEWALKS DETAILS CURB CUT (WHEELCHAIR) RAMPS (03-2002)	A3
A4 SETTABLE WARNING SURFACE TRUNCATED CONE SIZE, SPACING AND ALIGNMENT REQUIREMENTS (03-2002)	A4
STANDARD PRECAST DROP INLETS (08-1999)	1019A
STANDARD BRICK MANHOLES (10-1981)	1011A
STANDARD PRECAST REINFORCED CONCRETE MANHOLES (08-1973)	1011-A
4" CONCRETE DITCH PAVING (01-1988)	D-10
STANDARD PIPE CULVERT CONCRETE HEADWALL (08-1999)	1001-B
STANDARD GRAVITY WALL TYPICAL SECTIONS, RAISING HEADWALL, AND TYPICAL PIPE PLUG (08-2016)	9031L
CONSTRUCTION DETAIL DITCH BACK OF RETAINING WALL, SWALE DITCHES, BIRAP DITCH (08-2011)	D-49
STANDARD CONCRETE CURB & GUTTER CONCRETE CURBS, CONCRETE MEDIAN (10-2011)	9032B
STANDARD GUARDRAIL WARRANT GUIDES (12-1999)	4000W
STANDARD "W" BEAM GUARDRAIL 31 INCH GUARDRAIL HEIGHT (08-2011)	4380
STANDARD POST AND OFFSET BLOCKS FOR "W" & "T" BEAM GUARDRAIL, 31 INCH GUARDRAIL HEIGHT (08-2011)	4381
STANDARD GUARDRAIL TERMINALS TYPE 12A, 12B, AND 12C, 31 INCH GUARDRAIL HEIGHT (08-2011)	4384
STANDARD "T" BEAM GUARDRAIL CONNECTION TO 31 INCH HEIGHT "W" BEAM (08-2011)	4385
STANDARD "W" BEAM GUARDRAIL TRANSITION 27 INCH GUARDRAIL TO 31 INCH GUARDRAIL HEIGHT (08-2011)	4390
SPECIAL DETAIL PARAPET RETAINING WALL TYPES P1, P2, AND P3 (12-2017)	PRW-1
STANDARD MEDIAN DROP INLET (PRE-CAST OR BUILT-IN-PLACE) (08-1991)	9031-S
MEDIAN DRAIN DROP INLETS (02-88)	D-1
STANDARD FLARED END SECTIONS FOR PIPES	1120

PREPARED BY:  
**ATKINS**

1600 Riveredge Parkway NW, Suite 700  
Atlanta, Ga 30328  
P: 770-933-0280

PROJECT No: 100065927



**ATKINS**  
1600 Riveredge Parkway, Suite 700  
Atlanta Ga 30328  
P: 770-933-0280

DATE	REVISION	PROJ. NO.:	DESIGNED BY:	DRAWN BY:	CHECKED BY:	APPROVED BY:	DATE:	SCALE:
		100065927	W.F.L.	M.R.T.	R.E.B.	W.F.L.	OCTOBER, 2019	NTS

CITY OF CANTON, GEORGIA  
OLD BALLGROUND SANITARY SEWER REPLACEMENT PHASE II  
AND ETOWAH RIVER TRAIL EXTENSION  
COVER

SHEET NO.  
**C-01**  
100065927







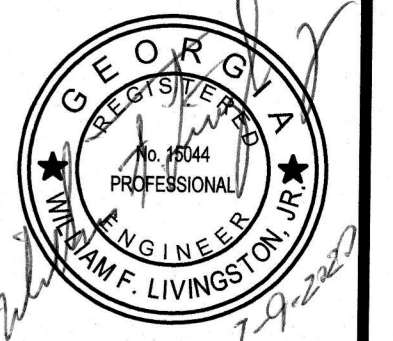
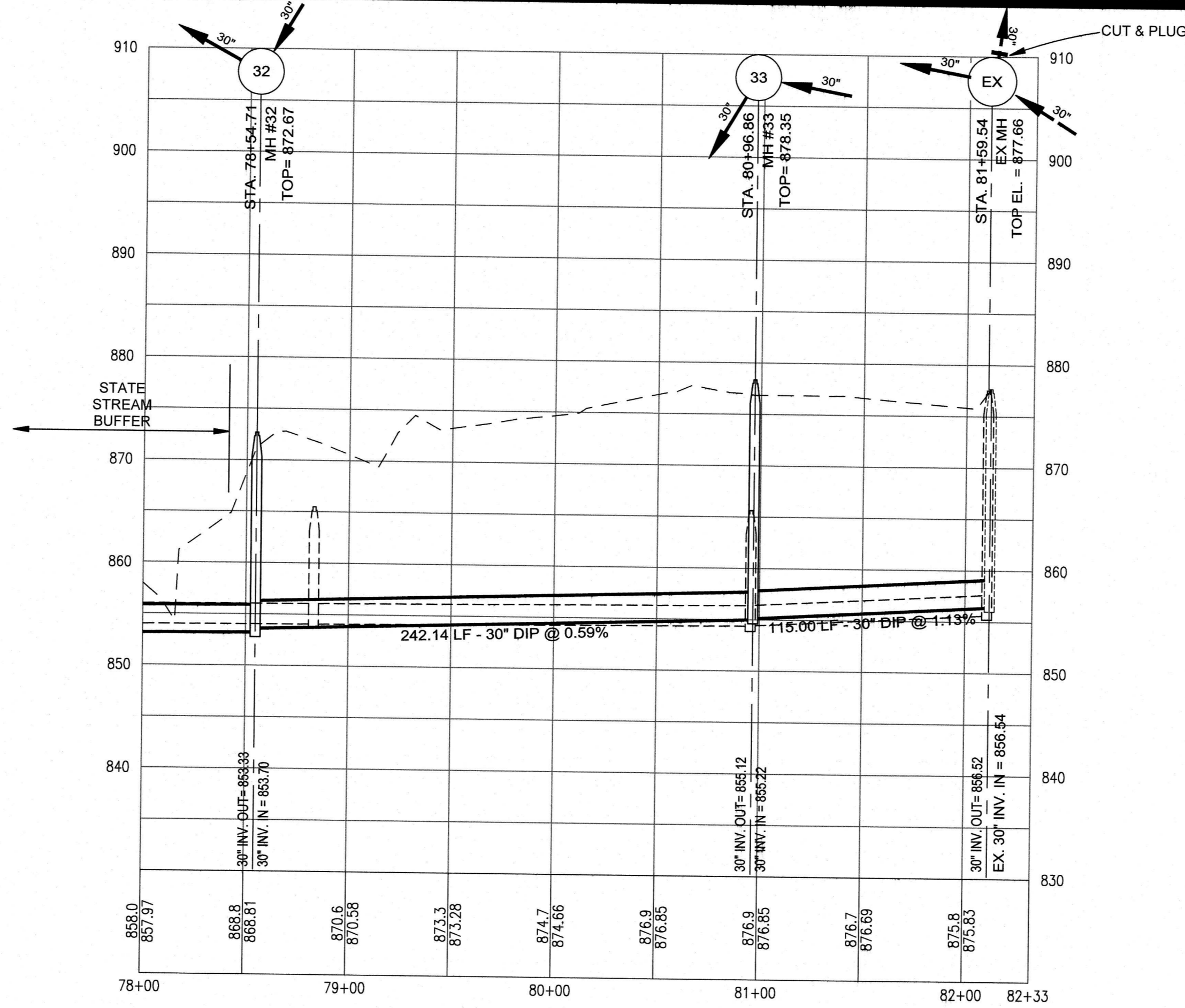
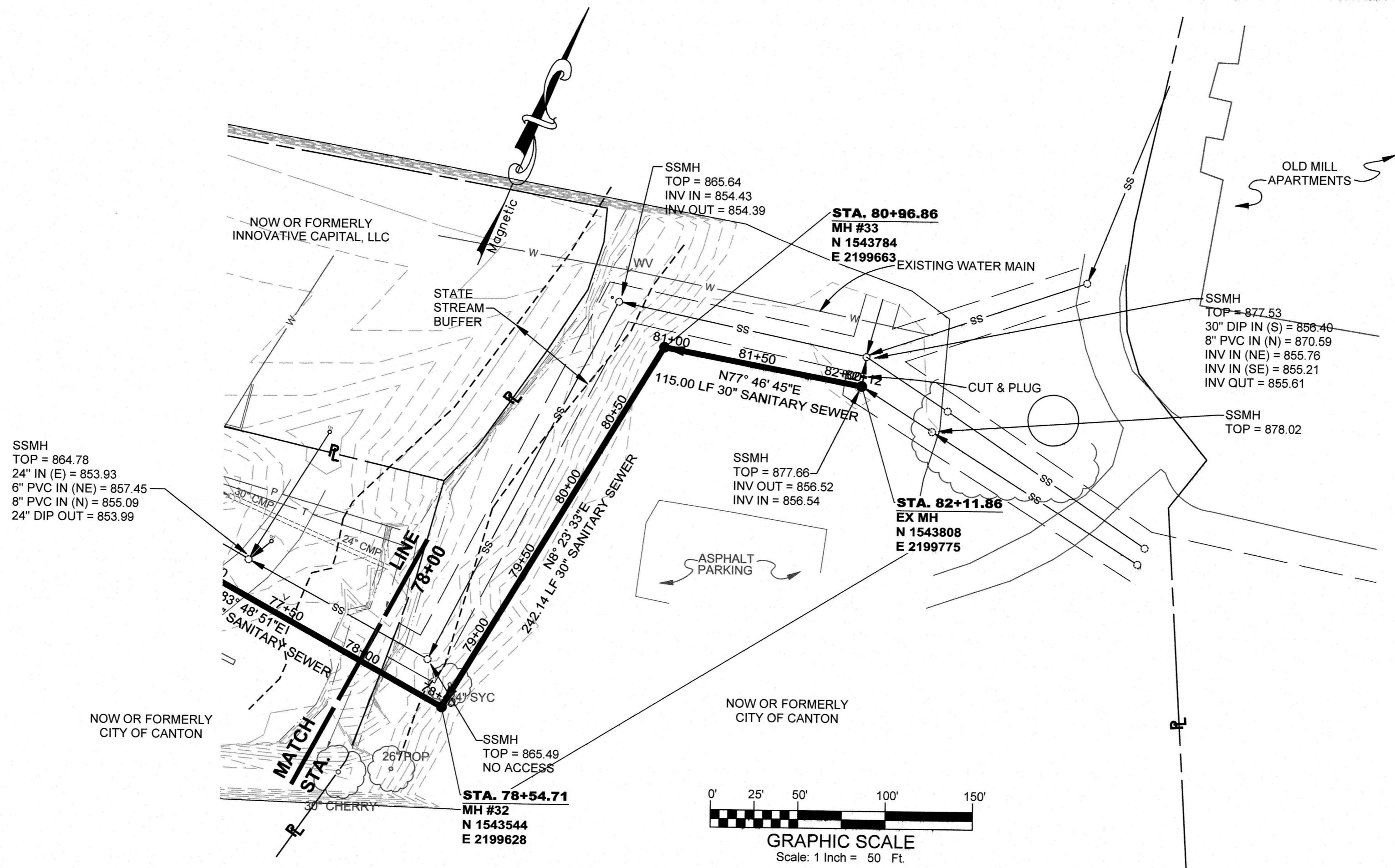












**ATKINS**  
 1600 Riveridge Parkway, Suite 700  
 Atlanta, GA 30328  
 P: 770-833-0280

DATE	REVISION

PROJ. NO.: 100065927
DESIGNED BY: W.F.L.
DRAWN BY: M.R.T.
CHECKED BY: R.E.B.
APPROVED BY: W.F.L.
DATE: AUG. 2019
SCALE: AS SHOWN

CITY OF CANTON, GEORGIA  
 OLD BALLGROUND SANITARY SEWER PHASE 2 &  
 RIVER TRAIL EXTENSION  
**SANITARY SEWER PLAN**

SHEET NO.  
**S-07**  
 100065927