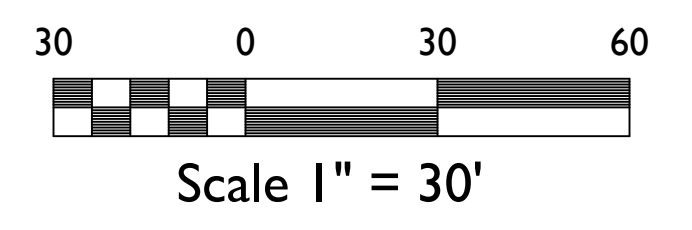


LAYOUT/UTILITY LEGEND	
	EXISTING WATER LINE
	EXISTING STORM SEWER LINE
	EXISTING CURB AND GUTTER
	EXISTING FENCE
	PROPOSED FENCE
	SS EXISTING SANITARY SEWER LINE
	SS PROPOSED SANITARY SEWER LINE
	PROPOSED CONCRETE
	EXISTING LIGHT POLE
	EXISTING WATER VALVE
	SSMH SANITARY SEWER MANHOLE
	SSCO CLEANOUT
	WV WATER VALVE

- SITE UTILITY NOTES:**
- ALL SANITARY SEWER INSTALLATION SHALL BE PER THE CLAYTON COUNTY WATER AUTHORITY STANDARDS SPECIFICATIONS FOR WATER DISTRIBUTION SYSTEMS AND SANITARY SEWER SYSTEMS LATEST EDITION. THESE SPECIFICATION CAN BE OBTAINED THROUGH THE CLAYTON COUNTY WATER AUTHORITY LOCATED AT 1600 BATTLE CREEK ROAD, MORROW, GEORGIA 30260 OR ONLINE AT WWW.CCWALUS.COM
 - DUCTILE IRON (PUSH-ON) PIPE EIGHT (8) INCHES IN DIAMETER AND LARGER SHALL BE CLASS 50, UNLESS NOTED OTHERWISE, IN ACCORDANCE WITH ANS/AWWA C151/A21.51, LATEST REVISIONS.
 - DUCTILE IRON FITTINGS FOR USE WITH PUSH-ON JOINT PIPE SHALL BE STANDARD MECHANICAL, COMPACT SERIES, WITH A MINIMUM PRESSURE RATING OF 250 PSI IN ACCORDANCE WITH ANS/AWWA C110/A21.10 AND C153/A21.53, LATEST REVISIONS.
 - DUCTILE IRON PIPE AND FITTINGS USED IN SANITARY SEWER SYSTEMS SHALL BE CEMENT LINED IN ACCORDANCE WITH ANS/AWWA C104/A21.4, LATEST REVISION AND CEMENT LINING SEALED WITH ASPHALT IN ACCORDANCE WITH ANS 21.10, LATEST REVISION AND AWWA C110, C115, C151 OR C153, LATEST REVISIONS.
 - PVC PIPE USED AS SEWER SHALL BE SDR 26 PUSH-ON JOINT TYPE WITH O-RINGS IN ACCORDANCE WITH ASTM 3034. GASKETS SHALL BE PLAIN RUBBER.
 - PVC FITTINGS SHALL BE IN ACCORDANCE WITH ASTM 3034.
 - ALL GRADES TO BE RETURNED TO EXISTING GRADES.

OWNER/OPERATOR/24 HR. CONTACT:
GEORGIA POWER COMPANY
 241 RALPH MCGILL BOULEVARD NE
 BN 10041
 ATLANTA, GA 30308-3374
 CONTACT: BRYAN HARRIS
 (404) 506-4932

ENGINEER:
AEC, INC.
 50 WARM SPRING CIRCLE
 ROSWELL, GA 30075
 CONTACT: MARK VAN DE WATER
 (770) 641-1942
 LEVEL II CERT. # 6960



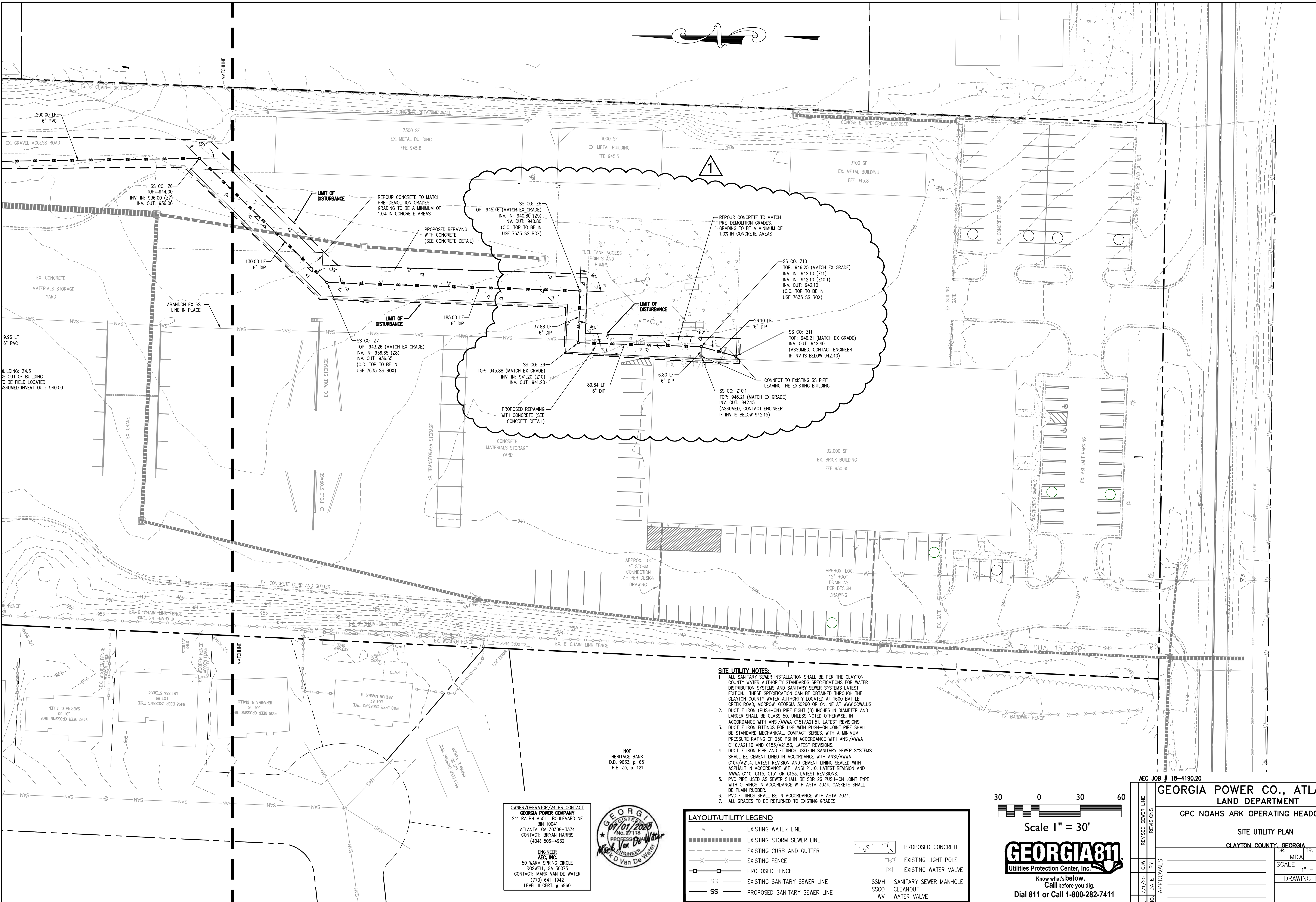
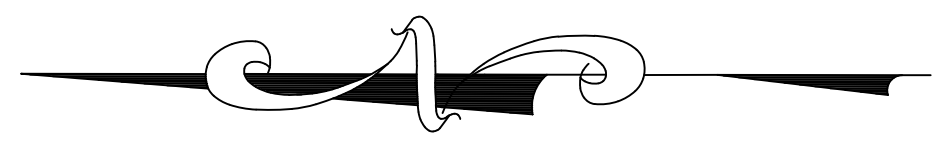
GEORGIA811
 Utilities Protection Center, Inc.
 Know what's below.
 Call before you dig.
 Dial 811 or Call 1-800-282-7411

AEC JOB # 18-4190.20

GEORGIA POWER CO., ATLANTA, GA.
LAND DEPARTMENT
 GPC NOAHS ARK OPERATING HEADQUARTERS

SITE UTILITY PLAN
 CLAYTON COUNTY, GEORGIA

REVISED SEWER LINE	DR.	MDA	TR.	CHK	CJW/MDV
NO. DATE	BY	DATE	SCALE	DATE	
1 7/1/20	CJM	4/14/2020	1" = 30'	4/14/2020	
APPROVALS				DRAWING No.	SHEET No.
					5 OF 16



- SITE UTILITY NOTES:**
- ALL SANITARY SEWER INSTALLATION SHALL BE PER THE CLAYTON COUNTY WATER AUTHORITY STANDARDS SPECIFICATIONS FOR WATER DISTRIBUTION SYSTEMS AND SANITARY SEWER SYSTEMS LATEST EDITION. THESE SPECIFICATION CAN BE OBTAINED THROUGH THE CLAYTON COUNTY WATER AUTHORITY LOCATED AT 1600 BATTLE CREEK ROAD, MORROW, GEORGIA 30260 OR ONLINE AT WWW.CCWALUS
 - DUCTILE IRON (PUSH-ON) PIPE EIGHT (8) INCHES IN DIAMETER AND LARGER SHALL BE CLASS 50, UNLESS NOTED OTHERWISE, IN ACCORDANCE WITH ANSI/AWWA C151/A21.51, LATEST REVISIONS.
 - DUCTILE IRON FITTINGS FOR USE WITH PUSH-ON JOINT PIPE SHALL BE STANDARD MECHANICAL, COMPACT SERIES, WITH A MINIMUM PRESSURE RATING OF 250 PSI IN ACCORDANCE WITH ANSI/AWWA C110/A21.10 AND C153/A21.53, LATEST REVISIONS.
 - DUCTILE IRON PIPE AND FITTINGS USED IN SANITARY SEWER SYSTEMS SHALL BE CEMENT LINED IN ACCORDANCE WITH ANSI/AWWA C104/A21.4, LATEST REVISION AND CEMENT LINING SEALED WITH ASPHALT IN ACCORDANCE WITH ANSI 21.10, LATEST REVISION AND AWWA C10, C15, C151 OR C153, LATEST REVISIONS.
 - PVC PIPE USED AS SEWER SHALL BE SDR 26 PUSH-ON JOINT TYPE WITH O-RINGS IN ACCORDANCE WITH ASTM 3034. GASKETS SHALL BE PLAIN RUBBER.
 - PVC FITTINGS SHALL BE IN ACCORDANCE WITH ASTM 3034.
 - ALL GRADES TO BE RETURNED TO EXISTING GRADES.

NOF
HERITAGE BANK
D.B. 9633, p. 651
P.B. 35, p. 121

OWNER/OPERATOR/24 HR CONTACT
GEORGIA POWER COMPANY
241 RALPH MCGILL BOULEVARD NE
BN 10041
ATLANTA, GA 30308-3374
CONTACT: BRYAN HARRIS
(404) 506-4932

ENGINEER
AEC, INC.
50 WARM SPRING CIRCLE
ROSWELL, GA 30076
CONTACT: MARK VAN DE WATER
(770) 641-1942
LEVEL II CERT. # 6960



LAYOUT/UTILITY LEGEND

	EXISTING WATER LINE		PROPOSED CONCRETE
	EXISTING STORM SEWER LINE		EXISTING LIGHT POLE
	EXISTING CURB AND GUTTER		EXISTING WATER VALVE
	EXISTING FENCE		SANITARY SEWER MANHOLE
	PROPOSED FENCE		CLEANOUT
	EXISTING SANITARY SEWER LINE		WATER VALVE
	PROPOSED SANITARY SEWER LINE		



GEORGIA811
Utilities Protection Center, Inc.
Know what's below.
Call before you dig.
Dial 811 or Call 1-800-282-7411

AEC JOB # 18-4190.20

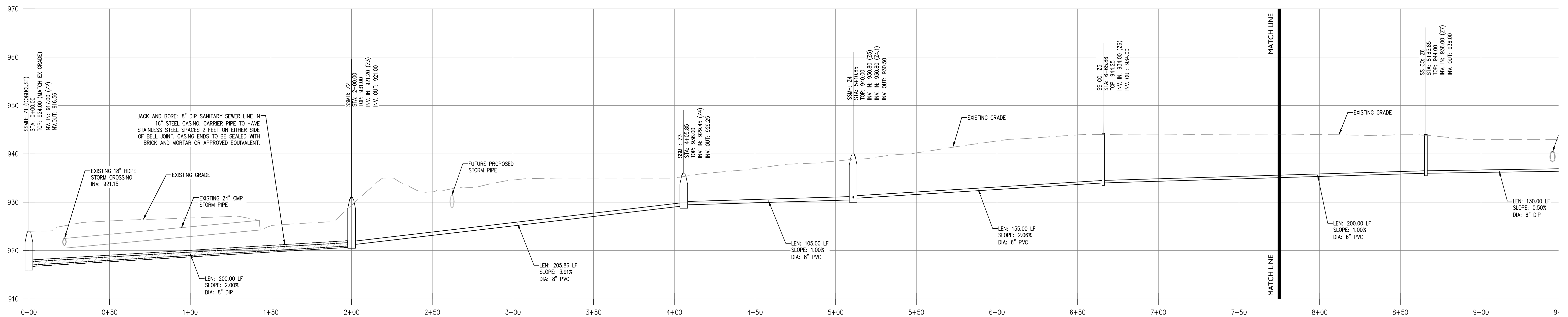
GEORGIA POWER CO., ATLANTA, GA.
LAND DEPARTMENT

GPC NOAHS ARK OPERATING HEADQUARTERS

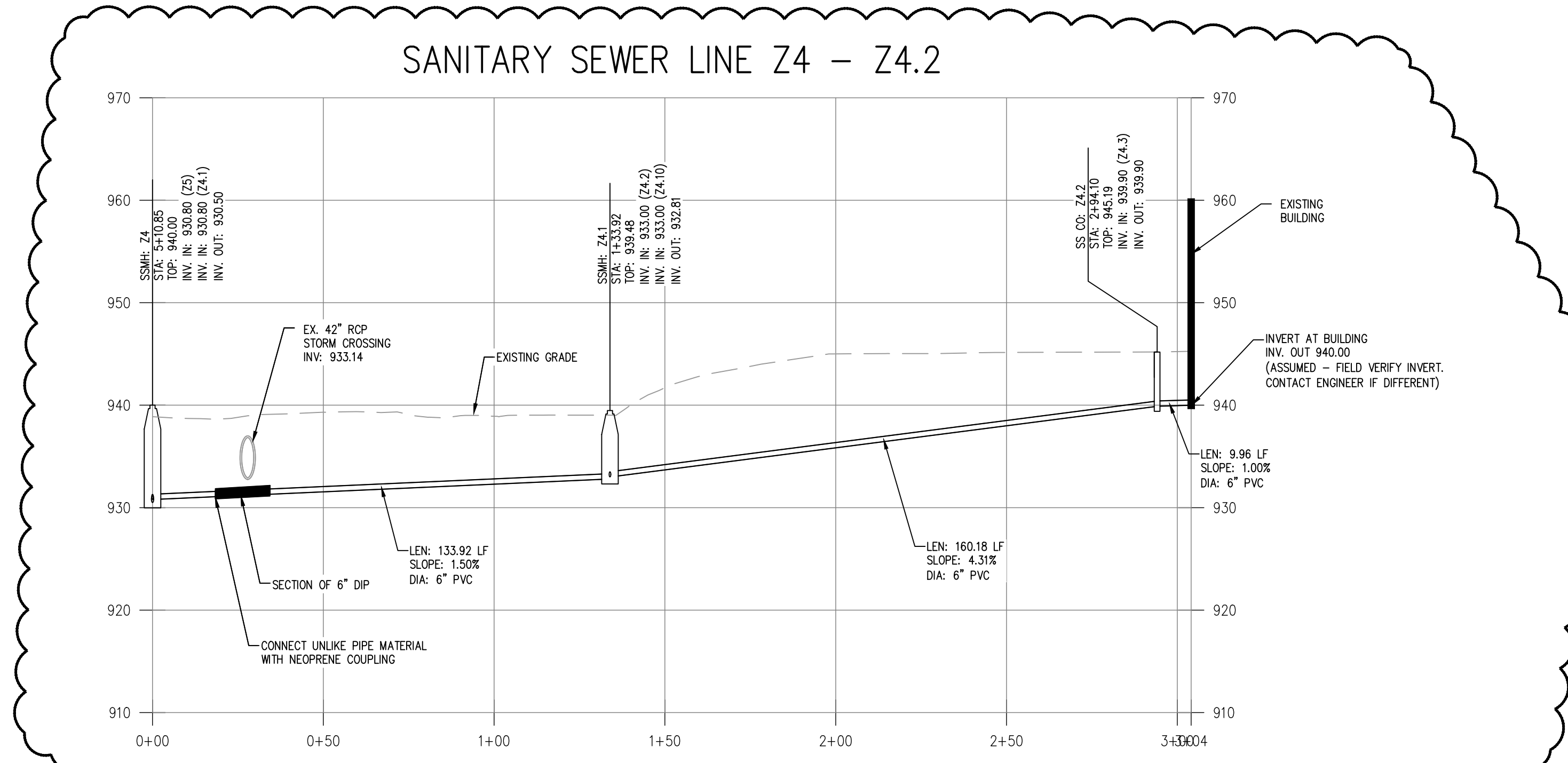
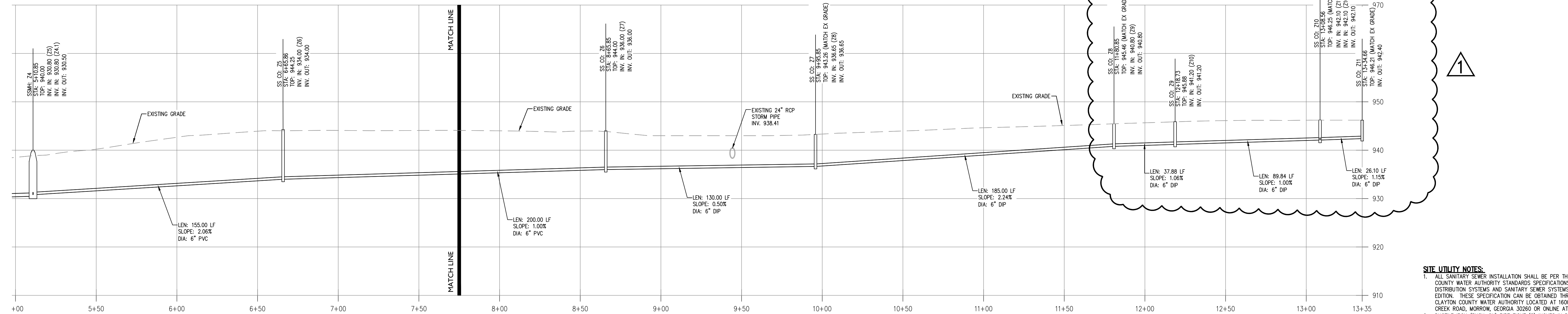
SITE UTILITY PLAN
CLAYTON COUNTY, GEORGIA

DR.	MDA	TR.	CHK
			CJW/MDV
SCALE		DATE	
1" = 30'		4/14/2020	
DRAWING No.		SHEET No.	
		6 OF 16	

SANITARY SEWER SERVICE LINE Z1 -Z11



SANITARY SEWER SERVICE LINE Z1 -Z11



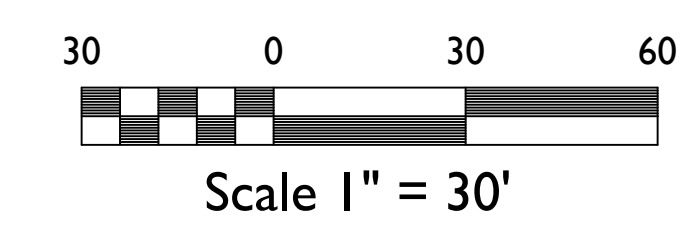
SANITARY SEWER LINE Z4 - Z4.2

LEGEND:

— — PROPOSED GRADE
 - - - - - EXISTING GRADE

OW - OIL-WATER SEPARATOR
 MH - SANITARY SEWER MANHOLE
 SSCO - SANITARY SEWER CLEAN OUT
 PVC - POLYVINYL CHLORIDE PIPE
 DIP - DUCTILE IRON PIPE
 STA - STATION

SCALE:
 HORIZONTAL SCALE: 1" = 30'
 VERTICAL SCALE: 1" = 10'



- SITE UTILITY NOTES:**
- ALL SANITARY SEWER INSTALLATION SHALL BE PER THE CLAYTON COUNTY WATER AUTHORITY STANDARDS SPECIFICATIONS FOR WATER DISTRIBUTION SYSTEMS AND SANITARY SEWER SYSTEMS LATEST EDITION. THESE SPECIFICATION CAN BE OBTAINED THROUGH THE CLAYTON COUNTY WATER AUTHORITY LOCATED AT 1600 BATTLE CREEK ROAD, MORROW, GEORGIA 30260 OR ONLINE AT WWW.CCWALUS.COM
 - DUCTILE IRON (PUSH-ON) PIPE EIGHT (8) INCHES IN DIAMETER AND LARGER SHALL BE CLASS 50, UNLESS NOTED OTHERWISE, IN ACCORDANCE WITH ANSI/AWWA C151/A21.51, LATEST REVISIONS.
 - DUCTILE IRON FITTINGS FOR USE WITH PUSH-ON JOINT PIPE SHALL BE STANDARD MECHANICAL, COMPACT SERIES, WITH A MINIMUM PRESSURE RATING OF 250 PSI IN ACCORDANCE WITH ANSI/AWWA C110/A21.10 AND C153/A21.53, LATEST REVISIONS.
 - DUCTILE IRON PIPE AND FITTINGS USED IN SANITARY SEWER SYSTEMS SHALL BE CEMENT LINED IN ACCORDANCE WITH ANSI/AWWA C104/A21.4, LATEST REVISION AND CEMENT LINING SEALED WITH ASPHALT IN ACCORDANCE WITH ANSI 21.10, LATEST REVISION AND AWWA C110, C115, C151 OR C153, LATEST REVISIONS.
 - PVC PIPE USED AS SEWER SHALL BE SDR 26 PUSH-ON JOINT TYPE WITH O-RINGS IN ACCORDANCE WITH ASTM 3034. GASKETS SHALL BE PLAIN RUBBER.
 - PVC FITTINGS SHALL BE IN ACCORDANCE WITH ASTM 3034.
 - ALL GRADES TO BE RETURNED TO EXISTING GRADES.

OWNER/OPERATOR/24 HR. CONTACT:
GEORGIA POWER COMPANY
 241 RALPH MCGILL BOULEVARD NE
 BIN 10041
 ATLANTA, GA 30339-3374
 CONTACT: BRYAN HARRIS
 (404) 506-4932

ENGINEER:
AEC, INC.
 50 WARM SPRING CIRCLE
 ROSWELL, GA 30075
 CONTACT: MARK VAN DE WATER
 (770) 641-1942
 LEVEL II CERT. # 6960



AEC JOB # 18-4190.20
 Dial 811 or Call 1-800-282-7411

GEORGIA POWER CO., ATLANTA, GA.
LAND DEPARTMENT
 GPC NOAHS ARK OPERATING HEADQUARTERS

SEWER PROFILE
 CLAYTON COUNTY, GEORGIA

DR. MDA TR. CRK. CJW/MDV

SCALE: 1" = 20' DATE: 4/14/2020

DRAWING No. SHEET No.

7 OF 16