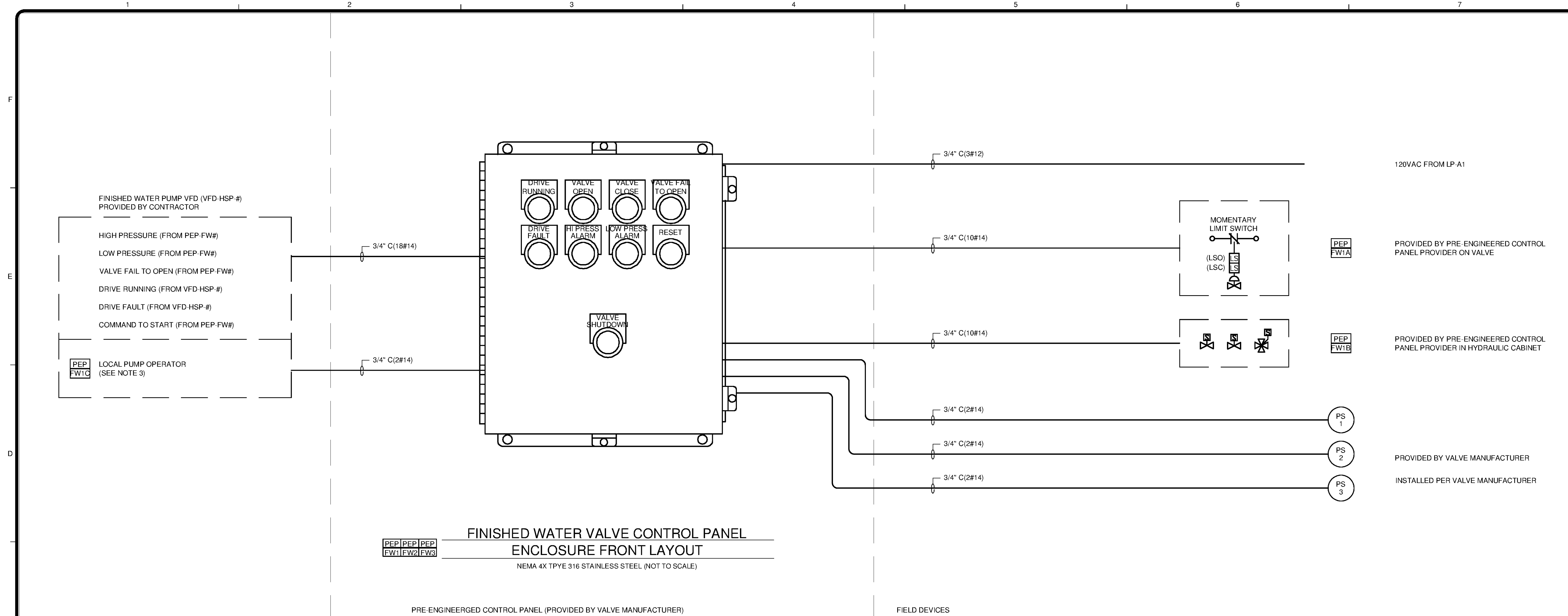


10/17/2014 10:33:39 AM - P:\IER\1740\200-11740-10003\CAD\SHEETFILES\TREATMENT PLANT\WTP-14601 FINISHED WATER VALVE CP.DWG - CALZARETTA, TIMOTHY



PEP FW1 PEP FW2 PEP FW3

**FINISHED WATER VALVE CONTROL PANEL**  
**ENCLOSURE FRONT LAYOUT**  
 NEMA 4X TPYE 316 STAINLESS STEEL (NOT TO SCALE)

PRE-ENGINEERED CONTROL PANEL (PROVIDED BY VALVE MANUFACTURER)

FIELD DEVICES

- NOTES:**
1. TYPICAL OF 3 PRE-ENGINEERED PANELS, 3 FUTURE. PEP-FW1 AND ASSOCIATED EQUIPMENT IS SHOWN.
  2. WIRE AND CONDUIT PROVIDED BY CONTRACTOR.
  3. ROUTE WIRE FROM PEP-FW# THROUGH VFD TO OPEN-REMOTE SWITCH ON LOCAL PUMP OPERATOR.

**TETRA TECH**

www.tetrattech.com

101 QUALITY CIRCLE, SUITE 140  
HUNTSVILLE, ALABAMA 35806  
PHONE: (256) 424-4077 FAX: (256) 424-4097

BID SET

PROVIDED BY PRE-ENGINEERED CONTROL PANEL PROVIDER ON VALVE

PROVIDED BY PRE-ENGINEERED CONTROL PANEL PROVIDER IN HYDRAULIC CABINET

PROVIDED BY VALVE MANUFACTURER

INSTALLED PER VALVE MANUFACTURER

BY	DATE	MARK	DESCRIPTION

HUNTSVILLE UTILITIES  
 SOUTHEAST WATER TREATMENT PLANT  
**FINISHED WATER VALVE CONTROL PANEL**

Project No.:	200-11740-10003
Designed By:	CSW
Drawn By:	TAC
Checked By:	WAP

I-4601