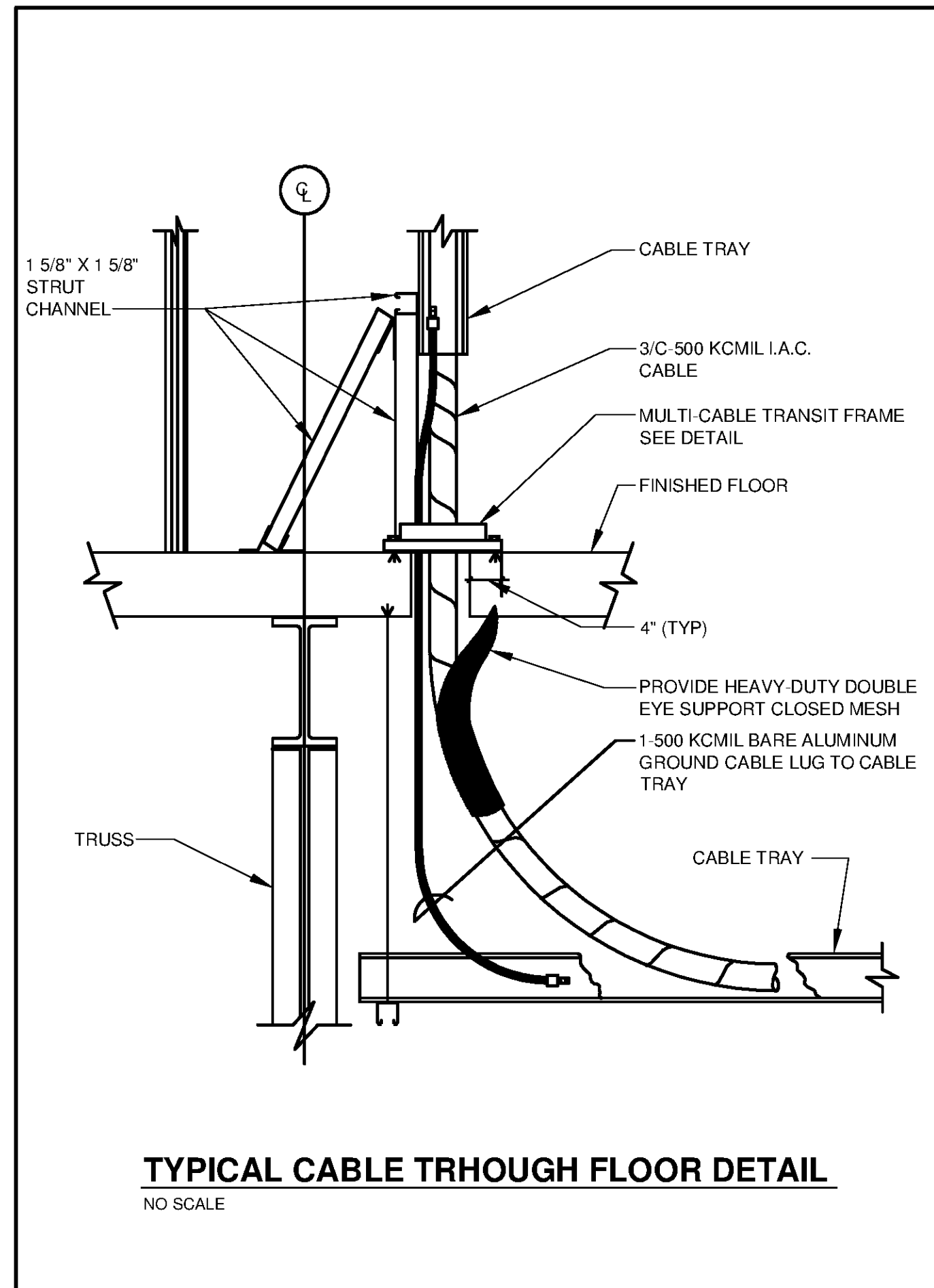
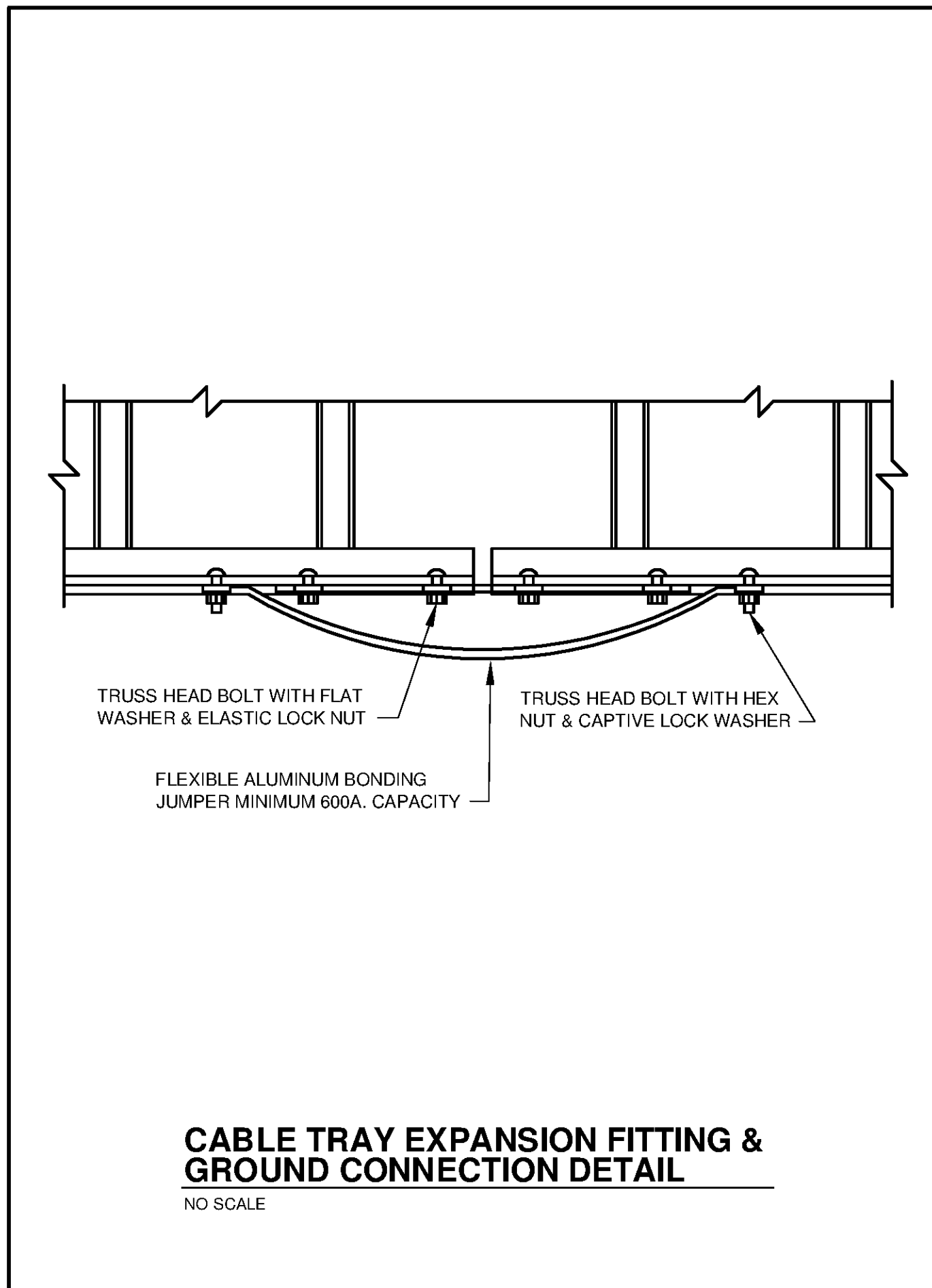


10/17/2014 11:06:05 AM - P:\IER11740\200-11740-10003\CAD\SHEETFILES\TREATMENT PLANT\WTP E 9609 ELECTRICAL DETAILS.DWG - CALZARETTA, TIMOTHY



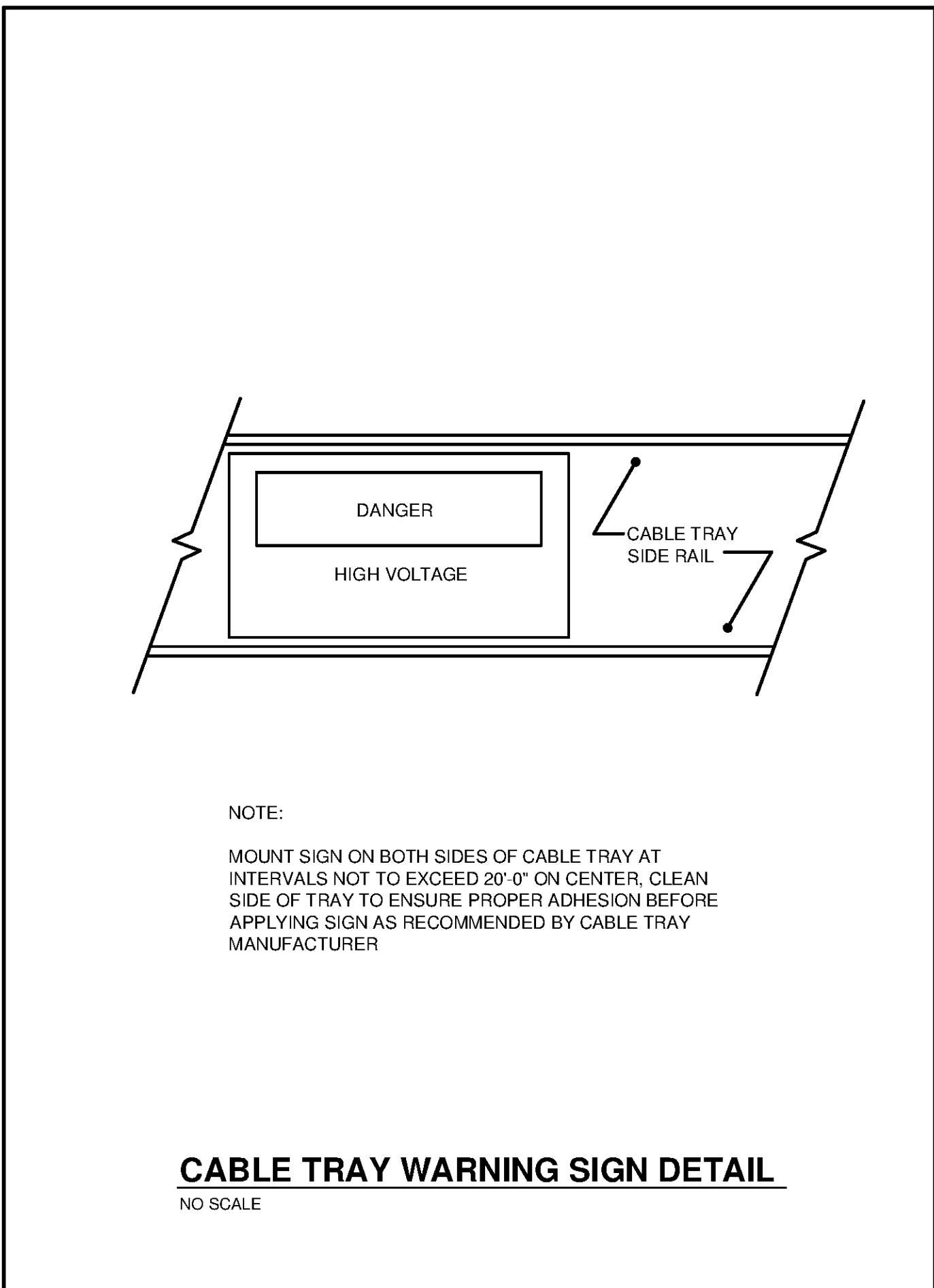
TYPICAL CABLE THROUGH FLOOR DETAIL

NO SCALE



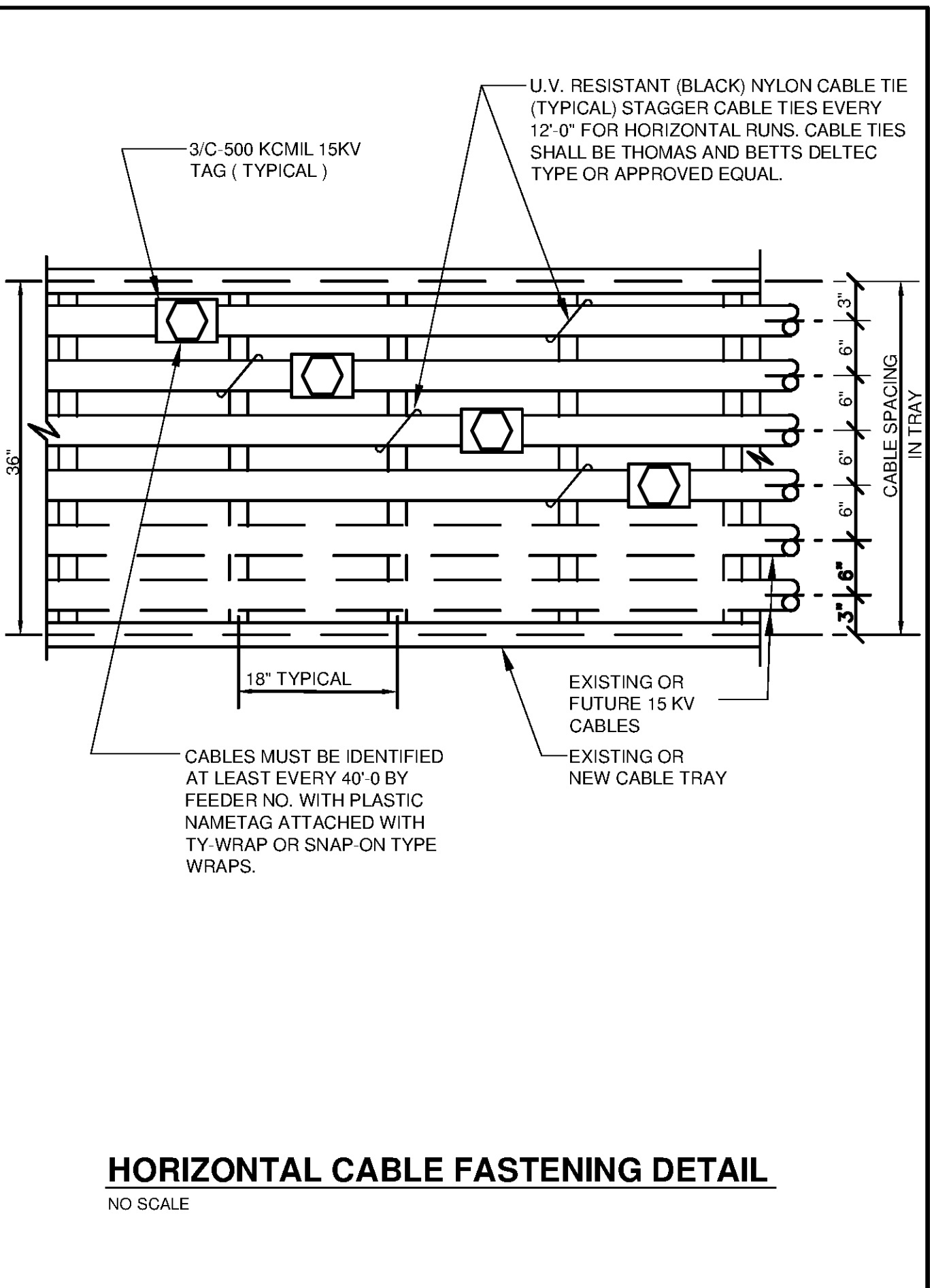
CABLE TRAY EXPANSION FITTING & GROUND CONNECTION DETAIL

NO SCALE



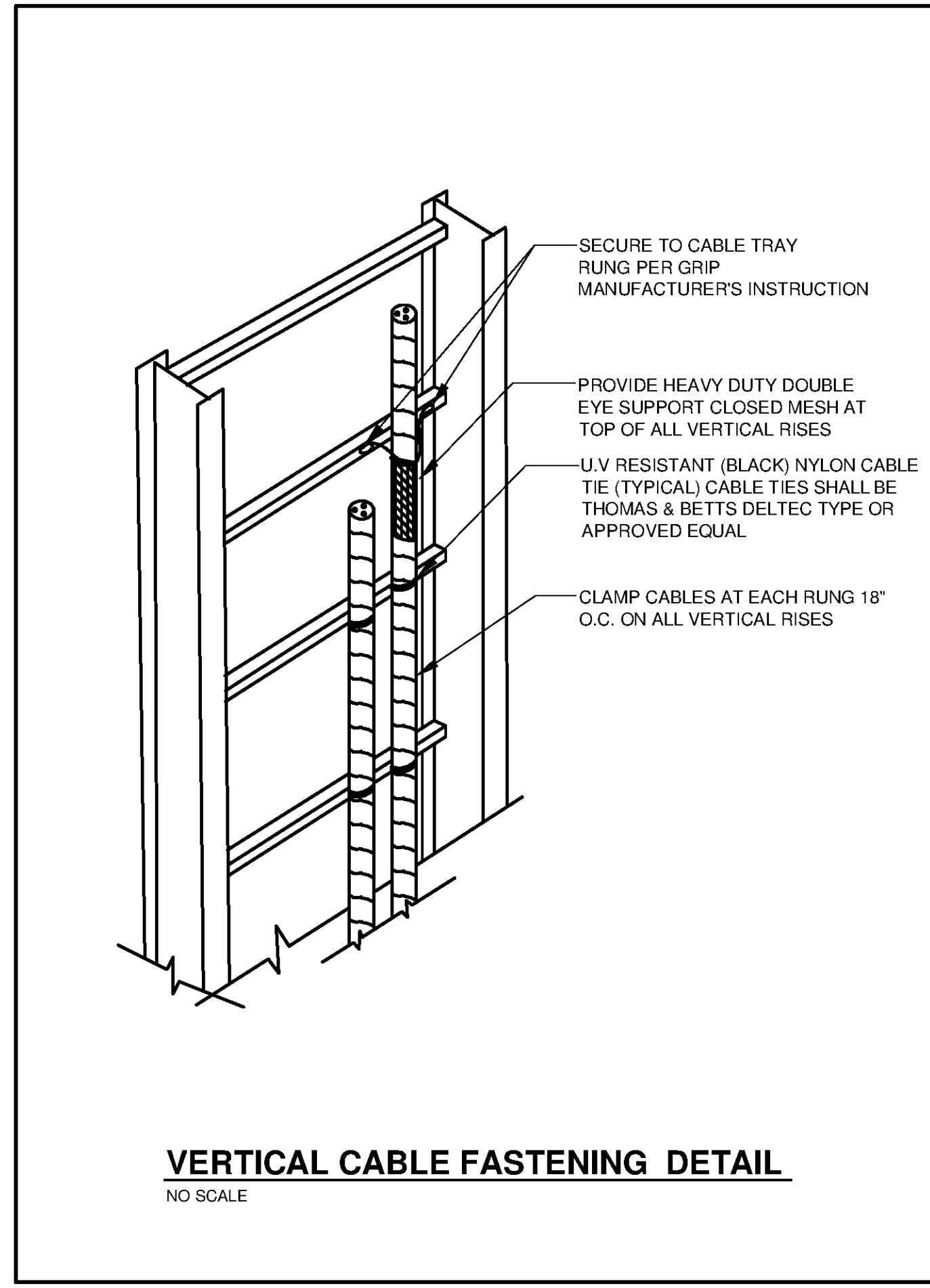
CABLE TRAY WARNING SIGN DETAIL

NO SCALE



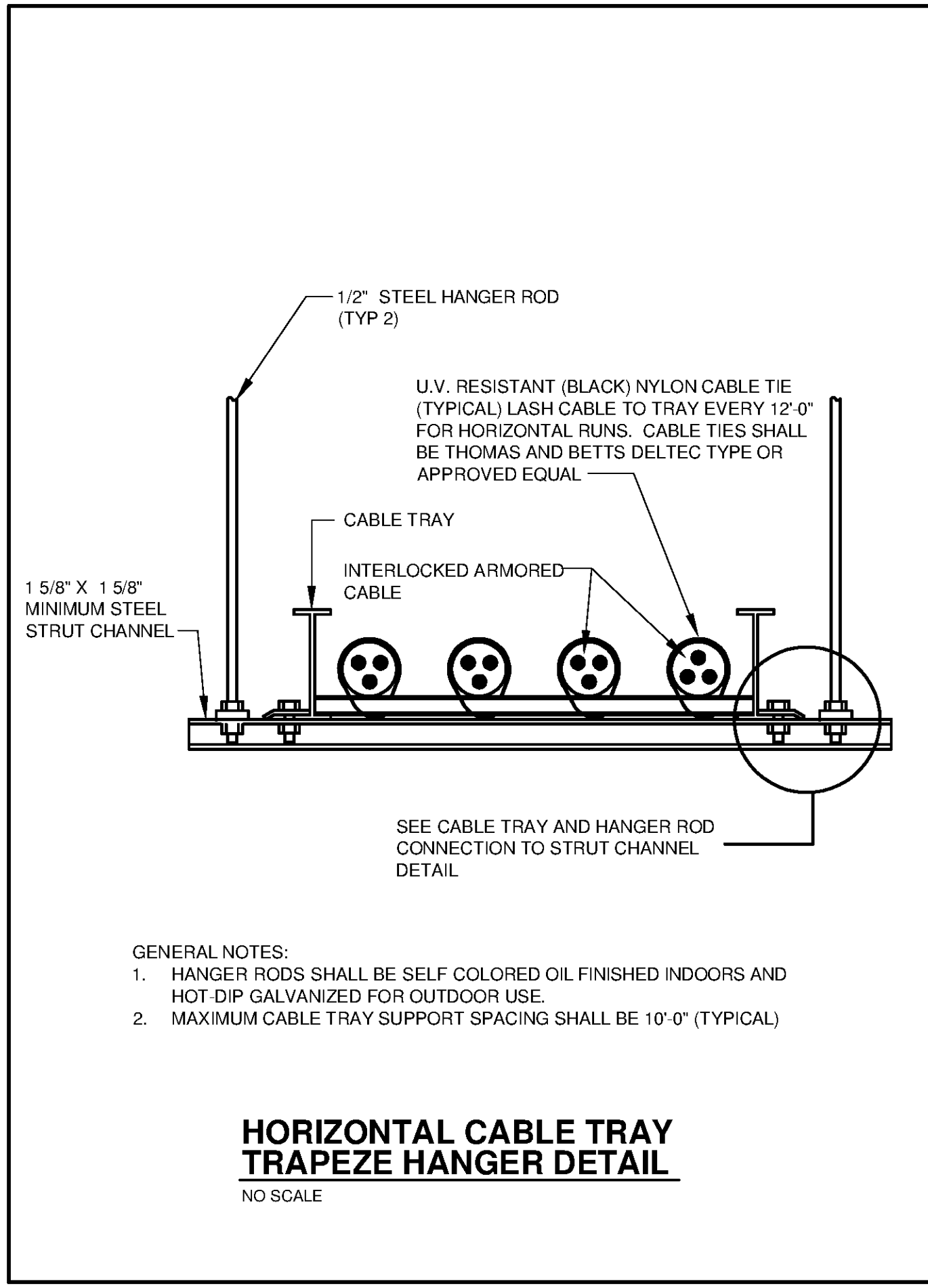
HORIZONTAL CABLE FASTENING DETAIL

NO SCALE



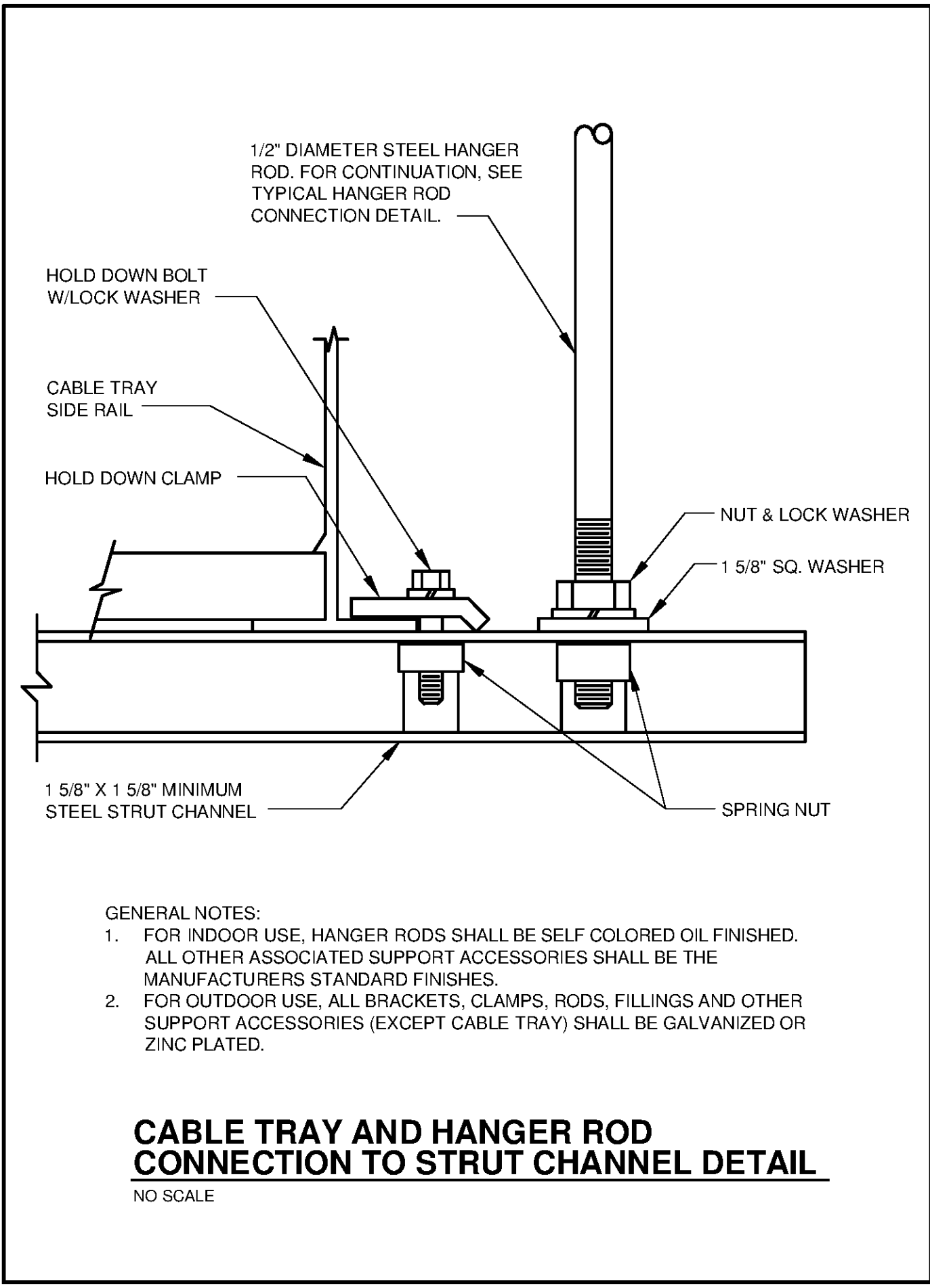
VERTICAL CABLE FASTENING DETAIL

NO SCALE



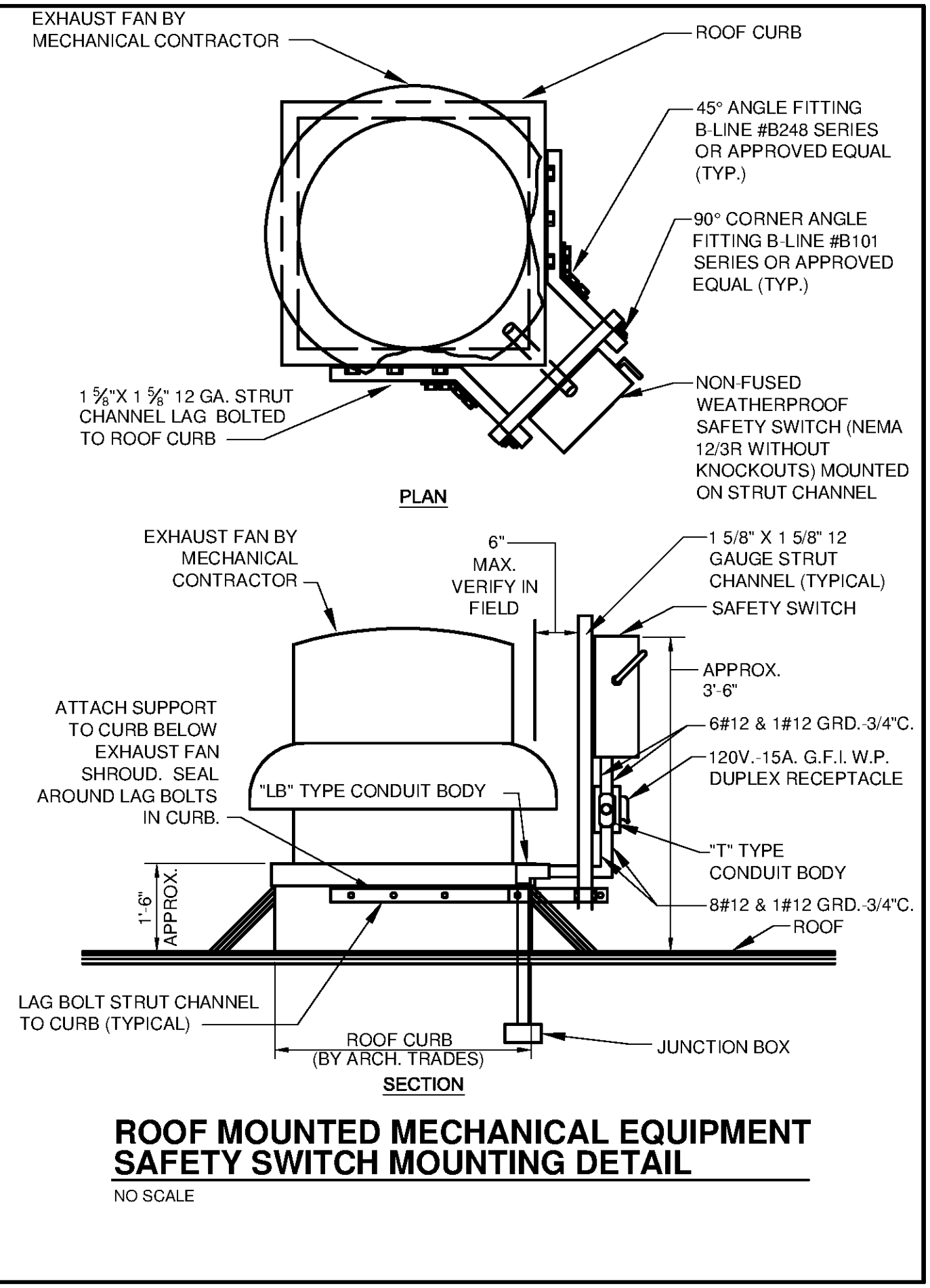
HORIZONTAL CABLE TRAY TRAPEZE HANGER DETAIL

NO SCALE



CABLE TRAY AND HANGER ROD CONNECTION TO STRUT CHANNEL DETAIL

NO SCALE



ROOF MOUNTED MECHANICAL EQUIPMENT SAFETY SWITCH MOUNTING DETAIL

NO SCALE

TETRA TECH
www.tetra-tech.com
101 QUALITY CIRCLE, SUITE 140
HUNTSVILLE, ALABAMA 35806
PHONE: (256) 424-4077 FAX: (256) 424-4097

BID SET
Professional Engineer
No. 21939
Professional Seal
T. Andrew G. Moore
Alabama State Board of Professional Engineers

MARK	DATE	DESCRIPTION

HUNTSVILLE UTILITIES
SOUTHEAST WATER TREATMENT PLANT
ELECTRICAL DETAILS

Project No.: 200-11740-10003
Designed By: CSW
Drawn By: TAC
Checked By: DAB

E-9510