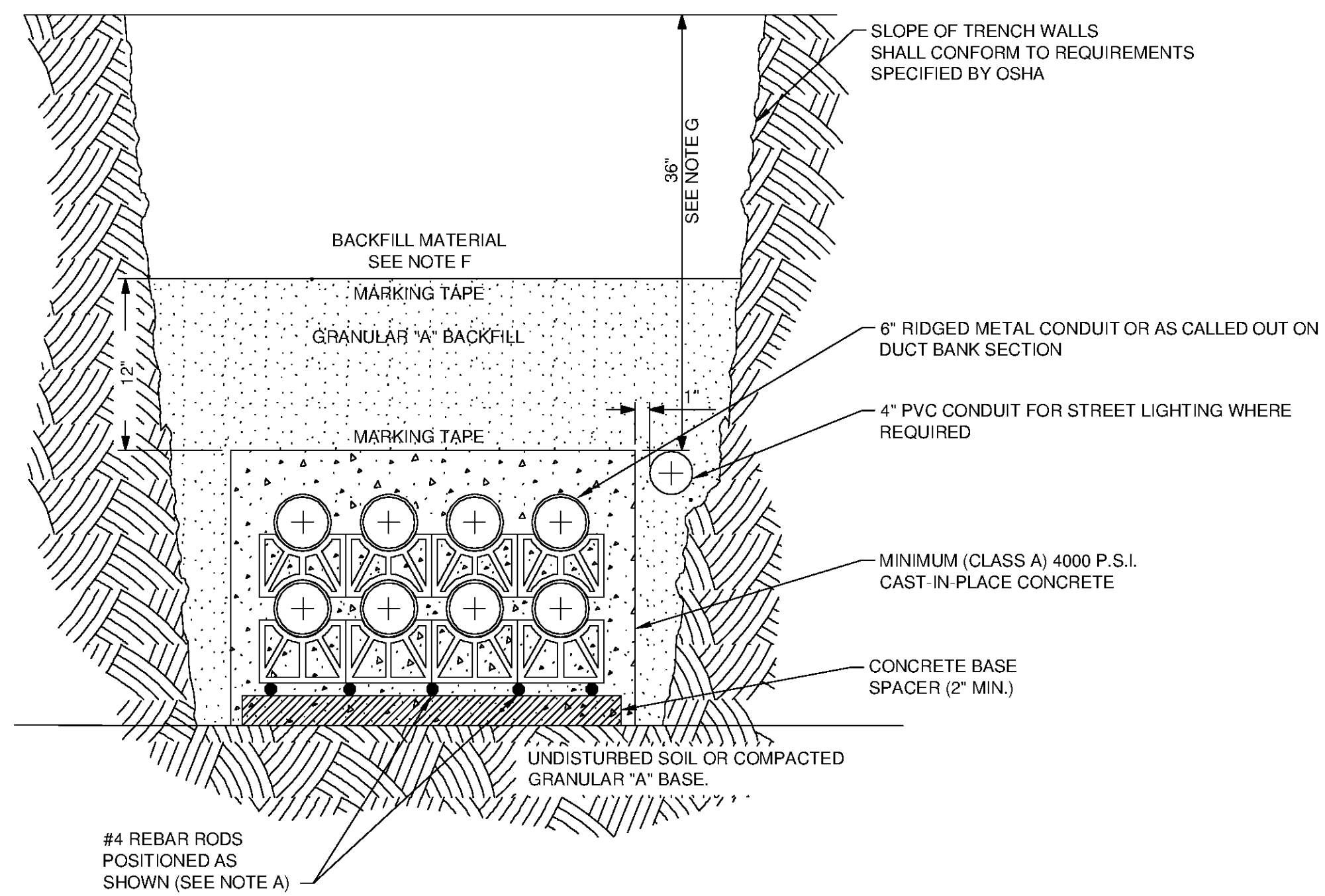


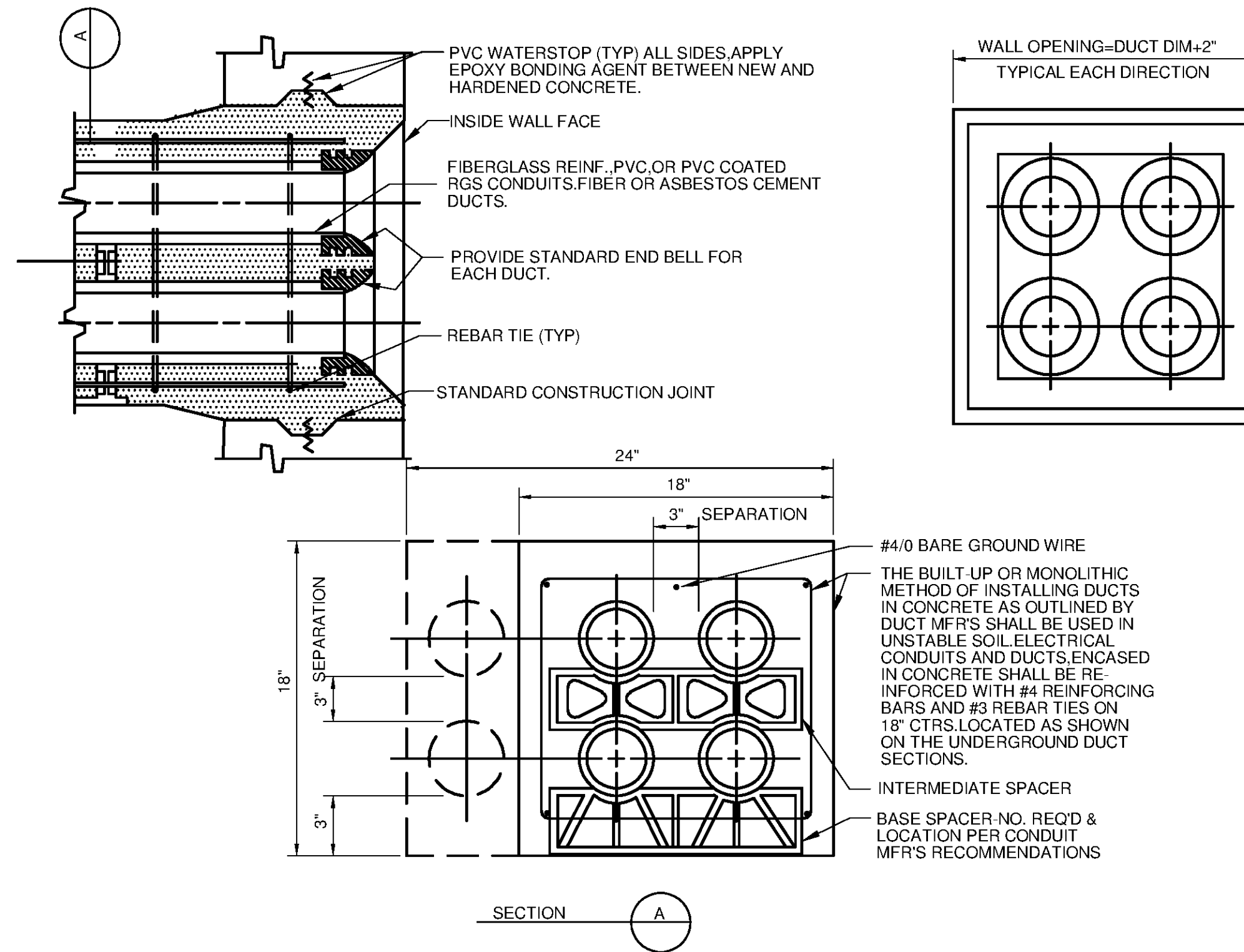
10/17/2014 11:04:33 AM - P:\IER11740\200-11740-10003\CAD\SHEETFILES\TREATMENT PLANT\WTP E-9506 ELECTRICAL DETAILS.DWG - CALZARETTA, TIMOTHY



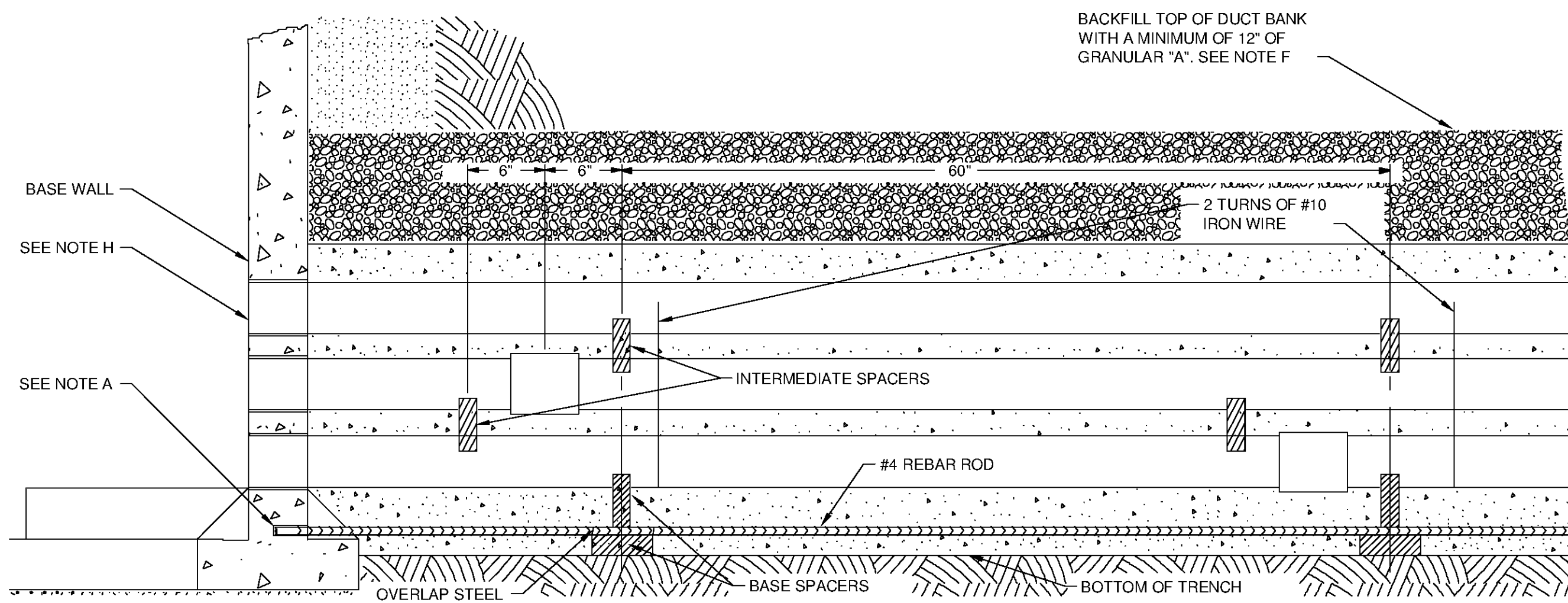
TYPICAL CONCRETE DUCT BANK SECTION VIEW

NOTES

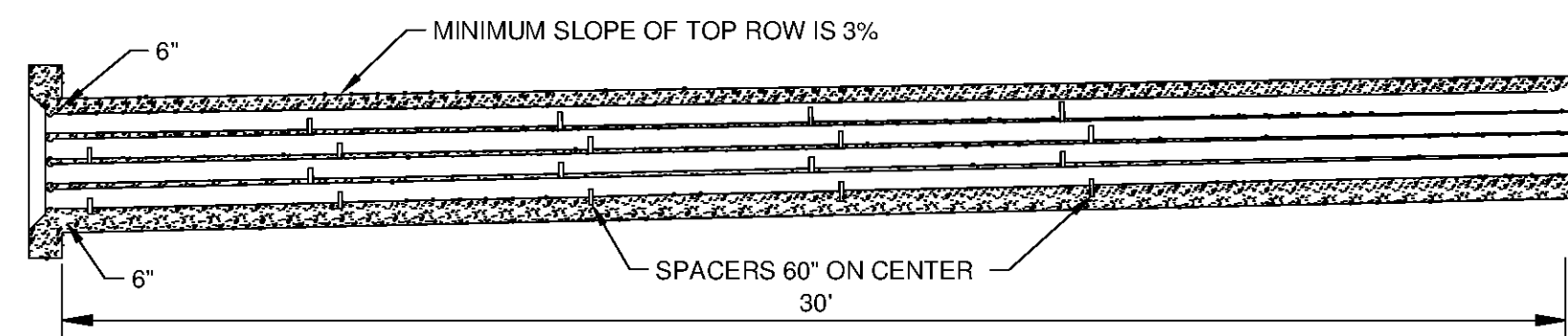
- A. REINFORCING RODS FULL LENGTH OF CONCRETE ENCASED DUCTS. OVERLAP JOINTS BY 6" ON BASE SPACERS AND TIE BOTH ENDS. DRILL AND DOWEL RODS 3.5" INTO WALL(S) OF CONCRETE STRUCTURE.
- B. DUCT SPACERS TO BE PLACED AT A MAXIMUM OF 60" AND WITHIN 6" OF COUPLING. PLASTIC DUCT SPACERS TO BE USED ONLY IF CONCRETE DUCT SPACERS ARE UNAVAILABLE.
- C. FORMS REQUIRED FOR BOTH SIDES OF THE FULL LENGTH OF CONCRETE ENCASED DUCT STRUCTURE.
- D. DUCTS AND TRENCHES MUST BE INSPECTED BY ENGINEER BEFORE ANY CONCRETE IS POURED.
- E. CONTRACTOR MUST ENSURE THAT DUCTS ARE CLEANED, RODDED AND THAT A 3/8" POLYPROPYLENE ROPE IS LEFT IN EACH DUCT.
- F. BACKFILL MATERIAL MUST BE APPROVED BY ENGINEER INSPECTOR; FOR ACCEPTABLE BACKFILL MATERIAL, SEE SPECIFICATION DOCUMENTS.
- G. STEEL PLATES ARE TO BE USED IF THE COVER OVER THE DUCT BANK IS LESS THAN 24". THE PLATES ARE TO BE 1/4" THICKNESS AND THE WIDTH OF THE DUCT BANK BEING COVERED. ANY DEVIATION FROM THE STANDARD COVER OF 24" MUST BE APPROVED BY THE ENGINEER.
- H. BELL END TERMINATORS SHALL BE USED WHEN TERMINATING DUCTS IN STRUCTURES.



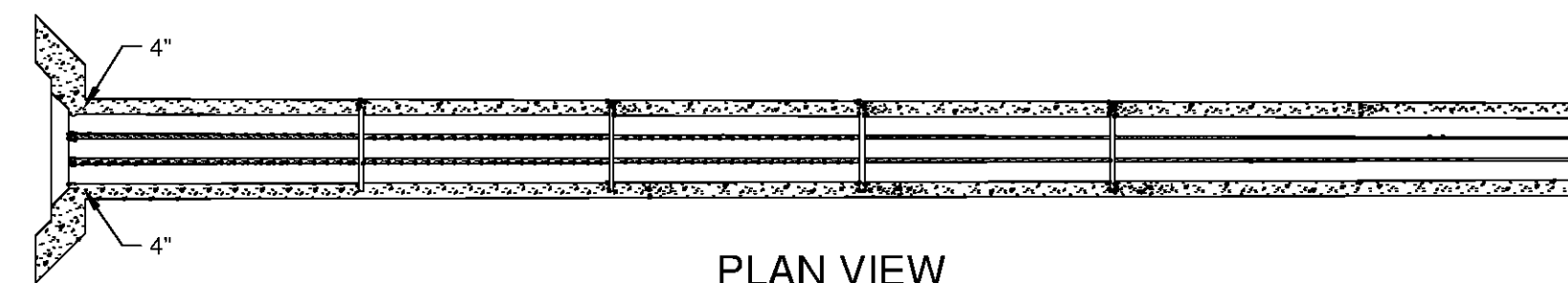
DUCT DETAILS  
NO SCALE



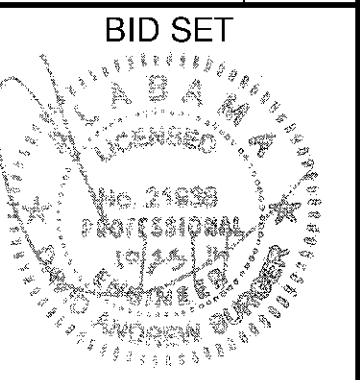
CONCRETE DUCT BANK ELEVATION VIEW



ELEVATION VIEW



PLAN VIEW



MARK	DATE	DESCRIPTION	BY

HUNTSVILLE UTILITIES  
SOUTHEAST WATER TREATMENT PLANT  
ELECTRICAL DETAILS

Project No.: 200-11740-10003  
Designed By: CSW  
Drawn By: CSW  
Checked By: DAB

E-9506