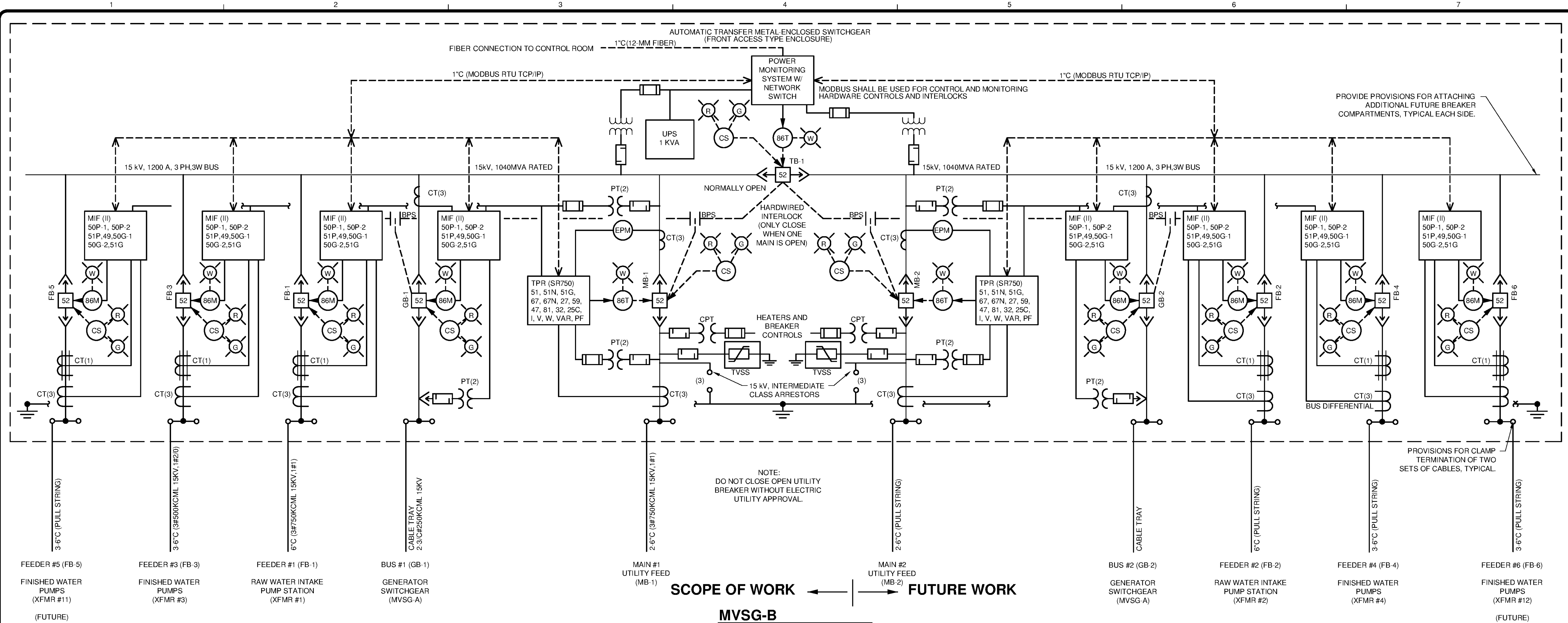


10/17/2014 11:01:57 AM - P:\ER11740\200-11740-10003\CAD\SHEETFILES\TREATMENT PLANT\WTP E 8601 MEDIUM VOLTAGE ONE LINE.DWG - CALZARETTA, TIMOTHY



SCOPE OF WORK ← | → **FUTURE WORK**
MVSG-B
 SCALE: NA

MEDIUM VOLTAGE SWITCHGEAR RATINGS	
DESCRIPTION ANSI C37.06 BASIS	RATING
OPERATING SYSTEM VOLTAGE	12.5 KV
NOMINAL RATED VOLTAGE	12.5 KV
MAXIMUM DESIGN VOLTAGE	15 KV
LOW FREQUENCY WITHSTAND VOLTAGE	36 KV
BASIC IMPULSE LEVEL	95 KV
CONTINUOUS CURRENT BUS RATING	1200A
CLOSE AND LATCH CURRENT RATING	104 KA
SHORT TIME 2-SECOND CURRENT RATING	40 KA
THREE PHASE MVA INTERRUPTING RATING	1040 MVA
INTERRUPTING CURRENT AT RATING VOLTAGE	40 KA
MAXIMUM INTERRUPTING CURRENT	40 KA
INTERRUPTING TIME (60 HZ BASIS)	3 CYCLES
CONTROL OPERATING VOLTAGE	125 VAC
TRIP AND CLOSE CURRENT	15A MAX
CHARGING CURRENT	25A MAX
FEEDER CABLE ENTRY	BOTTOM
PRIMARY CABLE ENTRY	BOTTOM
BREAKER CONTINUOUS RATING	1200 A
POWER COMPANY METERING CUBICLE	NA

SYMBOL LEGEND	
W	WATER FLOAT SWITCH
H	SPACE HEATER (WITH EXTERNAL DISCONNECT)
L	VALVE LIMIT SWITCH
P	PRESSURE SWITCH
V	VIBRATION MONITOR
T	TEMPERATURE MONITOR
RES	RESISTOR
PT	POTENTIAL TRANSFORMER
CT	CURRENT TRANSFORMER
A	AMMETER
V	VOLTMETER
AS	AMMETER SWITCH
VS	VOLTMETER SWITCH
PF	POWER FACTOR METER
W	WATTMETER
CS	CONTROL SWITCH
TI	TEMPERATURE INDICATOR
LI	LEVEL INDICATOR
AP	ALARM POINT
L.S.	LONG TIME SHORT TIME
L.S.I.	LONG TIME SHORT TIME INSTANT.
K	KEY INTERLOCK
— —	LOW VOLTAGE FUSE
— —	HIGH VOLTAGE FUSE
CPT	CONTROL POWER TRANSFORMER
(2) (3)	NUMBER OF DEVICES REQUIRED
G.F.I.	GROUND FAULT INTERRUPTER
BPS	BREAKER POSITION STATUS (CONTACT CLOSED WHEN BREAKER CLOSED)
WH	WATTHOUR METER
VFD	VARIABLE FREQUENCY DRIVE (CONTACTS SHALL TRIP MIN. 2 CYCLES BEFORE BREAKER)

ELECTRICAL INTERLOCK					
MAIN BREAKER	MAY NOT BE CLOSED WHEN THE TIE AND OTHER MAIN IS CLOSED				
TIE BREAKER	MAY NOT BE CLOSED WITH BOTH MAIN BREAKERS CLOSED				
GEN. BREAKER	MAY NOT BE CLOSED WITH BOTH MAIN BREAKERS CLOSED				

POWER CIRCUIT BREAKER SCHEDULE					
DEVICE	FRAME SIZE	CONT. CURRENT RATING	INTER. RATING RMS AMP SYMM.	RMS SOLID STATE TRIP DEVICES	REMARKS
MB-1	1200A	1000A	200 KA	L.S.I.G.	DISABLE INSTANTANEOUS FUNCTION
MB-2	1200A	1000A	200 KA	L.S.I.G.	DISABLE INSTANTANEOUS FUNCTION
TB-1	1200A	1000A	200 KA	L.S.I.G.	DISABLE LONG AND SHORT FUNCTION
GB-1	600A	125A	200 KA	L.S.I.G.	DISABLE INSTANTANEOUS FUNCTION
GB-2	600A	125A	200 KA	L.S.I.	DISABLE INSTANTANEOUS FUNCTION
FB-1	600A	150A	200 KA	L.S.I.	
FB-2	600A	150A	200 KA	L.S.I.	
FB-3	600A	400A	200 KA	L.S.I.	DISABLE INSTANTANEOUS FUNCTION
FB-4	600A	400A	200 KA	L.S.I.	DISABLE INSTANTANEOUS FUNCTION
FB-5	600A	500A	200 KA	L.S.I.	DISABLE INSTANTANEOUS FUNCTION
FB-6	600A	500A	200 KA	L.S.I.	DISABLE INSTANTANEOUS FUNCTION
FB-7	600A	500A	200 KA	L.S.I.	DISABLE INSTANTANEOUS FUNCTION SPARE
FB-8	600A	500A	200 KA	L.S.I.	DISABLE INSTANTANEOUS FUNCTION SPARE

- NOTES**
- PROVIDE 15 kV EPR (MV-105) SHIELDED CONDUCTORS WITH XHHW GROUND. INSTALL STRESS RELIEF CABLE TERMINATION KITS ON BOTH ENDS OF EACH 15 kV CABLE INSTALLED FOR DISSIPATION OF CHARGE ON CABLE SHIELDING.
 - PROVIDE MONITORING NETWORK TO ALLOW FOR INTELLIGENT MONITORING OF THE SWITCHGEAR. SEE DRAWINGS FOR NETWORK LAYOUT. SEE DRAWING FOR MONITORING POINTS. SEE SWITCHGEAR SPECIFICATIONS.
 - THE NETWORK SHOULD ALLOW FOR ADVANCED COMMUNICATION CAPABILITY VIA ETHERNET BASED IEC 61850 COMMUNICATION AND NETWORK ARCHITECTURE TECHNOLOGY, AND WILL ALLOW USERS TO COMBINE POWER MONITORING AND CIRCUIT PROTECTION WITH INTERNAL LOGIC AND SECURE COMMUNICATIONS.
 - MEDIUM VOLTAGE WIRE INSULATION SHOWN IN THE ONE-LINE SHALL BE 133% RATED.
 - MEDIUM VOLTAGE CABLES (IN VAULTS) SHALL BE WRAPPED WITH FIREPROOF TAPE/WRAPPING.
 - MAIN AND FEEDER BREAKERS SHALL BE COORDINATED TO PROVIDE PROPER GROUND FAULT PROTECTION.
 - PROVIDE INTERMEDIATE CLASS ARRESTORS.
 - PROVIDE COOLING FANS IN PLC CABINET.
 - PLC SHALL BE CONTROLLOGIX WITH ALL PROGRAMMING COMPLETED BEFORE SHIPPING.
 - PROVIDE THERMOSTATICALLY CONTROLLED HEATER IN EACH CUBICAL.

TETRA TECH

www.tetrattech.com
 101 QUALITY CIRCLE, SUITE 140
 HUNTSVILLE, ALABAMA 35806
 PHONE: (256) 424-4077 FAX: (256) 424-4097

BID SET

BY	DATE	DESCRIPTION

HUNTSVILLE UTILITIES

SOUTHEAST WATER TREATMENT PLANT

MEDIUM VOLTAGE ONE-LINE

Project No.: 200-11740-10003
 Designed By: CSW
 Drawn By: TAC
 Checked By: DAB

E-8601

Copyright: Tetra Tech
Bar Measures 1 inch