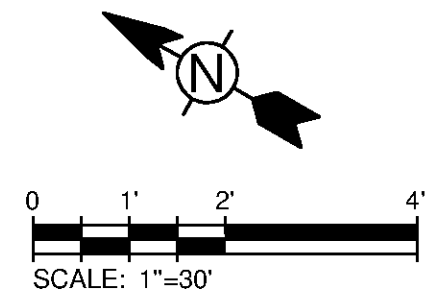
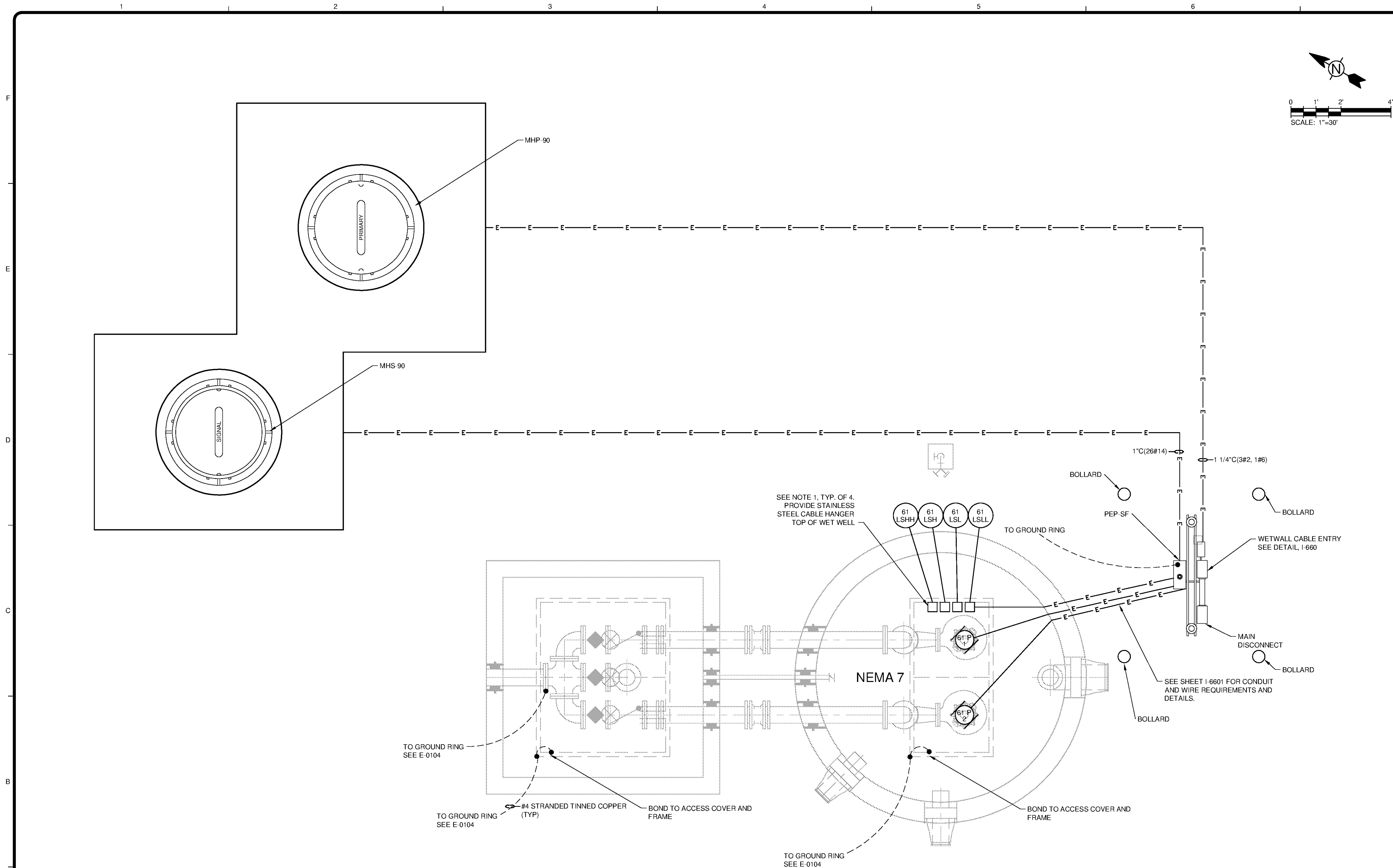


10/17/2014 11:01:11 AM - P:\IER\1740\200-11740-10003\CAD\SHEET\FILTRATE\TREATMENT PLANT\WTP E-6401 ELECTRICAL PLAN - FILTRATE PUMP STATION.DWG - CALZARETTA, TIMOTHY



SEE NOTE 1, TYP. OF 4. PROVIDE STAINLESS STEEL CABLE HANGER TOP OF WET WELL

1\"/>

1 1/4\"/>

BOLLARD

PEP-SF

BOLLARD

WETWALL CABLE ENTRY SEE DETAIL I-660

MAIN DISCONNECT

BOLLARD

SEE SHEET I-6601 FOR CONDUIT AND WIRE REQUIREMENTS AND DETAILS.

BOLLARD

NEMA 7

61 LSHH
61 LSH
61 LSL
61 LSL

TO GROUND RING

TO GROUND RING SEE E-0104

TO GROUND RING SEE E-0104

#4 STRANDED TINNED COPPER (TYP)

BOND TO ACCESS COVER AND FRAME

BOND TO ACCESS COVER AND FRAME

TO GROUND RING SEE E-0104

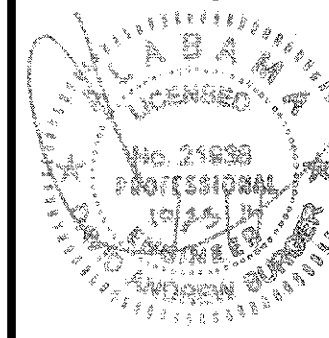
PLAN

SCALE: 1/2\"/>



TETRA TECH
www.tetrattech.com
101 QUALITY CIRCLE, SUITE 140
HUNTSVILLE, ALABAMA 35806
PHONE: (256) 424-4077 FAX: (256) 424-4097

BID SET



MARK	DATE	DESCRIPTION	BY

HUNTSVILLE UTILITIES
SOUTHEAST WATER TREATMENT PLANT
**ELECTRICAL PLAN -
FILTRATE PUMP STATION**

Project No.: 200-11740-10003
Designed By: CSW
Drawn By: TAC
Checked By: DAB

E-6401

- NOTES:**
- SEE PROCESS SHEET FOR FLOAT ELEVATIONS.
 - SEE SHEET I-6601 FOR CONDUIT AND WIRE REQUIREMENTS. COORDINATE W/ PROCESS FOR EXACT LOAD LOCATIONS.
 - SEE SITE SECTION C (E-0104) FOR WIRE ROUTING.