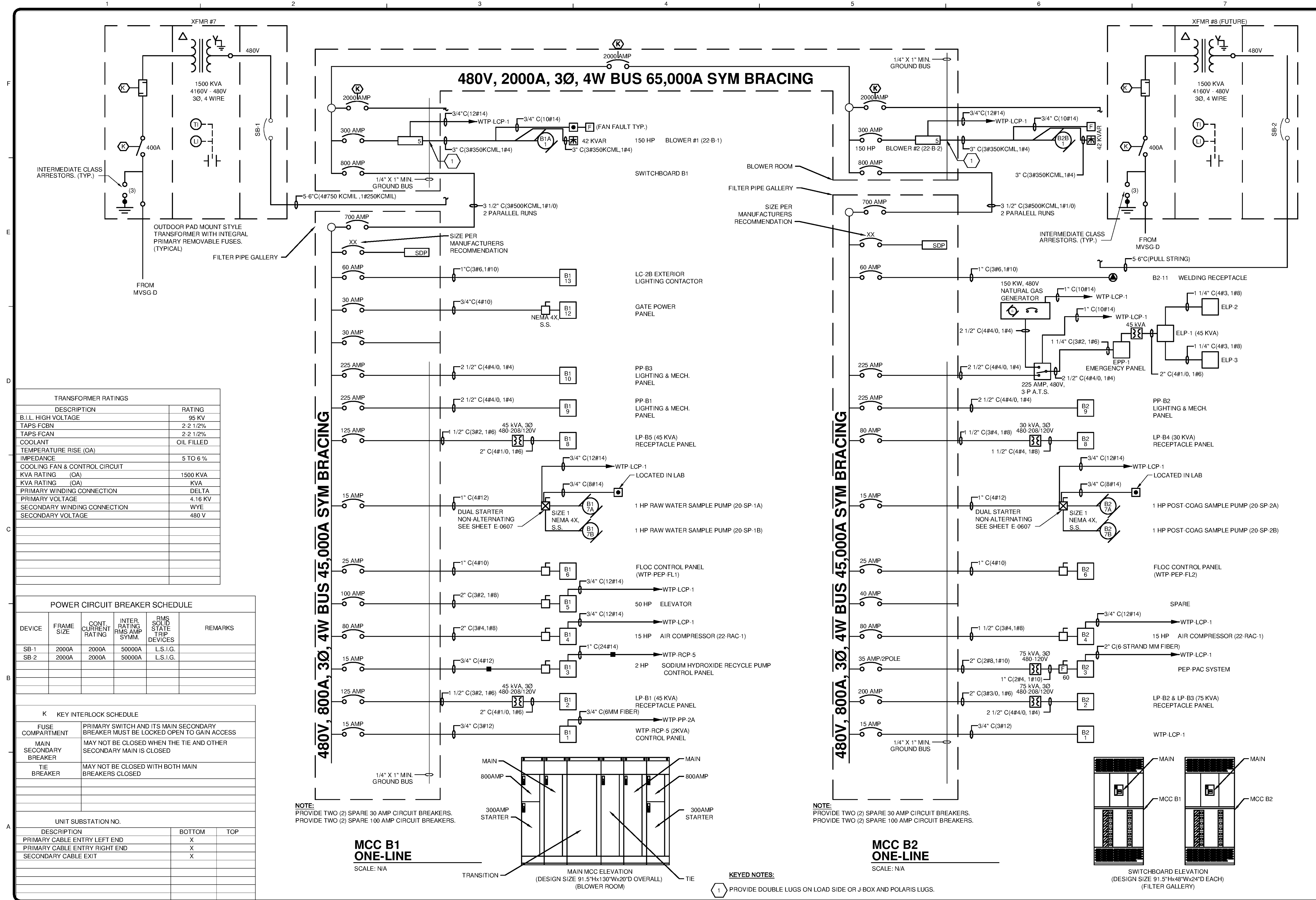


10/17/2014 10:58:42 AM P:\IER11740\200-11740-10003\CAD\SHEETFILES\TREATMENT PLANT\WTP-E-2601 LOW VOLTAGE ONE LINE LP-B LUMINAIRE.DWG - CALZARETTA, TIMOTHY



TRANSFORMER RATINGS	
DESCRIPTION	RATING
B.I.L. HIGH VOLTAGE	95 KV
TAPS-FCBN	2-2 1/2%
TAPS-FCAN	2-2 1/2%
COOLANT	OIL FILLED
TEMPERATURE RISE (OA)	
IMPEDANCE	5 TO 6%
COOLING FAN & CONTROL CIRCUIT	
KVA RATING (OA)	1500 KVA
KVA RATING (KA)	KVA
PRIMARY WINDING CONNECTION	DELTA
PRIMARY VOLTAGE	4.16 KV
SECONDARY WINDING CONNECTION	WYE
SECONDARY VOLTAGE	480 V

POWER CIRCUIT BREAKER SCHEDULE					
DEVICE	FRAME SIZE	CONT. CURRENT RATING	INTER. RATING RMS AMP SYMM.	RMS SOLID STATE TRIP DEVICES	REMARKS
SB-1	2000A	2000A	50000A	L.S.I.G.	
SB-2	2000A	2000A	50000A	L.S.I.G.	

KEY INTERLOCK SCHEDULE	
FUSE COMPARTMENT	PRIMARY SWITCH AND ITS MAIN SECONDARY BREAKER MUST BE LOCKED OPEN TO GAIN ACCESS
MAIN SECONDARY BREAKER	MAY NOT BE CLOSED WHEN THE TIE AND OTHER SECONDARY MAIN IS CLOSED
TIE BREAKER	MAY NOT BE CLOSED WITH BOTH MAIN BREAKERS CLOSED

UNIT SUBSTATION NO.		
DESCRIPTION	BOTTOM	TOP
PRIMARY CABLE ENTRY LEFT END	X	
PRIMARY CABLE ENTRY RIGHT END	X	
SECONDARY CABLE EXIT	X	

NOTE: PROVIDE TWO (2) SPARE 30 AMP CIRCUIT BREAKERS.
PROVIDE TWO (2) SPARE 100 AMP CIRCUIT BREAKERS.

NOTE: PROVIDE TWO (2) SPARE 30 AMP CIRCUIT BREAKERS.
PROVIDE TWO (2) SPARE 100 AMP CIRCUIT BREAKERS.

KEYED NOTES:
1 PROVIDE DOUBLE LUGS ON LOAD SIDE OR J-BOX AND POLARIS LUGS.

TETRA TECH

www.tetrattech.com

101 QUALITY CIRCLE, SUITE 140
HUNTSVILLE, ALABAMA 35806
PHONE: (256) 424-4077 FAX: (256) 424-4097

BID SET

BY	DATE	DESCRIPTION

HUNTSVILLE UTILITIES
SOUTHEAST WATER TREATMENT PLANT

LOW VOLTAGE ONE-LINE

Project No.:	200-11740-10003
Designed By:	CSW
Drawn By:	CSW
Checked By:	DAB

E-2601

Copyright: Tetra Tech
Bar Measures 1 inch