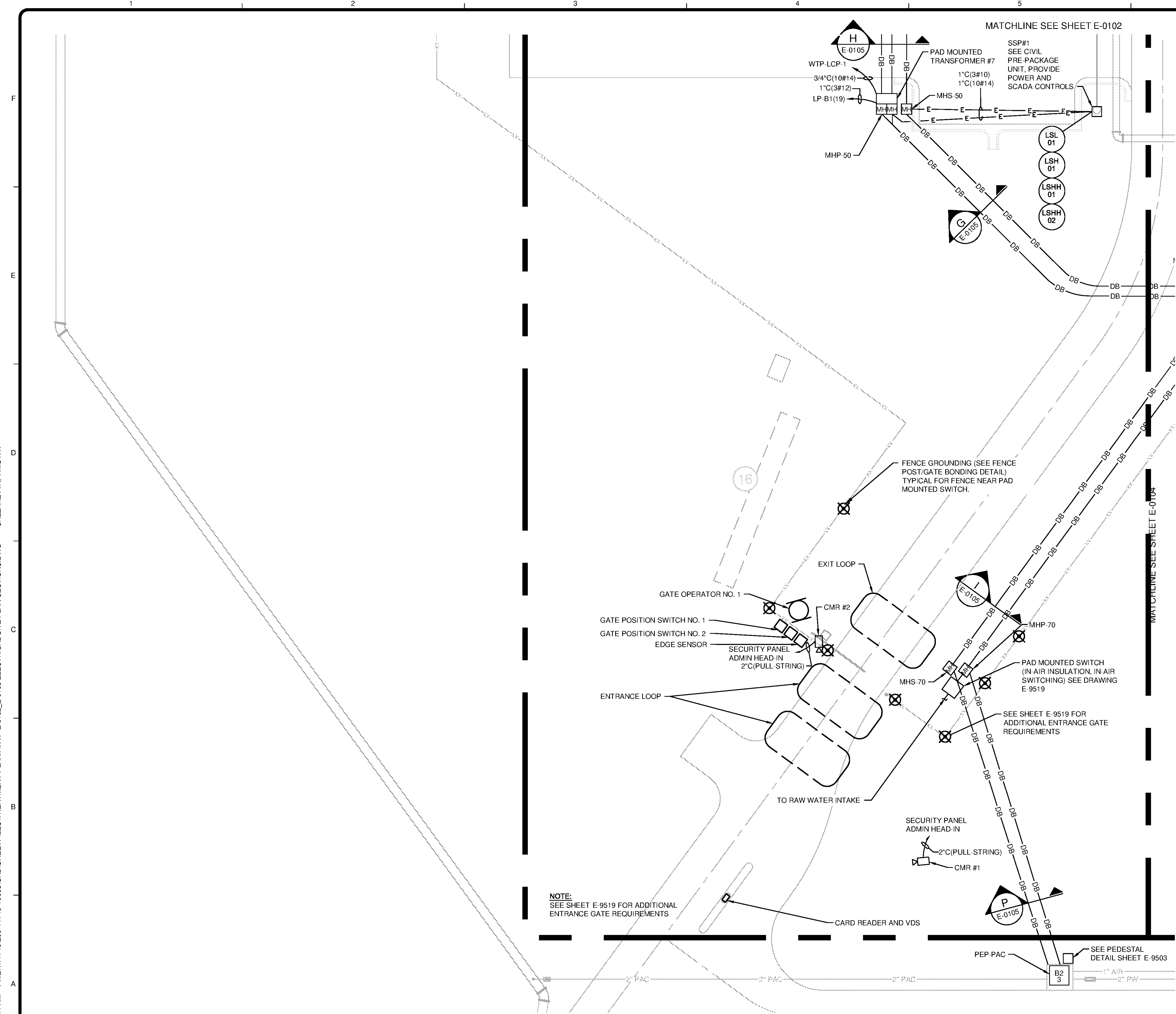
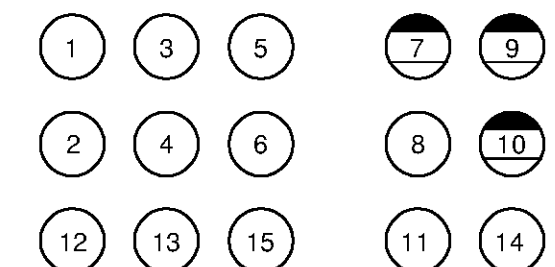


10/17/2014 10:51:11 AM - P:\IER11740\200-11740-10003\CAD\SHEETFILES\TREATMENT PLANT\WTP-E-0102-E-0106 ELECTRICAL SITE PLAN SECTIONS.DWG - CALZARETTA, TIMOTHY

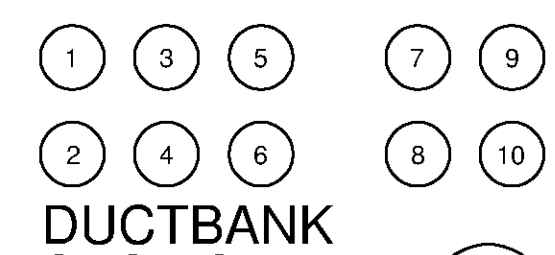


PLAN
SCALE: 1"=20'



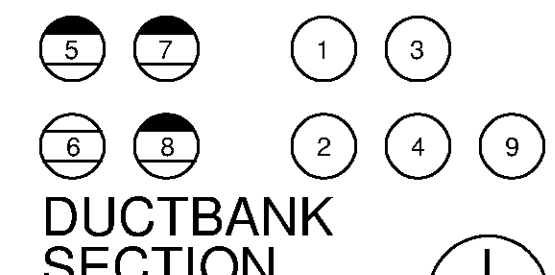
DUCTBANK SECTION G
SCALE: NTS

1. 6"C(3#500kCMIL SHLD 5kV), MVSG- D TO XFMR #7
2. 6"C(3#500kCMIL SHLD 5kV), MVSG- D TO XFMR #7
3. 6"C(PULL-STRING), SPARE
4. 6"C(PULL-STRING), SPARE
5. 4"C(3#10, 1#10), MCC-B TO GATE POWER PANEL (3#2,1#0), MCC-B TO B2-3
6. 4"C(PULL-STRING) SPARE
7. 6"C(4.72-STRAND MM FIBER), WTP-PP-8A/WTP-PP-4A/WTP-PP-3A/WTP-PP-5A TO WTP-PP-2C (48-STRAND SM FIBER), WTP-PP-4A TO WTP-PP-2C
8. 6"C(4.48-STRAND MM FIBER), WTP-RCP-3/WTP-PP-4B/WTP-PP-3B/WTP-PP-5B TO WTP-PP-2B
9. 4"C(PULL-STRING), SPARE
10. 4"C(PULL-STRING), SPARE
11. 4"C(8#14), MCC-A2 TO PB IN LAB
12. 6"C(PULL-STRING), SPARE MVSG-D TO XFMR #8
13. 6"C(PULL-STRING), SPARE MVSG-D TO XFMR #8
14. 4"C(12-STRAND SM FIBER), FACP-NODE 2 TO FACP-NODE 1
15. 2"C(2#8,1#10), MCC-B2 TO B2-3 PAC UNIT, (2#8, 1#8) LP-B1 HST-20



DUCTBANK SECTION H
SCALE: NTS

1. 6"C(PULL-STRING), SPARE XFMR #8 TO MCC-D
2. 6"C(PULL-STRING), SPARE XFMR #8 TO MCC-D
3. 6"C(PULL-STRING), SPARE XFMR #8 TO MCC-D
4. 6"C(PULL-STRING), SPARE XFMR #8 TO MCC-D
5. 6"C(PULL-STRING), SPARE XFMR #8 TO MCC-D
6. 6"C(PULL-STRING), SPARE XFMR #8 TO MCC-D
7. 6"C(4#750kCMIL,1#250kCMIL), XFMR #7 TO MCC-D
8. 6"C(4#750kCMIL,1#250kCMIL), XFMR #7 TO MCC-D
9. 6"C(4#750kCMIL,1#250kCMIL), XFMR #7 TO MCC-D
10. 6"C(4#750kCMIL,1#250kCMIL), XFMR #7 TO MCC-D
11. 6"C(4#750kCMIL,1#250kCMIL), XFMR #7 TO MCC-D
12. 6"C(10#14), TO WTP-LCP-1
13. 4"C(3#10, 1#10), MCC-B1 TO GATE POWER PANEL, (3#10), SSP#1 TO LP-B1
14. 2"C(3#8) SITE LIGHTING TO LC-2B
15. 4"C(4.72-STRAND MM FIBER), WTP-PP-8A/WTP-PP-4A/WTP-PP-3A/WTP-PP-5A TO WTP-PP-2C (48-STRAND SM FIBER), WTP-PP-4A TO WTP-PP-2C
16. 4"C(4.48-STRAND MM FIBER), WTP-RCP-3/WTP-PP-4B/WTP-PP-3B/WTP-PP-5B TO WTP-PP-2B
17. 4"C(10#14, PULL-STRING), SSP#1 TO WTP-RCP-5
18. 4"C(PULL-STRING), SPARE
19. 4"C(8#14), MCC-A2 TO PB IN LAB
20. 4"C(12-STRAND SM FIBER), FACP-NODE 2 TO FACP-NODE 1
21. 2"C(2#8,1#10), MCC-B2 TO B2-3 PAC UNIT, (2#8, 1#8) LP-B1 HST-20



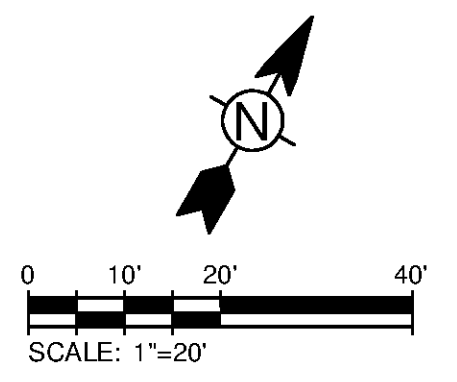
DUCTBANK SECTION I
SCALE: NTS

1. 6"C(3#750kCMIL SHLD 15kV), MVSG-B TO XFMR #1
2. 6"C(PULL-STRING), SPARE MVSG-B TO XFMR#2
3. 4"C(3#10, 1#10), MCC-B1 TO GATE POWER PANEL (3#2,1#0), MCC-B TO B2-3
4. 4"C(PULL-STRING) SPARE
5. 4"C(48-STRAND MM FIBER), RWI TO WTP-PP-2B
6. 4"C(PULL-STRING), CMR#1, CMR #2, AND GATE OPERATOR #1 TO WTP-PP-2A1
7. 4"C(PULL-STRING), SPARE
8. 4"C(PULL-STRING), SPARE
9. 2"C(2#8,1#10), MCC-B2 TO B2-3 PAC UNIT, (2#8, 1#8) LP-B1 HST-20



DUCTBANK SECTION P
SCALE: NTS

1. 2"C(PULL-STRING), PEP-PAC TO WTP-PP-2B
2. 4"C(PULL-STRING), SPARE
3. 2"C(PULL-STRING) SECURITY HEAD-IN
4. 2"C(PULL-STRING) SPARE
5. 2"C(2#8,1#10), MCC-B2 TO B2-3 PAC UNIT, (2#8, 1#8) LP-B1 HST-20
6. 4"C(PULL-STRING), SPARE



TETRA TECH
www.tetrattech.com
101 QUALITY CIRCLE, SUITE 140
HUNTSVILLE, ALABAMA 35806
PHONE: (256) 424-4077 FAX: (256) 424-4097

BID SET
Professional Engineer Seal for Timothy Calzaretta, State of Alabama, License No. 21938.

BY	DATE	DESCRIPTION

MARK	DATE	DESCRIPTION

HUNTSVILLE UTILITIES
SOUTHEAST WATER TREATMENT PLANT
ELECTRICAL PLAN - SITE SECTION D

Project No.:	200-11740-10003
Designed By:	CSW
Drawn By:	TAC
Checked By:	DAB

E-0105