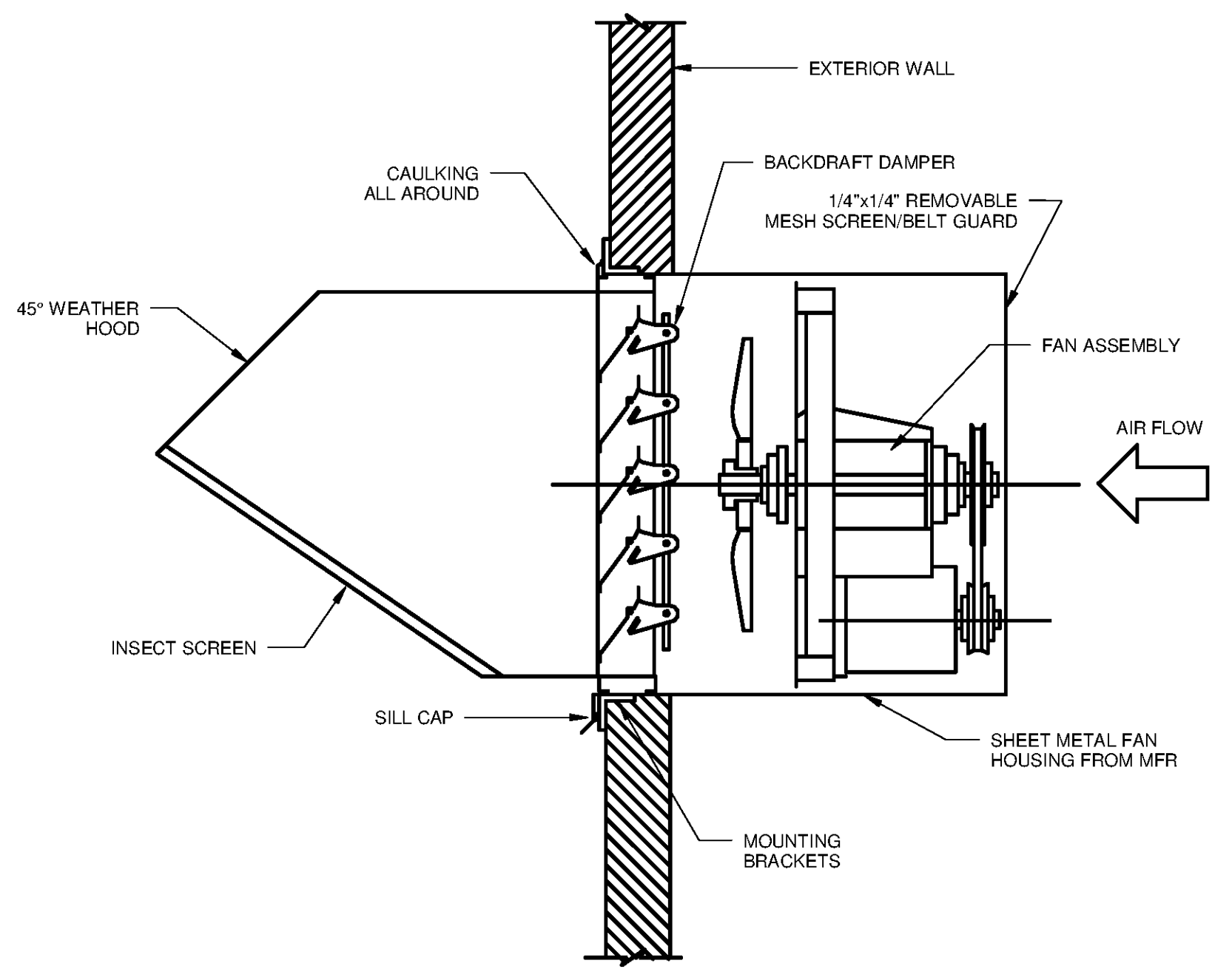
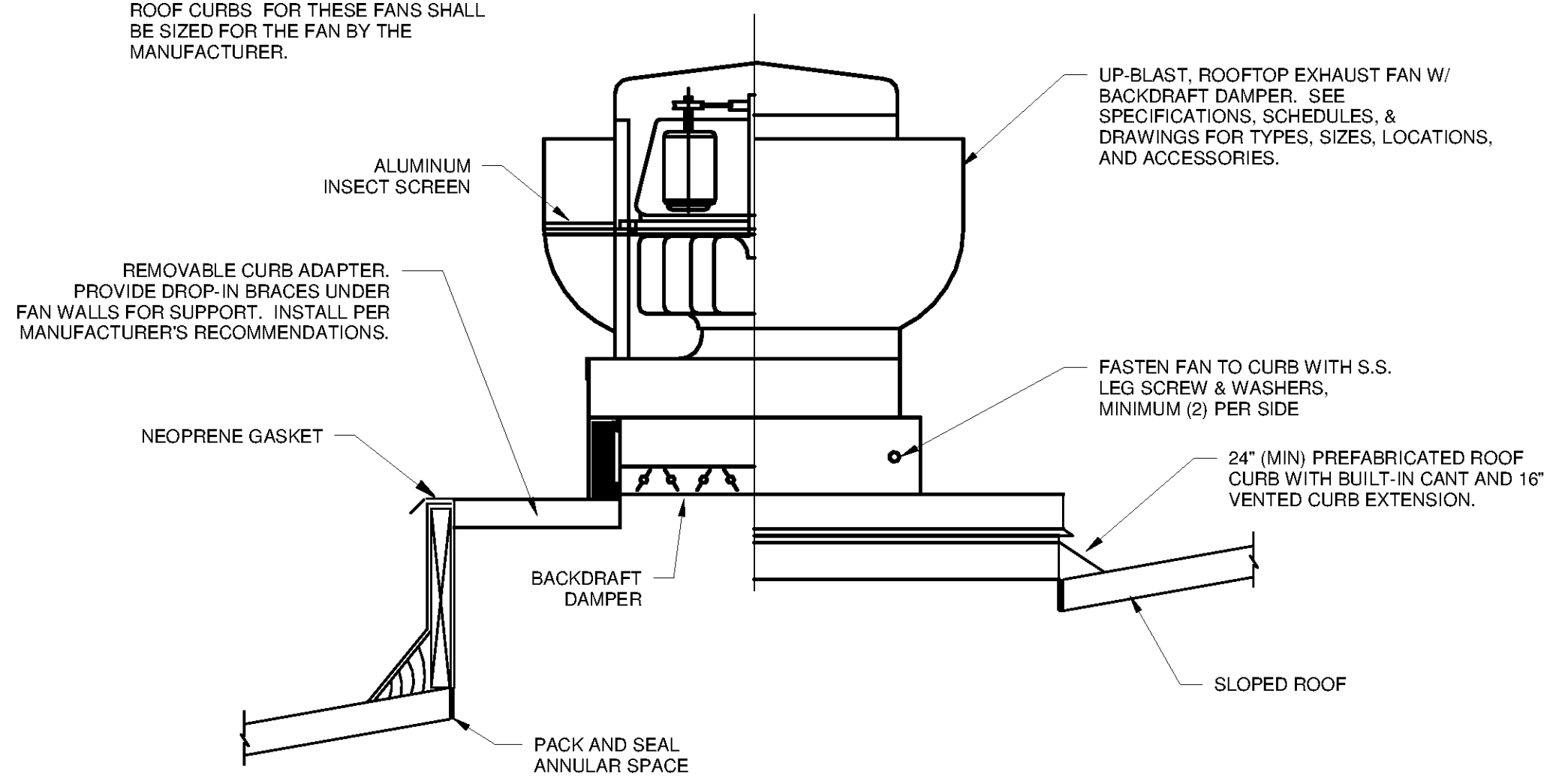


**1 CONDENSING UNIT DETAIL**  
SCALE: N.T.S.

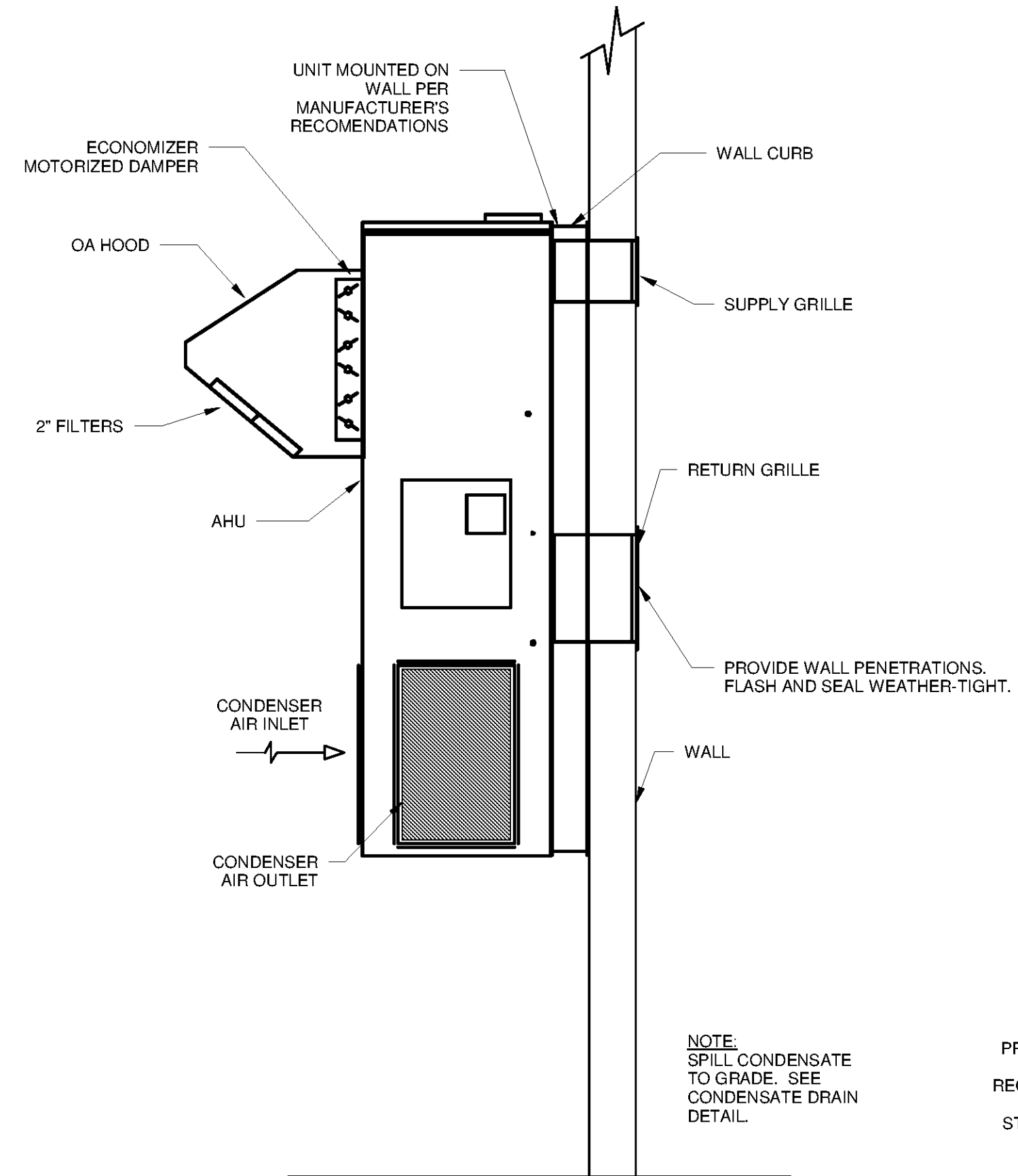


**2 WALL EXHAUST FAN WITH DAMPER DETAIL**  
SCALE: N.T.S.

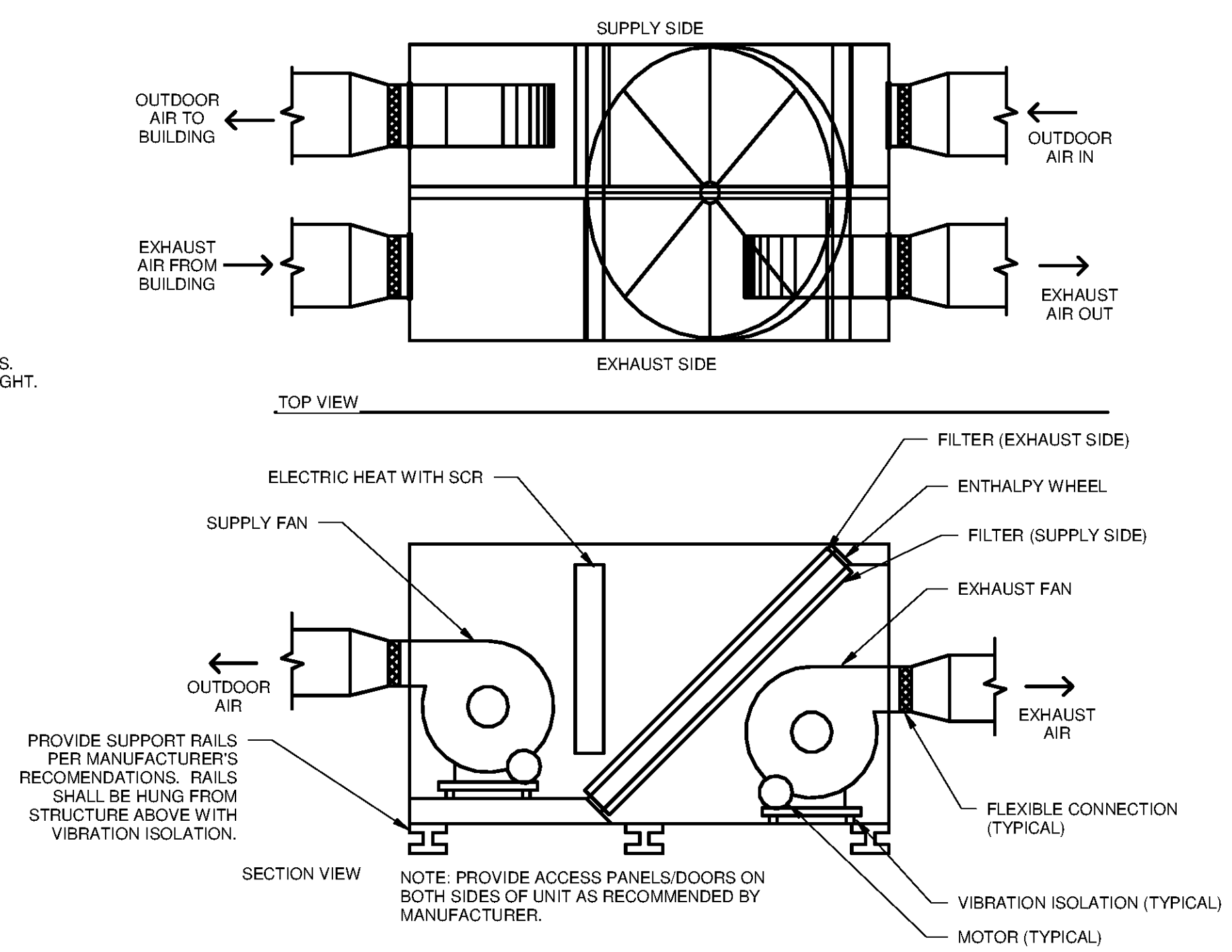
NOTES:  
1. EF-2-11, EF-2-12, AND EF-3-2 THROUGH EF-3-6 DO NOT HAVE CURB ADAPTERS. ROOF CURBS FOR THESE FANS SHALL BE SIZED FOR THE FAN BY THE MANUFACTURER.



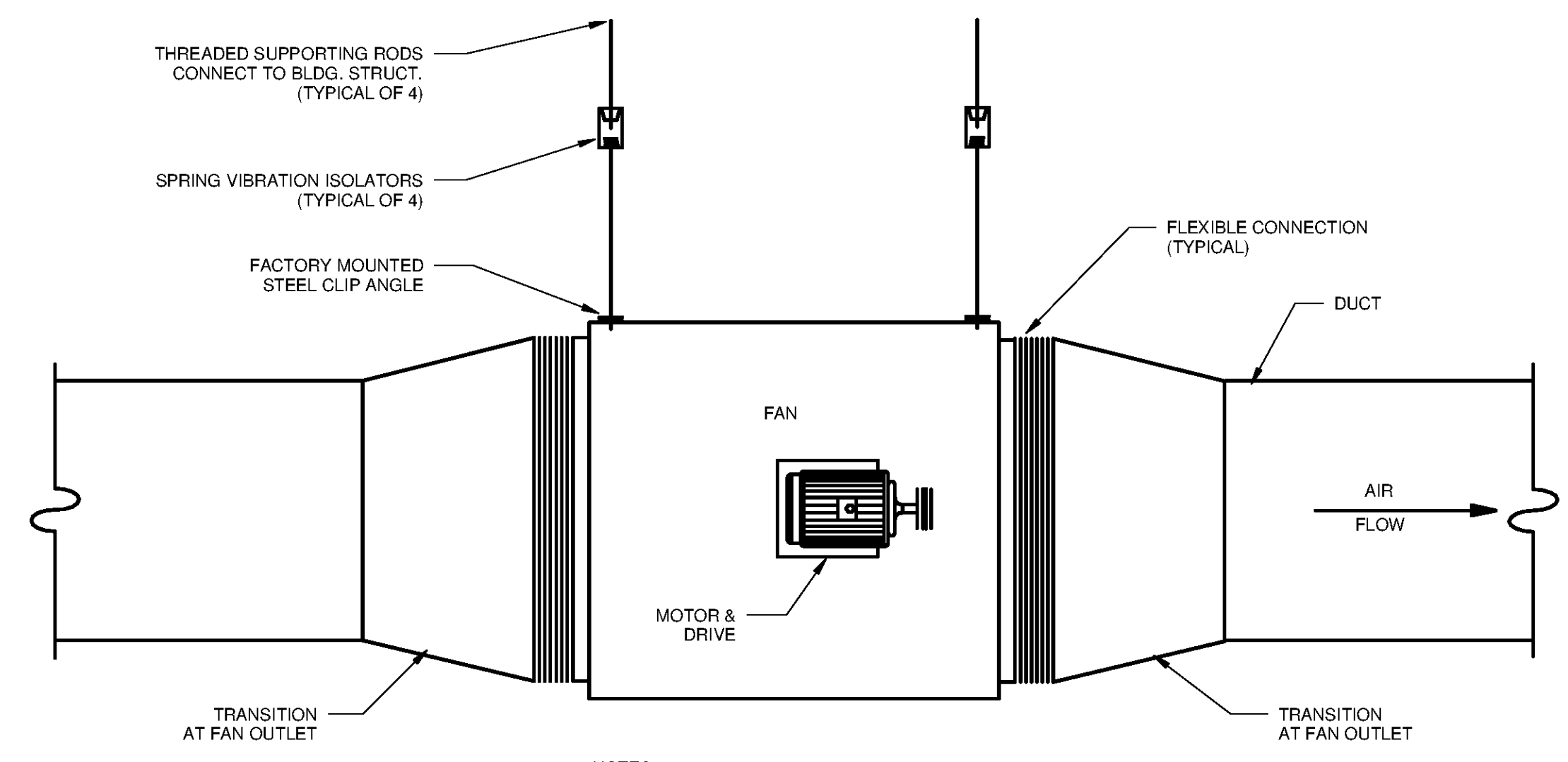
**3 UPBLAST EXHAUST FAN DETAIL**  
SCALE: N.T.S.



**4 THROUGH-WALL AHU DETAIL**  
SCALE: N.T.S.



**5 ENERGY RECOVERY VENTILATOR (ERV) DETAIL**  
SCALE: N.T.S.



NOTES:  
1. PROVIDE BELT/DRIVE GUARD.  
2. PROVIDE MINIMUM DISTANCE OF STRAIGHT DUCT LENGTH AT INLET AND OUTLET OF FAN AS DIRECTED BY FAN MANUFACTURER.

**6 IN-LINE FAN DETAIL**  
SCALE: N.T.S.

10/1/2014 4:38:19 PM C:\Users\madison.leffler\Documents\WTP-11740-M-MAIN\PP\_madison.leffler.rvt

**TETRA TECH**  
www.tetra.tech.com  
101 QUALITY CIRCLE, SUITE 140  
HUNTSVILLE, ALABAMA 35895  
PHONE: (256) 424-4077 FAX: (256) 424-4087

BID SET  
ALABAMA REGISTERED PROFESSIONAL ENGINEER  
No. 16553  
DONALD S. BOYD  
12/24/2014

MARK	DATE	DESCRIPTION	BY

HUNTSVILLE UTILITIES  
SOUTHEAST WATER TREATMENT PLANT  
**MECHANICAL HVAC DETAILS**

Project No.: 200-11740-10003  
Designed By: SBR  
Drawn By: SBR  
Checked By: DSB

**M-9501**