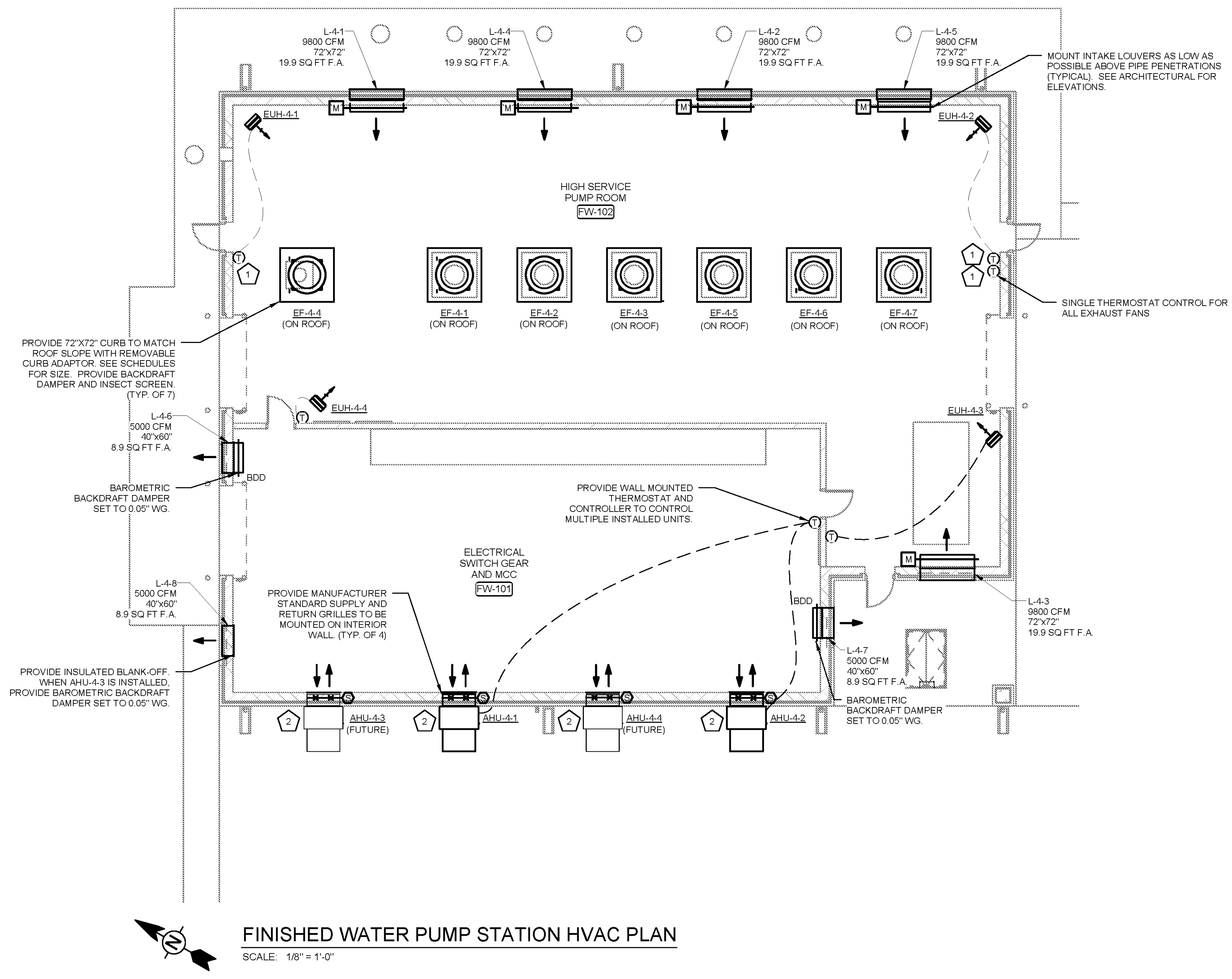


10/1/2014 4:59:54 PM C:\Users\bryan.zelinsky\Documents\WTP-11740-M-FIN\WTR_bryan.zelinsky.rvt



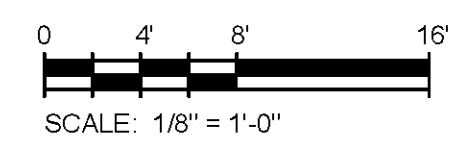
FINISHED WATER PUMP STATION HVAC PLAN
SCALE: 1/8" = 1'-0"

KEYED NOTES:

- 1 PROVIDE INSULATED BACKING ON ALL THERMOSTATS MOUNTED ON EXTERIOR WALLS.
- 2 MOUNT AHU AT 5'-8" AFF SUCH THAT SUPPLY AND RETURN GRILLES PENETRATE WALL ABOVE ELECTRICAL EQUIPMENT.

GENERAL NOTES:

- 1. SEE ARCHITECTURAL ELEVATIONS FOR LOUVER AND EXHAUST FAN PLACEMENT.
- 2. ALL INTAKE LOUVERS SHALL BE PROVIDED WITH LOW-LEAKAGE MOTORIZED DAMPERS.
- 3. ALL EXHAUST FANS IN PUMP ROOM SHALL BE INTERLOCKED WITH ALL MOTORIZED DAMPERS IN PUMP ROOM.
- 4. SEE SHEET M-9907 FOR MOTORIZED DAMPER INTERLOCK CONTROLS.



TETRA TECH
www.tetrattech.com
101 QUALITY CIRCLE, SUITE 140
HUNTSVILLE, ALABAMA 35895
PHONE: (256) 424-4077 FAX: (256) 424-4097

BID SET

BY	DESCRIPTION	MARK	DATE

HUNTSVILLE UTILITIES
SOUTHEAST WATER TREATMENT PLANT
FINISHED WATER PUMP STATION HVAC PLAN

Project No.: 200-11740-10003
Designed By: SBR
Drawn By: SBR
Checked By: DSB

M-4101