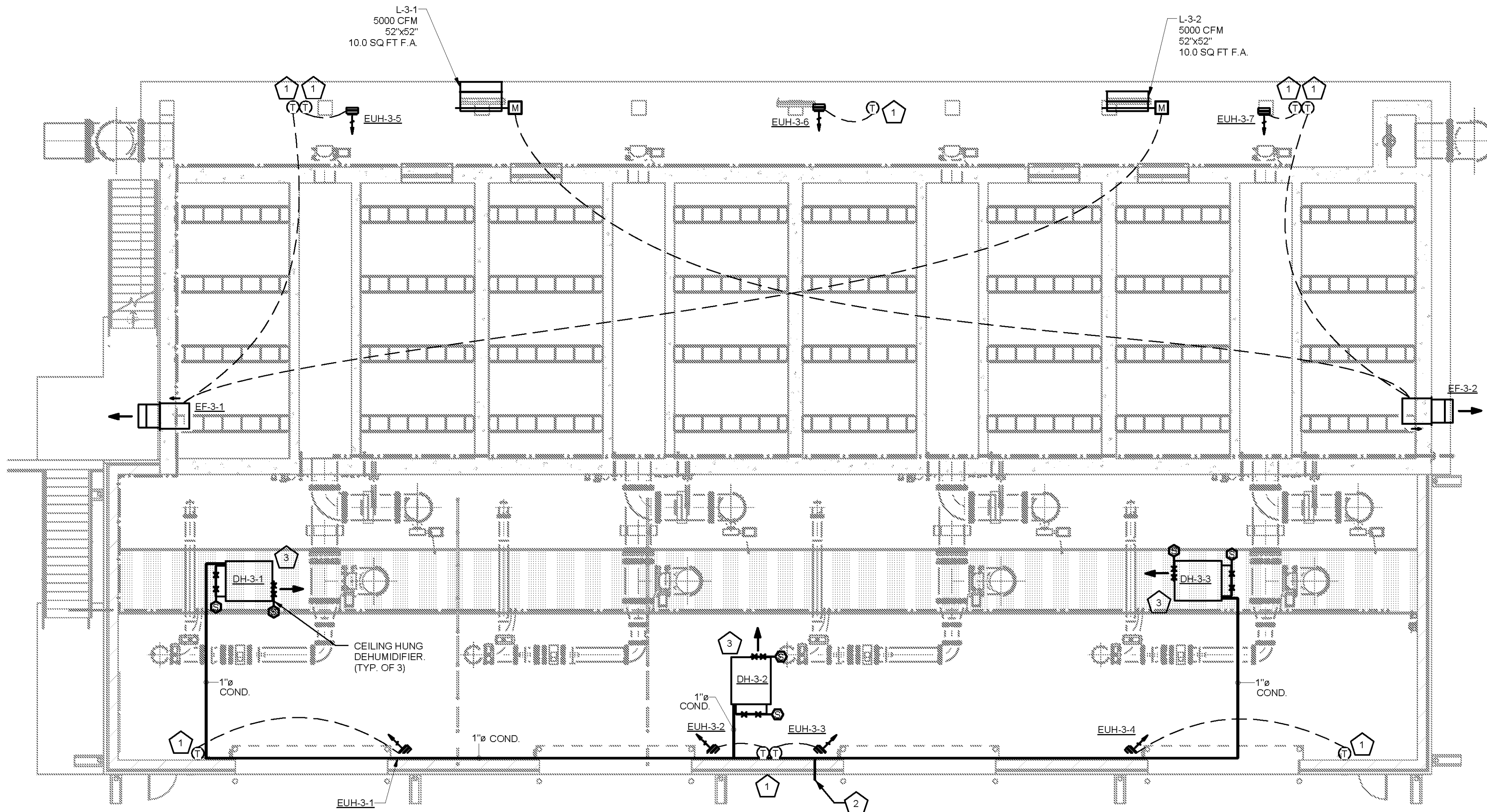


10/1/2014 5:05:45 PM C:\Users\bryan.zelinsky\Documents\WTP-11740-M-GACBAC_bryan.zelinsky.rvt



KEYED NOTES:

- 1 PROVIDE INSULATED BACKING ON ALL THERMOSTATS MOUNTED ON EXTERIOR WALLS.
- 2 ROUTE 1" Ø CONDENSATE PIPE DOWN TO 8" ABOVE GRADE AND SPILL ON SPLASH BLOCK.
- 3 PROVIDE MANUFACTURER STANDARD SCREEN FOR SUPPLY AND RETURN TO FREE-BLOWING UNIT. MAKE ALL NECESSARY PROVISIONS FOR SUPPLY AND RETURN SMOKE DETECTORS.

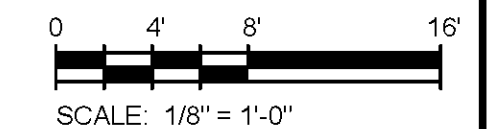
GENERAL NOTES:

- 1. SEE ARCH ELEVATIONS FOR LOUVER AND EXHAUST FAN PLACEMENT.
- 2. ALL INTAKE LOUVERS SHALL BE PROVIDED WITH LOW-LEAKAGE MOTORIZED DAMPERS.



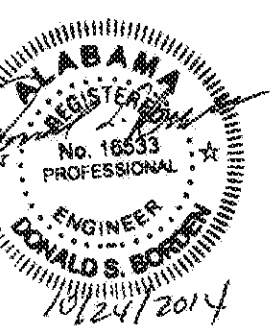
GAC/BAC FILTRATION BUILDING HVAC PLAN

SCALE: 1/8" = 1'-0"



TETRA TECH
 www.tetrattech.com
 101 QUALITY CIRCLE, SUITE 140
 HUNTSVILLE, ALABAMA 35895
 PHONE: (256) 424-4077 FAX: (256) 424-4097

BID SET



MARK	DATE	DESCRIPTION	BY

HUNTSVILLE UTILITIES
 SOUTHEAST WATER TREATMENT PLANT
GAC/BAC FILTRATION BUILDING HVAC PLAN

Project No.: 200-11740-10003
 Designed By: SBR
 Drawn By: SBR
 Checked By: DSB

M-3101

Copyright Tetra Tech
 Bar Measures 1 inch