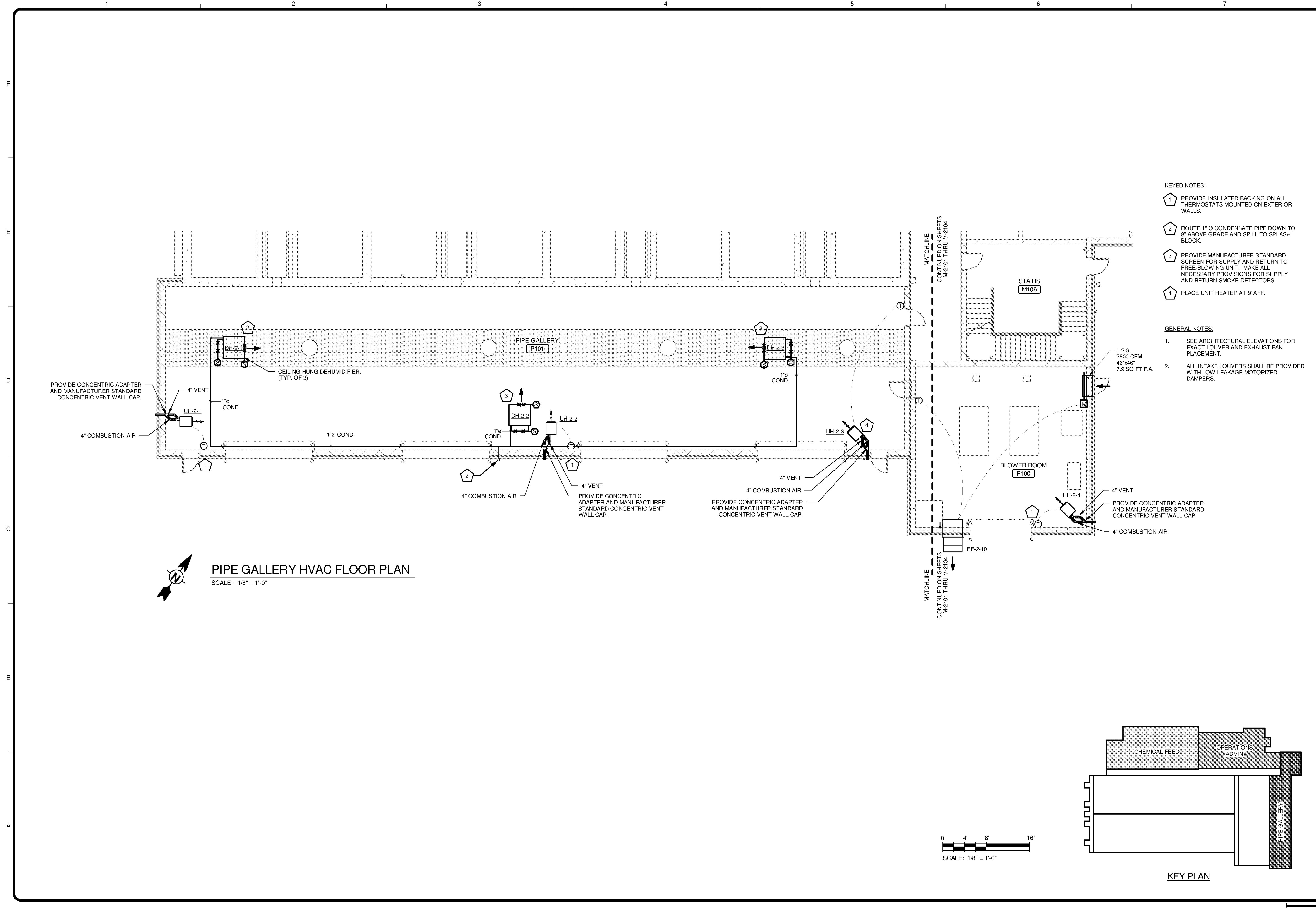
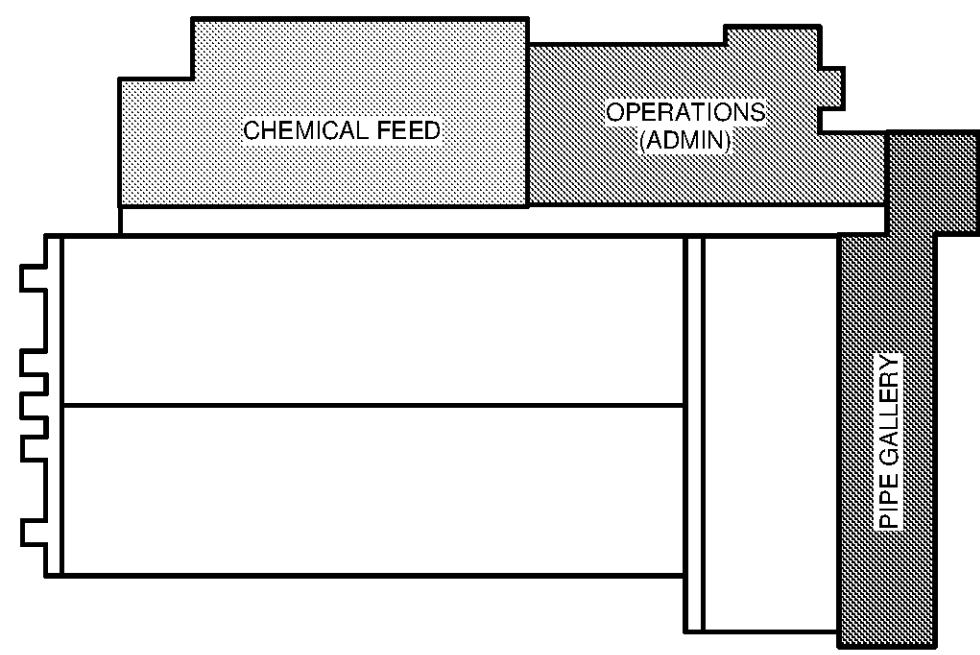
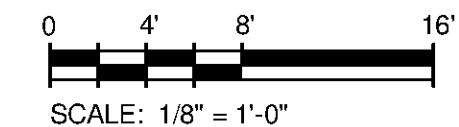


C:\Users\madison.leffler\Documents\WTP-11740-M-MAIN\PP_madison.leffler.rvt



PIPE GALLERY HVAC FLOOR PLAN
SCALE: 1/8" = 1'-0"



KEY PLAN

- KEYED NOTES:**
- 1 PROVIDE INSULATED BACKING ON ALL THERMOSTATS MOUNTED ON EXTERIOR WALLS.
 - 2 ROUTE 1" Ø CONDENSATE PIPE DOWN TO 8" ABOVE GRADE AND SPILL TO SPLASH BLOCK.
 - 3 PROVIDE MANUFACTURER STANDARD SCREEN FOR SUPPLY AND RETURN TO FREE-BLOWING UNIT. MAKE ALL NECESSARY PROVISIONS FOR SUPPLY AND RETURN SMOKE DETECTORS.
 - 4 PLACE UNIT HEATER AT 9' AFF.
- GENERAL NOTES:**
1. SEE ARCHITECTURAL ELEVATIONS FOR EXACT LOUVER AND EXHAUST FAN PLACEMENT.
 2. ALL INTAKE LOUVERS SHALL BE PROVIDED WITH LOW-LEAKAGE MOTORIZED DAMPERS.

TETRA TECH
www.tetra.tech.com
101 QUALITY CIRCLE, SUITE 140
HUNTSVILLE, ALABAMA 35895
PHONE: (256) 424-4077 FAX: (256) 424-4087

BID SET

MARK	DATE	DESCRIPTION	BY

HUNTSVILLE UTILITIES	Project No.: 200-11740-10003
SOUTHEAST WATER TREATMENT PLANT	Designed By: SBR
MAIN PROCESS BUILDING	Drawn By: SBR
PIPE GALLERY HVAC PLAN	Checked By: DSB

M-2106