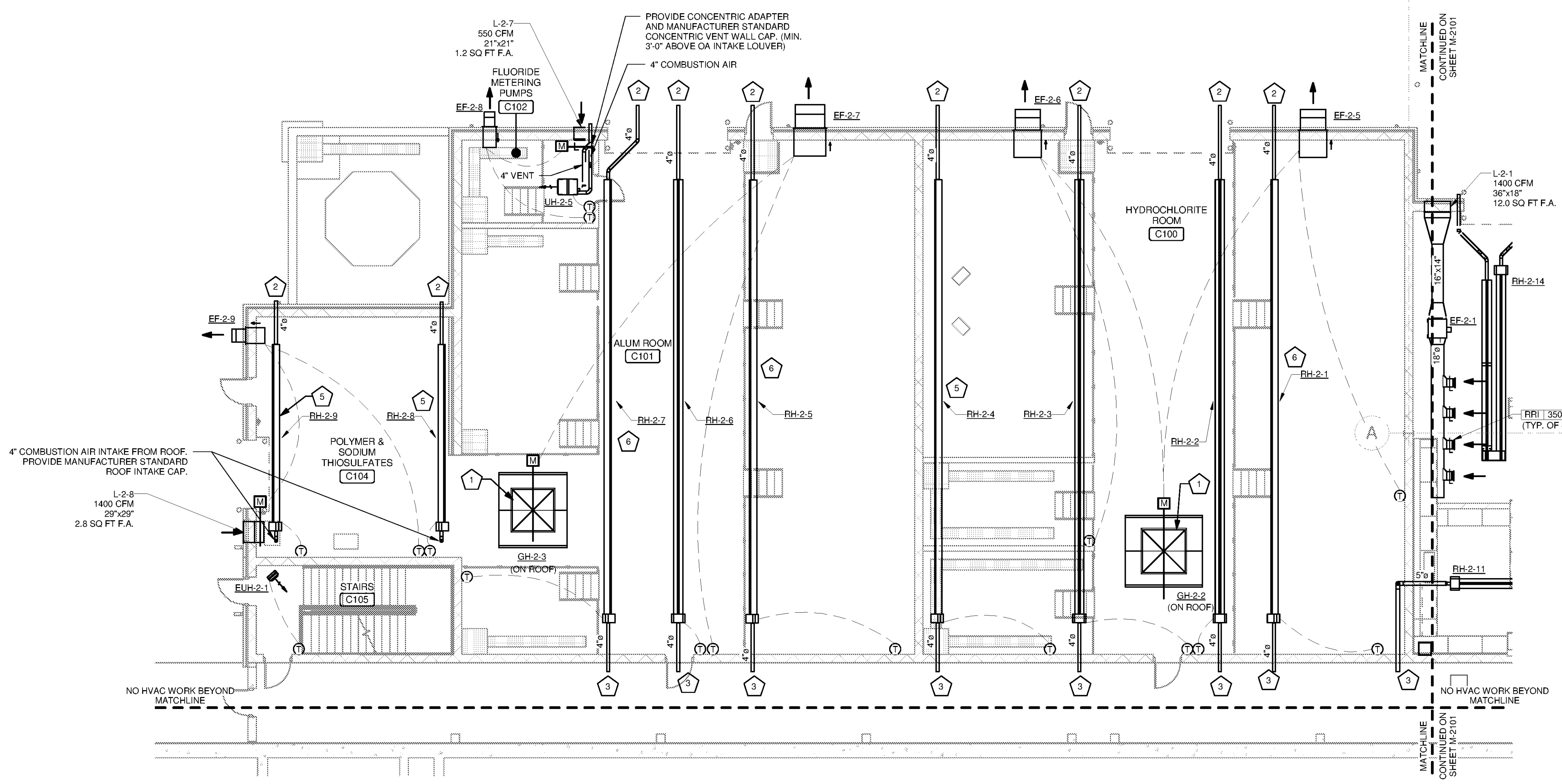


10/1/2014 5:30:49 PM C:\Users\madison.leffler\Documents\WTP-11740-M-MAIN\PP_madison.leffler.rvt

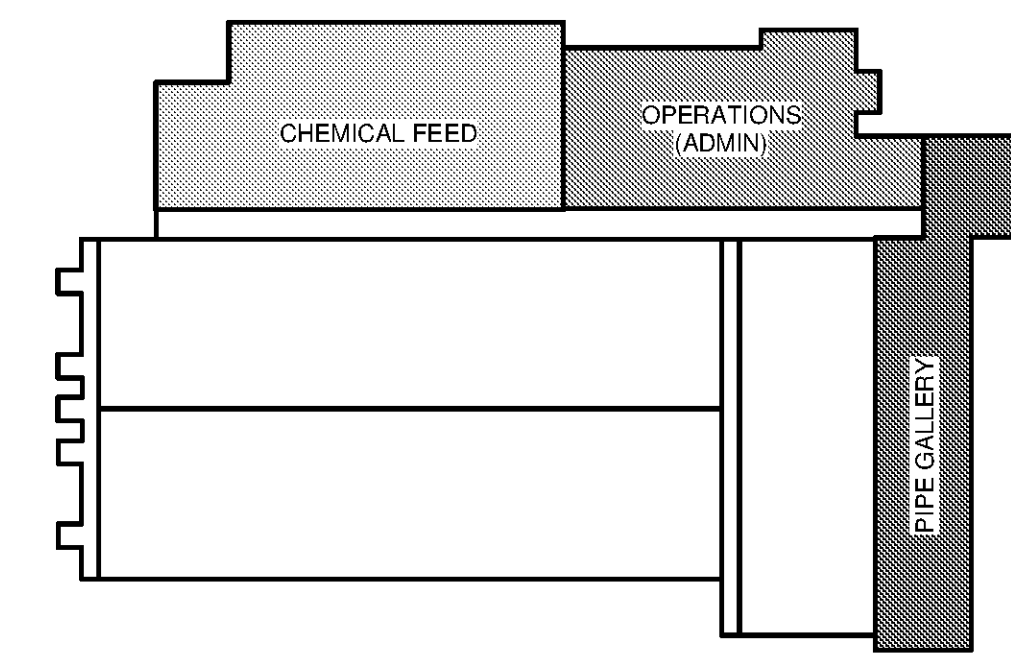
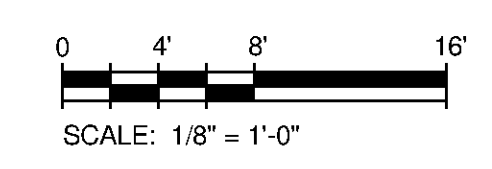
1 2 3 4 5 6 7

F
E
D
C
B
A



CHEMICAL FEED HVAC FLOOR PLAN
SCALE: 1/8" = 1'-0"

- KEYED NOTES:**
- 1 PROVIDE LOW LEAKAGE MOTORIZED DAMPER IN OUTDOOR AIR DUCT. PROVIDE BELLMOUTH FITTING AND HARDWARE CLOTH AT DUCT OPENING.
 - 2 4" SIDEWALL VENT PENETRATION WITH THIMBLE. PROVIDE MANUFACTURER STANDARD SIDEWALL VENT CAP.
 - 3 4" SIDEWALL COMBUSTION AIR INTAKE PENETRATION TO OUTDOORS. PROVIDE MANUFACTURER STANDARD AIR INTAKE CAP.
 - 4 PROVIDE INSULATED BACKING ON ALL THERMOSTATS MOUNTED ON EXTERIOR WALLS.
 - 5 INSTALL WITH 45° MOUNTING ANGLE TO DIRECT RADIANT HEAT TOWARD CENTER OF ROOM.
 - 6 INSTALL WITH 45° MOUNTING ANGLE TO DIRECT RADIANT HEAT TOWARD SIDE OF ROOM.
- GENERAL NOTES:**
1. ALL VENTS AND CONCENTRIC VENTS SHALL BE INSTALLED WITH A MINIMUM HORIZONTAL DISTANCE OF 10'-0" FROM ANY MECHANICAL AIR INTAKE LOUVERS. IF VENT IS WITHIN 10'-0" HORIZONTALLY OF THE INTAKE LOUVER, IT MUST BE MOUNTED A MINIMUM OF 3'-0" ABOVE LOUVER. IN ADDITION, VENTS SHALL NOT BE INSTALLED LESS THAN 1'-0" ABOVE ANY DOOR OPENING.



TETRA TECH
www.tetra.tech.com
101 QUALITY CIRCLE, SUITE 140
HUNTSVILLE, ALABAMA 35895
PHONE: (256) 424-4077 FAX: (256) 424-4087

BID SET

MARK	DATE	DESCRIPTION	BY

HUNTSVILLE UTILITIES
SOUTHEAST WATER TREATMENT PLANT
**MAIN PROCESS BUILDING
CHEMICAL FEED HVAC
FLOOR PLAN**

Project No.: 200-11740-10003
Designed By: SBR
Drawn By: SBR
Checked By: DSB

M-2105

Copyright Tetra Tech
Bar Measures 1 Inch