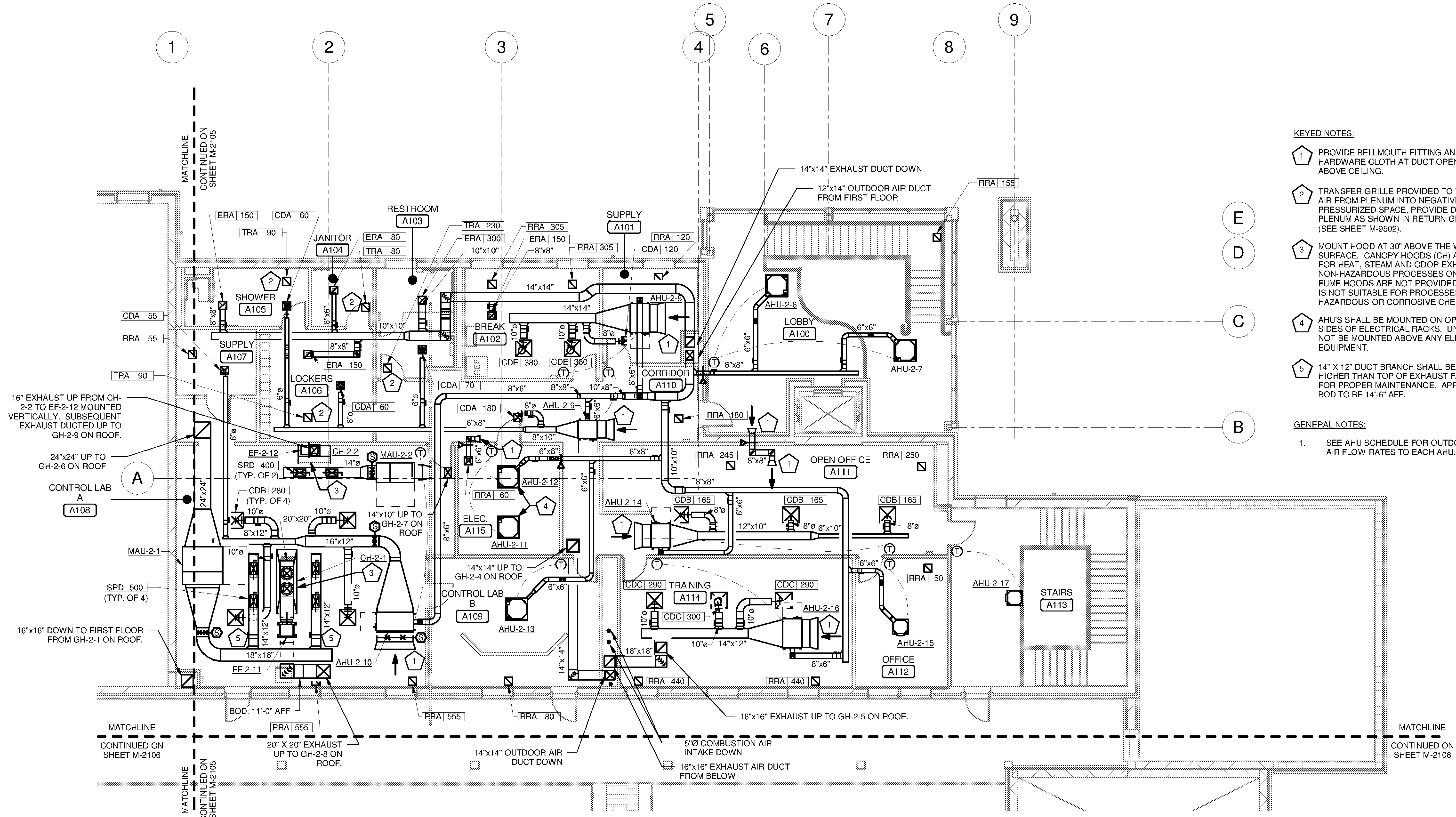
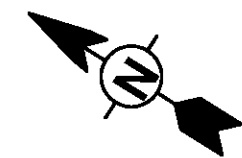


10/1/2014 4:38:06 PM C:\Users\madison.leffler\Documents\WTP-11740-M-MAIN\PPR\_madison.leffler.rvt

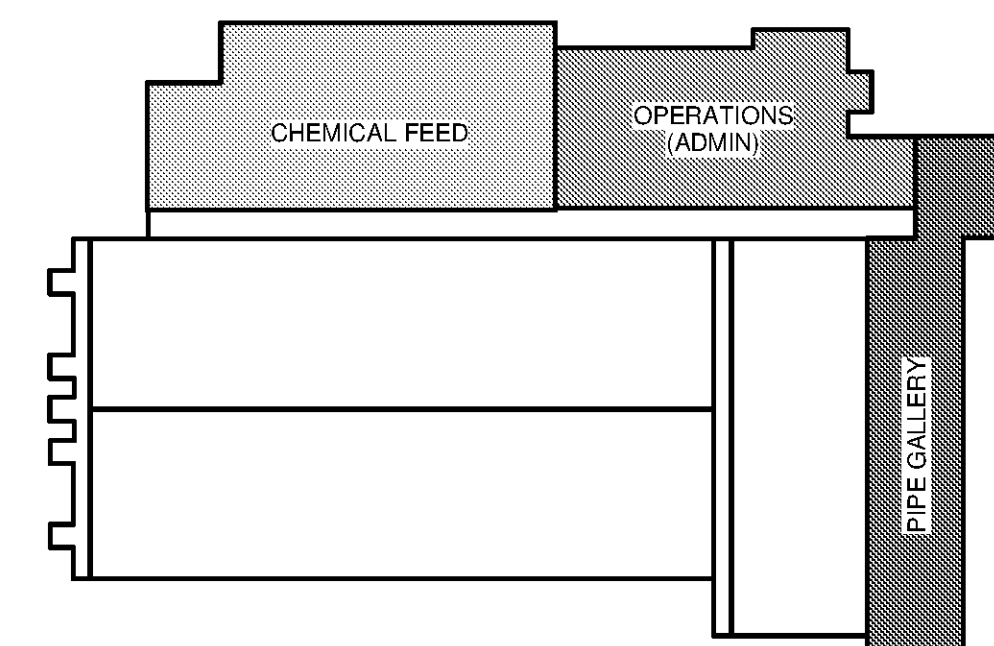
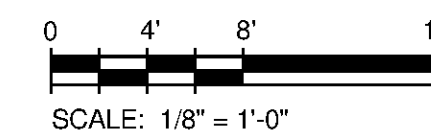


**OPERATIONS SECOND FLOOR HVAC PLAN**

SCALE: 1/8" = 1'-0"



- KEYED NOTES:**
- 1 PROVIDE BELLMOUTH FITTING AND HARDWARE CLOTH AT DUCT OPENING ABOVE CEILING.
  - 2 TRANSFER GRILLE PROVIDED TO TRANSFER AIR FROM PLENUM INTO NEGATIVELY PRESSURIZED SPACE. PROVIDE DUCT INTO PLENUM AS SHOWN IN RETURN GRILLE DETAIL (SEE SHEET M-9502).
  - 3 MOUNT HOOD AT 30" ABOVE THE WORKING SURFACE. CANOPY HOODS (CH) ARE PROVIDED FOR HEAT, STEAM AND ODOR EXHAUST DUE TO NON-HAZARDOUS PROCESSES ONLY. CERTIFIED FUME HOODS ARE NOT PROVIDED, AND THE LAB IS NOT SUITABLE FOR PROCESSES USING HAZARDOUS OR CORROSIVE CHEMICALS.
  - 4 AHU'S SHALL BE MOUNTED ON OPPOSITE SIDES OF ELECTRICAL RACKS. UNITS SHALL NOT BE MOUNTED ABOVE ANY ELECTRICAL EQUIPMENT.
  - 5 14" X 12" DUCT BRANCH SHALL BE INSTALLED HIGHER THAN TOP OF EXHAUST FAN TO ALLOW FOR PROPER MAINTENANCE. APPROXIMATE BOD TO BE 14'-6" AFF.
- GENERAL NOTES:**
1. SEE AHU SCHEDULE FOR OUTDOOR AIR FLOW RATES TO EACH AHU.



**KEY PLAN**



**BID SET**



MARK	DATE	DESCRIPTION	BY

HUNTSVILLE UTILITIES  
SOUTHEAST WATER TREATMENT PLANT  
**MAIN PROCESS BUILDING  
OPERATIONS SECOND  
FLOOR HVAC PLAN**

Project No.: 200-11740-10003  
Designed By: SBR  
Drawn By: SBR  
Checked By: DSB

**M-2102**

Bar Measures 1 Inch

Copyright: Tetra Tech

www.tetra-tech.com  
101 QUALITY CIRCLE, SUITE 140  
HUNTSVILLE, ALABAMA 35895  
PHONE: (256) 424-4077 FAX: (256) 424-4087