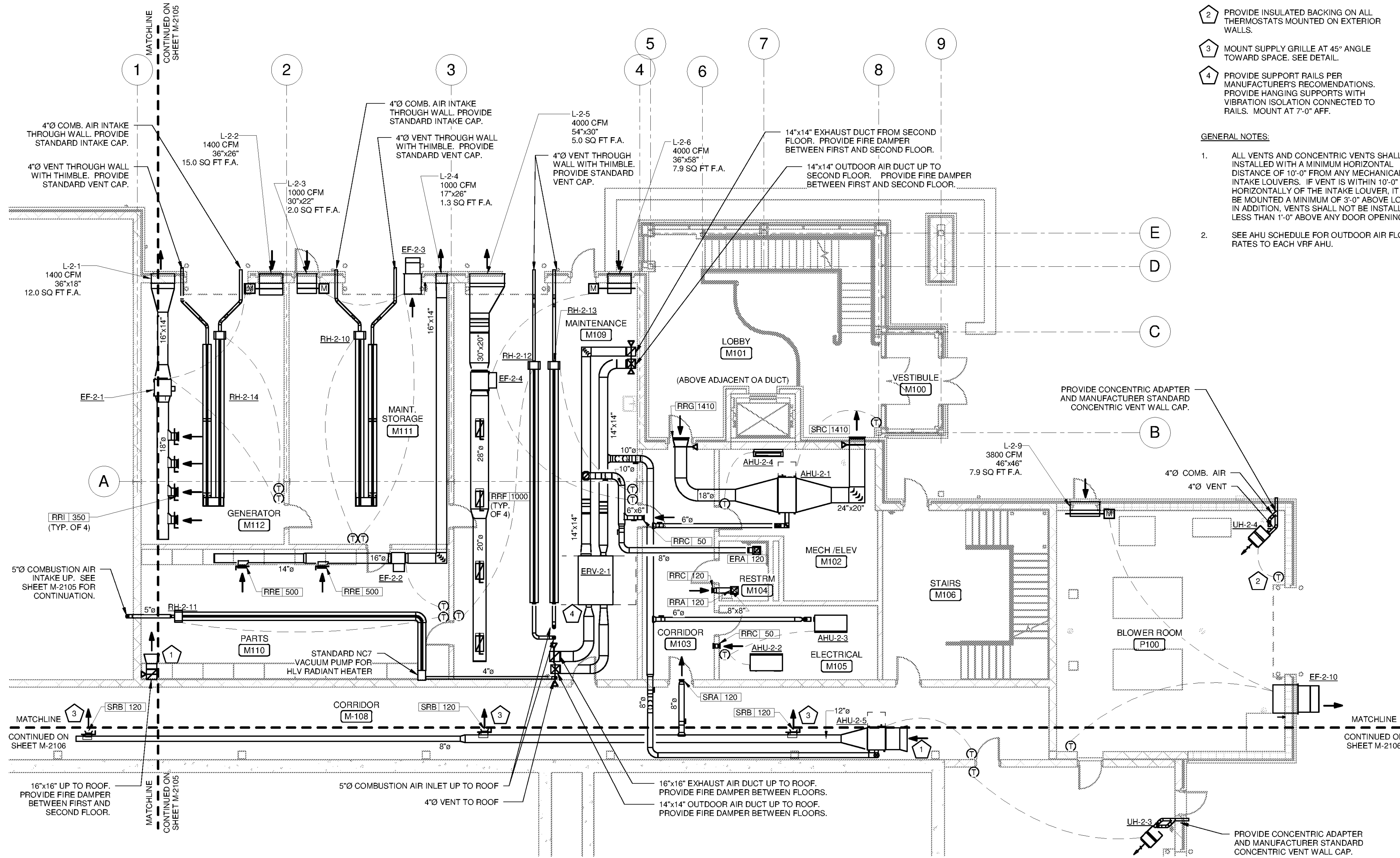
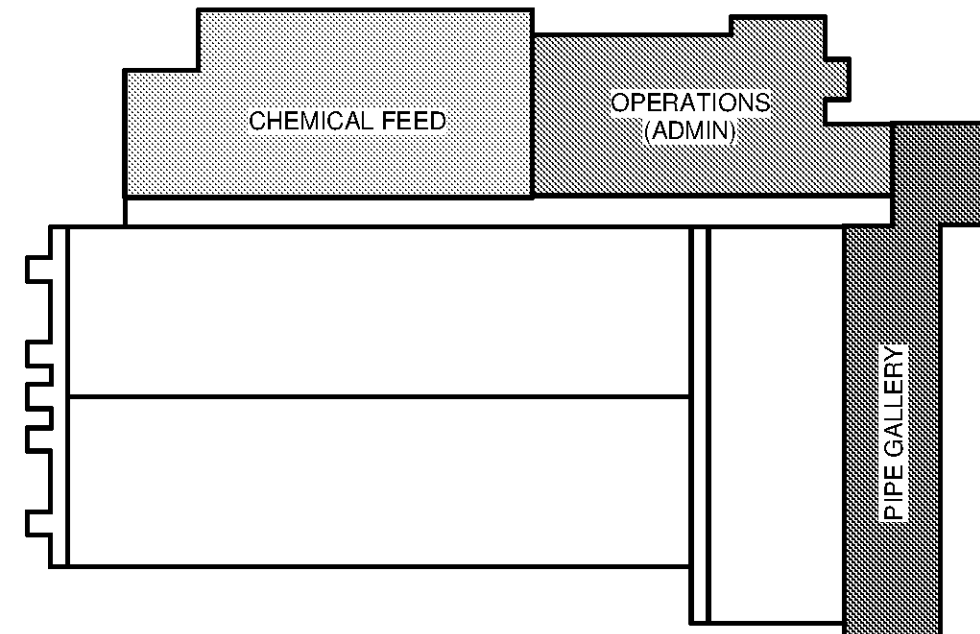
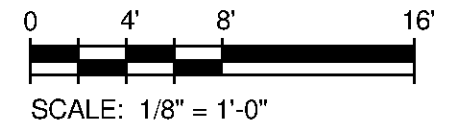
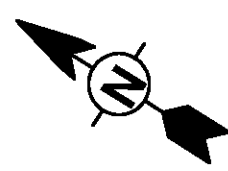


C:\Users\madison.leffler\Documents\WTP-11740-M-MAIN\PP_madison.leffler.rvt



- KEYED NOTES:**
- 1 PROVIDE BELLMOUTH FITTING AND HARDWARE CLOTH AT DUCT OPENING.
 - 2 PROVIDE INSULATED BACKING ON ALL THERMOSTATS MOUNTED ON EXTERIOR WALLS.
 - 3 MOUNT SUPPLY GRILLE AT 45° ANGLE TOWARD SPACE. SEE DETAIL.
 - 4 PROVIDE SUPPORT RAILS PER MANUFACTURER'S RECOMMENDATIONS. PROVIDE HANGING SUPPORTS WITH VIBRATION ISOLATION CONNECTED TO RAILS. MOUNT AT 7'-0" AFF.
- GENERAL NOTES:**
1. ALL VENTS AND CONCENTRIC VENTS SHALL BE INSTALLED WITH A MINIMUM HORIZONTAL DISTANCE OF 10'-0" FROM ANY MECHANICAL AIR INTAKE LOUVERS. IF VENT IS WITHIN 10'-0" HORIZONTALLY OF THE INTAKE LOUVER, IT MUST BE MOUNTED A MINIMUM OF 3'-0" ABOVE LOUVER. IN ADDITION, VENTS SHALL NOT BE INSTALLED LESS THAN 1'-0" ABOVE ANY DOOR OPENING.
 2. SEE AHU SCHEDULE FOR OUTDOOR AIR FLOW RATES TO EACH VRF AHU.

OPERATIONS FIRST FLOOR HVAC PLAN
SCALE: 1/8" = 1'-0"



KEY PLAN

TETRA TECH
www.tetra.tech.com
101 QUALITY CIRCLE, SUITE 140
HUNTSVILLE, ALABAMA 35895
PHONE: (256) 424-4077 FAX: (256) 424-4087

BID SET

MARK	DATE	DESCRIPTION	BY

HUNTSVILLE UTILITIES
SOUTHEAST WATER TREATMENT PLANT
**MAIN PROCESS BUILDING
OPERATIONS FIRST FLOOR
HVAC PLAN**

Project No.: 200-11740-10003
Designed By: SBR
Drawn By: SBR
Checked By: DSB

M-2101

Bar Measures 1 Inch

Copyright: Tetra Tech