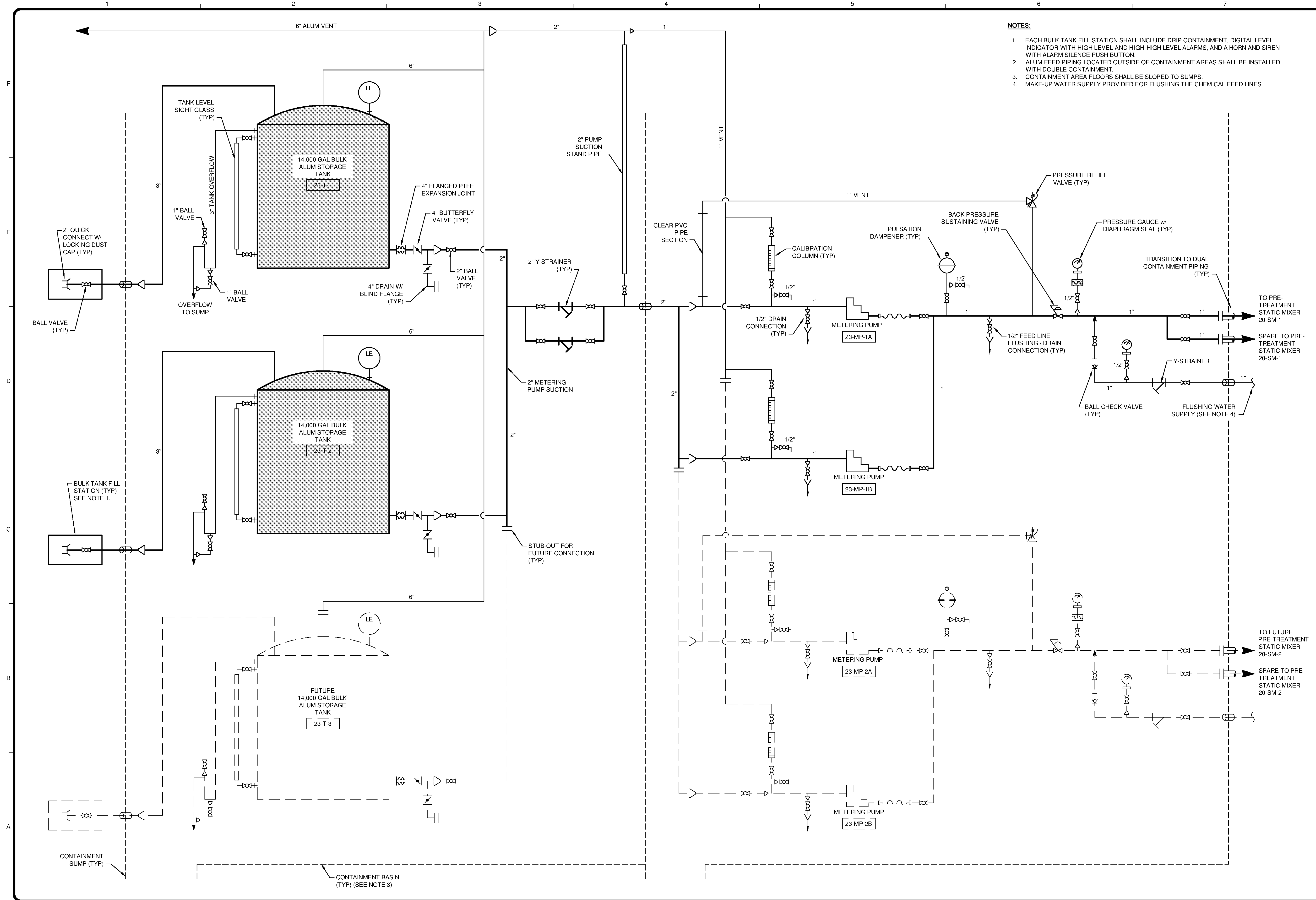


10/17/2014 3:46:34 PM P:\IER\11740\200-11740-10003\CAD\3SHEET\FILESTREATMENT PLANT\WTP-D-00X\PROCESS FLOW DIAGRAMS.DWG - EVANS, JON



- NOTES:**
1. EACH BULK TANK FILL STATION SHALL INCLUDE DRIP CONTAINMENT, DIGITAL LEVEL INDICATOR WITH HIGH LEVEL AND HIGH-HIGH LEVEL ALARMS, AND A HORN AND SIREN WITH ALARM SILENCE PUSH BUTTON.
 2. ALUM FEED PIPING LOCATED OUTSIDE OF CONTAINMENT AREAS SHALL BE INSTALLED WITH DOUBLE CONTAINMENT.
 3. CONTAINMENT AREA FLOORS SHALL BE SLOPED TO SUMPS.
 4. MAKE-UP WATER SUPPLY PROVIDED FOR FLUSHING THE CHEMICAL FEED LINES.

TETRA TECH

 www.tetrattech.com
 101 QUALITY CIRCLE, SUITE 140
 HUNTSVILLE, ALABAMA 35806
 PHONE: (256) 424-4077 FAX: (256) 424-4097

BID SET

MARK	DATE	DESCRIPTION

HUNTSVILLE UTILITIES
 SOUTHEAST WATER TREATMENT PLANT
ALUM FEED SYSTEM PROCESS PIPING SCHEMATIC

Project No.: 200-11740-10003
 Designed By: JCB
 Drawn By: JTE
 Checked By: JEC

D-2110

Bar Measures 1 inch