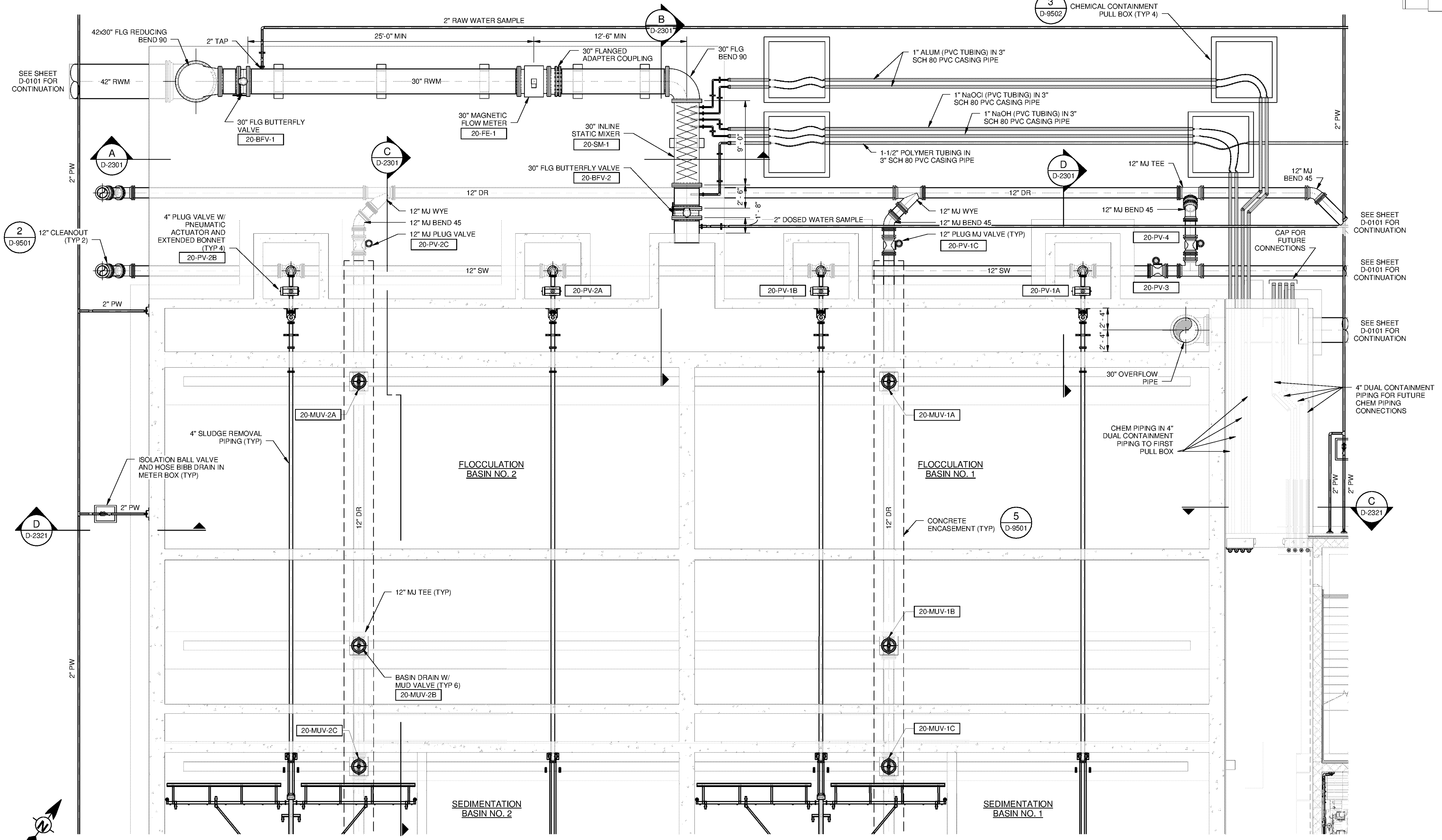
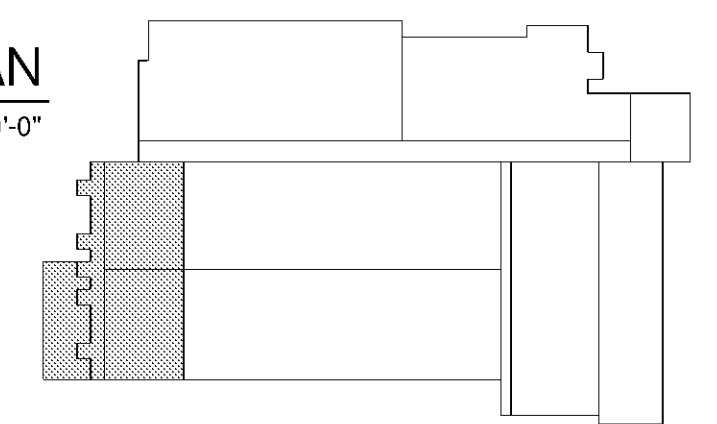


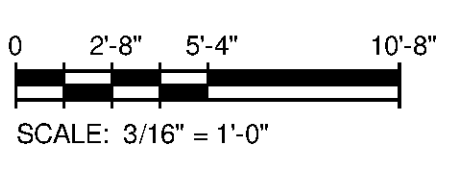
**NOTES:**

- HEAT TRACE & INSULATE ALL EXPOSED POTABLE WATER, FLUSHING WATER, SAMPLE PIPING AND CHEMICAL PIPING.
- ALL PIPING WITHIN BASINS SHALL BE FLANGED DUCTILE IRON PIPE UNLESS NOTED OTHERWISE.

**KEY PLAN**  
SCALE: 1" = 100'-0"



**PLAN**  
SCALE: 3/16" = 1'-0"



**TETRA TECH**  
www.tetrattech.com  
101 QUALITY CIRCLE, SUITE 140  
HUNTSVILLE, ALABAMA 35896  
PHONE: (256) 424-4077 FAX: (256) 424-4087

**BID SET**  
Professional Engineer Seal for J. C. B. Evans, No. 10227, State of Alabama.

SEE SHEET D-0101 FOR CONTINUATION  
SEE SHEET D-0101 FOR CONTINUATION  
SEE SHEET D-0101 FOR CONTINUATION

MARK	DATE	DESCRIPTION	BY

HUNTSVILLE UTILITIES  
SOUTHEAST WATER TREATMENT PLANT  
**PRE-TREATMENT STATIC MIXER & FLOCCULATION BASIN LOWER PLAN**

Project No.: 200-11740-10003  
Designed By: JCB  
Drawn By: JTE  
Checked By: JPT

**D-2102**

Bar Measures 1 Inch

10/17/2014 4:32:57 PM C:\Users\jon.evans\Desktop\Active Projects\Revit\WTP-11740-D-MAINPR\_jon.evans.rvt

Copyright: Tetra Tech