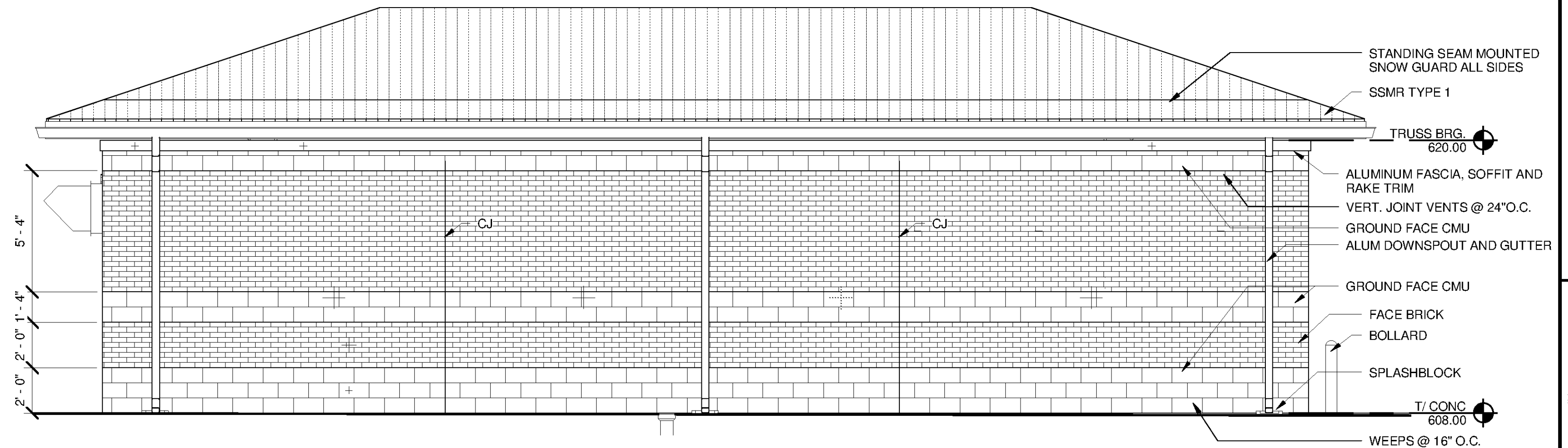


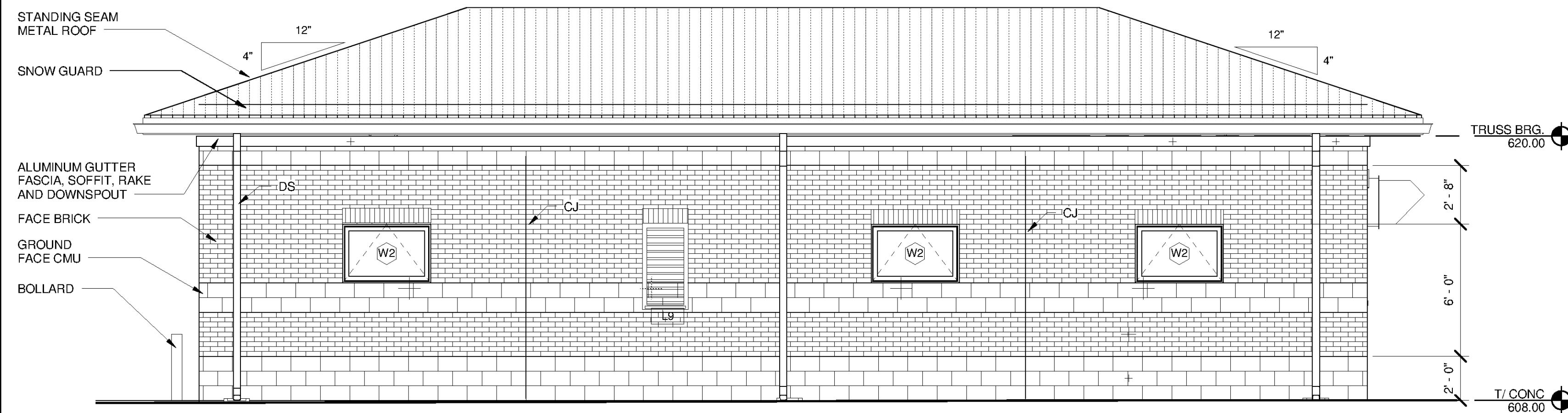
1 EAST ELEVATION
A-5102 SCALE: 1/4" = 1'-0"



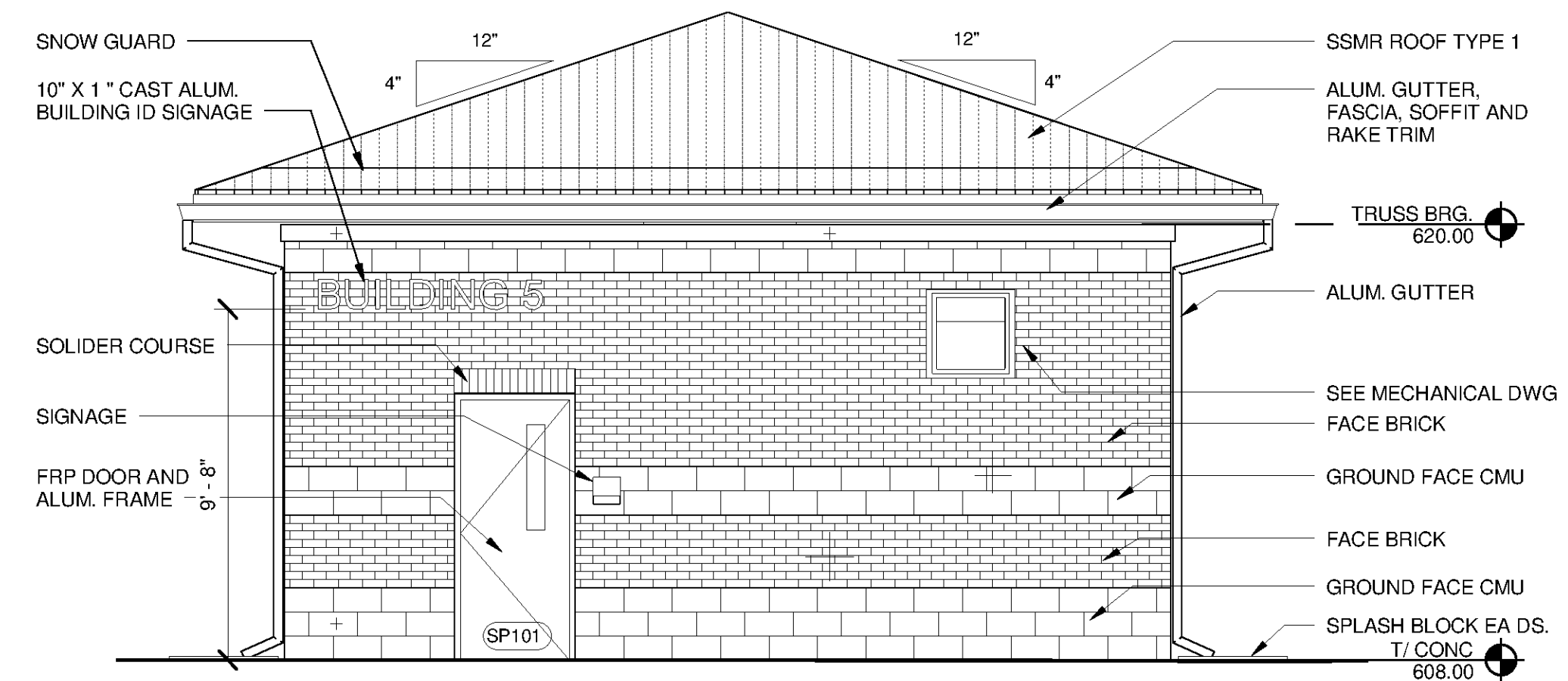
3 SOUTH ELEVATION
A-5102 SCALE: 1/4" = 1'-0"

GENERAL NOTES - MASONRY VENTS AND WEEPS

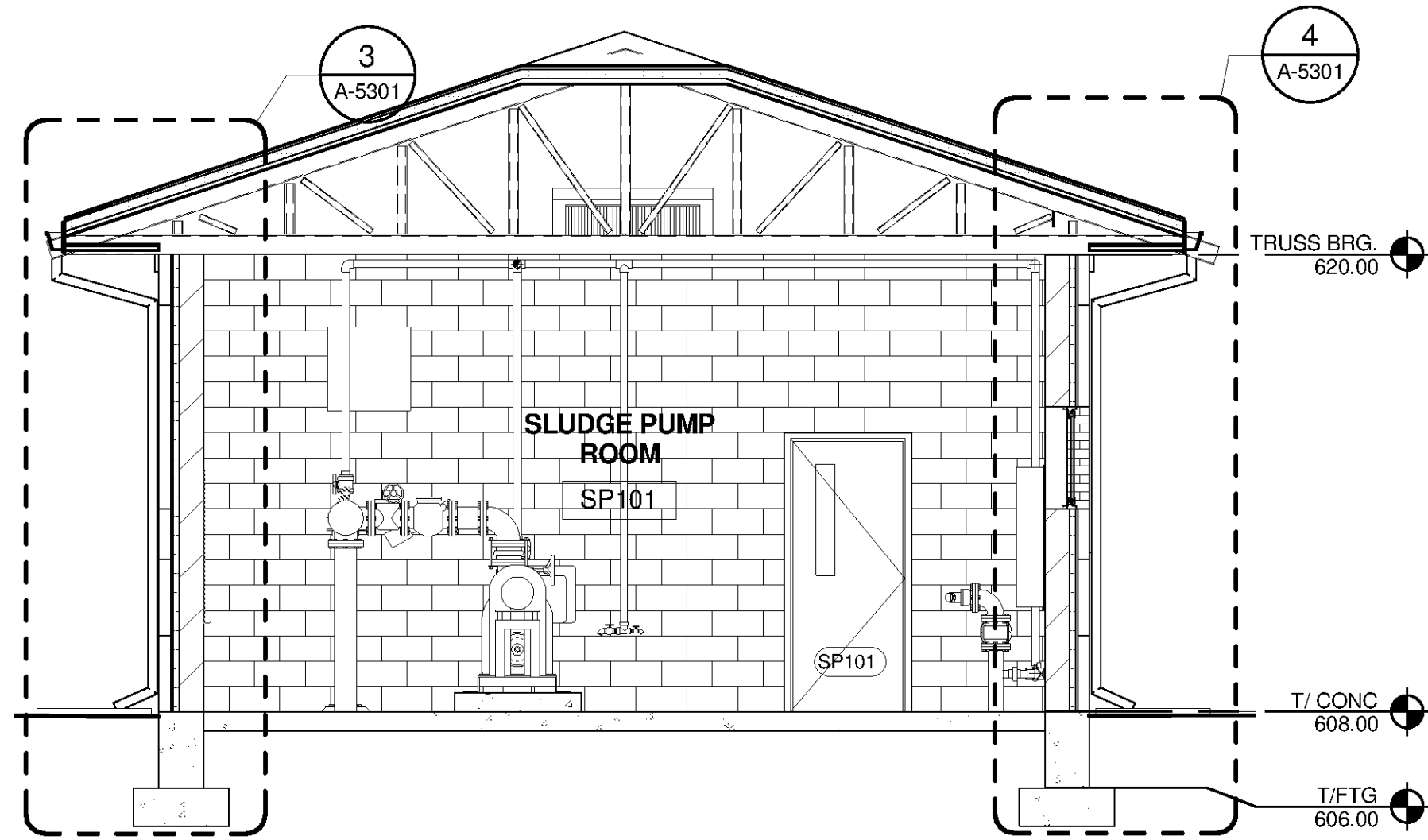
- VERTICAL JOINT MASONRY VENTS LOCATED AT TOP OF WALL SHALL BE MODULAR INSERTS WITH INSECT RESISTANT VENT OPENINGS.
- VENTS SHALL BE SPACE @ 24" O.C. IN FACE BRICK OR AT 16" O.C. IN GROUND FACE MASONRY.
- WEEPS AT WALL BASE SHALL BE LOCATED ABOVE THROUGHWALL FLASHING AND BE TUBE AND WICK OR INSECT RESISTANT VENT AND WICK CONSTRUCTION
- WEEPS SHALL BE SPACE @ 24" O.C. IN FACE BRICK OR AT 16" O.C. IN GROUND FACE MASONRY.



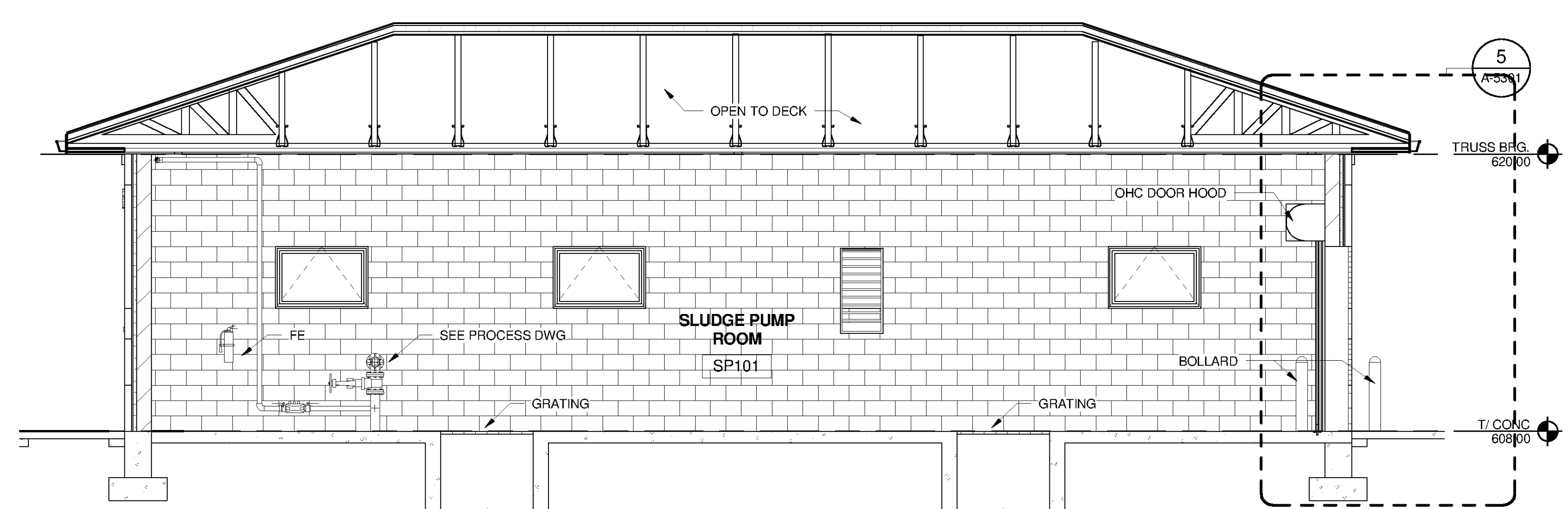
2 NORTH ELEVATION
A-5102 SCALE: 1/4" = 1'-0"



4 WEST ELEVATION
A-5102 SCALE: 1/4" = 1'-0"



A SECTION
A-5102 SCALE: 1/4" = 1'-0"



B SECTION
A-5102 SCALE: 1/4" = 1'-0"



BID SET

MARK	DATE	DESCRIPTION	BY

HUNTSVILLE UTILITIES
SOUTHEAST WATER TREATMENT PLANT
**THICKENED SLUDGE PUMP
STATION ARCHITECTURAL
EXTERIOR ELEVATIONS**

Project No.: 200-11740-10003
Designed By: Q BIAGI
Drawn By: Q BIAGI
Checked By: D GALANTE

A-5201

Copyright: Tetra Tech
Bar Measures 1 Inch

9/30/2014 4:38:02 PM C:\Users\brent.fox\Documents\WTP-11740-S-THCKPS_brent.fox.rvt