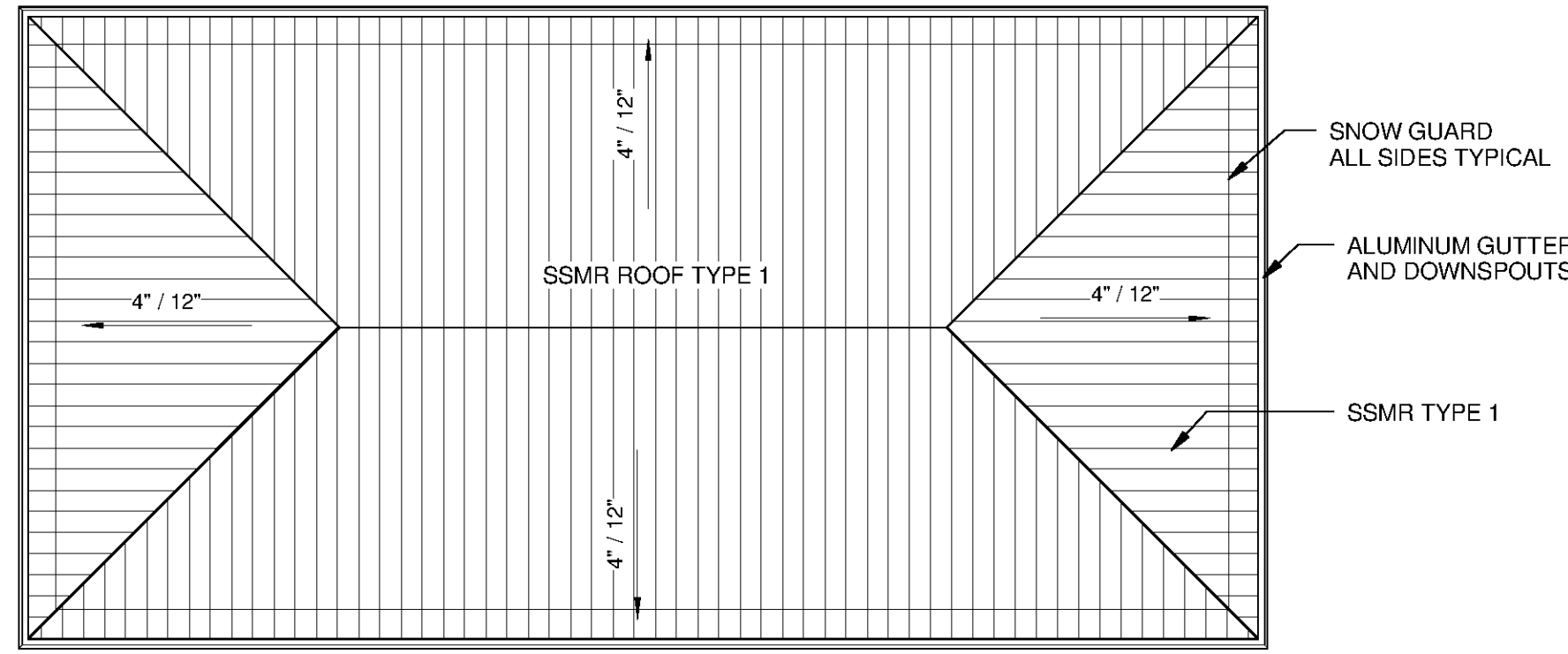
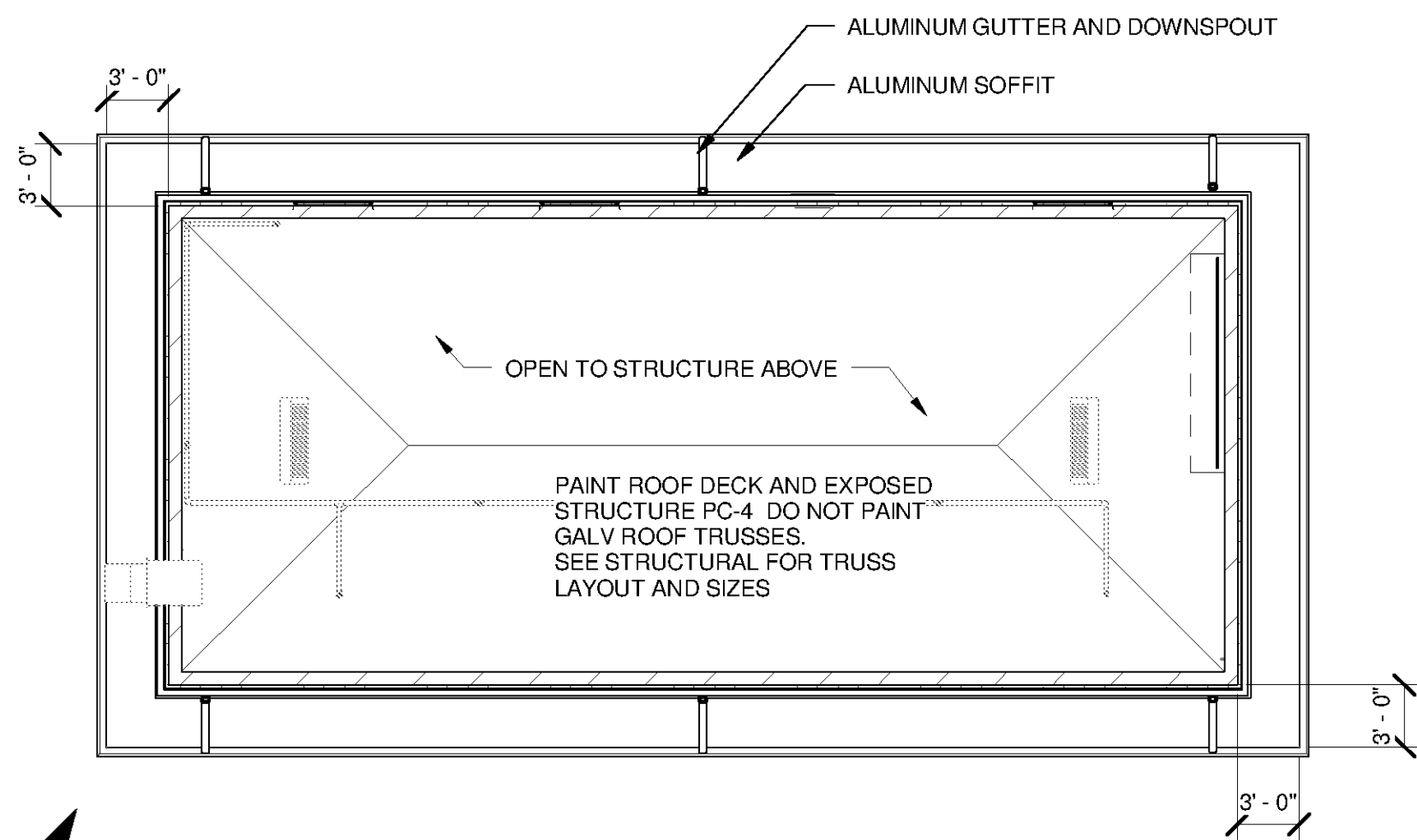


9/30/2014 4:37:57 PM C:\Users\brent.fox\Documents\WTP-11740-S-THCKPS\_brent.fox.rvt

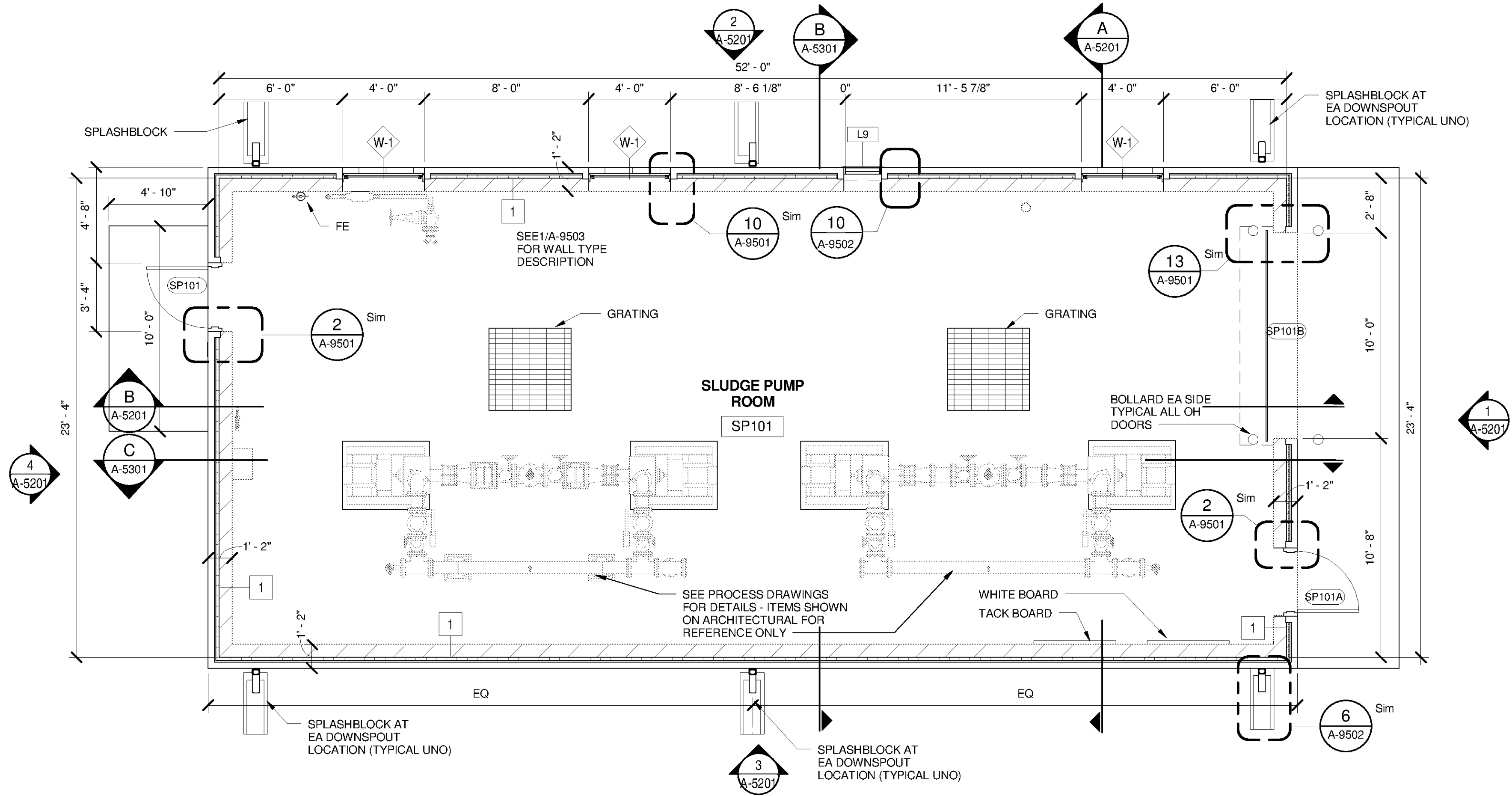


**ROOF PLAN**  
SCALE: 1/8" = 1'-0"

GENERAL NOTES - ROOFING	
1	ROOF TYPE 1: BASIS OF DESIGN - FIRESTONE UNA-CLAD 6 STANDING SEAM, .040" (1.02 mm) PREFINISHED ALUMINUM ON SELF ADHERING UNDERLAYMENT MEMBRANE (CLAD-GUARD SA) ON FIRESTONE ISO 95+ GL INSULATION ON STEEL DECK OR APPROVED EQUAL. PROVIDE SEAM MOUNTED SNOW GUARD RAIL.
2	VERIFY SIZE, LOCATION AND NUMBER OF ROOF PENETRATIONS INCLUDING VENTS, PIPES, CURBS, ROOF DRAINS, CONDUITS, ETC. PROVIDE NEW FLASHING AND SEAL PENETRATIONS WHETHER OR NOT INDICATED ON THE DRAWINGS.
3	COMPLETE WORK ABOVE ROOF, SUCH AS MASONRY, WELDING, MASONRY RESTORATION, ETC., PRIOR TO STARTING ROOFING WORK.
4	VERIFY AND MAINTAIN ROOF SLOPES AND DRAINAGE PATTERNS. TEST FOR AND CORRECT ANY PONDING CONDITIONS.
5	REPAIR AND REPLACE ROOFING SYSTEM OR STRUCTURE DAMAGED BY IMPROPER STORAGE, CONSTRUCTION ACTIVITIES, OR LACK OF ADEQUATE TEMPORARY PROTECTION. THIS ALSO INCLUDES INTERIOR DAMAGE TO FINISHES, EQUIPMENT, FURNISHINGS, ETC., RESULTING FROM LEAKS.
6	NEW BLOCKING SHALL BE FIRE RESISTANT TREATED WOOD.
7	ROOF TYPE 2: BASIS OF DESIGN - FIRESTONE EPDM FULLY ADHERED MEMBRANE ON 1/2" ISOGUARD COVER BOARD ON 3" MIN (R-20) ISO 95+ INSULATION OR APPROVED EQUAL.
8	ROOF TYPE 3: BASIS OF DESIGN - HYDROTECH SPLIT SLAB CONCRETE TOPPING SLAB ON HYDRORAIN ON STYROFOAM RIGID INSULATION ON HYDROFLEX ON MONOLITHIC MEMBRANE 6125-FR ON SUFACE CONDITIONER ON STRUCTURAL CONCRETE SLAB OR APPROVED EQUAL.
9	SEE ROOFING DETAILS SHEET A-9504.
10	REFER TO MECHANICAL DRAWINGS TO COORDINATE ROOF CONDUCTOR LOCATIONS.
11	METAL GUTTERS SLOPE 1/16" PER FOOT
12	TAPERED RIGID INSULATION CRICKETS SLOPE 1/8" PER FOOT MINIMUM
13	PROVIDE SPLASH BLOCK AND 45 DEGREE TRANSITION AT ALL DOWNSPOUTS UNO.
14	PROVIDE ROOF SYSTEM (MEMBRANE, FLASHING COPINGS, CURBS, SSMR, ETC.) CAPABLE OF MEETING DESIGN REQUIREMENTS FOR PROJECT LOCATION (HUNTSVILLE, ALABAMA)



**REFLECTED CEILING PLAN**  
SCALE: 1/8" = 1'-0"

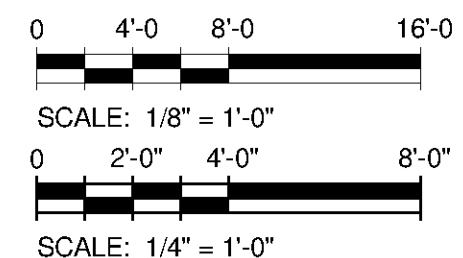


**FLOOR PLAN**  
SCALE: 1/4" = 1'-0"

GENERAL NOTES - FLOOR PLANS	
1	REFER TO WALL TYPE DETAILS FOR WALL TYPES INDICATED SHEET A-9503
2	REFER TO ROOM SCHEDULE FOR FLOOR FINISH AND WALL FINISH ON SHEET A-5102.
3	REFER TO REFLECTED CEILING PLANS FOR CEILING TYPES AND CEILING HEIGHTS ON SHEET A-5102.
4	REFER TO FRAME TYPES FOR WINDOW & DOOR FRAME TYPES SHOWN. SEE SHEET A-9601
5	REFER TO MECHANICAL, ELECTRICAL, STRUCTURAL AND PROCESS EQUIPMENT FOR DETAILS, EQUIPMENT SHOWN FOR REFERENCE ONLY
6	TYPICAL FIRST FLOOR ELEVATION TO BE 0'-0" UNO DATUM ELEVATION COORDINATE WITH ACTUAL ELEVATIONS. REFER TO CIVIL DRAWINGS.
7	SEE SHEET A-9501, A-9502, A-9503, A-9504 & A-9505 FOR TYPICAL DETAILS
8	REFER TO CORRESPONDING DETAIL NUMBER ON SHEET A-9503 FOR WALL TYPES

DOOR SCHEDULE															
DOOR NUMBER	TYPE	DOOR				FRAME				Sill Detail	HDW Set	SIGN TYPE	SIGN NOTATION	REMARKS	
		MATERIAL	WIDTH	HEIGHT	RATING	TYPE	MATERIAL	RATING	HEAD						JAMB
SP101	N	FRP	3'-0"	7'-2"	-	F2	ALUM	-	1/A-9501	2/A-9501	11/A-9501	6	E	24	
SP101A	N	FRP	3'-0"	7'-2"	-	F2	ALUM	-	1/A-9501	2/A-9501	11/A-9501	6	E	25	
SP101B	OHC	ALUM	10'-0"	10'-0"	-		GALV	-	12/A-9501	13/A-9501	14/A-9501				INSULATED CHAIN OPERATED MANUAL OVERHEAD COIL DOOR

ROOM SCHEDULE															
NUMBER	ROOM NAME	FLOOR MATERIAL	FLOOR FINISH	BASE MATERIAL	NORTH WALL		EAST WALL		SOUTH WALL		WEST WALL		CEILING		COMMENTS
					MATERIAL	FINISH	MATERIAL	FINISH	MATERIAL	FINISH	MATERIAL	FINISH	MATERIAL	FINISH	
SP101	SLUDGE PUMP ROOM	CONCRETE	EPOXY	RB-1	CMU	PC-1	CMU	PC-1	CMU	PC-1	CMU	PC-1	OPEN TO DECK	PC-4	



MARK	DATE	DESCRIPTION	BY