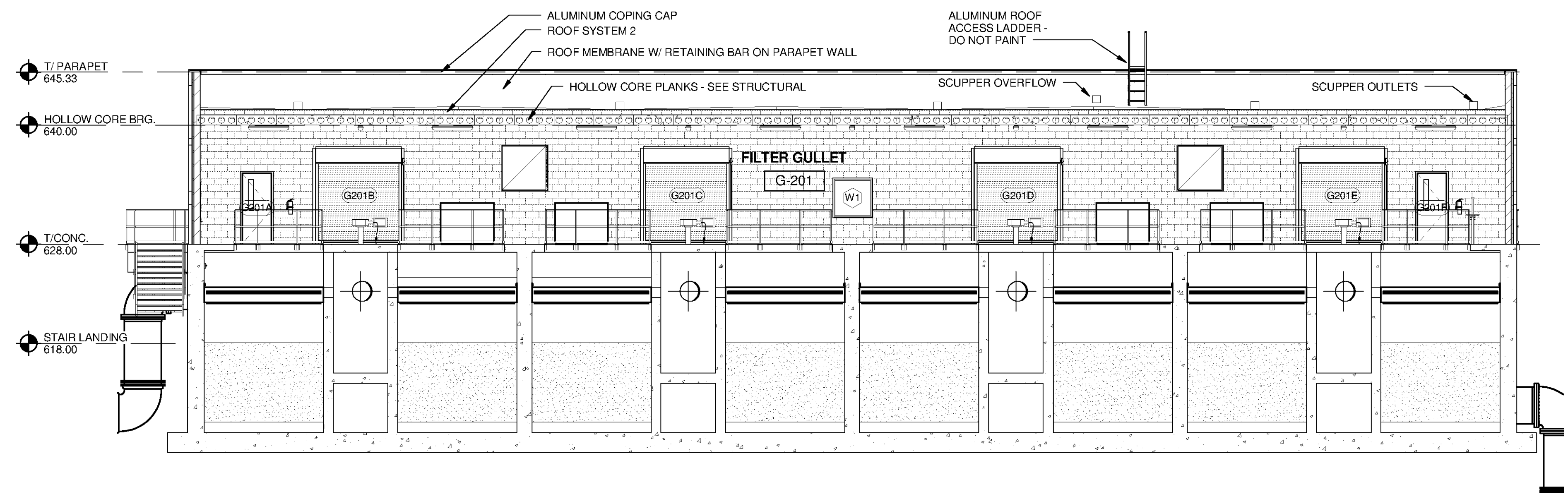
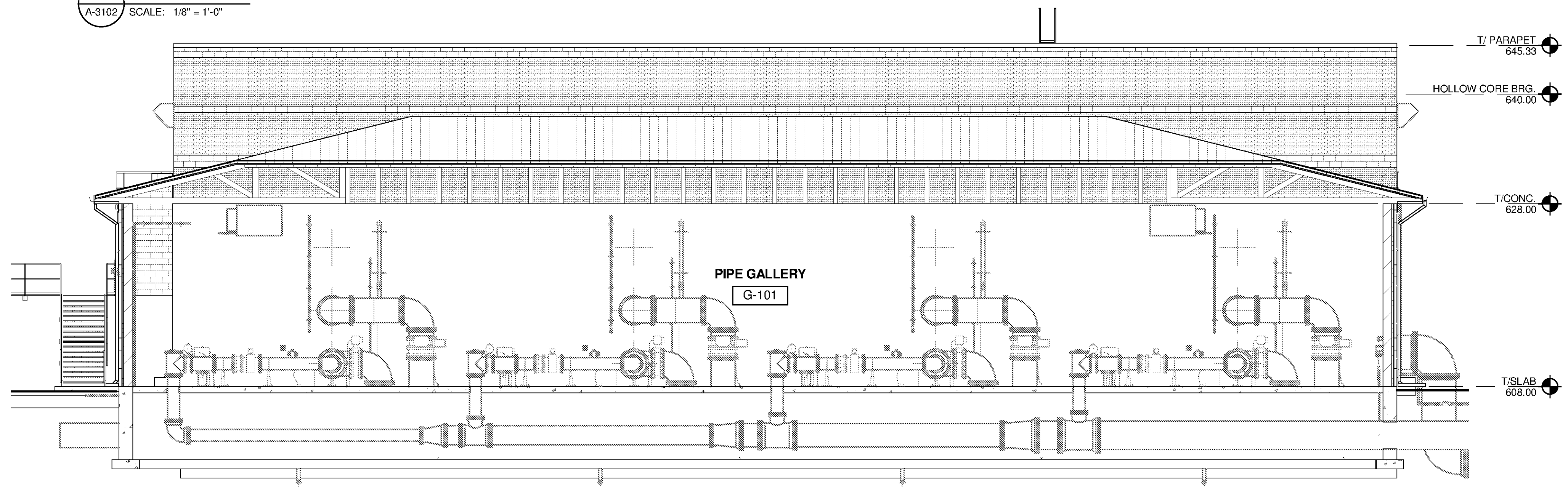


1 2 3 4 5 6 7



**C SECTION**  
A-3102 SCALE: 1/8" = 1'-0"



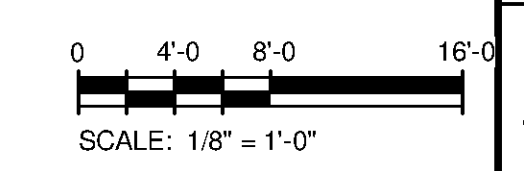
**B SECTION**  
A-3102 SCALE: 1/8" = 1'-0"

WINDOW SCHEDULE										
MARK	MANUFACTURER	MODEL	DESCRIPTION	HEIGHT	WIDTH	THICKNESS	FRAME TYPE	FRAME FINISH	GLAZING	COMMENTS
W1	Kawneer	AA 3350 AW 50 FP	Isoport Fixed Panel	4' - 0"	4' - 0"	0' - 3 1/2"	S	Aluminum - ASTM B 221 - 6063-T6	INSULATED GLASS	KYNAR 500 SKYBLUE

ROOM SCHEDULE															
NUMBER	ROOM NAME	FLOOR MATERIAL	FLOOR FINISH	BASE MATERIAL	NORTH WALL		EAST WALL		SOUTH WALL		WEST WALL		CEILING		Comments
					MATERIAL	FINISH	MATERIAL	FINISH	MATERIAL	FINISH	MATERIAL	FINISH	MATERIAL	FINISH	
G-101	PIPE GALLERY	GRATING/CONCRETE	ALUM/SEALER	RB-1	CONC/CMU	PC-1	CMU	PC-1	CMU	PC-1	CMU	PC-1	EXPOSED STRUCT	PC-4	
G-201	FILTER GULLET	GRATING/CONCRETE	ALUM/SEALER	RB-1	CMU	PC-1	CMU	PC-1	CMU	PC-1	CMU	PC-1	EXT. GRADE GWB	PC-4	8' - 10"

DOOR SCHEDULE																	
DOOR NO.	TYPE	DOOR				DOOR RATING	FRAME								SIGN TYPE	SIGN NOTATION	REMARKS
		MATERIAL	WIDTH	HEIGHT	THICKNESS		TYPE	MATERIAL	RATING	HEAD	JAMB	SILL	HDW SET				
G101A	N	FRP	3' - 0"	7' - 0"	0' - 1 3/4"	-	F5	ALUM	-	1/A9501	2/A-9501	11/A-9506 SIM.	6	TYPE E	19		
G101B	OHC	ALUM	8' - 0"	12' - 0"	0' - 2"	-	OHC	GALV	-	12/A-9501	13/A-9501	14/A9501				NOTE 1.	
G101C	OHC	ALUM	8' - 0"	12' - 0"	0' - 2"	-	OHC	GALV	-	12/A-9501	13/A-9501	14/A9501				NOTE 1.	
G101D	OHC	ALUM	8' - 0"	12' - 0"	0' - 2"	-	OHC	GALV	-	12/A-9501	13/A-9501	14/A9501				NOTE 1.	
G101E	OHC	ALUM	8' - 0"	12' - 0"	0' - 2"	-	OHC	GALV	-	12/A-9501	13/A-9501	14/A9501				NOTE 1.	
G101F	N	FRP	3' - 0"	7' - 0"	0' - 1 3/4"	-	F5	ALUM	-	1/A9501	2/A-9501	11/A-9506 SIM.	6	TYPE E	20		
G201A	N	FRP	3' - 0"	7' - 2"	0' - 1 3/4"	-	F2	ALUM	-	1/A9501	2/A-9501	11/A-9506 SIM.	6	TYPE E	17		
G201B	OHC	ALUM	16' - 0"	8' - 0"		-	OHC	GALV	-	12/A-9501	13/A-9501	14/A9501				NOTE 1.	
G201C	OHC	ALUM	16' - 0"	8' - 0"		-	OHC	GALV	-	12/A-9501	13/A-9501	14/A9501				NOTE 1.	
G201D	OHC	ALUM	16' - 0"	8' - 0"		-	OHC	GALV	-	12/A-9501	13/A-9501	14/A9501				NOTE 1.	
G201E	OHC	ALUM	16' - 0"	8' - 0"		-	OHC	GALV	-	12/A-9501	13/A-9501	14/A9501				NOTE 1.	
G201F	N	FRP	3' - 0"	7' - 2"	0' - 1 3/4"	-	F2	ALUM	-	1/A9501	2/A-9501	11/A-9506 SIM.	6	TYPE E	18		

NOTE 1. INSULATED, CHAIN OPERATED MANUAL OVERHEAD COIL DOOR - KYNAR 500 SKY BLUE



**TETRA TECH**  
www.tetra-tech.com  
101 QUALITY CIRCLE, SUITE 140  
HUNTSVILLE, ALABAMA 35896  
PHONE: (256) 424-4077 FAX: (256) 424-4087

BID SET  
Professional Seal: J. QUINCY BRACK JR., ARCHITECT, No. 6512, State of Alabama, expires 10/21/14

MARK	DATE	DESCRIPTION	BY

HUNTSVILLE UTILITIES  
SOUTHEAST WATER TREATMENT PLANT  
GAC/BAC FILTRATION  
ARCHITECTURAL  
SECTIONS

Project No.: 200-11740-10003  
Designed By: Q.BIAGI  
Drawn By: Q.BIAGI  
Checked By: D.GALANTE

**A-3301**

Bar Measures 1 Inch

10/1/2014 4:19:15 PM C:\Users\brent.fox\Documents\WTP-11740-S-GACBAC\_brent.fox.rvt