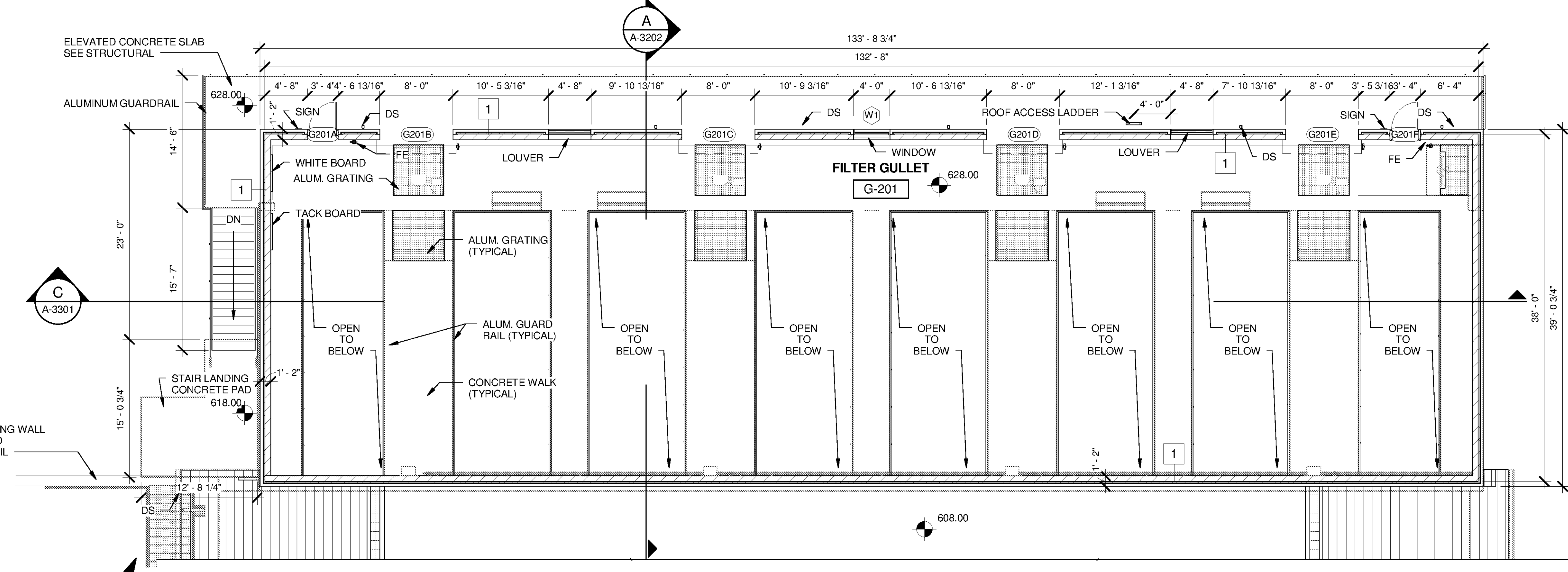
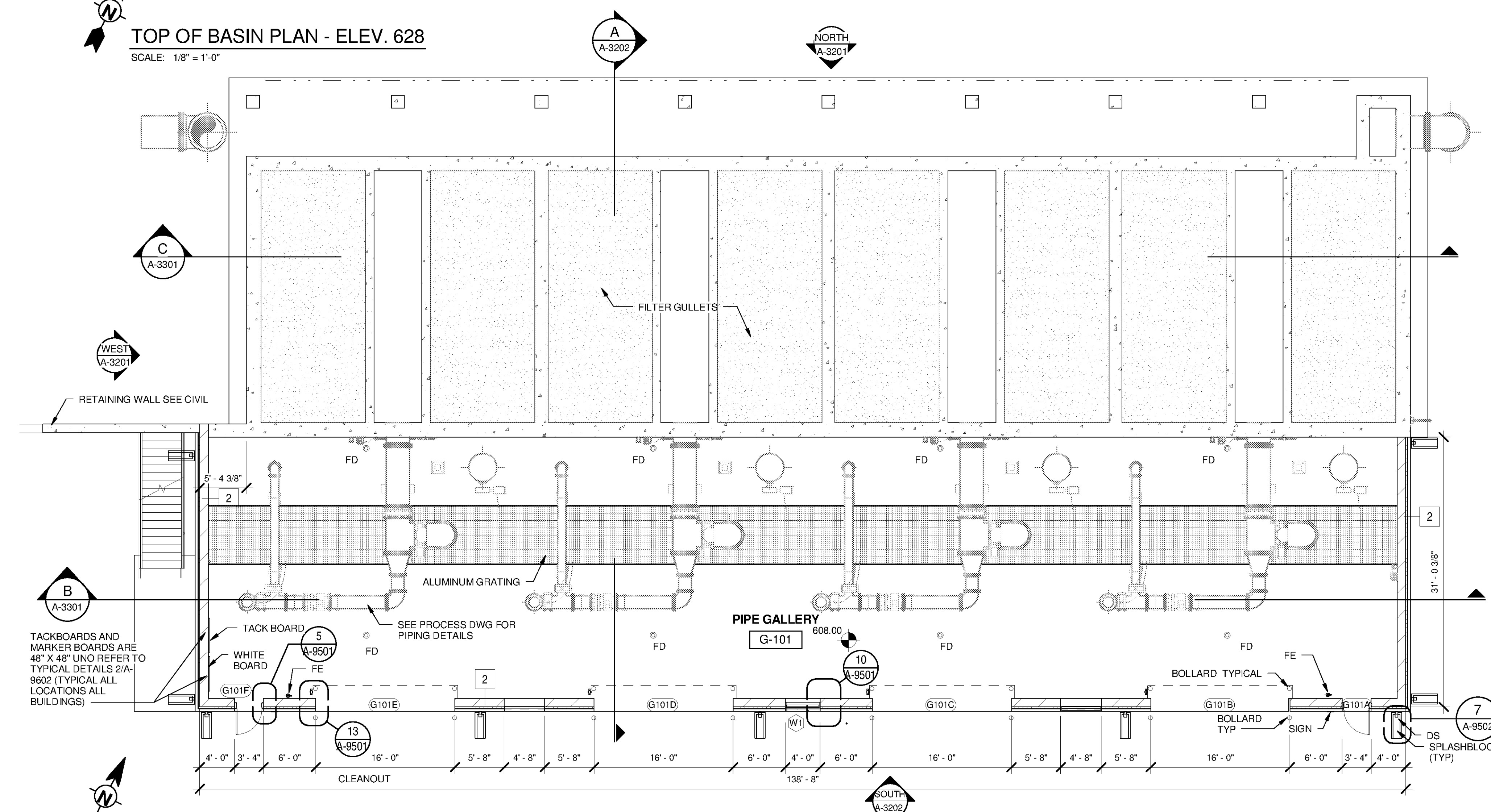


1 2 3 4 5 6 7

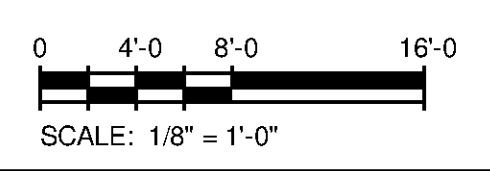
GENERAL NOTES - FLOOR PLANS	
1	REFER TO WALL TYPE DETAILS FOR WALL TYPES INDICATED SHEET A-9503
2	REFER TO ROOM SCHEDULE FOR FLOOR FINISH AND WALL FINISH ON SHEET A-3301.
3	REFER TO REFLECTED CEILING PLANS FOR CEILING TYPES AND CEILING HEIGHTS ON SHEET A-3103.
4	REFER TO FRAME TYPES FOR WINDOW & DOOR FRAME TYPES SHOWN. SEE SHEET A-9601
5	REFER TO MECHANICAL, ELECTRICAL, STRUCTURAL AND PROCESS EQUIPMENT FOR DETAILS. EQUIPMENT SHOWN FOR REFERENCE ONLY
6	TYPICAL FIRST FLOOR ELEVATION TO BE 0'-0" UNO DATUM ELEVATION COORDINATE WITH ACTUAL ELEVATIONS. REFER TO CIVIL DRAWINGS.
7	SEE SHEET A-9501, A-9502, A-9503, A-9504 & A-9505 FOR TYPICAL DETAILS
8	[1] REFER TO CORRESPONDING DETAIL NUMBER ON SHEET A-9503 FOR WALL TYPES



TOP OF BASIN PLAN - ELEV. 628
SCALE: 1/8" = 1'-0"



FLOOR PLAN - ELEV. 608
SCALE: 1/8" = 1'-0"



TETRA TECH
www.tetra-tech.com
101 QUALITY CIRCLE, SUITE 140
HUNTSVILLE, ALABAMA 35806
PHONE: (256) 424-4077 FAX: (256) 424-4087

BID SET
STATE OF ALABAMA
J. QUINCY BRADLEY, JR.
ARCHITECT
6512
10/21/14

MARK	DATE	DESCRIPTION	BY

HUNTSVILLE UTILITIES
SOUTHEAST WATER TREATMENT PLANT
**GAC/BAC FILTRATION
BUILDING FLOOR PLAN**

Project No.: 200-11740-10003
Designed By: Q.BIAGI
Drawn By: Q.BIAGI
Checked By: D.GALANTE

A-3102

10/1/2014 4:18:26 PM C:\Users\brnt\Documents\WTP-11740-S-GACBAC_brent\fox.rvt

Copyright Tetra Tech