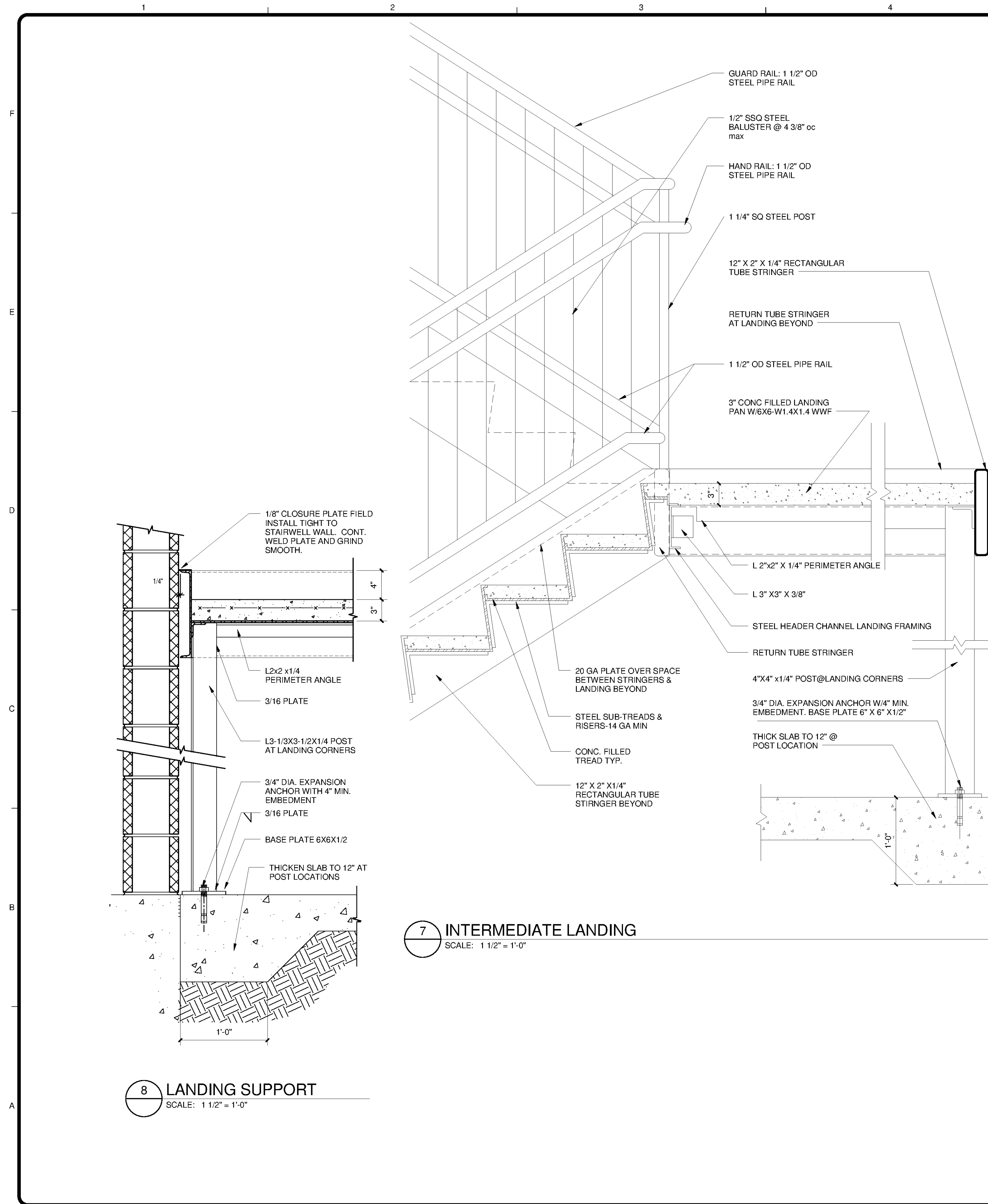
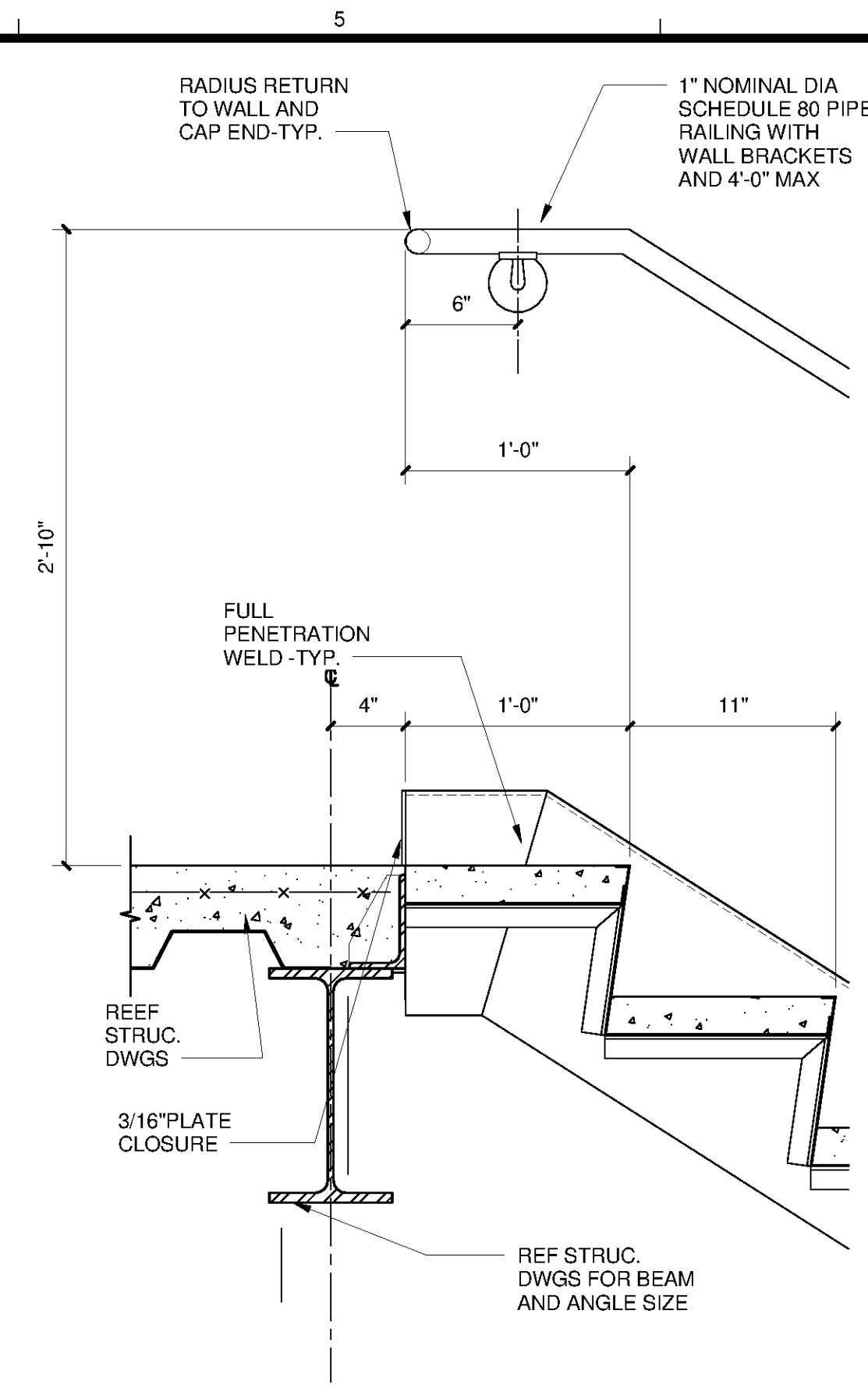


10/3/2014 3:07:35 PM C:\Users\Quintin.Blagi\Documents\WTP-11740-A-MAINPR_Quintin.Blagi.rvt

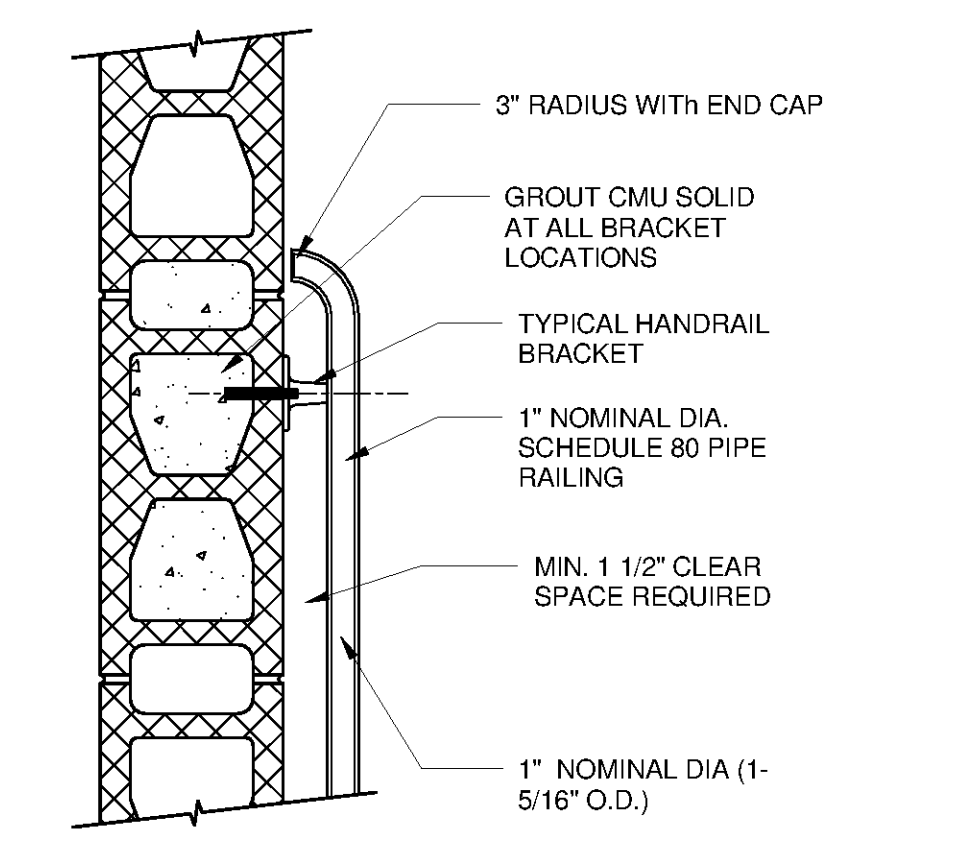


8 LANDING SUPPORT
SCALE: 1 1/2" = 1'-0"

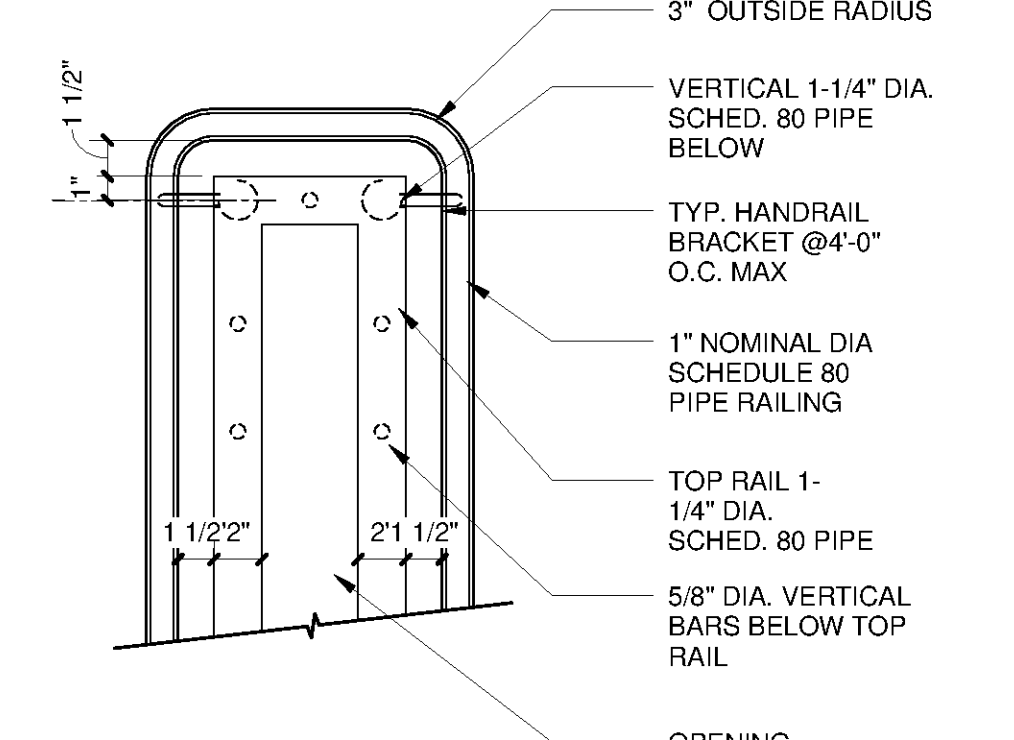
7 INTERMEDIATE LANDING
SCALE: 1 1/2" = 1'-0"



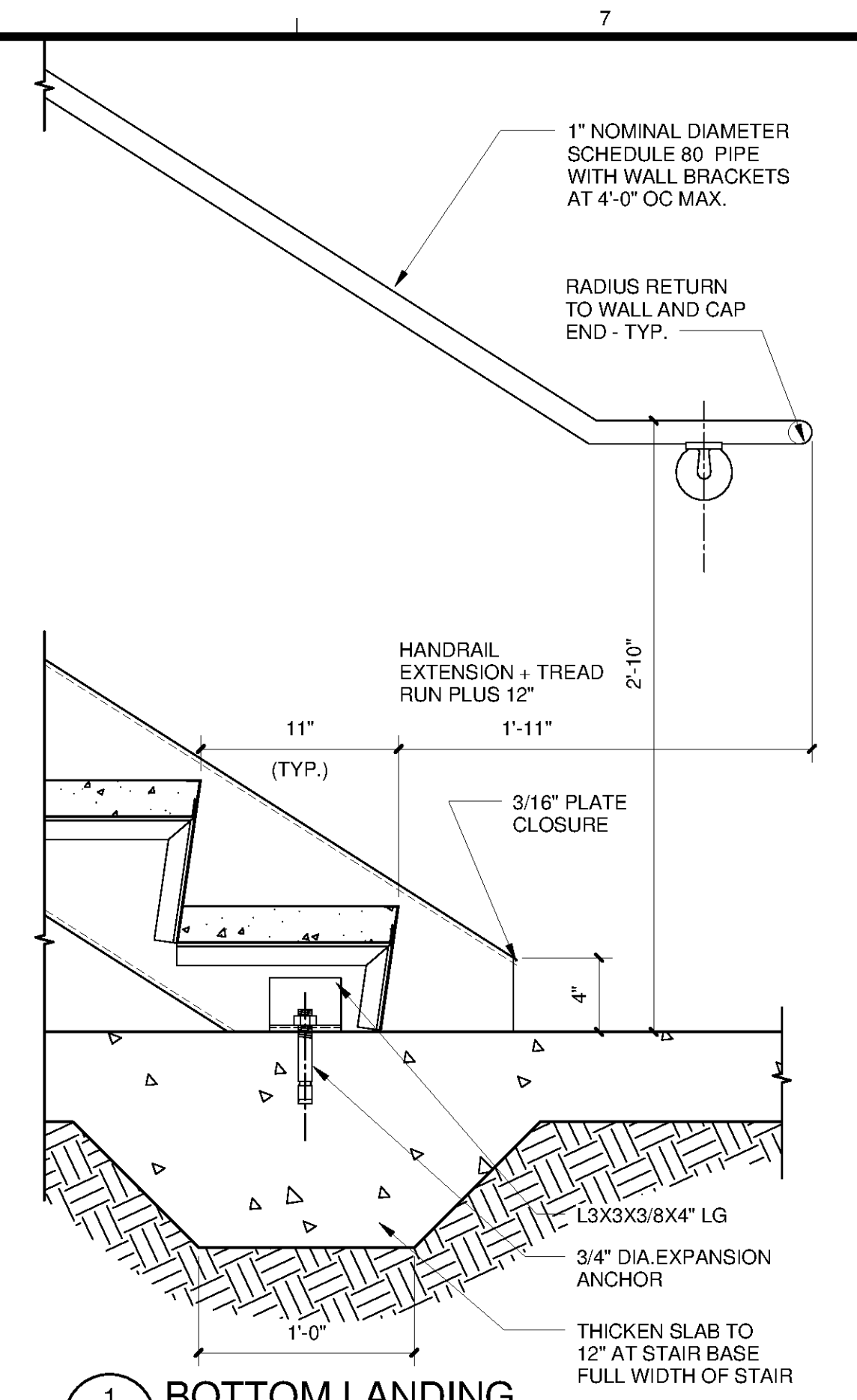
2 LANDING SECTION
A-2401 SCALE: 1 1/2" = 1'-0"



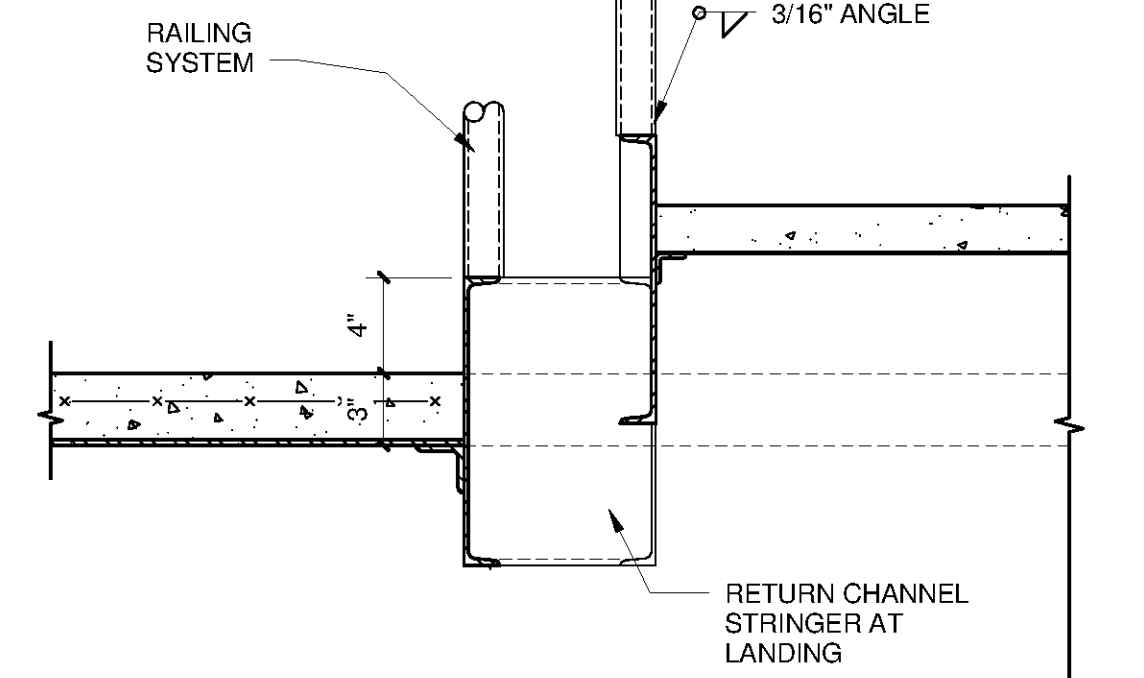
4 TYPICAL RAILING TERMINATION
SCALE: 1 1/2" = 1'-0"



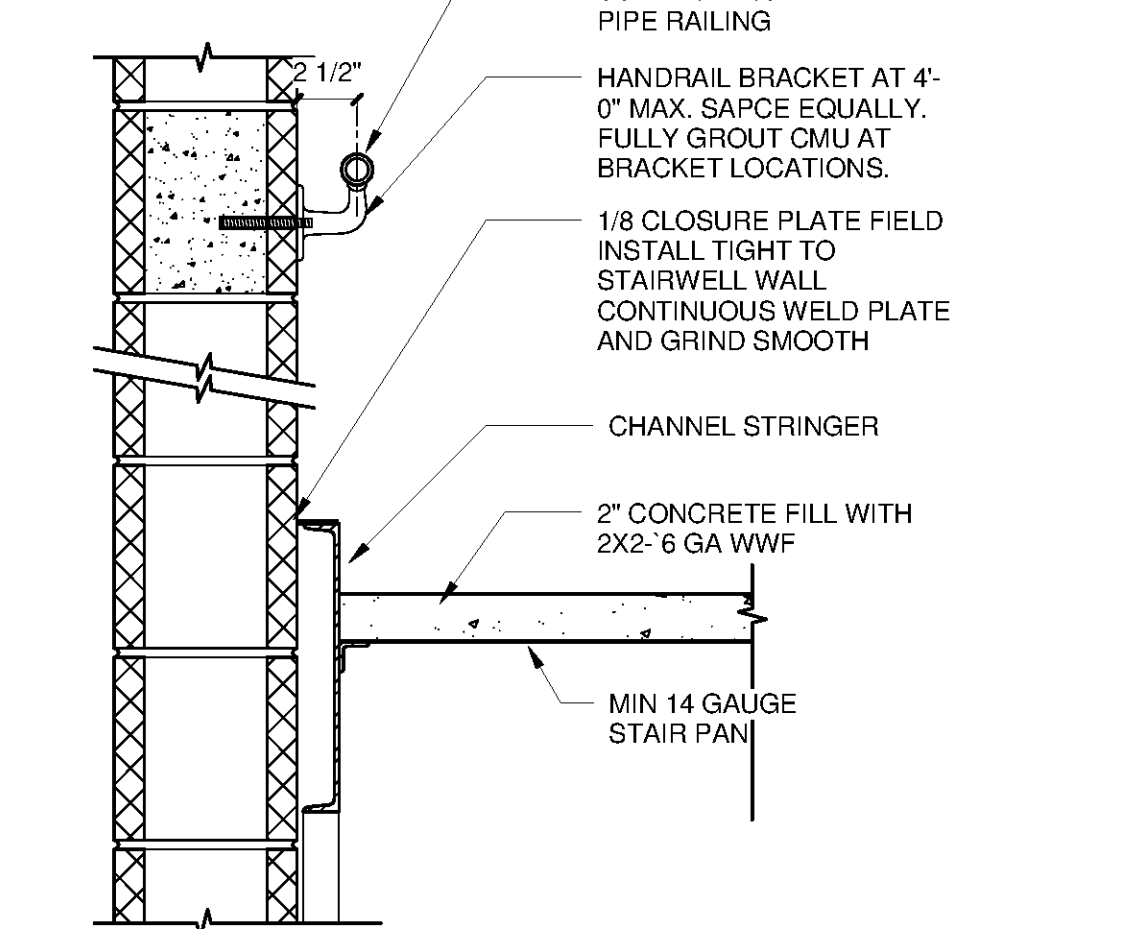
6 RAILING RETURN
A-2401 SCALE: 1 1/2" = 1'-0"



1 BOTTOM LANDING
A-2401 SCALE: 1 1/2" = 1'-0"



3 CENTER SECTION
A-2401 SCALE: 1 1/2" = 1'-0"



5 STRINGER
A-2401 SCALE: 1 1/2" = 1'-0"

TETRA TECH
www.tetra-tech.com
101 QUALITY CIRCLE, SUITE 140
HUNTSVILLE, ALABAMA 35896
PHONE: (256) 424-4077 FAX: (256) 424-4087

BID SET
SEAL OF THE CITY OF HUNTSVILLE
J. QUINCY BRACK JR.
APR 11 2014
6512
10/21/14

MARK	DATE	DESCRIPTION	BY

HUNTSVILLE UTILITIES
SOUTHEAST WATER TREATMENT PLANT
DETAILS

Project No.: 200-11740-10003
Designed By: Designer
Drawn By: Author
Checked By: Checker

A-2502
Bar Measures 1 inch

Copyright: Tetra Tech