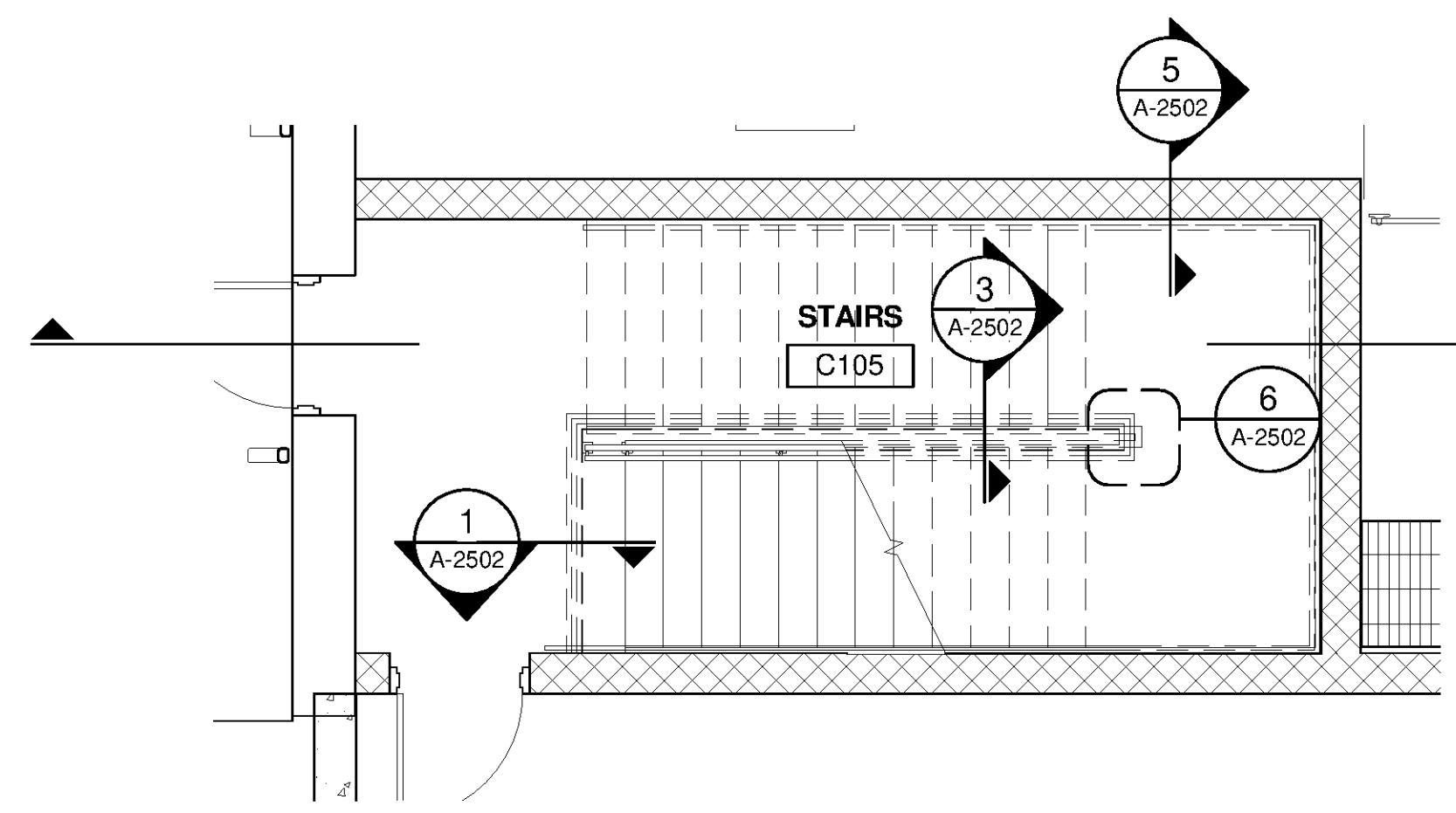
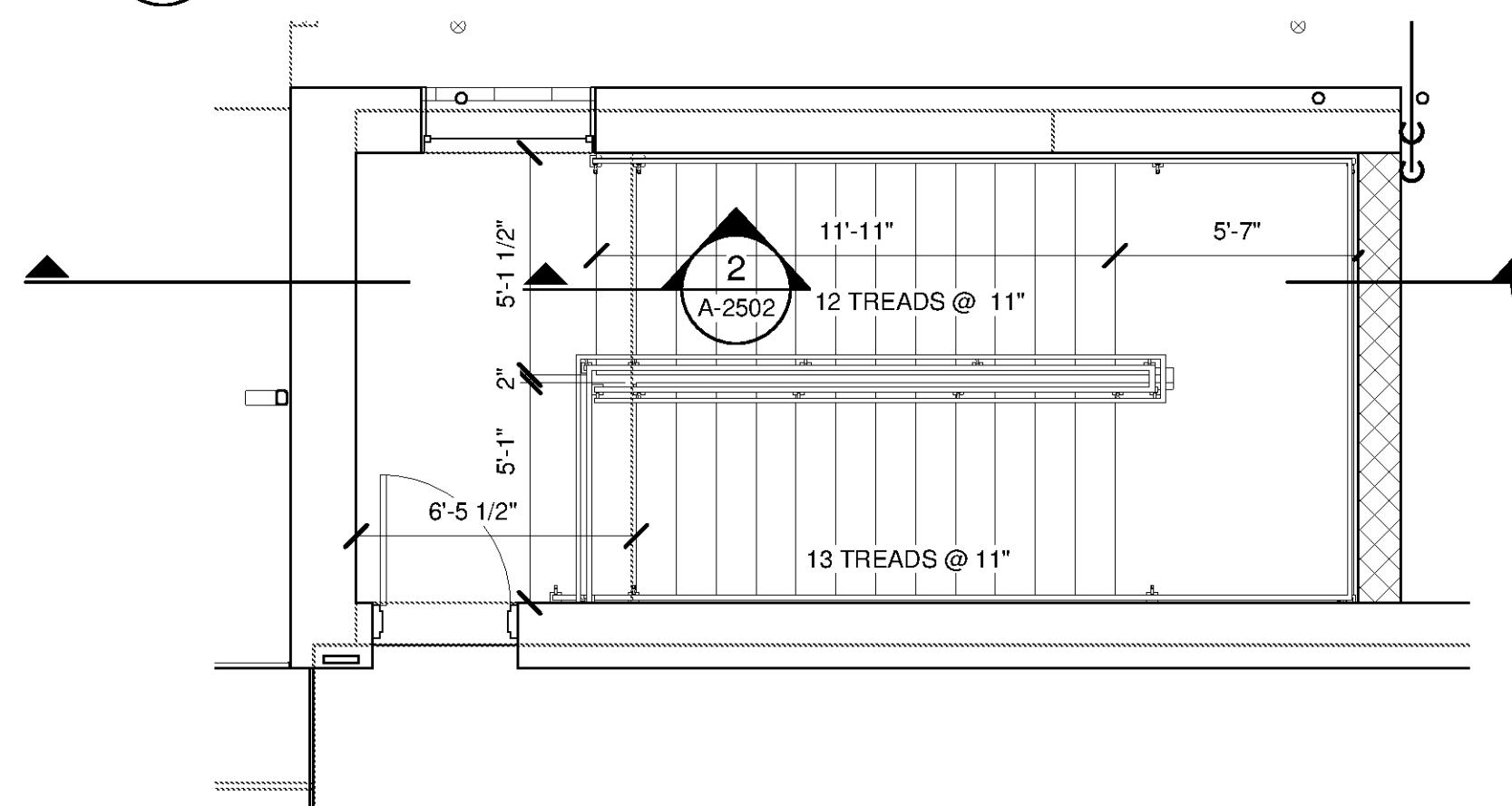


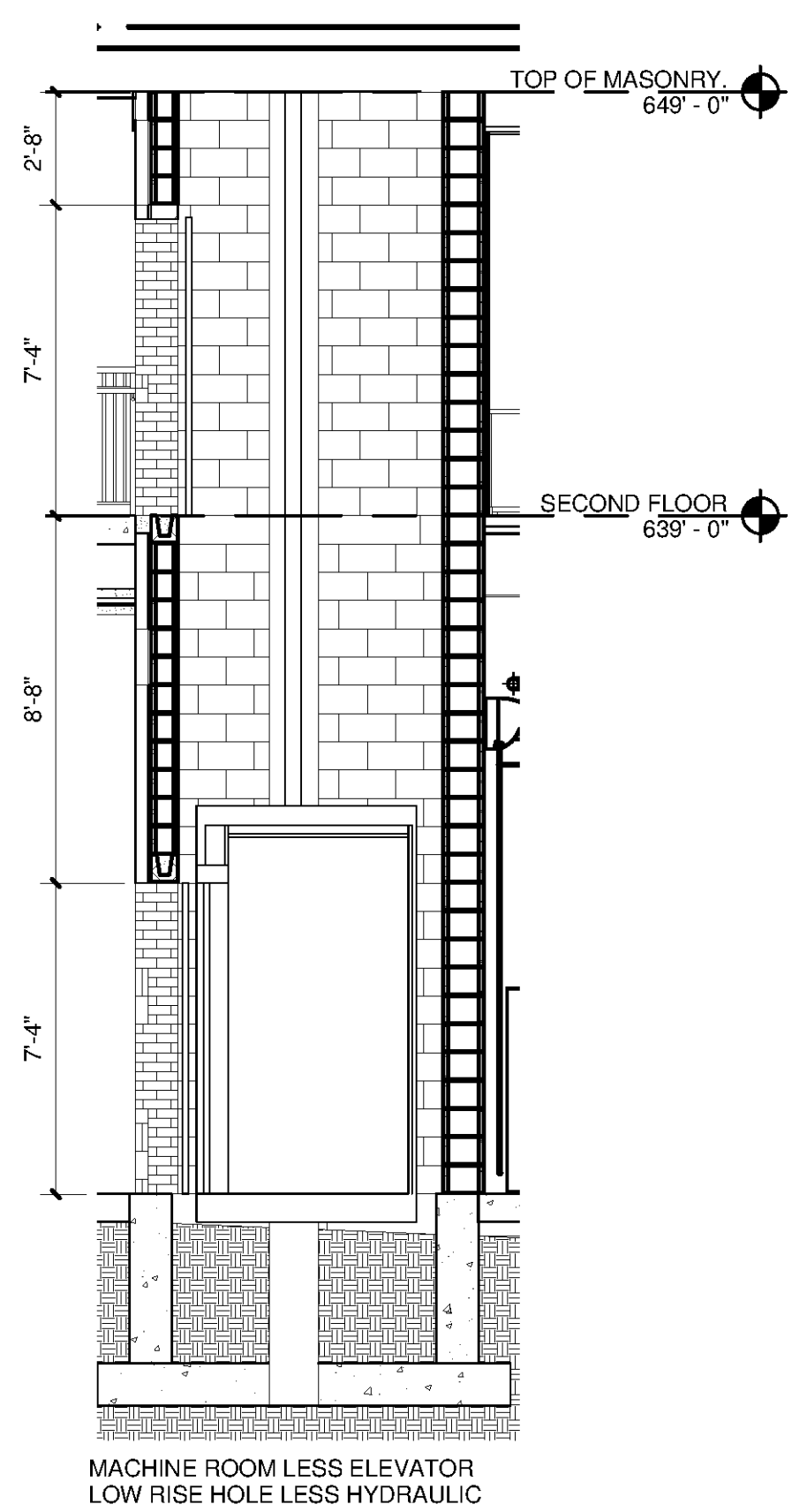
10/3/2014 3:05:51 PM C:\Users\Quintin.Blagi\Documents\WTP-11740-A-MAINPR_Quintin.Blagi.rvt



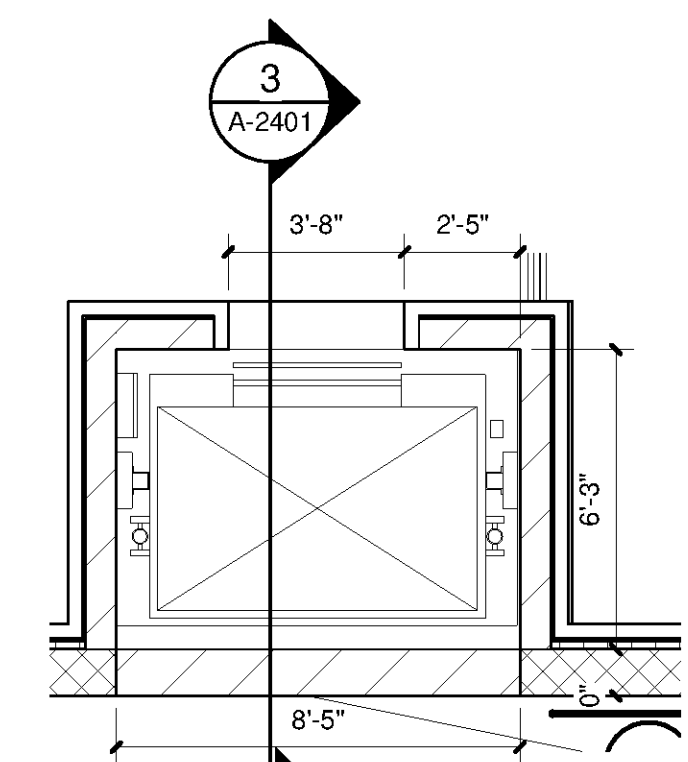
6 CHEM FEED 1ST FLOOR STAIR
A-2104 SCALE: 1/4" = 1'-0"



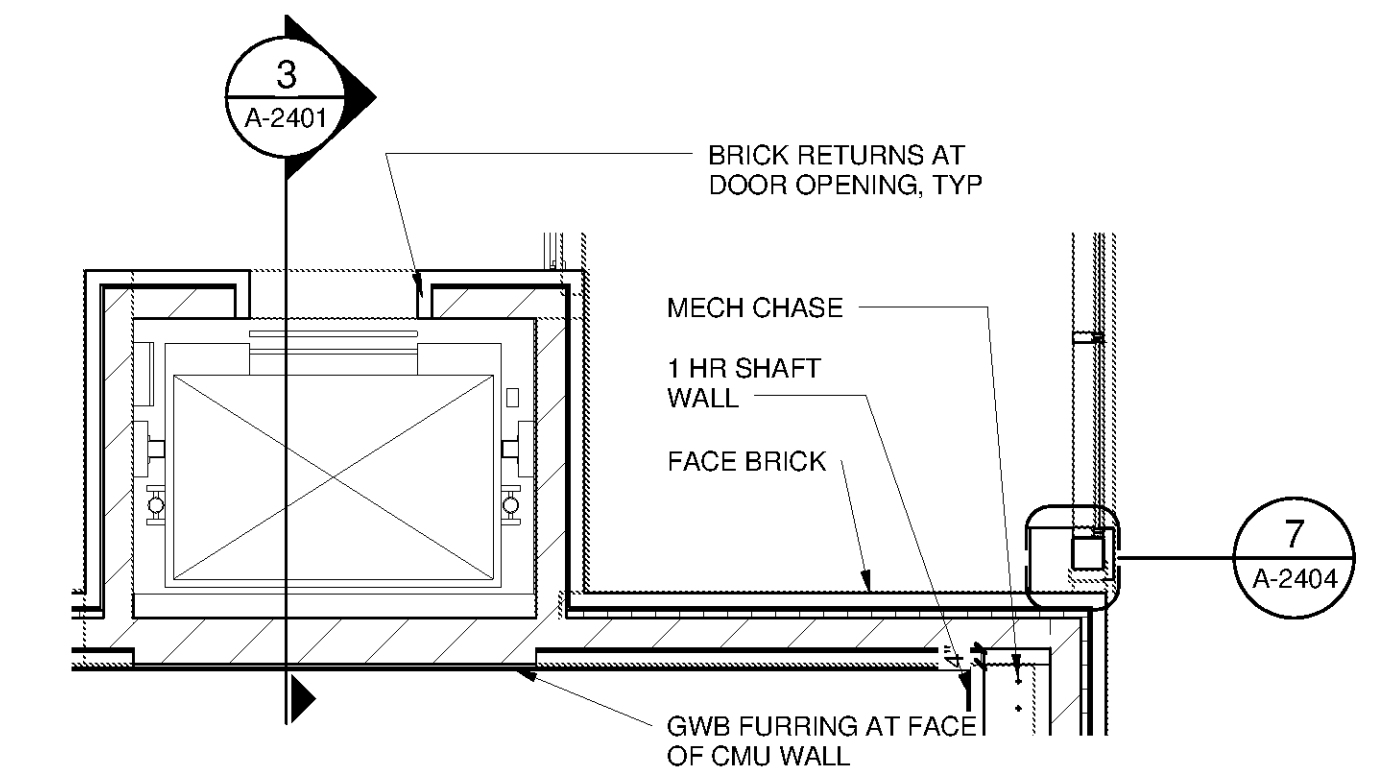
7 CHEM FEED 2ND FLOOR STAIR
A-2103 SCALE: 1/4" = 1'-0"



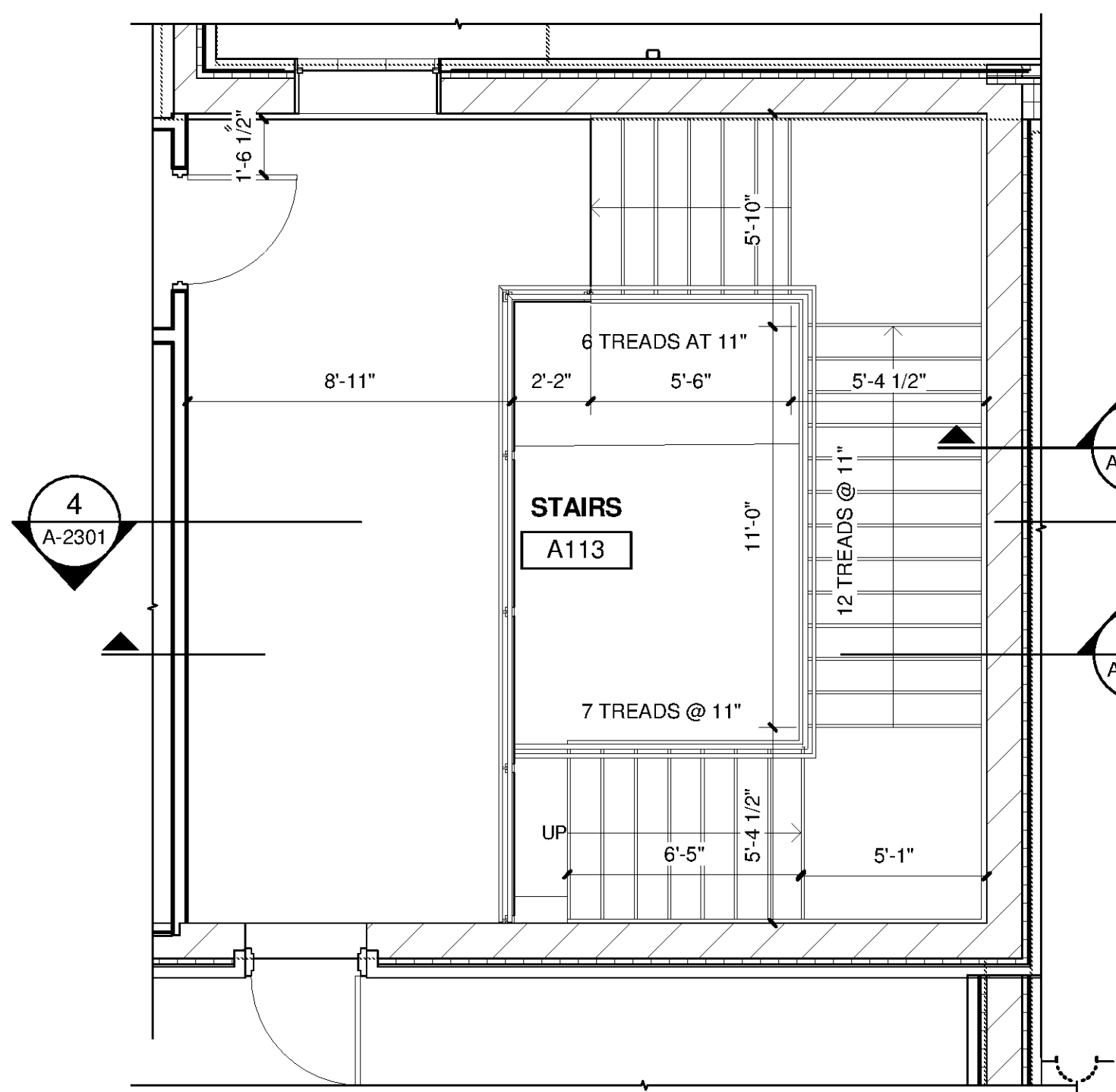
3 ELEVATOR SECTION
A-2401 SCALE: 1/4" = 1'-0"



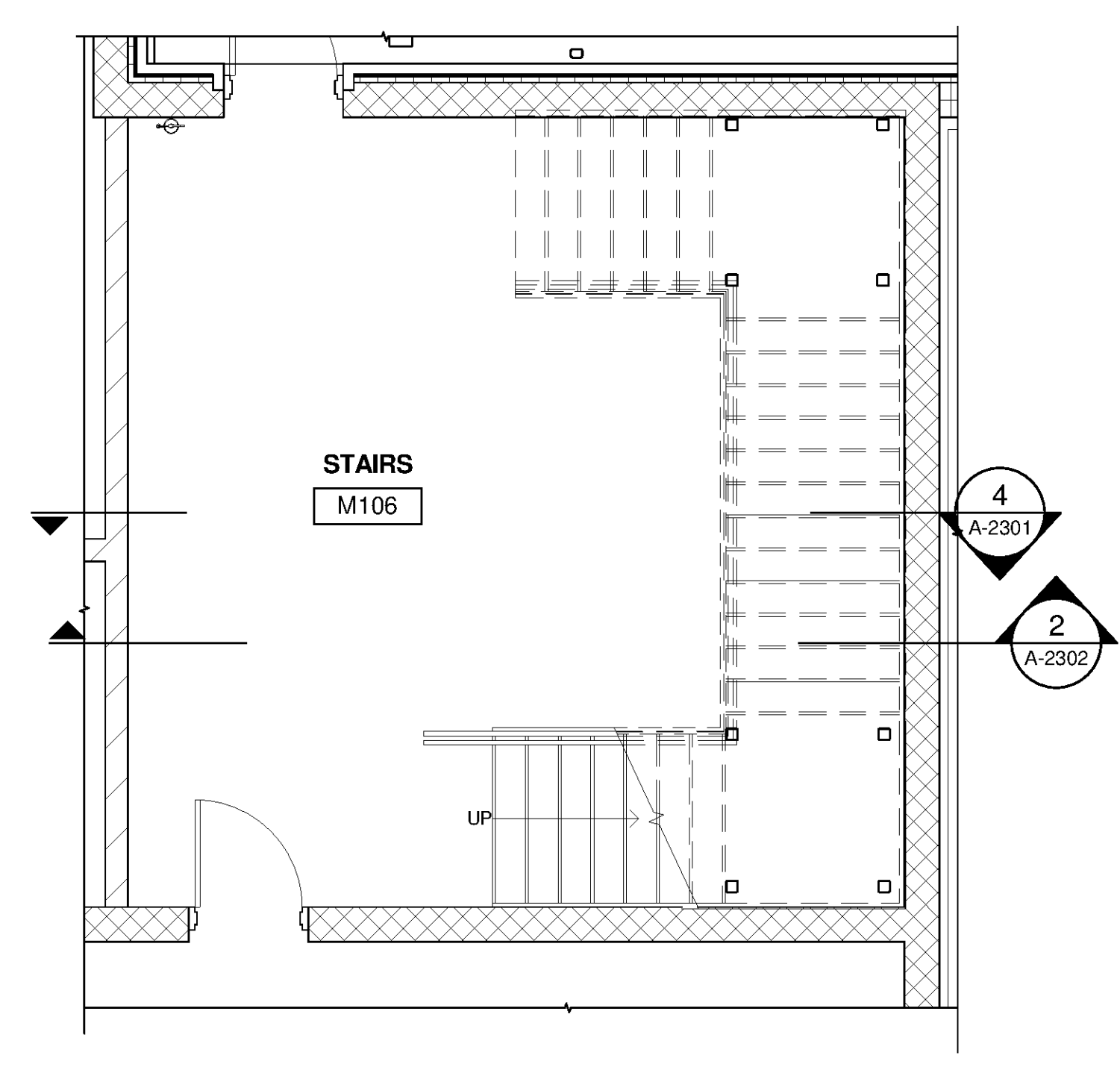
1 FIRST FLR ELEVATOR
A-2102 SCALE: 1/4" = 1'-0"



2 SECOND FLR ELEVATOR
A-2103 SCALE: 1/4" = 1'-0"



5 OPS SECOND FLOOR STAIR 2 PLAN
A-2103 SCALE: 1/4" = 1'-0"



4 OPERATIONS FIRST FLOOR STAIR 2
A-2102 SCALE: 1/4" = 1'-0"

GENERAL NOTES - ELEVATORS	
1	ALL ELEVATOR DOORS FRAMES TO BE KNOCK-DOWN TYPE CONSTRUCTION U.N.O.
2	ALL ELEVATOR DOORS AND FRAMES TO BE 90 MINUTE FIRE-RATED.
3	FASCIA PER ASME AND ALABAMA ELEVATOR CODE.
4	REFER TO MANUFACTURER FOR ALL DOOR FRAME ROUGH OPENING DIMENSIONS. COMPLETE MASONRY OPENING AFTER FRAMES ARE SET.
5	REFER TO ELEVATOR MANUFACTURER FOR LOCATION OF ALL DOORS AND FRAMES.
6	COORDINATE LOCATION OF SUMP WITH ELEVATOR MANUFACTURER.
7	COORDINATE LOCATION OF HOIST BEAM WITH ELEVATOR MANUFACTURER.
8	COORDINATE LOCATION OF PIT WITH ELEVATOR MANUFACTURER.
9	SILL SUPPORT AND RECESS TO BE GROUTED SOLID AFTER DOOR SILLS ARE INSTALLED.
10	COORDINATE ELEVATOR SILL HEIGHT WITH FLOOR FINISH. REFER TO THE ROOM FINISH SCHEDULE.
11	BASIS OF DESIGN ELEVATOR: THYSSENKRUPP ENDURA MRL 2500 80 fpm TWINPOST ABOVE GROUND ELEVATOR.
12	PROVIDE ALL COMPONENTS FOR THRESHOLDS AND OPENING FOR COMPLETE INSTALLATION.

TETRA TECH
www.tetra.tech.com
101 QUALITY CIRCLE, SUITE 140
HUNTSVILLE, ALABAMA 35896
PHONE: (256) 424-4077 FAX: (256) 424-4087

BID SET
STATE OF ALABAMA
J. QUINCY BRACK JR.
ARCHITECT
6512
10/21/14

MARK	DATE	DESCRIPTION	BY

HUNTSVILLE UTILITIES
SOUTHEAST WATER TREATMENT PLANT
ENLARGED VIEWS

Project No.: 200-11740-10003
Designed By: Q.BIAGI
Drawn By: S.SWEARER
Checked By: D.GALANTE

A-2401

Bar Measures 1 inch

Copyright: Tetra Tech