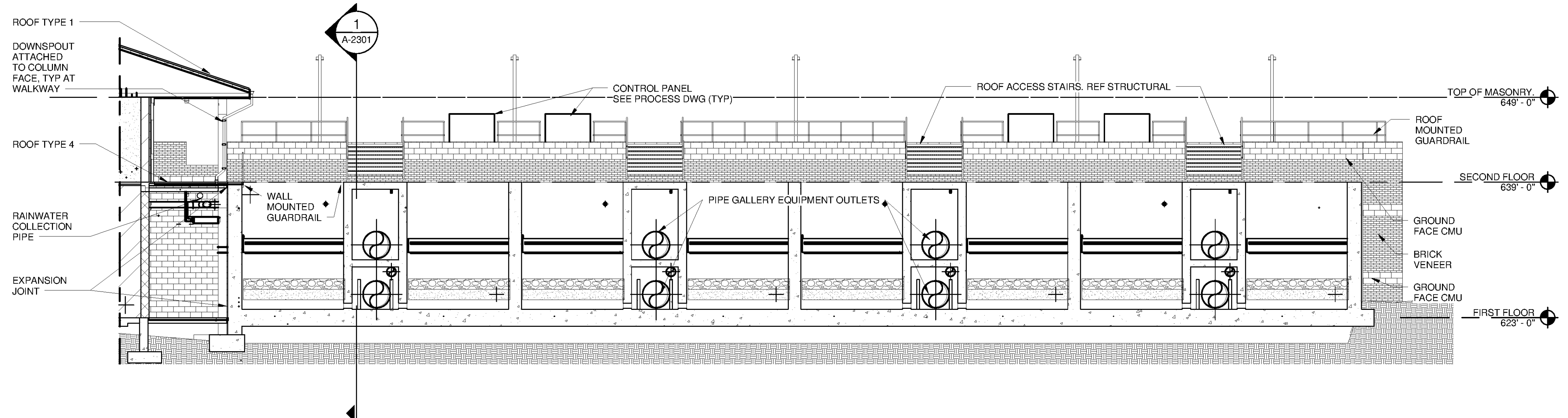
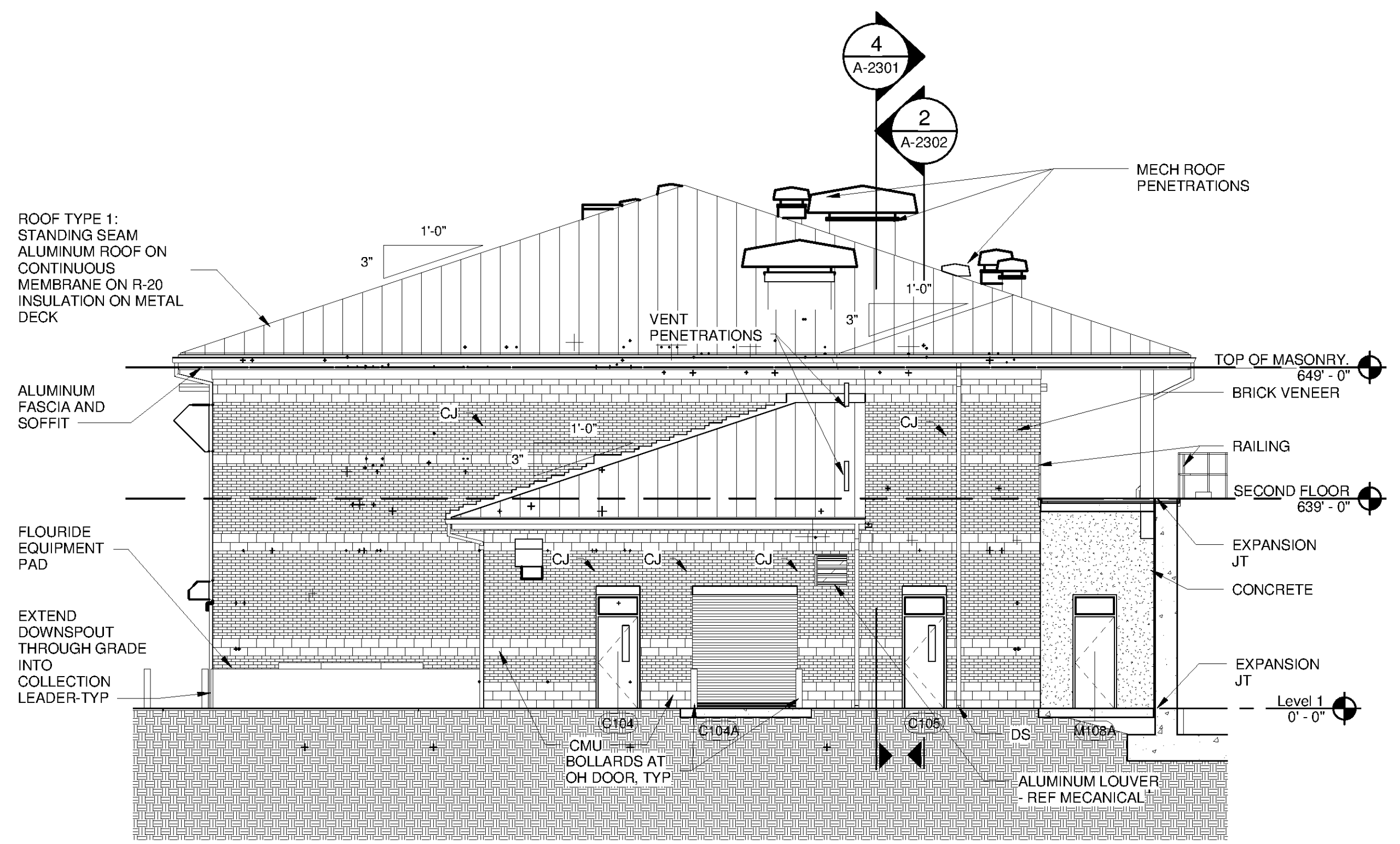


10/21/2014 8:33:56 AM C:\Users\Quintin.Biagi\Documents\WTP-11740-A-MAINPPL_Quintin.Biagi.rvt



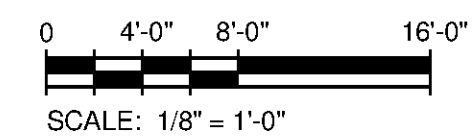
WEST ELEVATION/SECTION B
SCALE: 1/8" = 1'-0"



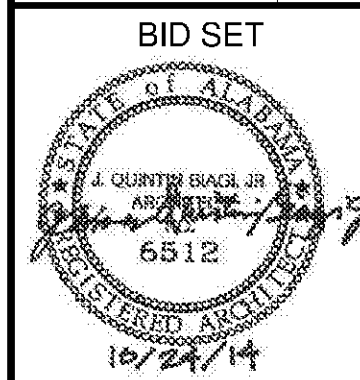
WEST ELEVATION A
SCALE: 1/8" = 1'-0"

GENERAL NOTES - MASONRY VENTS AND WEEPS

1	VERTICAL JOINT MASONRY VENTS LOCATED AT TOP OF WALL SHALL BE MODULAR INSERTS WITH INSECT RESISTANT VENT OPENINGS.
2	VENTS SHALL BE SPACE @ 24" O.C. IN FACE BRICK OR AT 16" O.C. IN GROUND FACE MASONRY.
3	WEEPS AT WALL BASE SHALL BE LOCATED ABOVE THROUGHWALL FLASHING AND BE TUBE AND WICK OR INSECT RESISTANT VENT AND WICK CONSTRUCTION
4	WEEPS SHALL BE SPACE @ 24" O.C. IN FACE BRICK OR AT 16" O.C. IN GROUND FACE MASONRY.



www.tetrattech.com
101 QUALITY CIRCLE, SUITE 140
HUNTSVILLE, ALABAMA 35896
PHONE: (256) 424-4077 FAX: (256) 424-4087



MARK	DATE	DESCRIPTION	BY

HUNTSVILLE UTILITIES
SOUTHEAST WATER TREATMENT PLANT
EXTERIOR ELEVATIONS

Project No.: 200-11740-10003
Designed By: Q.BIAGI
Drawn By: S.SWEARER
Checked By: D.GALANTE

A-2201

Bar Measures 1 inch

Copyright Tetra Tech