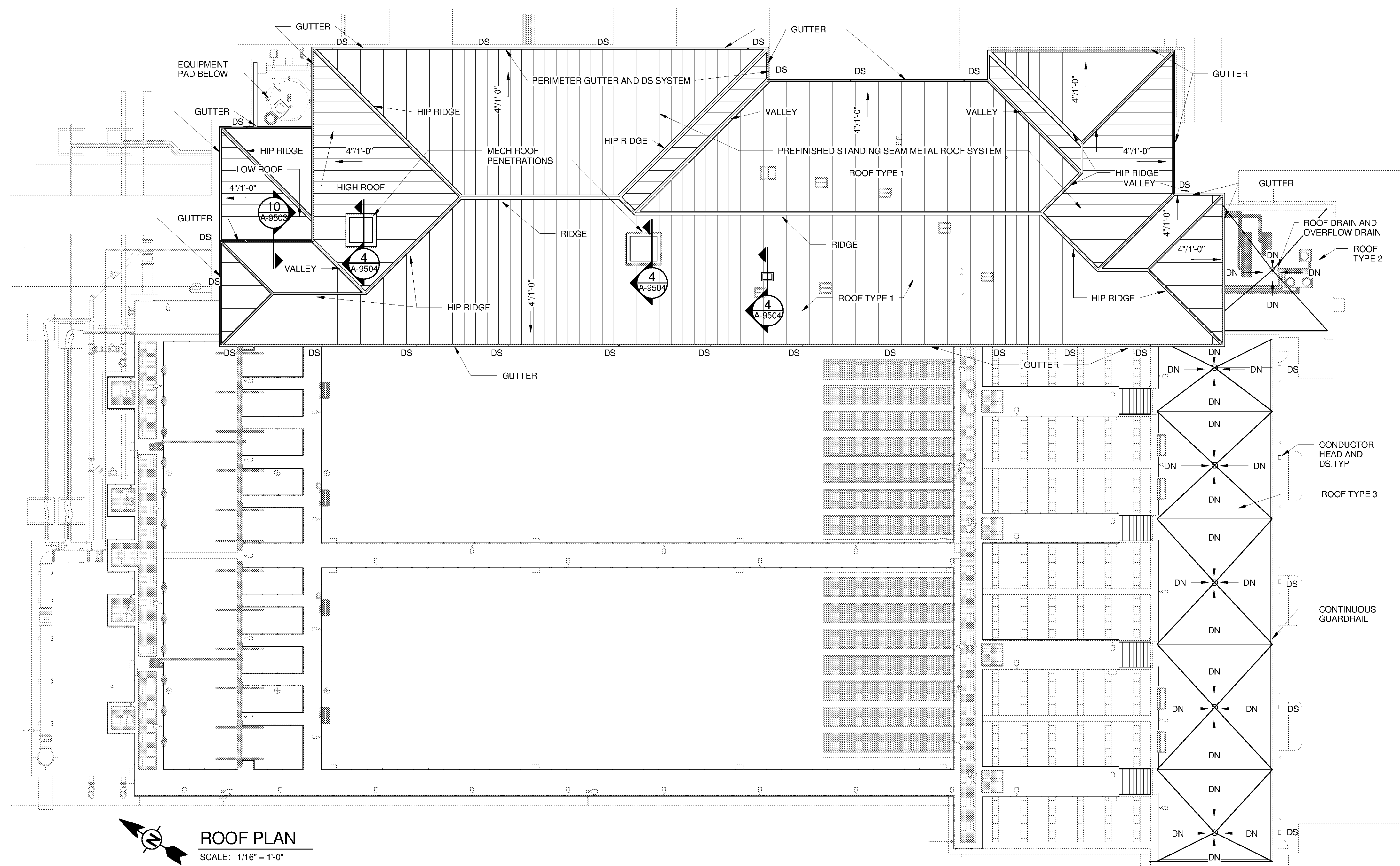
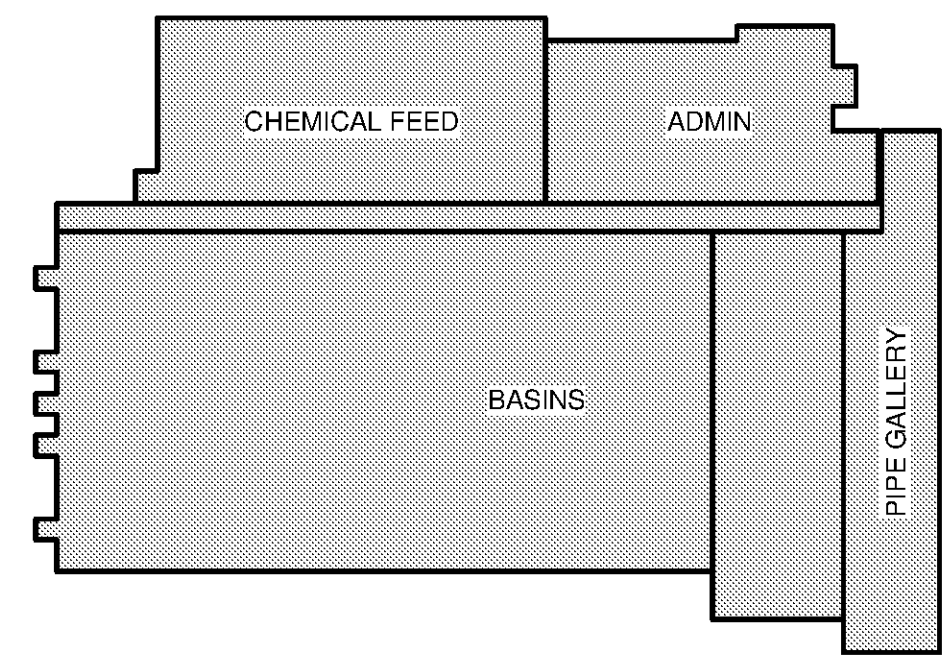


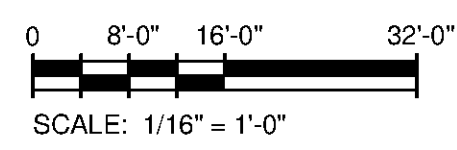
10/3/2014 3:02:09 PM C:\Users\Quintin.Blagi\Documents\WTP-11740-A-MAINPR_Quintin.Blagi.rvt



GENERAL NOTES - ROOFING	
1	ROOF TYPE 1 : BASIS OF DESIGN - FIRESTONE UNA-CLAD 6 STANDING SEAM, .040" (1.02 mm) PREFINISHED ALUMINUM ON SELF ADHERING UNDERLAYMENT MEMBRANE (CLAD-GUARD SA) ON FIRESTONE ISO 95+ GL INSULATION ON STEEL DECK OR APPROVED EQUAL. PROVIDE SEAM MOUNTED SNOW GUARD RAIL.
2	ROOF TYPE 2: BASIS OF DESIGN - FIRESTONE EPDM FULLY ADHERED MEMBRANE ON 1/2" ISOGUARD COVER BOARD ON 3" MIN (R-20) ISO 95+ INSULATION OR APPROVED EQUAL.
3	ROOF TYPE 3: BASIS OF DESIGN - AMERICAN HYDROTECH SPLIT SLAB CONCRETE TOPPING SLAB ON HYDRODRAIN ON TAPERED STYROFOAM RIGID INSULATION ON HYDROFLEX ON MONOLITHIC MEMBRANE 6125-FR ON SURFACE CONDITIONER ON STRUCTURAL CONCRETE SLAB OR APPROVED EQUAL.
4	ROOF TYPE 4: BASIS OF DESIGN - AMERICAN HYDROTECH SPLIT SLAB SLOPED CONCRETE TOPPING SLAB ON HYDRODRAIN ON STYROFOAM RIGID INSULATION ON HYDROFLEX ON MONOLITHIC MEMBRANE 6125-FR ON SURFACE CONDITIONER ON STRUCTURAL CONCRETE SLAB OR APPROVED EQUAL.
5	REPAIR AND REPLACE ROOFING SYSTEM OR STRUCTURE DAMAGED BY IMPROPER STORAGE, CONSTRUCTION ACTIVITIES, OR LACK OF ADEQUATE TEMPORARY PROTECTION. THIS ALSO INCLUDES INTERIOR DAMAGE TO FINISHES, EQUIPMENT, FURNISHINGS, ETC., RESULTING FROM LEAKS.
6	NEW BLOCKING SHALL BE FIRE RESISTANT TREATED WOOD.
7	VERIFY SIZE, LOCATION AND NUMBER OF ROOF PENETRATIONS INCLUDING VENTS, PIPES, CURBS, ROOF DRAINS, CONDUITS, ETC. PROVIDE NEW FLASHING AND SEAL PENETRATIONS WHETHER OR NOT INDICATED ON THE DRAWINGS.
8	COMPLETE WORK ABOVE ROOF, SUCH AS MASONRY, WELDING, MASONRY RESTORATION, ETC., PRIOR TO STARTING ROOFING WORK.
9	VERIFY AND MAINTAIN ROOF SLOPES AND DRAINAGE PATTERNS. TEST FOR AND CORRECT ANY PONDING CONDITIONS.
10	REFER TO MECHANICAL DRAWINGS TO COORDINATE ROOF CONDUCTOR LOCATIONS.
11	METAL GUTTERS SLOPE 1/16" PER FOOT
12	TAPERED RIGID INSULATION CRICKETS SLOPE 1/8" PER FOOT MINIMUM
13	PROVIDE SPLASH BLOCK AND 45 DEGREE TRANSITION AT ALL DOWNSPOUTS UNO.
14	PROVIDE ROOF SYSTEM (MEMBRANE, FLASHING COPINGS, CURBS, SSMR, ETC.) CAPABLE OF MEETING DESIGN REQUIREMENTS FOR PROJECT LOCATION (HUNTSVILLE, ALABAMA)
15	SEE ROOFING DETAILS SHEET A-9504.



KEY PLAN



TETRA TECH
www.tetrattech.com
101 QUALITY CIRCLE, SUITE 140
HUNTSVILLE, ALABAMA 35896
PHONE: (256) 424-4077 FAX: (256) 424-4087

BID SET
STATE OF ALABAMA
J. QUINCY BRADLEY
ARCHITECT
6512
10/21/14

MARK	DATE	DESCRIPTION	BY

HUNTSVILLE UTILITIES
SOUTHEAST WATER TREATMENT PLANT
ROOF PLAN
Project No.: 200-11740-10003
Designed By: Q.BIAGI
Drawn By: S.SWEARER
Checked By: D.GALANTE

A-2106