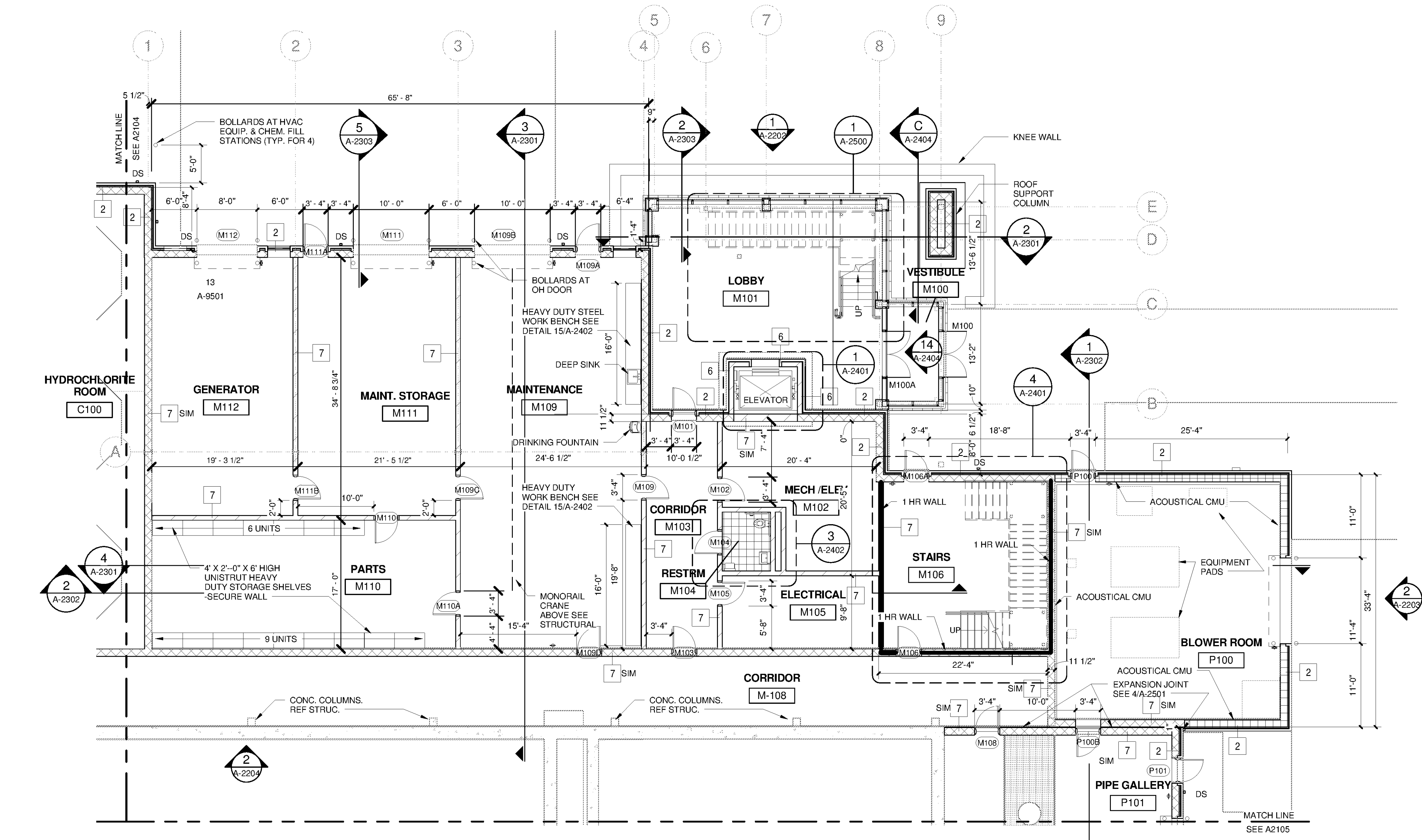
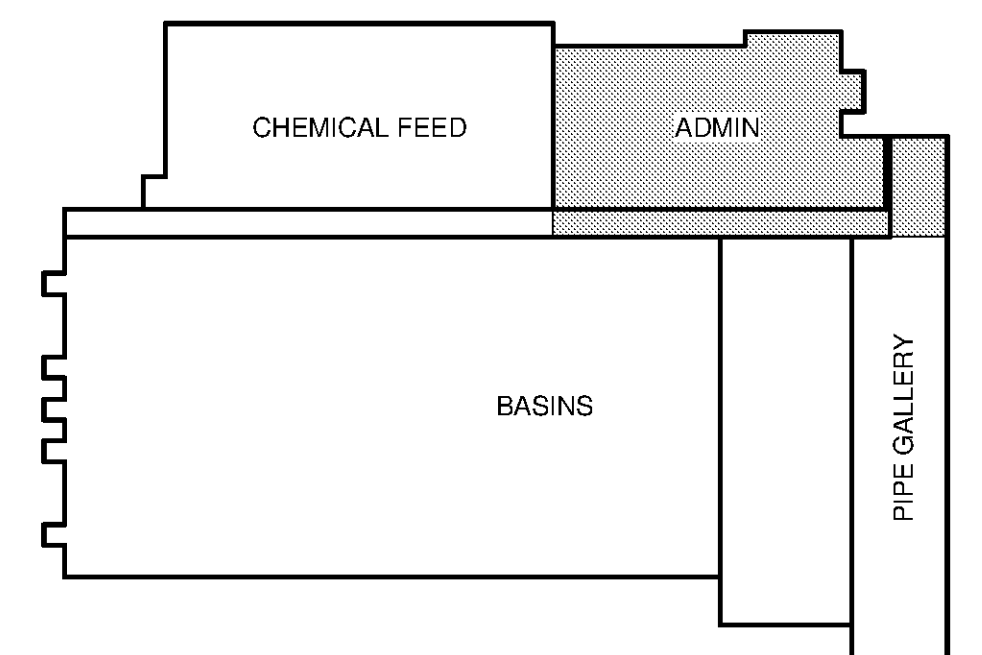


10/16/2014 2:59:16 PM C:\Users\Quintin.Biagi\Documents\WTP-11740-A-MAINPR_Quintin.Biagi.rvt

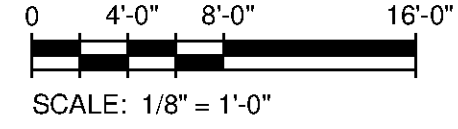


OPS FIRST FLOOR PLAN - ELEV. 623
SCALE: 1/8" = 1'-0"

GENERAL NOTES - FLOOR PLANS	
1	REFER TO A-0001, A-0002 FOR GENERAL NOTES
2	REFER TO ROOM SCHEDULE FOR FLOOR FINISH AND WALL FINISH A-2601.
3	REFER TO REFLECTED CEILING PLANS FOR CEILING TYPES AND CEILING HEIGHTS A-2107.
4	REFER TO FRAME TYPES FOR WINDOW & DOOR FRAME TYPES SHOWN. SEE SHEET A-9601
5	REFER TO MECHANICAL, ELECTRICAL, STRUCTURAL, AND PROCESS EQUIPMENT FOR DETAILS. EQUIPMENT SHOWN FOR REFERENCE ONLY.
6	TYPICAL FIRST FLOOR ELEVATION TO BE 0'-0" UNO DATUM ELEVATION COORDINATE WITH ACTUAL ELEVATIONS. REFER TO CIVIL DRAWINGS.
7	SEE A-9501 FOR WALL TYPES
8	SEE A-9000 SERIES OF DRAWINGS FOR TYPICAL DETAILS AND ADDITIONAL SCHEDULES.



KEY PLAN



TETRA TECH
www.tetra-tech.com
101 QUALITY CIRCLE, SUITE 140
HUNTSVILLE, ALABAMA 35896
PHONE: (256) 424-4077 FAX: (256) 424-4087

BID SET
STATE OF ALABAMA
J. QUINCY BRADLEY, JR.
ARCHITECT
6512
10/21/14

MARK	DATE	DESCRIPTION	BY

HUNTSVILLE UTILITIES
SOUTHEAST WATER TREATMENT PLANT
OPS FIRST FLOOR PLAN

Project No.: 200-11740-10003
Designed By: Q.BIAGI
Drawn By: S.SWEARER
Checked By: D.GALANTE

A-2102

Bar Measures 1 inch